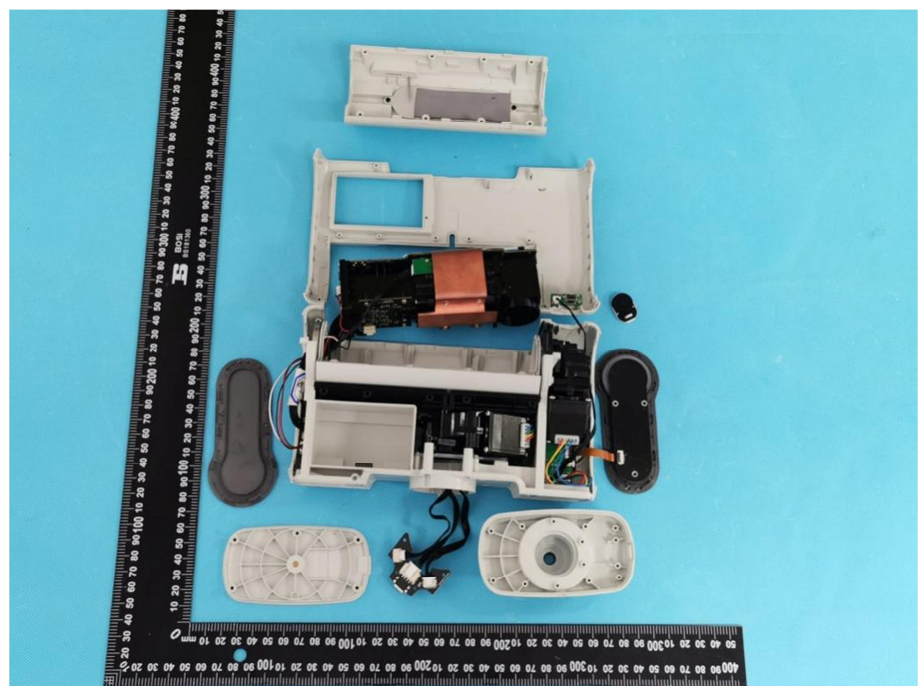


EXHIBIT 3 - EUT INTERNAL PHOTOGRAPHS

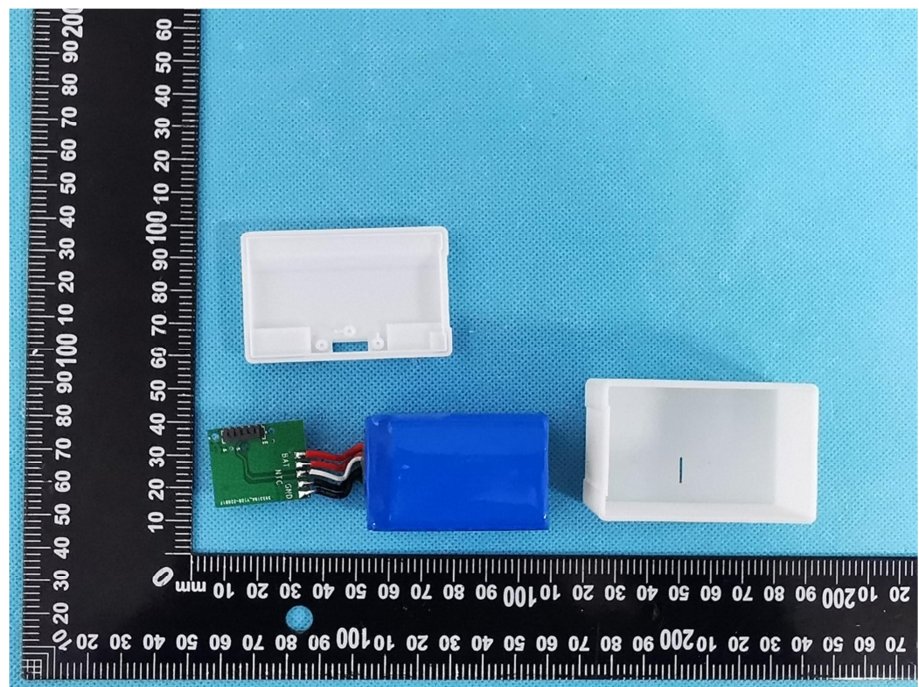
EUT Housing and Board View 1



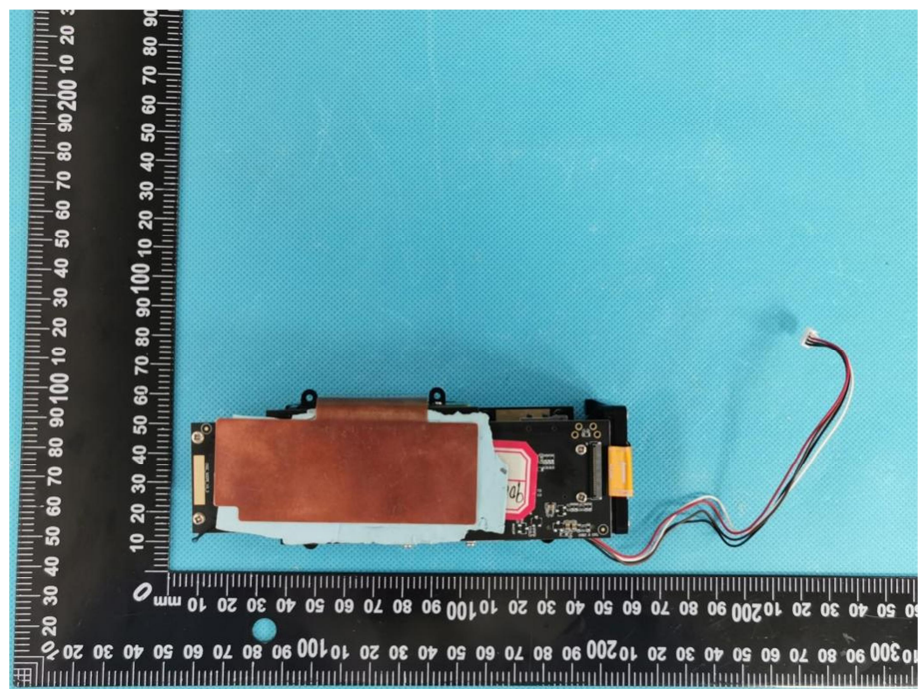
EUT Housing and Board View 2

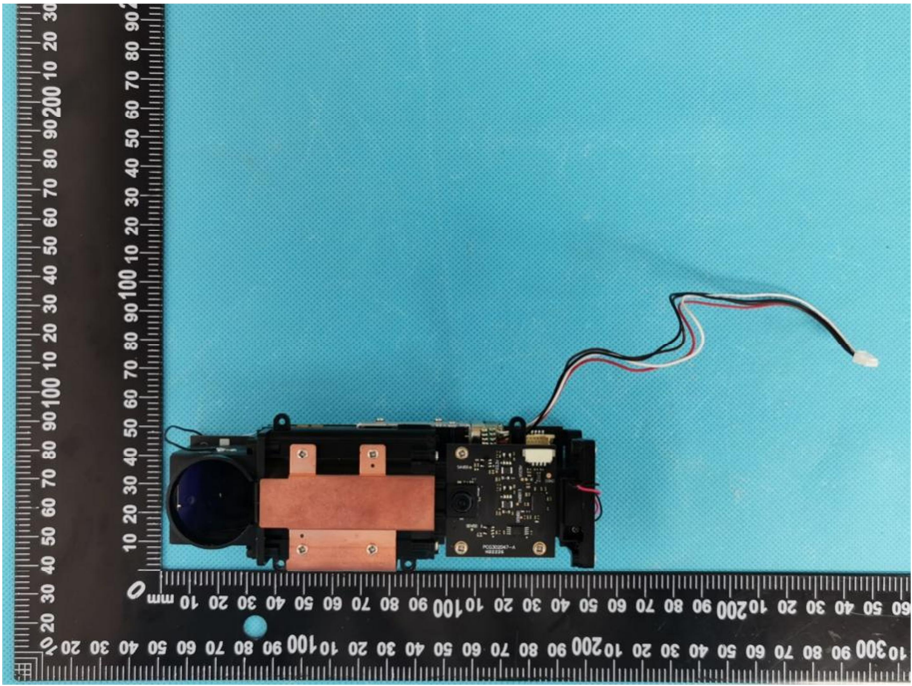
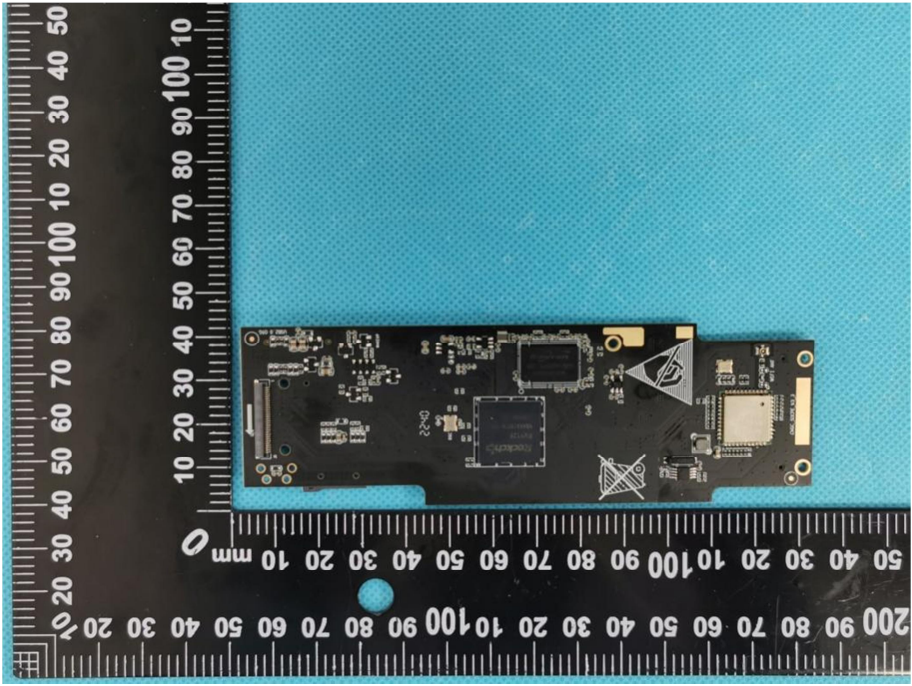


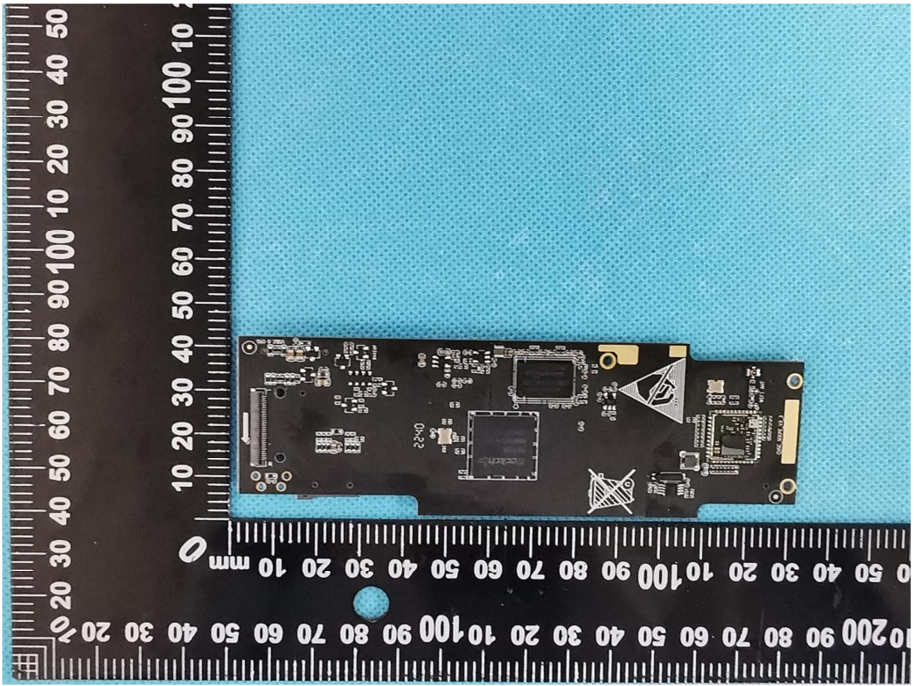
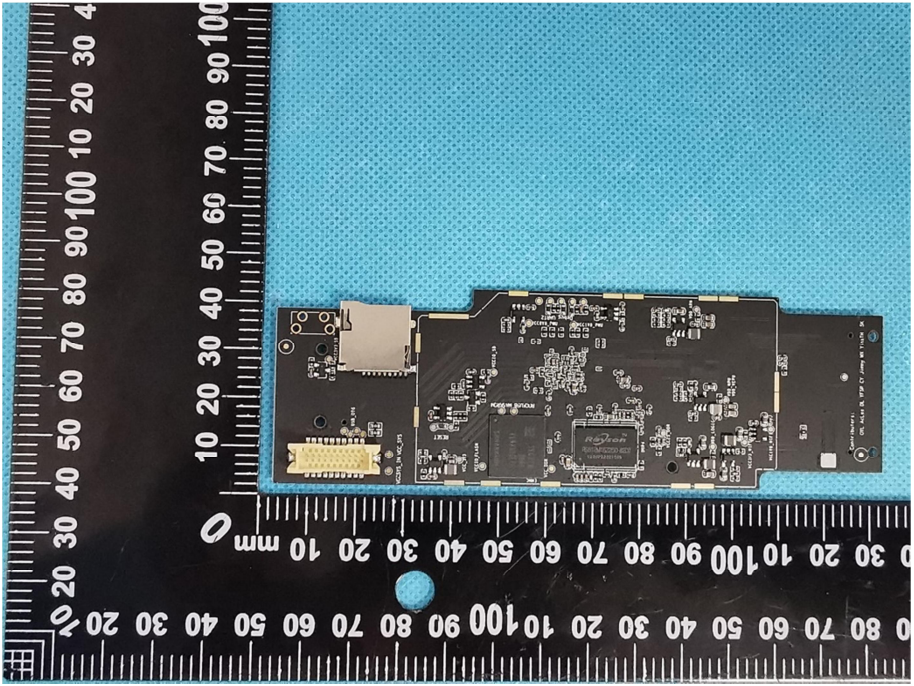
**EUT Housing and
Board View 3**



**Solder
Board-Component
View 1**



<p>Solder Board-Component View 2</p>	 <p>A photograph of a solder board component, likely a camera module, positioned on a blue textured surface. The component is oriented vertically. To its left is a black ruler with white markings, showing measurements in millimeters from 0 to 100. The component features a lens on the left side, a central copper-colored metal plate, and a black printed circuit board (PCB) on the right with various electronic components. Three thin wires (red, white, and black) extend from the top of the component.</p>
<p>Solder Board-Component View 3</p>	 <p>A photograph of the same solder board component, viewed from the opposite side. It is placed on a blue textured surface next to a black ruler with white markings, showing measurements in millimeters from 0 to 100. This view shows the back of the component, revealing the PCB with various electronic components, including a large square chip, a triangular component, and several smaller components. Two gold-plated connectors are visible on the right side of the board.</p>

<p>Solder Board-Component View 4</p>	 <p>A photograph of a black printed circuit board (PCB) component, labeled 'View 4'. The board is positioned horizontally against a blue background. A black ruler with white markings is placed vertically on the left side of the board, showing measurements in millimeters. The board features several integrated circuits, including a large square chip in the center and a smaller chip to its right. There are also various surface-mount components, solder joints, and a gold-plated connector on the right edge. A blue circular mark is visible on the ruler at approximately the 30 mm position.</p>
<p>Solder Board-Component View 5</p>	 <p>A photograph of the same black PCB component, labeled 'View 5'. The board is positioned horizontally against a blue background. A black ruler with white markings is placed vertically on the left side of the board, showing measurements in millimeters. The board features a large square chip in the center, a gold-plated connector on the left edge, and a gold-plated connector on the right edge. There are also various surface-mount components and solder joints. A blue circular mark is visible on the ruler at approximately the 30 mm position.</p>