
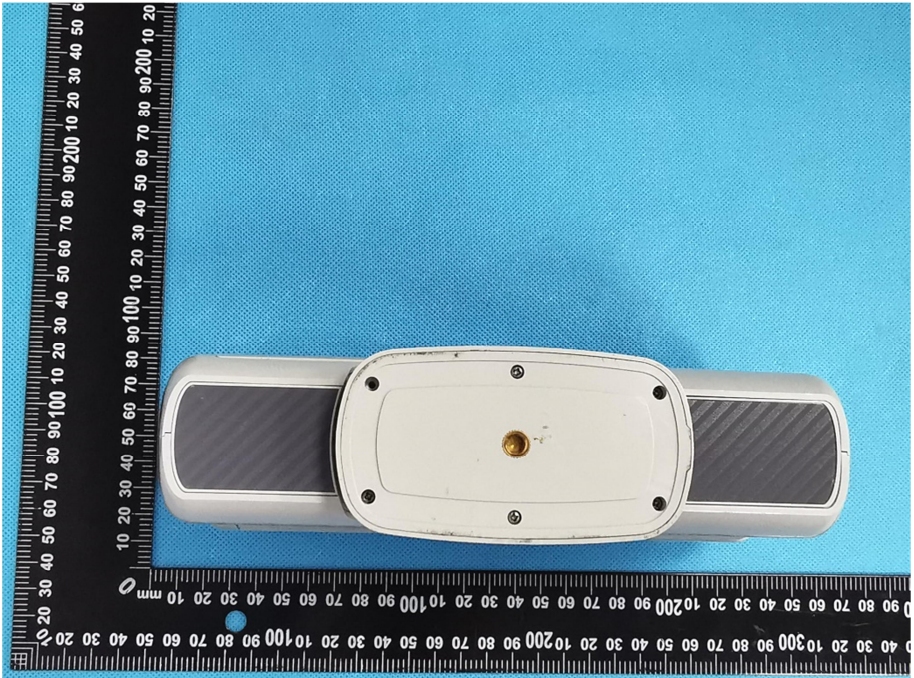


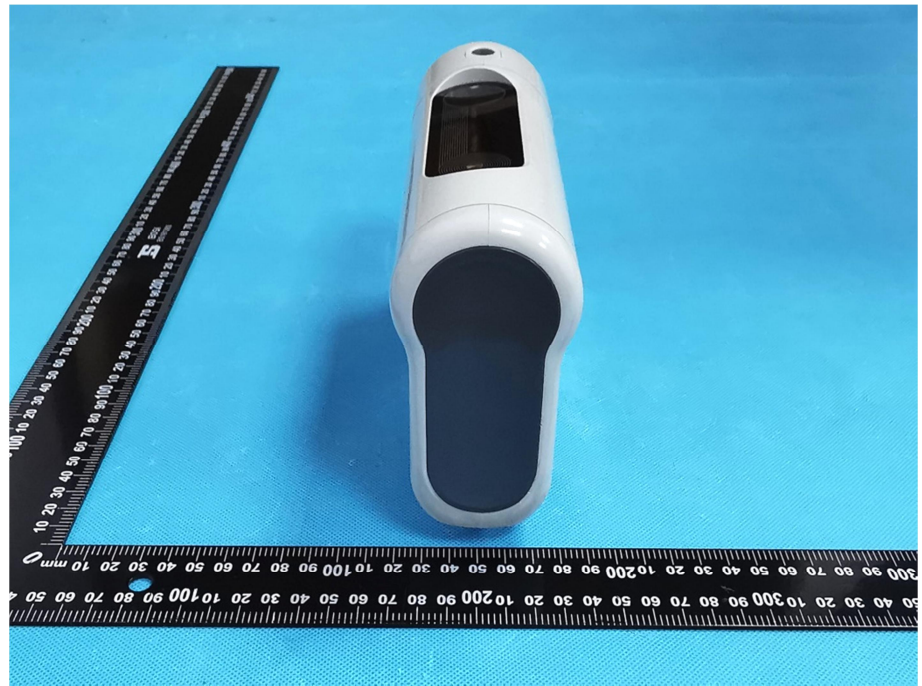
EXHIBIT 2 - EUT EXTERNAL PHOTOGRAPHS

<p>EUT View 1</p>	 <p>A photograph showing the front view of a white, cylindrical electronic device. The device has a lens on the left side and a microphone grille on the right. The microphone grille is labeled "Telephoto" and "Wide-Angle". The device is placed on a blue background next to a black ruler with white markings. The ruler shows measurements in millimeters and centimeters.</p>
<p>EUT View 2</p>	 <p>A photograph showing the back view of the white, cylindrical electronic device. The back panel is white and features a gold-colored connector in the center. There are four screws around the connector. The device is placed on a blue background next to a black ruler with white markings. The ruler shows measurements in millimeters and centimeters.</p>

EUT View 3



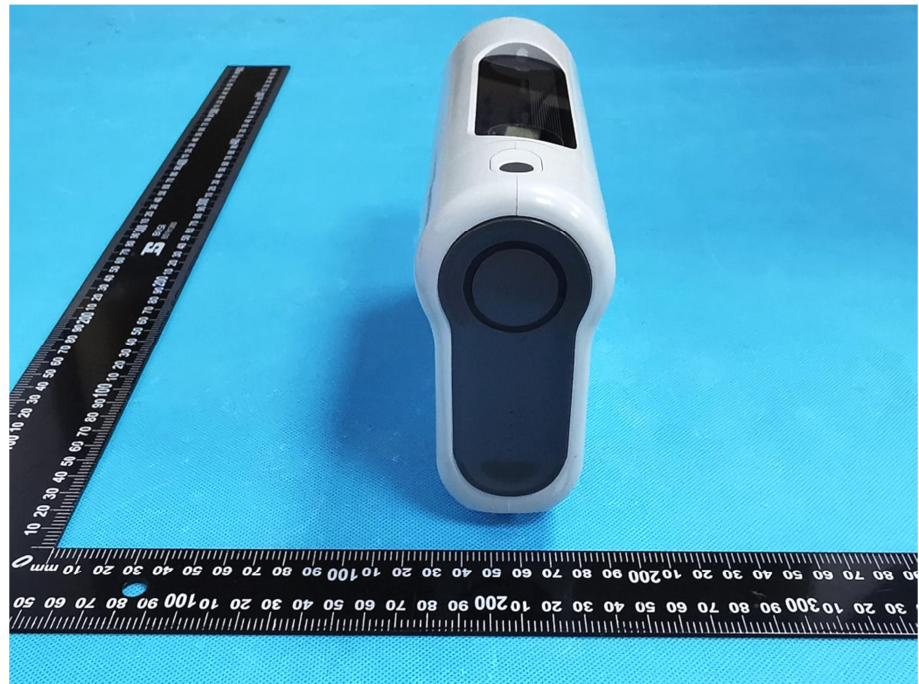
EUT View 4



EUT View 5



EUT View 6



EUT View 7



EUT View 8

