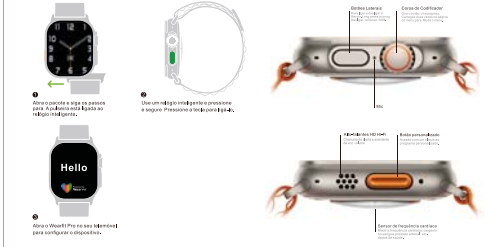


正面

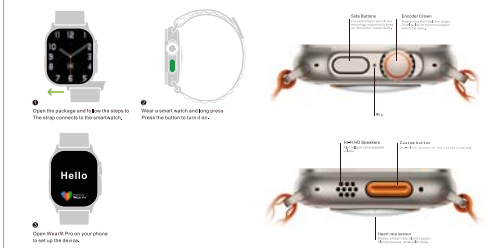
背面



Botão de botão: "Para o desligamento para cima e para baixo... Botão de desligamento para cima e para baixo... Botão de desligamento para cima e para baixo..."

Recursos: "Este produto não está equipado com adaptador de energia... Este produto não está equipado com adaptador de energia..."

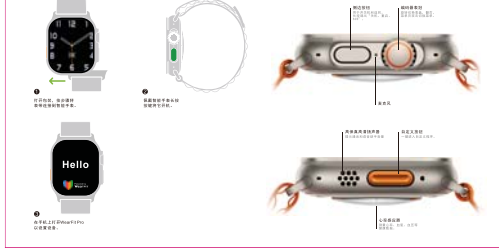
Perceber: "Este produto não está equipado com adaptador de energia... Este produto não está equipado com adaptador de energia..."



Watch working instructions: "Swipe left to see the previous page... Swipe right to see the next page... Swipe up to see the app drawer..."



Note: "This product is not equipped with a power adapter... This product is not equipped with a power adapter..."



Perceber: "Este produto não está equipado com adaptador de energia... Este produto não está equipado com adaptador de energia..."



注意: "本产品不配备电源适配器... 本产品不配备电源适配器..."

WATCH ULTRA: Microwave Form of Purchase, User Profile, Seller Profile, Product Information, Trademark, Origin, Serial number.

FCC Statement:

This device complies with part 15 of the FCC Rules. Operation is subject to the following two conditions:

- (1) This device may not cause harmful interference, and
- (2) this device

must accept any interference received, including interference that may cause undesired operation.

This equipment has been tested and found to comply with the limits for a Class B digital device, pursuant to part 15 of the FCC Rules. These limits are designed to provide reasonable protection against harmful interference in a residential installation. This equipment generates, uses and can radiate radio frequency energy and, if not installed and used in accordance with the instructions, may cause harmful interference to radio communications. However, there is no guarantee that interference will not occur in a particular installation. If this equipment does cause harmful interference to radio or television reception, which can be determined by turning the equipment off and on, the user is encouraged to try to correct the interference by one or more of the following measures:

- Reorient or relocate the receiving antenna.
- Increase the separation between the equipment and receiver.
- Connect the equipment into an outlet on a circuit different from that to which the receiver is connected.
- Consult the dealer or an experienced radio/TV technician for help.

Caution: Any changes or modifications not expressly approved by the party responsible for compliance could void the user's authority to operate the equipment.

This equipment complies with FCC radiation exposure limits set forth for an uncontrolled environment. This transmitter must not be co-located or operating in conjunction with any other antenna or transmitter.