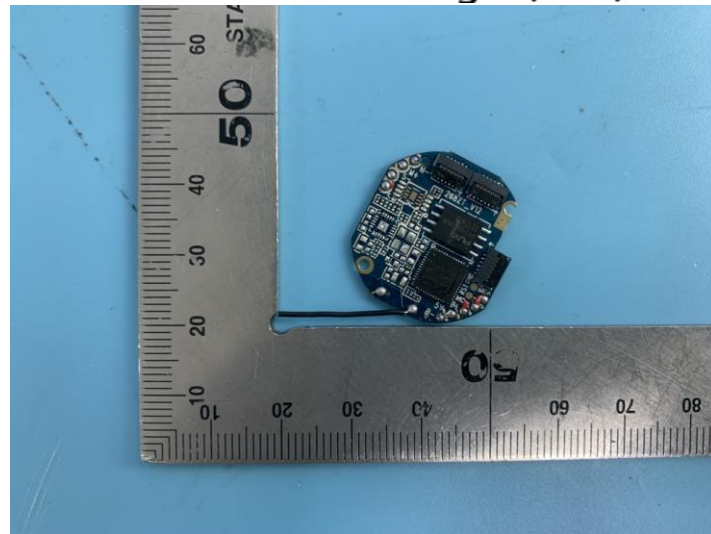


Shenzhen Lingdong Chuangxin Technology Co.,LTD  
1886,18/F,Block C,Electronic Technology Building,Huaqiang North Street,Futian  
District,Shenzhen City,China

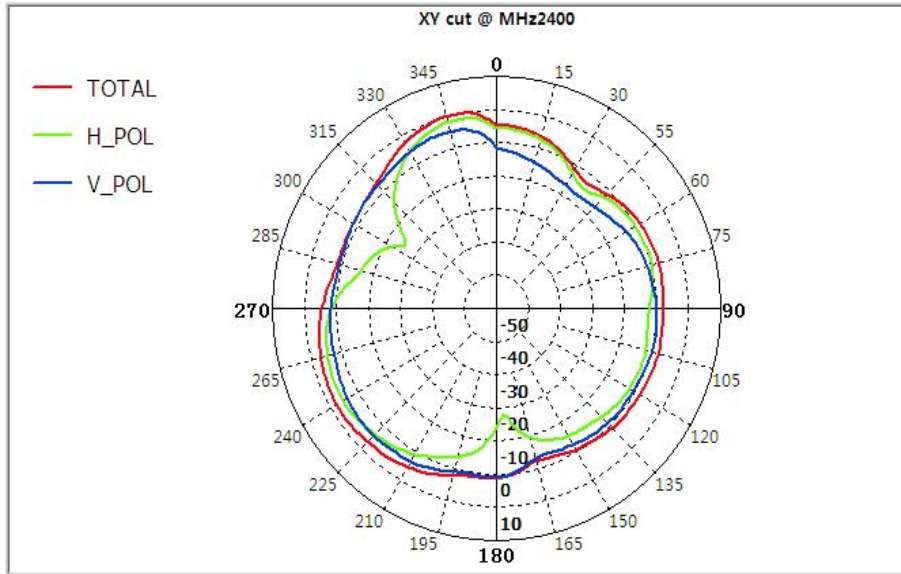
| Model                | 2.4GANT                 |         |         |          |         |         |
|----------------------|-------------------------|---------|---------|----------|---------|---------|
| Center Frequency     | Horizontal              |         |         | Vertical |         |         |
|                      | 2400MHz                 | 2450MHz | 2500MHz | 2400MHz  | 2450MHz | 2500MHz |
|                      | -1.72                   | -1.08   | -1.87   | -4.67    | -3.64   | -3.66   |
| MAX                  | -1.08 dBi               |         |         |          |         |         |
| Polarization         | Horizontal and Vertical |         |         |          |         |         |
| Azimuth Beam Pattern | Omnidi-directional      |         |         |          |         |         |
| Impedance            | 50 Ohm                  |         |         |          |         |         |
| Antenna Length       | 38.20mm                 |         |         |          |         |         |

Antenna Photo & Length(mm)



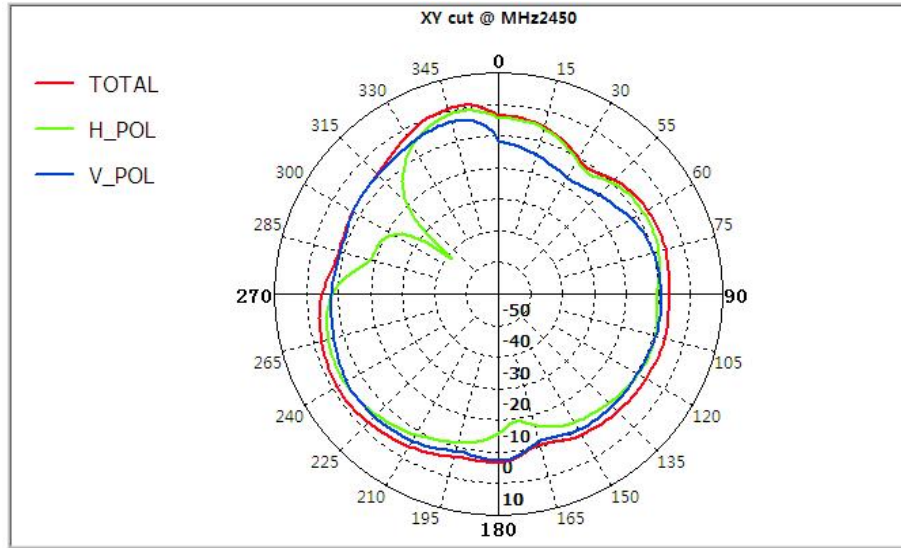
19mm

# 2400 MHz天线辐射方向图



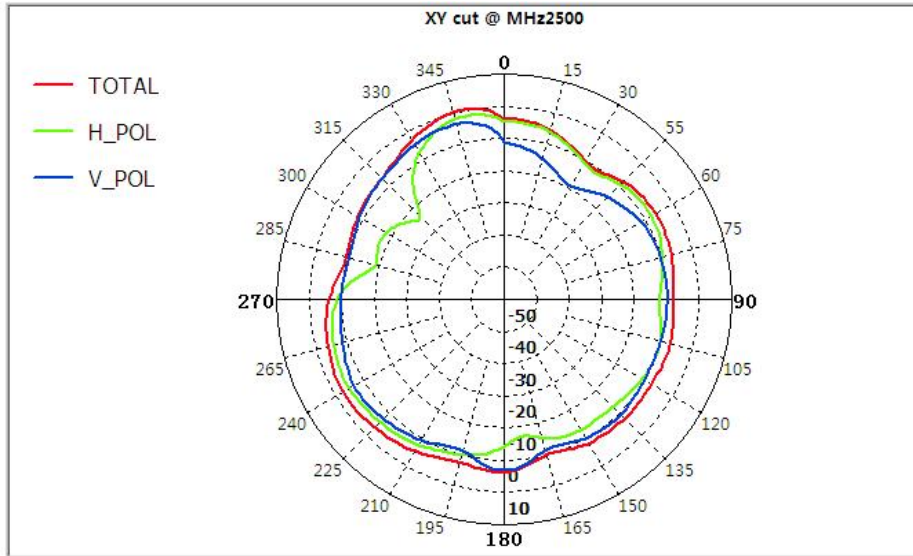
|              | Max    | Min     | Avg     |
|--------------|--------|---------|---------|
| <b>H-Pol</b> | -1.723 | -27.695 | -11.563 |
| <b>V-Pol</b> | -4.679 | -17.407 | -9.929  |

# 2450 MHz天线辐射方向图



|       | Max    | Min     | Avg    |
|-------|--------|---------|--------|
| H-Pol | -1.087 | -11.351 | -10.42 |
| V-Pol | -3.647 | -41.876 | -9.089 |

## 2500 MHz天线辐射方向图



|       | Max    | Min     | Avg     |
|-------|--------|---------|---------|
| H-Pol | -1.878 | -24.187 | -10.375 |
| V-Pol | -3.664 | -19.285 | -9.808  |