

# Shenzhen Xuhang Communication Technology Co., Ltd

<b>CUSTOMER</b>	
<b>CUSTOMER NO.</b>	<b>RT6710-ATMG06-V5.0</b>
<b>PART NAME</b>	<b>WIFI LAN</b>
<b>SUPPLIER NO.</b>	<b>XH230063 (L=82mm)</b>

<b>CUSTOMER APPROVED BY</b>		
<b>APPROVAL</b>	<b>CHIEF</b>	<b>SUPERVISOR</b>

<b>DESIGN</b>	<b>CHECK</b>	<b>APPROVAL</b>
<b>Luo</b>	<b>Robert</b>	<b>SHANG</b>

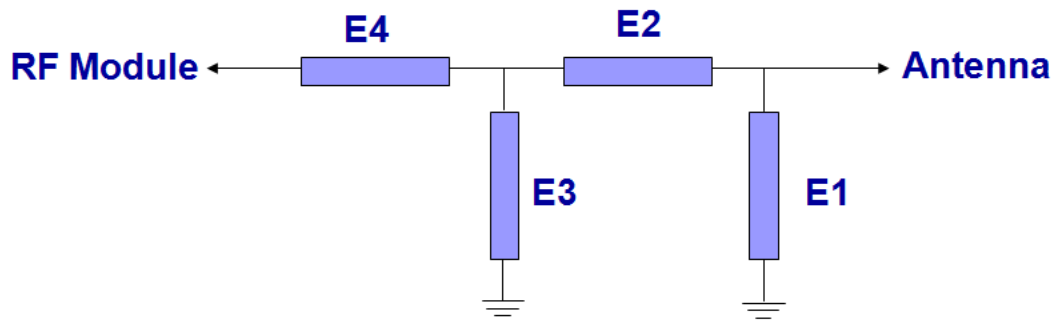
**Date:September 7, 2023**



# TEST REPORTS

Frequency	WIFI(2400~2500MHz;5150~5850MHz)
Impedance	50 Ohm Nominal
V.S.W.R	$\leq 2.0$
Return Loss	-10dB Max
Radiation	Omni-directional
Gain(Peak)	4.72dBi
Polarization	Linear,Vertical
Admitted Power	1W
Connector	I-PEX I
<b>Physical Properties</b>	
Antenna Material	FPC
Cable Type	O.D.0.81mm
Operating Temp.	-10-+60°C
Storage Temp.	-10-+70°C
Cable Color	Black

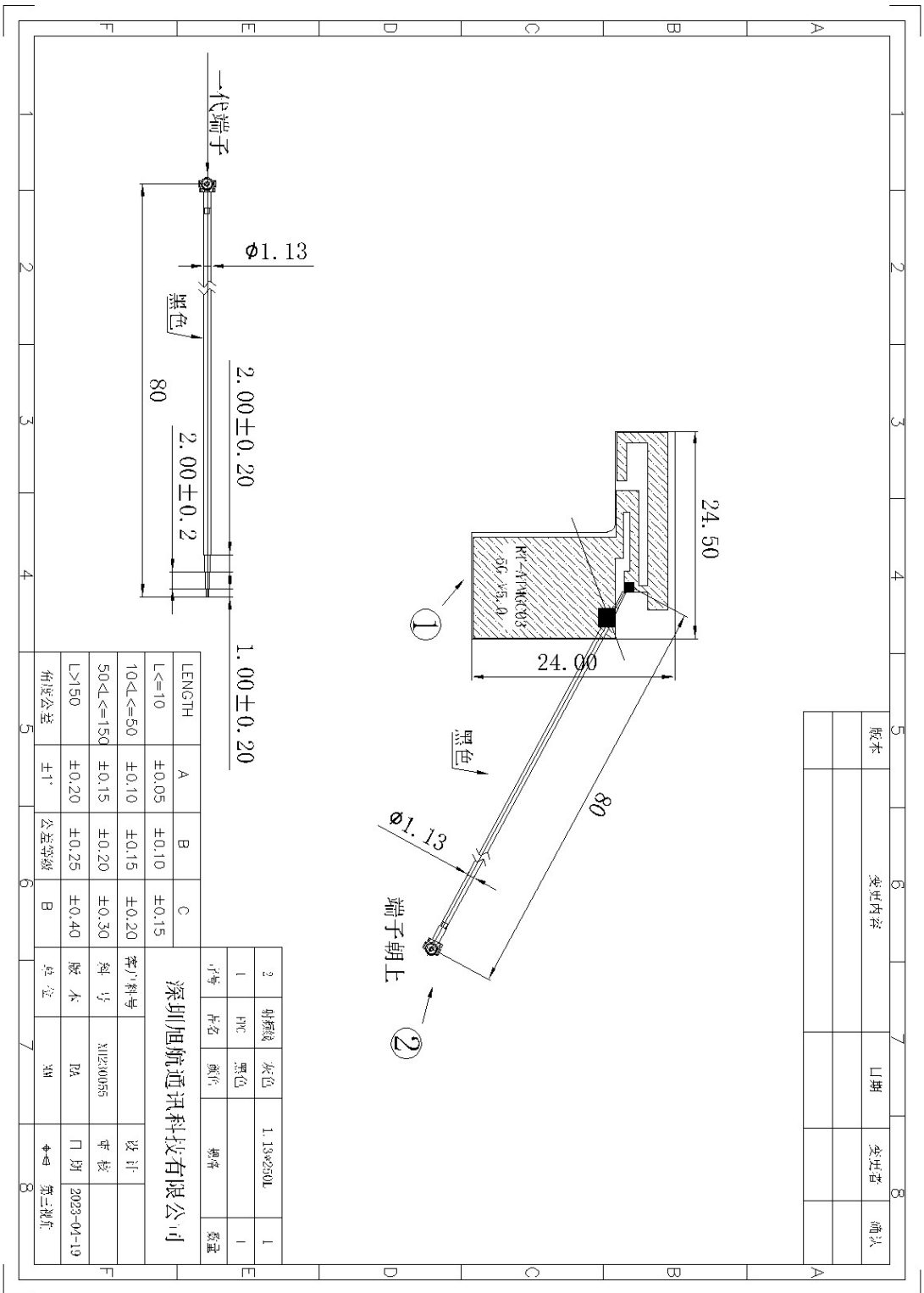
# Matching Circuits



Element	Value	Vender
E1(0402)		
E2(0402)	0Ω	
E3(0402)		
E4(0402)	0Ω	

The original matching circuit has not been modified

**DRAWING**

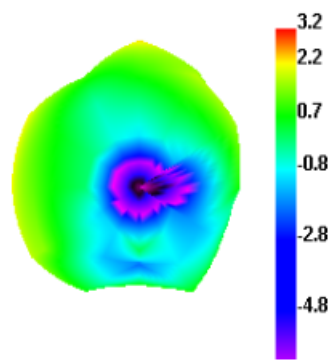


## Test Data

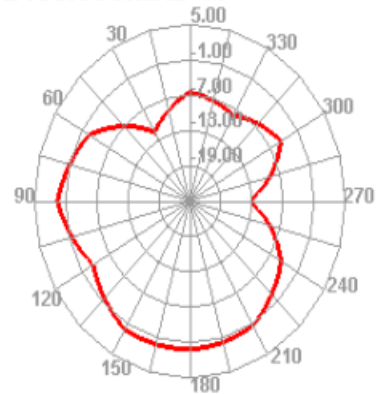
Freq (MHz)	Effi (%)	Gain (dBi)
2400	57.05	3.58
2410	58.95	3.84
2420	62.94	3.97
2430	62.4	4.72
2440	63.06	4.42
2450	62.51	3.59
2460	59.15	3.42
2470	59.47	3.4

Freq (MHz)	Effi (%)	Gain (dBi)
5150	44.67	2.18
5550	53.92	3.72
5850	52.64	2.75

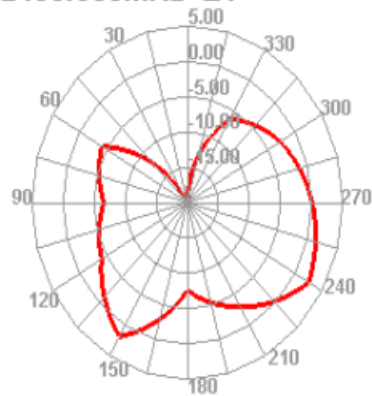
2400.000MHz



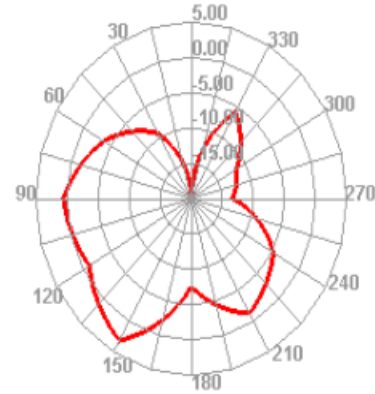
2400.000MHz H



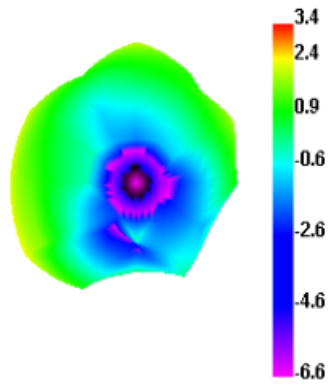
2400.000MHz E1



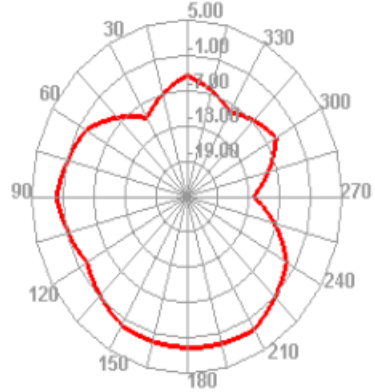
2400.000MHz E2



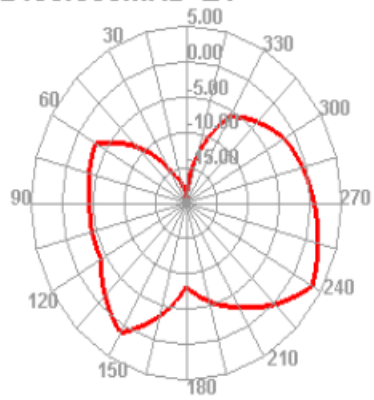
2450.000MHz



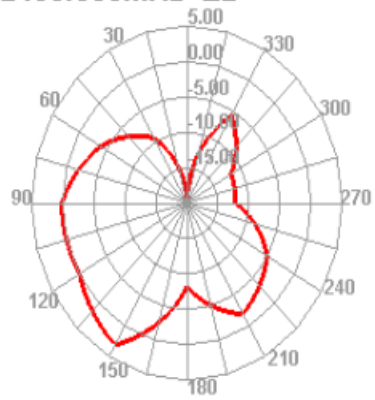
2450.000MHz H



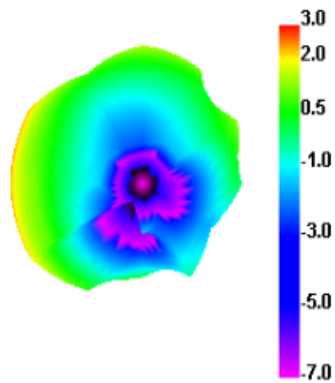
2450.000MHz E1



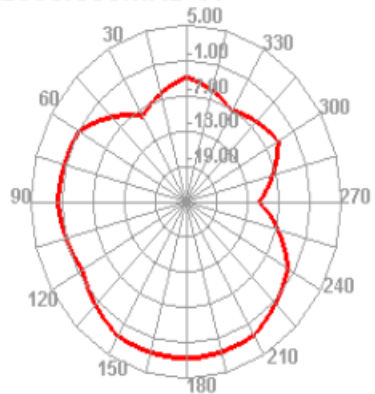
2450.000MHz E2



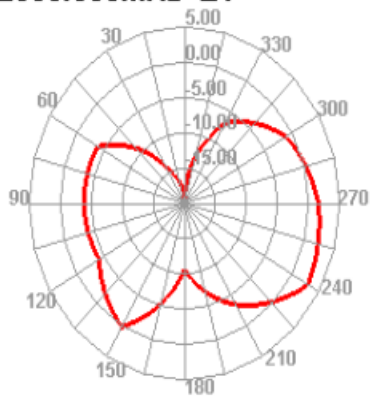
2500.000MHz



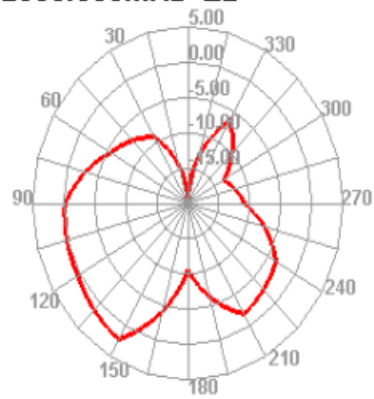
2500.000MHz H



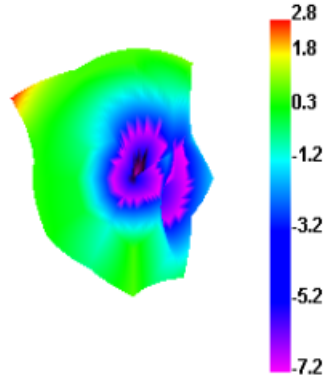
2500.000MHz E1



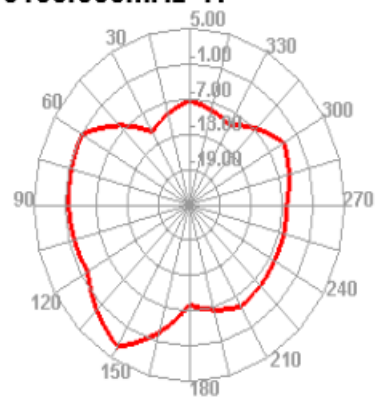
2500.000MHz E2



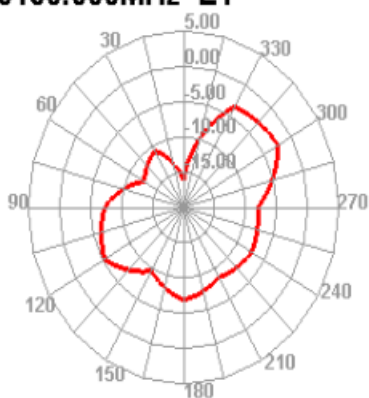
5150.000MHz



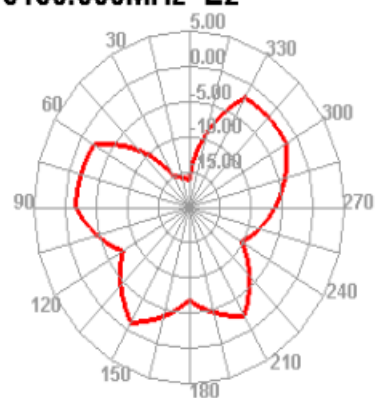
5150.000MHz H



5150.000MHz E1

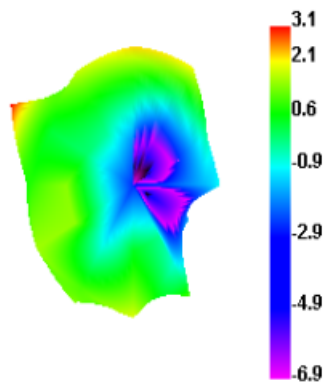


5150.000MHz E2

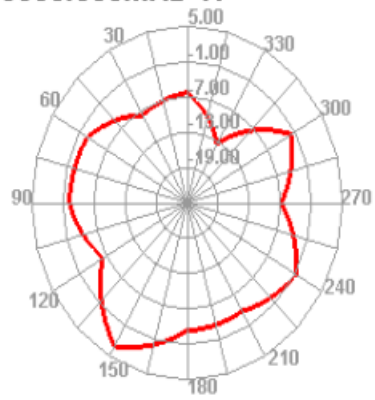




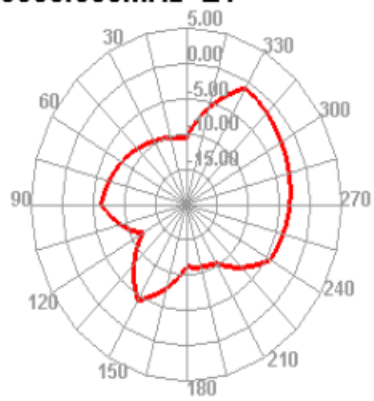
5500.000MHz



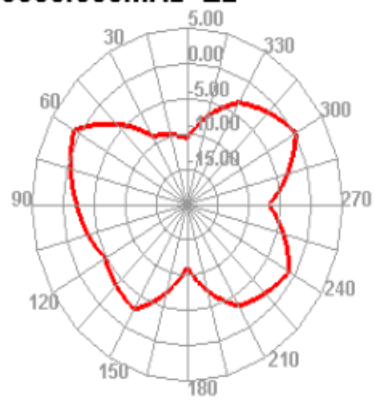
5500.000MHz H



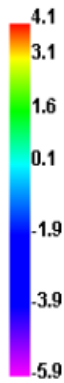
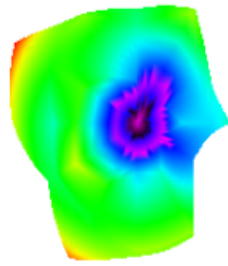
5500.000MHz E1



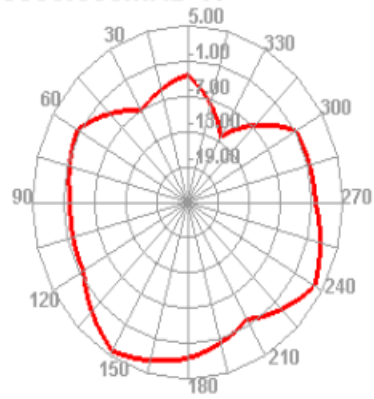
5500.000MHz E2



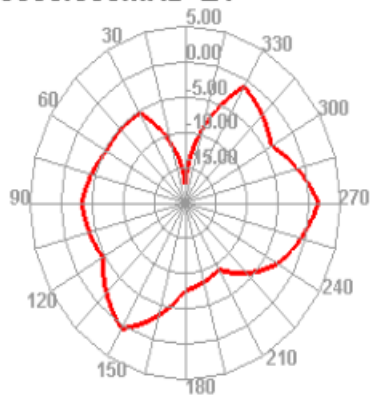
5850.000MHz



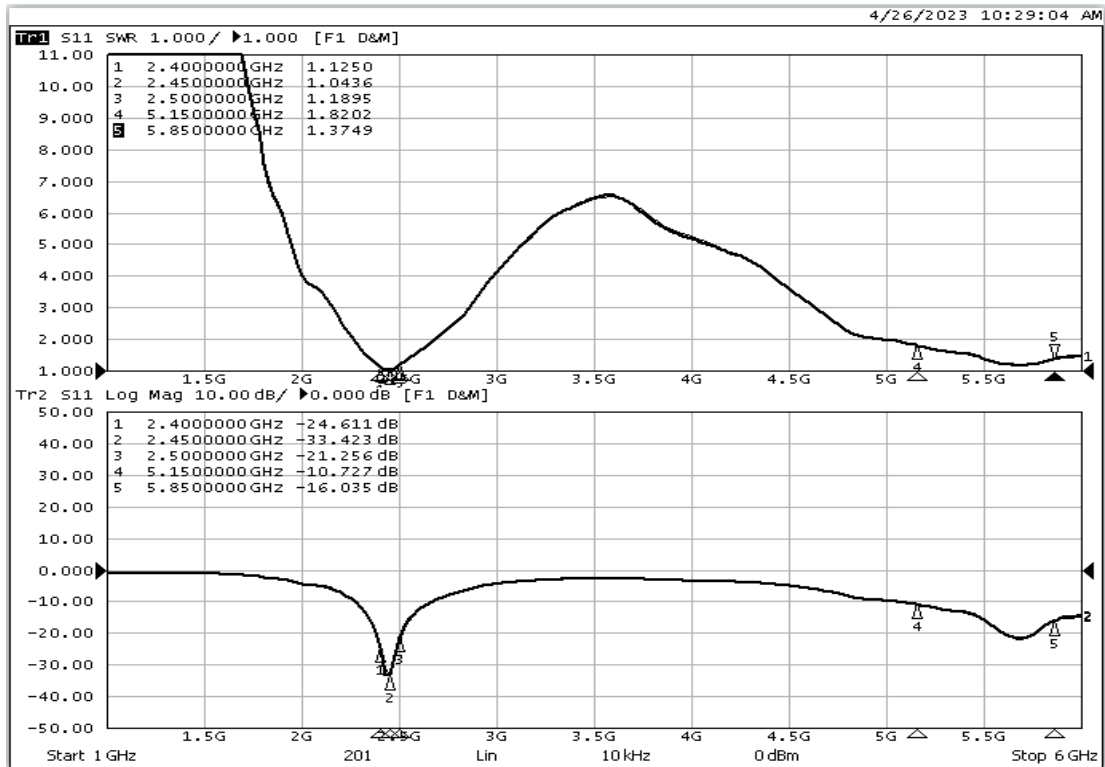
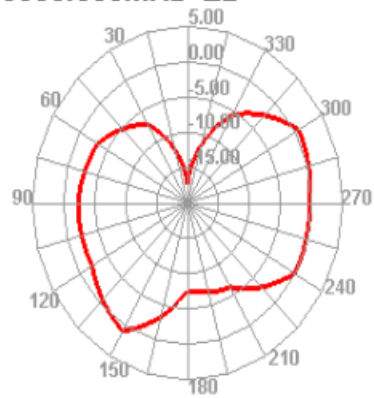
5850.000MHz H



5850.000MHz E1



5850.000MHz E2





Application Information					
O4Version		5.256.357			
TotalTime		6m 59s 335ms			
AdditionalInfor		802.11b : 11Mbps			
Test Result	Wifi 2G TRP			Test Result	Wifi 2G TIS
	1	6	11		11
Frequency (MHz)	2412	2437	2462	Frequency (MHz)	2462
Txp Ave (dBm)	15.96	15.96	15.99	Sens Ave (dBm)	-81.26

Application Information					
O4Version		5.256.357			
TotalTime		5m 4s 158ms			
AdditionalInfor		802.11g : 54Mbps			
Test Result	Wifi 2G TRP			Test Result	Wifi 2G TIS
	1	6	11		11
Frequency (MHz)	2412	2437	2462	Frequency (MHz)	2462
Txp Ave (dBm)	14.49	15.06	15.76	Sens Ave (dBm)	-69.34

Application Information					
O4Version		5.256.357			
TotalTime		5m 6s 607ms			
AdditionalInfor		802.11n : MCS7			
Test Result	Wifi 2G TRP			Test Result	Wifi 2G TIS
	1	6	11		11
Frequency (MHz)	2412	2437	2462	Frequency (MHz)	2462
Txp Ave (dBm)	15.32	15.89	14.23	Sens Ave (dBm)	-68.39

Application Information					
O4Version		5.256.357			
TotalTime		7m 14s 711ms			
AdditionalInfor		802.11a : 54Mbps			
Test Result	Wifi 5G TRP			Test Result	Wifi 5G TIS
	36	116	161		161
Frequency (MHz)	5180	5580	5805	Frequency (MHz)	5805
Txp Ave (dBm)	15.13	14.26	16.16	Sens Ave (dBm)	-76.25

## Antenna assembly position

