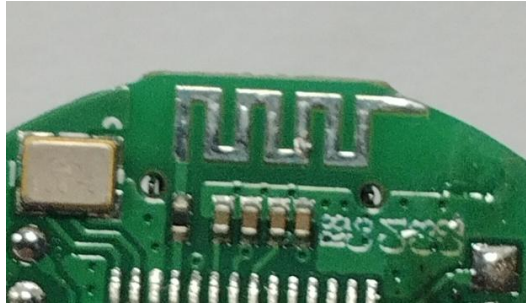
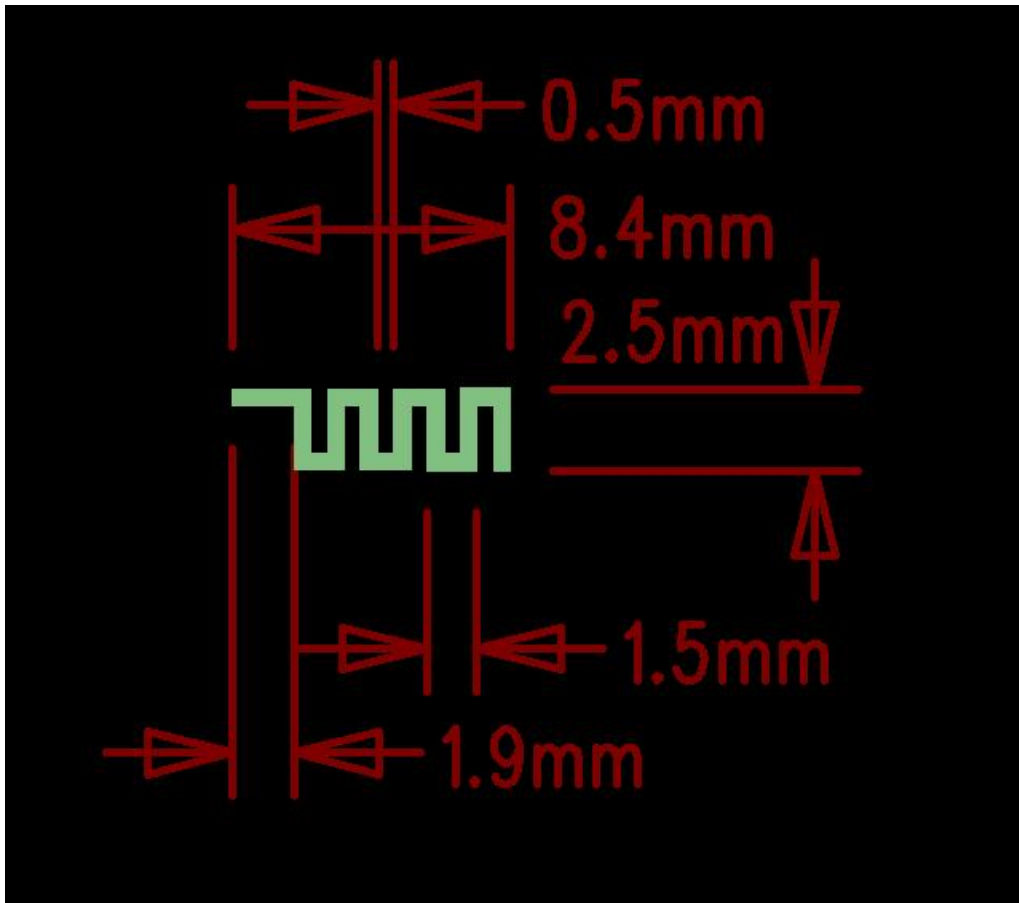


PCB ANTENNA



1. Measurement of PCB antenna :

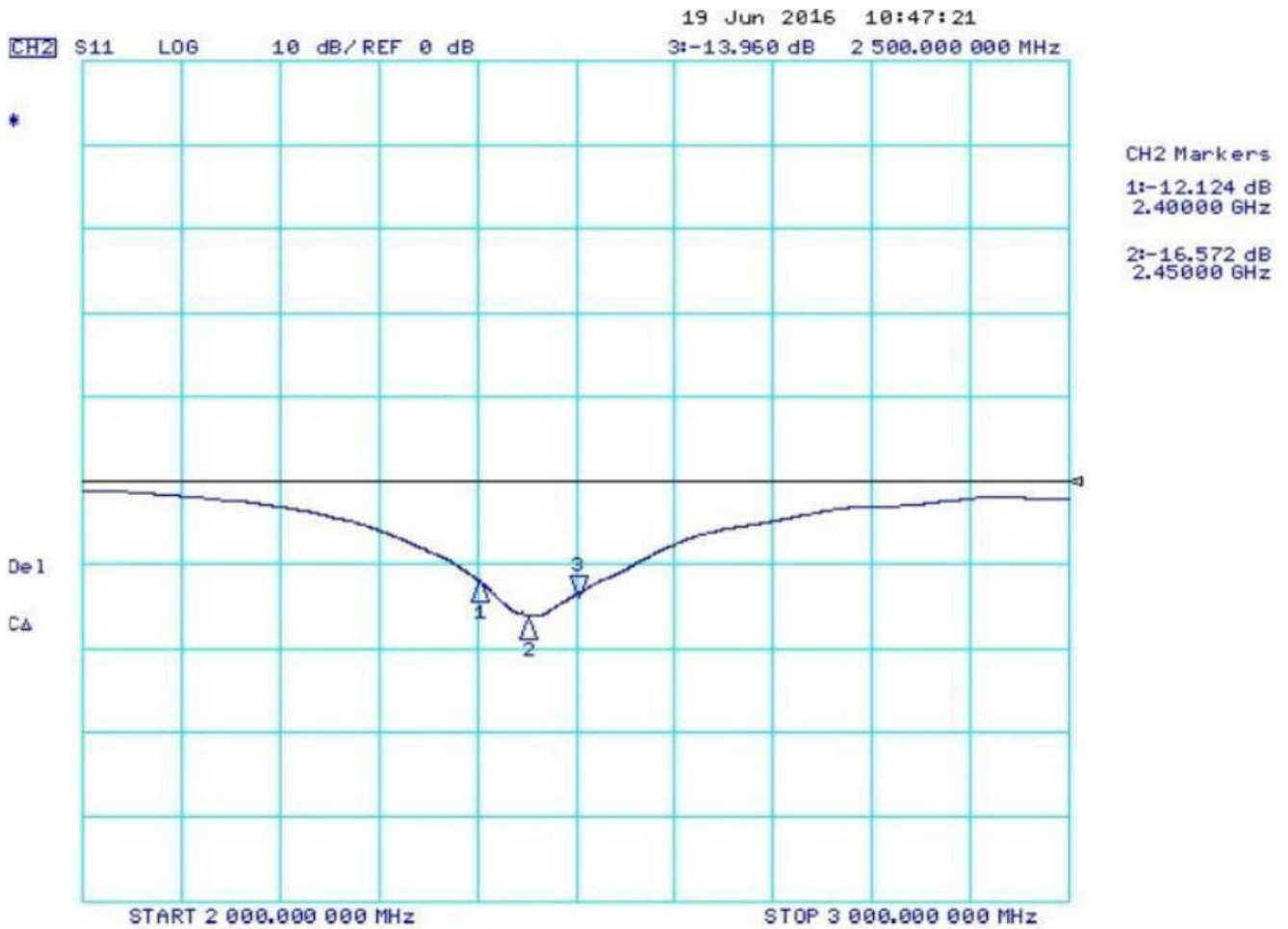


2. Equipment used :



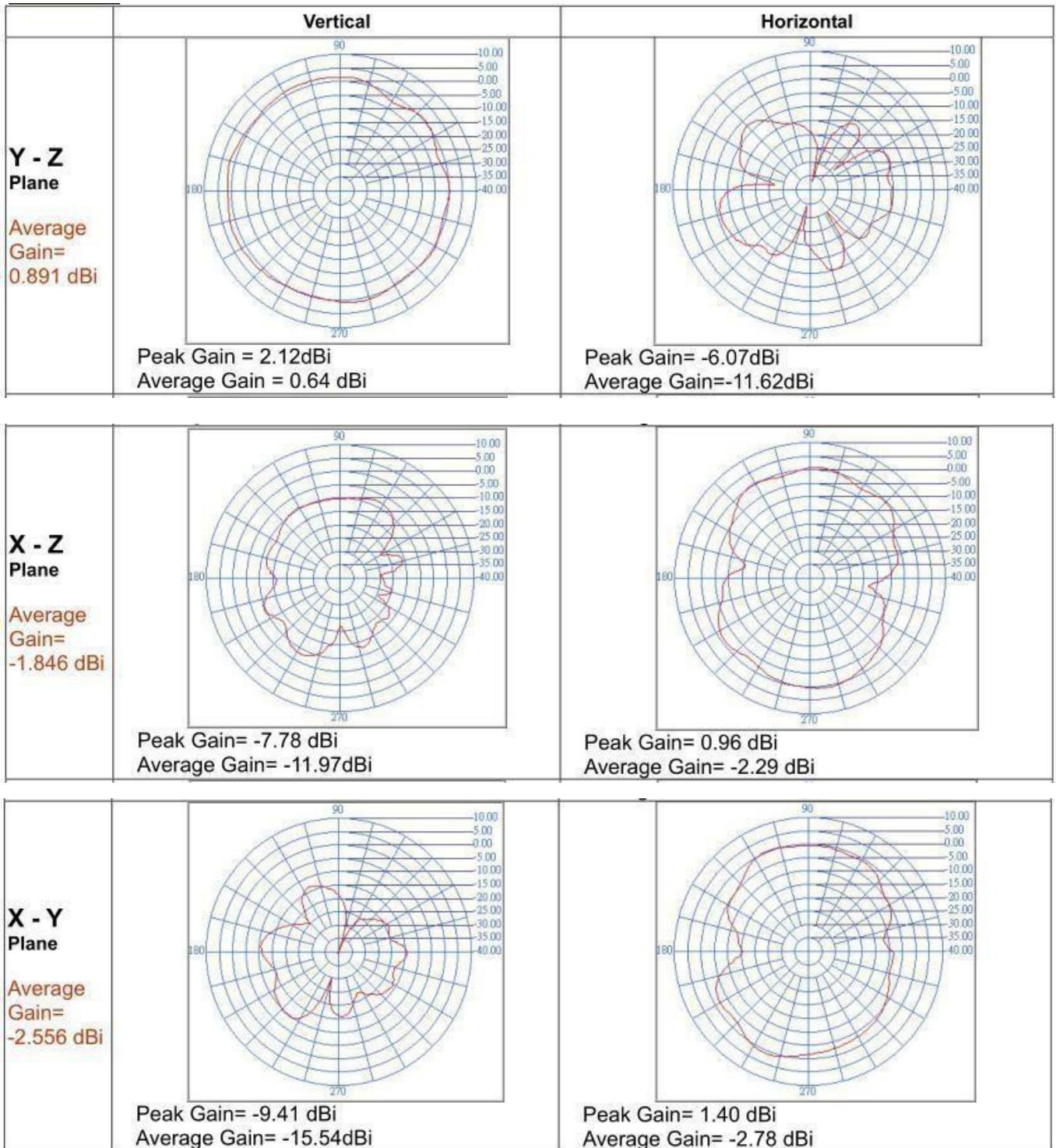
3. Antenna Parameter :

Central frequency 2.45GHz



4. RADIATION PATTERN

radiation pattern and gain were dependent on measurement board design, the specification of antenna was measured base on the PCB size.



5. Impedance value : close to 50 ohm



6. SWT Value:1.2

