

AROMA360

WIRELESS PRO



INSTRUCTION AND CARE MANUAL

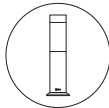
WWW.AROMA360.COM

SUPPORT@AROMA360.COM

WELCOME

Welcome to the world of Aroma360 Luxury Scenting! Introducing the Wireless Pro, your gateway to crafting a truly distinctive atmosphere with ease. Harnessing the power of state-of-the-art Cold Air Diffusion technology, this elegant and portable diffuser offers a seamless and efficient solution to elevate any environment of your choice.

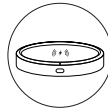
WHAT'S INCLUDED:



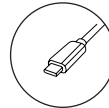
Wireless Pro



Remote Control



Wireless Pro Charging Base



USB-C Adapter

Table of Contents:

| | |
|------------------------------------|----|
| What's Included | 2 |
| About the Wireless Pro | 4 |
| Warranty | 5 |
| Wireless Pro | 6 |
| Adding your Wireless Pro Oil | 7 |
| Wireless Pro LED Color Key | 8 |
| Remote Control Functions | 9 |
| Caution | 10 |
| Troubleshooting Guide | 11 |
| Wireless Pro EOL Disposal | 12 |

Scan the QR code to watch the startup video and explore
the full range of portable luxury scenting.



ABOUT THE WIRELESS PRO

Embark on your scenting journey with the user-friendly Wireless Pro. Its sleek and portable design, coupled with waterless and heatless operation, makes it a convenient choice. Experience plug and play portability and effortless scent change capabilities.

Utilizing advanced cold air atomization technology, this diffuser ensures a residue-free and safe scenting experience for both pets and children.

| SPECIFICATIONS | |
|------------------------------|--|
| Weight of Diffuser Only | 1.8 lb |
| Weight of Diffuser Base Only | 0.6 lb |
| Charging Cable length | 150cm |
| Charging Power | 11W |
| Size | 2.5" diameter, 11.5" tall without charging base. 12" tall with charging base. |
| Oil bottle capacity | 50ml |
| Coverage | 100-300 CBM / 400sq.ft. |
| Cord | DC 13.7V 1.2A |
| Noise | < 45dB |
| Lifespan of motor | 20,000h medium concentration level diffusing. |

WARRANTY

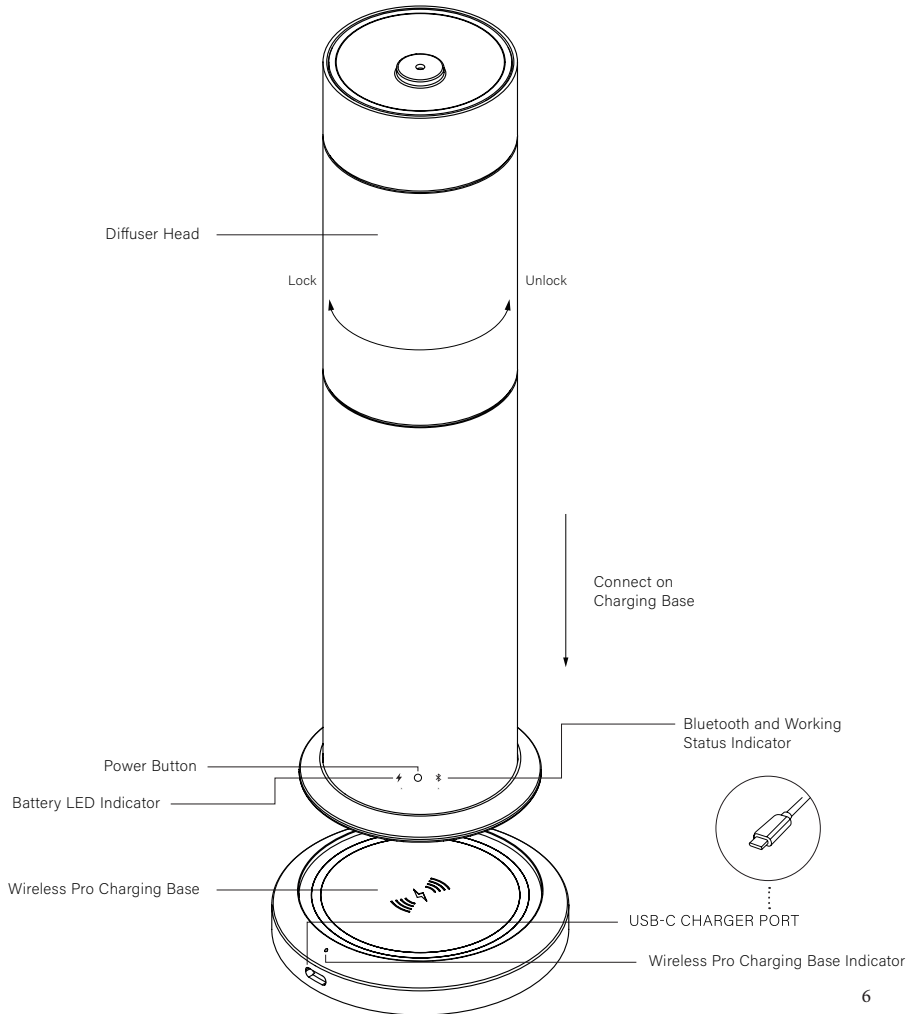
The Wireless Pro is backed by a 90-day warranty, commencing from the date of purchase. This warranty covers new machines exclusively and does not extend to resold or second-hand products. During the 90-day period, Aroma360 offers repair services and replacement parts to ensure your satisfaction with the Wireless Pro. It is important to note that the warranty does not cover Aroma360 fragrance oils, as they are sold separately.

The original order number is required for the warranty process.

Warranty Exclusions:

- Use of non-Aroma360 oils.
- Damage caused by accidents or fire.
- Improper usage of the diffuser.
- Repairs conducted by unauthorized sources.
- Damage during transportation.
- Failure to follow proper cleaning procedures.
- Use of non-Aroma360 parts.
- Diffusers not purchased from Aroma360 (affiliated stores and sites).
- Returns without proper authorization.

WIRELESS PRO



ADDING YOUR WIRELESS PRO OIL

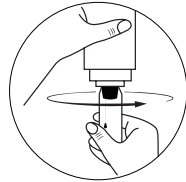
STEP 1

To unlock your Wireless Pro, firmly hold the base of the device and rotate the diffuser head counterclockwise.



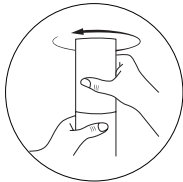
STEP 2

With your Wireless Pro Fragrance Oil One Time Use bottle (sold separately), screw the bottle into the bottom of the diffuser head.



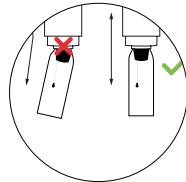
STEP 3

Attach the diffuser head to the base and secure it by rotating the unit clockwise until it locks in place.



Important!

Make sure the bottle is screwed in tight and parallel to the top half of the Wireless Pro.



WIRELESS PRO LED COLOR KEY

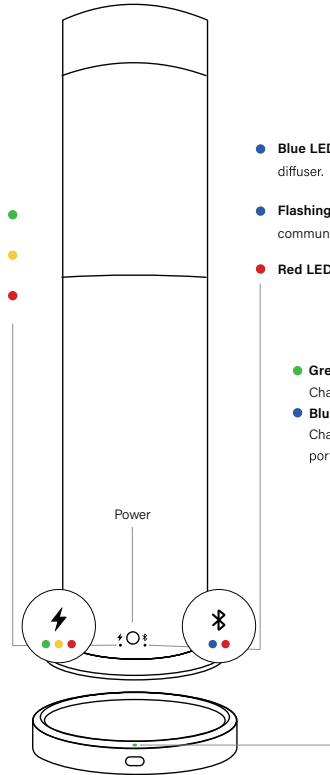
Green LED Light < 100%

Yellow LED Light < 70%

Red LED Light < 30%

Charging Note:

- The Wireless Pro receives a full charge within 6-8 hours on the charging base.
- The Wireless Pro functions portably for 12 hours.



● **Blue LED Light** - Indicates Wireless Pro is turned on diffuser.

● **Flashing Blue LED Light**- Indicates Wireless Pro is communicating with the remote.

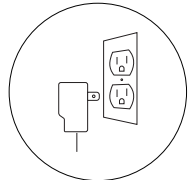
● **Red LED Light** - Indicates the device is turned off.

● **Green LED Light** - Indicates Wireless Pro Charging Base power

● **Blue LED Light** - Indicates Wireless Pro Charging Base is charging Wireless Pro portable diffuser

How to use the Wireless Pro Charging Base

Connect the USB-C adapter to the Wireless Pro charger port (located on the Wireless Pro Charging Base) and plug it into a 110V power outlet. Position the power cord to prevent it from being a tripping hazard.



REMOTE CONTROL FUNCTIONS



How to sync remote to Wireless Pro

Please follow the syncing instructions if the remote is not connected to the Wireless Pro.

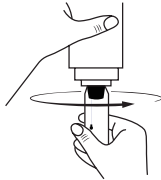
- ① Remove the plastic from the bottom of the remote covering the battery.
- ② Ensure the Wireless Pro unit is turned OFF.
- ③ While pressing the power button on the remote, press the power button simultaneously on the Wireless Pro to sync. You will then see the Blue LED Light on the Wireless Pro blinking, indicating that the remote and the Wireless Pro have connected.
- ④ Set the concentration level that fits your mood and start the Aroma360 Experience.

Note: To turn on/off the Wireless Pro, push the power button on the remote.

Note: If the remote is mistakenly misplaced, The Wireless Pro is still usable. Press and hold the power button for five seconds, and the unit will turn on and begin running at medium strength until powering off the unit.

CAUTION

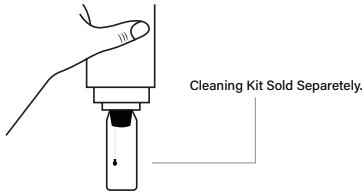
To ensure safe usage, follow these precautions



To prevent damage to the unit, it is important not to turn the Wireless Pro upside down while there is oil inside. This precautionary measure ensures the proper functioning and longevity of the device.



To avoid leakage and potential damage, it is crucial to keep the Wireless Pro in an upright position at all times. Avoid tilting or placing the device on its side, as this can lead to unwanted leaks and harm the unit.



For optimal performance, it is recommended to clean the unit every 2 months by running alcohol through the diffuser for 15-30 minutes. This cleaning process helps remove any residue and maintain the functionality of the unit.

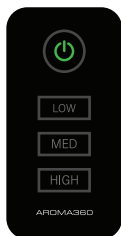


Please refrain from attempting to disassemble the unit. If you encounter any issues with the unit, we recommend reaching out to our support team by emailing support@aroma360.com.

WIRELESS TROUBLESHOOTING GUIDE

| PROBLEM | SOLUTION |
|---------------------------------------|---|
| Motor Running but Device not Scenting | Make sure there is oil in the bottle and the bottle is screwed in straight. |
| Remote | <p>Ensure the plastic battery protection film has been removed from the back of the remote control.</p> <p>Battery may need to change after long use (Lithium Battery CR2032).</p> |
| Loud Noise | Email support@aroma360.com as the unit can be sent in for our trade-in program. |
| Motor not running | <p>Device may be in pause/ rest mode between cycles. Press the green "on" button and the device will run continuously.</p> <p>Open the unit and inspect the metal prongs on the inside cavity of the device to make sure they are not pushed down as this will impede the operation of the pump/ motor. If they are out of place, simply pop the prong up to restore connectivity.</p> <p>Reattach the unit and ensure the diffuser head and the base of the wireless pro is aligned and firmly closed.</p> |

WIRELESS PRO REMOTE



| | |
|------------|------------------------|
| Power | Lithium Battery CR2032 |
| Voltage | 3.0 V |
| Capacity | 150mAH |
| Technology | Infrared |
| Buttons | 4-button |
| Dimensions | 40mm x 86mm x 7mm |

WIRELESS PRO EOL DISPOSAL

Federal law states that certain batteries must be recycled, and lithium-ion batteries fall within this criteria. The "Battery Act" (The Mercury-Containing and Rechargeable Battery Management Act of 1996) was set out to ensure that batteries such as li-ion batteries can be recycled for reuse, instead of being released into the environment.

To reduce toxic chemicals in the environment, the EPA (Environmental Protection Agency) created the Universal Waste Regulation to encourage safe recycling and disposal of harmful waste, such as lithium-ion batteries.

To avoid paying hefty compliance fees to the EPA, companies outsource their disposal to companies that process this disposal domestically or internationally -where environmental laws are more lenient. Li-ion batteries must therefore be recycled at certified battery electronics recyclers that accept batteries rather than being discarded in the trash or put in municipal recycling bins.

There are two types of lithium batteries that the U.S. consumers use and need to manage at the end of their useful life: single-use, non-rechargeable lithium metal batteries and re-chargeable lithium-polymer cells (Li-ion, Li-ion cells).

Li-ion batteries are made of materials such as cobalt, graphite and lithium which are considered critical minerals. If batteries are disposed of in the trash or placed in the municipal recycling bin with household recyclables such as plastic, paper or glass, they may become damaged or crushed in transport or from processing and sorting equipment, creating a fire hazard.

EPA recommendation: Find a location to recycle Li-ion batteries and products that contain Li-ion batteries using one of the suggested links; do not put them in the trash or municipal recycling bins.

WIRELESS PRO EOL DISPOSAL

Li-ion batteries in electronics: Send electronic devices containing Li-ion batteries to certified electronics recyclers, participating retailers and recyclers in electronics takeback services or contact your local solid waste or household hazardous waste collection program for more options.

Li-ion batteries that are easily separated from the product (e.g., power tools): Find a recycling location near you to properly dispose of Li-ion batteries. Send individual batteries to specialized battery recyclers or retailers that are participating in takeback services or contact your local solid waste or household hazardous waste program for more options.

Two resources for finding a recycler are the Earth 911 database and Call2Recycle.

Handling precautions: Place each battery or device containing a battery in a separate plastic bag. Place non-conductive tape (e.g., electrical tape) over the battery's terminals. If the Li-ion battery becomes damaged, contact the battery or device manufacturer for specific handling information. Even used batteries can have enough energy to injure or start fires. Not all batteries are removable or serviceable by the user. Heed battery and product markings regarding safety and use.

EPA recommendation: Contact the manufacturer, automobile dealer or company that installed the Li-ion battery for management options; do not put it in the trash or municipal recycling bins.

Because of the size and complexity of these battery systems, medium and large-scale Li-ion batteries may not be able to be removed by the consumer. Refer to the manufacturer's instructions and heed warnings and safety instructions.

FCC STATEMENT

This device complies with part 15 of the FCC Rules. Operation is subject to the following two conditions: (1) This device may not cause harmful interference, and (2) this device must accept any interference received, including interference that may cause undesired operation.

Note: This equipment has been tested and found to comply with the limits for a Class B digital device, pursuant to part 15 of the FCC Rules. These limits are designed to provide reasonable protection against harmful interference in a residential installation. This equipment generates, uses and can radiate radio frequency energy and, if not installed and used in accordance with the instructions, may cause harmful interference to radio communications. However, there is no guarantee that interference will not occur in a particular installation. If this equipment does cause harmful interference to radio or television reception, which can be determined by turning the equipment off and on, the user is encouraged to try to correct the interference by one or more of the following measures:

- Reorient or relocate the receiving antenna.
- Increase the separation between the equipment and receiver.
- Connect the equipment into an outlet on a circuit different from that to which the receiver is connected.
- Consult the dealer or an experienced radio/TV technician for help.

Note: The Grantee is not responsible for any changes or modifications not expressly approved by the party responsible for compliance. Such modifications could void the user's authority to operate the equipment.

The device has been evaluated to meet general RF exposure requirement.

To maintain compliance with FCC's RF exposure guidelines, the distance must be at least 20 cm between the radiator and your body, and fully supported by the operating and installation configurations of the transmitter and its antenna(s).