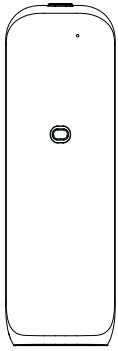


A-60 User Manual

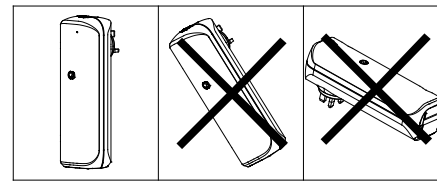


Download app

Please read the user manual carefully before using the product and keep it in a safe place.

Safety Precautions:

1. Do not use overloaded power supplies, sockets, and damaged power cords and plugs. If used, it may endanger your safety and may cause fire. If this happens, please promptly report to the sales or after-sales department and request replacement.
2. Please do not open the inside of the device to avoid the device damage. If the device works in error, please read the user manual carefully, follow the normal procedure or consult sales and after-sales.
3. When the device is working, do not disassemble the device or shake the device vigorously, to avoid the device to work abnormally.
4. Do not put the device or power adapter in water or watering, do not use a watering power adapter.
5. When encountering natural weather thunder, do not operate the device or touch the power cord to avoid the risk of electric shock.
6. When the device is already filled with liquid (essential oil), do not invert, tilt or rotate the device to device liquid spillage and damage the device.

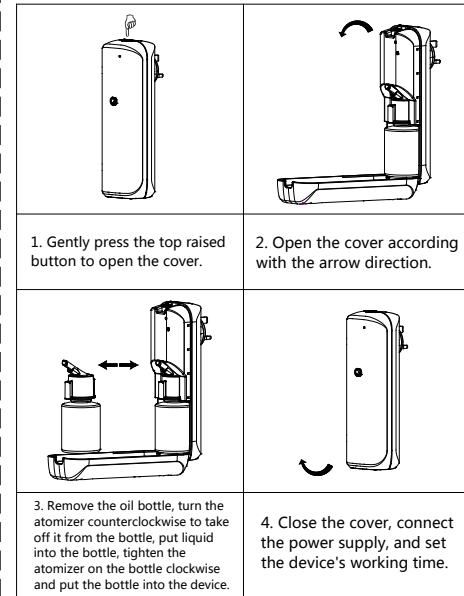
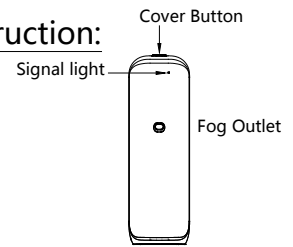


Product Specification:

Model No	A-60
Oil Capacity	100ML
Coverage Area	100m ²
Power	2W
Oil Consumption	1.0g
Machine Size	67x66x208mm
N.W	295g
Voltage	AC110~240V
Noise	38dba

Oil consumption means : the device in the maximum setting, the test oil is Shangri-La, the test oil consistency is 9.5MPA.S, the room temperature is 30 °C, the air humidity is 45%. Above is for reference.

Install Instruction:



User Manual

1. Scan the QR code of the cover or search the "Scent Master" app in the app store to download and install.

2. Open the app homepage interface, click [Stand Alone Mode] (as shown in Figure 1)



3. Click the search device to pop up the password input dialog box and enter the initial password 9999 (as shown in Figure 2)

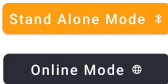


Figure 1

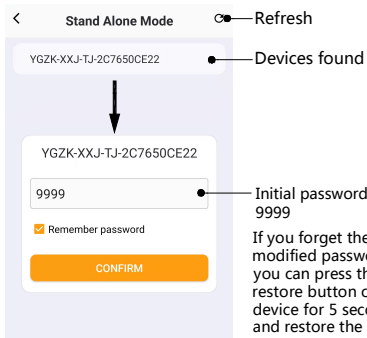
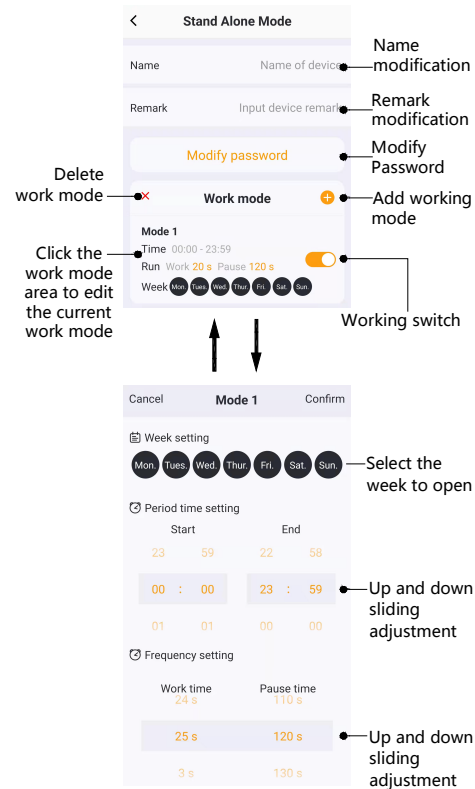


Figure 2

If you forget the modified password, you can press the restore button on the device for 5 seconds and restore the initial password 9999 after hearing "didi" twice

4. Working settings



Device Maintains:

Maintain the device every 6 months, or replace the essential oil if the scent weaker.

1. Open the device cover, take off the oil bottle.
2. Each time replace the essential oil, should clean the oil pipe filter.
3. Pour an appropriate amount of alcohol into the essential oil bottle and clean it;
4. Put few alcohol into the oil bottle, install the bottle to the device, power on the device and work 5 minutes.
5. Replace PE gasket

Fault Resolution:

Device Fault	Solution
Device not work	-Check if use wrong power supply. -Check if the power is on. -Check the setting of device work time.
No atomization	-Check if the pump work normal, if the nozzle blocked. -Check if the fog outlet seal ring broken or fall off. -Check if the oil pipe blocked or fall off.
Weak atomization	-Check if the seal ring of fog outlet pipe damage. -Check if the nozzle blocked. -Check if the connection of atomizer and nozzle loose.
Oil leak	-Check if the atomizer broken. -Check if the gasket broken and need change. -Check if the connection of oil bottle and atomizer close tighten.
Abnormal noise	-Pump loose, fix the pump. -Pump broken, change new pump.

After Sale Service:

The warranty period of the equipment is 1 year from the date of sale. Easily damaged accessories such as housing, wire and outer pipe are not covered by the warranty, and man-made damage and accident damage are not covered by the warranty. If the warranty period is exceeded, we will charge maintenance fees.

Warranty Card:

Maintain Date	Maintain Item	Maintain Company	Maintain Staff

FCC Warning:

This equipment has been tested and found to comply with the limits for a Class B digital device, pursuant to part 15 of the FCC Rules. These limits are designed to provide reasonable protection against harmful interference in a residential installation. This equipment generates, uses and can radiate radio frequency energy and, if not installed and used in accordance with the instructions, may cause harmful interference to radio communications. However, there is no guarantee that interference will not occur in a particular installation. If this equipment does cause harmful interference to radio or television reception, which can be determined by turning the equipment off and on, the user is encouraged to try to correct the interference by one or more of the following measures:

- Reorient or relocate the receiving antenna.
- Increase the separation between the equipment and receiver.
- Connect the equipment into an outlet on a circuit different from that to which the receiver is connected.
- Consult the dealer or an experienced radio/TV technician for help.

Caution: Any changes or modifications to this device not explicitly approved by manufacturer could void your authority to operate this equipment.

This device complies with part 15 of the FCC Rules. Operation is subject to the following two conditions:

(1) This device may not cause harmful interference, and (2) this device must accept any interference received, including interference that may cause undesired operation.

This equipment complies with FCC radiation exposure limits set forth for an uncontrolled environment. This equipment should be installed and operated with minimum distance 20cm between the radiator and your body.