

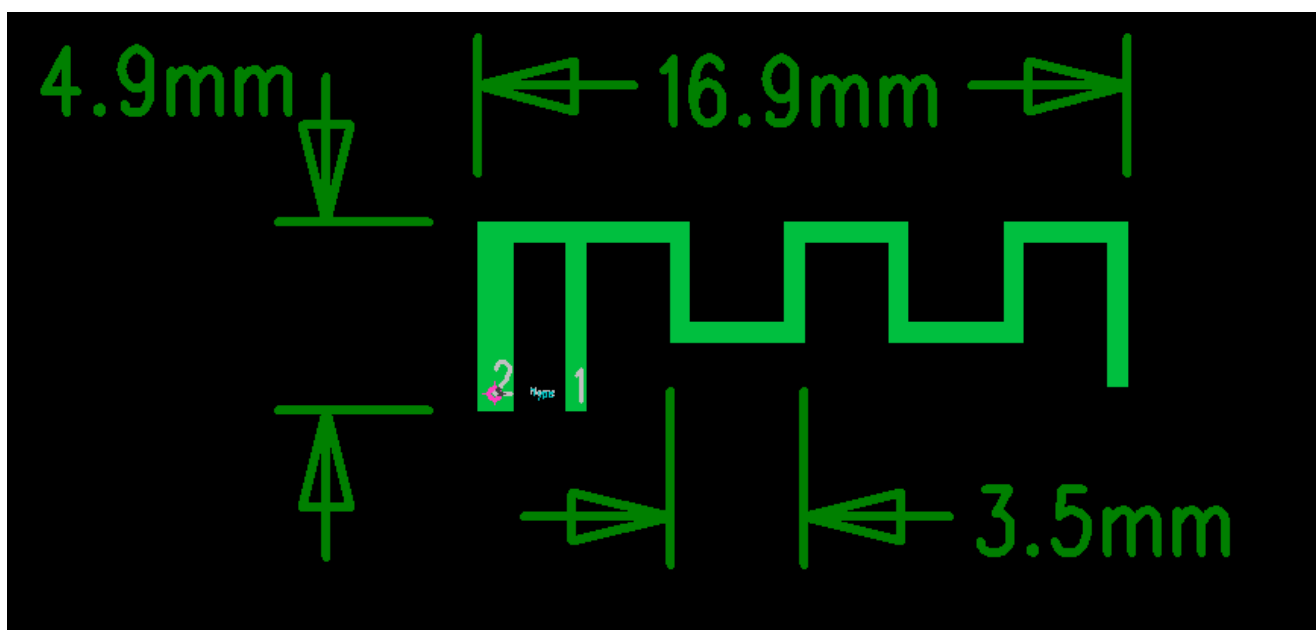
# 天线性能测试规格书

## Applications

※Bluetooth Home RF

※ISM band 2.4GHz applications

### 1. Dimensions



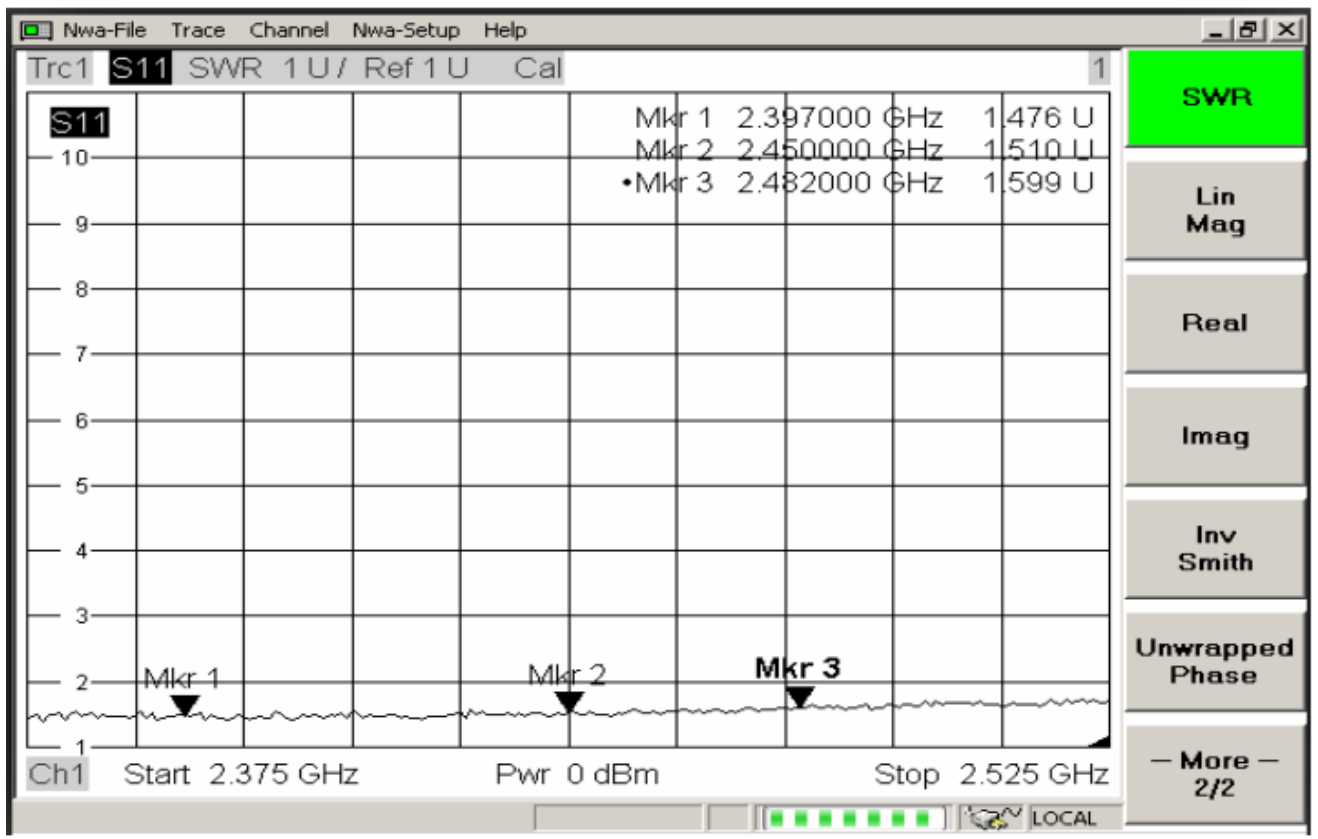
### 2. Specifications

number	Item	Specifications
1	Working Central Frequency	2441 MHz
2	Band Width	(2402-2480)MHz
3	Gain	3dBi
4	VSWR	$\leq 2.0$
5	Antenna type	PCB antenna
6	Azimuth Beam width	Omni - directional
7	Impedance	50 欧姆
8	Modulation mode	GFSK

### 3. 仪器测试、软件仿真参数

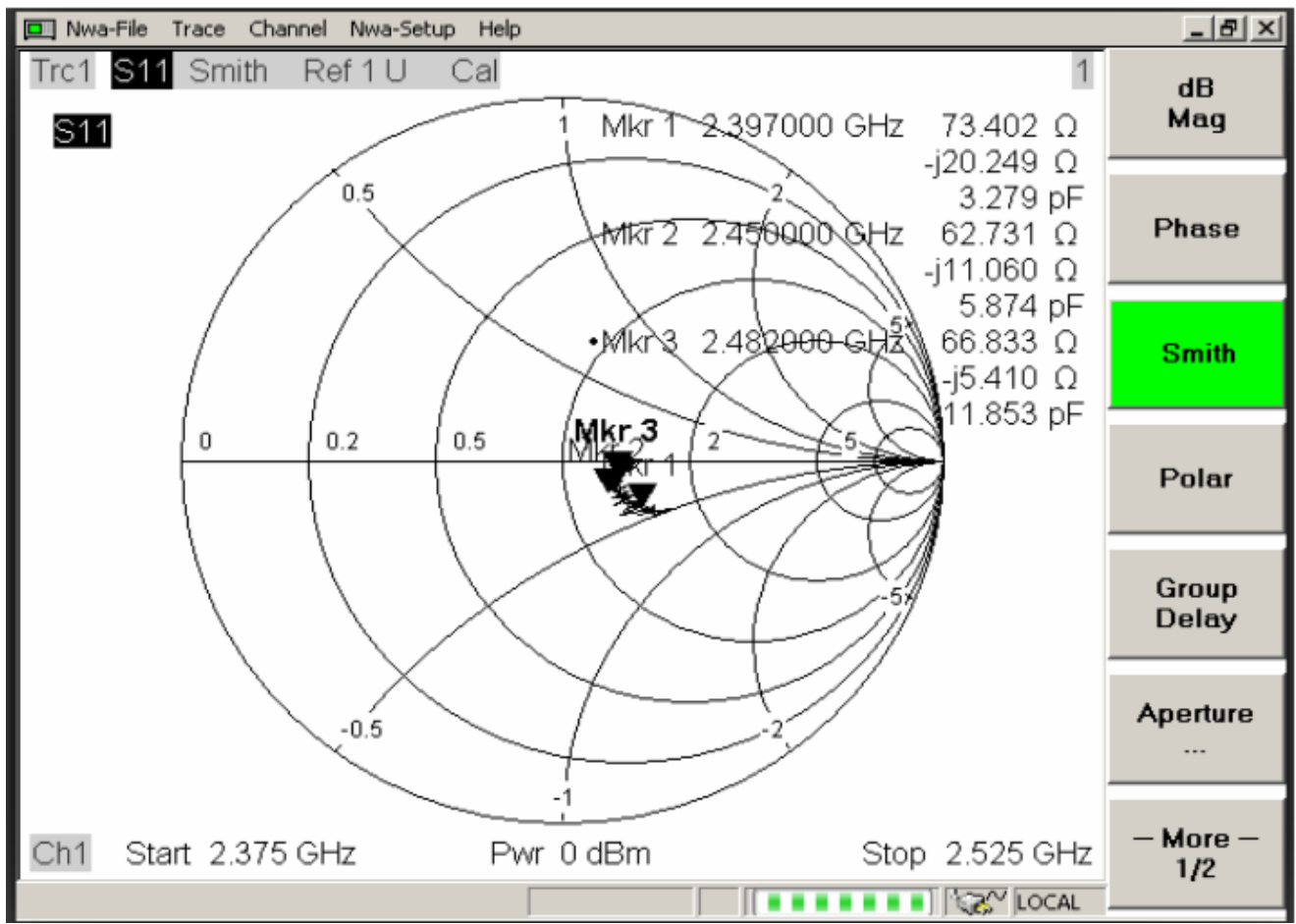
#### ① VSWR

Mkr1: 2397MHz 1.47    Mkr2: 2450MHz 1.51    Mkr3: 2482 MHz 1.59



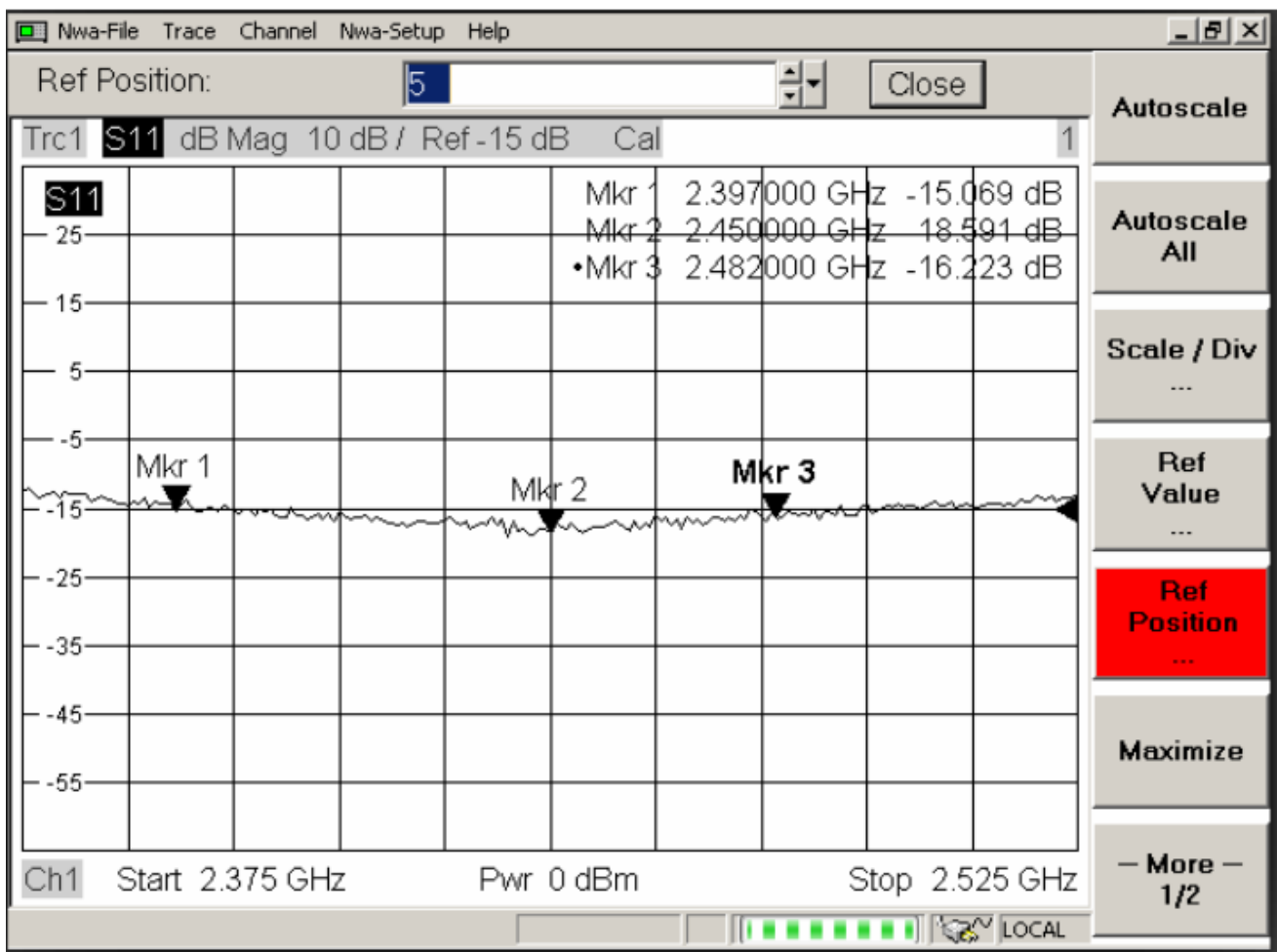
## ②Smith Char

Mkr1: 2397MHz 73.4      Mkr2: 2450MHz 62.7      Mkr3: 2482MHz 66.8



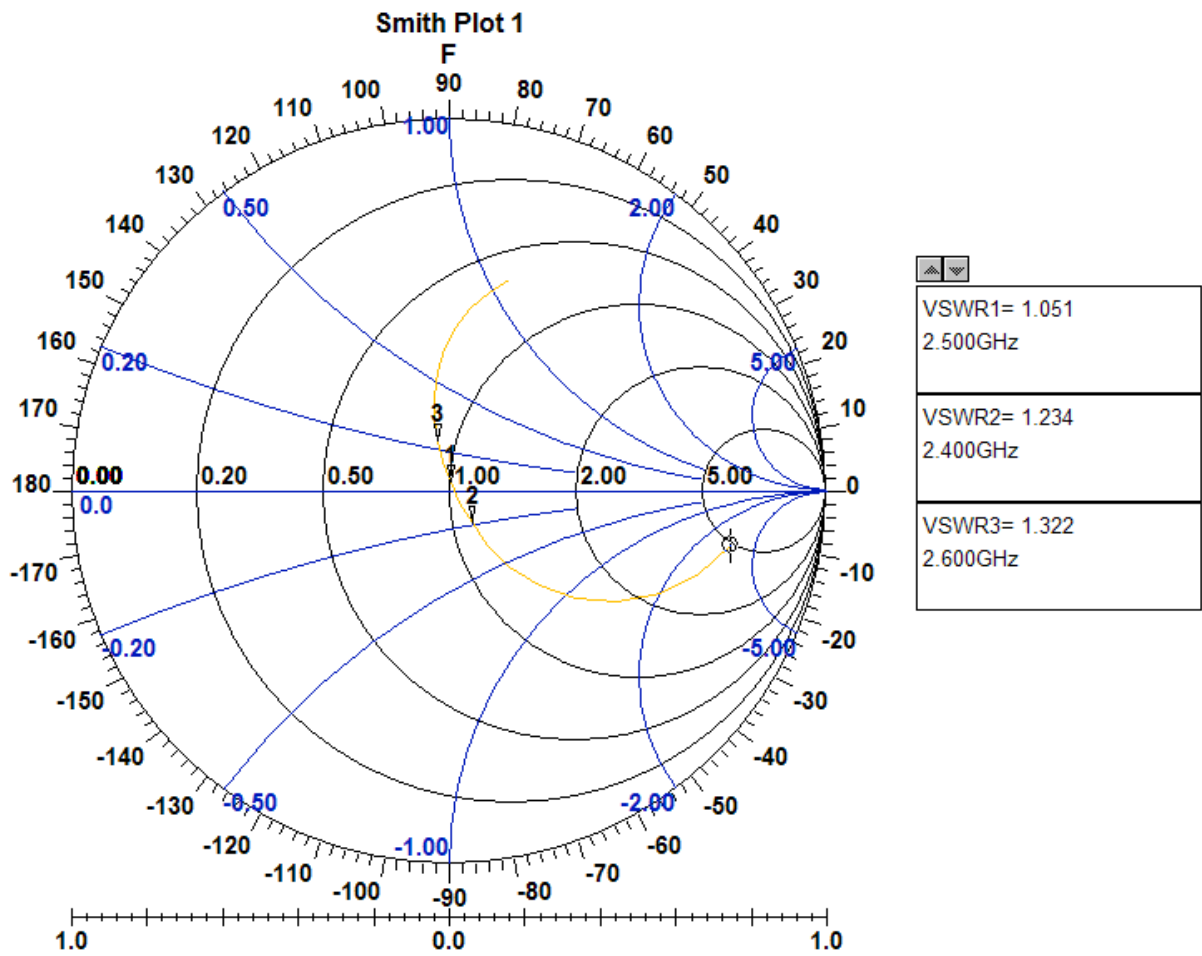
### ③Return Loss

Mkr1: 2397MHz -15    Mkr2: 2450MHz -18    Mkr3: 2482 MHz -16



#### ④Smith Char 仿真

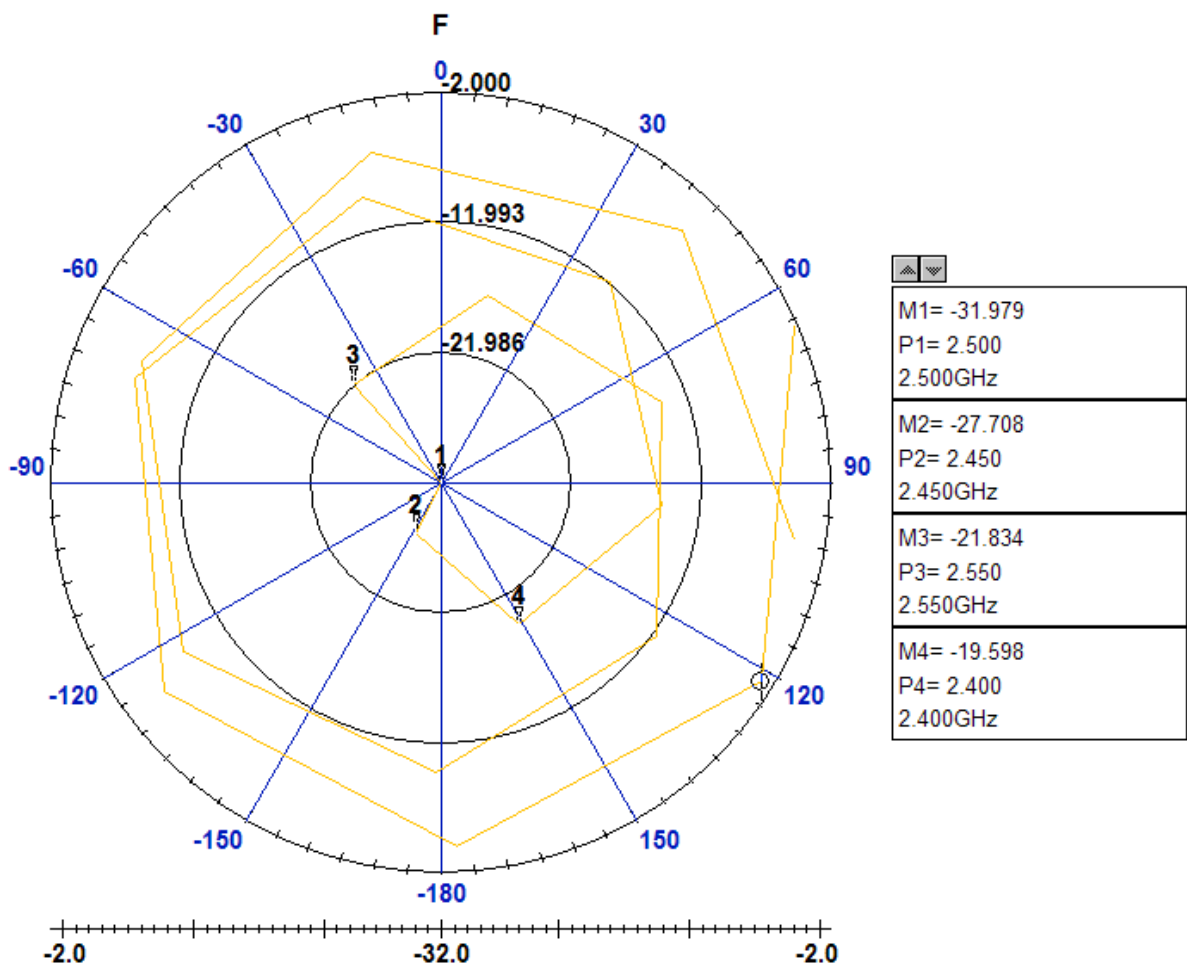
Mkr1: 2400MHz 1.234      Mkr2: 2500MHz 1.051      Mkr3: 2600MHz 1.322



### ⑤Return Loss 仿真

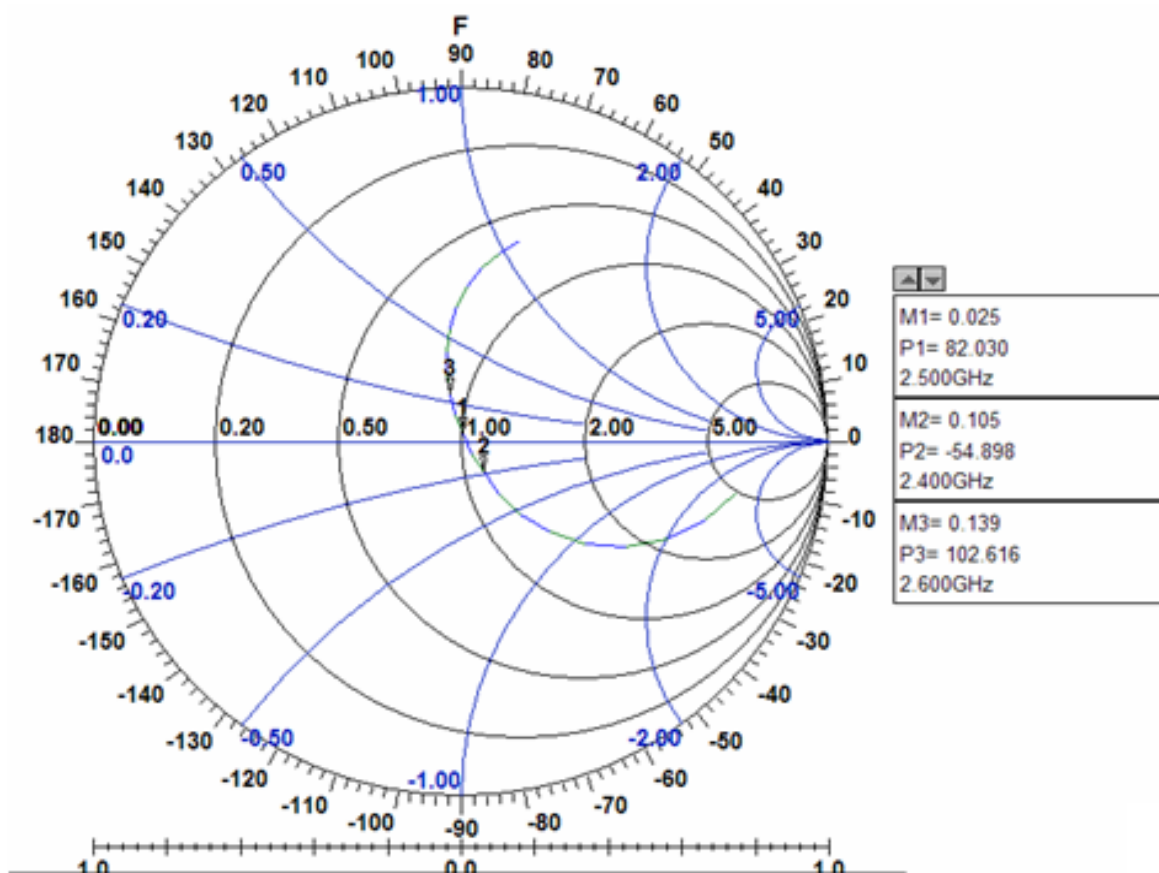
Mkr1: 2400MHz -19.59    Mkr2: 2450MHz -27.70    Mkr3: 2500MHz -31.97

Mkr4: 2550MHz -21.83



### ⑥Phase 仿真

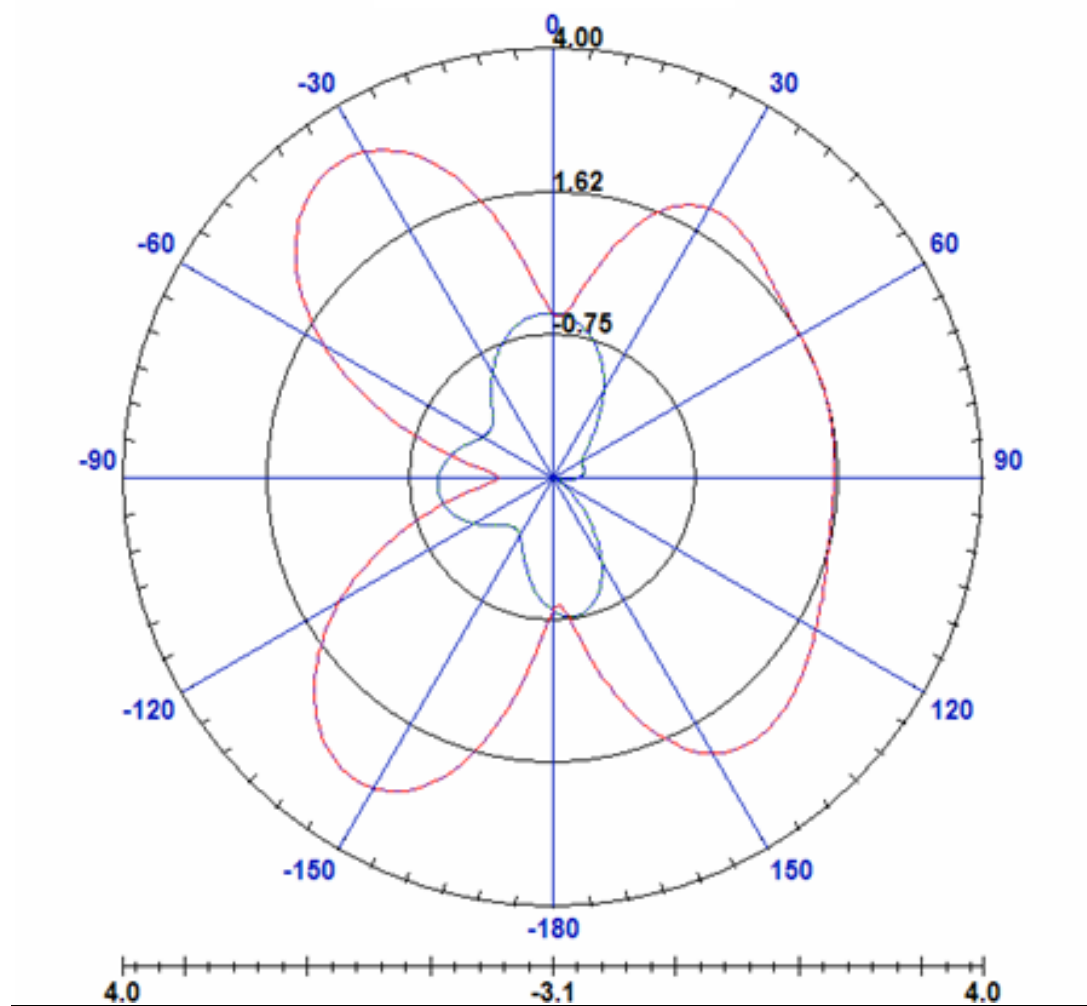
Mkr1: 2400MHz -54.89    Mkr2: 2500MHz -82.03    Mkr3: 2600MHz -102.6



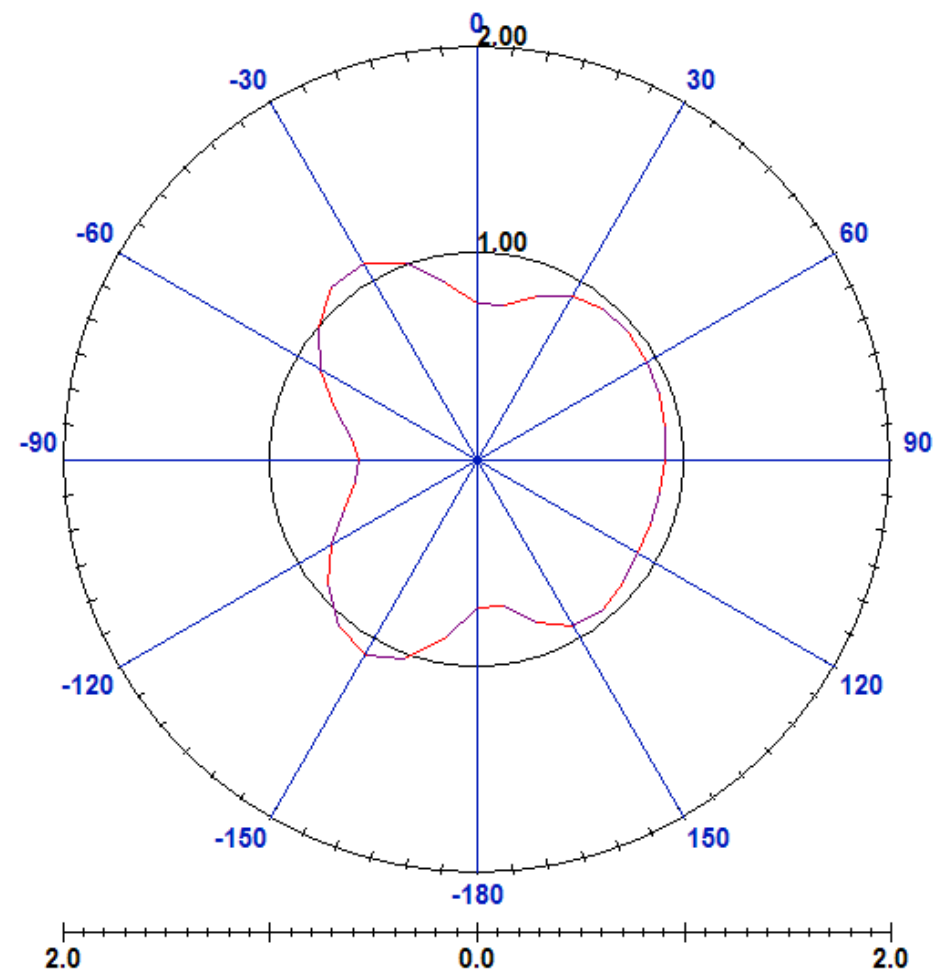


## 4. Radiation Patterns

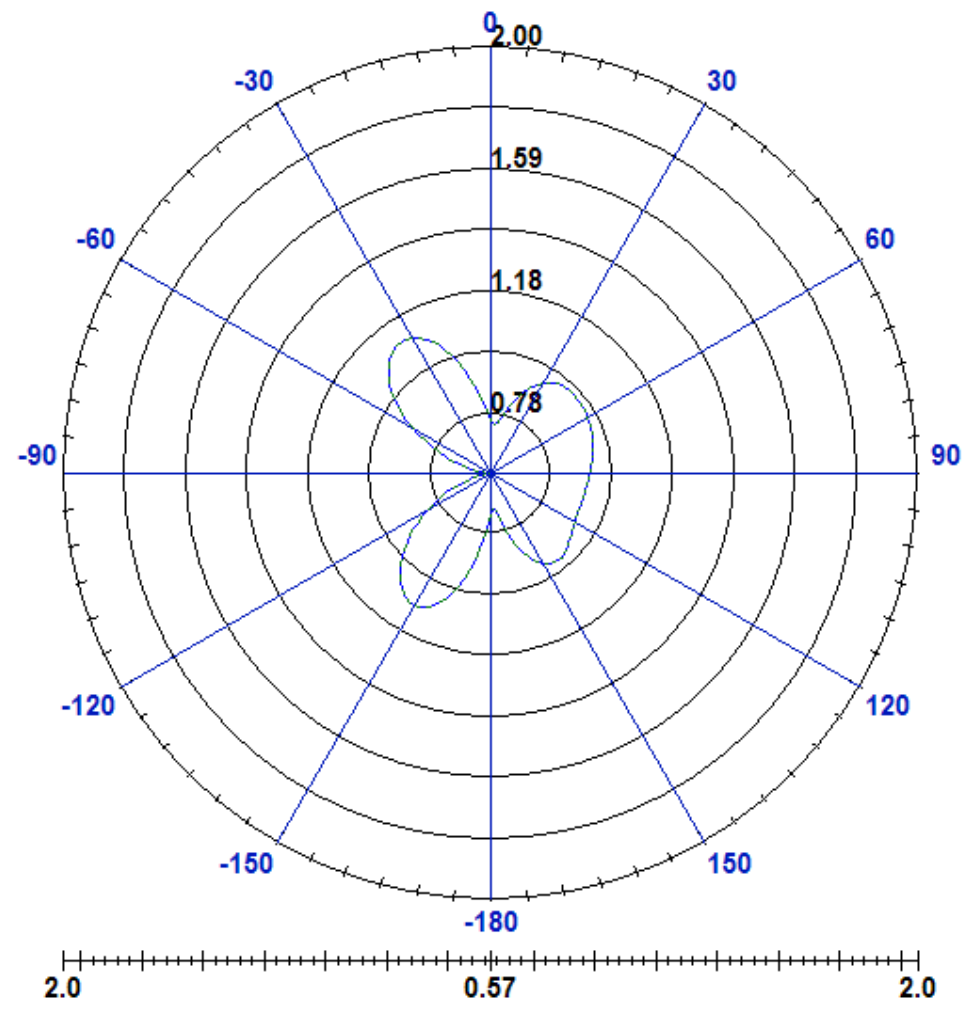
XY-plane



XZ-plane



YZ-plane



### 3D 辐射场型图

