

SPOTLED Manual

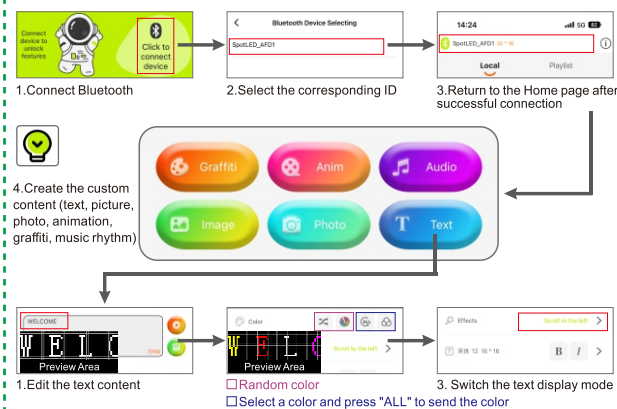
App download

Please search "**SPOTLED**" in App Store or Google Play or scan the QR code below to download the application



How to use the product

- 1)When the product is turned on, the Bluetooth ID (such as: **AFD1**) is displayed
- 2)Open the APP **SPOTLED** to connect the device, you can identify the model through the **Bluetooth ID**
- 3)Bluetooth is a 1-to-1 product, if you need to connect it, other models need to be disconnected and then connected



Language settings

Check update 1.9.4 >

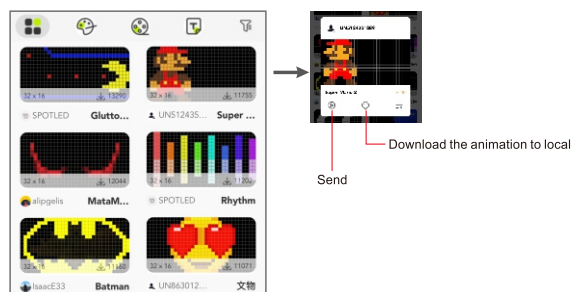
System Support:

English, German, Spanish, Chinese, Japanese, French, Russian, Thai, etc...

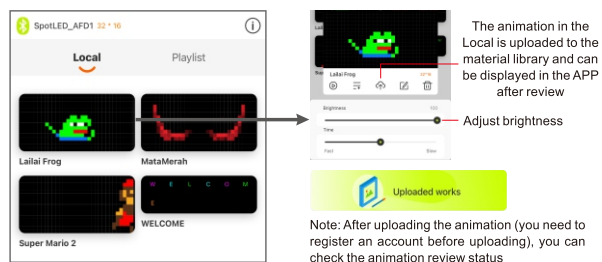
Language >

Animation Library

1. Open View the animation material



2. View/ Edit the text and the animated images in the Local



FCC Information and Copyright

This equipment has been tested and found to comply with the limits for a Class B digital device, pursuant to part 15 of the FCC Rules.

These limits are designed to provide reasonable protection against harmful interference in a residential installation. This equipment generates,

uses and can radiate radio frequency energy and, if not installed and used in accordance with the instructions, may cause harmful interference

to radio communications. However, there is no guarantee that interference will not occur in a particular installation. If this equipment does

cause harmful interference to radio or television reception, which can be determined by turning the equipment off and on, the user is

encouraged to try to correct the interference by one or more of the following measures:

- Reorient or relocate the receiving antenna.
- Increase the separation between the equipment and receiver.
- Connect the equipment into an outlet on a circuit different from that to which the receiver is connected.
- Consult the dealer or an experienced radio/TV technician for help.

15.19 Labelling requirements.

This device complies with part 15 of the FCC Rules. Operation is subject to the following two conditions:

- (1) This device may not cause harmful interference, and
- (2) this device must accept any interference received, including interference that may cause undesired operation.

changes or modifications not expressly approved by the party responsible for compliance could void the user's authority to operate the equipment.

FCC RF warning statement: the device has been evaluated to meet general RF exposure requirement , The device can be used in portable exposure condition without restriction.