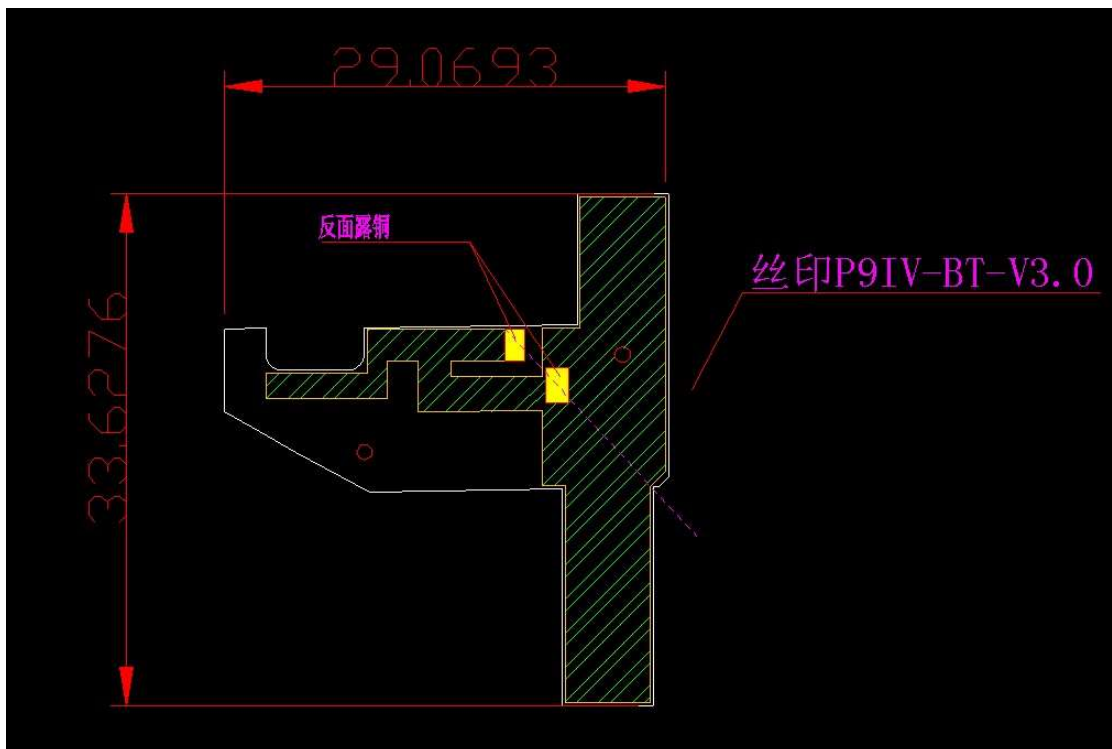


1. Antenna Description

| | | |
|-------------------|--------------|------------------------------|
| Antenna | | WiFi/BT |
| Antenna Plate | | Omni-directional |
| Market Name | | |
| Antenna Max. Gain | 2402~2482MHz | 1.75dBi |
| | 5170~5835MHz | 1.68dBi |
| Frequency Range | | 2402~2482MHz 5170~5835MHz |
| Connect Type | | Coaxial-Cable |
| Antenna Type | | FPC antenna |

2. Picture of antenna

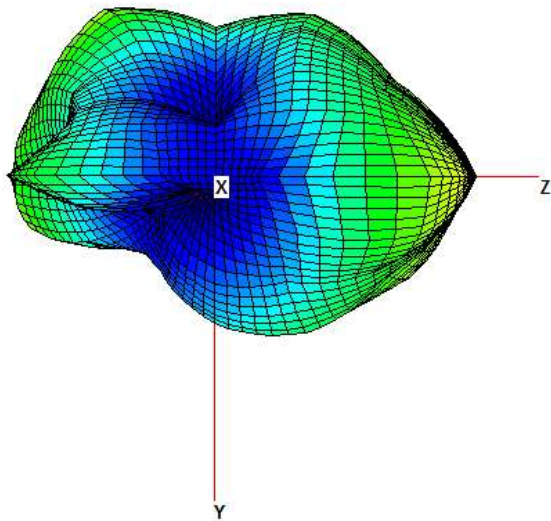
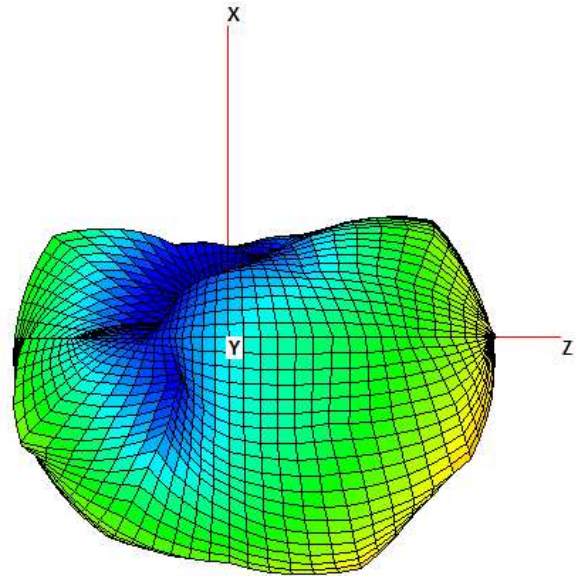
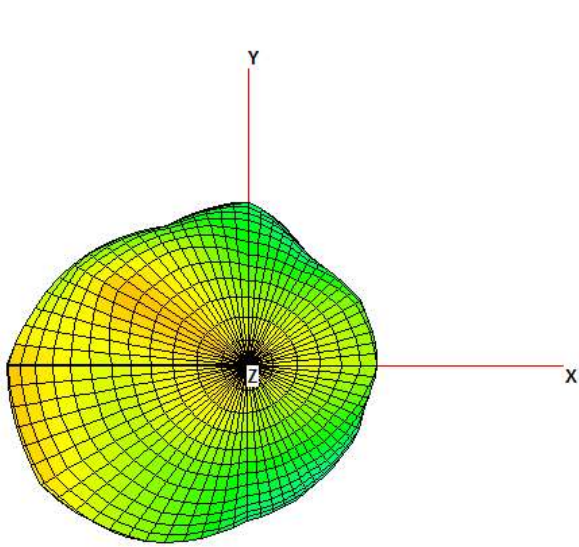
Size: 33.6mm * 29.1mm



3. Antenna Radiation Pattern

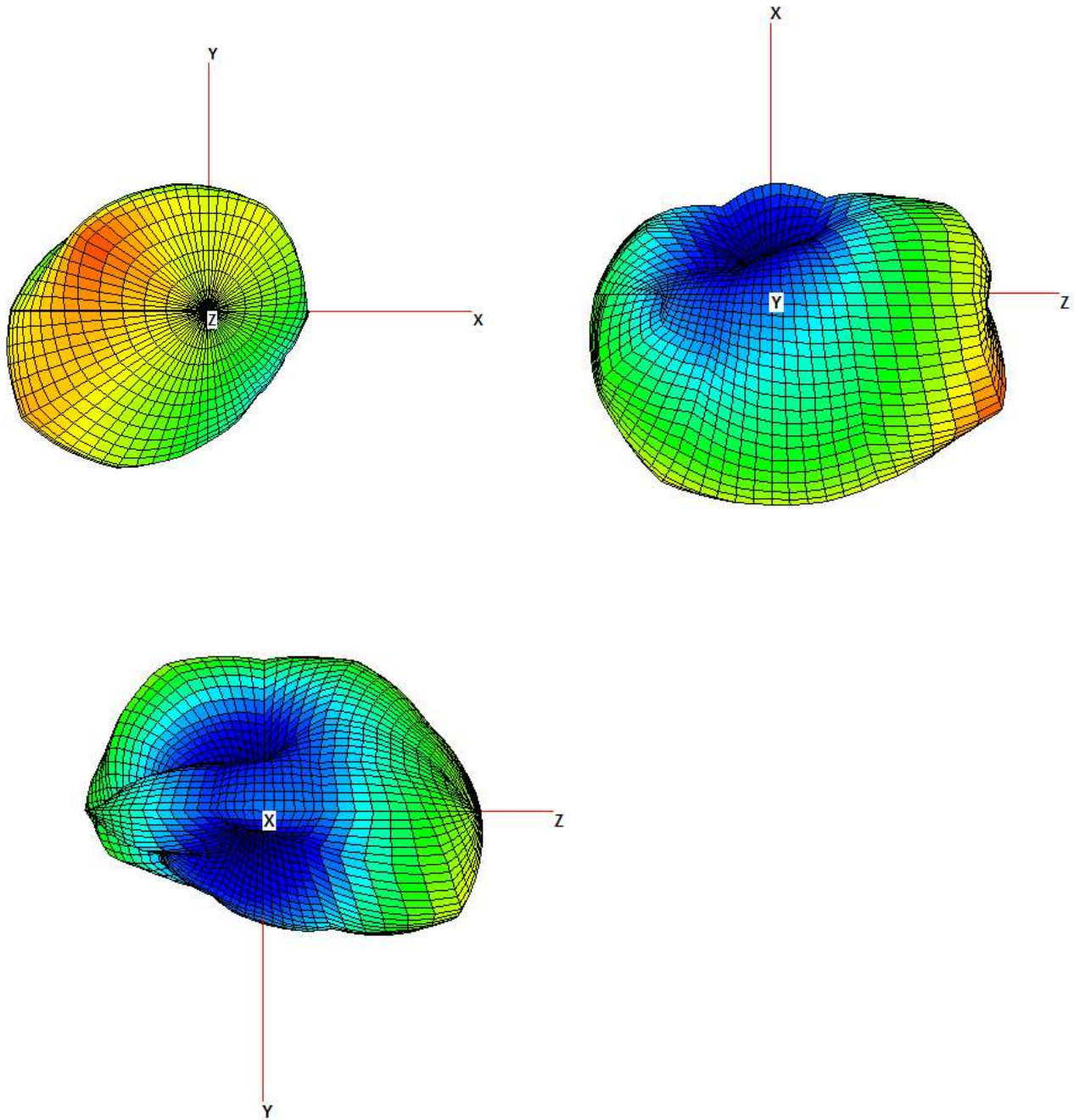
@2402MHz

| Frequency | Peak Gain |
|-----------|-----------|
| 2402MHz | 1.74dBi |



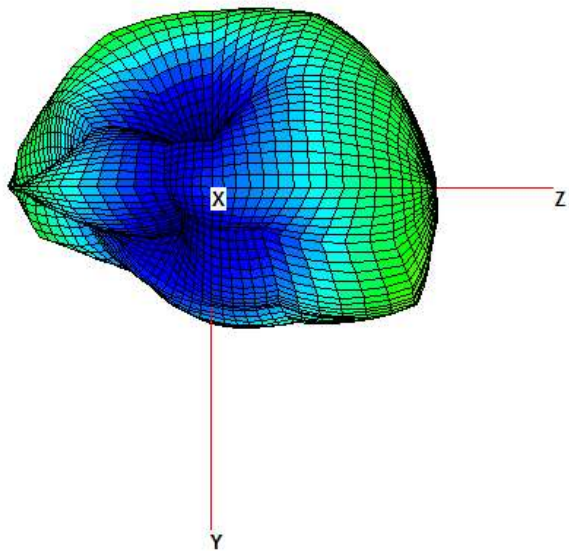
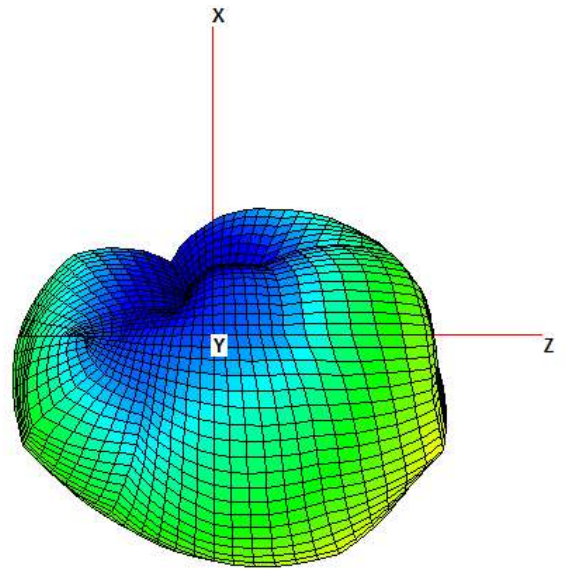
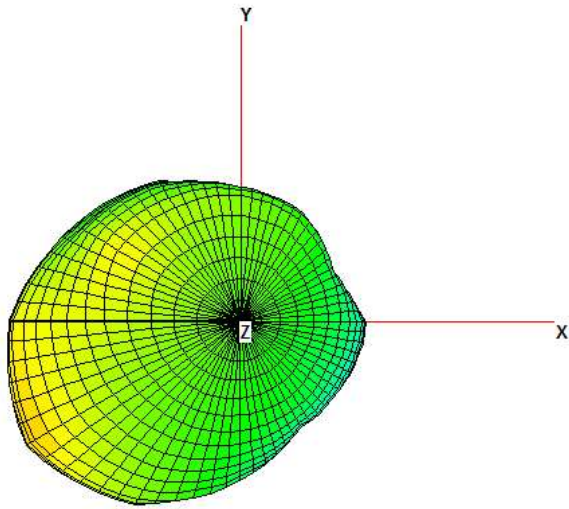
@2442MHz

| Frequency | Peak Gain |
|-----------|-----------|
| 2442MHz | 1.62dBi |



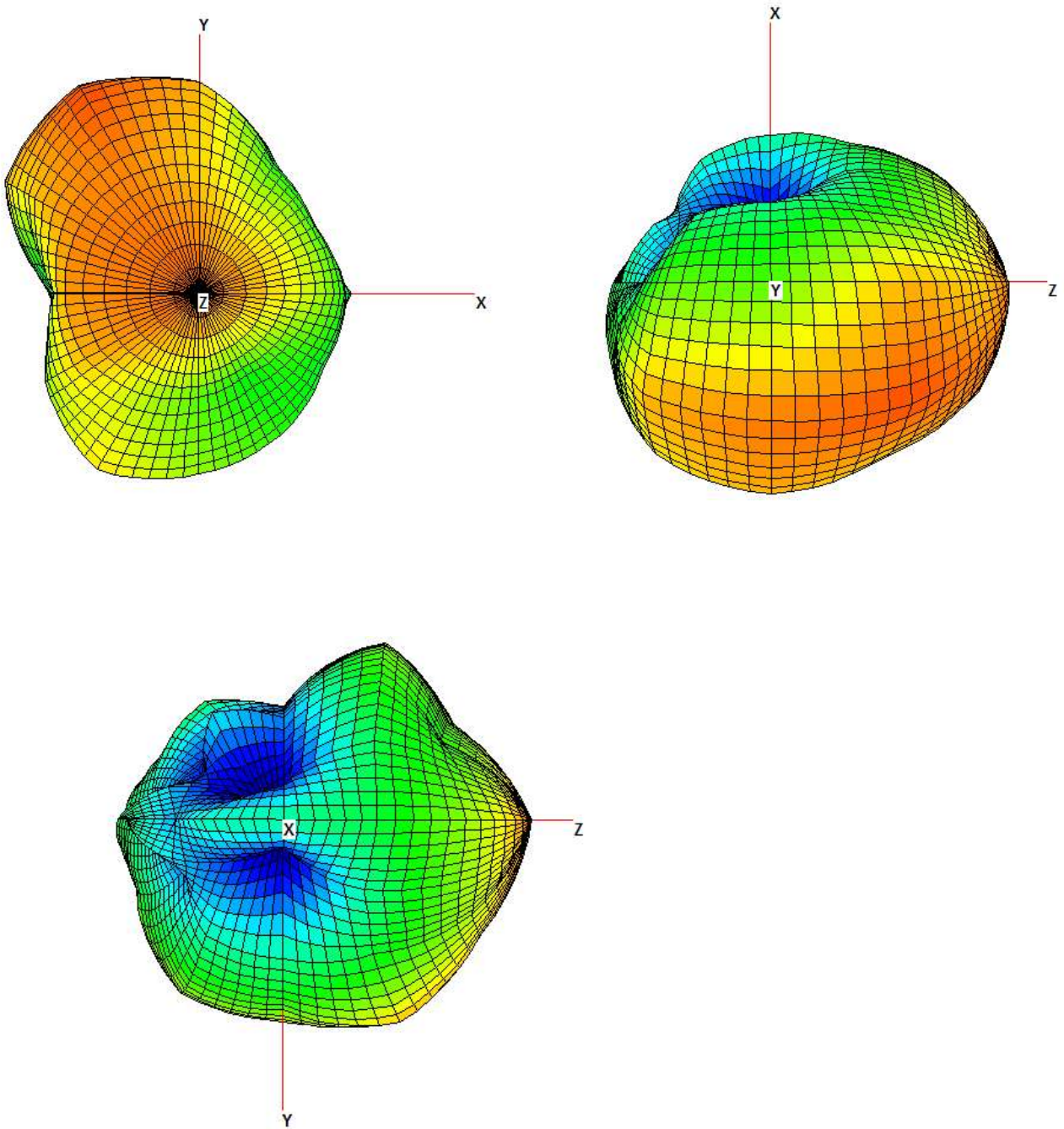
@2482MHz

| Frequency | Peak Gain |
|-----------|-----------|
| 2482MHz | 0.79dBi |



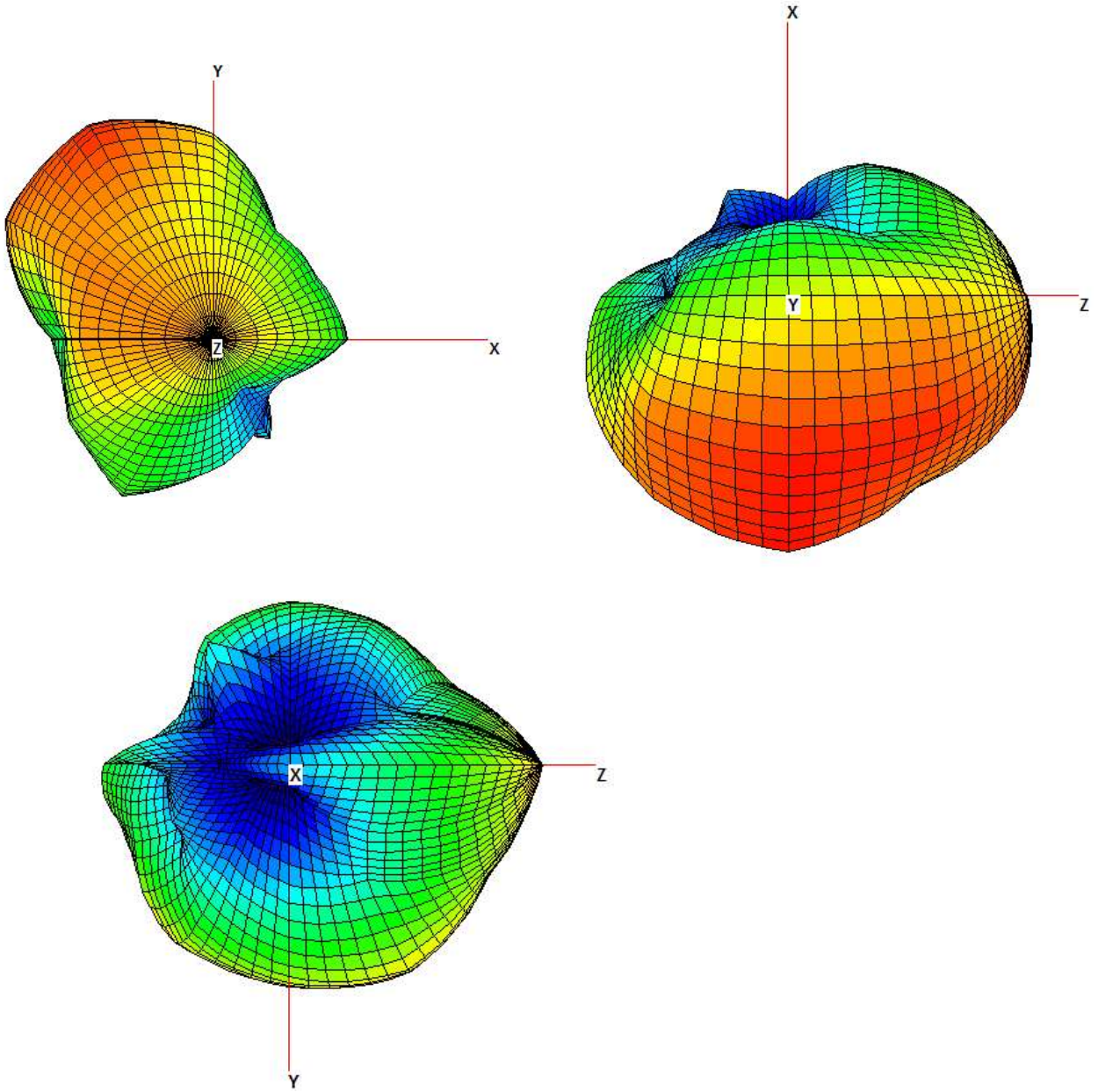
@5170MHz

| Frequency | Peak Gain |
|-----------|-----------|
| 5170MHz | 0.14dBi |



@5500MHz

| Frequency | Peak Gain |
|-----------|-----------|
| 5500MHz | 1.38dBi |



@5835MHz

| Frequency | Peak Gain |
|-----------|-----------|
| 5835MHz | 1.63dBi |

