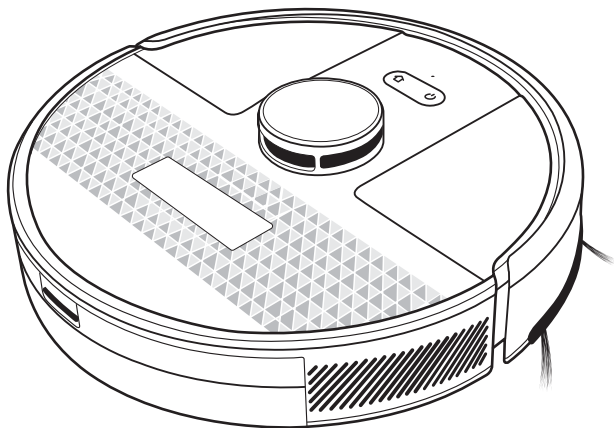


Robot Vacuum Cleaner Instruction Manual

Before using this product, Please carefully read this manual and keep it properly



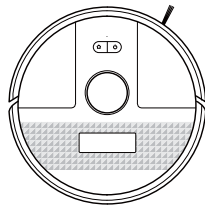
SL68

Contents

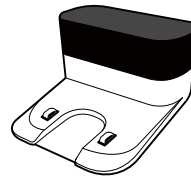
About Robot	01
Installation	05
APP Connection.....	09
Use Instructions	12
Routine Maintenance	16
Basic Parameters	20
Common Problems	21
Troubleshooting	22
Safety Information	24

About Robot

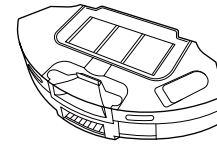
What's in the Box



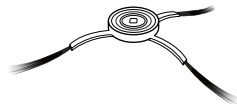
Robot Vacuum Cleaner



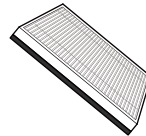
Charging Base



2in1 Dustbin & water tank



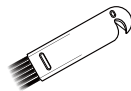
Side Brush



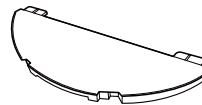
High-efficiency filter + sponge



Power Adapter



Cleaning Brush



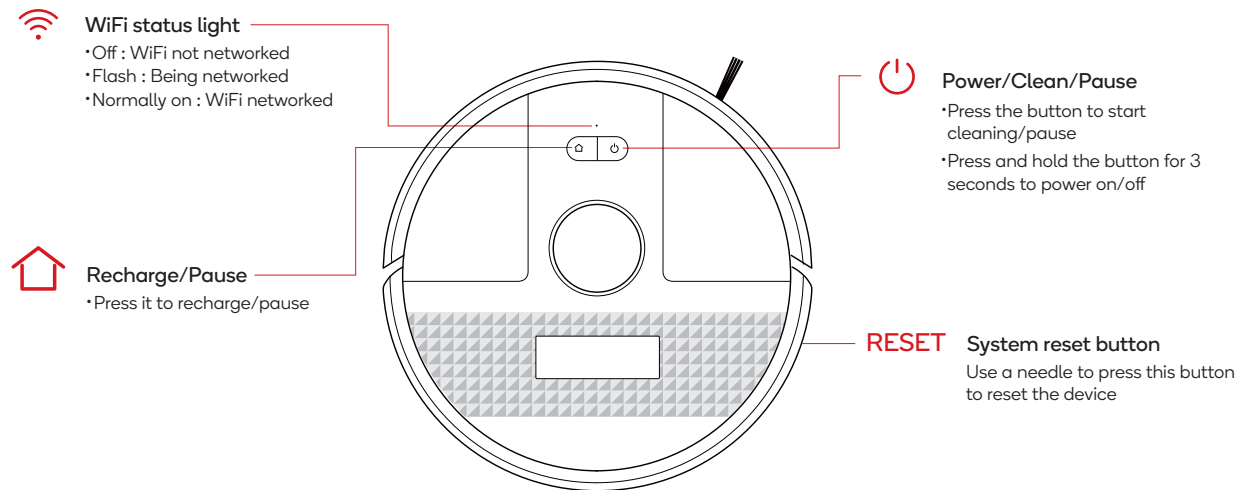
Mop holder



Mop

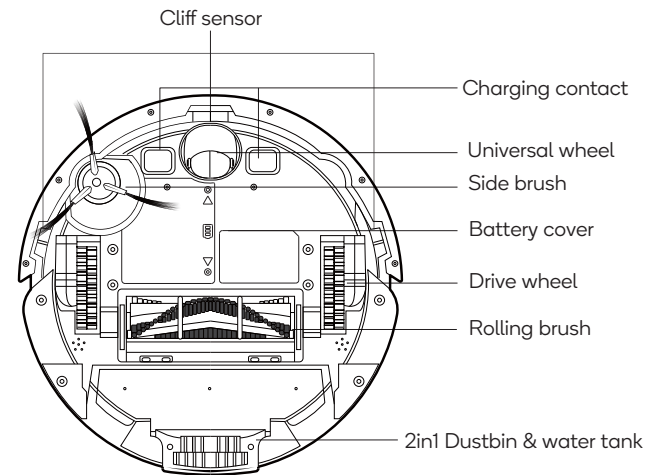
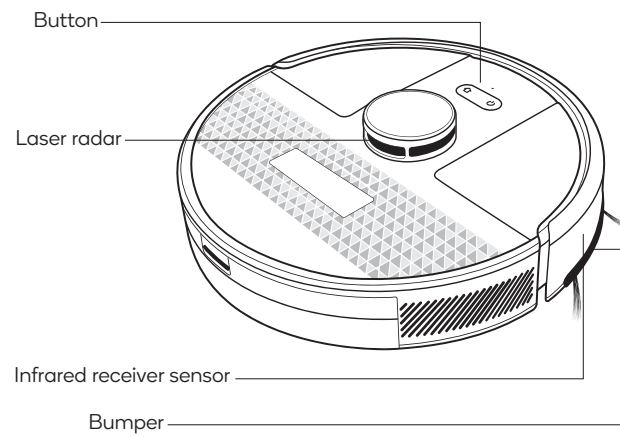
About Robot

Main unit



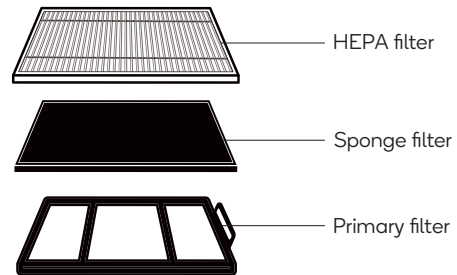
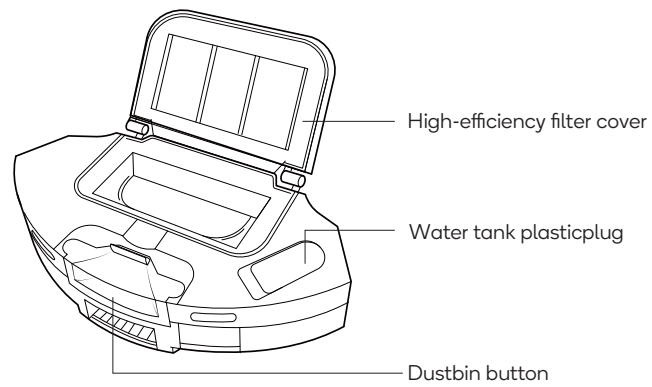
About Robot

Sensor and Structure

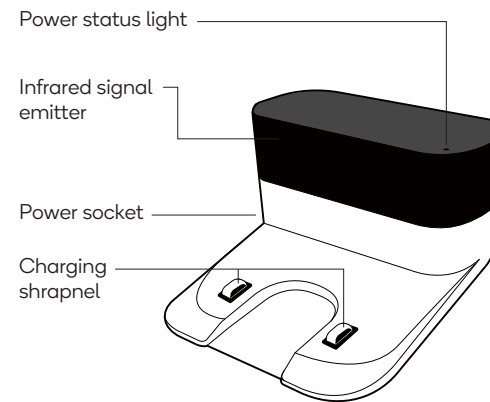


About Robot

2in1 Dustbin & water tank

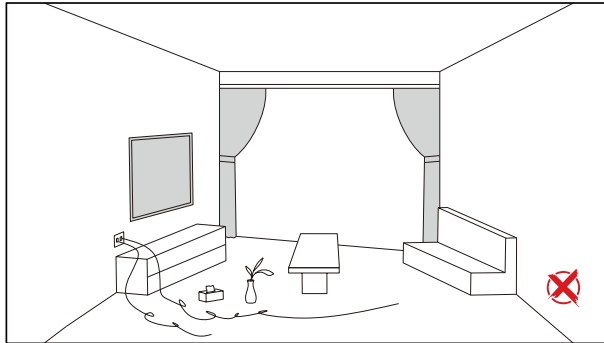


Charging Base

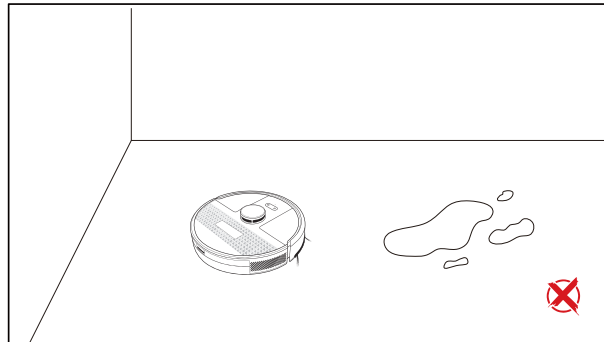
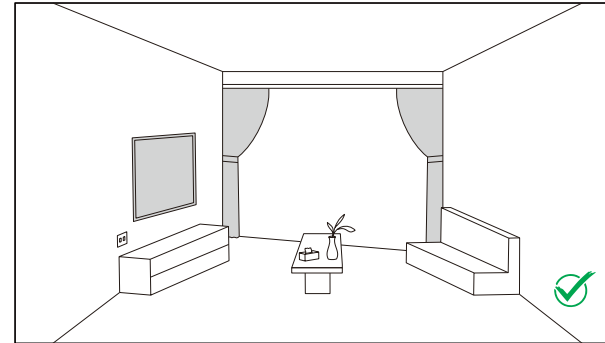


Installation

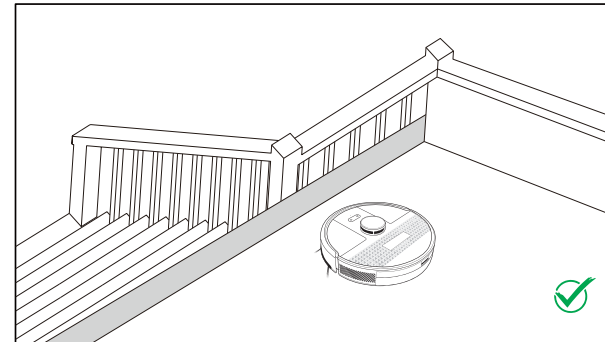
Precautions



Before startig the vacuum cleaner, clean up wires and sundries scattered on the ground, and remove easy-to-fall, fragile, valuable and potentially dangerous items. Avoid being entangled stuck, dragged or knocked down by the main unit; otherwise, personal injury or property damage may be caused.



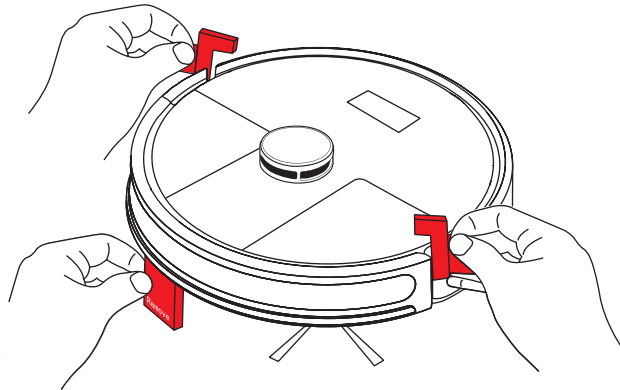
Don't use the robot to clean liquid



When used in a suspended circumstance, it shall be protected by rails to avoid accidental falling or pushing other articles from falling; otherwise, personal or property damage may be caused.

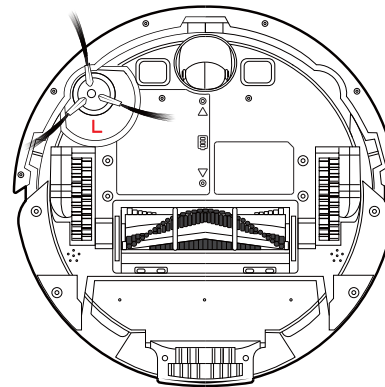
Installation

1.Remove the protection material from both sides of the robot



2.Install side brushes

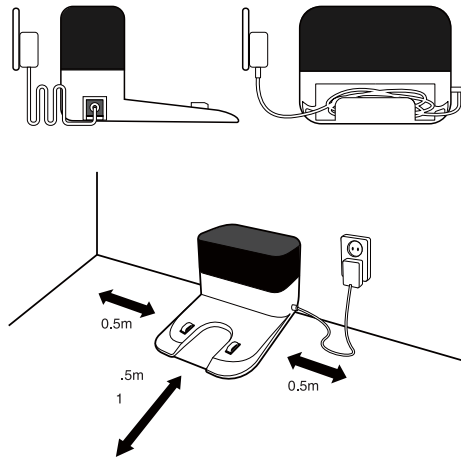
Put the left side brush L and right side brush R against the letters L on the bottom shell respectively, press down, you will hear a "click" sound, and it means that the side brushes are installed in place.



Installation

3. After connecting the power adapter to the power supply, connect it to the charging base and tidy up the redundant wires

4. Place the charging base on a flat ground against the wall and connect to the power supply




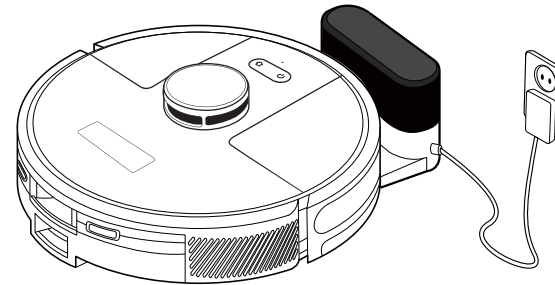
Note :
Ensure a space more than 0.5m from the left and right of the charging base and 1.5m in front of the charging base.
The power line perpendicular to the ground may be dragged by the main unit, and the charging base may be powered off.
The charging indicator light is normally on when the main unit is powered on.

5. Don't move the charging base at will; avoid direct sunlight on the charging base

Note :
The sunlight may interfere the recharging signal, which may cause the robot vacuum cleaner to fail to return to the charging base

6. Power on and charge

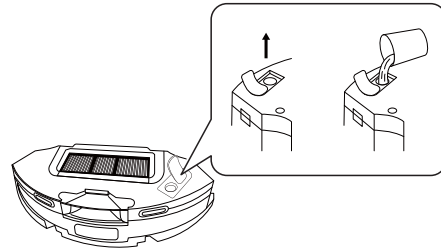
Press and hold the  button to power on. When the indicator light is normally on, put the main unit against the charging base for charging; when you hear the voice of "Start charging", it means that the robot is being charged successfully.



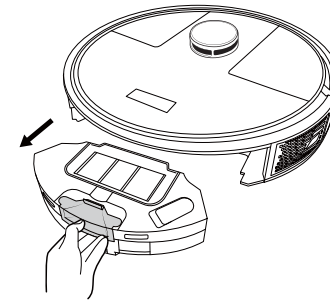
Note :
If the battery is at low level, the robot cannot be powered on. Please put the robot vacuum cleaner on the charging base and the device will be powered on automatically.

Installation[Mopping function]

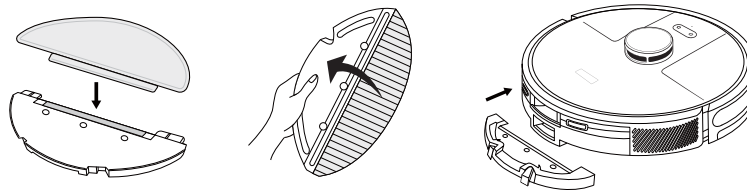
1.Open the water injection cover, add appropriate amount of water and then cover tightly, please do not add any de tergent.



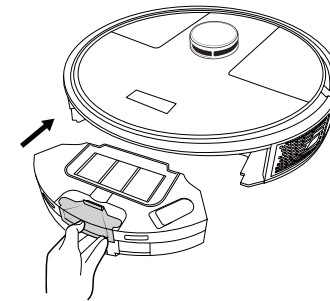
2.Put the water tank back into the robot



3.Install the mop on the mop support

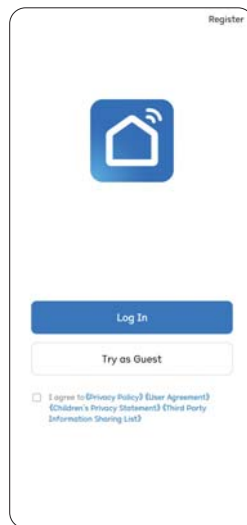


4.Install the mop support

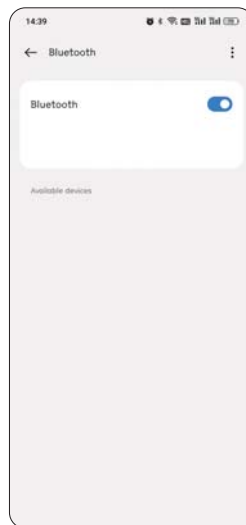


APP Connection

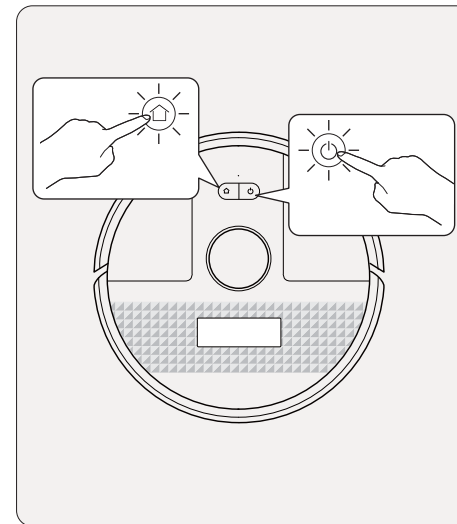
Preparation before connection





1. Search **Smart Life** in the mobile App store and download
2. Register & log into the APP



3. Bluetooth ON in the mobile

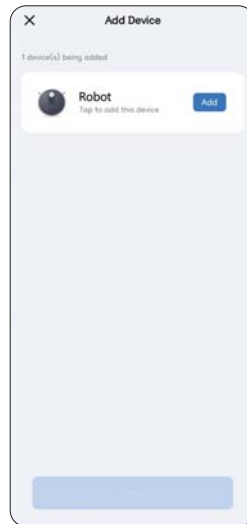


4. First start the robot vacuum cleaner, press and hold the  and  keys on the main unit at the same time for 3 seconds, and when you hear the voice prompt of "AP mode" and the WiFi indicator light flashes slowly, it means that the machine has entered the networking mode.

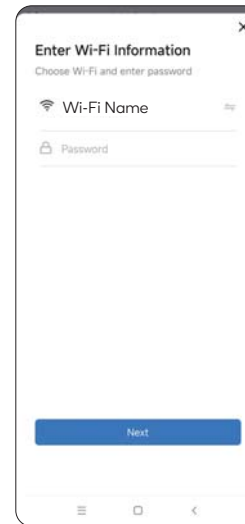
APP Connection



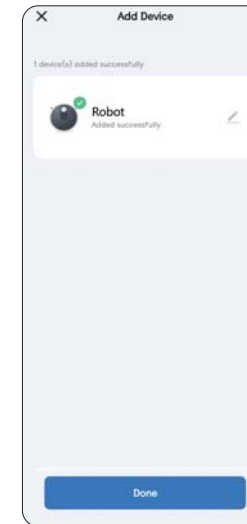
5. Click "Add a device" or "+" in the top right corner



6. Add already searched robot





7. Select 2.4GHz Wi-Fi network and enter the password



8. Click on **DONE** to complete the connection

Use Instructions

Power on/Power off

Press and hold the  button for 3 seconds, and if the indicator light is lit in, it means the machine is started up successfully
When the robot vacuum cleaner is in stand by state, press and hold the  button for 3 seconds, and if the indicator light goes out, it means the machine is shut down

Note : The robot vacuum cleaner cannot be shut down during charging

Clean / Pause


After startup, press the  key on the main unit or use the remote controller or mobile APP to start cleaning

Note :

- The robot vacuum cleaner cannot be used to clean liquid
- If the battery capacity is less than 15%, the robot cannot work; therefore, charge the machine before cleaning
- When the battery capacity is less than 15% in the cleaning process, the device will automatically return to the charging base for charging.
- Please tidy up the wires (including the power line of charging base) on the ground before cleaning; otherwise, the wires may be dragged when the machine is cleaning which may cause power failure to electric appliances and damage items or wires.

Charge

Automatic mode: After finishing cleaning, the robot vacuum cleaner will automatically return to the charging base for charging

Manual mode: In pause state, press the  button to start recharging or use the remote controller or mobile APP to start recharging.

Note : If the robot vacuum cleaner fails to find the charging base, it will automatically return to the starting point; please manually put back the main unit on the charging base for charging

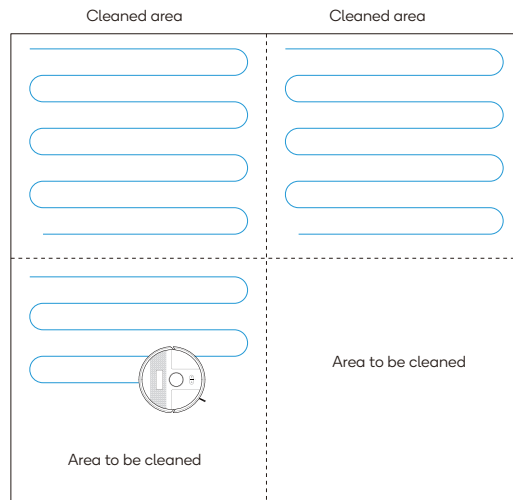
Suction selection

Use the mobile APP to select energy-saving, standard and powerful modes (the default is standard mode)

Use Instructions

Intelligent cleaning (default mode)

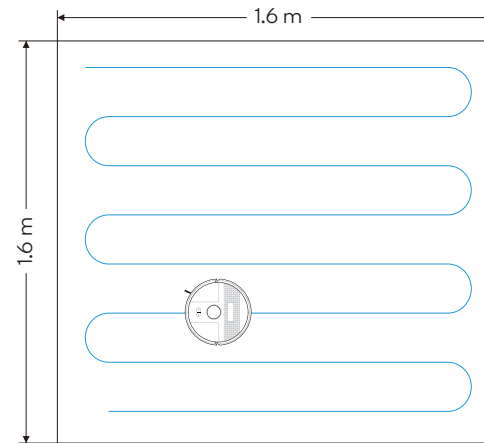
The robot vacuum cleaner scans the working environment, generates a map and intelligently divides the areas. It will complete cleaning of each area one by one by filling along the Z shape behind the wall. After finishing cleaning, the robot vacuum cleaner will return to the charging base for charging. In order to better build the map, the robot needs to start from the charging base at the first cleaning



Note :
Do not move the main unit randomly and frequently during operation, After moving, please put the main unit near the original place. When starting the machine again, the device will try to reposition its coordinates; after positioning successfully, it will continue to work according to the planned path; if positioning fails, the device will give up the previous task, and build a new map for cleaning, but it might fail to recharge.

Cleaning as required

Use the mobile APP to select the function of cleaning as required select a point on the map and the robot vacuum cleaner will move to the designated position and clean a 1.6m x 1.6m square area with itself as the center.

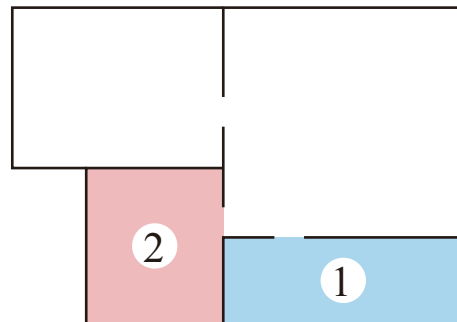


Note :
Before using this function, complete building of the map for the first cleaning in the mobile APP

Use Instructions

Cleaning of selected area

Use the mobile APP to select the function of cleaning of selected area, select the area to be cleaned on the map and the robot vacuum cleaner will clean in the selected area.

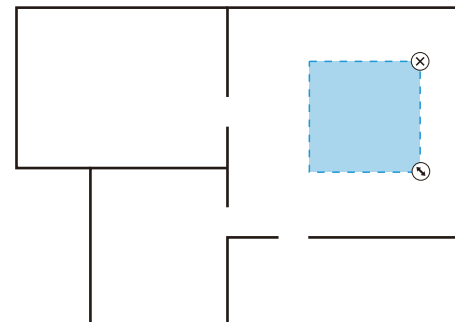


Note :

- Befor using this function, complete building of the map for the first cleaning in the moible APP
- The main unit might enter the unplanned area, so please clear the obstacles on the ground around the planned area, and this area cannot play a roke of safety isolation.

Cleaning of defined area

Use the mobile APP to select the function of cleaning of defined area, select the area to be cleaned on the map and the robot vacuum cleaner will clean in the defined area.



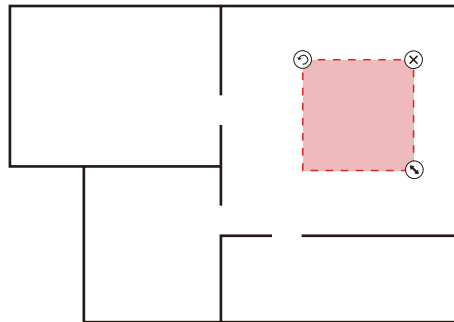
Note :

- Befor using this function, complete building of the map for the first cleaning in the moible APP
- The main unit might enter the unplanned area, so please clear the obstacles on the ground around the planned area, and this area cannot play a roke of safety isolation.

Use Instructions

Restricted area setting

Use the mobile APP to select the restricted area editing function, select and set the restricted area of cleaning on the map, and the machine will not enter the set area to clean.



Note :

- Befor using this function, complete building of the map for the first cleaning in the maible APP
- This function is only uesd to define the cleaning areas and cannot be used to block dangerous areas.
- When moving the robot vacuum cleaner or there are obvious changer in your home environment, the map might become ineffective and the restricted area might be lost.

Scheduled cleaning

After the setting of scheduled cleaning takes effect, themchine will automatically start to clean at the designated time, and automatically return to the charging base after finishing cleaning.

DND mode

The default starting time period is 22:00-06:00, Which can be modified or closed in your mobile APP.

During the DND time period, the robot vacuum cleaner will close the functions of automatic continuous cleaning, actively playing the voice, and timing.

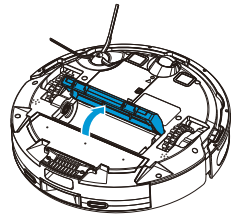
Other APP functions

Remote control	Real-time map updating
Look for robot	Language selection
Map management	Cleaning record viewing
Working mode selection	Consumables management
Partition area editing	Self-defining of cleaning sequence of areas
Area attribute customizing	

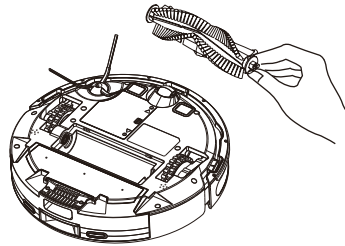
Routine Maintenance

Rolling brush (Recommended cleaning frequency: once a week)

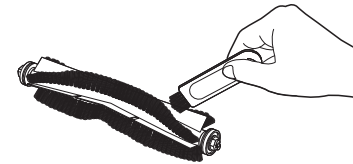
1. Turn over the machine, press the buckle on the rolling brush cover and take out the cover plate of rolling brush



2. Take out the rolling brush

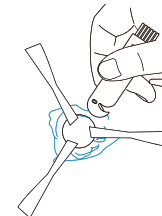
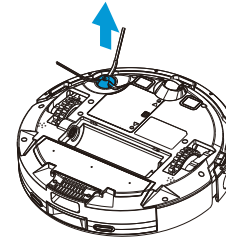


3. Use the clean brush to remove the dust in the cavity of main brush and rolling brush and clear the entanglements on the rolling brush



Side brush (Recommended cleaning frequency: once a week)

1. Turn over the machine upward and pull out the side brush vertically
2. Clear the entangled hairs and install back the side brush
3. Align the side left brush (L) and right side brush (R) with the letters L and R on the bottom shell respectively, and press them down to install back the side brush

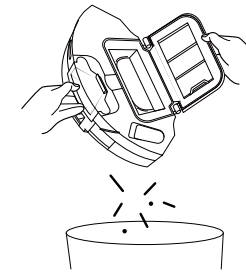
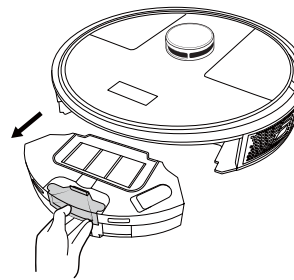


Note : It is recommended to replace the side brush every three months to ensure cleaning effect

Routine Maintenance

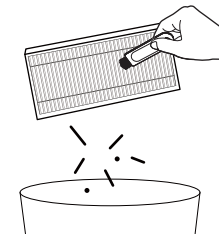
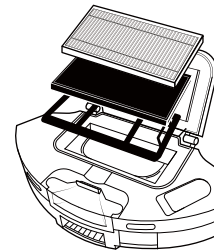
Dust bin and filter (Recommended cleaning frequency: after cleaning)

1. Press the dust bin button and draw out the dusty bin
2. Press the dust bin switch and open the dust bin to dump the rubbish



Wash the 2in1 Dustbin & water tank (Recommended cleaning frequency: after cleaning)

1. After use for a long time, take down the sponge and high-efficiency-filter
2. Flush the primary filter, dust bin and sponge under the water tap
the high-efficiency-filter cannot be washed with water
3. After washing, shake off the water drops, dry the filter and dust bin in the air, and they can be used only after they are completely dry

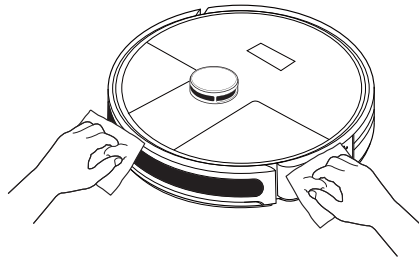


Note :

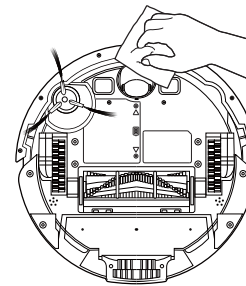
- Wash with clear water and do not add any detergent
- Do not use brush but use fingers to clean the filter
- The filter shall be dried in the air for at least 24 hours so that it can be dried thoroughly
- It is recommended to replace the filter every three months

Routine Maintenance

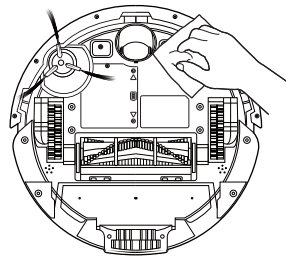
Clean the infrared obstacle avoidance sensor
(Recommended cleaning frequency: once a month)



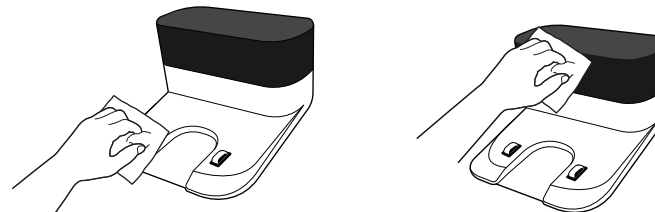
Clean the cliff sensor
(Recommended cleaning frequency: once a month)



Clean the charging contact
(Recommended cleaning frequency: once a month)



Clean the signal emission region on the charging base
(Recommended cleaning frequency: once a month)



Routine Maintenance

Battery

- Rechargeable high-performance lithium ion battery pack is built in the main unit. To maintain the battery performance, please maintain the main unit in charging state during daily use
- If the machine is not used for a long time, it shall be shut down for storage, and charged every three months to avoid damage to the battery due to over-discharge

Firmware upgrade

Enter the firmware upgrade function through the mobile APP. After new firmware is detected, upgrade according to the prompt guidance. The battery capacity shall not be less than 50% during firmware upgrade. It is recommended to place the device on the charging base during upgrade

Basic Parameters

Main unit	Parameter
Product model	SL68
Overall dimension	320x320x92.5mm
Battery	2600mAh Li-Battery
Rated voltage	14.4V
Rated power	42W
Charging time	300min
Dust bin capacity	230ml
Water tank capacity	270ml

Charging base	Parameter
Dimension	158x147x84mm
Rated input	19V 0.6A
Rated output	19V 0.6A

Common Problems

PROBLEM	SOLUTION
Failed to power on the machine	<ul style="list-style-type: none"> The battery power is insufficient. Please place the machine on the docking station, and align with the charging electrode. The machine will be automatically powered on. The ambient temperature is below 0°C or above 40°C. Please use the machine when the ambient temperature is 0°C to 40°C.
Failed to charge the machine	<ul style="list-style-type: none"> Move the machine away from the docking station, and check whether the indicator of the docking station is on. Make sure that both ends of the power adapter are properly connected. The docking station is not in proper contact with the machine. Please clean the docking station shrapnel and the charging contact on the machine, or push the side brush to one side.
Failed to return to the docking station	<ul style="list-style-type: none"> The machine is too far away from the docking station. Try to place the machine near the docking station.
Abnormal behavior	<ul style="list-style-type: none"> Power off the machine and then on again.
There is abnormal noise during cleaning.	<ul style="list-style-type: none"> The roller brush, side brushes, or wheels may be entangled with foreign objects. Please clean them after stopping the machine.
The cleaning performance is degraded, or ash is dropped.	<ul style="list-style-type: none"> The dust boblocked. Clean or replace the filter. The roller x is full. Clean the dust box. The filter is brush is entangled with foreign objects. Clean the roller brush.
The WiFi network cannot be connected.	<ul style="list-style-type: none"> The Wi-Fi signal is not good. Ensure that the machine is located in a place with good Wi-Fi signals. The Wi-Fi connection is abnormal. Reset the Wi-Fi settings, download the app of the latest version, and try to connect to the Wi-Fi network again. The password is incorrect. This machine supports only the 2.4 GHz band.
Scheduled cleaning cannot be carried out.	<ul style="list-style-type: none"> The power is insufficient. Scheduled cleaning will be started only when the remaining power is 15% or above.
Is any power consumed if the machine always stays at the docking station?	<ul style="list-style-type: none"> The power consumption is extremely low when the machine always stays at the docking station. This helps to keep the battery in the best performance.
Is it necessary to charge the battery for 16 hours when the machine is used for the first three times?	<ul style="list-style-type: none"> The lithium battery does not have a memory effect. It can be used instantly after it is fully charged. There is no need to wait.

Troubleshooting

ERROR PROMPT	SOLUTION
Error 1 : Insertte dustbin	Cleaning is triggered when the dust bin is taken out; please reinstall the dust bin
Error 2 : Put the machine on the floor bafore starting	You may pick up the machine; or the machine is suspended; plese move the machine to a flat groind and start it again
Error 3 : Please lay the machine flat on the ground and then start it	The machine tilts; please move the machine to a flat ground and then start it
Error 4 : Please check whether the front bumper is stuck	The edge or collision sensor is stuck; please push the bumper left to confirm that is is not stuck
Error 5 : Low battery; please charge	Put the main unit on the charging base for charging
Error 6 : The machine is trapped	Please move the machine to an open ground and then start it
Error 7 : Please check whether the wheel is stuck	The main wheel is struck or entangled; please check the main wheel and remove the foreign matters
Error 8 : Please check whether the rolling brush is stuck	The rolling brush is entangled or struck; please check the rolling brush and remove the foreign matters
Error 9 : Please check whether the side brush is stuck	The side brush is entangled or struck; please check the side brush and remove the foreign matters

Safety Information

Use Restrictions

- This product can only be used for floor cleaning at home. Please do not use it in outdoor (such as an open balcony), non-ground (such as a sofa), commercial or industrial environment.
- Do not use the machine in the suspended environments without protective fences (such as duplex floor, open balcony, and top of furniture).
- Do not use the machine in an environment where the temperature is higher than 40 °C or lower than 0 °C or there are liquid and viscous objects on the ground.
- Please hang up the ground wires at home before use to avoid dragging the wires when the main unit is running.
- Please put away the fragile articles and sundries (such as vases, please bags, etc.) on the ground; otherwise, the machine may be blocked or a slight collision may cause damage to valuables at home.
- Do not allow people (including children) with physical, mental or perceptual disabilities to use or operate this product.
- Do not allow children to use the machine as a toy. When the machine is working, please keep children and pets away from the machine.
- Keep the cleaning brush out of reach of children.
- Do not place any objects (including children and pets) on the stationary or moving machine.
- When the machine is working, keep the hair, fingers and other parts of human body or pet away from the dust suction inlet of the machine.
- Do not use the machine to clean burning objects such as burning cigarette butts.
- Do not use the machine to clean long-haired carpets. Some dark carpets might not be cleaned normally).
- Do not use the machine to vacuum hard or sharp objects, such as decoration waste, glass, nails, etc.
- Do not use the protective cover of the laser ranging sensor or bumper as a handle to carry the machine.
- Please clean or maintain the machine and charging base when the machine is shut down or powered off.
- Do not use a damp cloth or any liquid to wipe any part of the machine.
- Please follow the instructions in the manual when using the machine. Any loss and injury caused by improper use of the product shall be borne by the user.
- Do not use the mopping function on the carpet or the top furniture.
- Remove the water tank when charging the machine.

Safety Information

Battery and Charging

- Do not use any third-party batteries, charging bases or chargers.
- Do not disassemble, repair or modify the battery or charging base without permission.
- Do not place the charging base near heat sources such as heating radiators.
- Do not use a damp cloth or wet hands to wipe or clean the charging base shrapnel.
- Dispose of used batteries properly and send them to professional recycling agencies.
- If the power line is damaged or broken, stop using it immediately and buy a new one through official channels.
- When transporting the product, ensure that the machine is shut down, and it is recommended to use the original packaging box for packaging.
- If you do not use the machine for a long time, fully charge it, power it off and put it in a cool and dry place. The machine shall be charged at least once every three months to avoid damage to the battery due to over-discharge.

FCC STATEMENT

1.This device complies with Part 15 of the FCC Rules. Operation is subject to the following two conditions:

- ① This device may not cause harmful interference, and
- ② This device must accept any interference received, including interference that may cause undesired operation.

2.Changes or modifications not expressly approved by the party responsible for compliance could void the user's authority to operate the equipment.

NOTE: This equipment has been tested and found to comply with the limits for a Class B digital device, pursuant to Part 15 of the FCC Rules. These limits are designed to provide reasonable protection against harmful interference in a residential installation. This equipment generates uses and can radiate radio frequency energy and, if not installed and used in accordance with the instructions, may cause harmful interference to radio communications. However, there is no guarantee that interference will not occur in a particular installation. If this equipment does cause harmful interference to radio or television reception, which can be determined by turning the equipment off and on, the user is encouraged to try to

correct the interference by one or more of the following measures:

Reorient or relocate the receiving antenna.

In crease the separation between the equipment and receiver.

Connect the equipment into an outlet on a circuit different from that to which the receiver is connected.

Consult the dealer or an experienced radio/TV technician for help.

IC WARNING

- English:

This device contains licence-exempt transmitter(s)/receiver(s) that comply with Innovation, Science and Economic Development Canada's licence-exempt RSS(s). Operation is subject to the following two conditions:

- (1) This device may not cause interference; and
- (2) This device must accept any interference, including interference that may cause undesired operation of the device.

FCC / IC Radiation Exposure Statement

This equipment complies with FCC and IC radiation exposure limits set forth for an uncontrolled environment. This equipment should be installed and operated with minimum distance 20cm between the radiator & your body

- French:

Cet appareil contient des émetteurs / récepteurs exemptés de licence conformes aux RSS (RSS) d'Innovation, Sciences et Développement économique Canada. L'exploitation est autorisée aux deux conditions suivantes :

- (1) l'appareil ne doit pas produire de brouillage, et
- (2) l'utilisateur de l'appareil doit accepter tout brouillage radio électrique subi, même si le brouillage est susceptible d'en compromettre le fonctionnement."

FCC / IC Déclaration d'exposition aux rayonnements

Cet appareil est conforme à FCC et IC l'exposition aux rayonnements limites fixées pour un environnement non contrôlé. Cet appareil doit être installé et utilisé avec une distance minimale de 20 cm entre le radiateur et votre corps. Cet transmetteur ne doit pas être co-situé ou opérant en liaison avec toute autre antenne ou transmetteur.

WARNING

- 1.This appliance can be used by children aged from 8 years and above and persons with reduced physical, sensory or mental capabilities or lack of experience and knowledge if they have been given supervision or instruction concerning use of the appliance in a safe way and understand the hazards involved. Children shall not play with the appliance. Cleaning and user maintenance shall not be made by children without supervision.
- 2.For the purposes of recharging the battery, only use the detachable supply unit provided with this appliance.
- 3.This appliance contains batteries that are only replaceable by skilled persons.

WARNING

- 1.This appliance can be used by children aged from 8 years and above and persons with reduced physical, sensory or mental capabilities or lack of experience and knowledge if they have been given supervision or instruction concerning use of the appliance in a safe way and understand the hazards involved. Children shall not play with the appliance. Cleaning and user maintenance shall not be made by children without supervision.
- 2.For the purposes of recharging the battery, only use the detachable supply unit provided with this appliance.
- 3.This appliance contains batteries that are only replaceable by skilled persons.