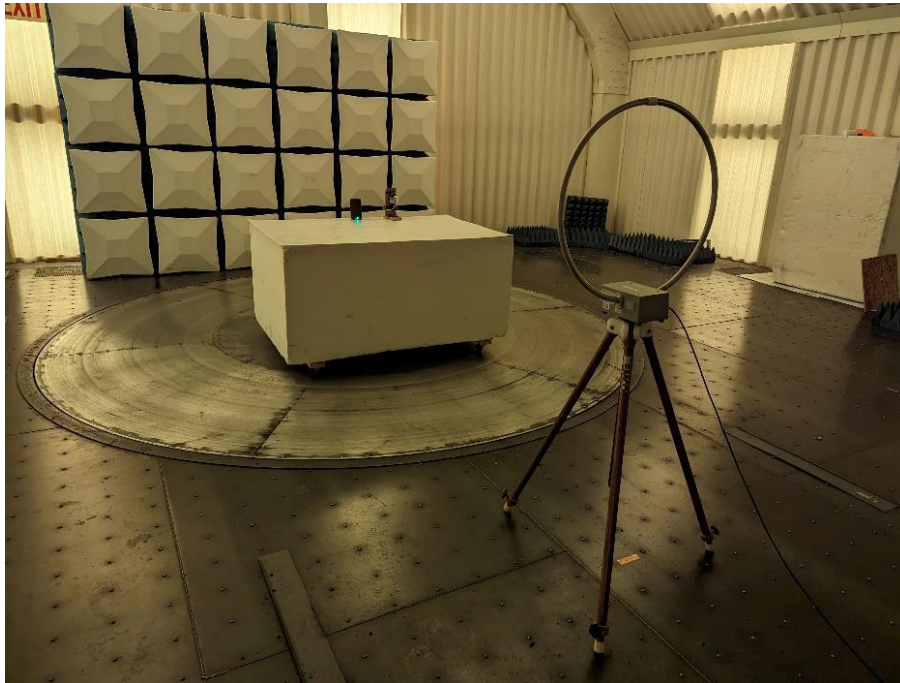


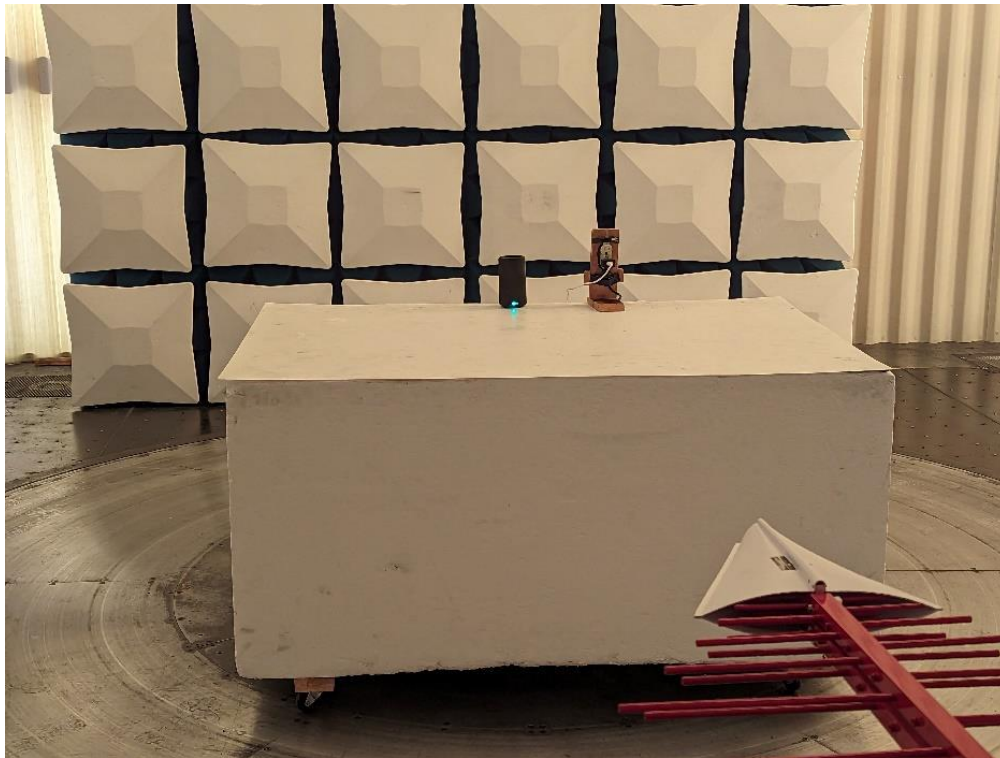
Test Set Up Photographs Radiated



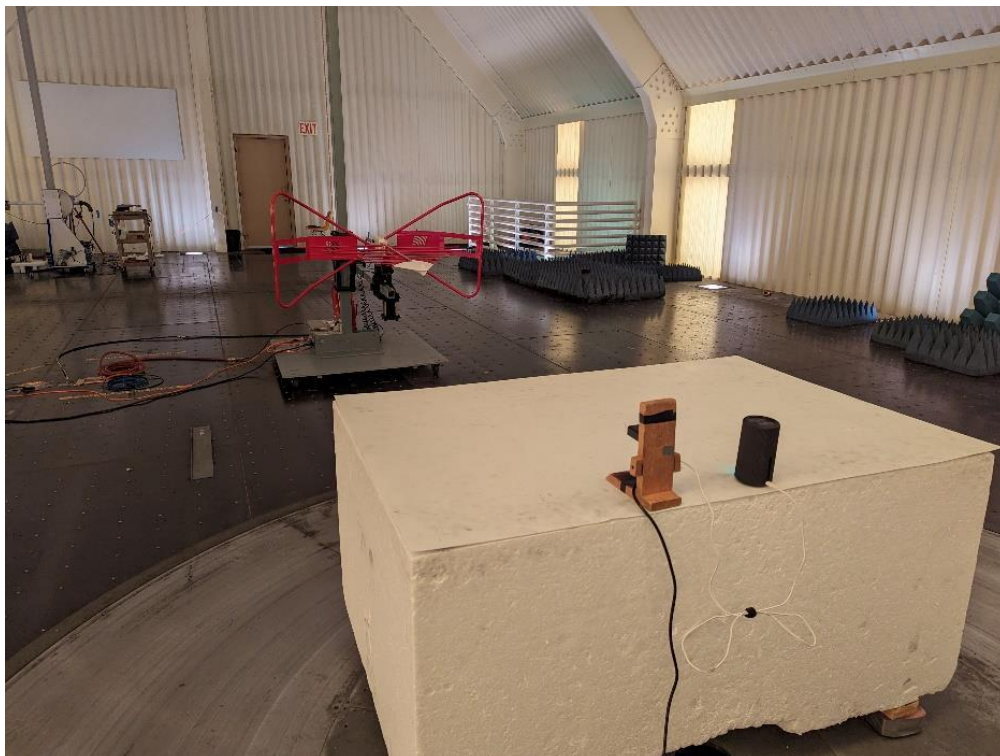
Photograph 1: Front View Radiated Emissions, Below 30 MHz Worst Case Configuration



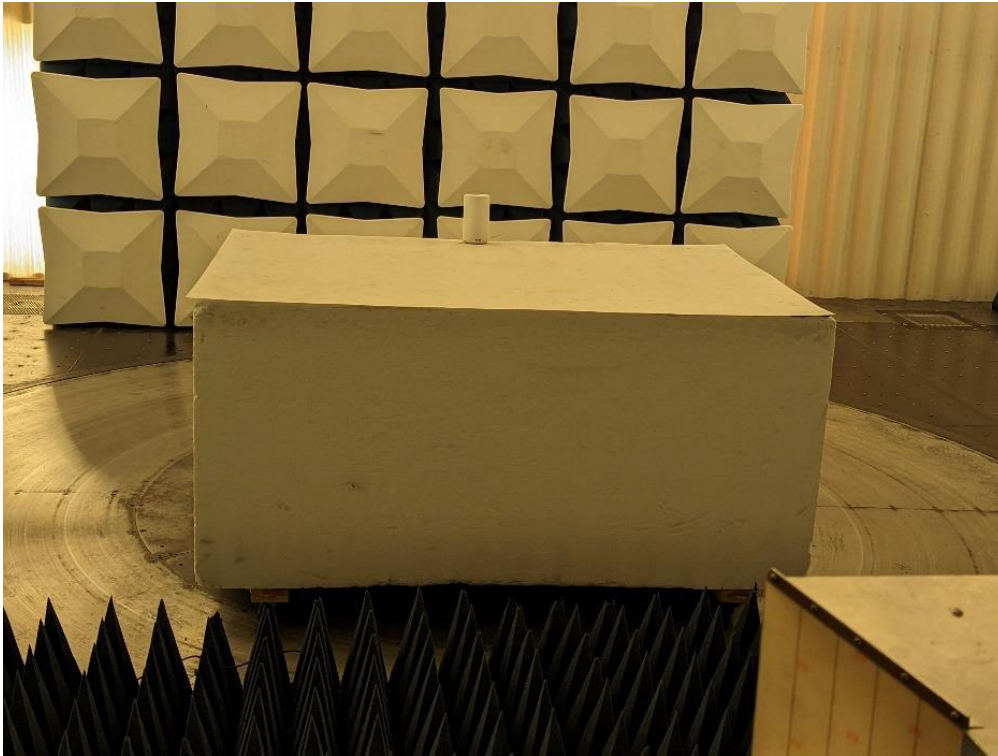
Photograph 2: Back View Radiated Emissions, Below 30 MHz Worst Case Configuration



Photograph 3: Front View Radiated Emissions 30 to 1000 MHz Worst Case Configuration



Photograph 4: Back View Radiated Emissions 30 to 1000 MHz Worst Case Configuration



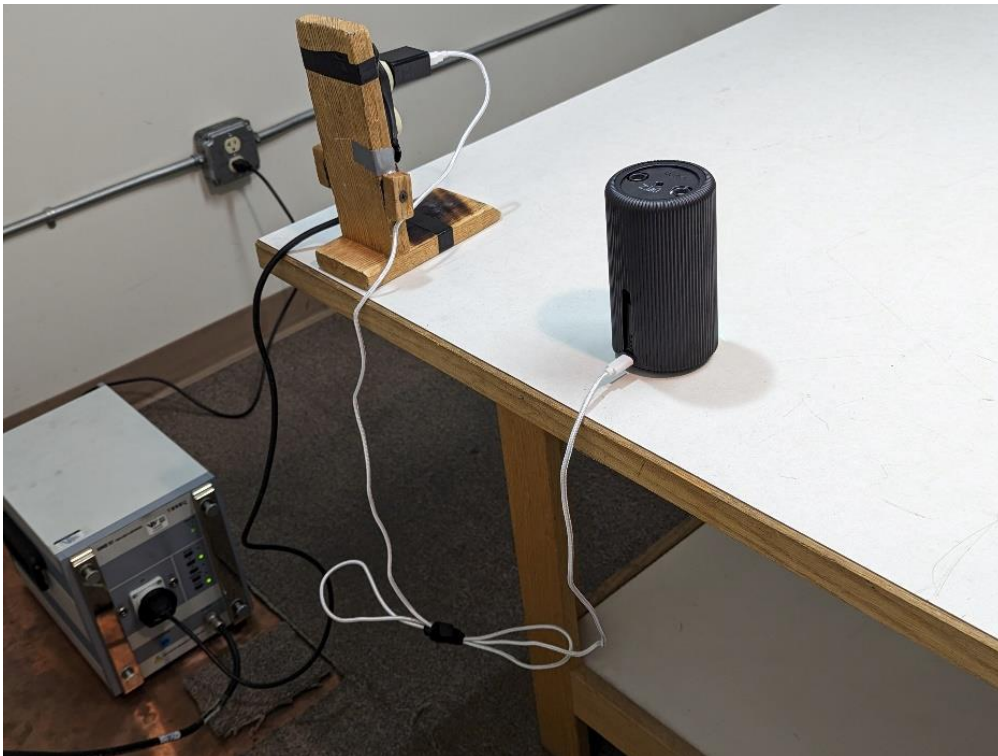
Photograph 5: Front View Radiated Emissions above 1000 MHz Worst Case Configuration



Photograph 6: Back View Radiated Emissions above 1000 MHz Worst Case Configuration



Photograph 5: Front View Conducted Emissions

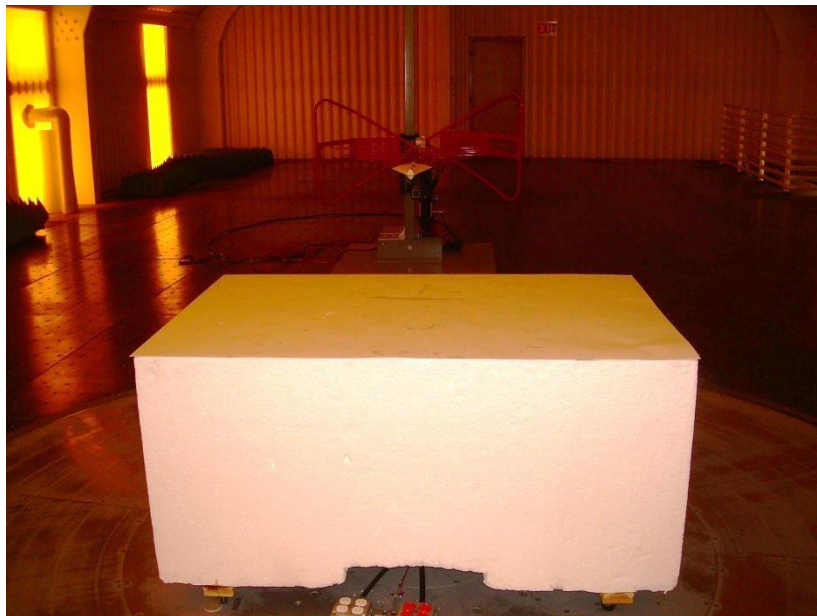


Photograph 6: Back View Conducted Emissions

Reference Test Set Up Photographs



Photograph 7: Reference Photo of Test Setup for Emissions Below 30 MHz



Photograph 8: Reference Photo of Test Setup for Emissions From 30 MHz to 1000 MHz



Photograph 9: Reference Photo of Test Setup for Emissions Above 1000 MHz