



Layout 2009

SolidSense Compact
Rev1.4

CDX-2
M194V-0
EJ2N7349

M2

U16

U29

U27

U25

U22

U28

U24

U23

U21

U20

U19

U18

U17

U15

U14

U13

U12

U11

U10

U9

U8

U7

U6

U5

U4

U3

U2

U1

U0

U-1

U-2

U-3

U-4

U-5

U-6

U-7

U-8

U-9

U-10

U-11

U-12

U-13

U-14

U-15

U-16

U-17

U-18

U-19

U-20

U-21

U-22

U-23

U-24

U-25

U-26

U-27

U-28

U-29

U-30

U-31

U-32

U-33

U-34

U-35

U-36

U-37

U-38

U-39

U-40

U-41

U-42

U-43

U-44

U-45

U-46

U-47

U-48

U-49

U-50

U-51

U-52

U-53

U-54

U-55

U-56

U-57

U-58

U-59

U-60

U-61

U-62

U-63

U-64

U-65

U-66

U-67

U-68

U-69

U-70

U-71

U-72

U-73

U-74

U-75

U-76

U-77

U-78

U-79

U-80

U-81

U-82

U-83

U-84

U-85

U-86

U-87

U-88

U-89

U-90

U-91

U-92

U-93

U-94

U-95

U-96

U-97

U-98

U-99

U-100

U-101

U-102

U-103

U-104

U-105

U-106

U-107

U-108

U-109

U-110

U-111

U-112

U-113

U-114

U-115

U-116

U-117

U-118

U-119

U-120

U-121

U-122

U-123

U-124

U-125

U-126

U-127

U-128

U-129

U-130

U-131

U-132

U-133

U-134

U-135

U-136

U-137

U-138

U-139

U-140

U-141

U-142

U-143

U-144

U-145

U-146

U-147

U-148

U-149

U-150

U-151

U-152

U-153

U-154

U-155

U-156

U-157

U-158

U-159

U-160

U-161

U-162

U-163

U-164

U-165

U-166

U-167

U-168

U-169

U-170

U-171

U-172

U-173

U-174

U-175

U-176

U-177

U-178

U-179

U-180

U-181

U-182

U-183

U-184

U-185

U-186

U-187

U-188

U-189

U-190

U-191

U-192

U-193

U-194

U-195

U-196

U-197

U-198

U-199

U-200

U-201

U-202

U-203

U-204

U-205

U-206

U-207

U-208

U-209

U-210

U-211

U-212

U-213

U-214

U-215

U-216

U-217

U-218

U-219

U-220

U-221

U-222

U-223

U-224

U-225

U-226

U-227

U-228

U-229

U-230

U-231

U-232

U-233

U-234

U-235

U-236

U-237

U-238

U-239

U-240

U-241

U-242

U-243

U-244

U-245

U-246

U-247

U-248

U-249

U-250

U-251

U-252

U-253

U-254

U-255

U-256

U-257

U-258

U-259

U-260

U-261

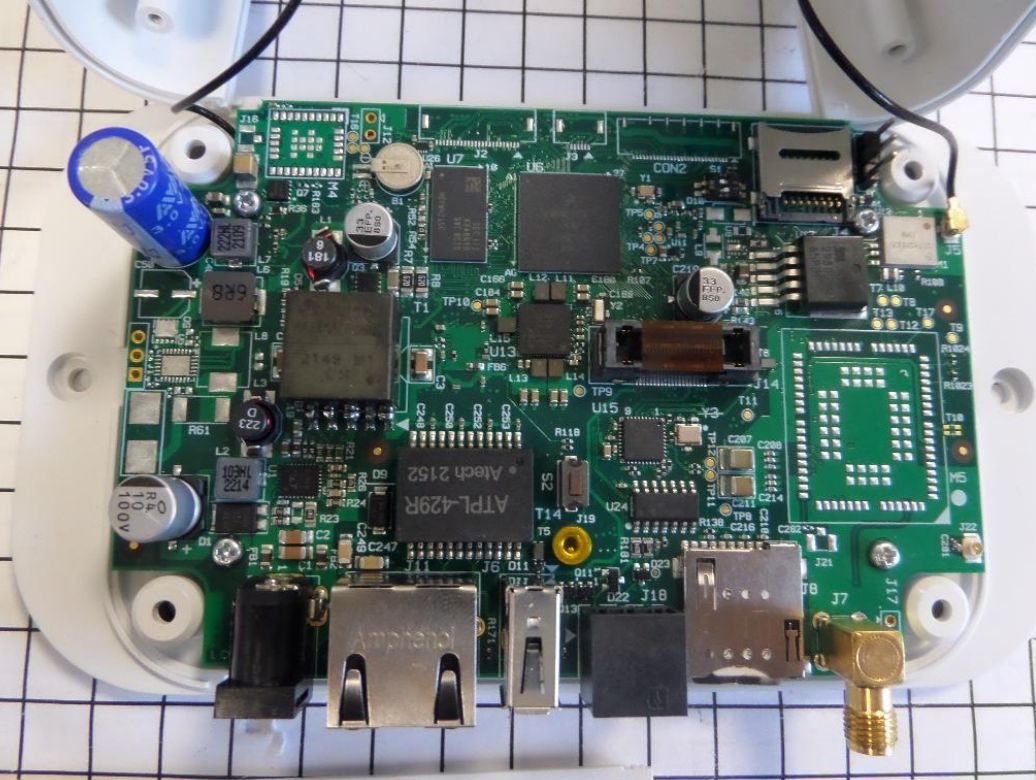
U-262

U-263

U-264

U-265

<



04
10
100V

220K
2105

33
EP-
0.20

Attech 2152
ATPL-429R

33
EP-
0.20

Amphenol

1000