



# HEYUAN XUNWEI MICROWAVE COMMUNICATION CO.,LTD

## S401 Mobile antenna test report

RF: Kang Guangqi

Date: 2023.04.06

# Contents:

- 1、 Test equipment
- 2、 Passive data
- 3、 Contact information

# 1、 Test equipment

Wireless communications test set: CMW500

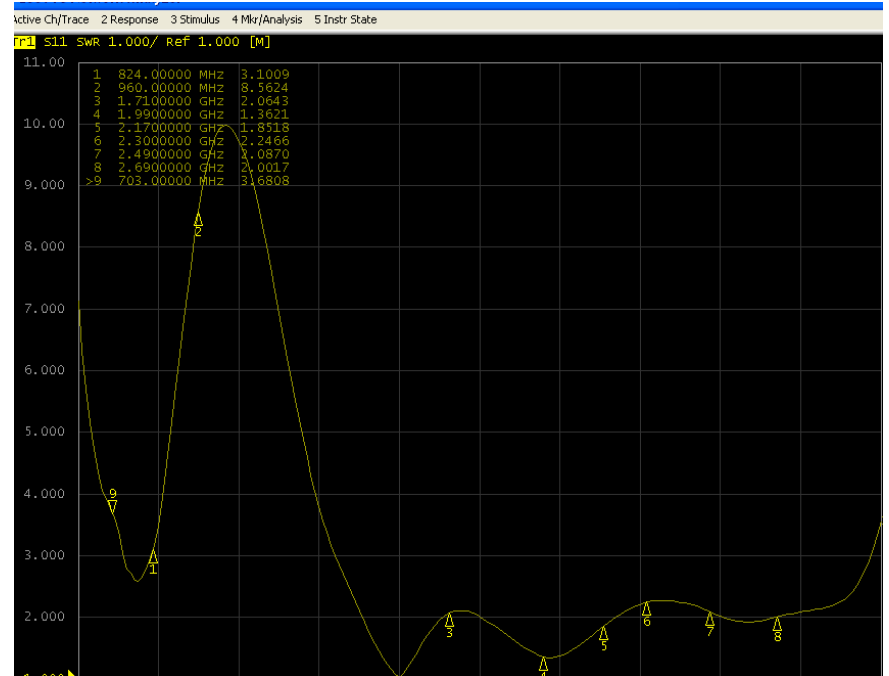
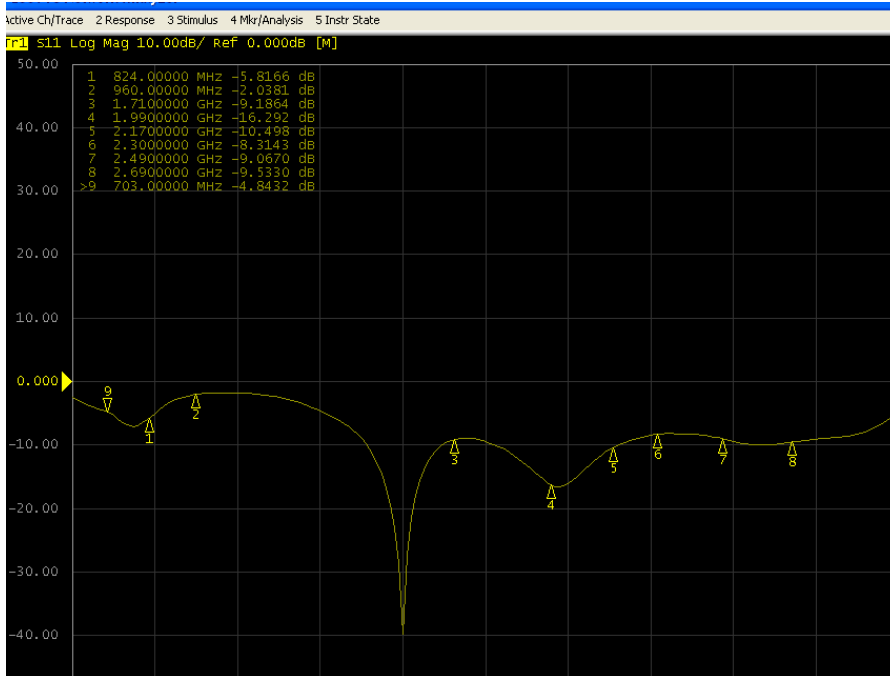
Network Analyzer: Agilent 5071B

Anechoic Chamber : SATIMO SG24



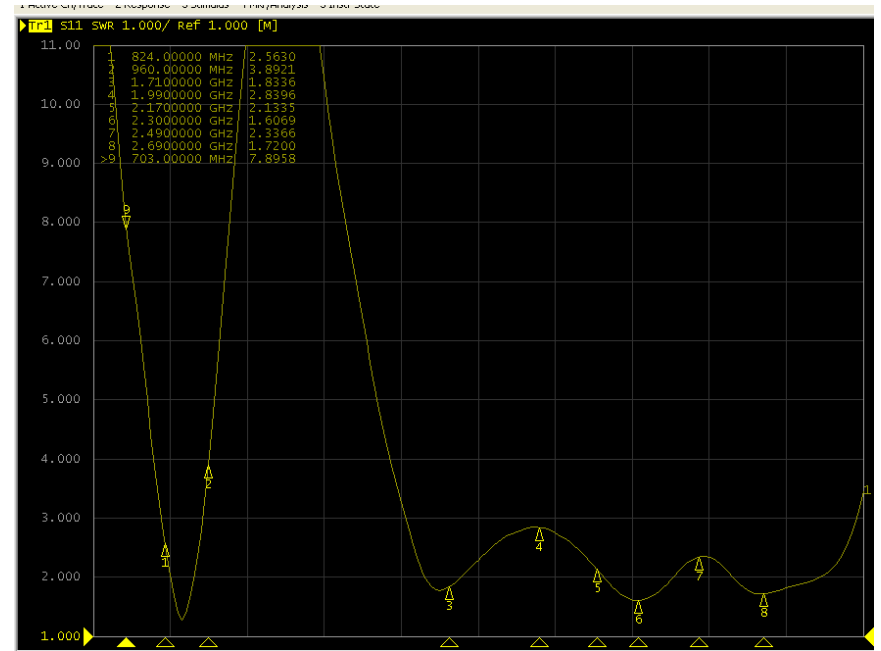
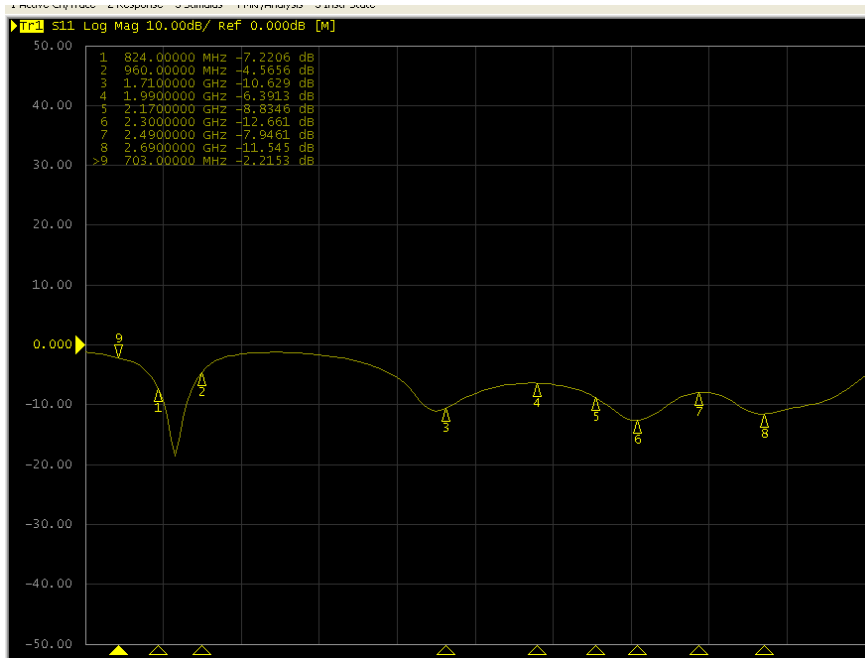
# 2、Passive data

## 2.1 Main antenna Return Loss & VSWR(700~800M)



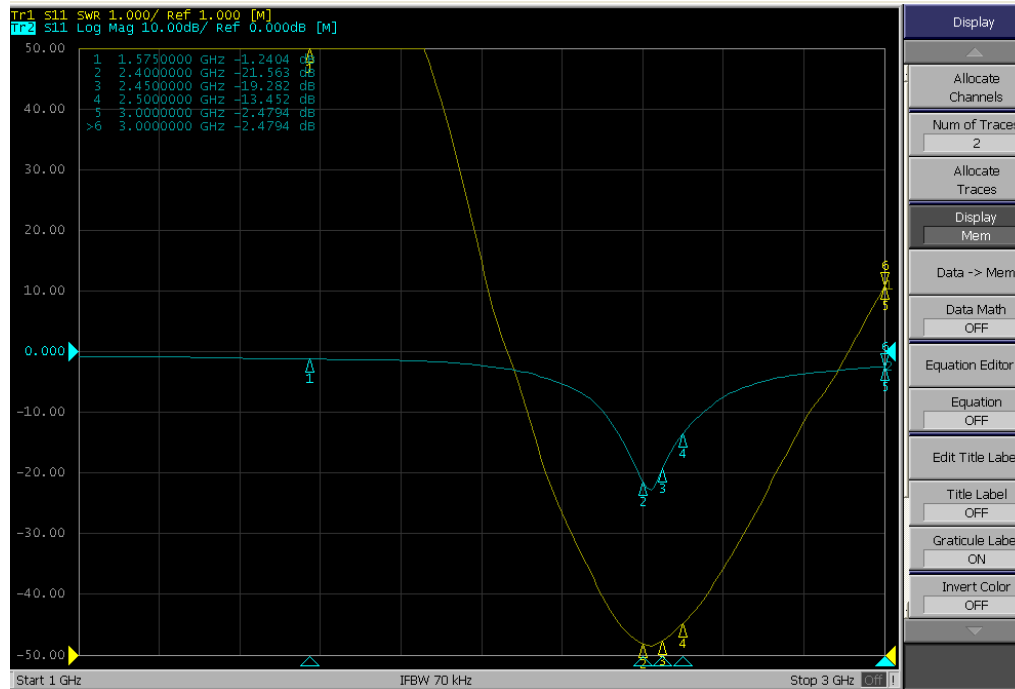
Frequency	700MHZ	800MHZ
Return Loss	-4.9	-5.3
VSWR	3.1	2.7

# 2.2 Main antenna Return Loss & VSWR(824~2700M)



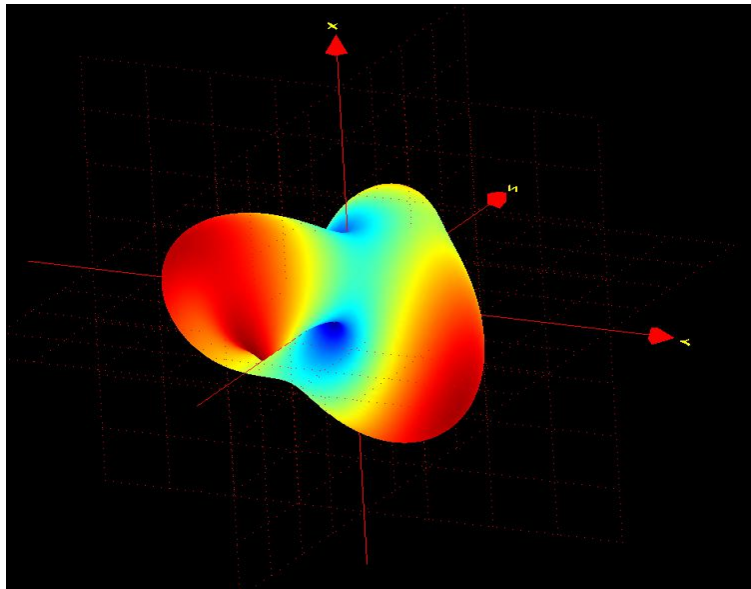
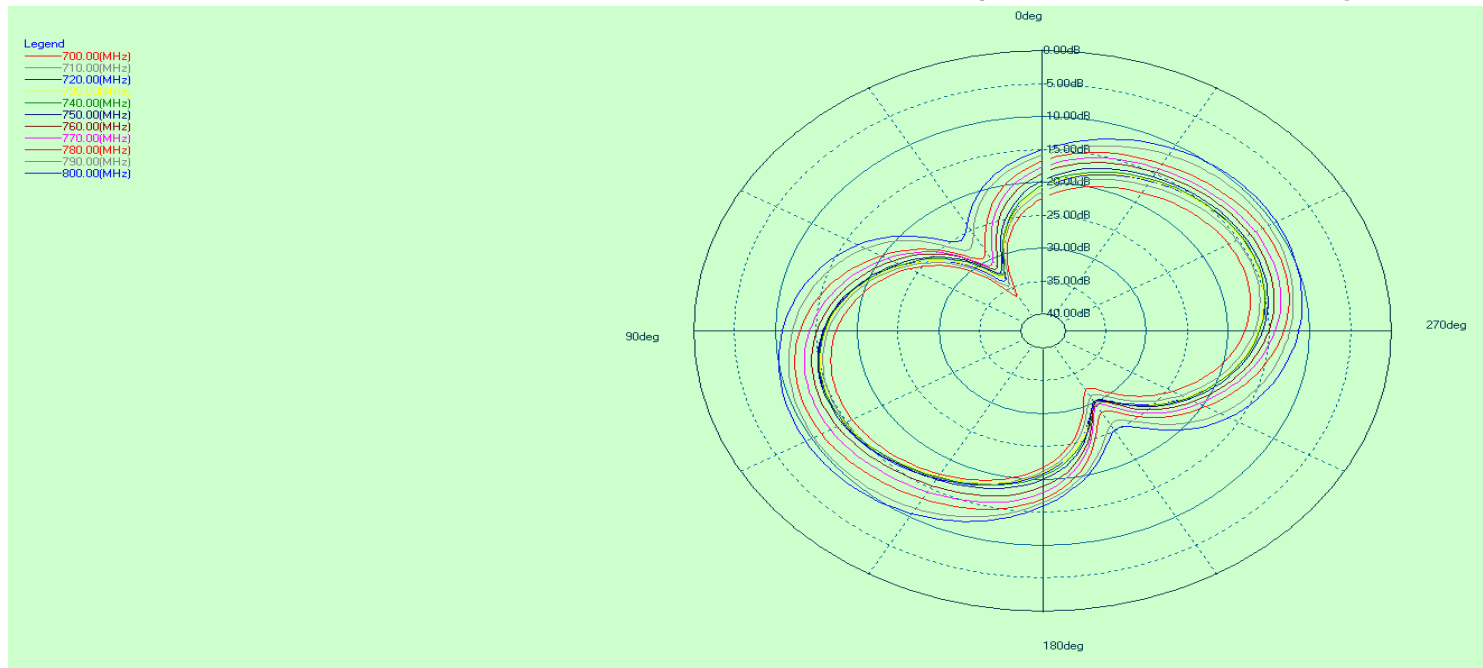
Frequency	824MHZ	2700MHZ
Return Loss	-7.2	-11.6
VSWR	2.5	1.7

## 2.3 BT antenna Return Loss & VSWR(2400~2500M)



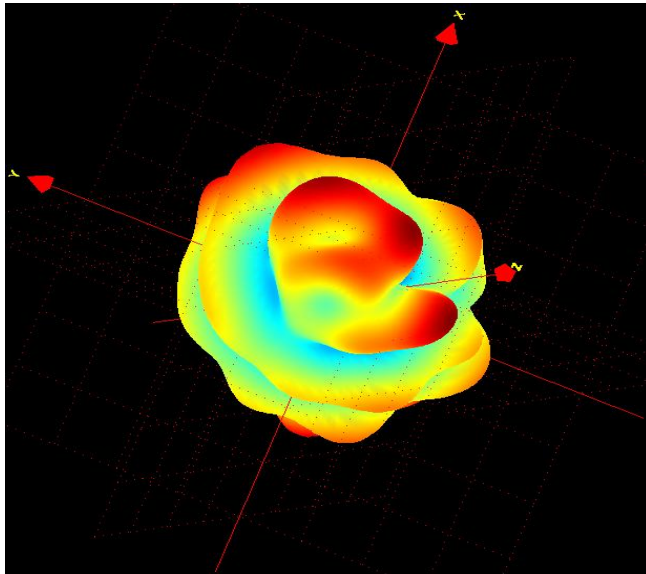
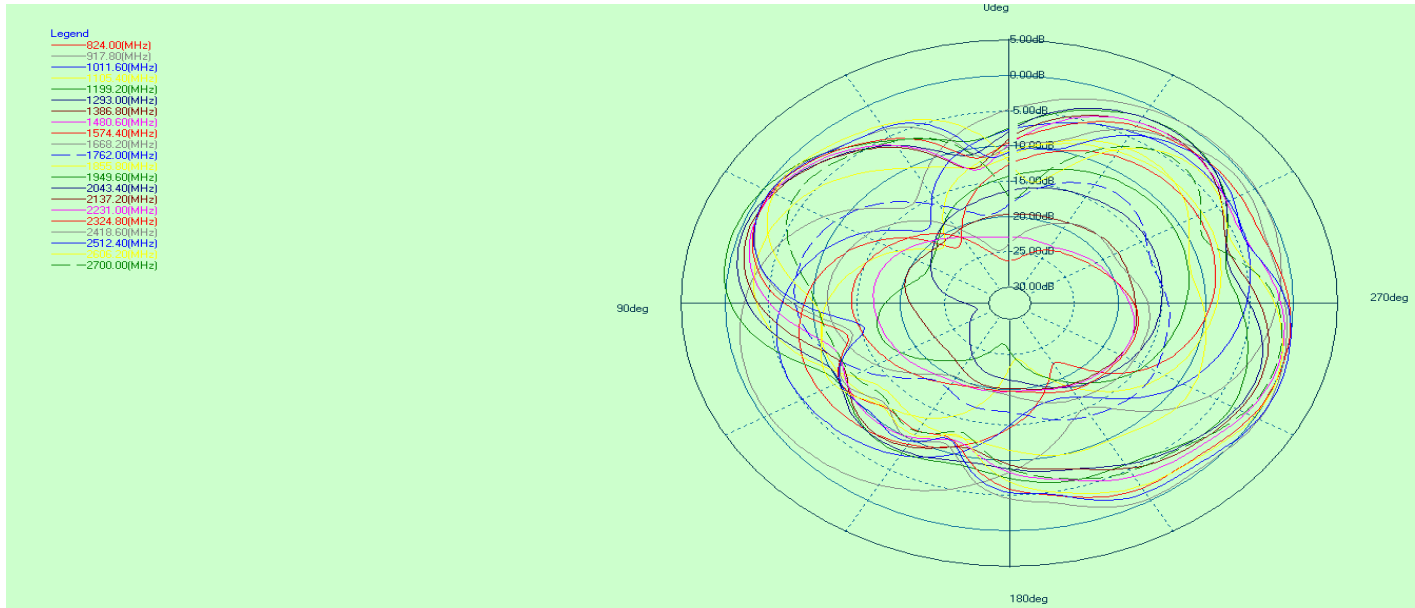
Frequency	2400MHZ	2500MHZ
Return Loss	-21.5	-13.4
VSWR	1.2	1.6

## 2.4 Main antenna Peak Gain(700~800M)



Freq.(MHZ)	Peak .Gain	Effi.(%)
750	-0.98	26.3

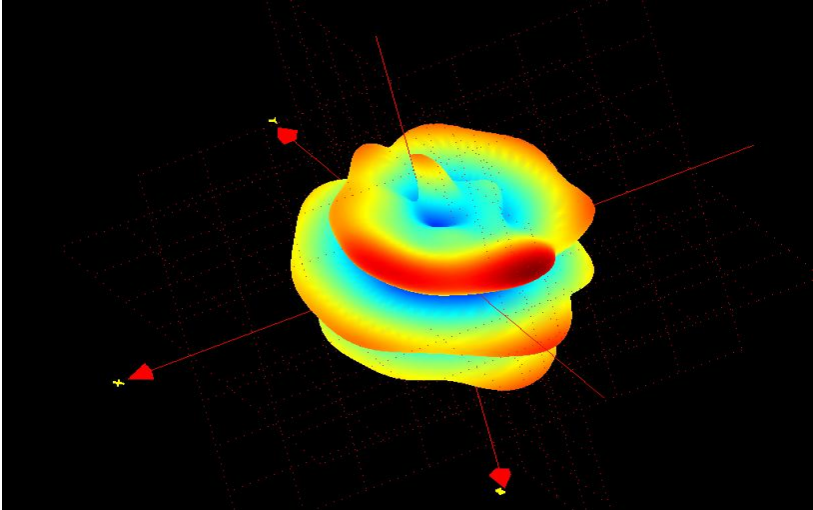
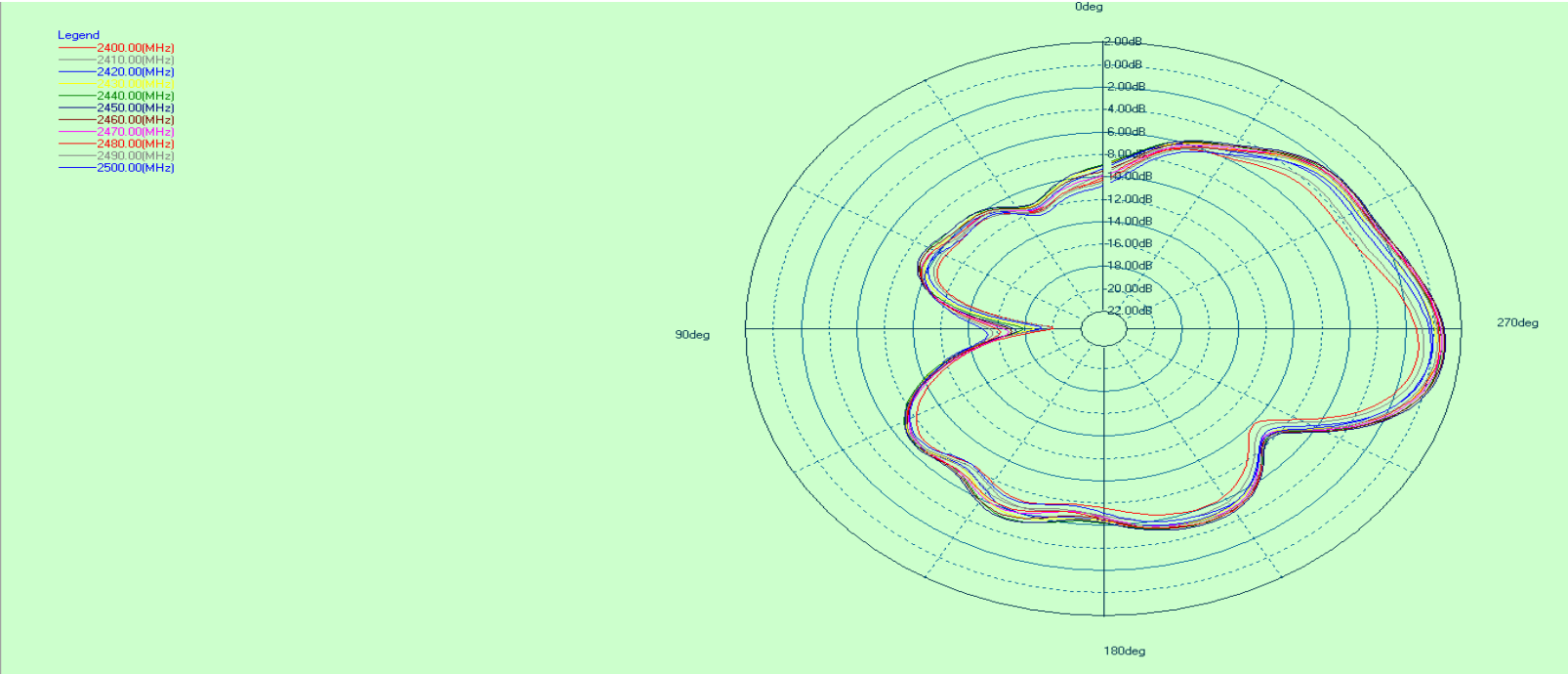
# 2.5 Main antenna Peak Gain(824~2700M)



Freq.(MHZ)	Peak .Gain	Effi.(%)
824	-1.08	28.2
2700	0.66	35.4



# 2.6 BT antenna Peak Gain(2400~2500M)

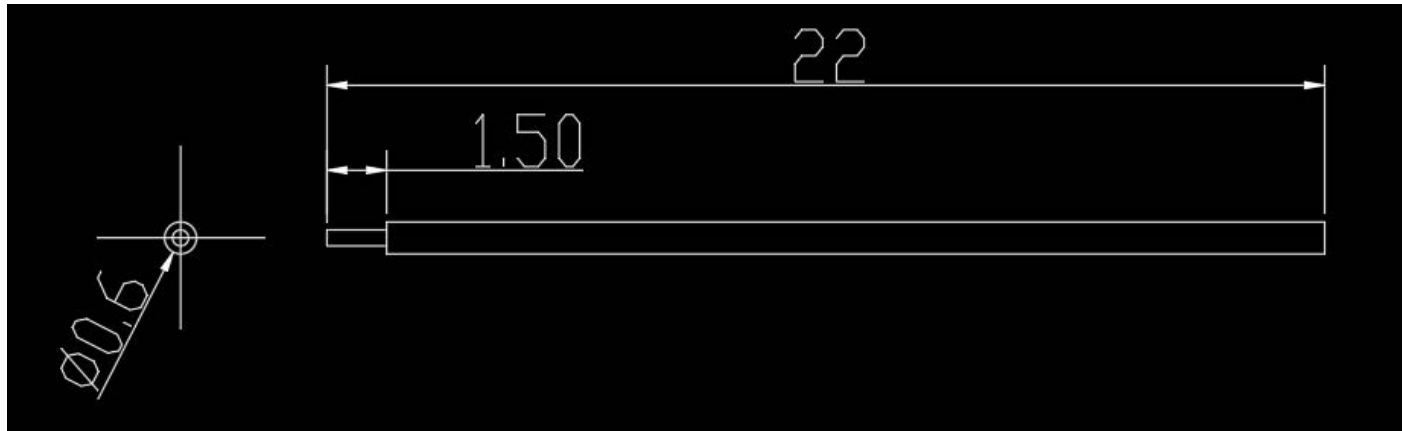


Freq.(MHZ)	Peak .Gain	Effi.(%)
2400	-0.36	23.2
2500	-0.69	21.7

BT Antenna

Antenna type: Cable Antenna

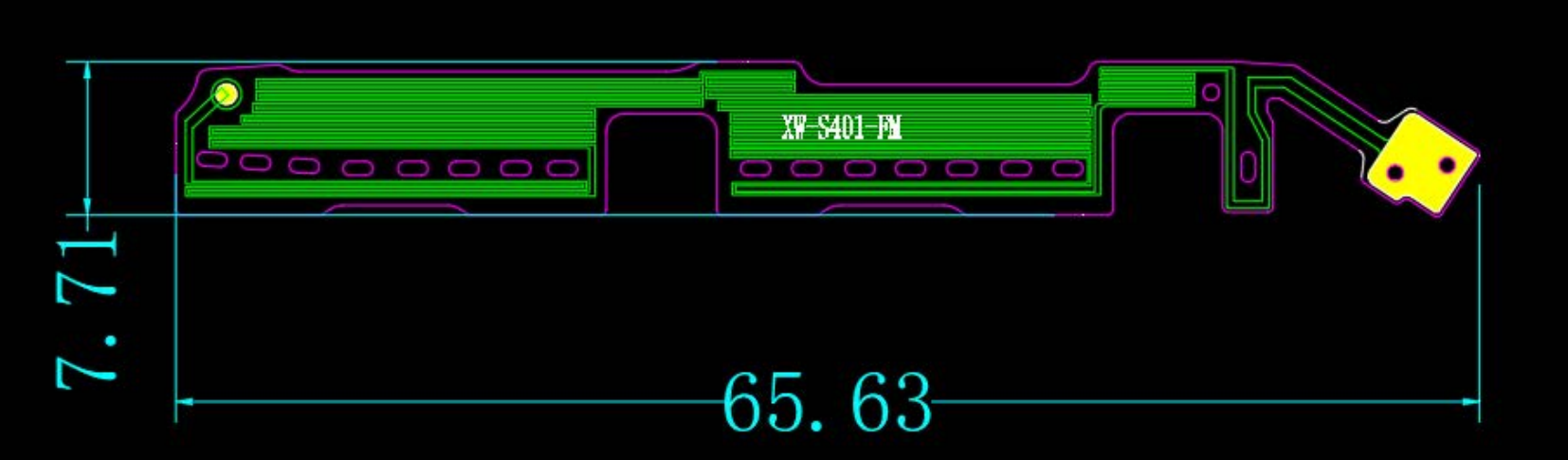
Unit:mm



# LTE Aux Antenna

Antenna type: PIFA Antenna

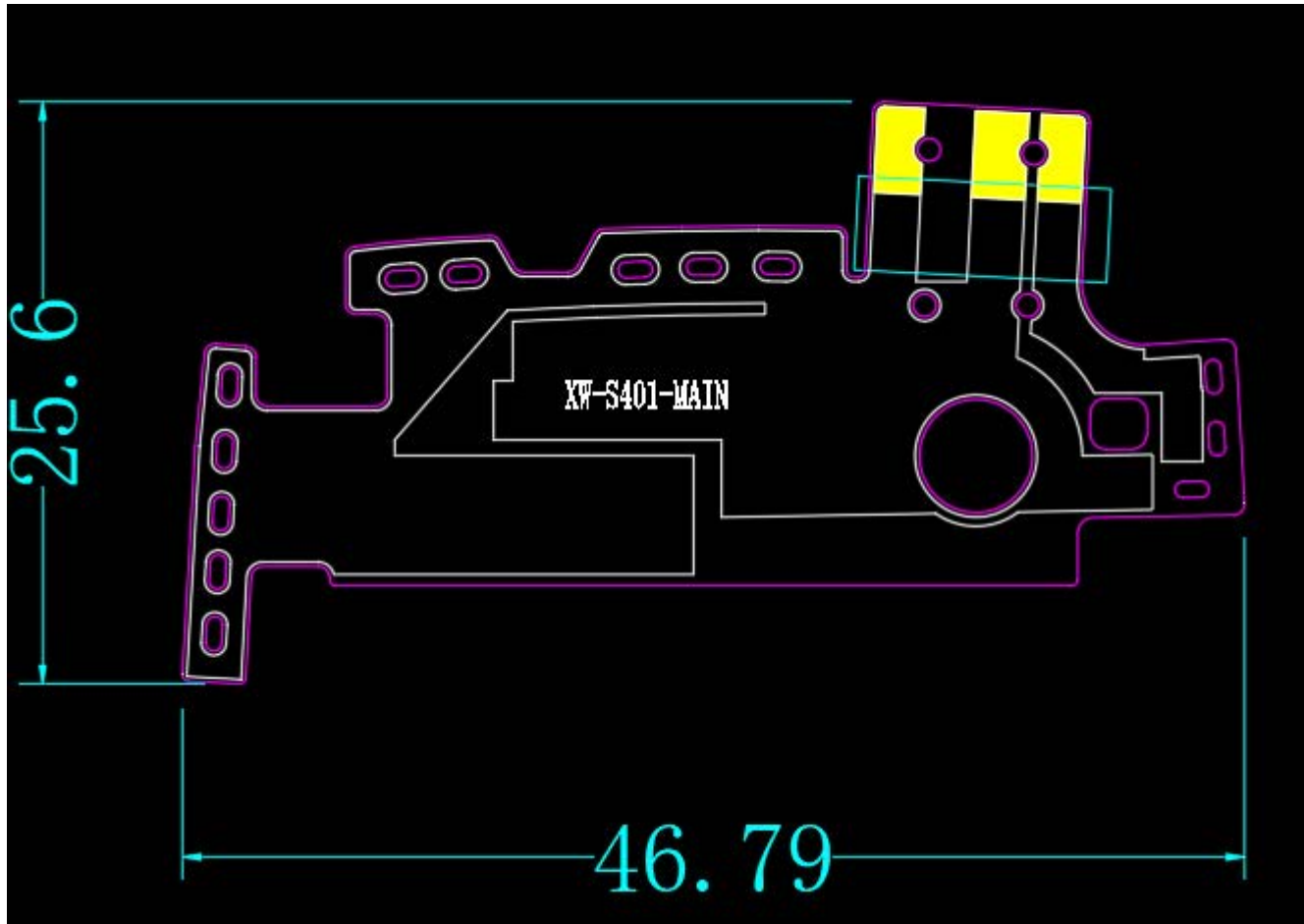
Unit:mm



# GSM/WCDMA/LTE Main Antenna

Antenna type: PIFA Antenna

Unit:mm



### 3 、 Contact information

Business manager: Yue Yongde	电话： 15072046607 邮箱： yueyd@xunweitx.com
RF Engineer: Kang Guangqi	电话： 13657910804 邮箱： kanggq@xunweitx.com
Structural Engineer: Li Wenbo	电话： 15919806329 邮箱： liwb@szcoe.com