

Antenna Test Report

SHENZHEN KURUIJIE

Customer: 忆博通
Project: T106

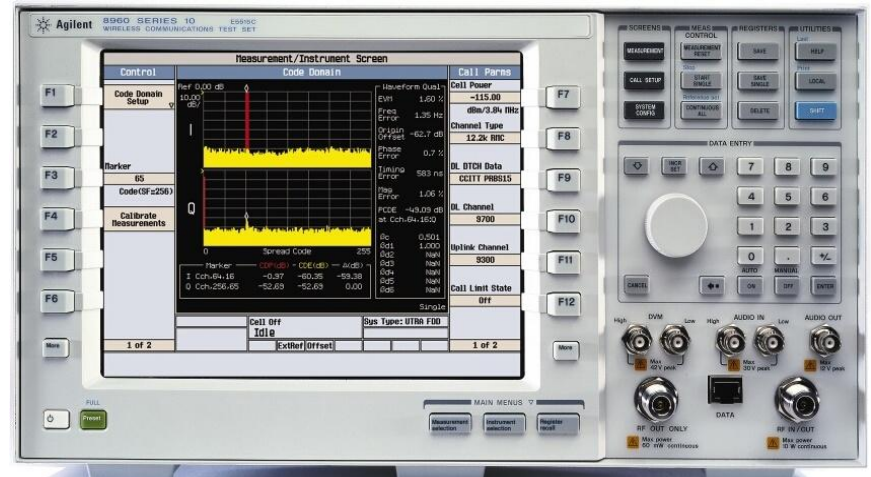
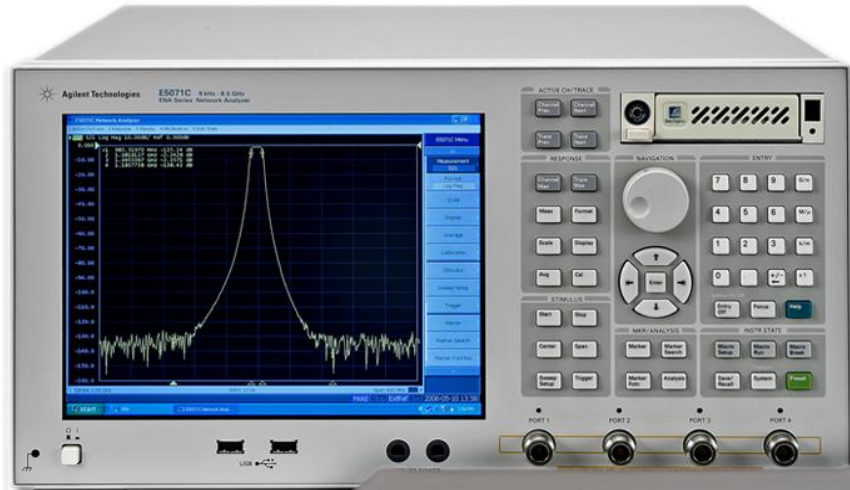
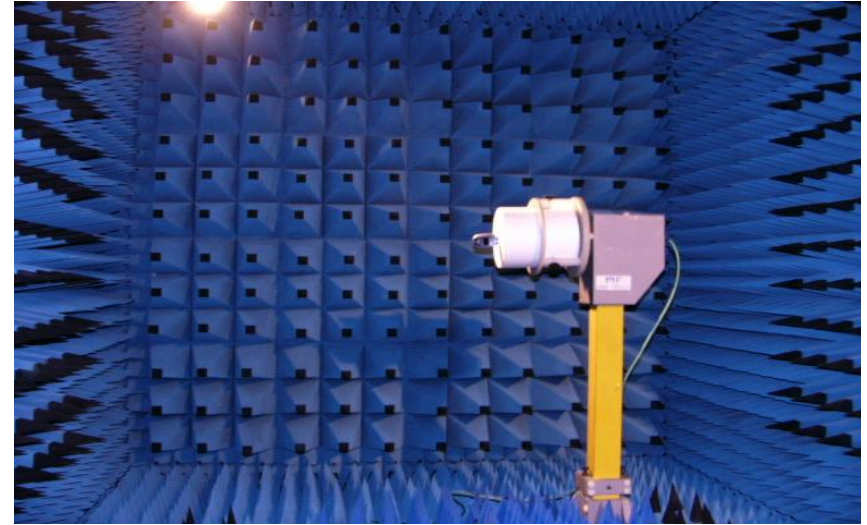
RF Engineer: 邹修依
Testing Date: 2024.05.15

Index:

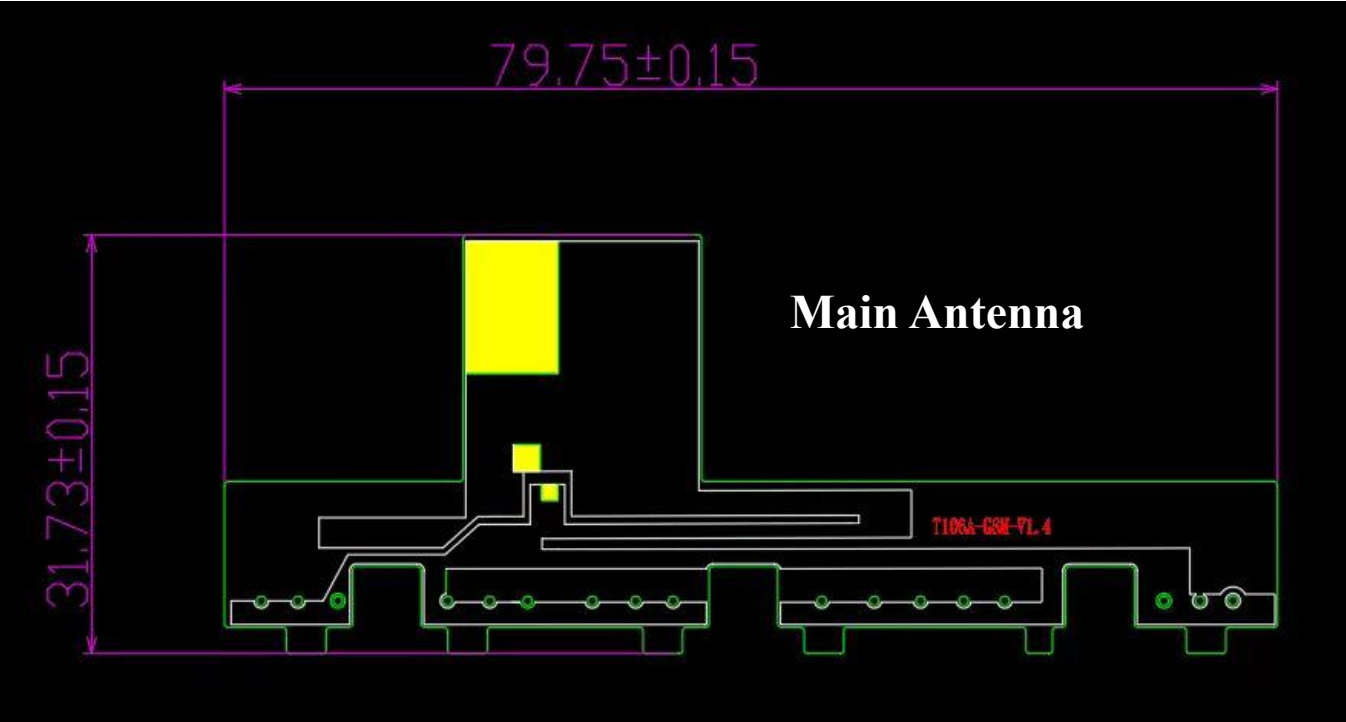
- 1. Testing Item & Equipments**
- 2. Matching Circuits**
- 3. Antenna Conditions**
- 4. Test Data**
- 5. GPS / WIFI / BT Test**
- 6. Passive data Main antenna**
- 7. Passive data GPS / WIFI / BT**
- 8.drawing sheet**

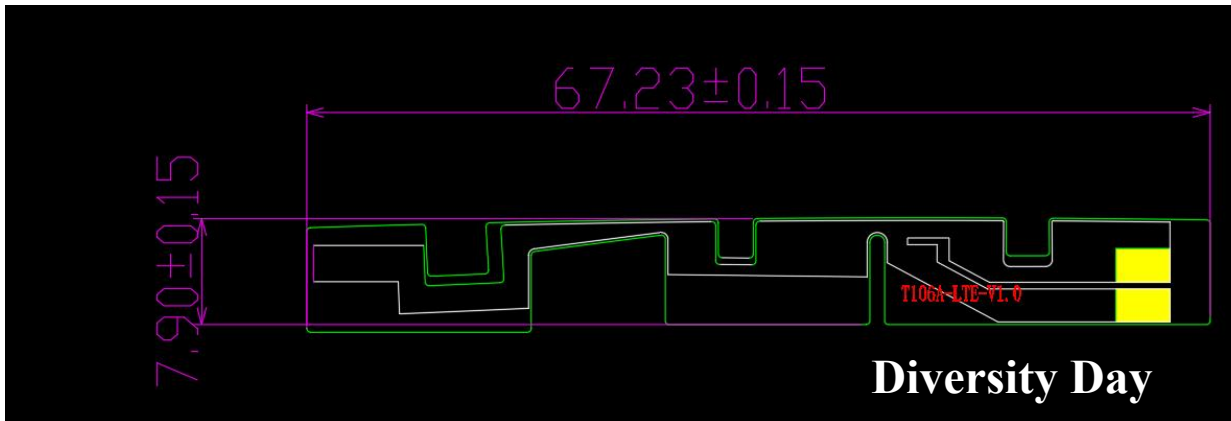
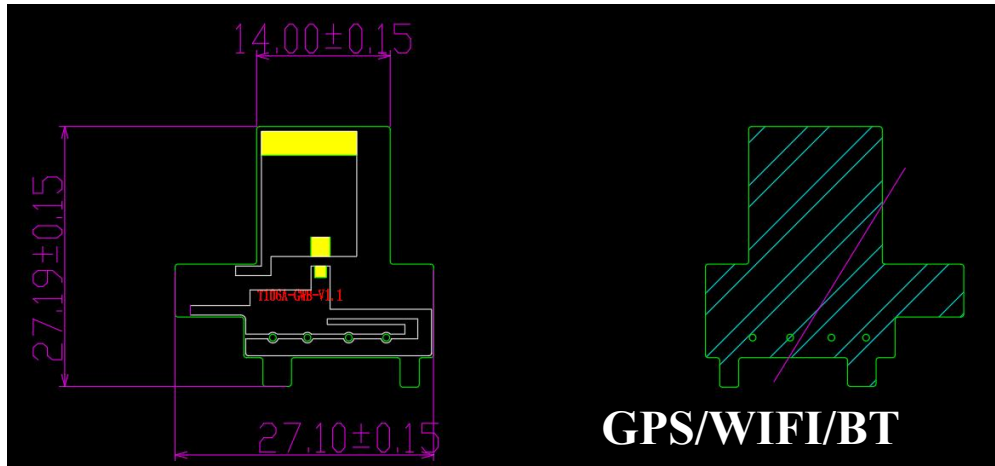
1. The Equipment of Active Test

- 1: Anechoic Chamber 7x4x3 m (3D)
- 2: Rohde & Schwarz CMW500
- 3: AGILENT 8960 5515C
- 4: Network Analyzer-AGILENT ENA5071B



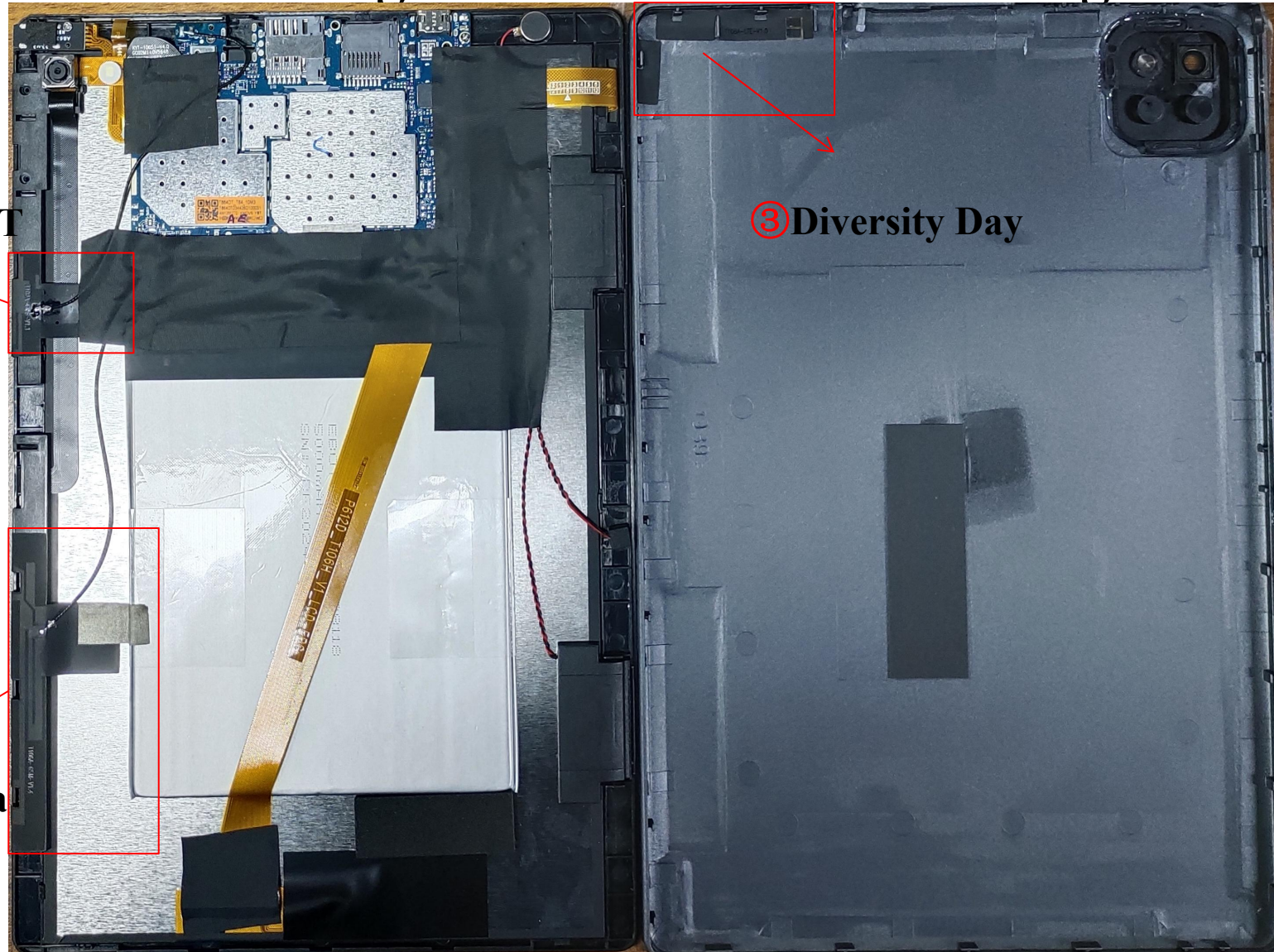
2. Antenna size diagram





3. Matching circuit

Even the matching circuit has not been changed



② GPS/WIFI/BT

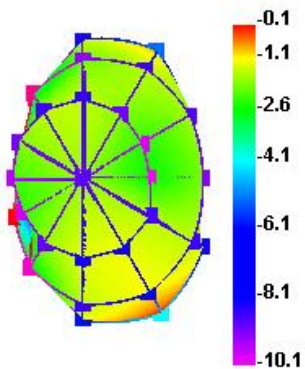
③ Diversity Day

① Main Antenna

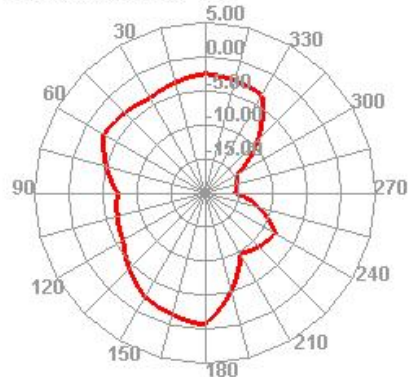
4. Antenna gain/Apple figure

T106 antenna info.			
	Band	Frequency (MHZ)	Max Gain (Dbi)
RF antenna	GSM850	824-894	-0.3
	EGSM900	880-960	-2.0
	DCS1800	1710-1880	1.5
	PCS1900	1850-1990	1.0
	WCDMA-B1	1920-2170	0.8
	WCDMA-B2	1850-1990	0.8
	WCDMA-B5	824-894	-0.3
	LTE-B2	1850-1990	0.8
	LTE-B4	1710-2155	1.5
	LTE-B5	824-894	-0.3
	LTE-B7	2500-2690	1.2
	LTE-B13	746-787	-0.3
	LTE-B28	703-803	-0.3
	LTE-B66	1710-2200	1.5
GPS/wifi/BT	wifi2.4/BT	2400-2500MHZ	0.7
	wifi5.8	5150-5850MHZ	1.0
	GPS	1575MHZ	0.5

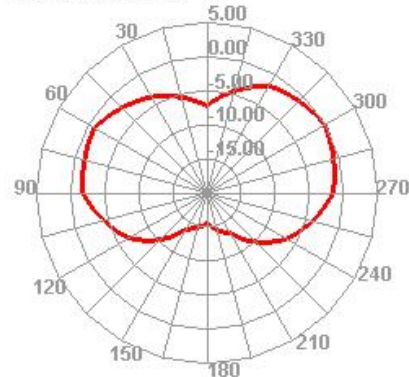
760.000MHz



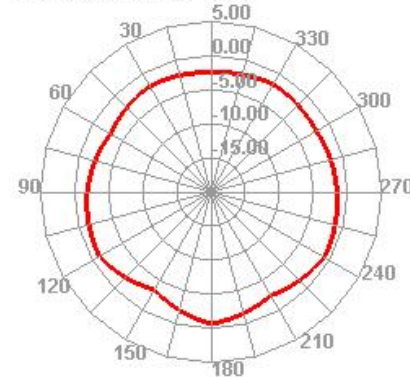
760.000MHz E1



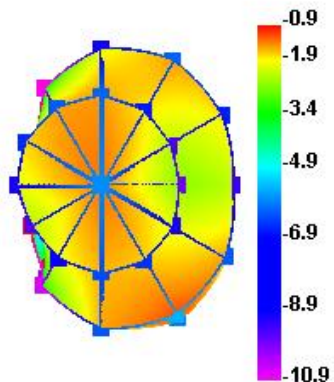
760.000MHz H



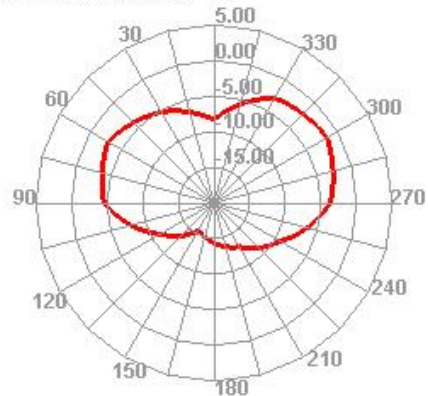
760.000MHz E2



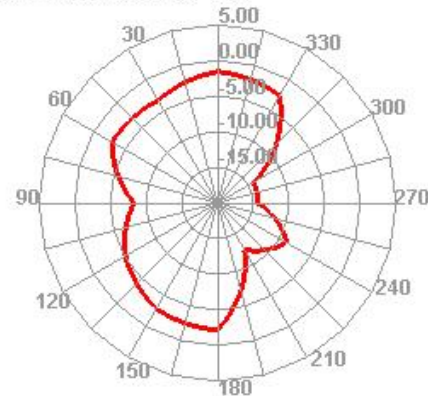
800.000MHz



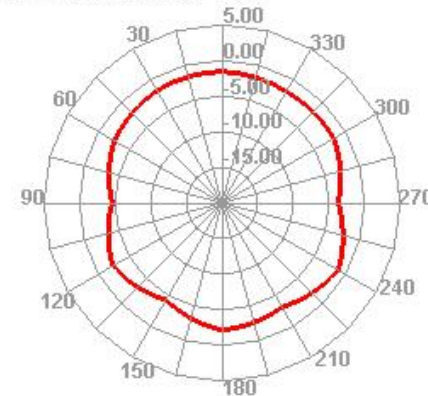
800.000MHz H



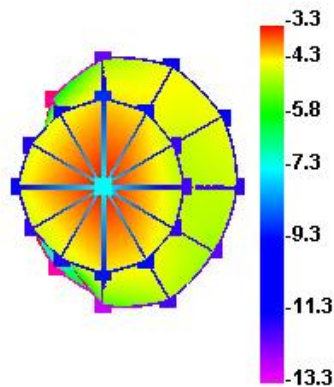
800.000MHz E1



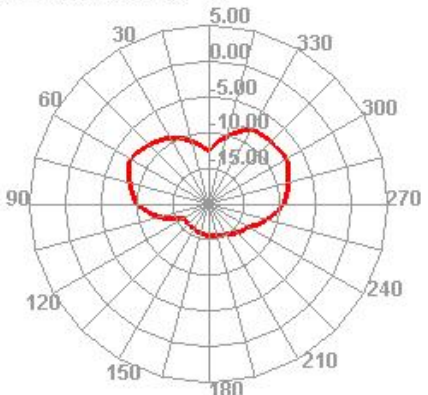
800.000MHz E2



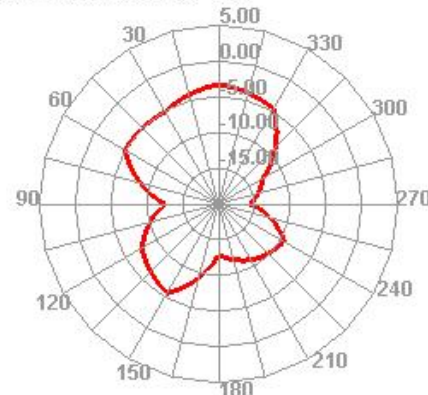
900.000MHz



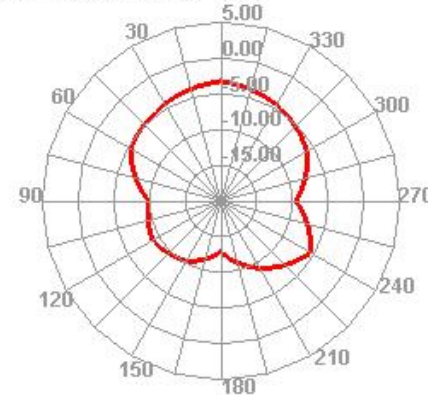
900.000MHz H



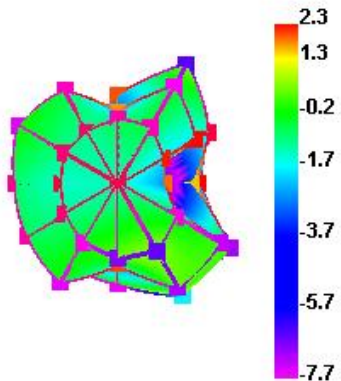
900.000MHz E1



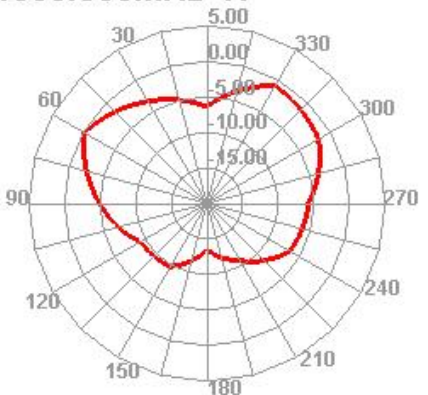
900.000MHz E2



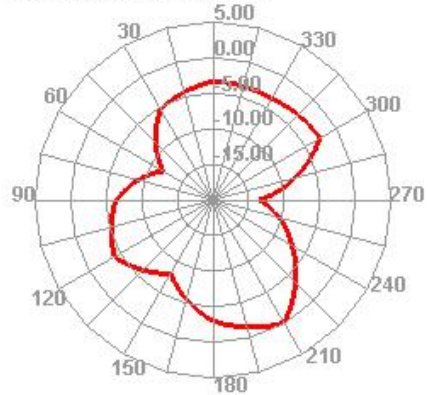
1800.000MHz



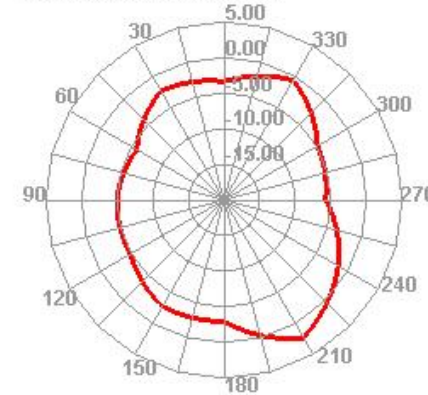
1800.000MHz H

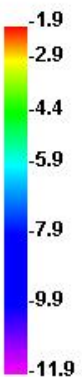
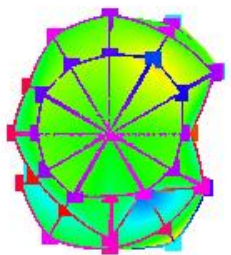
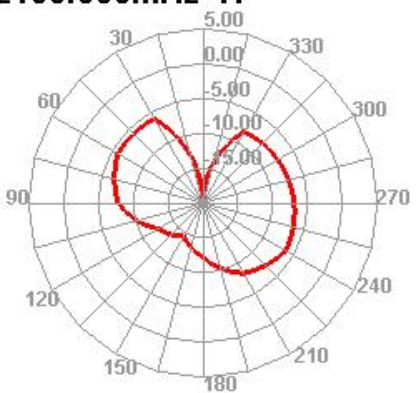
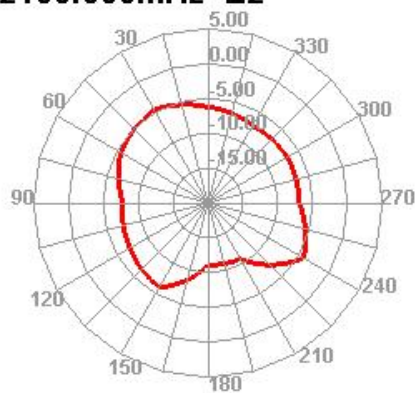
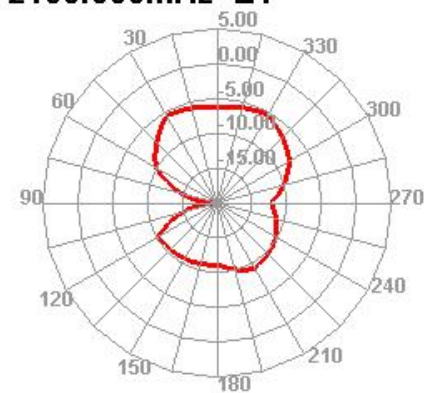
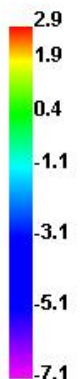
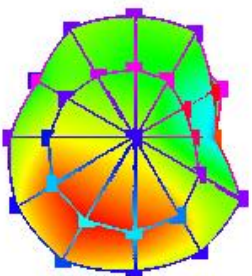
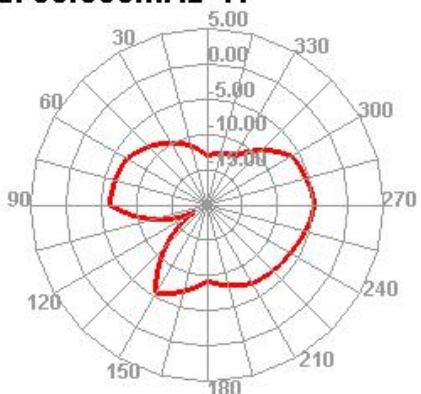
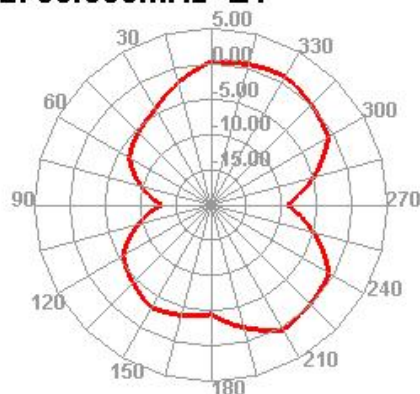
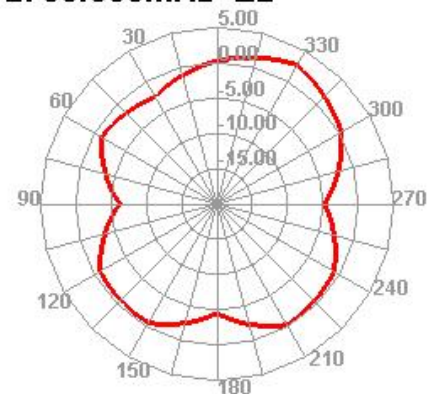
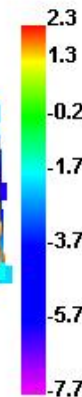
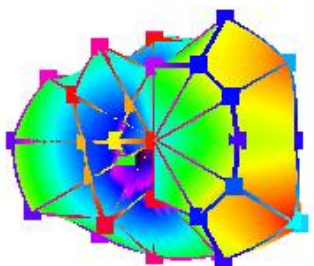
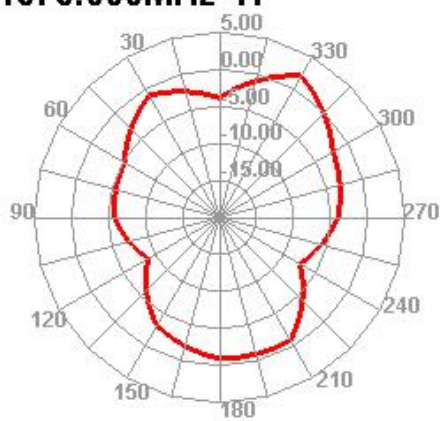
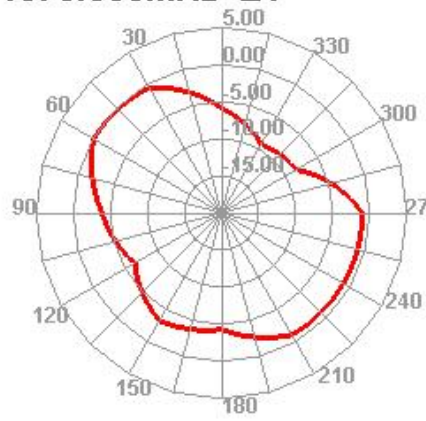
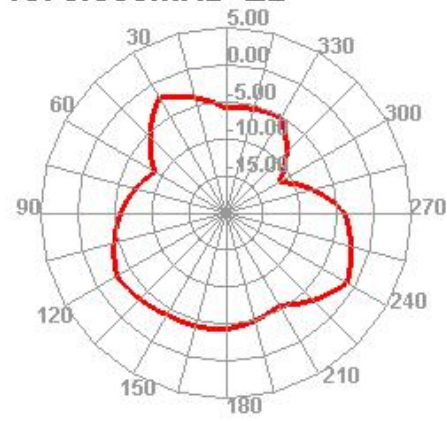


1800.000MHz E1

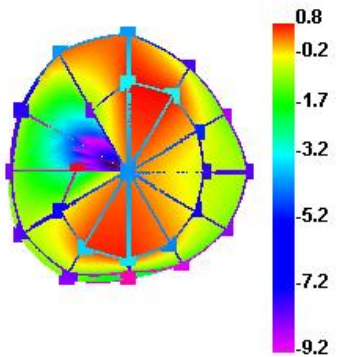


1800.000MHz E2

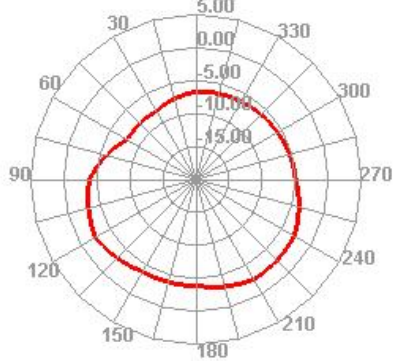


2100.000MHz**2100.000MHz H****2100.000MHz E2****2100.000MHz E1****2700.000MHz****2700.000MHz H****2700.000MHz E1****2700.000MHz E2****1575.000MHz****1575.000MHz H****1575.000MHz E1****1575.000MHz E2**

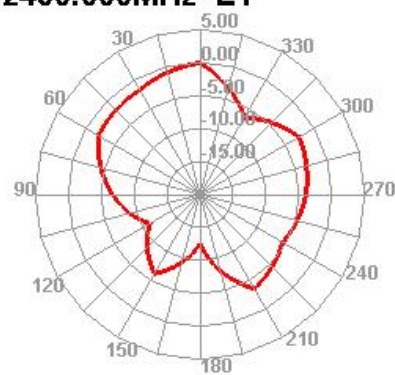
2450.000MHz



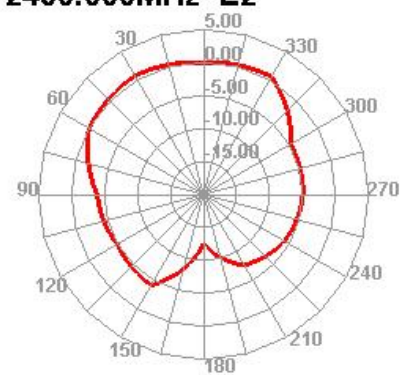
2450.000MHz H



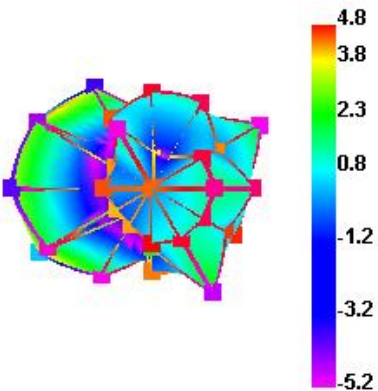
2450.000MHz E1



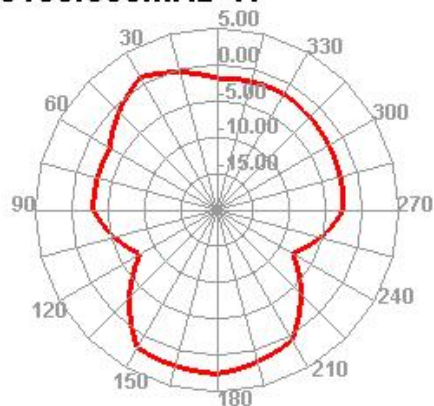
2450.000MHz E2



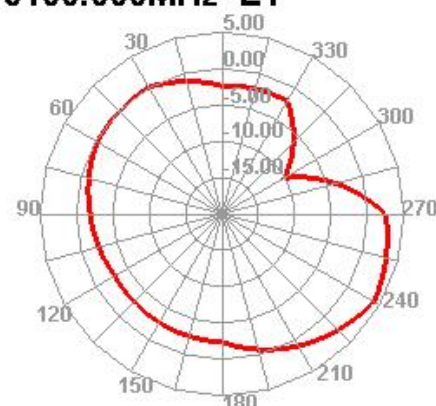
5100.000MHz



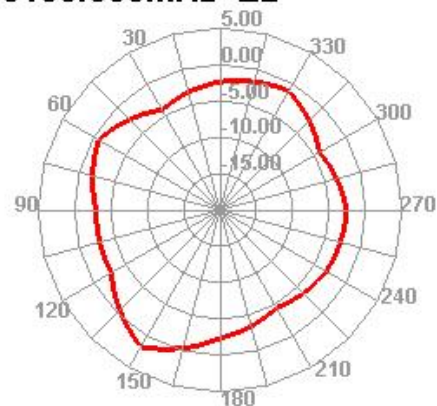
5100.000MHz H



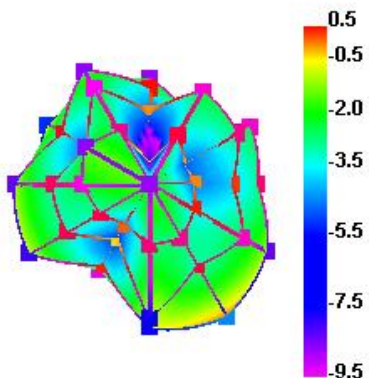
5100.000MHz E1



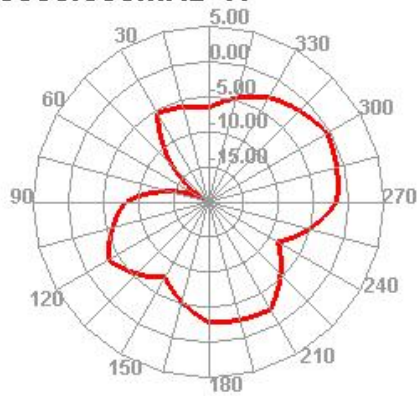
5100.000MHz E2



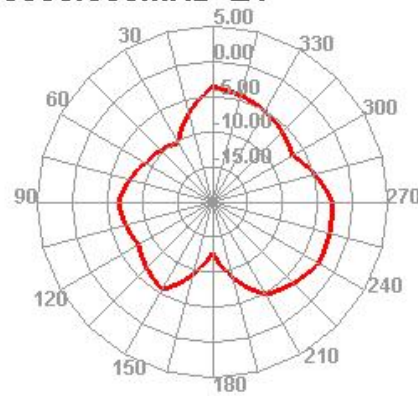
5850.000MHz



5850.000MHz H



5850.000MHz E1



5850.000MHz E2

