

Instruction manual

1、Appearance view



PS:Receive Header:1P is connected to blue light, 2P is connected to red light, double flash is not connected to the signal



2、 Hardware description:

1. HDMI: HD output
2. Mic power support: 5V / 2a, 5V / 1a, 5V / 0.5A
3. Handle interface: wired handle, wireless handle,

one second-hand handle; USB2.0 Interface

4. Indicator light: blue indicator light is on when connecting to the power supply

5. Support maximum 128g expansion TF Card

3、Function description

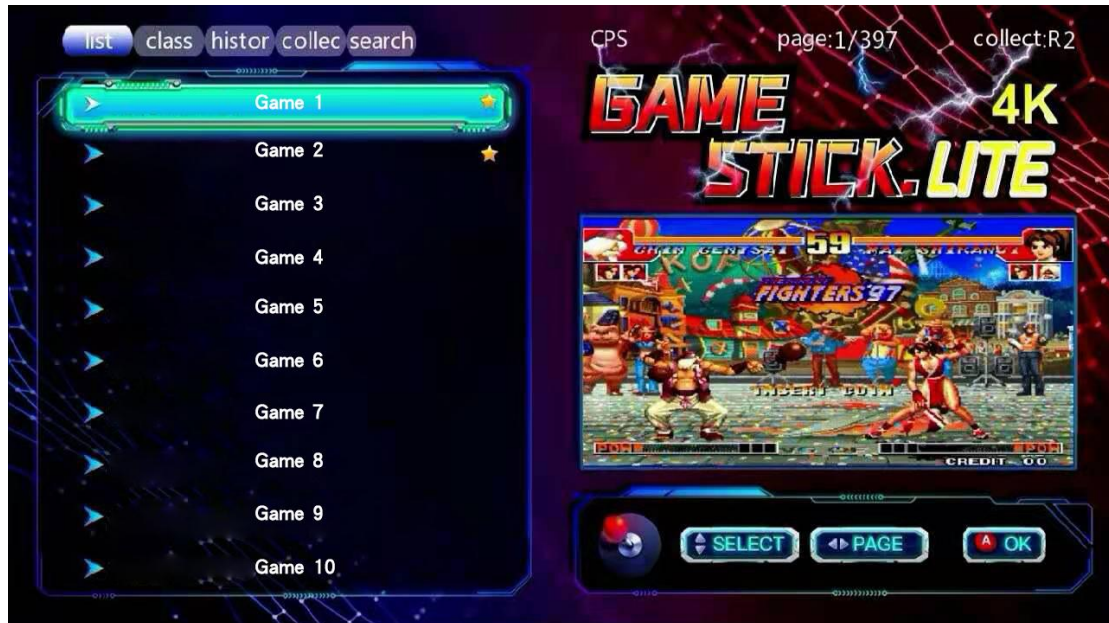
1. Supporting languages: Simplified Chinese, traditional Chinese, English and other 23 languages

2. Support functions: collection, history, search

3. Support simulator: CPS; GB; GBC; GBA; MD; SFC; FC; PS1; Atari

4、Main menu function

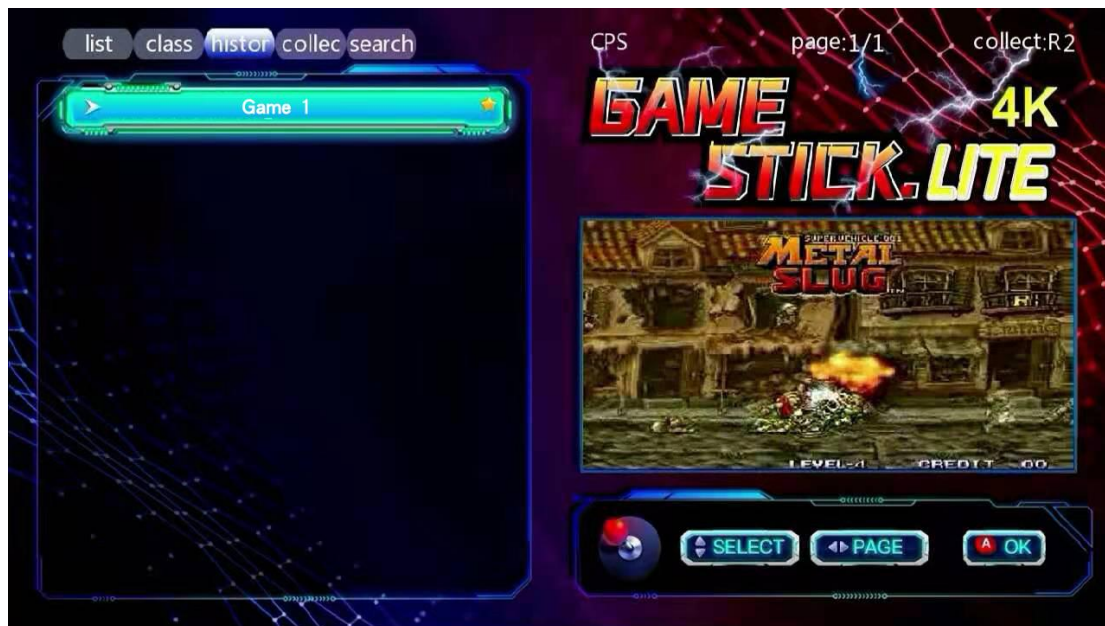
1. List: all the Games in the folder will be displayed on this page, with up and down selection and left and right page turning (in what simulator the game is in, there will be prompts on the screen)



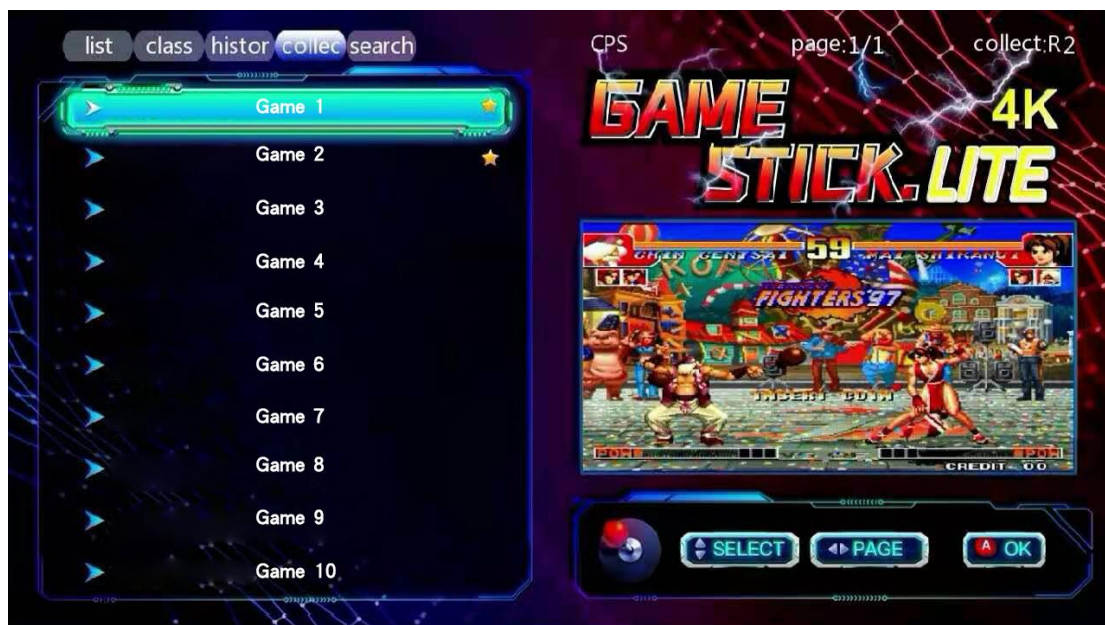
2. Classification: identify all simulators contained in the machine



3. History: after playing, the game record will be in this interface

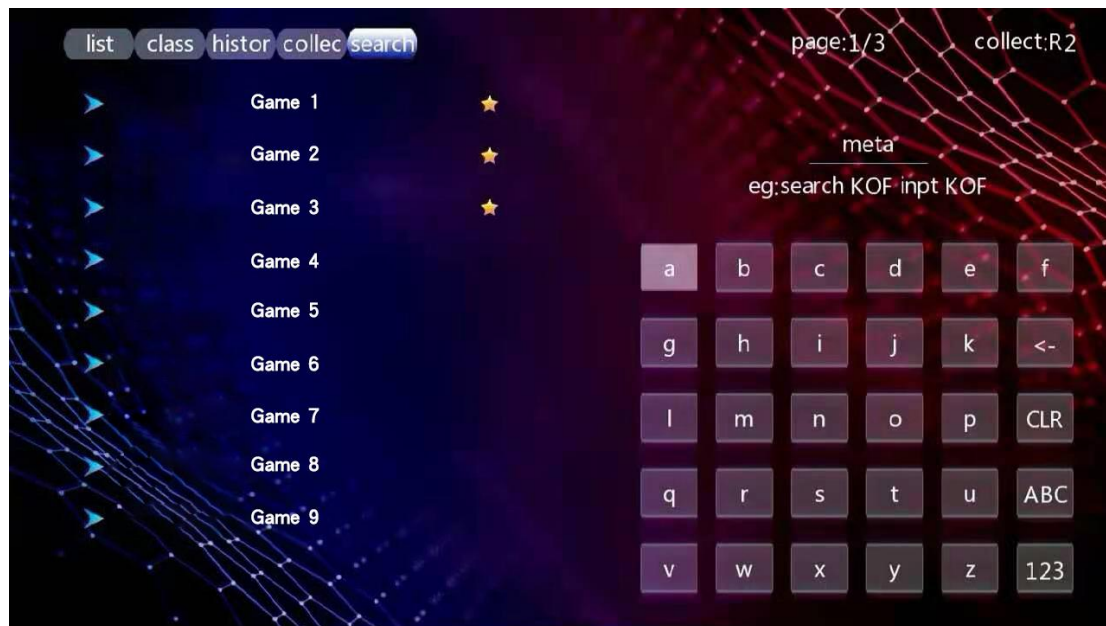


4. Collection: your favorite games can be added to the collection list



5. Search: filter the game according to the game name uppercase

letters (Note: case insensitive)



a. game

1. Press the direction key to select the game menu and press the start / a key to enter the game

2. Press B in the game list to return to the home page

3. Holding down the SELECT/START key at the same time in the game brings up a game menu that allows the user to Pause/save/load/exit the game

b. Settings



1. Handle press Select key to enter setting list, language, key tone, search local file, restore default setting and exit, system information, exit setting

5、Hardware function definition

5.1Detailed parameters

game	Support: CPS, FC, GB, GBA, GBC, MD, SFC, PS1; Atari arcade game
Power supply	5V/1A, 5V/2A, 5V/0.5A
extend	Support TF card expansion, maximum 128GB
Video output	HDMI HD output
2.4 G connector head	1P Connection Blue Light, 2P connection red light, double flash is not connected to the signal, standby time for 10 minutes

remarks:

1. The picture of the machine is for reference. The shell of the machine is subject to the material object. The instructions are only for reference. The software upgrade of the machine is subject to the material object.

2. If there is any change in the product content or parameters, please refer to the current product without notice.

3. The machine is stored in zero files at the factory. All external files (audio, video, games, pictures, etc.) must be deleted immediately after the demonstration. The company will not take any responsibility for this.

4. Charging method: please use the output 5v-1a charger, connect the data cable to the USB port of the machine for power on

5. Executive standard: gb17625.1-2012, gb8898-2011, GB / t13837-2012

6. Children between 6.0 and 14 years old need to be accompanied by an adult to use this product.

7. Download instructions: please download the game according to the format supported by the machine, and put it in the corresponding folder of the machine

Warranty

1. Within seven days from the date of sale, in case of

performance failure, the body and package of the goods must be intact, and the same type of goods can be replaced (subject to inspection), but not including artificial damage

2. The goods are guaranteed for one year from the date of sale, with lifelong maintenance, and the accessories are not covered by the warranty

3. The warranty service is only valid under normal use, and all artificial damages (including self disassembly and improper use) are not covered by the warranty.

4. This card shall be provided during warranty. If this card is not provided or altered without permission, the company has the right to scrap it


Packaging accessories

Color box	machine	USB line	instru ctions	certif icate	wireless handle	receiver	HDMI extension cable
*1	*1	*1	*1	*1	*2	*1	*1

Product warranty card

User name		Gender		Age	
-----------	--	--------	--	-----	--

mailing address			
contact number		Zip code	
Place of purchase			
Date of purchase		Sales Order No	
Product name and specification		Serial No	
Dealer signature		User signature	

WARNING

WARNING

Asphyxiation hazard-all packaging materials(such as duct tape plastic bags, plastic film, binding wires, labels) and small accessories in the machine should not be exposed to children under 3 years of age to avoid suffocation hazards and should be used under adult supervision

When the ambient temperature is less than or equal to 0 °C, the machine shall be moved indoors and placed at room temperature for 2 hours before use

Warning Statement

This device complies with part 15 of the FCC Rules. Operation is subject to the following two conditions: (1) This device may not cause harmful interference, and (2) this device must accept any interference received, including interference that may cause undesired operation.

Any Changes or modifications not expressly approved by the party responsible for compliance could void the user's authority to operate the equipment.

Note: This equipment has been tested and found to comply with the limits for a Class B digital device, pursuant to part 15 of the FCC Rules. These limits are designed to provide reasonable protection against harmful interference in a residential installation. This equipment generates uses and can radiate radio frequency energy and, if not installed and used in accordance with the instructions, may cause harmful interference to radio communications. However, there is no guarantee that interference will not occur in a particular installation. If this equipment does cause harmful interference to radio or television reception, which can be determined by turning the equipment off and on, the user is encouraged to try to correct the interference by one or more of the following measures:

- Reorient or relocate the receiving antenna.
- Increase the separation between the equipment and receiver.
- Connect the equipment into an outlet on a circuit different from that to which the receiver is connected.
- Consult the dealer or an experienced radio/TV technician for help.