

HD wifi security camera
Quick Start Guide

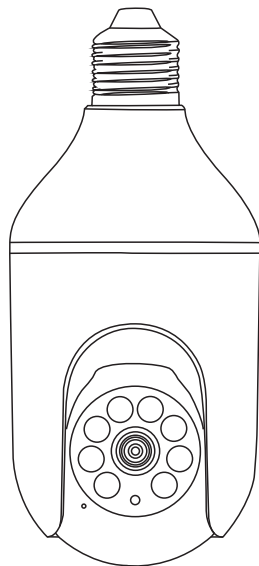


TABLE OF CONTENTS

01 What's Included P01

02 Product overview P01

03 App installation and Setup P02

04 Register an account P03

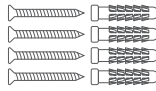
05 Set up WiFi for the camera P04-09

06 FAQ P10

What's Included



Camera

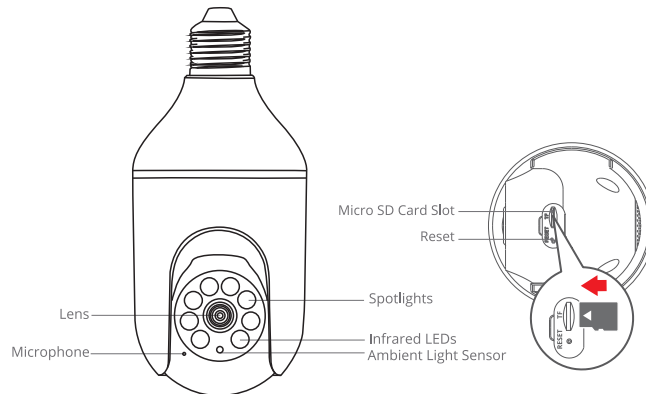


Screw Pack



User Manual

Product overview



CAUTION: Please insert the Micro SD Card according to the direction shown in the diagram. Micro SD Card might JAM if inserted incorrectly and device could be damaged.

SD Card Port: Support micro SD card for local storage (Max 128GB).

Reset button: Used to restore the camera to factory settings (Press and hold on 5-8s).

Card capacity requirements: 8-128GB.

Read and write speed requirements: class10 level.

File format: FAT32.

ANRAN App installation and Setup

Search "ANRAN" on apple store or google play to download the app.

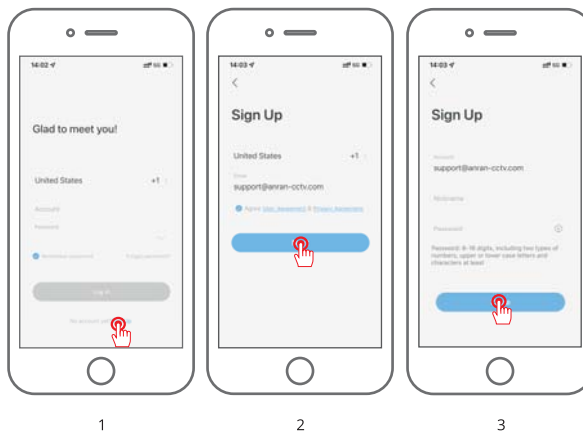
- from Google Play
- from Apple Store
- or Scan the following QR code



Download App(IOS & android)

Register an account

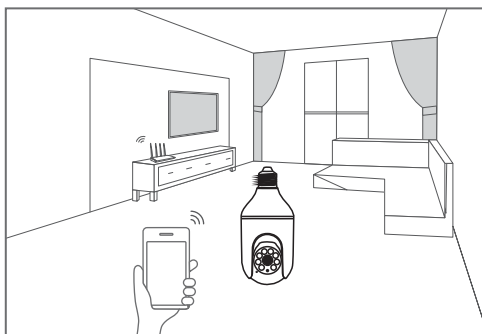
1. Open the APP to sign up an account. Go to the login interface, and click "Sign Up".
2. Sign up with your email address, and click "Next".
3. Set up an "Nickname" and "Password" for your APP, click "Done" to complete.



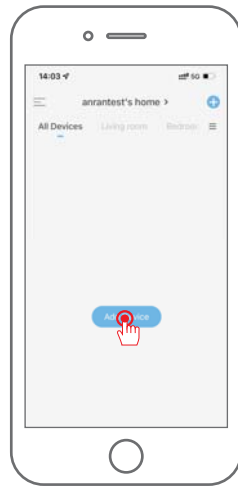
Set up WiFi for the camera

1. Put both of your mobile phone and camera near the router, and the distance should be within a 5 meters distance.

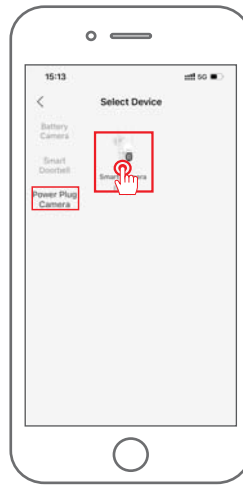
Note: wifi camera can only connect to 2.4 Ghz WiFi signal, Do not support 5Ghz WiFi. Therefore, it only needs to connect to the WiFi signal of the family in 2.4GHz frequency band for normal use.



2. Log in to "ANRAN", then tap the "+" icon in the center. Tap "Smart Camera" to add device.



2-1

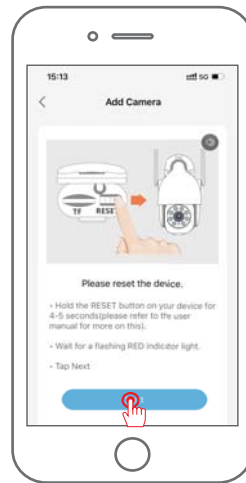


2-2

3. Reset the device and wait for a flashing RED indicator light, then tap "Next".

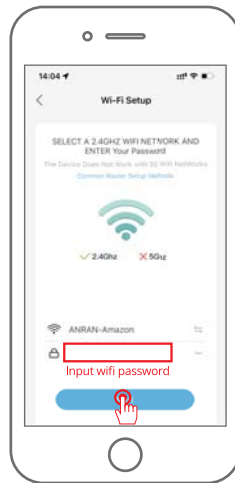


3-1



3-2

4. Selecting the Wi-Fi the device needs to connected with (your home Wi-Fi), input the password and click "Next".



4-1



4-2

5. Using the device to scan the QR code on the mobile phone according to the operation the figure shows, then proceed to the next step after hearing the prompt tone.



5-1

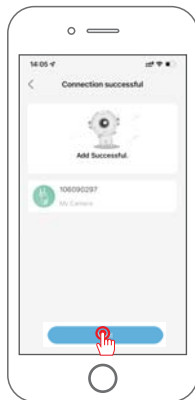


5-2

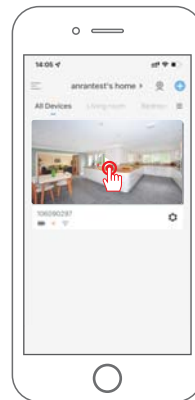
6. After the network configuration is successful, set the name and password for the device to add successfully; then you can view the camera screen in real time.



6-1



6-2



6-3

FAQ

Q: The device prompts offline?

A: • Check whether the equipment is in the power-on state.

- Check whether the Wi-Fi network is in good condition and restart the router.
- If the device is located far away from the router, which results in the inability to obtain a good Wi-Fi signal, it is recommended to move the router to a closer place or add a Wi-Fi amplifier to improve the Wi-Fi performance of the home.
- Delete the camera from your ANRAN account and add it again after resetting the device.
- Check whether the device firmware and application program are the latest version.

Q: Why is it still in the list of devices after resetting?

A: The reset device only resets the network configuration of the camera, but cannot change the configuration on the App, remove the camera, and must be deleted by the App.

Q: How to cut the camera network to another router?

A: First remove and reset the device on the App and then configure the device again by the App.

Q: Why doesn't the device identify the SD card?

A: It is recommended to plug in SD card after power cut. Confirm whether the SD card is normally available and the format is FAT32. And the TF card can't be identified when the internet environment is not good.

Q: Why I can't get the notifications with my cell phone App?

A: Please confirm that the App has been running on the phone, and the relevant reminder function has been opened; Message notification and authority confirmation in the mobile phone system have been opened.

FCC Warning

This device complies with part 15 of the FCC Rules. Operation is subject to the following two conditions:(1) This device may not cause harmful interference, and (2) this device must accept any interference received, including interference that may cause undesired operation.

Any Changes or modifications not expressly approved by the party responsible for compliance could void the user's authority to operate the equipment.

This equipment has been tested and found to comply with the limits for a Class B digital device, pursuant to part 15 of the FCC Rules. These limits are designed to provide reasonable protection against harmful interference in a residential installation. This equipment generates uses and can radiate radio frequency energy and, if not installed and used in accordance with the instructions, may cause harmful interference to radio communications. However, there is no guarantee that interference will not occur in a particular installation. If this equipment does cause harmful interference to radio or television reception, which can be determined by turning the equipment off and on, the user is encouraged to try to correct the interference by one or more of the following measures:

- Reorient or relocate the receiving antenna.
- Increase the separation between the equipment and receiver.
- Connect the equipment into an outlet on a circuit different from that to which the receiver is connected.
- Consult the dealer or an experienced radio/TV technician for help.

FCC RF exposure statement:

The equipment complies with FCC radiation exposure limits set forth for an uncontrolled environment. This equipment should be installed and operated with minimum distance between 20cm the radiator your body.

Contact us

 www.anran-cctv.com

 support@anran-cctv.com