

Wireless Joy Pad Controller for Switch

Model:5078



User Manual

Product Overview

- 1.This product is mainly used for Switch game consoles, the RGB lights are assigned to the controller through the console, the controller have motor vibration and Six-axis sensing function, and support wired and Bluetooth.
- 2.The controller with TURBO and mapping functions .
- 3.The controllers consist of 28 buttons and 2 high precision 3D.
The left controller is made by TURBO,MACRO、UP、DOWN、LEFT,RIGHT、-, screenshot, SL, SR, SYNC, L, ZL, L3,Left analogue stick. The right controller is made up by TURBO,MACRO、A, B, X, Y, R, ZR, R3、+, HOME, SL, SR, SYNC, Right analogue stick.
- 4.HOME button with awake-up the Switch Console function.



-1-

Operation Instructions

1.SW console settings

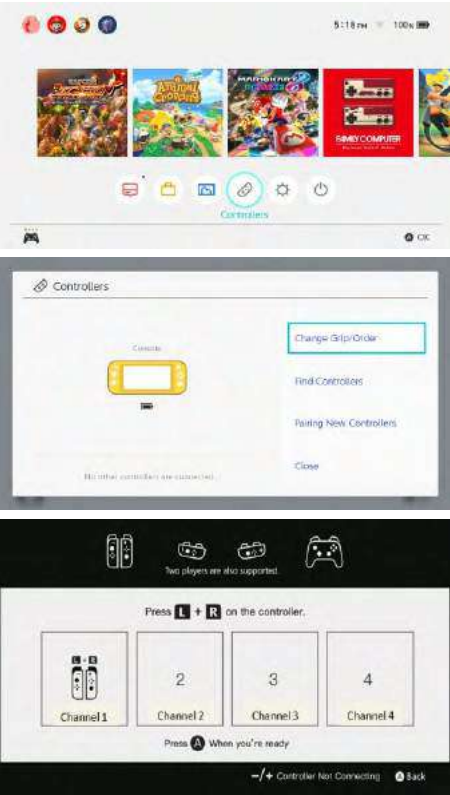
Turn on the SW console, click "System settings"-->"Airplane Mode" , then make "Airplane Mode" turn on → make "Controller Connection (BT wireless) "turn on.



-2-

2.Pairing with the SW console via BT wireless

(1).Turn on the home screen of the console , click "controllers" -->"change grip/order", enter the page as shown below:



-3-

- (2).Long Press the controller (Right or Left) SYNC button for 3 seconds, and the LED light will quickly light up and enter the pairing.
- (3)After successful pairing, simultaneously press L+R or SL+SR to choose the playing mode, click Back to the Controllers menu and select "Close" returning to the homepage, then start game playing.
- (4) After the 1st successful pairing, the next time use it, just awake up the game controller by pressing any button of the controller, it will automatically connect with the game console.(Note: Please don't touch the analogue stick during the process of 1st pairing and re-connection.)

3.SW console via wired connection

Hang the slide rail of the controller on the main machine,direct for wired connection . Remove the controller and sw to BT wireless automatically.

4.Turbo and MACRO functions instructions

Turbo Function

- a. Press the Turbo button while holding down any action button (UP、DOWN、LEFT、RIGHT、ZL、L、A、B、X、Y、ZR、R) you want to set to Turbo mode."+" and "-" cannot be set to Turbo mode.
- b. Press Turbo + UP、DOWN、LEFT、RIGHT、ZL、L、A、B、X、Y、ZR、R for automatic Turbo function
- c. To turn OFF Turbo mode,press the Turbo button while holding down the action button you previously set to Turbo Mode. If there isn't turbo function,the turbo LED will not light up.
- d. Long press Turbo button for 5 seconds to clear all Turbo button functions
- e. To change the Turbo mode speed,press UP or DOWN on the RIGHT ANALOG STICK while holding down the TURBO button.Up raises the speed.DOWN lowers the speed.

MACRO Function

- a.Long press the MACRO button for 3 seconds,and when the MACRO LED slowly flashes, without holding down the MACRO button to enter the MACRO definition function. You can define the combination of different buttons (ZL+L+UP or ZL+UP+DOWN+LEFT functions),but can only keep one of them .
- b.To clear the MACRO, hold down the MACRO button until the MACRO LED blinks quickly,then let go without holding down the MACRO button. The MACRO LED is off, indicating that cleanup was successful.

-4-

c.MACRO buttons function :

Left controller: UP、DOWN、LEFT、RIGHT、ZL、L

Right controller: A、B、X、Y、ZR、R

Noted : Turbo function doesn't save after shutdown,MACRO function shut down and save the previous state.

5Automatic back even

When the controller has been paired with the console once and the BT wireless of the console is turned on, any button of the controller can be connected back after a short wake-up time in the sleep state (except the 3D press button, Turbo and Macro). Be careful not to touch the 3D joystick during the connecting process.

6.Controller power-on and charge

(1). Controller pairing:

On the pairing interface of the sw console, long press SYNC button of the controller for 3 seconds until 4 LEDs rapidly flashes in cycle, release your hand. Corresponding LED keeps on after successful pairing.

(2). Awakening up the controller:

In OFF state, press any button of the controller for 1-2 seconds to awake up the controller and 4 LED flash rapidly in cycle.

(3). When using the USB charging ,the 4 led of the controller will light on when fully charged.(When the controllers are charging via the USB cable ,be careful not to connect them to the console to prevent damage .)

(4). Charge the controllers with the two side rails of the console via its original charger.

(5). The controller will automatically enter stand state if pairing fails within 60 seconds.

(6). In working state,short press SYNC button to turn off the controller.

(7). After BT wireless connection, if the controller is not operated for a long time, the controller will automatically shut down and enter the standby state for about 10 minutes.

7.Reset

Restart the controller if the controller is abnormal ,for example the button is abnormal, the handset freezes or cannot be connected.

Reset Mode : Long press HOME button or screenshots button for 10 seconds to reset controller

8.It's supports 7pcs controller to connect with the SW console at a same time.(Note: It depends on the console version).

9.Micro-USB port supports charging and firmware update when necessary.

-5-

LED indicators

1. In OFF state, press any button ((except the 3D press button, Turbo and Macro) of the controller for 1-2 seconds to awake up the controller and 4 LED flash in cycle.
2. On the pairing interface of the sw console, long press SYNC button of the controller for 3 seconds until 4 LED rapidly flashes in cycle, release your hand. Corresponding LED keeps on after successful pairing.
3. In working state, corresponding RGB LED slowly flashes if battery voltage is below 3.5V. The controller automatically shut down if battery voltage is below 3.4V.
4. The controller will automatically shut down if controller Connection (BT wireless) is OFF or sw console is entering into sleep mode.
5. In OFF state, charge the controller by a USB cable, 4 LED slowly flash and keep ON after full charging.
6. In working state, charge the controller by a USB cable, corresponding RGB LED slowly flashes and it keeps on after full charging.
7. 4pcs controllers are supported to connect with the SW console at a same time and it is divided into 4 RGB LED. Each RGB LED supports connection of one Left controller and one Right controller.
LED1 keeps on after each controller successfully pairs with RGB LED 1. LED1+LED2 keep on after each controller successfully pairs with RGB LED 2;LED1+LED2+LED3 keep on after each controller successfully pairs with RGB LED 3;LED1+LED2+LED3+LED4 keep on after each controller successfully pairs with RGB LED 4. RGB LED assignment as the picture below:



-6-

Electrical Parameters

1. Working current : ≤30MA .
2. Working current : ≤80MA .
3. Static current during power-off : ≤20uA .
4. Charging current : ≤200MA MAX.
5. Charging voltage : DC 5V
6. Battery capacity : 350mAh /pc
7. Operating distance: 8-10m
8. working time : 4-6 hours
9. Standby period : Around 6 months
10. Charging time : 2-5 hours

FAQ

Q : Why does the BT wireless connection fail?

A : Too many controllers are connecting with the game console, remove all controllers and restart.

Q : Why the controller is not power on?

A : The controller is in low power, please charge the controller by an 5V adapter via a USB cable. Try to power on again after full charging.

Q : Why does the analogue sticks automatically move?

A: Please don't touch the analogue stick during the process of 1st pairing and re-connection until corresponding LED keeps on.

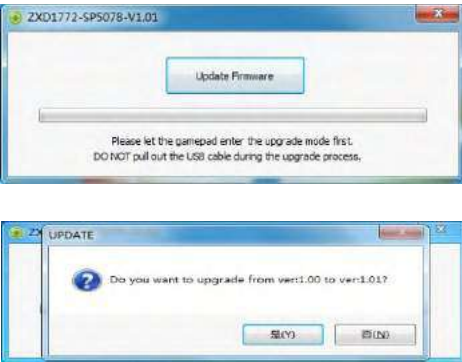
Driver Update

- 1.Due to the SW console system upgrade some functions of the controller are unavailable or the controller functions need to be updated , upgrade the firmware of the controller via PC . Double-click the upgrade program as shown in "2021-04-09-ZXD1772-SP5078 - V1.01.exe" (The program date and vx. x version number are for reference only), as follows:

-7-

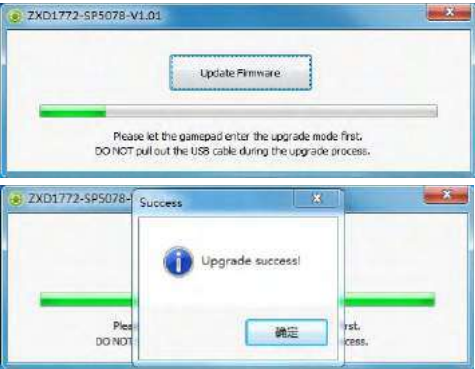


2.Controller is in standby state, long press the ' 3D ' button (Left or Right) controller and connect the controller with PC via TYPE-C cable , after connecting and release 3D (left or right) . At this time "Update Firmware" changes from gray to black, indicating that the connection is successful. Click "Update Firmware" to upgrade (there will be a prompt dialog box for the program version, you can click 是). The upgrade is shown as follows:



-8-

- 3.During the upgrade, keep the data cable connection stable and complete the the upgrade after a few seconds. The following picture will be displayed after the upgrade:



- 4.If the program of the same version cannot be upgraded again, a prompt interface will appear, indicating that it cannot be upgraded, as shown in the following figure:



This equipment has been tested and found to comply with the limits for a Class B digital device, pursuant to part 15 of the FCC Rules. These limits are designed to provide reasonable protection against harmful interference in a residential installation. This equipment generates, uses and can radiate radio frequency energy and, if not installed and used in accordance with the instructions, may cause harmful interference to radio communications. However, there is no guarantee that interference will not occur in a particular installation. If this equipment does cause harmful interference to radio or television reception, which can be determined by turning the equipment off and on, the user is encouraged to try to correct the interference by one or more of the following measures:

- Reorient or relocate the receiving antenna.
- Increase the separation between the equipment and receiver.
- Connect the equipment into an outlet on a circuit different from that to which the receiver is connected.
- Consult the dealer or an experienced radio/TV technician for help.

Caution: Any changes or modifications to this device not explicitly approved by manufacturer could void your authority to operate this equipment.

This device complies with part 15 of the FCC Rules. Operation is subject to the following two conditions: (1) This device may not cause harmful interference, and (2) this device must accept any interference received, including interference that may cause undesired operation.

The device has been evaluated to meet general RF exposure requirement.