

Gateway Antenna Installation and Users Manual

Rev 1
13/05/2021

Introduction

The Vantage Gateway Antenna is used in conjunction with the Vantage Bluetooth Low Energy reader (aka SmartTrack). The Gateway Antenna receives signals from BLE beacons and then sends them to the SmartTrack. The reader interprets the signals and passes these along with timestamps to the main Vantage on-site server.

Connecting the Gateway Antenna to the SmartTrack

Connecting the Gateway Antenna to the SmartTrack is easy. A single connection is made from the back of the Gateway Antenna (through the gland on the bottom and via the removable panel) to the SmartTrack. It is important to wire the SmartTrack device first and then run the wiring to the Gateway Antenna. This is due to the USB-A connector's inability to slide through the waterproof gland on the bottom of the SmartTrack device.

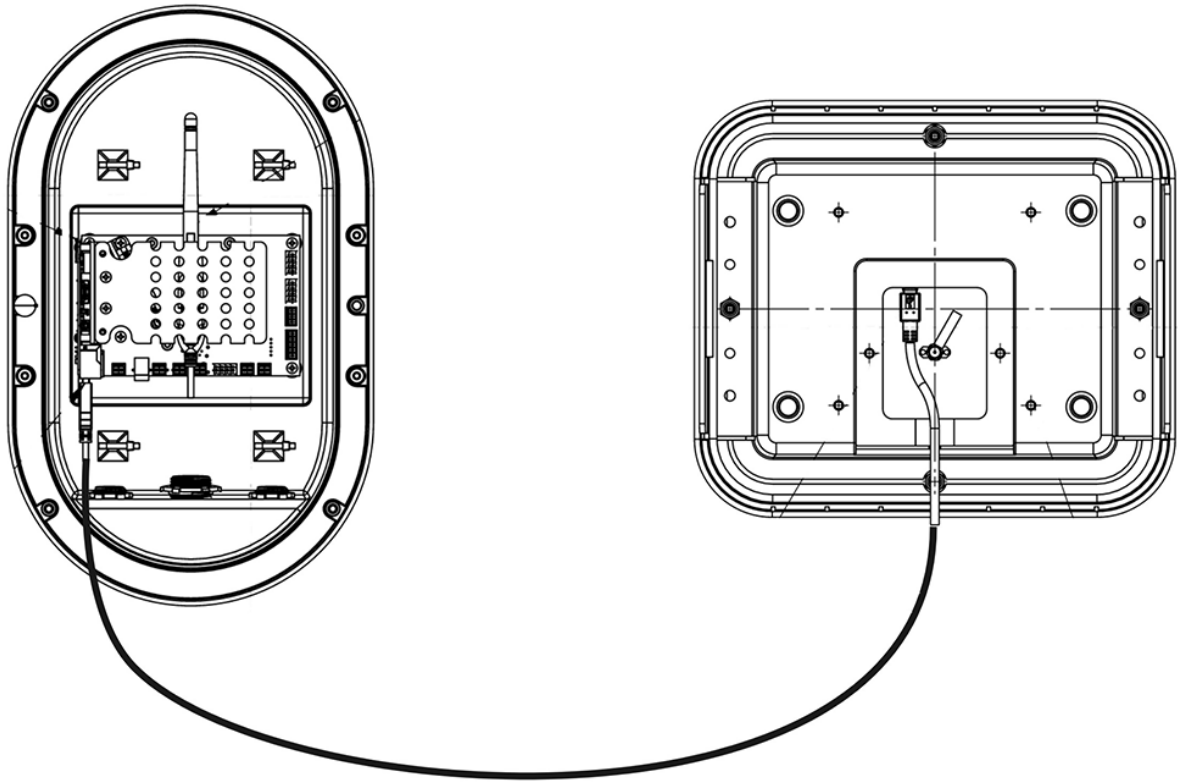


Fig 1. Connection diagram

Remove the face of the SmartTrack and connect the cable with the USB-A connector to the USB port on the SBC (single-board-computer).

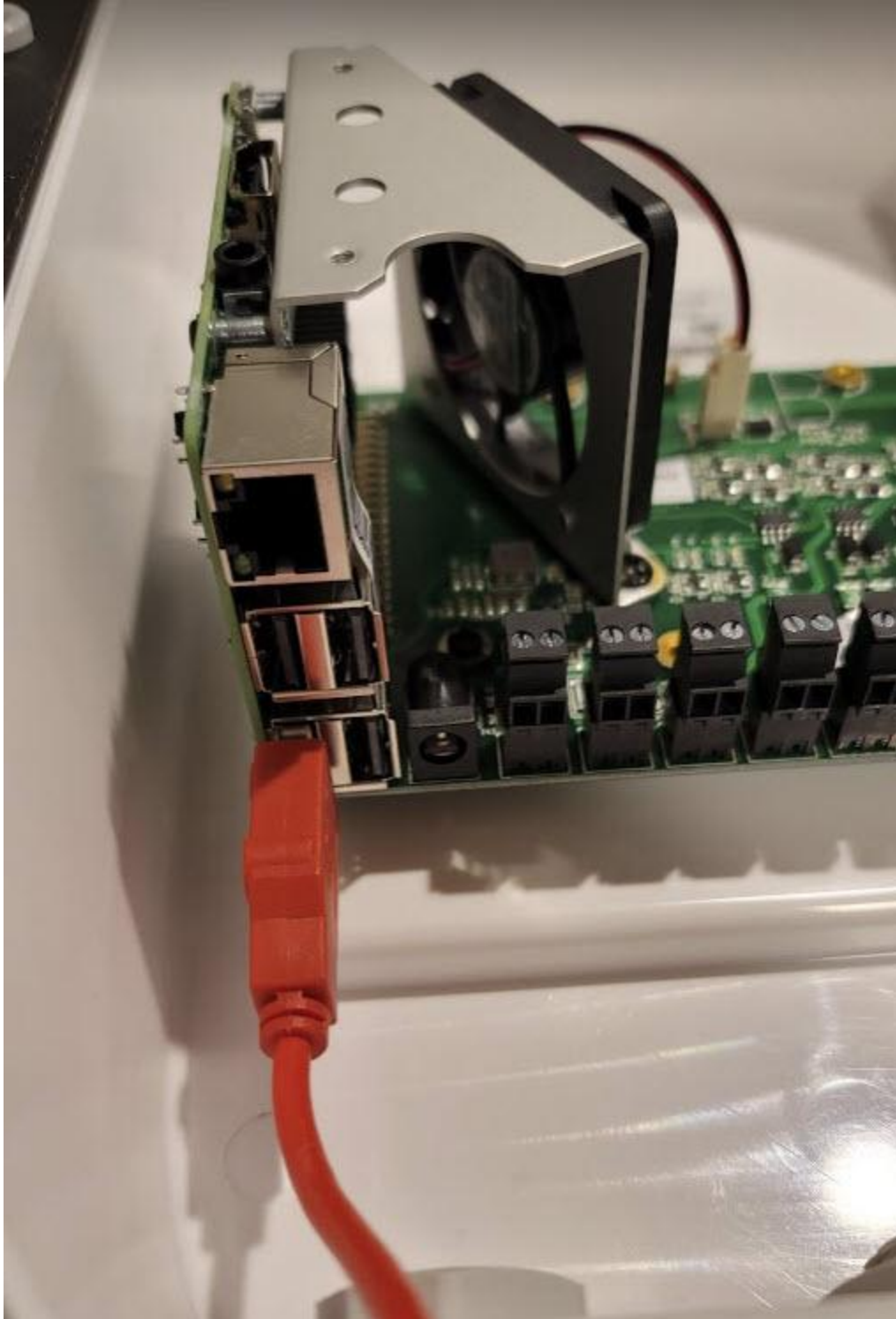


Fig 2. USB-A Connected to SBC

Next, run the cable with the USB Mini connector from the inside of the SmartTrack through the waterproof gland.

VANTAGE
Model: Vantage SmartTrack
P/N: 05-0046
S/N: AVT4620310275
FC
Made in Taiwan

HDMI POWER_5V

SVT00010MD
K24

Prog_Title
PROG_REV1

S/N: AVT4620310275



Fig 3. Cable running through gland with USB Mini

Now, open the access panel on the back of the Gateway Antenna. Push the USB Mini connector through the waterproof gland on the Gateway Antenna and connect it to the USB female connector on the antenna.



Fig 4. Usb Mini connected to PCB in Gateway Antenna

Finally, close up the access panel and ensure a tight fit to keep water out of the antenna

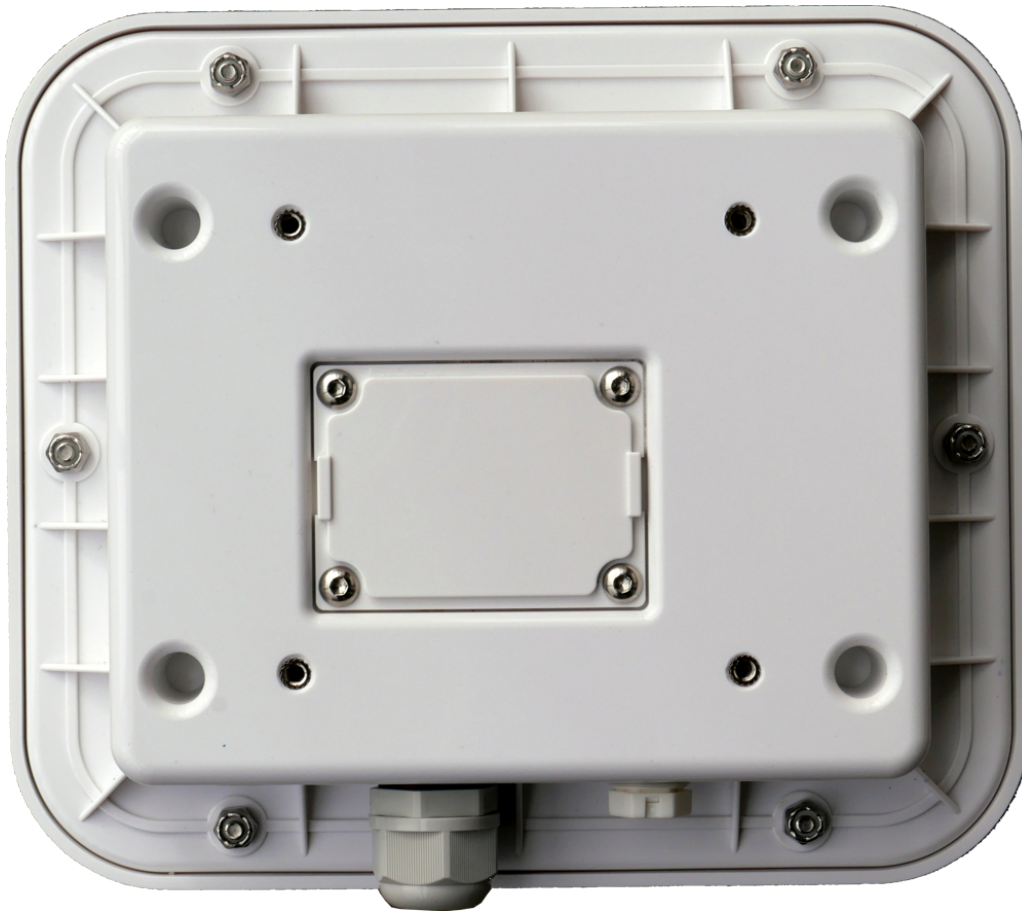


Fig 5. Closed Access Panel in back of Gateway Antenna

Operations

Operation is automatic. No changes need to be made to the SmartTrack or the Gateway Antenna for it to work. The firmware that is pre-loaded on the SmartTrack already accepts the incoming signals from the Gateway Antenna.

FCC Part 15.21 information for user

You are cautioned that changes or modifications not expressly approved by the party responsible for compliance could void your authority to operate the equipment.

FCC Part 15.19

This device complies with Part 15 of the FCC Rules. Operation is subject to the following two conditions: (1) this device may not cause harmful interference and (2) this device must accept any interference received, including interference that may cause undesired operation