

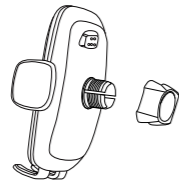
APPS@QR

Wireless Car Charger Mount

Owner Manual

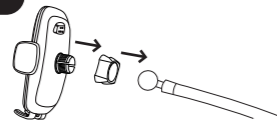
IMPORTANT ! Life-Time Warranty!
IF YOU NEED ASSISTANCE OR REPLACEMENT PARTS
EMAIL US: support@wiiki-tech.net

STEP 1



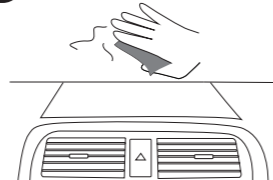
Unscrew the nut from the phone charger.

STEP 2



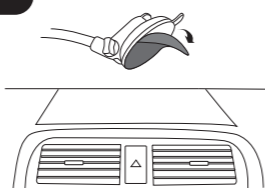
Put the nut through the ball joint of the gooseneck. Push the ball joint onto the phone cradle. Tighten the screw nut to finish the holder installation.

STEP 3



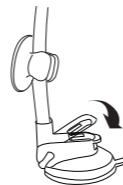
Choose the flat area and clean the surface.

STEP 4



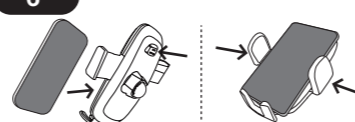
Tear off the protective film.

STEP 5



Press the holder and push the lock lever down to lock the phone holder.

STEP 6



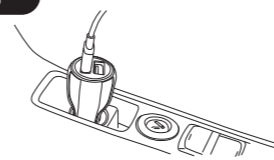
Press the button behind the holder to release the arm automatically. Put you phone in. Squeeze the arms until it holds.

STEP 7



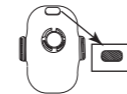
Plug the Type C Cable (include in package) into the charging port on bottom of cradle.

STEP 8



Plug the QC 3.0 adapter into the car. Make sure it is connect power. Finish!

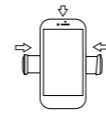
! INSTRUCTIONS



Step 1
Quick Release Button
Press the button behind the holder to release the arm.



Step 2
Press the quick release button on the back of the phone holder to open both arms.



Step 3
Put in the cell phone, then squeeze the arms until it holds. Make sure you rest the phone flat against the holder completely.

*Wireless Charging Status Indicator

Indicator Color	Status
Red-light Bright	Metal obstruction detected
Blue-light Flickers	Actively charging a device
Blue-light Bright	Finished the charging

★ ★ ★ ★ ★

Love Your APPS@QR Mount?

Shout it out and let more people hear your voice!

LIFE TIME WARRANTY

Having Issues?

Our Customer Service Team is waiting to assist you!
Please reach out to us at

support@wiiki-tech.net

APPS@QR

★ ★ ★ ★ ★

WE WILL RESOLVE ALL ISSUES
IN YOUR FAVOR, EVEN YEARS
AFTER YOUR PURCHASE

★ ★ ★ ★ ★

85MM

55MM

FCC WARNING

This device complies with part 15 of the FCC Rules. Operation is subject to the following two conditions: (1) this device may not cause harmful interference, and (2) this device must accept any interference received, including interference that may cause undesired operation.

Any changes or modifications not expressly approved by the party responsible for compliance could void the user's authority to operate the equipment.

NOTE: This equipment has been tested and found to comply with the limits for a Class B digital device, pursuant to Part 15 of the FCC Rules. These limits are designed to provide reasonable protection against harmful interference in a residential installation. This equipment generates, uses and can radiate radio frequency energy and, if not installed and used in accordance with the instructions, may cause harmful interference to radio communications.

However, there is no guarantee that interference will not occur in a particular installation.

If this equipment does cause harmful interference to radio or television reception, which can be determined by turning the equipment off and on, the user is encouraged to try to correct the interference by one or more of the following measures:

- Reorient or relocate the receiving antenna.
- Increase the separation between the equipment and receiver.
- Connect the equipment into an outlet on a circuit different from that to which the receiver is connected.
- Consult the dealer or an experienced radio/TV technician for help.

To maintain compliance with FCC's RF Exposure guidelines, This equipment should be installed and operated with minimum distance between 20cm the radiator your body: Use only the supplied antenna.