

User Manual

It's a great honor that our hiup "smart pad" child safety seat can accompany your child safely through a new stage in his or her life. To ensure the safety of your child, please install and use the smart pad correctly as described in this manual. If you have any questions about use, please feel free to contact us.

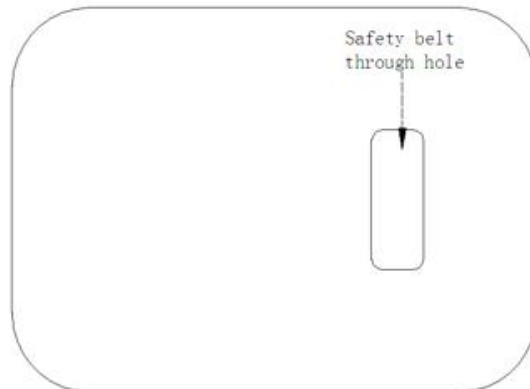
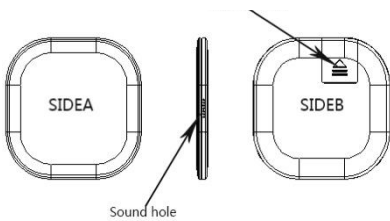
SAFETY INSTRUCTIONS

Please read this manual carefully, otherwise improper installation may cause injury. In this case, the manufacturer will not be liable.

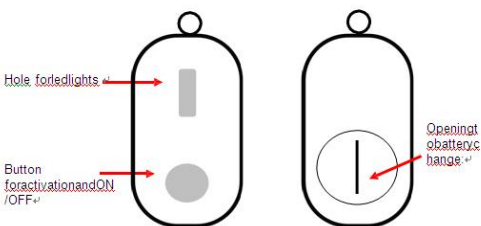
1. This "smart pad" is suitable for children's weight of 6kg-25kg
2. This "smart pad" is positioned and fixed by a three-point seat belt through the middle aperture.
3. The safety belt cannot be used without passing through the "smart pad" aperture.
4. Make sure that the seat belt buckle is locked correctly, in case of emergency, the child can be released quickly.
5. "Smart pad" should be kept away from corrosive substances.
6. If you have any questions about the use and installation of "smart pad" app, please call the company service hotline.

COMPONENTS

PAD StyleCushion Style



Keychain



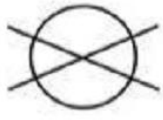
CLEANING AND MAINTENANCE

Washing instructions: do not disassemble, do not clean, only dry by

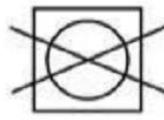


airing

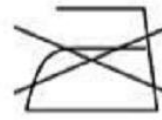
Non bleaching



Non dry cleaning



Non spin-dry



No ironing

Caution:

"Smart pad" internal pressure sensor and circuit board components are not waterproof, please do not soak or soak in water.

APP OPERATION INSTRUCTIONS

APP Introduction

- Search and download "Hiup" from app store or Android
- Register in the login interface according to the instructions
- Login
- add device: Smart pad, Keychain as below

Bind New Device

Please turn on the device and bring it closer to the phone

Phone Bluetooth is Enable

Android phone using Bluetooth requires you to allow location permission



Device Found:
DeviceName: hiup Device
DeviceID: FF:00:BB:CA:DD:FF

Bind and connet this device

Please turn on the device and bring it closer to the phone

Phone BT NOT ENABLE

Please turn on the device and bring it closer to the phone

Phone Bluetooth is not Enable

Android phone using Bluetooth requires you to allow location permission



Please Turn On Phone Bluetooth

Please turn on the device and bring it closer to the phone

DEVICE RESET

Do nothing, return

WARNING

This will reset the device and disconnect all phones and keychains



Please proceed with caution


I want to reset the device

This will reset the device and disconnect all phones and keychains

RING PAIR

Do nothing, return

Please turn on the Ring and bring it closer to the phone



Pad is Pairing

Please trun ring and Connect it

New key is Paired, Back

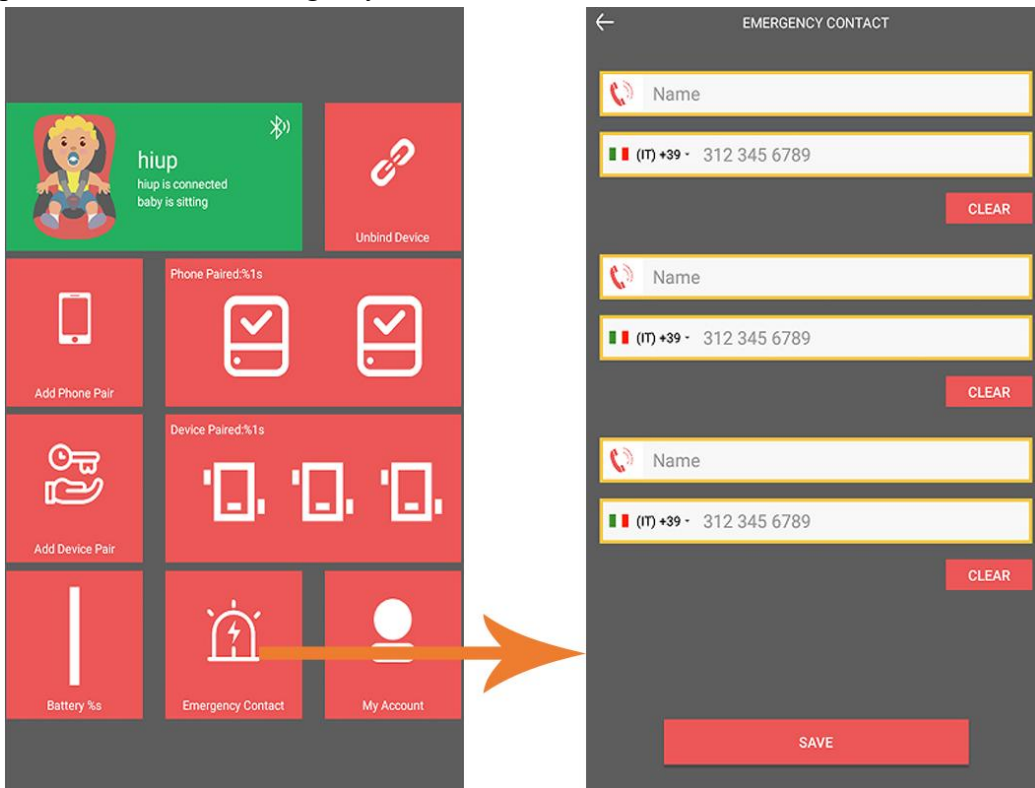
Please turn on the Ring and bring it closer to the phone

e: Add 3 emergency numbers and enable 3 emergency numbers

How it works

Set emergency numbers.

They will receive an alert SMS with the car's position in case of emergency



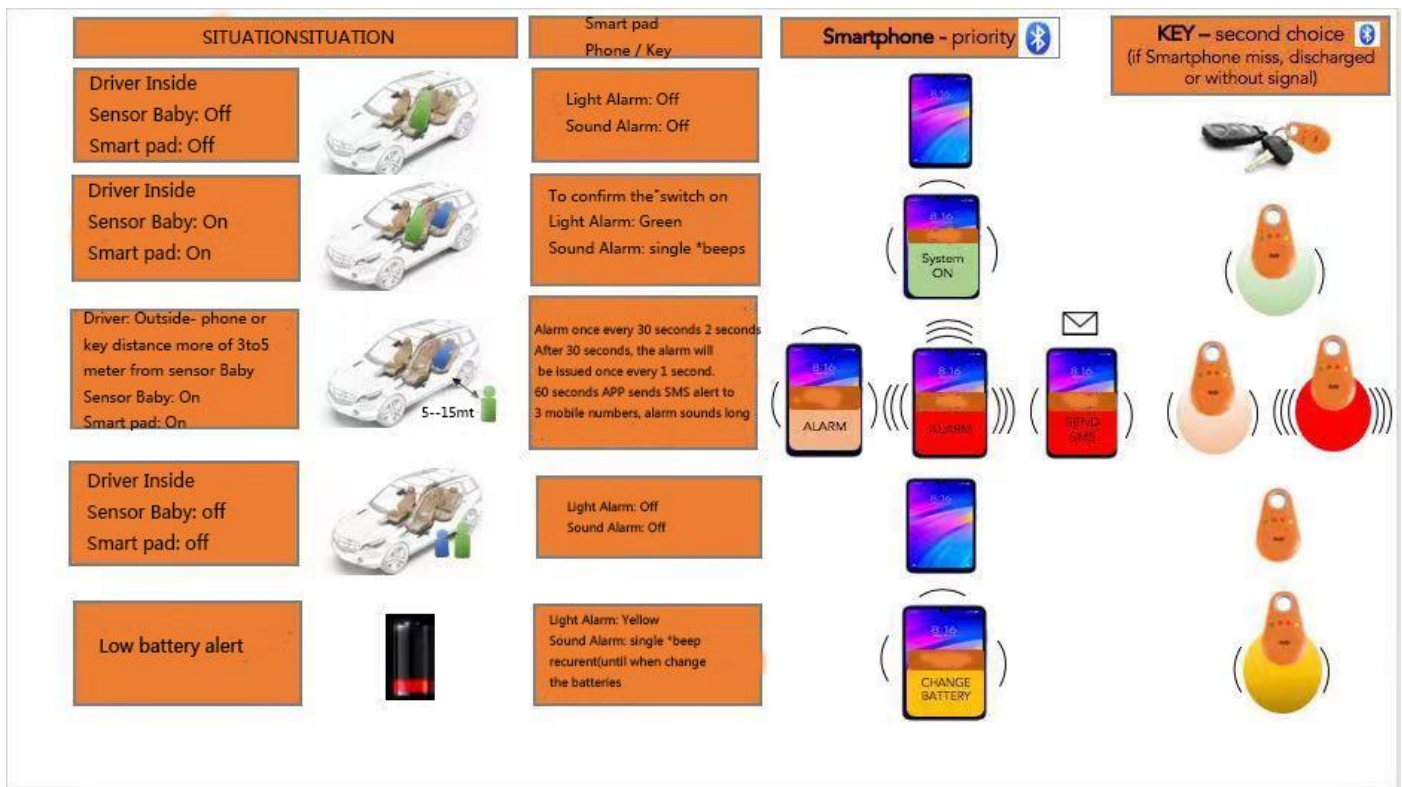
f: Page status management



SPECIFICATION PARAMETER

Product Style	PCBA	BabySeat+remote control
	Dimension	150*150*13.5MM/220mm*300mm*13.5mm
	net weight	About 100g
Battery	Type	Button Battery
	Compacity (Keychain)	3.0V/220mAh (Keychain) CR2032
	Compacity (“Smart pad”)	3.0V/540mAh (cushion) CR3032
	Duration of flight	Standby time: about 5 months, continuous use time: about 2 to 3 months
System Hardware Configuration:		
CPU	Type	FR866 4.2 Low-power BLE Bluetooth chip,
	ROM	78KB SRAM
	SPI Flash	2M
	Frequency	12-4SMhz speed
buzzer	Internal	buzzer *2 A remote control and a host
Sensor	Pressure Sensor	YES
LED	Indicator	YES Remote control supports four-color indicator
Connection		
Bluetooth	4.2	YES, One BabySeat host supports 3PCS remote control, 2PCS mobile phone
I/O Configuration		
Button	Physical button (remote control)	YES,Power (remote control)
Software Configuration		
Type	Item	Description
APP	(APP) Apple Store	
	(APK) Google store	

FUNCTION DESCRIPTION



FCC Statement

1. This device complies with Part 15 of the FCC Rules. Operation is subject to the following two conditions:

- (1) This device may not cause harmful interference.
- (2) This device must accept any interference received, including interference that may cause undesired operation.

2. Changes or modifications not expressly approved by the party responsible for compliance could void the user's authority to operate the equipment.

NOTE:

This equipment has been tested and found to comply with the limits for a Class B digital device, pursuant to Part 15 of the FCC Rules. These limits are designed to provide reasonable protection against harmful interference in a residential installation.

This equipment generates uses and can radiate radio frequency energy and, if not installed and used in accordance with the instructions, may cause harmful interference to radio communications. However, there is no guarantee that interference will not occur in a particular installation. If this equipment does cause harmful interference to radio or television reception, which can be determined by turning the equipment off and on, the user is encouraged to try to correct the interference by one or more of the following measures:

Reorient or relocate the receiving antenna.

Increase the separation between the equipment and receiver.

Connect the equipment into an outlet on a circuit different from that to which the receiver is connected.

Consult the dealer or an experienced radio/TV technician for help.