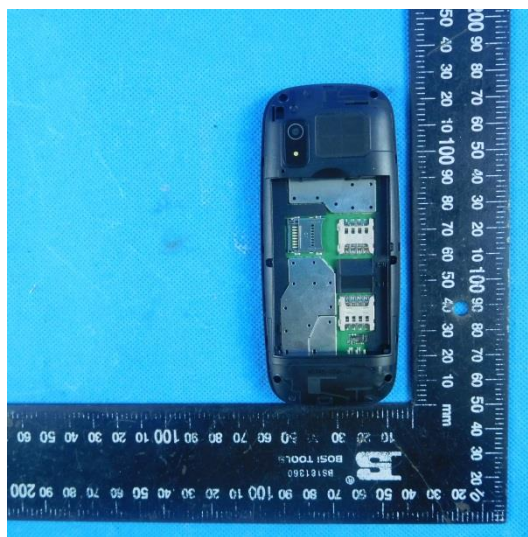
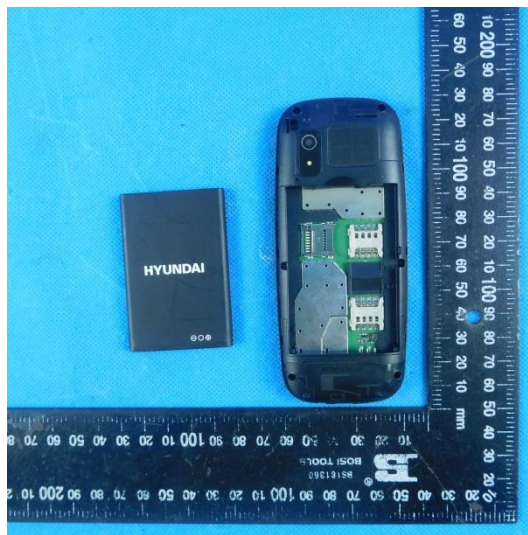
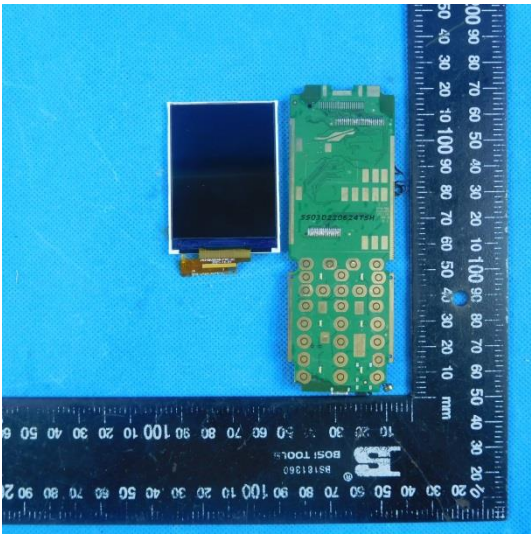
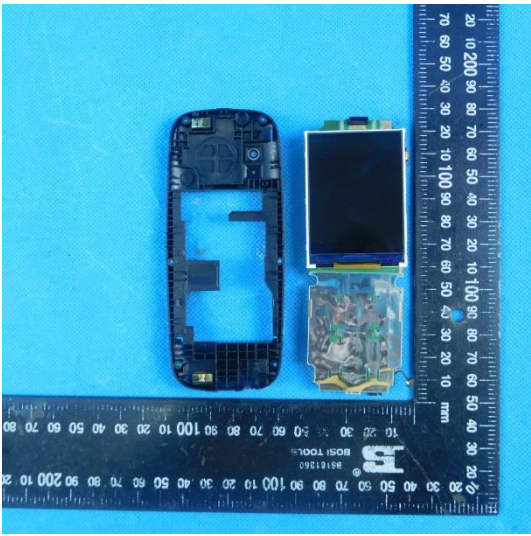
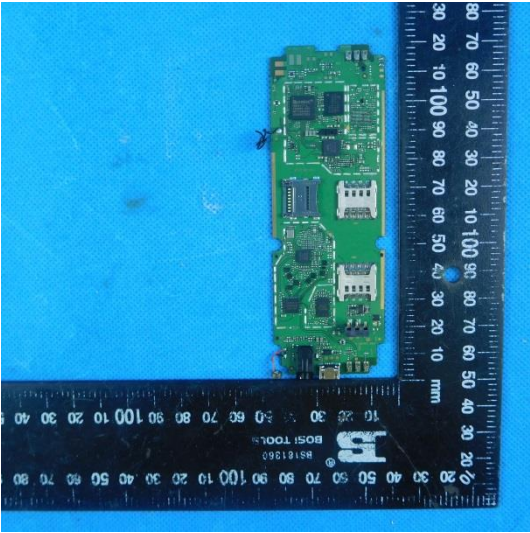
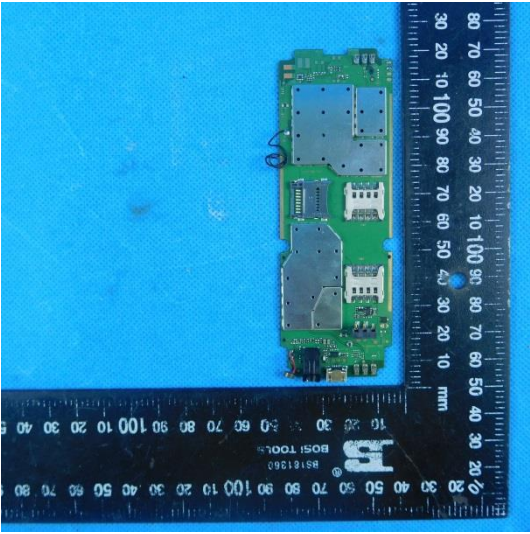
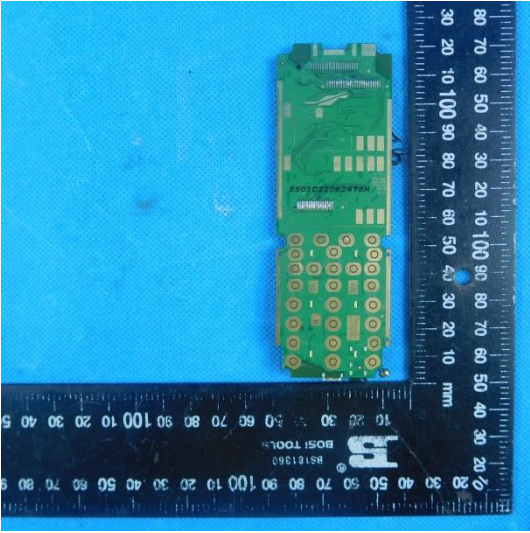
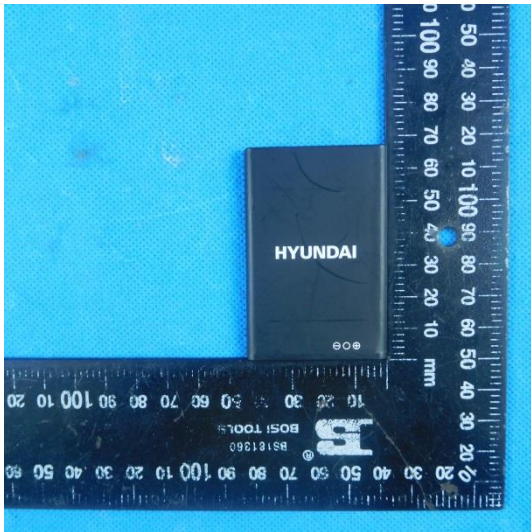
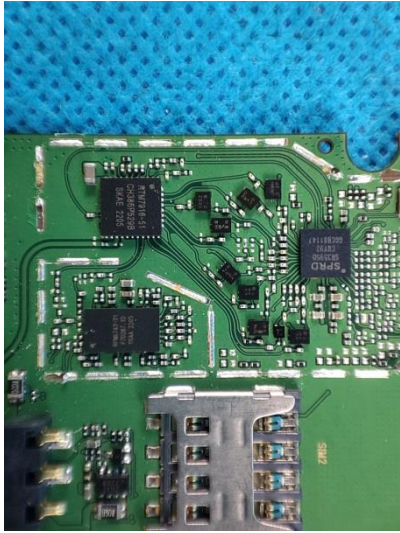


## 7.2. Internal photos









# HYUNDAI

Li-Ion Battery  
Model:HY-300  
Charging Voltage Limited:3.7V  
Rechargeable Li-Ion Battery  
VOL(MIN): 3.7V/1000mAh 3.7Wh  
VOL(TYP): 3.7V/1000mAh 3.7Wh  
Operating Standard:GB 31241-2014  
Production Date:2622  
11CP6/34/50

#### Caution:

- Do not short circuit
- Do not expose the battery to high temperature
- Use specified charger only
- Refer to the provided user manual



**WARNING**  
MAY EXPLODE IF DAMAGED  
OR DISPOSED OF IN FIRE

Made in China

Imported/distributed by DUO AMERICA, LLC  
Licensed by HYUNDAI Corporation Holdings, Korea