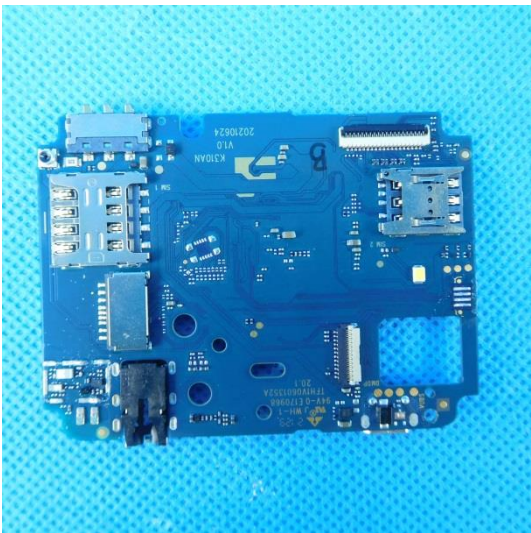
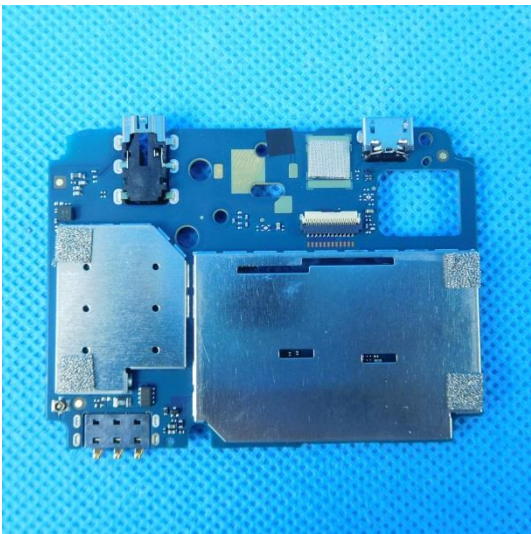
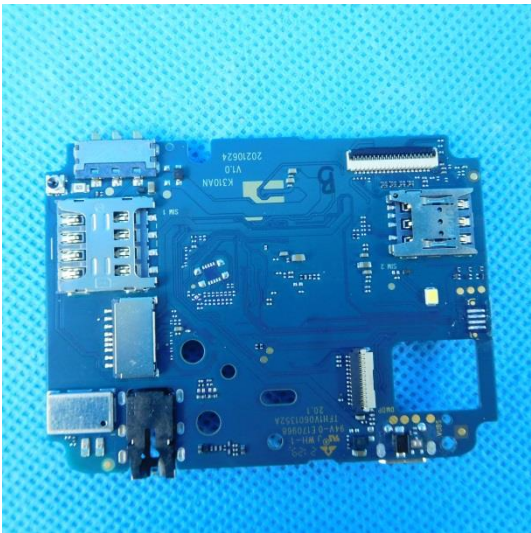
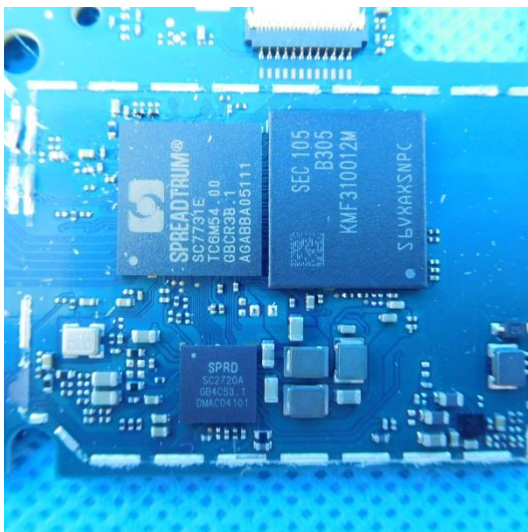
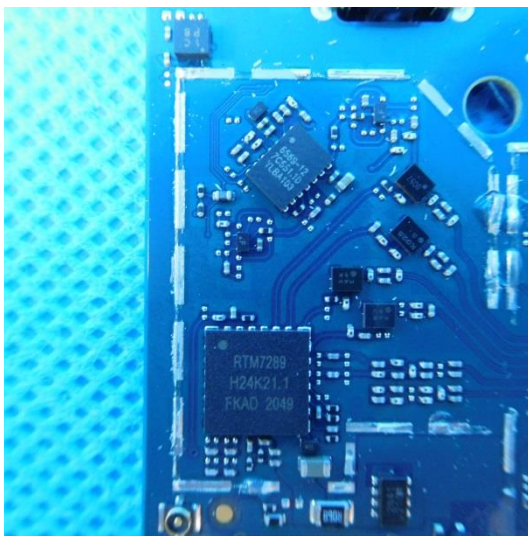
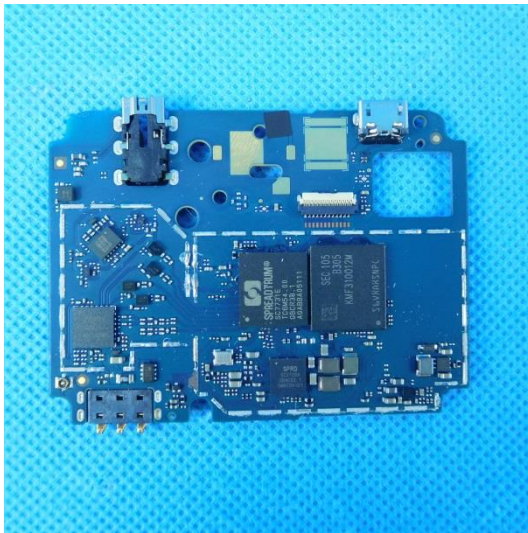


Model:E554

Internal photos of the EUT









HYUNDAI

Li-ion Battery
Model: HY-E506
Charging Voltage Limited: 4.35V
Rechargeable Li-ion Battery
Voltage: 3.8V/2500mAh 9.5Wh
Voltage (Typ): 3.8V/2500mAh 9.5Wh
Operating Standard: GB31241-2014
Production Date: 3021
11CP5/50/73

Caution:
• Do not short circuit
• Do not expose the battery to high temperature
• Use specified charger only
• Refer to the provided user manual



WARNING
MAY EXPLODE IF MISUSED
OR DISPOSED OF IN FIRE

Made in China
Imported/distributed by DUO AMERICA, LLC
Licensed by HYUNDAI Corporation Holdings, Korea