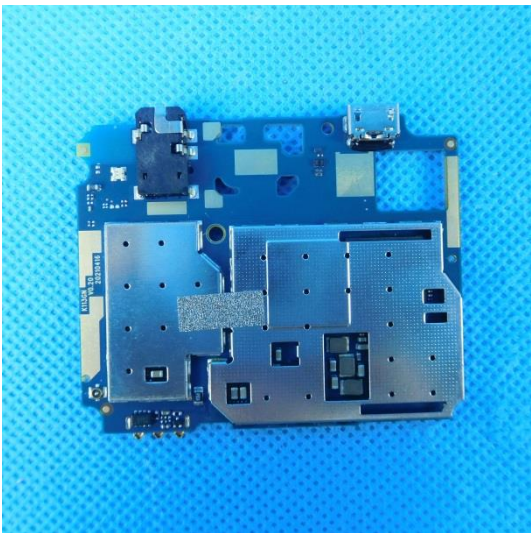
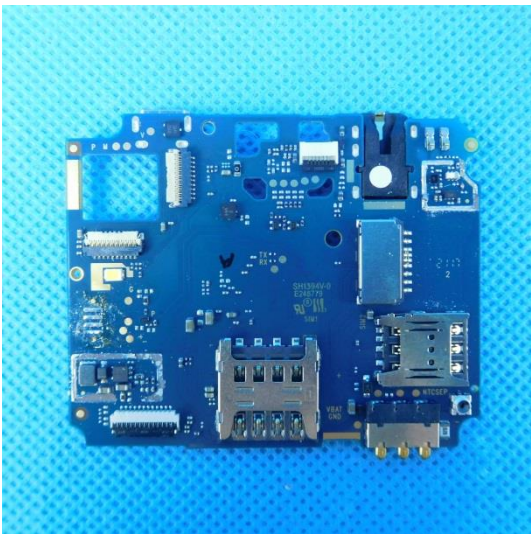
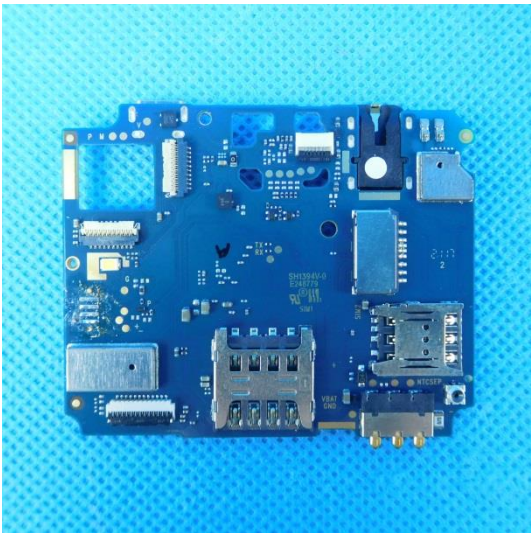
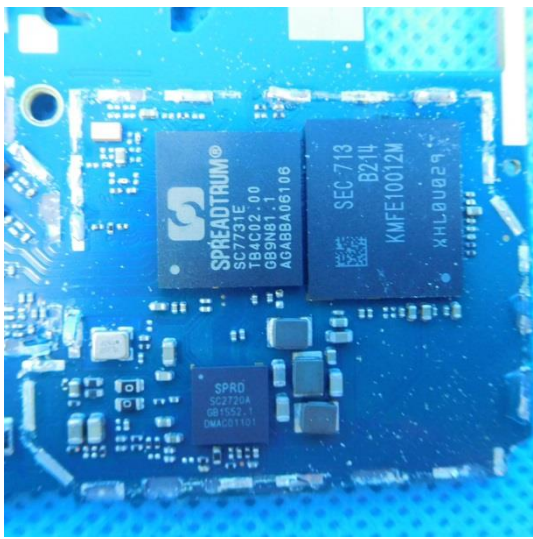
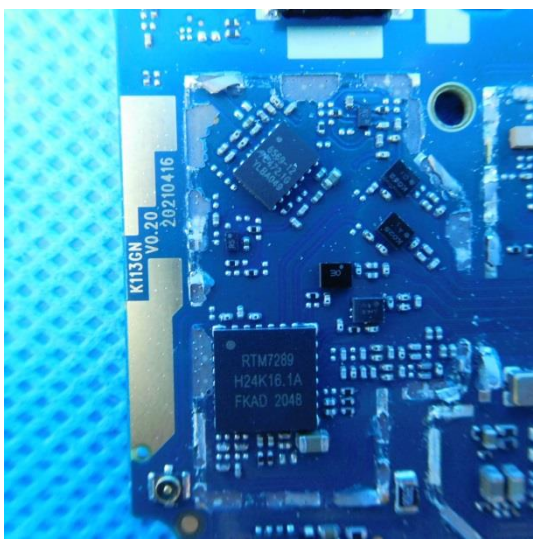
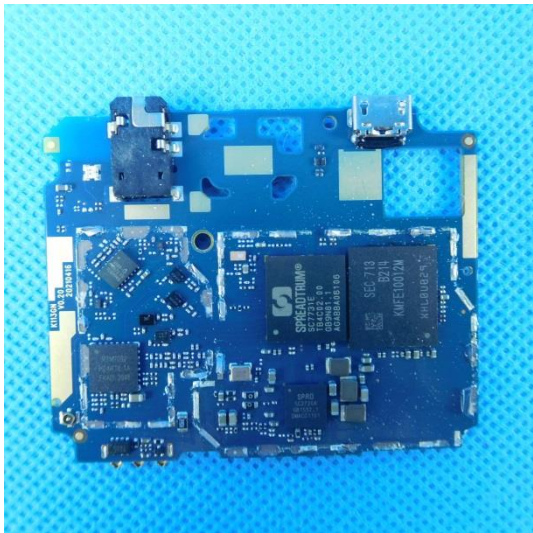


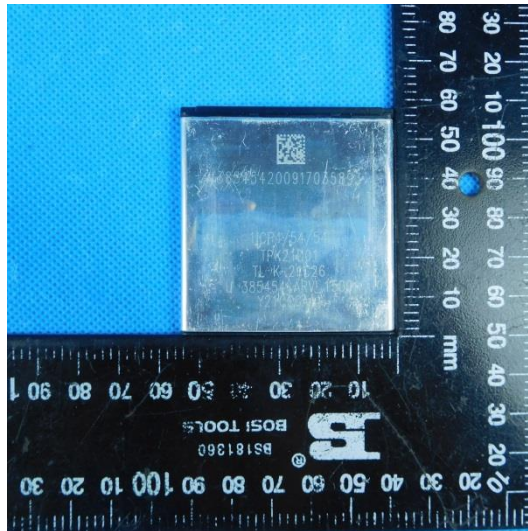
Model:E485

Internal photos of the EUT









HYUNDAI

Li-ion Battery
Model:HY-E485
Charging Voltage Limited:4.35V
Rechargeable Li-ion Battery
Vol(MIN):3.8V/1500mAh 5.7Wh
Vol(TYP):3.8V/1530mAh 5.814Wh
Operating Standard:GB31241-2014
Production Date:2119
1ICP4/54/54

Caution:

- Do not short circuit
- Do not expose the battery to high temperature
- Use specified charger only
- Refer to the provided user manual



Made in China
Imported/distributed by DUO AMERICA, LLC
Licensed by HYUNDAI Corporation Holdings, Korea