

# LED Bluetooth Symphony Controller

## Technical Parameters

Product name	Bluetooth Symphony Controller
Support system	Android 4.4 and above / iOS 11.0 and above
Connection mode	Bluetooth 4.0
Remote control	40-key
Input voltage	DC5V/12V/24V
Instal tips	Please clean the surface before installation.

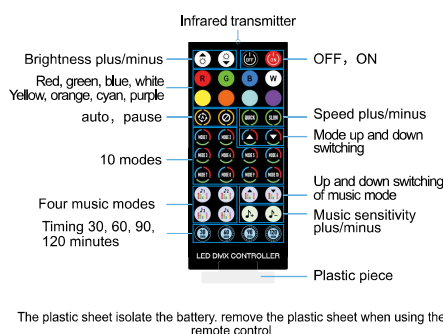
## Product Description

Controller :



Short press:  
mode switch  
Long press:  
on/off

Remote control :



The plastic sheet isolate the battery, remove the plastic sheet when using the remote control

## Download App Software

Please search LED LAMP in major Appcenters, or scan below QR code.



1. Download the "LED LAMP" APP with your mobile phones by scanning the QR code on user manual or search the "LED LAMP" APP in iPhone APP store or Google play store.
2. After the APP are downloaded successfully, you need to turn on Bluetooth function on your phone firstly, then plug in the strip light, then open the APP, your APP will pair with the strip light automatically and you can control it.

☆ Android phones need to open the location function and allow permission

## Unable to Connect Troubleshooting

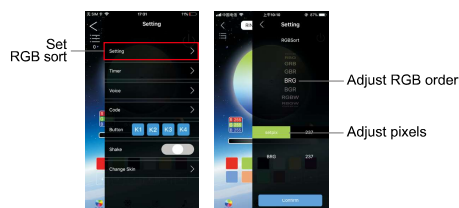
- (1) Check if the power supply of the light strip is normal.
- (2) Check if the Bluetooth is turn on.
- (3) Check if there are other mobile phone are connected, Bluetooth 4.0 only support connections one to many, dose not support many to many.
- (4) Check APP Bluetooth setting if the phone is connected to the device, if connect, exit the APP and reopen, the APP will go to connect automatically.
- (5) Normal operations and can not connect, please exit the APP and reopen.
- (6) Exit APP, restart mobile phone, power on the strip light, reopen the APP, then them will connect automatically.

## Instructions

Open the app, click the icon: LED DMX, and then enter the Bluetooth control interface.



1. Settings: You can set rhythm, RGB sort, code, timing, shake, change skin, rhythm can design your own color.



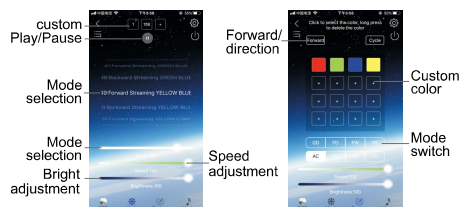
### Adjust pixels

The factory default pixel of the controller does not match the light bar. For example, most of the rear of the lamp is not bright or the head and tail are not continuous. At this time, the pixel point adjustment can be performed.

2. Color interface: The color interface has three parts: color ring, aisle and monochrome.

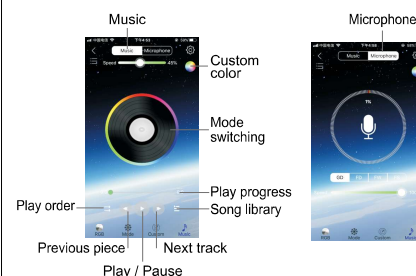


3. Mode interface: you can choose the mode, adjust the speed, adjust the brightness what you want;

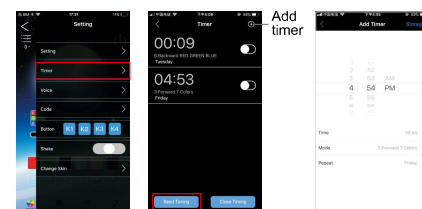


4. In custom interface, you can add color, choose mode, adjust speed.

5. Music interface has two modes, music and microphone, in music mode, the color changes by your mobile phone music; in microphone mode, the color changes by exterior sound.



6. Timer: You can set the specified time period to open or close the mode. After adding the timing, click the "Send Timing" button



The mode setting contains 210 different effects, You can set the desired time period to turn on the mode

## FCC WARNING:

Note: This equipment has been tested and found to comply with the limits for a Class B digital device, pursuant to part 15 of the FCC Rules. These limits are designed to provide reasonable protection against harmful interference in a residential installation. This equipment generates uses and can radiate radio frequency energy and, if not installed and used in accordance with the instructions, may cause harmful interference to radio communications. However, there is no guarantee that interference will not occur in a particular installation. If this equipment does cause harmful interference to radio or television reception, which can be determined by turning the equipment off and on, the user is encouraged to try to correct the interference by one or more of the following measures:

- Reorient or relocate the receiving antenna.
- Increase the separation between the equipment and receiver.
- Connect the equipment into an outlet on a circuit different from that to which the receiver is connected.
- Consult the dealer or an experienced radio/TV technician for help.

Caution: Any changes or modifications to this device not explicitly approved by manufacturer could void your authority to operate this equipment.

This device complies with part 15 of the FCC Rules. Operation is subject to the following two conditions: (1) This device may not cause harmful interference, and (2) this device must accept any interference received, including interference that may cause undesired operation.

## Radiation Exposure Statement

This equipment complies with FCC radiation exposure limits set forth for an uncontrolled environment. This equipment should be installed and operated with minimum distance 20cm between the radiator and your body.