

E45

说明书 manual

EXT.DIM : 74.3mm x 150mm x 20Page
UPDATE : 2021.08.12

印刷须知 :在指定区域裁减,划痕,折叠和粘贴胶水。
PRESS WORK / NOTES : Trim to size , score, fold & glue in specified areas



不要印刷刀模线和尺寸标注

DO NOT PRINT DIELINES or DIMENSION

说明书工艺要求:

材质:使用128g铜版纸,印刷内容如设计稿所示。封面封底过哑胶。

要求: 确保说明书折叠之后放入封套内,顶部和信封平齐,取出方便。

装订形式: 书本式,骑马钉结构(2个)

ARTWORK NOTES:

MATERIAL: 128G artpaper, printing content as shown in the design file.Cover and back cover use matte film.

NOTES: Make sure that the instructions are folded into the envelope, top and envelope level, easy to remove.

book-style, horse-riding nail structure (2 pieces)



SOUND PROFILES

Your sound, your way! As our sound profiles were crafted by artists and producers at the top of the industry, you're in good hands.

PURE SOUND - Our most refined sound, perfect clarity to hear every single note.

BALANCED SOUND - A leveled sound that is great for all around performance and warmth.

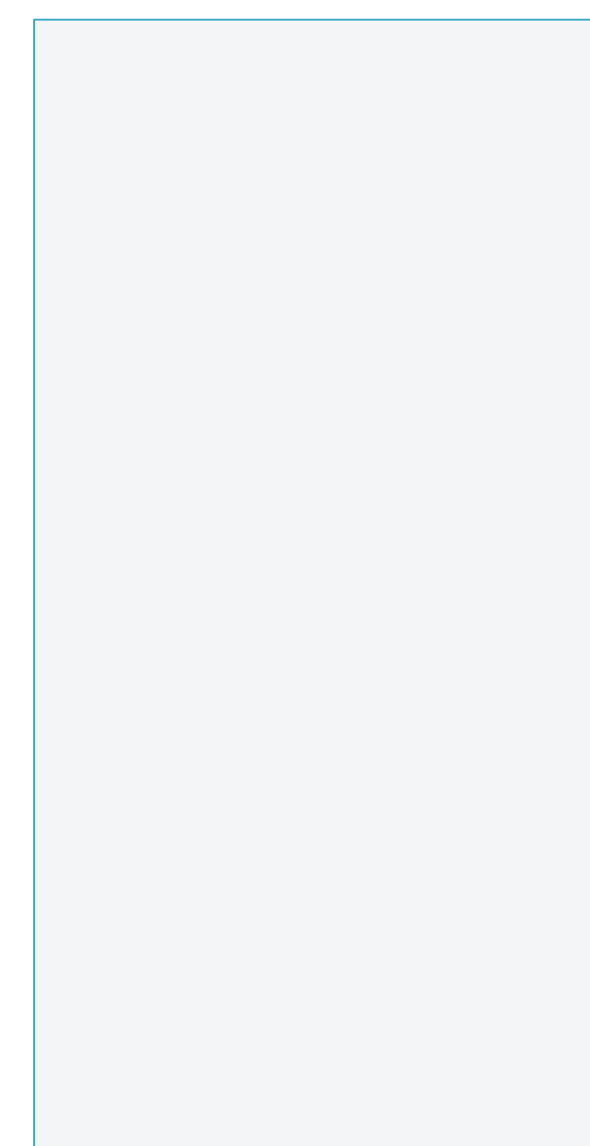
BASS SOUND - Our bass boosted sound, great for songs with strong beats and a go-to for bass lovers.

Hold **[Volume Up]** for 3 secs to toggle between Sound Profiles

AWARENESS MODE

AWARENESS MODE
Hear what's happening around you.

Hold **[Volume Down]** for 3 secs to toggle Awareness Mode On/Off



HOW TO CHANGE GEL TIPS

Choose and install the gel tip that gives you the most comfortable and secure fit.

Flip the gel tip inside out.

Align gel tip with earbuds and insert it.

Flip the gel tip back to front.

Make sure it is securely attached before you use.

TABLE OF CONTENTS

- INTRODUCTION 1
- UNIT AT A GLANCE 2
- FEATURES AT A GLANCE 3
- QUICK START GUIDE 4
- CHARGING YOUR DEVICE 5
- FUNCTIONS 7
- SOUND PROFILES 8
- AWARENESS MODE 8
- HOW TO CHANGE GEL TIPS 9
- HOW TO CHANGE STABILIZERS 10
- GEL TIPS 11
- PERFECT FIT STABILIZERS 11
- THE PERFECT FIT 11
- SAFETY GUIDELINES 12
- FAQ & ADDITIONAL RESOURCES 13
- SUPPORT 13
- LIMITED WARRANTY 13
- SPECIFICATIONS 13

HOW TO CHANGE STABILIZERS

Ensure the stabilizer corresponds with the correct earbud.

Secure the inner hook of the stabilizer into the groove at the top of the earbud.

Guide the stabilizer into place.

Ensure stabilizer is fully secure before use.

INTRODUCTION

Welcome to your new Raycon Fitness Earbuds!

We are Raycon. We create carefully crafted wireless audio products for go-getters who need tech that keeps up with them. We teamed up with expert engineers, leading taste-makers, and platinum artists to design products you'll love to use.

We believe in the early risers and the one-more-milers of the world. Premium audio, inspired by you.

Before using your product, we strongly encourage you to fully read through this user guide. You can also visit our support center at www.rayconglobal.com/support. This web page has more specific guidelines and helpful videos for you to navigate your product. For the best performance, charge fully before first use.

Pairing ID: **The Fitness Earbuds International Manual**
For international versions of the manual, please visit www.rayconglobal.com/support.

GEL TIPS

XS M L XL

Customize your fit. Select the right size gel tip for you! Keep gel tips clean to ensure a great listening experience.

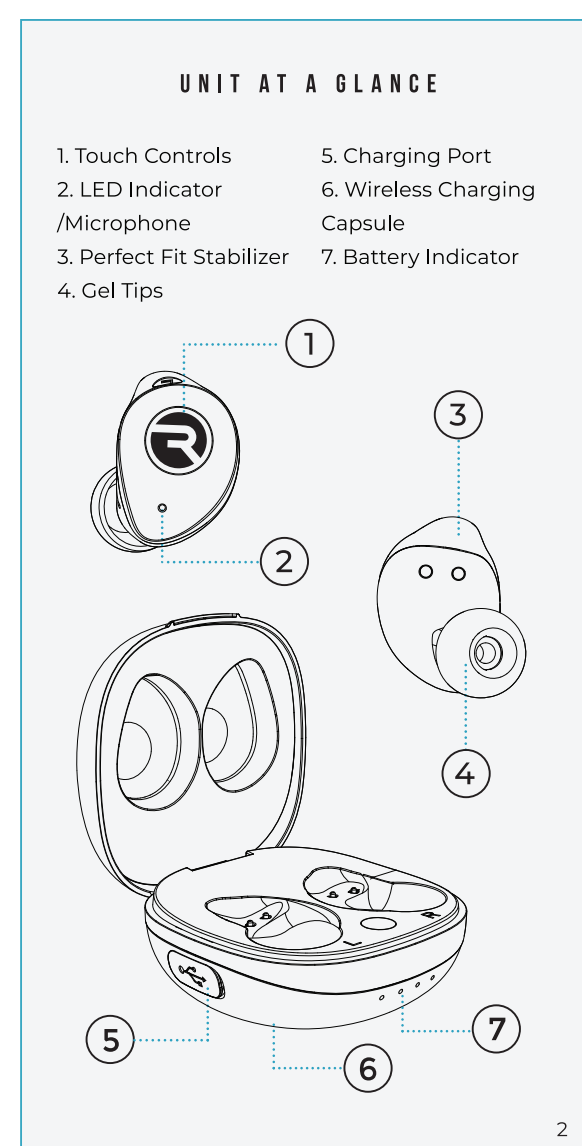
PERFECT FIT STABILIZERS

XS M L

Find the Perfect Fit. Select the right size stabilizer for you!

THE PERFECT FIT SHOULD LOOK LIKE THIS

Insert the earbuds into your ear. Rotate the earbuds slightly forward. The perfect fit should look like this.



SAFETY GUIDELINES

Please follow the safety guidelines below at all times when operating or caring for your device.

- Be wary of any edges, uneven surfaces, and metal parts, including on accessories and product packaging, to prevent any possible injury or damage.
- Listen to music at a proper volume to avoid damaging your hearing and the earbuds.
- Do not store in high temperatures, such as in a hot vehicle or in direct sunlight.
- Do not expose the earbuds or any of its supplied parts to rain or other liquids for extended periods of time. Follow IPX7 Rating Guidelines.
- If wet or submerged, please wipe dry as best possible before charging earbuds or capsule.
- Do not drop or cause undue impact to the earbuds.
- Do not modify, repair, or dismantle the product on your own.
- Do not use any diluent or volatile liquid to clean the product.
- Do not use the product in a hazardous location.

FEATURES AT A GLANCE

- PERFECT FIT STABILIZERS**
Perfect fit stabilizers make sure your Fitness Earbuds stay put even while you're on the move.
- IPX7 WATERPROOF**
Tough conditions don't get in the way of your workouts, they definitely won't get in the way of your tunes because the Fitness Earbuds are IPX7 waterproof.
- 54 HOURS OF BATTERY LIFE**
You don't have time to wait around for a charge, that's why the Fitness Earbuds have 54 Hours of battery life.
- AWARENESS MODE**
Stay focused on your workout but in tune with your surroundings with Awareness Mode.
- VIVID VOICE TECHNOLOGY**
Make your voice heard loud and clear even while you're breaking a sweat with Vivid Voice Technology.
- THREE SOUND PROFILES**
Three Sound Profiles keep your workouts exciting by keeping the sound fresh.

FAQ & ADDITIONAL RESOURCES

Visit: www.rayconglobal.com/support

SUPPORT

If your device is not functioning correctly, please visit www.rayconglobal.com/support for customer support, and we will be more than happy to help you.

LIMITED WARRANTY

Visit: www.rayconglobal.com/warranty

SPECIFICATIONS

Model Number: RBE745
Bluetooth Name: The Fitness Earbuds
RDID: D745-21E-Q321
Bluetooth Version: 5.2
Power Input: DC 5V/1A
Capsule Battery Capacity: 3.7V/600mAh
Call / Play Time: About 9 hours
Charging Time: About 1 hour
Support Profiles: HSP/HFP/A2DP/AVRCP
Sensitivity: 102±3dB
Frequency Response Range: 20-20000Hz
Bluetooth Range: Up to 10 Meters

QUICK START GUIDE

1. Take your earbuds out of the capsule. Both earbuds will connect to each other automatically.
2. From the source device, go to Bluetooth Settings, search for "The Fitness Earbuds" to pair and select it to pair.
3. Enjoy your Raycon Fitness Earbuds!

FCC WARNING

This device complies with part 15 of the FCC Rules. Operation is subject to the following two conditions: (1) this device may not cause harmful interference, and (2) this device must accept any interference received, including interference that may cause undesired operation. Any changes or modifications not expressly approved by the party responsible for compliance could void the user's authority to operate the equipment.

NOTE: This equipment has been tested and found to comply with the limits for a Class B digital device, pursuant to Part 15 of the FCC Rules. These limits are designed to provide reasonable protection against harmful interference in a residential installation. This equipment generates, uses, and can radiate radio frequency energy and, if not installed and used in accordance with the instructions, may cause harmful interference to radio communications. However, there is no guarantee that interference will not occur in a particular installation. If this equipment does cause harmful interference to radio or television reception, which can be determined by turning the equipment off and on, the user is encouraged to try to correct the interference by one or more of the following measures:

CHARGING YOUR DEVICE

1. Charging the Earbuds
Place Earbuds in the capsule.
Charging
While charging, the lights on earbuds will be red, and the lights on capsule will be white.
Fully Charged
Your earbuds are fully charged when the lights on both your earbuds and capsule turn off.
Call / Play: About 9 hours
Total battery life: About 54 hours

- Reorient or relocate the receiving antenna.
- Increase the separation between the equipment and receiver.
- Connect the equipment into an outlet on a circuit different from that to which the receiver is connected.
- Consult the dealer or an experienced radio/TV technician for help. The device has been evaluated to meet general RF exposure statement. The device can be used in portable exposure condition without restriction

2. Charging The Capsule

Connect with Type-C cable

Charging
While charging, the lights on the capsule will blink white.

Fully Charged
When fully charged, lights will turn off.

A fully charged capsule can completely recharge the earbuds up to 5 times before needing to recharge the capsule.

Wireless Charging: Simply place the case on any Qi-compatible charging mat.

IC Caution:

- English:
This device complies with Industry Canada licence-exempt RSS standard(s). Operation is subject to the following two conditions:
(1) This device may not cause interference, and
(2) This device must accept any interference, including interference that may cause undesired operation of the device.

- French:
Le présent appareil est conforme aux CNR d'Industrie Canada applicables aux appareils radio exempts de licence. L'exploitation est autorisée aux deux conditions suivantes:
(1) L'appareil ne doit pas produire de brouillages, et
(2) l'utilisateur de l'appareil doit accepter tout brouillage radioélectrique subi, même si le brouillage est susceptible d'en compromettre le fonctionnement.

FCC ID: 2A20V-RBE745
IC: 2785-RBE745

FUNCTIONS

Control audio and other functions by tapping the logo on the earbud

Media Player Control

- Tap **[Volume Up]** for Volume Up
- Tap **[Volume Down]** for Volume Down
- Tap **[Play/Pause]** 2 times for Play/Pause
- Tap **[Next]** 3 times for Next
- Tap **[Previous]** 3 times for Previous
- Tap **[Voice Assistant]** 4 times to Activate Voice Assistant

Phone Call Control

- Tap **[Call]** 2 times for Answer/End Call
- Hold **[Reject]** for 3 secs to Reject Call

Switch Control

- Hold **[Power On]** for 3 secs or remove from capsule to Power On.
- Hold **[Power Off]** for 10 secs or place earbuds in charging capsule to Power Off.

