



深圳市康源新通信技术有限公司

深圳市南山区西丽镇龙珠三路光前工业区 21 栋 6 楼
电话: 0755-86238626 传真: 0755-86238957
E-mail:sales@kyxct.com Web:www.kyxct.com

规格书/Spec

客户/Customer:

深圳嘉华恒泰科技有限公司/Shenzhen Ka Wah Hengtai Technology Co.,Ltd

WIFI 天线/Wi fi antenna

产品类别/products:

客户项目号/Model :

Y6 (AK330L-QY-37-V2.2)

客户物料编码/ Material

/

code

:

JHS29-A

康源新产品型号/Koyox Mdel :

康源新通信技术有限公司			
拟制:	审核:	批准:	
深圳嘉华恒泰科技有限公司			
品质确认:	工程确认:	项目确认:	批准:



深圳市康源新通信技术有限公司

深圳市南山区西丽镇龙珠三路光前工业区 21 栋 6 楼
 电话: 0755-86238626 传真: 0755-86238957
 E-mail:sales@kyxct.com Web:www.kyxct.com

电气规格/Electrical Spec :

频段/frequency range	2400-2500MHz	天线材质/Antenna material	
输入阻抗/Input impedance	50 Ω	天线连接方式/Antenna connection mode	一代端子连接/one terminal connect
驻波比/standing-wave ratio	≤2	工作温度/operation temperature	40°C ± 20°C
增益/gain	2.84dBi	保存温度/storage temperature	25°C ± 5°C
极化方式/Polarization	线极化/Linear Polarization		

一、天线数据/Antenna data

WIFI 天线有源测试数据/Wi fi active antenna test data :

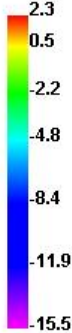
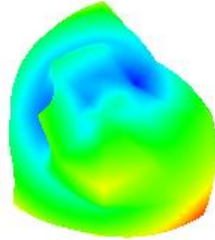
Standard	Band	Chann	TRP	TIS
WIFI (AP)	WIFI_B (11M)	1	15.76	-79.65
		6	15.41	-79.89
		11	14.57	-80.51
		AVE		

2.Efficiency&Gain:

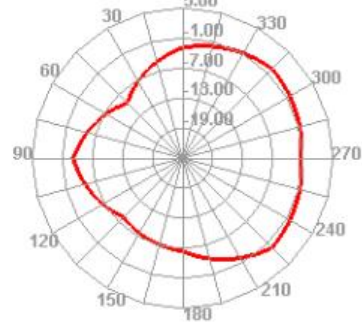
Freq (MHz)	Effi (%)	Gain (dBi)
2400	46.44	2.29
2450	49.18	2.84
2500	48.27	2.39

3. Directional diagram :

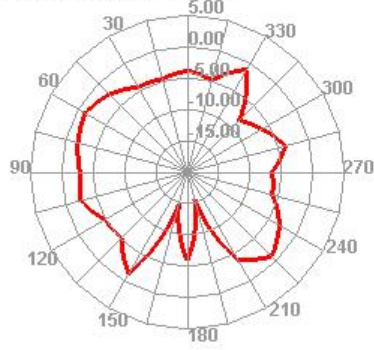
2400.000MHz



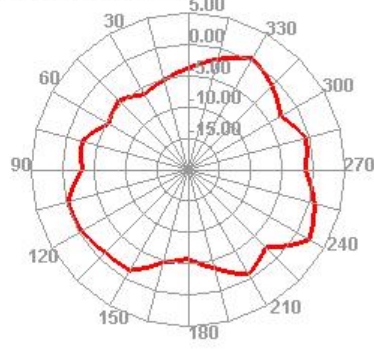
2400.000MHz H



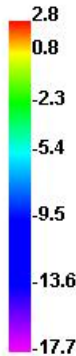
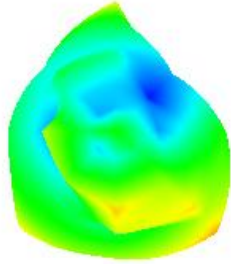
2400.000MHz E1



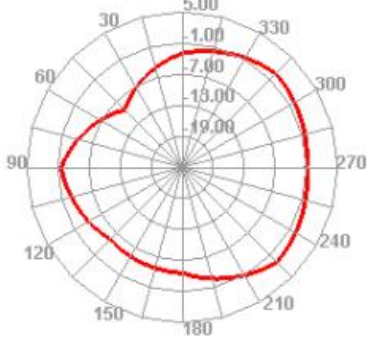
2400.000MHz E2



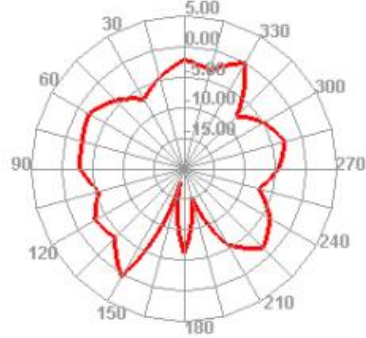
2450.000MHz



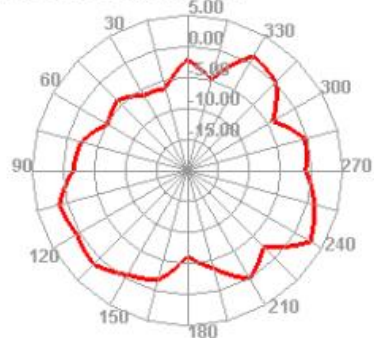
2450.000MHz H

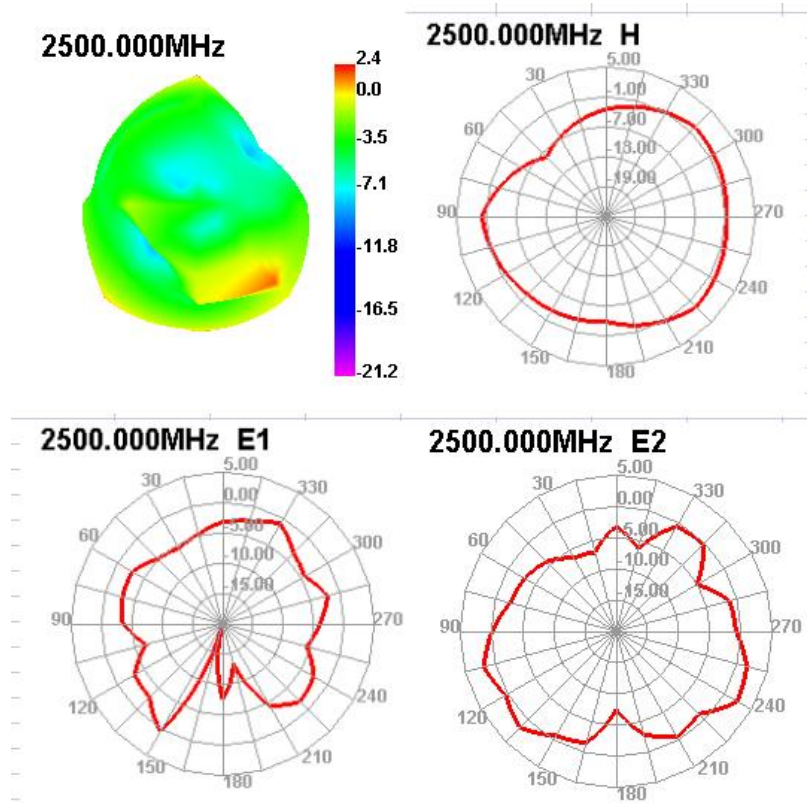


2450.000MHz E1

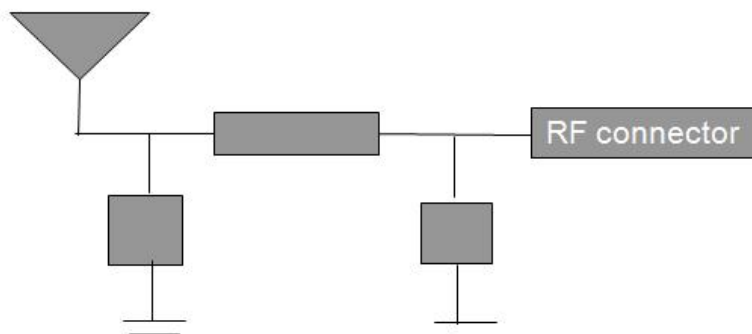


2450.000MHz E2





匹配电路：未更改/Matching circuit: Unchanged



二、天线图纸:
Antenna drawing

