



Shenzhen Kangyuan New Communication Technology Co., LTD  
6th Floor, Building 21, Guangqian Industrial Zone, Longzhu 3rd Road, Xili Town,  
Nanshan District, Shenzhen  
Tell: 0755-86238626 Fax: 0755-86238957  
E-mail:sales@kyxct.com Web:www.kyxct.com

---

## Specification

Client : Shenzhen Ka Wah Hengtai Technology Co.,Ltd

product : 4G low power external antenna

Customer Project No: 4G (NG95-UL)

product model : JHS19-A

Specifications

Frequency band	700-960MHz;1710-2690MH	Antenna material	Plastic+Cable
Input impedance	50Ω	Antenna connection mode	First generation terminal connection
SWR	≤3	Operating temperature	40°C±20°C
Gain	2.0dBi	Storage Temperature	25°C±5°C
Polarization	linear polarization		

一、Antenna data

4G antenna active test data:

Band	Channel	TRP
FDD_B2(10M)	L	20.15
	M	19.34
	H	18.42
	<b>AVE</b>	
FDD_B4(10M)	L	16.58
	M	16.42
	H	16.65
	<b>AVE</b>	
FDD_B5(10M)	L	17.83
	M	17.07
	H	16.44
	<b>AVE</b>	
TDD_B12(10M)	L	14.78
	M	14.46
	H	14.23
	<b>AVE</b>	
TDD_B13(10M)	M	16.44
	<b>AVE</b>	
TDD_B25(10M)	L	20.65
	M	19.68
	H	18.36
	<b>AVE</b>	
TDD_B26 (10M)	L	17.31
	M	16.77
	H	16.59
	<b>AVE</b>	



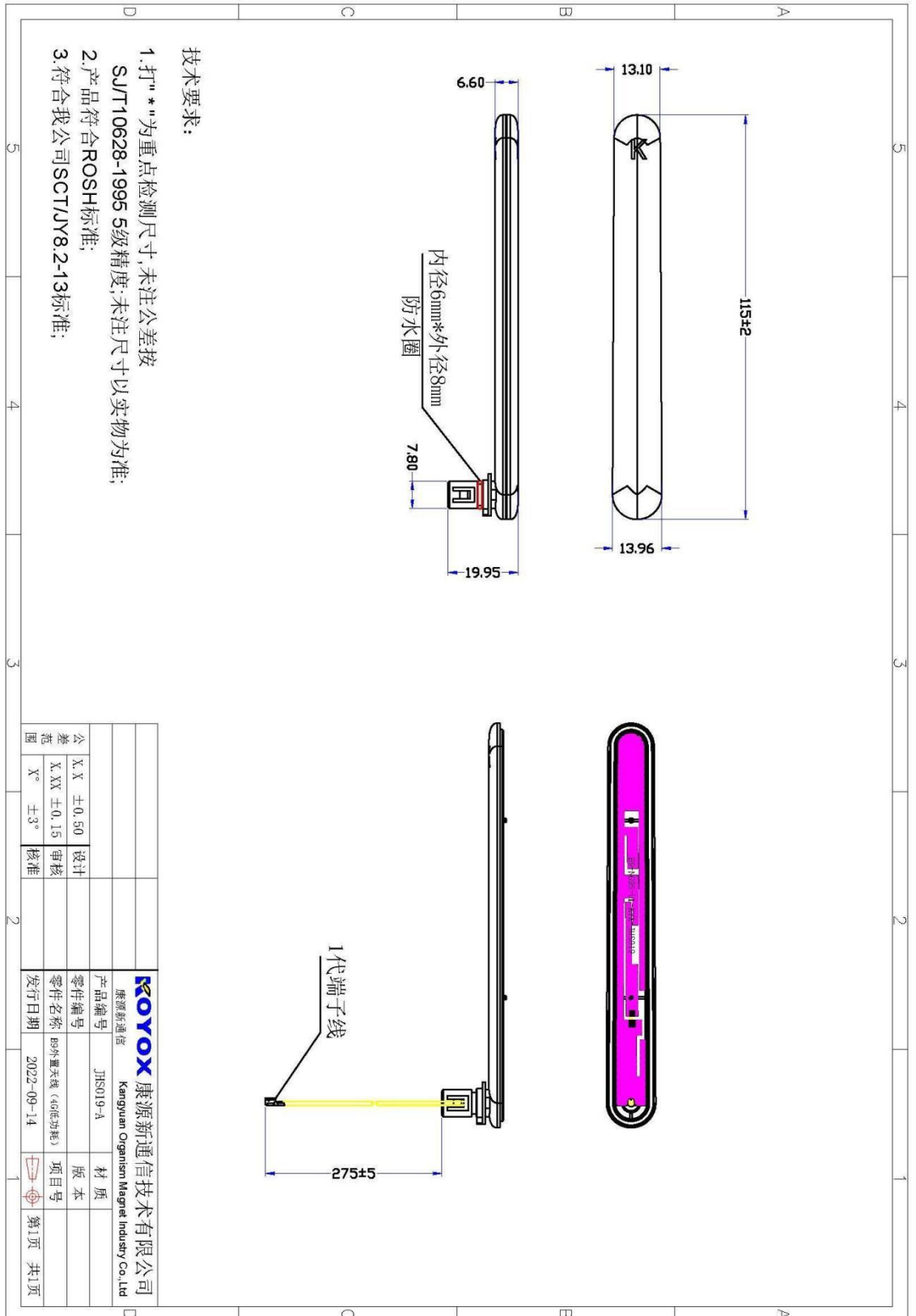
Shenzhen Kangyuan New Communication Technology Co., LTD  
 6th Floor, Building 21, Guangqian Industrial Zone, Longzhu 3rd Road, Xili Town,  
 Nanshan District, Shenzhen  
 Tell: 0755-86238626 Fax: 0755-86238957  
 E-mail:sales@kyxct.com Web:www.kyxct.com

4G antenna efficiency and gain:

Freq (MHz)	Effi (%)	Gain (dBi)
700	25.73	-0.65
720	26.5	-0.88
740	35.09	1.4
760	32.83	1.21
780	33.35	0.83
800	32.32	1.11
820	34.26	0.71
840	40.06	0.86
860	35.95	0.54
880	27.04	-1
900	26.85	-0.99
920	28.22	-0.07
940	26.63	-0.52
960	24.08	-0.66

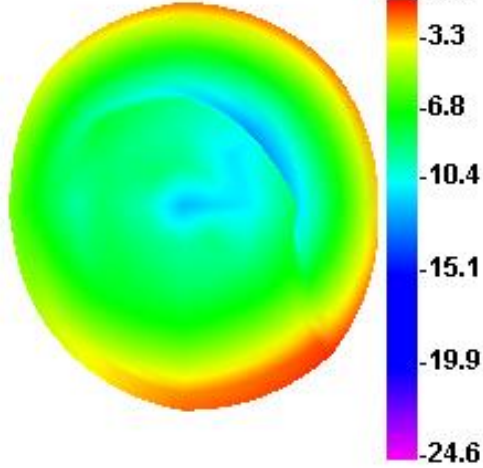
Freq (MHz)	Effi (%)	Gain (dBi)
1700	32.46	-0.49
1750	30.63	-0.39
1800	31.38	0.17
1850	33.23	0.34
1900	30.36	-0.2
1950	45.98	1.64
2000	41.99	1.25
2050	36.42	0.72
2100	49.4	1.93
2150	33.52	0.3
2200	31.42	-0.19
2250	33.96	0
2300	36.11	0.38
2350	39.24	0.31
2400	43.03	1.16
2450	50.88	1.26
2500	52.85	1.49
2550	57.58	2.06
2600	56.19	2.02
2650	54.72	2.34
2700	47.69	2.15

二、Antenna drawing:

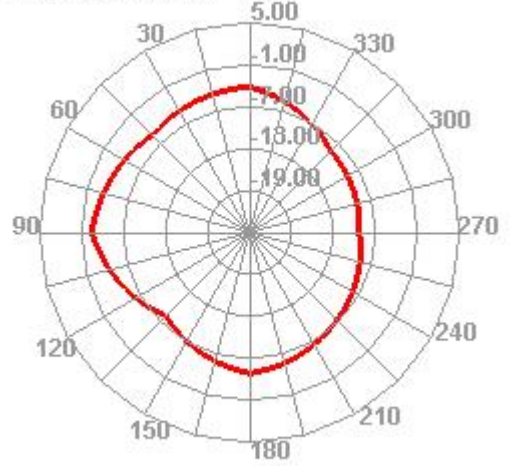


三、Data

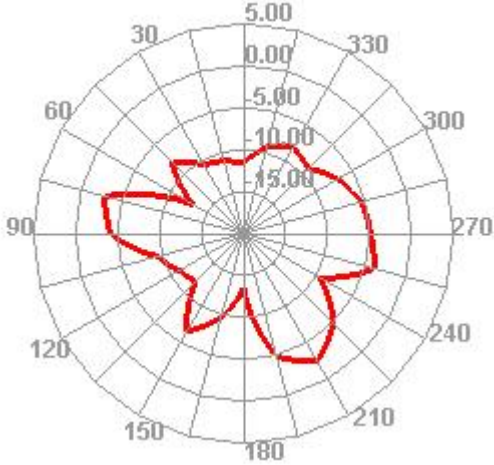
720.000MHz



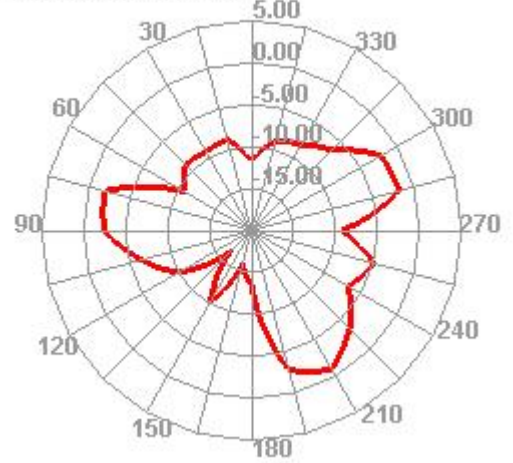
720.000MHz H



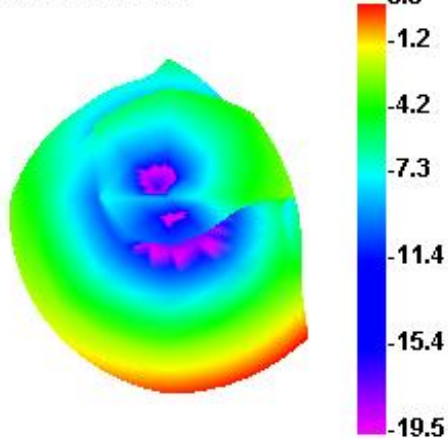
720.000MHz E1



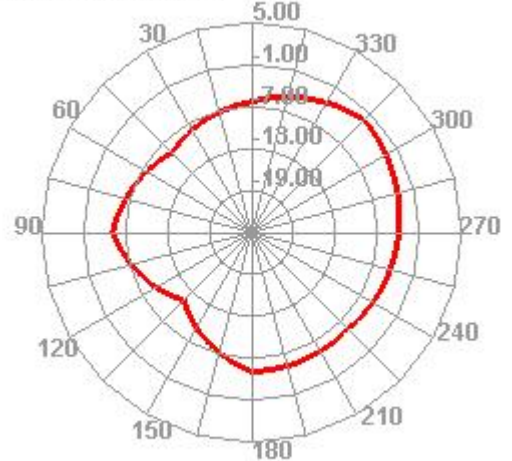
720.000MHz E2



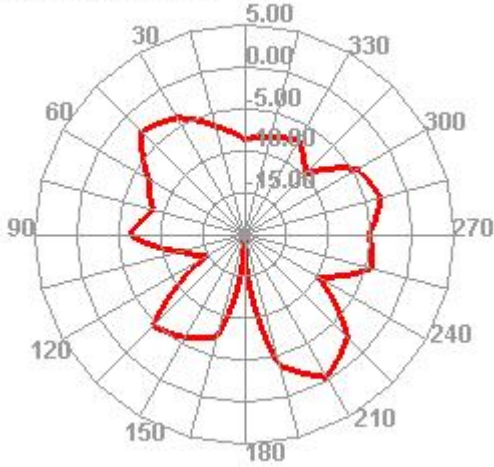
820.000MHz



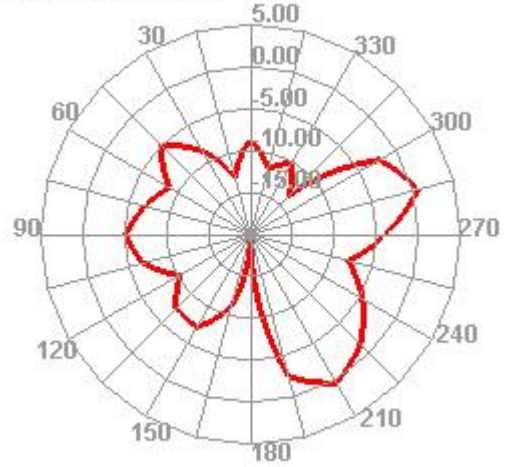
820.000MHz H



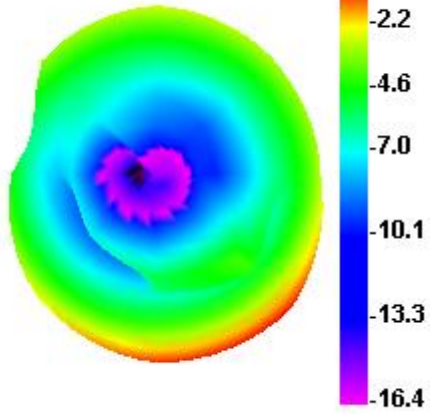
**820.000MHz E1**



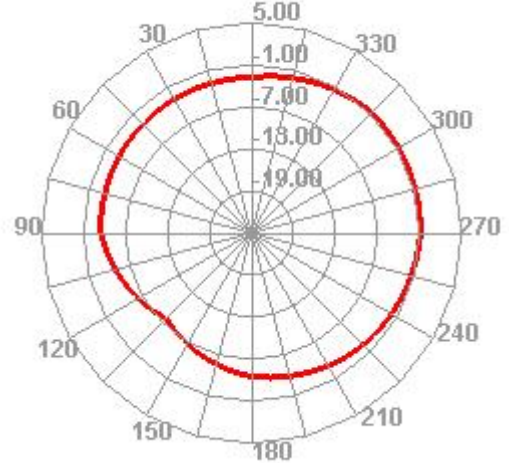
**820.000MHz E2**



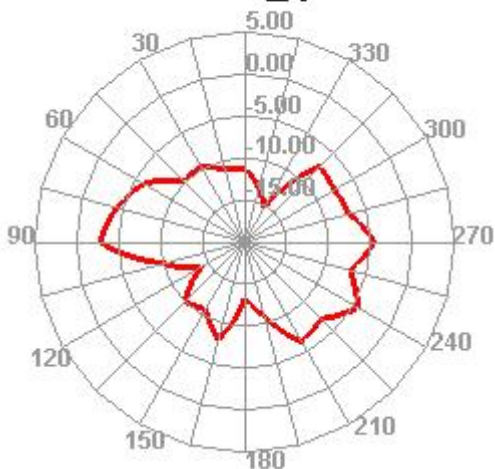
**960.000MHz**



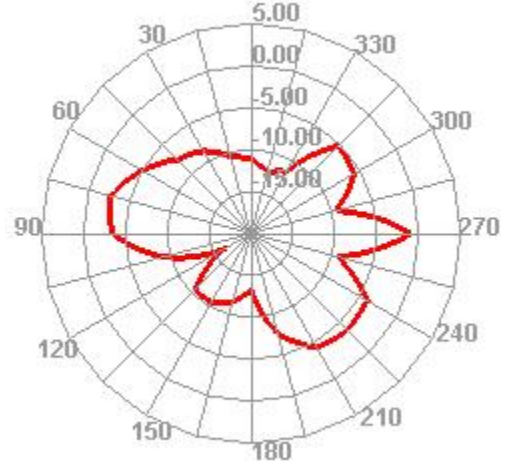
**960.000MHz H**



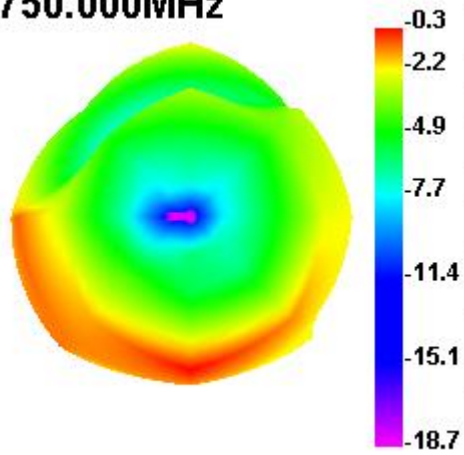
**960.000MHz E1**



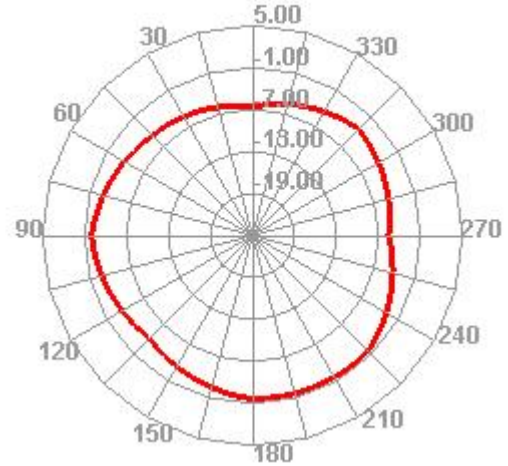
**960.000MHz E2**



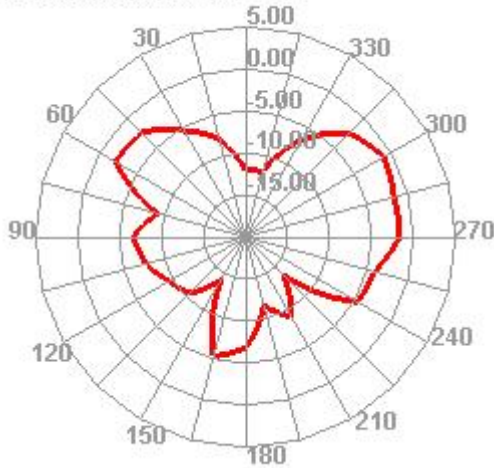
**1750.000MHz**



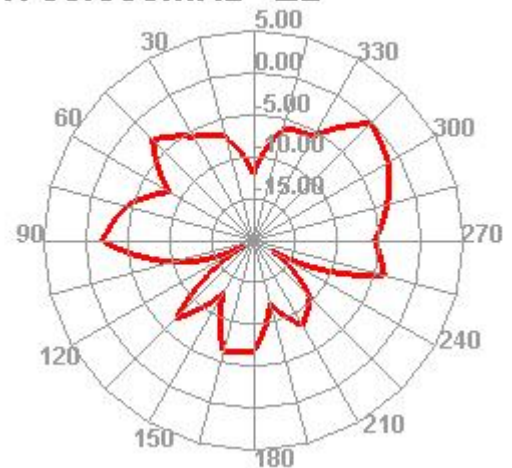
**1750.000MHz H**



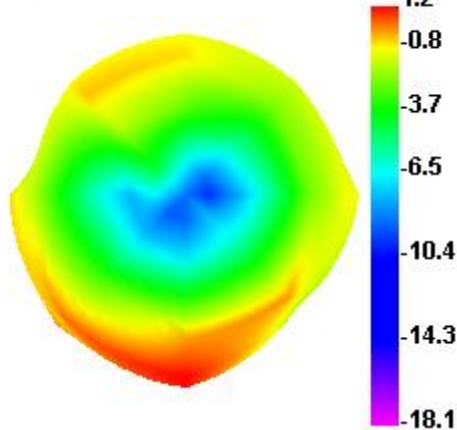
**1750.000MHz E1**



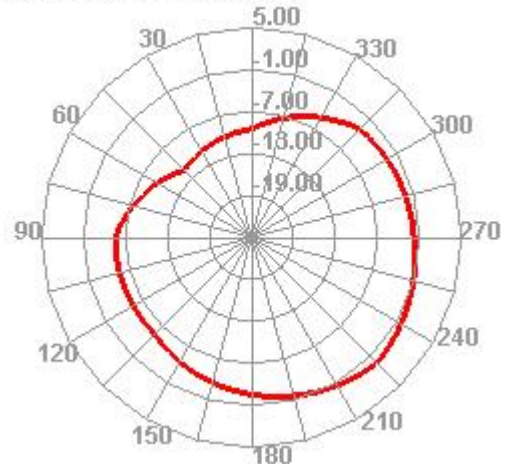
**1750.000MHz E2**



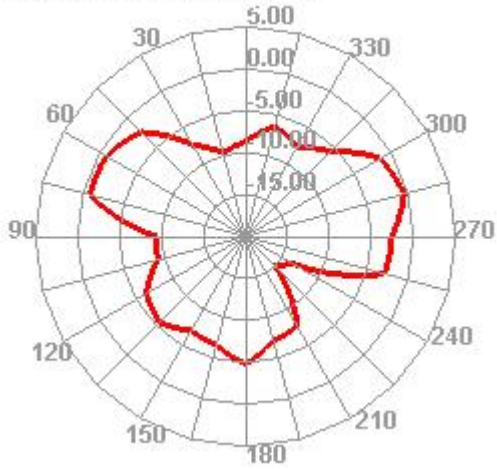
**2450.000MHz**



**2450.000MHz H**



**2450.000MHz E1**



**2450.000MHz E2**

