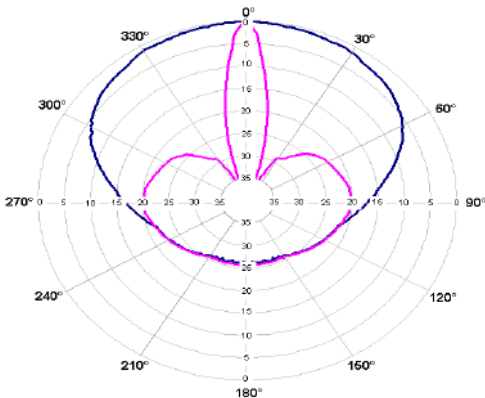
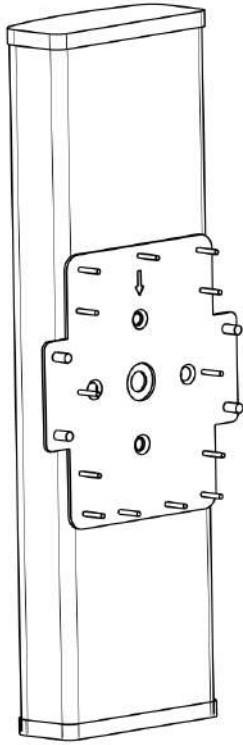




5.18-5.9 GHz 17dBi 90° 2x2 MIMO V&H Poln with UFL Connector Sector Antenna

HF55-HVSECT-17-2X2MIMO



Typical Radiation Pattern
Radiation Pattern Blue=H-Plane, Magenta= E-Plane

Electrical Parameters

Frequency (MHz)	5180 - 5900
Gain (dBi)	2 x 17±0.5
VSWR (Max)	1.5:1
H Plane BW (°)	90±5
E Plane BW (°)	8±1
Polarization	V & H
Port to Port Isolation (dB)	> 30
Impedance (Ω)	50
Front to Back Ratio (dB)	> 30
Cross Poln. (dB)	> 25
Connector Termination	2 x UFL , 160 mm extended
Lightning Protection	DC Grounded

Mechanical Parameters

Dimension (mm)	480 X 130 X 62
Gross Weight (Kg)	≈1.2±0.2
Radome	PVC
Mounting Hardware	NA
Mounting Style	Direct Interface to Radio
Mounting Pole Diameter	NA
Mechanical Down tilt	NA

Environmental Parameters

Temperature Range (°C)	(-) 40 to (+) 70
Wind Speed (km/hr)	200 (Survival) 150 (Operational)
Humidity	95% No Condensation
Water Proofing	IP 65

Rev. 1.0 Date: 23-03-2021