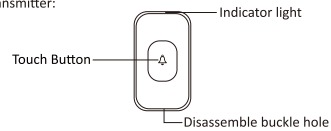
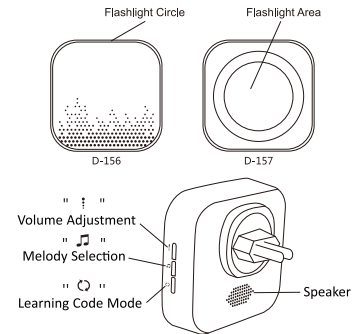


VI. Operation Instructions

Transmitter:



Operation Instructions



1. Plug the receiver into the standard socket (AC:110V~240V).
2. Volume Adjustment: Each short press of the "V" volume button will reduce the one level volume, which is divided into four levels: large, medium, small and silent, 4 level loop.
3. Choose Melody: press "M" button to select melody, each pressing play the next melody, 36 melodies totally loop.
4. Install the battery into transmitter following the step below, please pay attention to the positive and negative electrodes of the battery
5. Learning Code Setting
When the doorbell leaves factory, the transmitter and receiver have completed one-to-one default learning code matching. The receiver can correspond to eight transmitters at most. If it is necessary to increase the transmitter or the default learning code matching disappears, it can reset the learning code following below step:
Keep pressing "C" "M" mode button for 2 seconds to enter learning code mode. Please keep pressing the mode button and then touch the button on transmitter, the receiver rings and colorful lights flash, indicating the success of code learning and release the mode button. Please note that the receiver can only learn the code with one transmitter at one time. If you need to add the transmitter, please follow the method to learn code again.
Please testing after learning code.

VII. Fault Analysis and Solution

Failure Performance	Solution
1. The doorbell does not ring or the LED flash light does not bright.	a. Check the receiver whether plug into socket in right way or the volume stay at silent level ---- Re-plug the receiver into socket or adjust the volume level. b. Check whether transmitters and receivers are not matched ---- Learning code again c. Check the battery of transmitter whether insert on right way or the battery is out of power ---- Re-install the battery
2. The receiving distance of doorbell is shortened	a. Metal objects, including "iron anti-theft doors, iron doors, iron doorframes" will reduce the effective transmission distance of the doorbell, please try to keep the transmitter or receiver away from the metal objects; b. Building obstacles, walls, enclosed space will weaken the transmission signal; there will be interference from other equipment such as television, magnets, electromagnetic ovens around; c. Insufficient or insufficient battery voltage will shorten the remote distance and miss ring.
3. The switching method of ringtone between loop mode and fixed mode.	Please keep pressing "M" for 5 seconds when the ringtone of receiver plays in a continuous loop. It will switch to a fixed ringtone when you hear the receiver ring once.

2.0

Wireless Doorbell Instruction

□ D-157 □ D-156

For your better use of this product, please read the product manual carefully before installation, and install and use it correctly according to the manual.

I. Feature:

- Simple and elegant design, show the unique style
- Wireless installation without drilling or wire
- 300M/1000 feet ultra long wireless range
- 36-Melody Wireless Door Chime, 4-level volume adjustment
- Large area of colorful flashlights, dazzling and beautiful
- Learning code doorbell, transmitter and receiver can learn the code and match freely. It is easy to operate and avoids interference signal error

II. Packing list:

1. Receiver doorbell
2. Remote control
3. Manual
4. One set of sponge glue + screw bag

III. Product Specification

Specification:

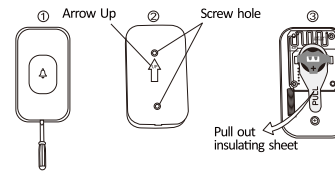
Technical Parameters	Receiver	Transmitter
Voltage Range	110V-240VAC	CR2302 3V Batteryx1
Operating Temperature	-10°C~55°C/14°F~131°F	-4°F~140°F
Transmission Distance	300M / 1000 Feet in open area	
Working Frequency	433.92MHz±200KHz	
Volume	0-110dB	
Power Dissipation	≤0.5W	
Plug	EU Plug/SAA Plug/BS Plug	

IV. Pre-installation instructions

1. The transmitter should be installed outside the door, and the height should be between 1.2 meters and 1.7 meters above ground level for optimal performance. It can also be installed on the door or wall directly, but not installed on the metal door or too close to the metal, it will weaken the signal and affect the remote actual control distance.
2. The receiver should be installed far away from the machine that can emit electromagnetic radiation (television, Hi-Fi equipment, computer, etc), for electromagnetic wave will interfere with the reception of the signal.
3. The actual remote distance depends on the change of environmental factors.
4. The receiver can be inserted in an arbitrary power outlet indoor. It's recommended to install on the wall socket. If it can't receive the signal well, please adjust the receiver or transmitter to the right position.
5. When the doorbell have operated for a long time, the transmitter battery should be replaced (Recommended the alkaline high energy batteries)
6. The doorbell is not a toy and should be kept out of reach from Children
7. The non-professional should not open the device to maintenance, so as not to destroy the precision electronic components.

V. Installation

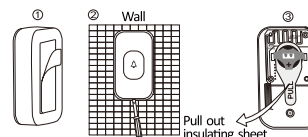
- Transmitter Installation (Outdoor Unit)
Method two (screw installation) (see picture)



Pre-installation preparation tool: Electric drill, Cross screwdriver, Flat screwdriver, Screws

1. Use a flat screwdriver to pry the cover of the Transmitter (from bottom to top at the buckle hole) and pull the insulating sheet out.
2. Select the installation location, the general installation height should be between 1.2 meters and 1.7 meters above ground.
3. Place the bottom cover of transmitter on installation position, punch holes or screw up according to the mark position of the base round hole (the arrow must be pointing up)
4. Buckle the front cover of transmitter with the base, and ensure there is no gap or dislocation between cover and base.
5. Installation is completed.

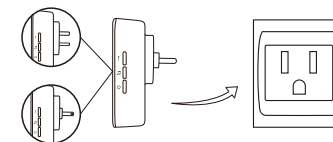
Method one (double-sided adhesive installation) (see picture)



Pre-installation preparation tool: Flat screwdriver, Dry cloth, Double-sided adhesive tape

1. Select the installation location, the general installation height should be between 1.2 meters and 1.7 meters above ground, and wipe the installation position clean.
2. Remove the sticker from the double-sided adhesive and stick it to the place where the transmitter needs to be installed. Press it forcefully for 30 seconds until it is firmly (Screw installation is recommended on lime wall or rough surface).
3. Use a flat screwdriver to pry the cover of the Transmitter (from bottom to top at the buckle hole) and pull the insulating sheet out.
4. Buckle the front cover of transmitter with the base, and ensure there is no gap or dislocation between cover and base.
5. Installation is completed.

Receiver Installation



AC Receiver (Indoor Unit)

Plug the receiver into the standard socket (AC:110V~240V). Please keep away from the electrical appliances with high electromagnetic radiation (TV, audio, computer, etc.) as far as possible. Electromagnetic waves will interfere with the reception of signals.

This device complies with Part 15 of the FCC Rules. Operation is subject to the following two conditions: (1) this device may not cause harmful interference, and (2) this device must accept any interference received, including interference that may cause undesired operation

NOTE: This equipment has been tested and found to comply with the limits for a Class B digital device, pursuant to Part 15 of the FCC Rules. These limits are designed to provide reasonable protection against harmful interference in a residential installation. This equipment generates, uses and can radiate radio frequency energy and, if not installed and used in accordance with the instructions, may cause harmful interference to radio communications. However, there is no guarantee that interference will not occur in a particular installation.

If this equipment does cause harmful interference to radio or television reception, which can be determined by turning the equipment off and on, the user is encouraged to try to correct the interference by one or more of the following measures:

- Reorient or relocate the receiving antenna.
- Increase the separation between the equipment and receiver.
- Connect the equipment into an outlet on a circuit different from that to which the receiver is connected.
- Consult the dealer or an experienced radio/TV technician for help.

Warning: changes or modifications not expressly approved by the party responsible for compliance could void the user's authority to operate the equipment