

Operation Manual

Intelligent Wi-Fi Visual Intercom System

user manual 1.0

Please read the instructions carefully before using to guarantee correct and proper operation

Content

	PAGE		PAGE
I. Indoor unit		C. [Volume]	19
I. Product parameters	01	D. [Storage]	20
II. System Information	02	E. [Display]	21
III. Quick Start Operation Guide	04	F. [Others]	22
A. Power on the device and conduct a startup test	04	IV. Tuya App Quick Start Guide	24
B. Language settings	04	V. Sharing Home Group with Other Phone Users	26
C. Main interface function introduction	05	VI. How to Manage Home Members	28
i. [Monitor]	06	VII. Remove the bound device and delete the network	29
ii. [CCTV]	08	VIII. Indoor Unit Installation Instructions	30
iii. [Intercom]	09	II. Outdoor unit	
iv. [Media]	11	I. Product structure	31
v. [Scenario mode]	13	II. Product parameters	31
vi. [Setting feature introduction]	13	III. Wiring diagram	32
A. [Recording]	13	IV. Installation Instructions	33
B. [WI-FI]	15		
[Download and register the Tuya app]	16		
[Creating a home group operation]	16		
[Tuya App Pairing Operation]	17		
A). Method One (Search for "Add Device")	17		
B). Method Two (Scan the "Add Device")	18		

Matters needing attention

a. Test before installation

Open the package, check whether the accessories are complete, use the original test cable for the outdoor unit and indoor unit, whether it work normally, and then install.

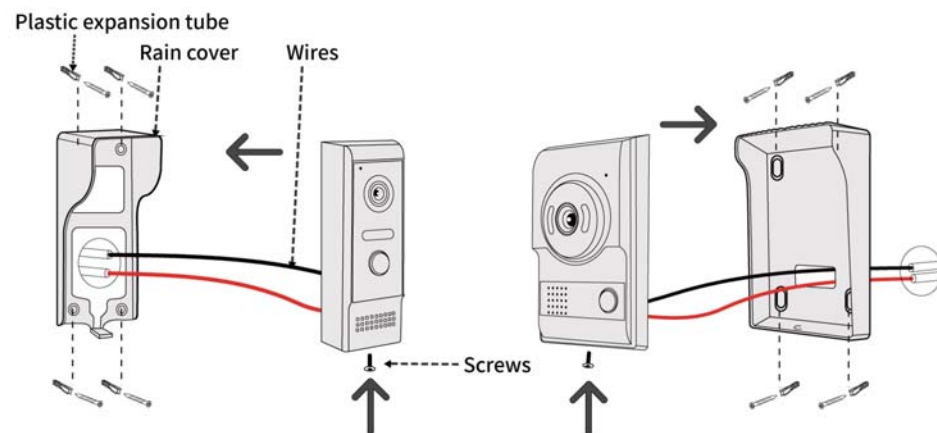
Note: The wiring must be strictly in accordance with the connection diagram of the manual, otherwise the function not be used normally, or even damage the equipment; please refer to the purchased access control power supply manual for the use of the access control power supply, which is not included in the set.

b. Maintenance

1. Don't use it with any product not produced by our company;
2. Users shall follow the user manual strictly to install and test the product. Please call our company for technical support if you have any question.

IV. Installation Instructions

How to install the outdoor unit:



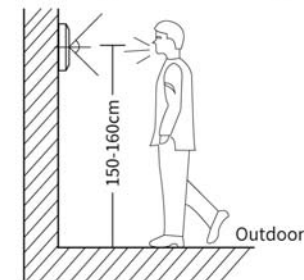
A. Installation & location of outdoor unit

At first, determine the location and height for installing the outdoor unit; the reference height is 150-160 cm from the camera center to ground.

B. Fix the outdoor unit rain cover

As shown in the figure: Take out the rain cover; open the package of screws to take out the plastic expansion tube and screws;

- a). Drill a hole, bore diameter: about 6mm;
- b). Fix the plastic expansion tube at the above hole;
- c). Fix the rain cover with screws.



C. Secure the Outdoor Unit

- a). Remove the outdoor unit and cables, and thread the cables through the outdoor unit's rain cover;
- b). Neatly arrange the cables and correctly connect them to the outdoor unit;
- c). Hang the outdoor unit horizontally on the already fixed rain cover;
- d). Secure the outdoor unit below with screws.

Note:

- a). During installation, please stay away from strong radiation devices such as TVs, computers, and VCRs;
- b). Do not disassemble without permission to avoid electric shock;
- c). Do not drop, shake, or impact the device, as it may damage the components;
- d). Choose the best installation position with a distance of 150cm from the horizontal line of sight;
- e). Turn off the power before installation;
- f). Maintain a distance of more than 60cm from AC power to avoid interference, and keep away from water, magnetic fields, and chemicals.

III. Wiring diagram

A. Wiring diagram for electric lock control

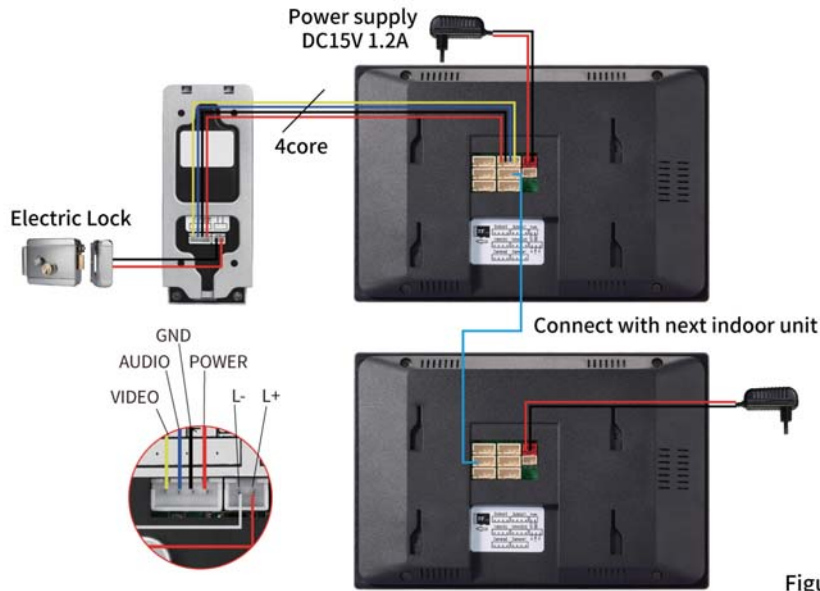


Figure 2

B. Access Control Power Supply Wiring Diagram

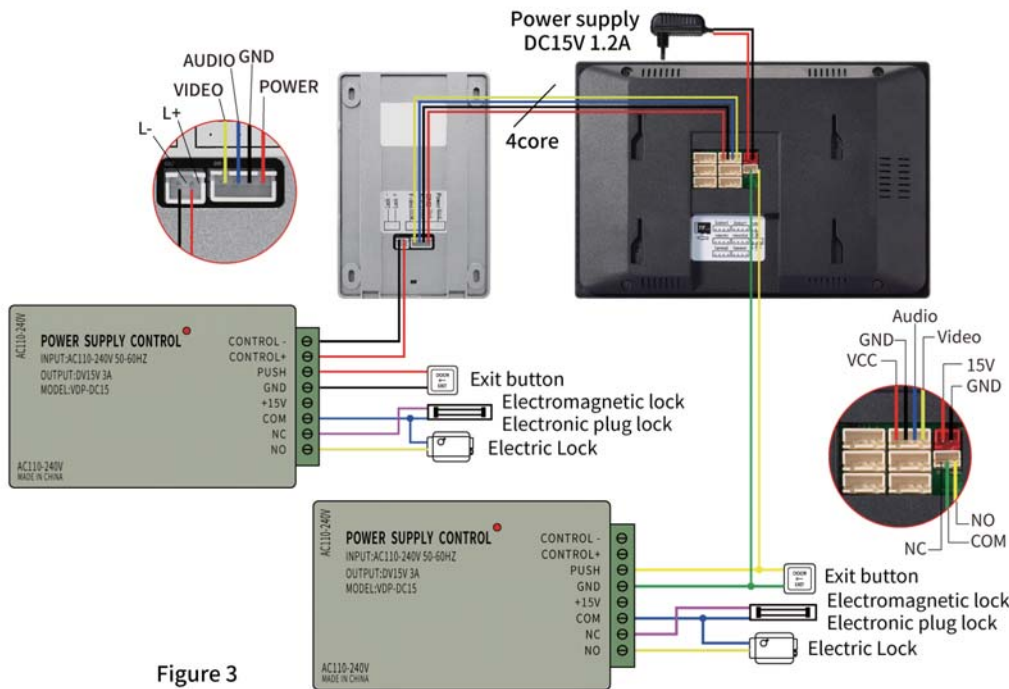


Figure 3

I. Indoor unit

I. Product parameters

Project	Specification
Display screen	IPS 10/7-inch touch screen
Resolution	1024*600
Power supply	DC15V 1.2A
Power	Standby : ≤3W Working : ≤10W
Connected indoor unit	RVV4
System support	4 indoor units + 2 outdoor units + 2 cctv
Intercom Communication	Support
Playback Review	Support
Motion detection	Support
Dual Lock Control	Support
CCTV Anti-tamper Alarm	Support
Ring tones	6 / Customized ringtones
Language	Chinese, English, German, French, Russian, Spanish, Arabic, Portuguese
Monitoring duration	30s
Intercom duration	60s
Video Recording Duration	26s (At home, Sleep mode) / 17s (Leave home)
APP	Tuya APP
Extended storage	Built-in 6Mb Storage Space + Expandable with a 128GB TF Card

II. System Information

A. Precautions before use

- Regarding the use and selection of wires, please refer to the following information (cable quality affects video and voice transmission distance)

①. RVV 4 core wire

Distance $\leq 30m$ ($4 \times 0.5mm^2$); Distance $\leq 60m$ ($4 \times 1.0mm^2$)



- #### ②. Cat.5e/Cat.6e pure copper 8-core network cable (two cores of the network cable are used as one core, single core cannot be used normally)

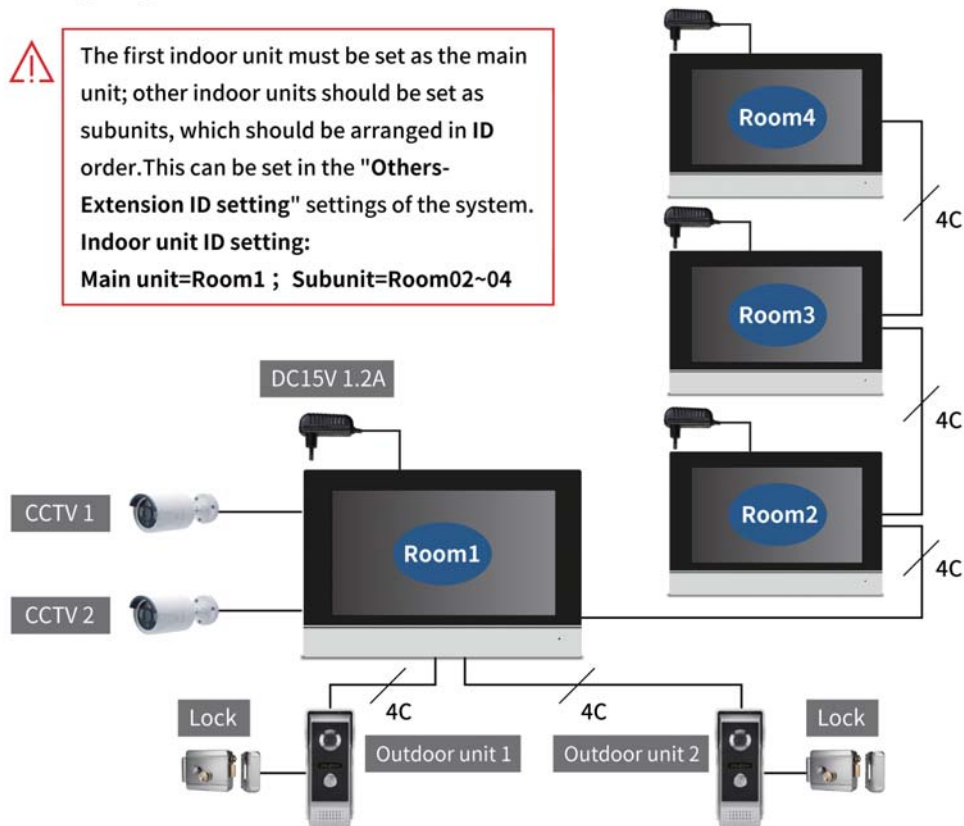


(Cat.5e/Cat.6e pure copper 8-core network cable distance $\leq 60m$)

B. Wiring Diagram



The first indoor unit must be set as the main unit; other indoor units should be set as subunits, which should be arranged in ID order. This can be set in the "Others-Extension ID setting" settings of the system.
Indoor unit ID setting:
Main unit=Room1 ; Subunit=Room02~04



II. Outdoor unit

I. Product structure

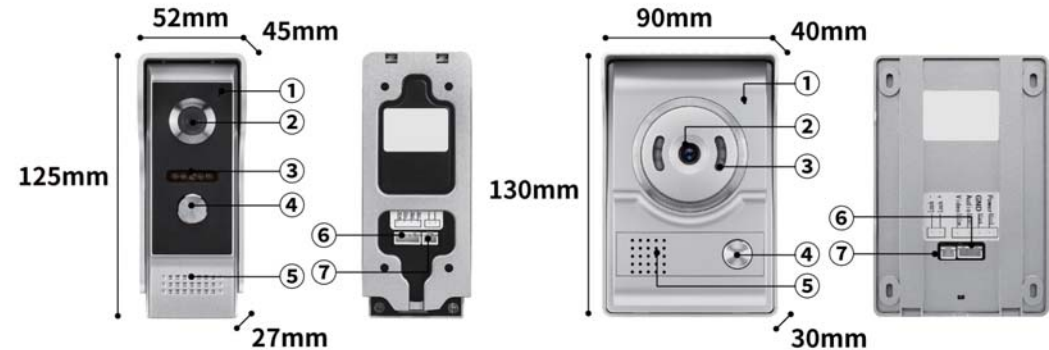


Figure 1

- ①. Microphone
- ②. Camera
- ③. Infrared night vision lamp
- ④. Call button
- ⑤. Speaker
- ⑥. 4P indoor unit connector socket
- ⑦. 2P port (Output 12V voltage signal)

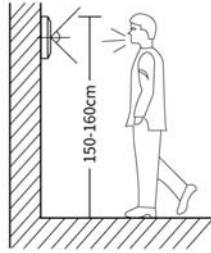
II. Product parameters

Project	Parameter
Camera	2.0MP
Night vision	Night vision illumination
Power supply	Indoor unit power supply
Power	Standby: $\leq 2W$ Operating: $\leq 5W$
Waterproof/Rainproof	Support
View Angle	120°
Night vision distance	0.2~3M
Operating temperature	-30°C~60°C
Installation	Surface mount
Material	Aluminum alloy/ABS plastic

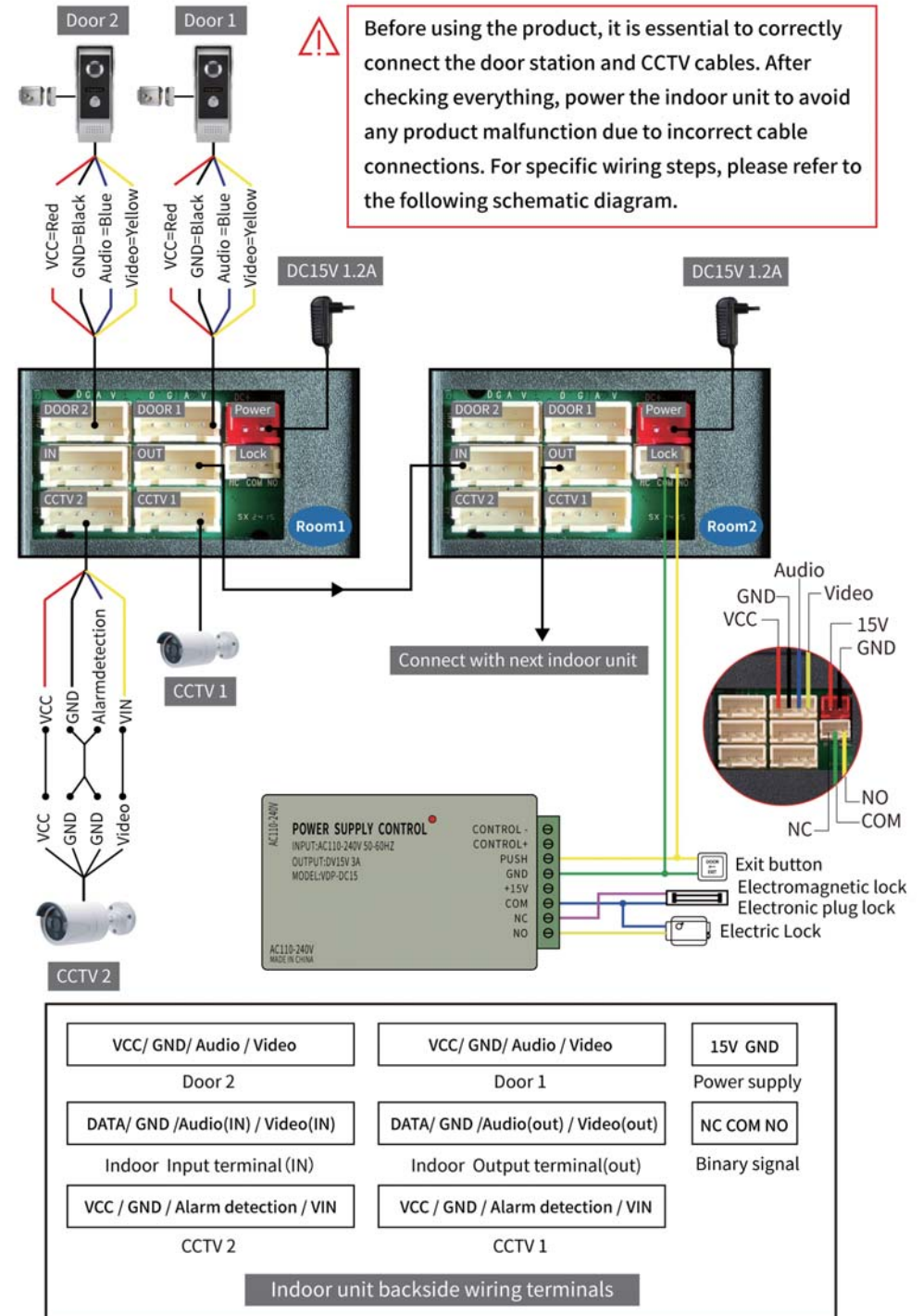
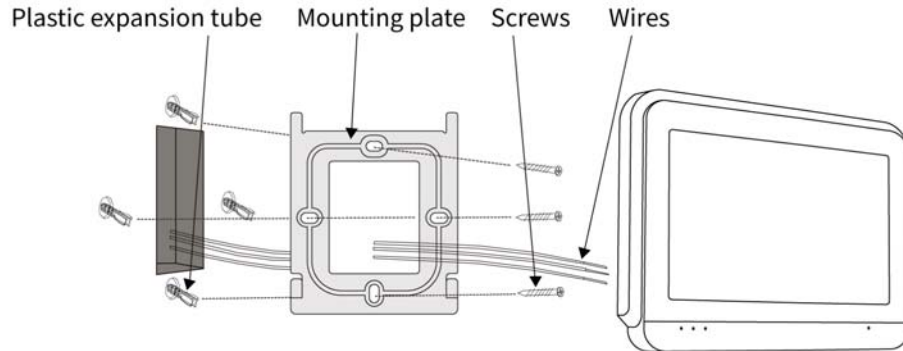
VIII. Indoor Unit Installation Instructions

Note:

- 1) .During installation, please stay away from strong radiation devices such as TVs, computers, and VCRs.
- 2) .Do not disassemble without permission to avoid electric shock.
- 3) .Do not drop, shake, or impact the device, as it may damage the components.
- 4) .Choose the best installation position with a distance of 150cm from the horizontal line of sight.
- 5) .Turn off the power before installation.
- 6) .Maintain a distance of more than 60cm from AC power to avoid interference, and keep away from water, magnetic fields, and chemicals.



How to install the indoor unit:



III.Quick Start Operation Guide

A.Power on the device and conduct a startup test

a).When the indoor unit is plugged into the standard power supply and powered on, the system will automatically start up. After a 20-second wait, it will transition to the main interface.



Figure 1



Figure 2

(Figure 1).Indoor unit startup loading interface;

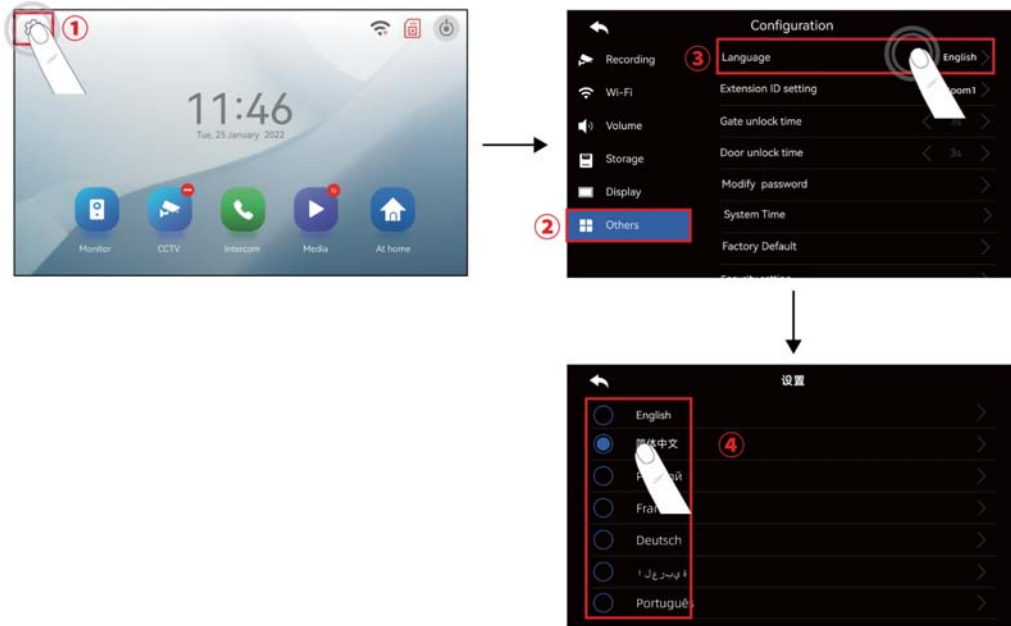
(Figure 2).Indoor unit has started up, transitioning to the main interface(Initial interface)

B.Language settings

a).Upon first entering the main interface, you should set your preferred language for the best experience.

The steps for setting the language are illustrated in the diagram below:

Setting path: ①Settings→②Others→③Language→④Select your preferred language



VII.Remove the bound device and delete the network

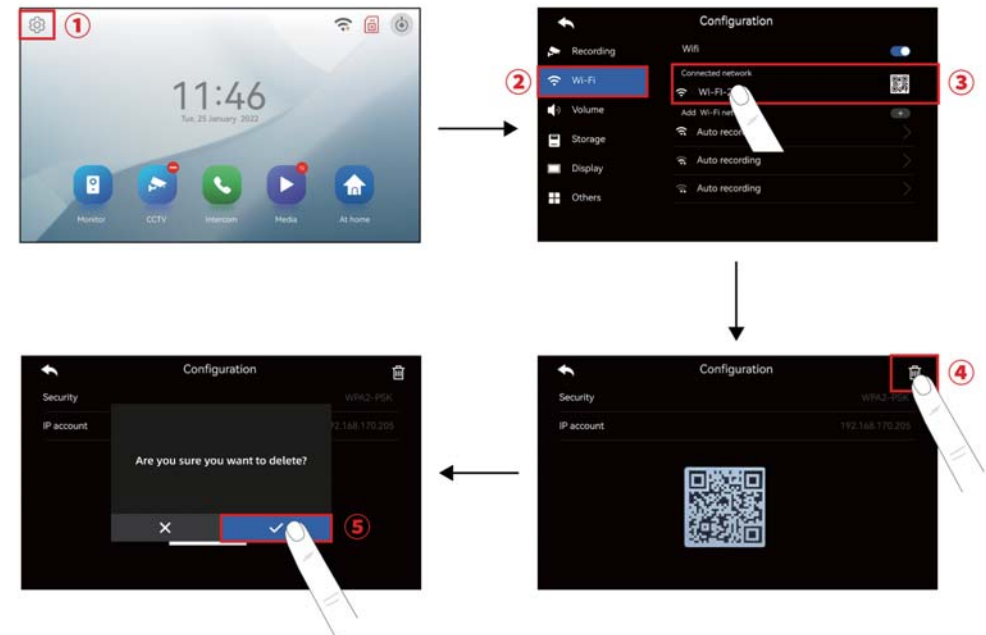
Remove the bound device

①. Long press the bound device → ②. A pop-up interface appears → ③. Select "Remove Device" → ④. Click "Confirm" → The indoor unit will automatically restart



Delete the network

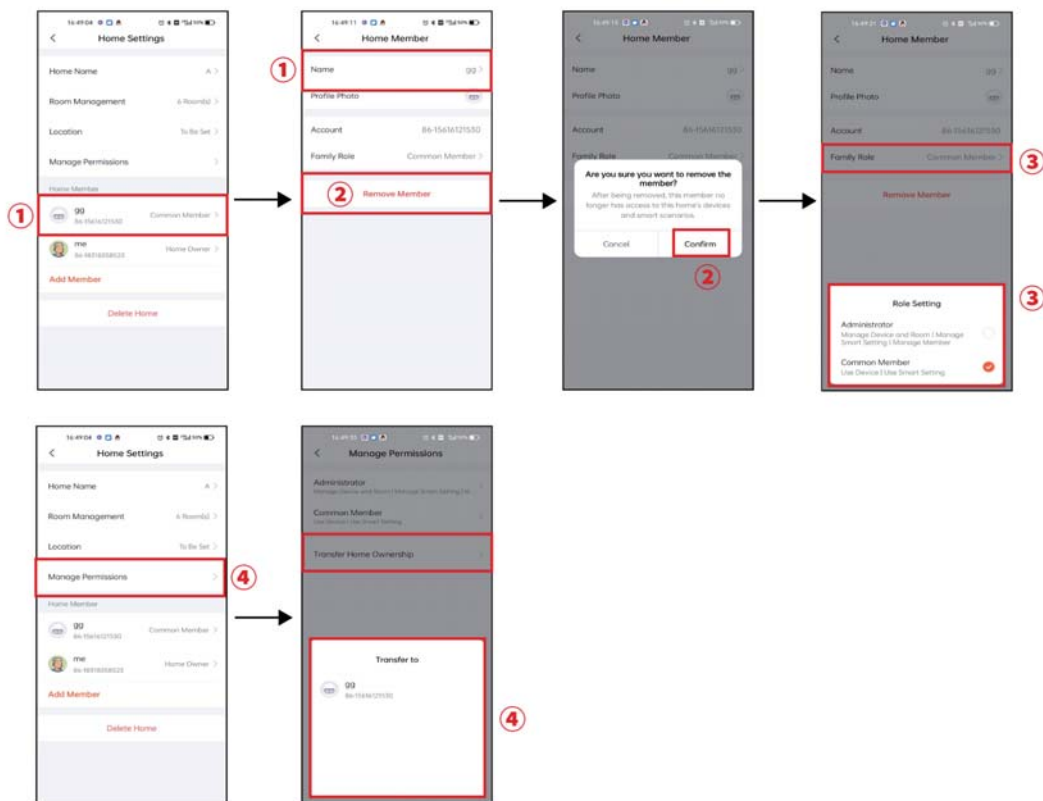
①Click "Settings"→②Wi-Fi →③Select the connected network →④. Click the delete icon →⑤. Confirm deletion





VI. How to Manage Home Members

- ①. You can edit the member's name;
- ②. You can remove the member;
- ③. You can edit the member's identity;
- ④. You can transfer the rights of the family owner.



C. Main interface function introduction

a). The interface indicates that the network has been paired and the weather forecast system has been turned on (Function needs to be activated)

Notes:

The following features will be introduced in detail in six major sections, labeled as i, ii, iii, iv, v, and vi

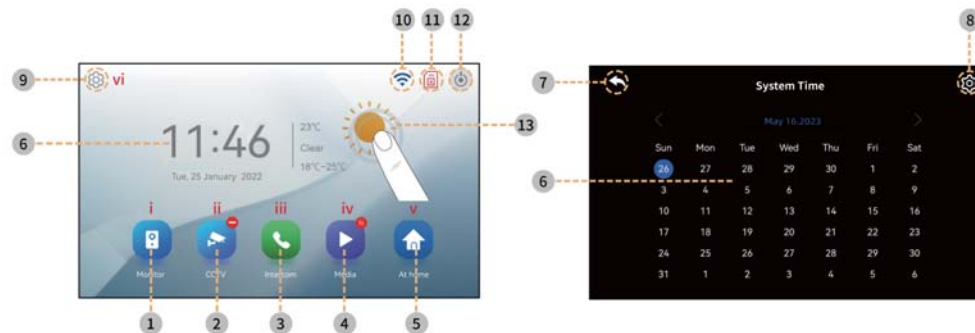


Figure 1

Figure 2

- 1 Monitor**
Function: Can take photos/videos, communicate with the outdoor unit, unlock the courtyard lock and room lock; can switch to view Outdoor Unit 1 and Outdoor Unit 2; can trigger the alarm function; can adjust the intercom volume/screen brightness/contrast/saturation
- 2 CCTV**
Function: Can take photos/videos, can adjust screen brightness/contrast/saturation. "—" indicates that the camera is not connected
- 3 Intercom**
Function: When multiple indoor units are connected in series, this feature allows for communication between the indoor units (requires setting indoor unit numbers)
- 4 Media**
Function: Review recorded videos/photos/motion detection/alarm messages, "N" indicates the presence of unread messages
- 5 Scenario mode**
Function: At home, Leave home, Sleep mode

At home

Leave home

Sleep mode
- 6 Time and Date (Figure 1, Figure 2)**
Function: Display year, month, day, and time, click to pop up a calendar, and you can set the year, month, and day
- 7 Return to the previous level (Figure 2)**
Function: Exit the calendar settings interface
- 8 Set Date (Figure 2)**
Function: Click to pop up the settings for year, month, day, and time
- 9 Setting**
Function: System function settings
- 10 Wi-Fi Status**
Function: Display Wi-Fi status

"Not connected to Wi-Fi"

"Connected to Wi-Fi"

"Connected to Tuya App"
- 11 TF Card Status**
Function: Display TF Card Status

"No TF Card Inserted"

"TF Card Inserted"
- 12 Standby Mode**
Function: Turn off the screen/Lock the screen
- 13 Weather Forecast**
Function: After correctly connecting to the Tuya App on the mobile device, the weather forecast feature can be activated.

i. [Monitor]

Click the monitoring button on the main interface to enter the surveillance interface, where the indoor unit's screen will display the real-time images from Door Station 1/Door Station 2.

Function path: Main Interface → Monitor

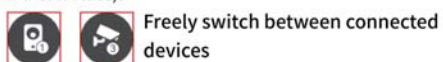


Figure 1

- The surveillance of the outdoor unit lasts for 30 seconds, and it will automatically return to the main interface when the surveillance time is up;
- While monitoring the outdoor unit, you can communicate with the outdoor unit, unlock, take photos, record videos, trigger the alarm system, and also adjust the indoor unit's screen parameters;
- When in the monitoring mode on the indoor unit, you can switch to view the real-time footage from Outdoor Unit 1/Outdoor Unit 2/CCTV1/CCTV2.

1 Outdoor unit/CCTV Surveillance Interface Switching

Function: Can switch back and forth to view other connected devices (switching is not possible if only one outdoor unit is connected or if the outdoor unit is in a call state).



Freely switch between connected devices

2 Courtyard Lock

Function: Open the lock connected to the outdoor unit (with adjustable duration ranging from 1 to 60 seconds, default value is 1 second).



Upon clicking the unlock button, an unlock icon and voice prompt will appear

3 Answer the call

Function: Press the answer button to engage in real-time communication with the outdoor unit.



"Answer the call" "Hang up the call"

4 Room Lock

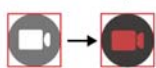
Function: Open the lock connected to the indoor unit (with adjustable duration ranging from 1 to 60 seconds, default value is 5 seconds).



Click the unlock button, and the unlock icon will pop up

5 Video Recording

Function: Record the surveillance footage from the outdoor unit for a duration of 26 seconds (requires the use of a TF card, and the recording can be reviewed later).



Click the record button, and the button will turn red, indicating the start of recording

6 Take a Photo

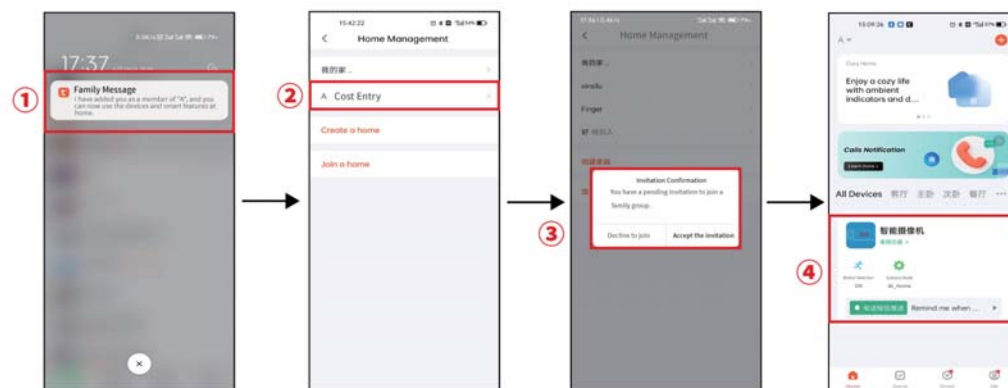
Function: Capture the current surveillance image from the outdoor unit (the photo can be viewed afterward).



Click the photo button, and the button will turn red, indicating the start of the photo capture

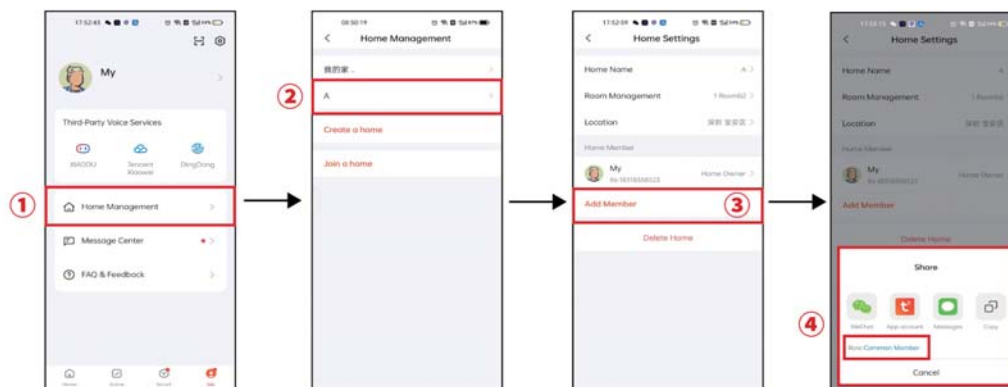
Operation on Phone "A"

- User "A" receives a message reminder from Tuya →
- Click to join the family →
- Accept the invitation →
- Successfully join the family group.



[Method 2]

- Enter the App → ① Home Management → ② Click on the home group you created → ③ Add member → ④ Select invitation method to send invitation code to phone user "A".



Note:

You can assign the new family member one of the following roles: regular member or family administrator.

Operation on Phone "A"

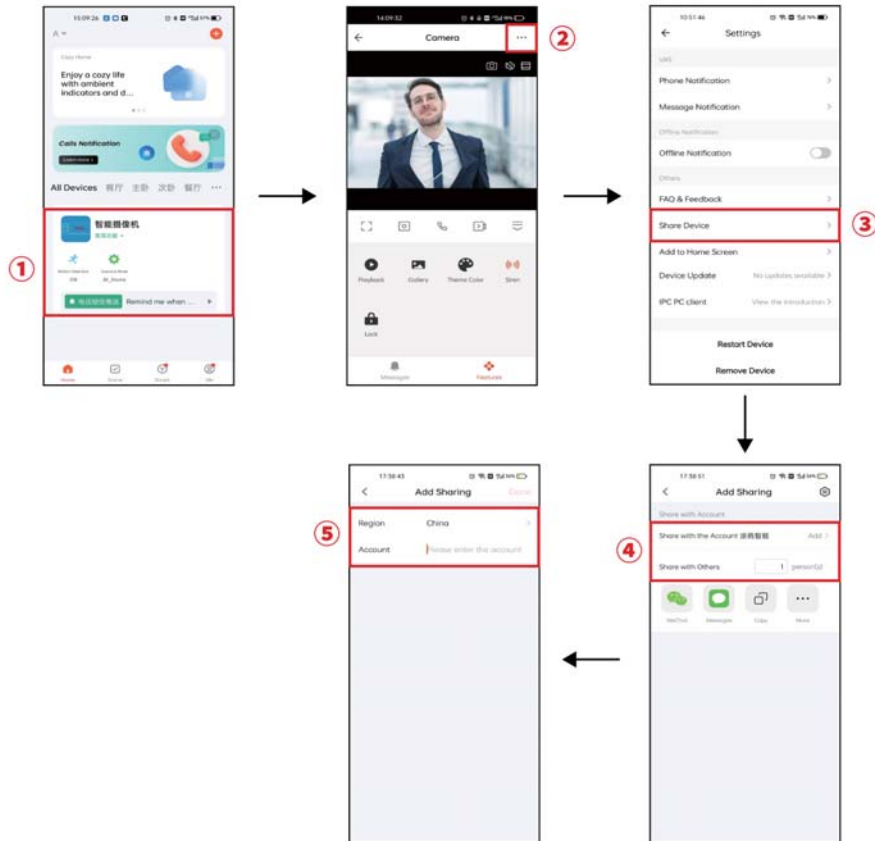
- Click on home management →
- Click on join a home →
- Enter the invitation code →
- Successfully join in.

V.Sharing Home Group with Other Phone Users

There are two ways to share your device with other phone users:

[Method 1]

Enter the App → ①Select the device you want to share, and click on monitoring mode → ②Click on the top right corner for settings → ③Share device → ④Add sharing → ⑤Enter the region/account.

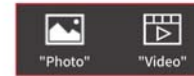


7 Return to the previous level

Function: Exit the surveillance interface.

8 Motion Detection Status

Function: Select the motion detection storage method as "Photo" or "Video".



9 Recording Status

Function: Display the recording mode as "Auto Recording" or "Manual Recording".



12 Adjust the intercom volume/screen color (Figure 2)

Open the adjustment menu by clicking on any monitored area of the screen.

Function path: Monitor → Tap anywhere on the screen → Adjust the value.

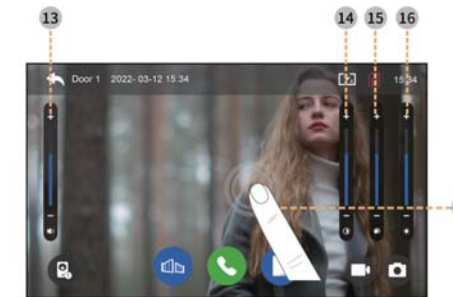


Figure 2

a). The surveillance camera at the outdoor unit a continuous monitoring time of 30 seconds. When the surveillance time is up, it will interrupt the screen adjustment and switch back to the main interface;

b). You can adjust the volume for the intercom call, as well as the screen brightness, contrast, and saturation.

13 Adjust the intercom volume

Function: Adjust the intercom call volume for any specific outdoor unit. This setting controls only the real-time display of one outdoor unit. If there are two outdoor units connected, they will need to be set individually, with a range from 1 to 20, and the default value is 10.

14 Adjust the screen contrast

Function: Adjust the contrast of the indoor unit's screen during surveillance. This setting will only control the real-time display of one outdoor unit. If there are two outdoor units connected, they will need to be set separately, with a range from 1 to 20, and the default value is 10.

15 Adjust the screen saturation

Function: Adjust the saturation of the indoor unit's screen during surveillance. This setting will only control the real-time display for one outdoor unit. If there are two outdoor units connected, they will need to be set separately, with a range from 1 to 20, and the default value is 10.

16 Adjust the screen brightness

Function: Adjust the brightness of the indoor unit's screen during surveillance. This setting will only control the real-time display for one outdoor unit. If there are two outdoor units connected, they will need to be set separately, with a range from 1 to 20, and the default value is 10.

ii. [CCTV]

In the main interface, tap the CCTV button to enter the CCTV surveillance interface, where the indoor unit's screen will display the real-time footage of CCTV1/2.

Function path: Main Interface → CCTV

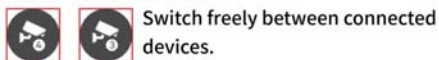


Figure 1

- The duration for viewing the CCTV surveillance interface is set to 60 seconds, after which it will automatically return to the main interface.
- While monitoring, you have the option to take photos, record videos, and also adjust the parameters of the indoor unit's screen.
- During the monitoring state, you can switch between viewing the real-time footage of CCTV1 and CCTV2.

1 Switch between CCTV interfaces

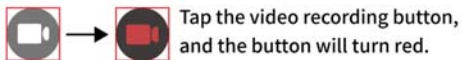
Function: You can switch to view the connected CCTV devices (if only one device is connected, switching is not possible).



Switch freely between connected devices.

2 Video recording

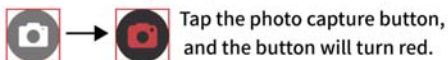
Function: Record the CCTV surveillance footage for a duration of 60 seconds (requires the use of a TF card, and the recorded footage can be reviewed).



Tap the video recording button, and the button will turn red.

3 Take a photo.

Function: Take a snapshot of the current CCTV surveillance image (the photo can be viewed).



Tap the photo capture button, and the button will turn red.

4 Return to the previous level

Function: Exit the surveillance interface.

5 Motion Detection Status

Function: Select the motion detection storage method as "Photo" or "Video".



6 Recording status

Function: The CCTV surveillance feature only supports "manual recording" and "manual snapshot".

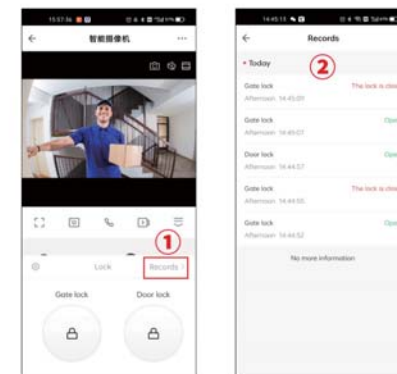


7 TF Card Status

Function: Display TF Card Status.

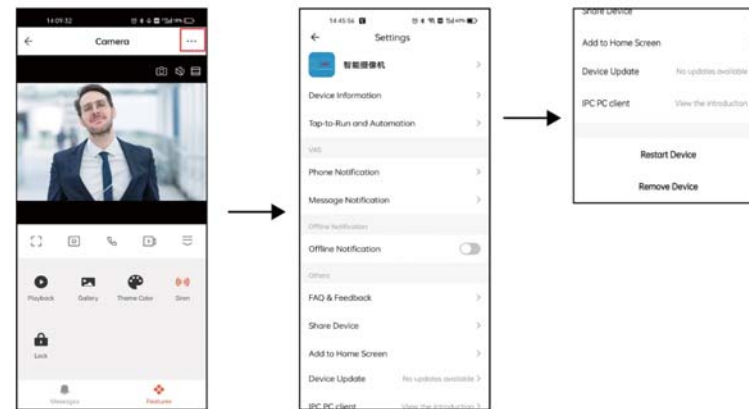


⑦. You can switch to view the devices that have been bound at any time, and you can modify the names of the bound devices for easier identification.



⑧. The mobile app can unlock the lock connected to both the outdoor and indoor units, and it can also view the lock opening records.

[Settings]



A. Device information and modify device name;

B. Storage settings: a). Display the memory capacity of the indoor unit's TF card;

b). Format the entire content of the TF card in the indoor unit;

C. Switch offline reminder;

D. Share device: Support sharing devices with other phone users;

E. Add to Home Screen: Add the monitoring shortcut to the mobile phone's home screen for quick access;

F. Device Upgrade: Check the current version of the Tuya app and set it to auto-upgrade;

G. Restart device: Control the indoor unit device to restart from the phone;

H. Remove device: Unbind the indoor unit from the phone.

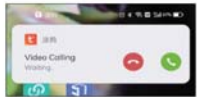
IV.Tuya App Quick Start Guide



①. When the mobile app is on the monitoring interface, the indoor unit will be temporarily locked and unable to perform any operations.



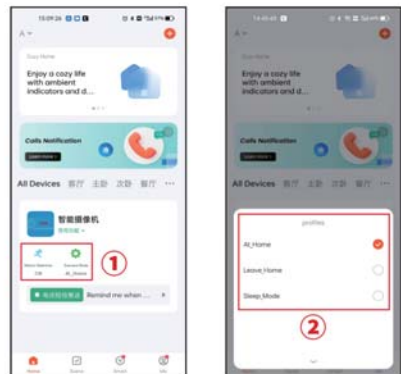
②. When the mobile app is on the monitoring interface for more than 2 minutes, the system will automatically exit the monitoring mode.



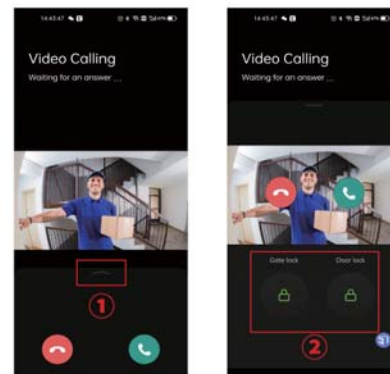
③. When a visitor calls the door phone, the mobile phone will receive a push notification.



④. When the door unit triggers motion detection, the mobile phone will receive a push message.



⑤. You can use the mobile app to remotely activate or deactivate the motion detection of the outdoor unit; you can also remotely control the scenario mode of the indoor unit.



⑥. When a visitor calls the outdoor unit, you can swipe up the arrow to expand the unlock button, allowing you to unlock directly without answering the call.

8 Countdown

Function: The surveillance duration is set to 60 seconds, and upon the end of this time, it will automatically redirect to the main interface.

8 Adjust the screen color

Open the adjustment menu by clicking on any monitored area of the screen.

Function path: CCTV→Tap anywhere on the screen→Adjust the value.



Figure 2

- a). The surveillance camera at the CCTV a continuous monitoring time of 60 seconds. When the surveillance time is up, it will interrupt the screen adjustment and switch back to the main interface;
- b). You can adjust the screen brightness, contrast, and saturation.

9 Adjust the screen contrast

Function: Adjust the contrast of the screen while monitoring CCTV. This setting only controls the real-time image of one CCTV unit. If two CCTV units are connected, they will need to be set separately, with a range from 1 to 20, and the default value is 10.

10 Adjust the screen saturation

Function: Adjust the saturation of the screen while monitoring CCTV. This setting will only control the real-time image for one CCTV unit. If two CCTV units are connected, they will need to be set individually, with a range from 1 to 20, and the default value is 10.

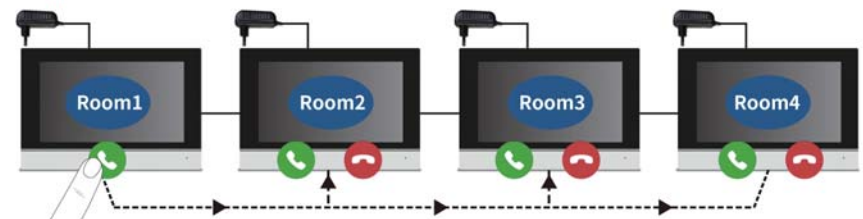
11 Adjust the screen brightness

Function: Adjust the brightness of the screen while monitoring CCTV. This setting will only control the real-time image for one CCTV unit. If two CCTV units are connected, they will need to be set separately, with a range from 1 to 20, and the default value is 10.

iii. [Intercom]

When connecting multiple indoor units, you need to set internal line ID to enable intercom communication between the units (**Main unit=Room1 ; Subunit=Room02~04**). The dialing duration is 30 seconds, and the conversation duration is 60 seconds.

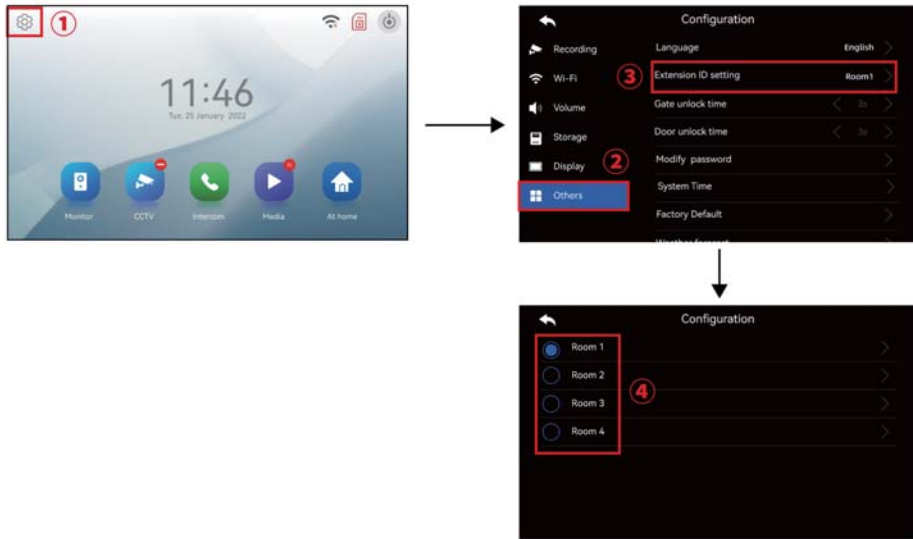
Function path: Main Interface→Intercom



a).Extension ID setting

The steps are shown below

Setting path: ①Settings→②Others→③Extension ID setting→④Select ID



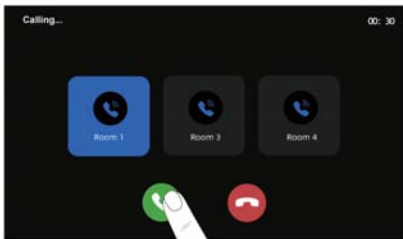
b).Function demonstration



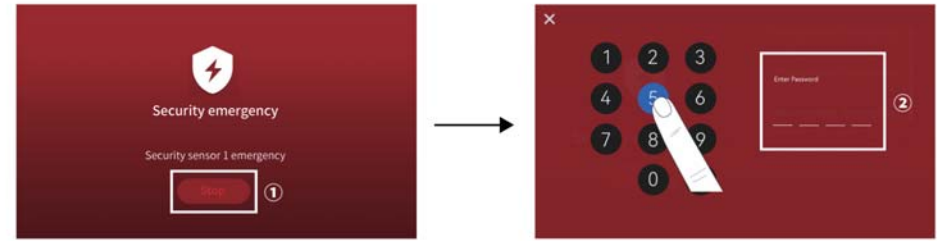
①.Select the indoor unit you need to make an internal call to→Click the green button to make the call.



②.During the call, wait for the other party to answer. The dialing duration is set to 30 seconds. If the time expires, the call will automatically be disconnected. You also have the option to manually hang up the call.



③.Upon receiving an internal line call, you have the option to either answer or hang up the call.



③.When the alarm function is activated, if the CCTV is removed, the indoor unit will trigger the alarm function.

④.To disarm the alarm, you need to reconnect the CCTV and then enter the [security password]

[Security setting] :It means that the indoor unit is connected to the CCTV and the alarm function is enabled. When the CCTV is unplugged, the indoor unit will activate the alarm function. To disarm the alarm, you need to reconnect the CCTV and enter the [security password]. You can set up an automatic recording function, but this must be turned on before the alarm function is activated. The recorded video files will be stored in the browsed files;



①.When the message "Please check the status of the security sensor" appears, you should check if the CCTV wiring is correct.

②.You need to activate the automatic recording function first; ③.Then enable the alarm function.

[System Time] :The time is in a 24-hour format date format(After completing the connection to the Tuya app, the system will automatically synchronize and update to the local time zone);

[Factory Default] :Click "Confirm," and the indoor unit will clear all the set options and revert to the initial options;

[Weather forecast] :This feature needs to be connected to the Tuya app before it can be enabled;

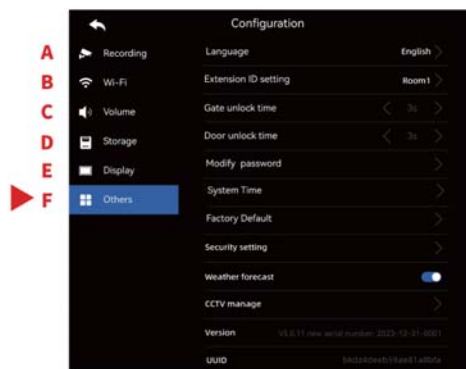
[CCTV manage] : a).You can connect to the CCTV of the corresponding brand by manually entering the information;

b).When the CCTV and the indoor unit are connected to the same network, you can directly click on the "+" sign to search for and register to add;

[Version] : Display the current software version;

[UUID] :You can set the push delay for the Tuya app phone call, which means when the outdoor unit calls, the indoor unit will ring, and the push to the Tuya app will be after 0 to 25 seconds.

F.[Others]



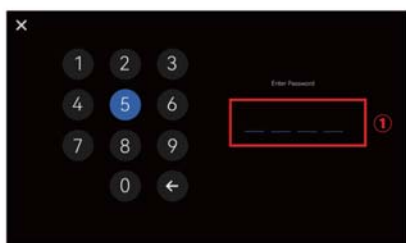
[Language]: It supports eight languages, which are Chinese, English, French, Russian, German, Arabic, Portuguese, and Spanish;

[Extension ID setting]: It indicates the ID number of the local device, with a range from 1 to 4; Room1 represents the main unit, and Room2 to 4 represent the sub-units. Each household can support up to 4 indoor units, and only the indoor unit with the number 1 can perform network pairing;

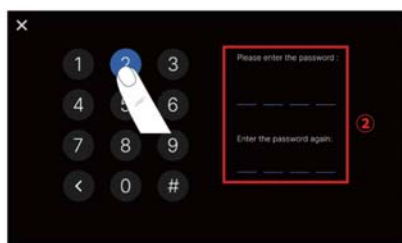
[Gate unlock time]: It refers to controlling the time for unlocking the lock connected to the outdoor unit, with a range of 1 to 60 seconds, and the default is 1 second;

[Door unlock time]: It refers to controlling the time for unlocking the lock connected to the indoor unit, with a range of 1 to 60 seconds, and the default is 5 seconds;

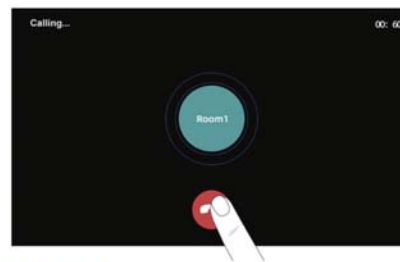
[Modify Password]: It is used for CCTV security monitoring. When the security alarm is triggered, you need to enter a password to disarm the alarm. The initial password (old password) is 1234 (you can change the password, and after a factory reset, the password will revert to the initial password);



①. Enter the initial password (old password) 1234.



②. Change the 4-digit security password.



④. After answering the call, the caller's ID is displayed in the center of the screen. The call duration is 60 seconds. When the time is up, the call will automatically be disconnected. You also have the option to manually hang up the call.

iv. [Media]

In the main interface, click the "Media" button to enter the file list

Function path: Main Interface → Media

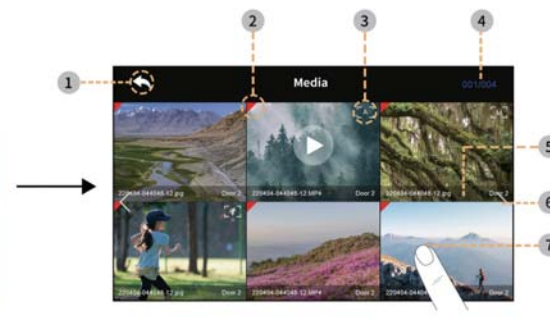


Figure 1

- Store captured snapshots, video recordings, motion detection, CCTV, alarm records, and other recorded files;
- The "Media" icon on the main interface will display the number of unread messages;
- The outdoor unit automatically records video for a duration of 26 seconds, motion detection records video for 60 seconds, and CCTV records video for 60 seconds.

① Return to the previous level

Function: Exit the media interface.

② Unread messages

Function: Files with a red "▶" are marked as unread messages.

③ File status

Function: Four types of icons will be displayed, representing:



①. Manual recording:

Files generated by actively clicking to take a photo or record a video during the surveillance process or a visitor call process.

②. System auto-recording:

In the settings, if you choose automatic video recording, when a visitor calls, the system will automatically capture photos or record videos, resulting in the generated files.

③. Motion detection recording:

Enable motion detection and when motion is detected, take snapshots or record videos, resulting in the generated files.

④. Alarm recording:

Enable CCTV alarm recording, when the CCTV is disconnected, the indoor unit will activate an alarm bell, report an emergency, and record video, resulting in the generated files.

④ Page number

Function: Display the total number of pages for the file and the current page number.

5 File type

Function: Each file will display key information such as the capture time, file format, and source of the file

6 Turn the page

Function: Tap to turn pages left or right

7 .View the file

a).Tap to view the photo or video, you can turn pages to view more, and you can also delete that file.

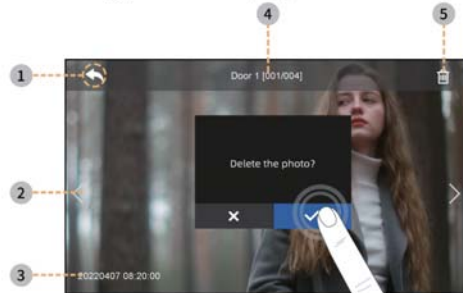


Figure 2

1 Return to the previous level

Function: Exit the view interface.

2 Turn the page

Function: Tap to turn pages left or right.

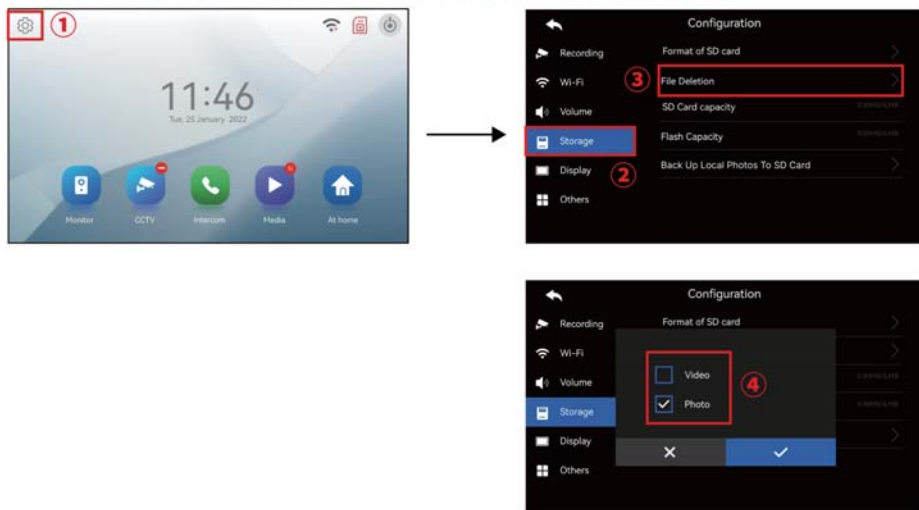
3 File information

Function: Record the date and time of file registration.

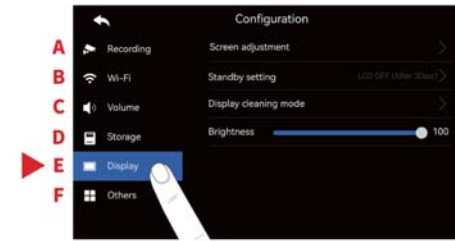
b).Batch delete files

If you need to batch delete photo files or video files, you can follow these steps to complete the operation:

Setting path: ①Settings→②Storage→③Files Deletion→④Video or Photo



E. [Display]



[Screen Adjustment] : It indicates that the background adjusts the brightness, contrast, and saturation of the indoor unit's monitor screen, with a range of 0 to 20, and the default is 10 (this function only adjusts the image captured by the outdoor unit 1);

[Standby setting] : This feature has two modes to choose from:LCD off(After 30sec) and Screen Saver;

LCD off(After 30sec):It indicates that if there is no screen operation within 30 seconds, the system will automatically lock the screen and enter standby mode;

Screen Saver:It indicates that photo playback will occur after a period of no screen operation;

A).Screen Saver time:You can choose to play in a loop or set a time period to activate the screen lock;

B).Night mode:After enabling this mode, you can set a time period during which the screen will be locked, and the screen brightness will be reduced;

C).List of display:You can choose the content to play after the screen is locked. When media is selected, the system will display the latest frame of a photo or a recorded video from the browsed files;

D).Image of background :It indicates three choices: **a) , b) and c)**

a).No Back ground:After locking the screen, it will be black with no background;

b).Basic image:After locking the screen, the system's built-in landscape photos will be played;

c).SD Card Image(**Digital Photo Frame feature**) :After locking the screen, the system will play the designated photos stored on the TF card (you can use a card reader to access the TF card, find the folder named [picture], place .jpg format images with a size of 1024*600 into this folder, exit the card reader, and insert the TF card into the indoor unit to activate the SD wallpaper standby feature);

Note:

If the motion detection feature is enabled, the indoor unit will not activate the screen lock function after the screen turns off.

[Display cleaning mode] :If the indoor unit's screen is dusty or has stains, you can select the cleaning mode. Within 30 seconds, the screen will be locked, and at this point, you can use a cleaning tool to clean the indoor unit's screen;

[Brightness] :It indicates adjusting the overall brightness of the indoor unit's screen, with a range of 0 to 100;

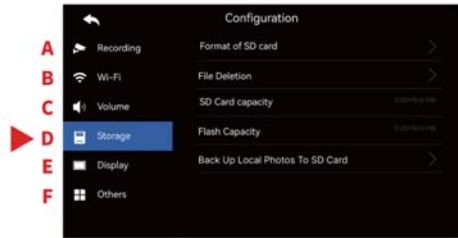
[Doee1/2 ring]: You can set three different time periods to control the volume of the ringtone, the call ringtone, and the duration of the ring time, respectively;

- a).Schedule: Time periods are adjustable;
- b).Ring time: Indicates controlling the duration of the ring time, with a range of 1 to 20 seconds;
- c).Ring mode: It is divided into standard ringtones and custom ringtones;
 - i.Standard ringtone refers to the default ringtones in the indoor unit;
 - ii.Custom ringtones indicate that users can use MP3 music format as the call ringtone. (You can use a card reader to read the TF card, find the folder named **[music]**, put the downloaded MP3 music files into this folder, exit the card reader, take out the TF card and insert it into the indoor unit, and the indoor unit will display the music ringtones that have been read);
- d).Ring select: Select any one as the call ringtone;
- e).Ring volume: Set the ringtone volume with a range of 0-4; when the ringtone volume is set to 0, the indoor unit will not ring;

[Touch tone]: It indicates the option to enable or disable the touch screen sound that plays when the screen is touched;

[Intercom Ring tone]: It indicates the selection of ringtones and the volume level for internal line calls.

D. [Storage]



[Format SD card]: Clicking "Confirm" will format the TF card. If a TF card is not inserted into the indoor unit, clicking will have no effect;

[Files Deletion]: You can individually delete photos or videos from the files being browsed;

[SDCard capacity]: Display the available and total space of the current TF card;

[Flash Capacity]: The system comes with 6MB of storage space, which is limited to storing photos only;

[Back Up Local Photos To SD Card]: Copy the photos stored in the built-in system storage to the TF card.

v. [Scenario mode]

The feature has a total of 3 icons: At home, Leave home, Sleep mode



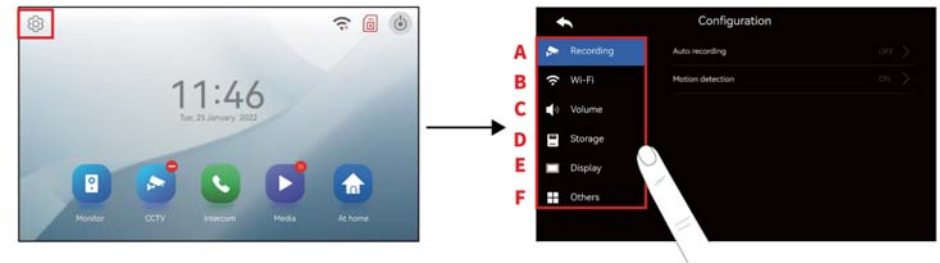
[At home]: Normal operation mode: when a visitor calls the outdoor unit, both the indoor unit and the outdoor unit will ring simultaneously;

[Leave home]: When a visitor calls the outdoor unit, the outdoor unit will play a voice prompt saying "Please leave a message after the tone," while the indoor unit will be on mute and will not ring.

[Sleep mode]: When a visitor calls the outdoor unit, the outdoor unit will ring, while the indoor unit will be muted and will not ring;

vi. [Setting feature introduction]

The settings list includes a total of 6 features, which are: A. Recording, B. Wi-Fi, C. Volume, D. Storage, E. Display and F. Others. Please provide the specific functions for me to assist you further.



A. [Recording]

The feature has 2 options, which are: Auto recording and Motion detection;

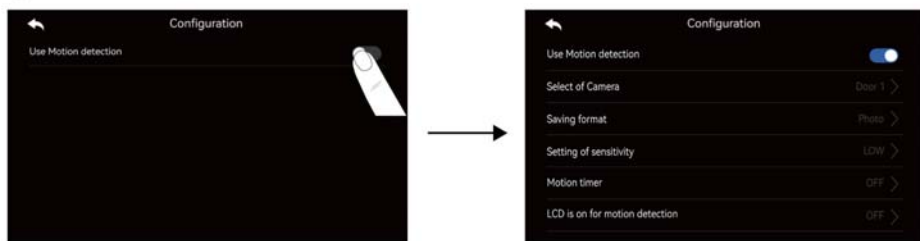
[Auto recording]

- a). You can choose between photo mode or video mode. Once this feature is enabled, the system will automatically record when a visitor calls the outdoor unit;
- b). The indoor unit system has an internal storage capacity of 6MB, which only supports photo mode. You can use the photo mode without a TF card. However, if you need to use video recording, you must insert a TF card;



【Motion detection】

- a). When motion detection is turned on, if an object moves in front of the device while the indoor unit is in standby mode, it will trigger the motion detection;
- b). You can set the sensitivity level for when the motion detection is triggered;
- c). You can independently set the start time for motion detection;
- d). You have the option to turn on an LCD is on for motion detection;
- e). Motion detection can only be executed on one connected device, you need to select the outdoor unit 1/2, CCTV 1/2 for motion detection execution;
- f). Motion detection can store data as either photos or videos. The indoor unit system comes with an internal storage capacity of 6MB, which is only sufficient for photo storage. You can use the photo mode without a TF card, but if you wish to record videos, you will need to insert a TF card into the system;



【Use Motion detection】: Indicates turning motion detection on or off;

【Select of Camera】: Select the device to trigger motion detection (Outdoor Unit 1/2, CCTV 1/2), only one connected device can be executed at a time;

【Saving format】: Photo and video modes refer to the options available when motion detection is triggered: the system can be set to take a snapshot (photo mode) or to record a video (video mode);

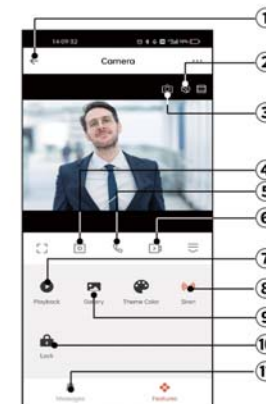
【Setting of sensitivity】: Indicates the sensitivity level for triggering motion detection, with three settings available: high, medium, and low;

【Motion timer】: You can set the time to activate motion detection, and motion detection will only be triggered during this specified time period;



05

Once connected, click ① "Finish" to complete the setup and automatically switch to the monitoring screen.



①. Hang up/Exit;

② **Speaker**: Activate to hear the outdoor unit's sound;

③ **Switching Channels**: In the call/monitor mode, pressing the button can switch to other devices;

④ **Take photo**: In call/monitoring mode, click the camera icon to take a snapshot;

⑤ **Microphone**: When the doorbell unit is pressed, the phone receives the message and enters the APP. Simply click the microphone button to communicate with the door unit;

⑥ **Record**: In call/monitoring mode, press the button to start recording;

⑦ **Playback**: Make sure the indoor unit has a TF card inserted. When a visitor calls the doorbell unit, the APP will record a video, which can be viewed in the playback function;

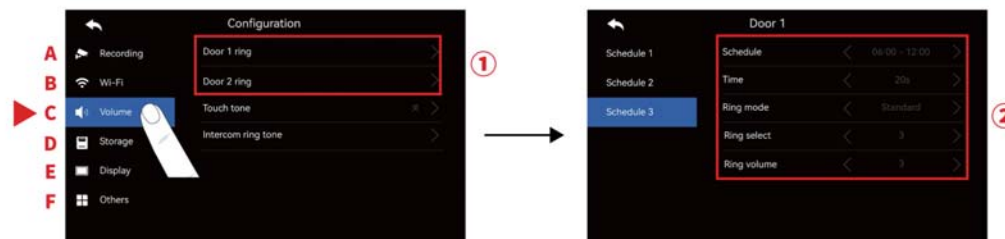
⑧ **Siren**: Single-click to activate the indoor unit's alarm function;

⑨ **Album**: Snapshots and videos will be stored in the album. Click to view;

⑩ **Unlock**: In the call/monitor mode, a single click on the unlock icon can open the lock connected to the outdoor unit/indoor unit;

⑪ **Messages**: Store messages such as visitor calls, motion detection triggers, unlocking events, etc;

C.【Volume】



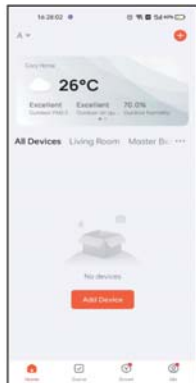


03
Connecting to the device,
please wait...



04
Once connected, click
① "Finish" to complete
the setup and
automatically switch to
the monitoring screen.

B). Method Two (Scan the "Add Device")



01



02
Click on "+" at the top right
corner and select "Scan".



03
Scan the activated Tuya QR
code on the indoor unit
with your mobile phone.



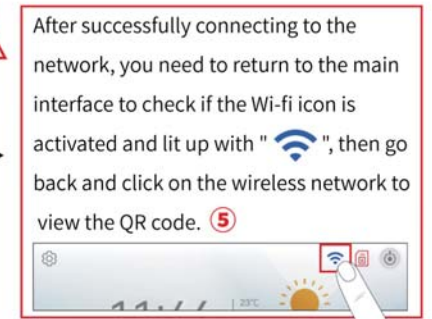
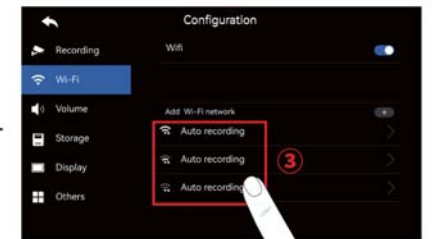
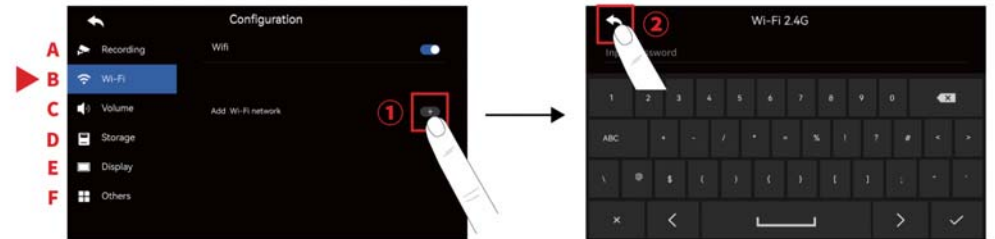
04
The phone will enter the
network configuration mode,
wait for the network
configuration to complete.

[LCD is on for motion detection]: If this feature is not enabled, when motion detection is triggered, the system will record video or capture snapshots in the background, and the indoor unit screen will not light up; if the feature is enabled, when motion detection is triggered, the indoor unit screen will light up, displaying the real-time image at the entrance, and the system will record video or capture snapshots.

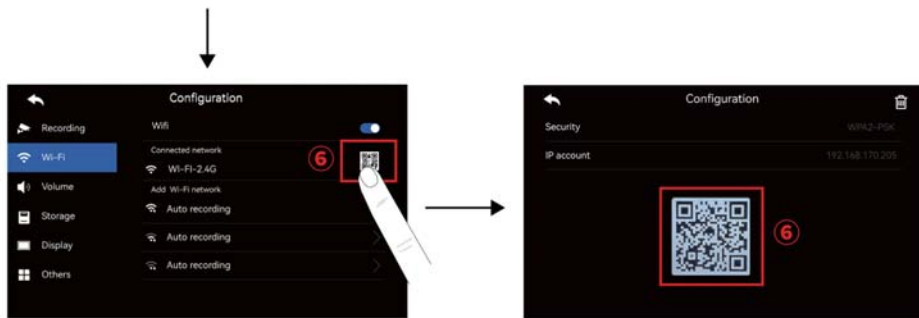
B. [WI-FI]

The indoor unit needs to be connected to a functional Wi-Fi network (hereinafter referred to as Wi-Fi). Follow the operational steps to complete the connection:

① Tap "Add Network" → ② A prompt will appear asking for the "Wi-Fi Account". At this point, press the back button, and the network list should refresh. → ③ Locate the desired Wi-Fi network and proceed to connect to it. → ④ Enter the correct password for the Wi-Fi network and tap "Connect". → ⑤ Waiting for connection, after the connection is completed, return to the main interface to check the network status → ⑥ Then click on the WI-FI QR code.



After successfully connecting to the network, you need to return to the main interface to check if the Wi-fi icon is activated and lit up with "Wi-Fi", then go back and click on the wireless network to view the QR code. ⑤



[Download and register the Tuya app]

- a). For IOS system: Search "Tuya APP" in the "Apple store" application market and download; For Android system: Search "Tuya APP" in the "Software Store" application market and download;
- b). Or, scan the QR code as listed below by your phone, select the corresponding country, and download;
- c). After completing the account registration, log in.

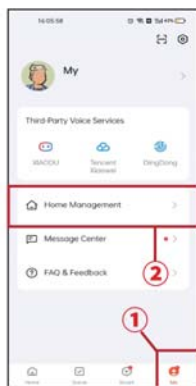


Scan QR code and Downloading the APP for Apple/Android Systems



01 Users can choose to log in using their phone number, email, QQ account, or WeChat

[Creating a home group operation]



01 Open the APP and click on ① "My", then select ② "Home Management".



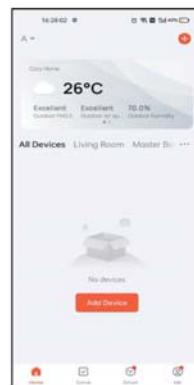
02 Click on ① "Create a Home".



03 Enter ① "Home Name" and select a "City Location". ② Choose any room location and click "Save", then click "Finish".



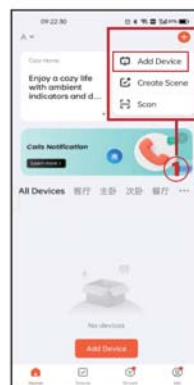
04 Go back to the homepage, click on ① "Homepage" in the top left corner, and ② select the newly created "Home Name".



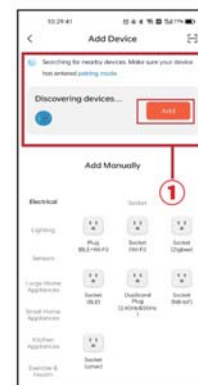
05 The home group is now created.

[Tuya App Pairing Operation]

A). Method One (Search for "Add Device")



01 Click on "+" at the top right corner and select "Add Device".



02 The system automatically searches for nearby devices that can be added, discovers the device, ① click to add.

FCC warning statements:

This equipment has been tested and found to comply with the limits for a Class B digital device, pursuant to part 15 of the FCC Rules. These limits are designed to provide reasonable protection against harmful interference in a residential installation. This equipment generates, uses and can radiate radio frequency energy and, if not installed and used in accordance with the instructions, may cause harmful interference to radio communications. However, there is no guarantee that interference will not occur in a particular installation. If this equipment does cause harmful interference to radio or television reception, which can be determined by turning the equipment off and on, the user is encouraged to try to correct the interference by one or more of the following measures:

- Reorient or relocate the receiving antenna.
- Increase the separation between the equipment and receiver.
- Connect the equipment into an outlet on a circuit different from that to which the receiver is connected.
- Consult the dealer or an experienced radio/TV technician for help.

Caution: Any changes or modifications to this device not explicitly approved by manufacturer could void your authority to operate this equipment.

This device complies with part 15 of the FCC Rules. Operation is subject to the following two conditions: (1) This device may not cause harmful interference, and (2) this device must accept any interference received, including interference that may cause undesired operation.

The device has been evaluated to meet general RF exposure requirement This equipment complies with FCC radiation exposure limits set forth for an uncontrolled environment.

This equipment should be installed and operated with minimum distance 20cm between the radiator & your body.