

120*150mm

INSTRUCTION MANUAL



Ultrasonic Humidifier

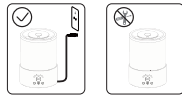
READ AND SAVE THESE INSTRUCTIONS

CARE & MAINTENANCE

Do not submerge unit into water to avoid risk of electric shock. Do not put fingers, hands, or any object into the unit while operating. Do not attempt to adjust or repair the unit. Do not touch the water while unit is operating. Do not fill water through the Mist Outlet or the Air Outlet. Do not place the unit near heat sources or direct sunlight. Use two hands when moving your humidifier. Use this unit only as intended as described in this manual.

TO CLEAN:
Empty water from the Water Tank away from the Air Outlet. The Ceramic Disc should not come in contact with any hard or sharp objects. To remove possible buildup, rinse with a white vinegar and water solution. Dry thoroughly with a soft cloth. Do not use strong cleaning agents.

AFTER USING THE HUMIDIFIER



- Always disconnect from a power source by pulling out the plug when not in use.
- DO NOT attempt to repair or adjust any electrical or mechanical functions on this humidifier.

This appliance is not intended for use by persons (including children) with reduced physical, sensory or mental capabilities, or lack of experience and knowledge, unless they have been given supervision or instruction concerning use of the appliance by a person responsible for their safety. Children should be supervised to ensure that they do not play with the appliance. If the supply cord is damaged, it must be replaced by the manufacturer, its service agent or similarly qualified persons in order to avoid a hazard. Unplug the appliance during filling and cleaning.

5

FUNCTION CHARACTERISTICS

Power button:

Press 1st time: Power on, unit work with Low mist, "L" indicator light stays on.
Press 2nd time: Power off, unit stop working.

Mist button:

Note: only power is on, mist button can work.

Press 1st time: unit work with Middle mist, "M" indicator light stays on.
Press 2nd time: unit work with High mist, "H" indicator light stays on.
Press 3rd time: unit work with Low mist, "L" indicator light stays on.
Continuous cycle
Press and hold for 3S to enter sleep mode. The colored lights are off and the gear indicator light is off.

Light button:

Note: only power is on, light button can work.

Press 1st time: eight-color light cycle.
Press 2nd to 9th time: Single-color light mode.
Press 10th time: Turn off the light.
Press and hold for 3S to turn off the lights

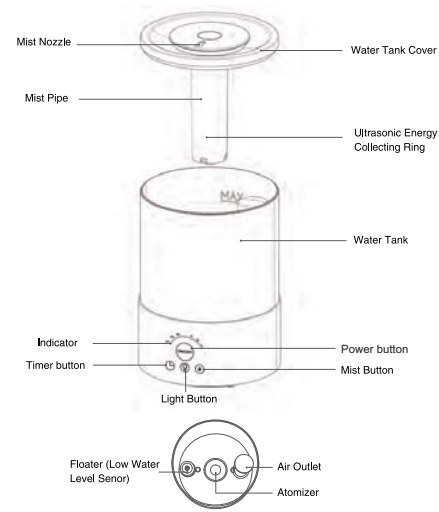
Note: Under any single-color light mode, press and hold the light button for 3 seconds to turn off the light.

Timer button:

Press 1st time: unit work 2H, then stop after 2H, "2H" indicator light stays on.
Press 2nd time: unit work 4H, then stop after 4H, "4H" indicator light stays on.
Press 3rd time: unit work 8H, then stop after 8H, "8H" indicator light stays on.
Press 4th time: Turn off the Timer and the unit will keep working until there is water shortage and it will stop automatically.

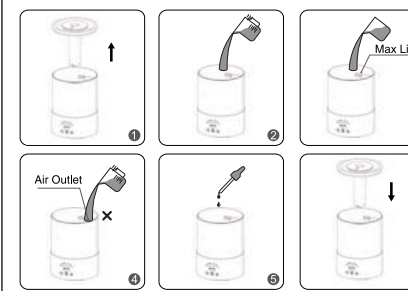
6

NAMES OF PARTS



1

OPERATION GUIDE



- Keeping the machine flat, remove the water tank cover.
- Fill the tank with water.
- Do not add water to exceed the Max line.
- Do not let water enter the air outlet which will cause the humidifier to malfunction.
- You can add essential oils into the water tank and enjoy the aromatherapy.
- Put the water tank cover on, connect the power supply, and turn on the product.

2

HOW TO TURN ON WIFI FUNCTION:

After connecting the power supply (do not turn on the power button), press and hold the timer button for 5 seconds. A beep will appear accompanied by a light blue light flashing, indicating that it has entered the connection state. After the connection is successful, the light will stop flashing. (Note: If no connection is made, the light blue light will continue to flash for 3 minutes and then turn off automatically. If you need to connect again, please repeat the above operations)

WiFi Connection Guide

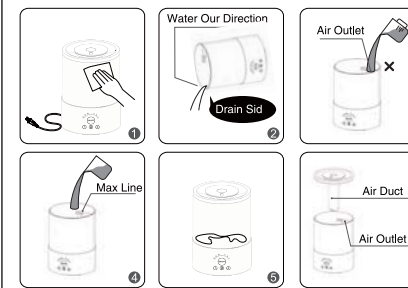
- WiFi router supporting the 2.4GHz and 802.11 b/g/n bands. 5GHz is not supported.
- Download the Tuya app from the App Store (iOS devices) or Google Play (Android devices).
- Entering the register, then turn on mobile wifi and Bluetooth.
- Log into the account. Choose "add devices", Find our product and add it;
- Enter a valid WiFi network in the space where the humidifier is located and enter your WiFi account and password to connect to the humidifier.
- After a humidifier is added, change the name of the humidifier to an easily recognizable name.
- Enter the APP operation interface for normal operation;

DOWNLOAD THE TUYA APP



7

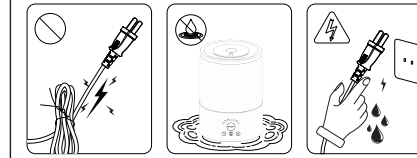
OPERATIONS GUIDE



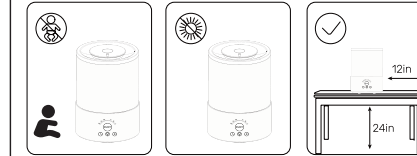
- Please clean the water tank, base and atomizer regularly, and turn off the power before cleaning.
- Please change the water in the tank frequently and pour the water in the right direction. You will accidentally damage the humidifier if you empty the water contents in the wrong direction (see diagram): the button side must be facing up towards you as you pour the water contents out.
- During cleaning, please be careful not to get water into the air outlet, which might cause short circuit and machine damage.
- Do not add water exceed the Max line.
- When water runs out, our humidifier will auto turn off. At this moment, there is still a little water left in the tank (not totally dried), which is to prevent dryburn. It is a normal phenomenon and please feel assured to it.
- Please let the air duct towards the air outlet for better misting experience.
- As this humidifier is top-fill design, the water level is relatively low when you using it, which may affect the mist output.

8

BEFORE USING THE HUMIDIFIER



- DO NOT use the humidifier if the cord has been damaged. Please check the cord for any signs of damage.
- DO NOT place this humidifier in wet environments.
- DO NOT plug the cord with wet hands.



- Please always keep the humidifier out of reach of patients, children & pet.
- Please always place the unit on a smooth, flat, fire-free, non-slip, waterproof and level surface and keep it away from direct sunlight.
- Always place the unit 24 inches(60 cm) above the floor, 12 inches(30 cm) away from the wall, other appliances or wooden furniture.

3

PLEASE ATTENTION

Warning: Changes or modifications to this unit not expressly approved by the party responsible for compliance could void the user's authority to operate the equipment.

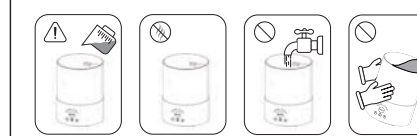
This device complies with Part 15 of the FCC Rules. Operation is subject to the following two conditions:

- (1) this device may not cause harmful interference.
- (2) this device must accept any interference received, including interference that may cause undesired operation.

Note: This equipment has been tested and found to comply with the limits for a Class B digital device, pursuant to part 15 of the FCC Rules. These limits are designed to provide reasonable protection against harmful interference in a residential installation. This equipment generates, uses and can radiate radio frequency energy and, if not installed and used in accordance with the instructions, may cause harmful interference to radio communications. However, there is no guarantee that interference will not occur in a particular installation. If this equipment does cause harmful interference to radio or television reception, which can be determined by turning the equipment off and on, the user is encouraged to try to correct the interference by one or more of the following measures:
-- Reorient or relocate the receiving antenna.
-- Increase the separation between the equipment and receiver.
-- Connect the equipment into an outlet on a circuit different from that to which the receiver is connected.
-- Consult the dealer or an experienced radio/TV technician for help.

To maintain compliance with FCC's RF exposure guidelines, the distance must be at least 20cm between the radiator and your body, and fully supported by the operating and installation configurations of the transmitter and its antenna(s).

4



- If tap water is too hard, it is recommended to use filtered or distilled water to avoid white dust.
- DO NOT add water with temperature exceeds 50 degree Celsius.
- DO NOT add water into the air outlet or empty water from the air outlet.
- DO NOT tilt the humidifier while the water tank is filled with water to avoid leakage and water into the air outlet.

SPECIFICATIONS

Model	HMCW-25US
Input voltage	100-240V
Rated Power	25W
Water Tank Capacity	2.5L
Working Time	
Atomization Quantity	
Timer Setting	2h/4h/8h

9