

UTBook



| | | | | |
|--|--|--|---|--|
|  QUAD CORE |  64GB STORAGE |  TOUCH SCREEN |  CAMERA |  WI-FI |
|--|--|--|---|--|

CONTENTS

| | |
|---|---|
| Important Safety Instructions and Precautions | 1 |
| Appearance and Buttons | 2 |
| Accessories | 2 |
| Turning On and Off | 3 |
| Battery Charging | 3 |
| Run Time | 3 |
| 5 Point Touch Screen | 3 |
| Sleep Mode | 3 |
| Lock/ Unlock | 4 |
| Home Screen Icons | 5 |
| View All Apps | 5 |
| Apps Icons | 5 |
| Notification Menu Bar | 6 |
| Shortcut Menu Bar | 6 |
| Settings – Wi-Fi | 7 |
| Connecting to PC / Mac via USB | 7 |
| Why Create a Google Account | 8 |
| Google Play Store | 8 |
| Specifications | 8 |
| FAQ | 9 |

IMPORTANT SAFETY INSTRUCTIONS AND PRECAUTIONS

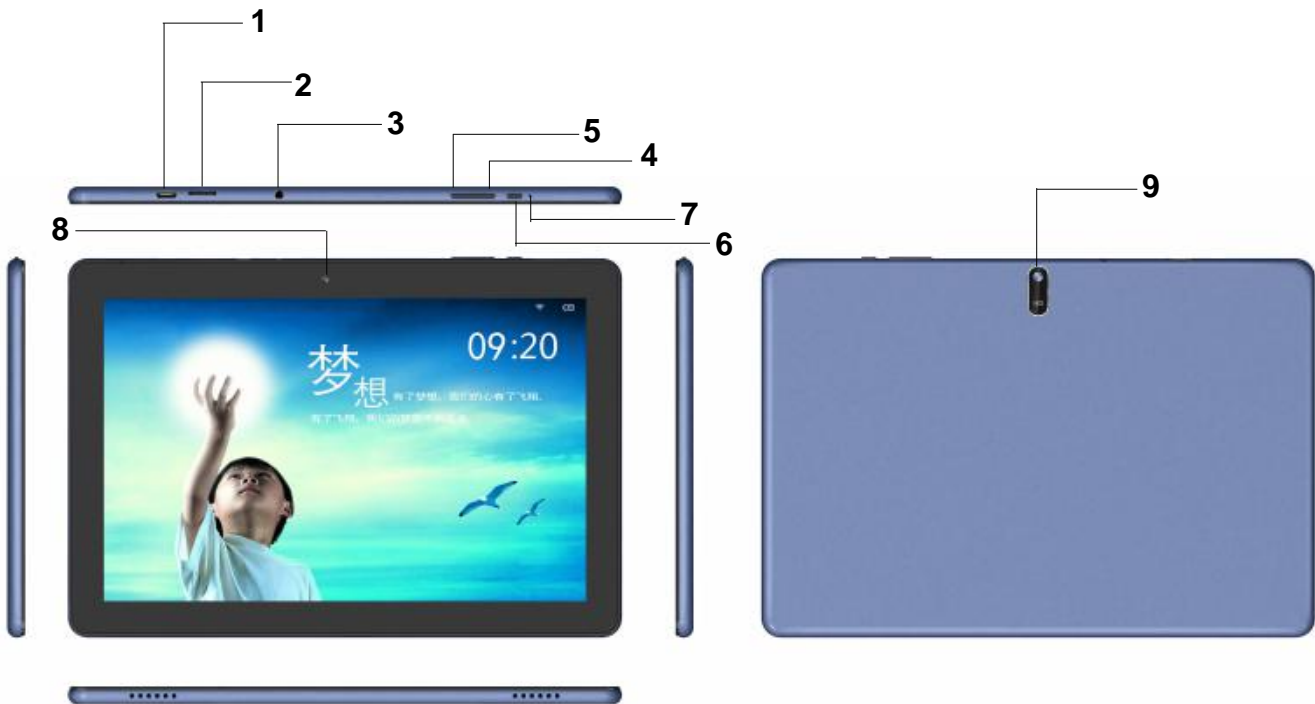
- Read all instructions carefully before use.
- Retain this manual for future reference.
- Use this product only in the manner described.
- Only use a water-dampened soft-cloth to clean the surface of this product.

The following will damage this product: water or moisture ingress, exposure to prolonged extreme heat or cold; excessive humidity, dust or sandy.

It is recommended to thoroughly charge the device for the first time. Subsequent charges can be as needed. During charging, or extended use, the product may become warm.

- There are no user serviceable parts in this product.
- Un-authorized attempts to dismantle or repair this product will void product warranty and may result in dangerous electric shock.
- Remove data cable by pulling it from the plug, not from the cord.

MID-1085 : APPEARANCE AND BUTTONS



| Number | Description |
|--------|---|
| 1 | Micro USB interface (Data Transfer, Charging, USB Storage flash drive). |
| 2 | (Internal) Micro SD Card slot (Supports cards up to 64GB) |
| 3 | Stereo Earphone Socket (3.5mm Jack) |
| 4 | Volume Up |
| 5 | Volume Down |
| 6 | On / OFF button (*Press and hold to turn ON and OFF) |
| 7 | Reset button |
| 8 | Front mount camera |
| 9 | Rear camera |

ACCESSORIES

1 x MID Tablet, 1 x Micro USB/DATA cable, 1 x User Guide

TURNING ON AND OFF

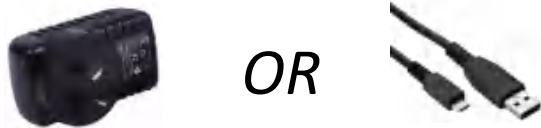
To turn ON, PRESS and HOLD the POWER button until the screen turns ON.

To turn OFF, PRESS and HOLD the POWER button until the power screen appears. Then select Power Off.

Note: At any time you can press the POWER BUTTON to enter Snooze mode or to wake from Snooze mode.

BATTERY CHARGING

Connect your tablet to any USB charging socket (Wall adapter or PC), using the supplied USB/DATA cable.



You will be alerted when the battery charge falls below 15%. If the battery is completely depleted your tablet will automatically turn off.

Note: If the battery has been completely exhausted, it may take a few minutes to switch on once charging has begun. Your tablet can be used during charging however this may increase the time needed to fully charge the battery.

RUN TIME

Run time of portable devices including your tablet can be extended by reducing the screen brightness, turning off Bluetooth function, turning off the Location function, turning off WiFi when not in use, turning off Apps that are not required and manually turning the screen off using the power button when not in use.

5 POINT TOUCH-SCREEN

Your tablet has 5 different touch screen behaviours.

- | | |
|------------------|---|
| 1- TAP | Tap once to select or start a function, option or application |
| 2- TAP and HOLD | Tap and hold to select or start a function |
| 3- DRAG and DROP | Tap then drag an item and drop it to a location |
| 4- DOUBLE TAP | Double Tap an item twice to select or start a function |
| 5- SLIDE/SWIPE | Tap then slide an item up, down, left or right |

SLEEP MODE

During prolonged inactive use where no buttons have been pressed, the screen will turn off automatically to conserve power. Press the POWER button to wake your tablet.

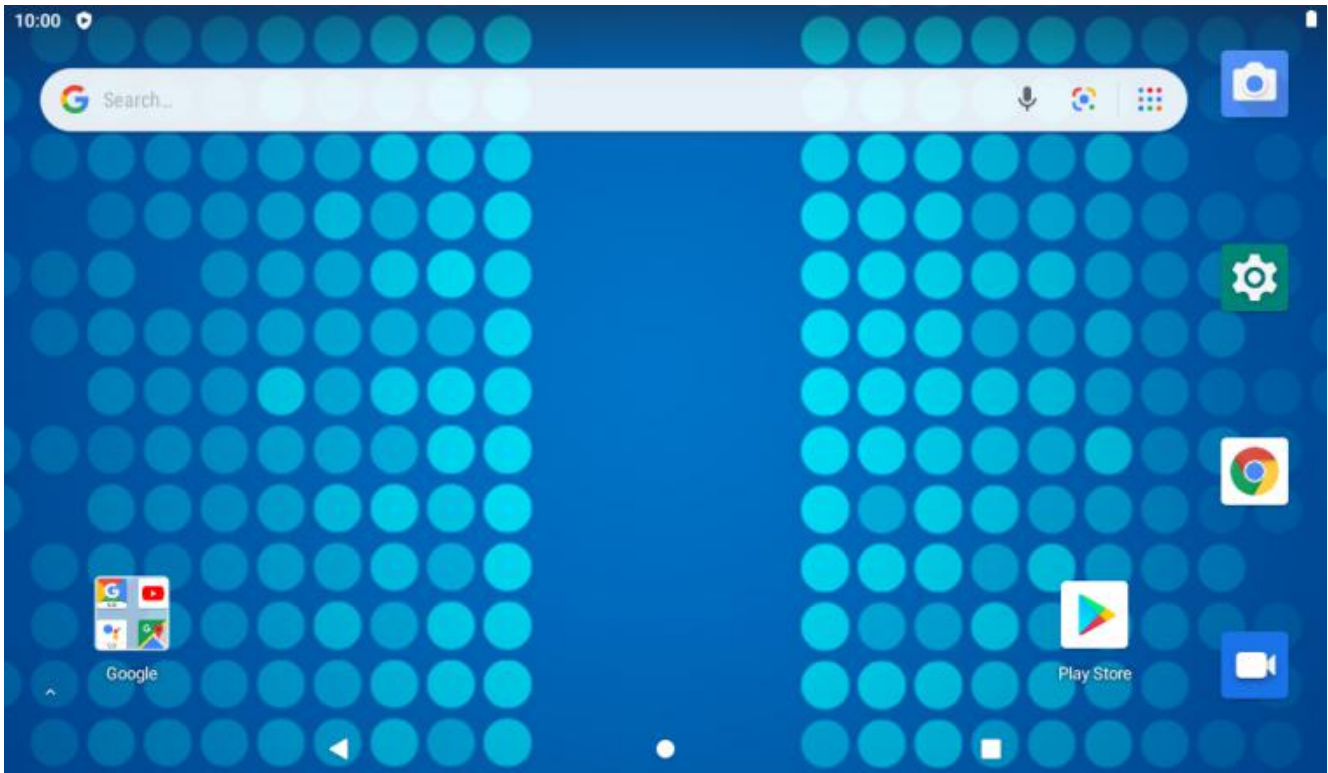
Note: This can be adjusted in Display option under Settings.

LOCK / UNLOCK

When your tablet is in sleep mode, press the POWER button to show the unlock screen. Swipe up to unlock

Note: Some of the following images may be different from the actual product supplied.

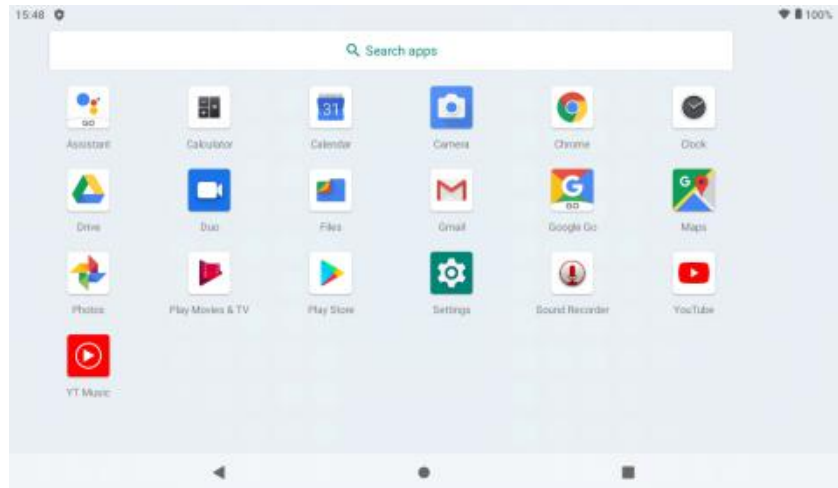
HOME SCREEN ICONS



| Icon | Function |
|------|---|
| ^ | View all apps |
| ◀ | Back |
| ● | Home |
| ■ | Open a list of recently used applications |

VIEW ALL APPS

On the Home page, swipe up to view all the installed apps on your tablet



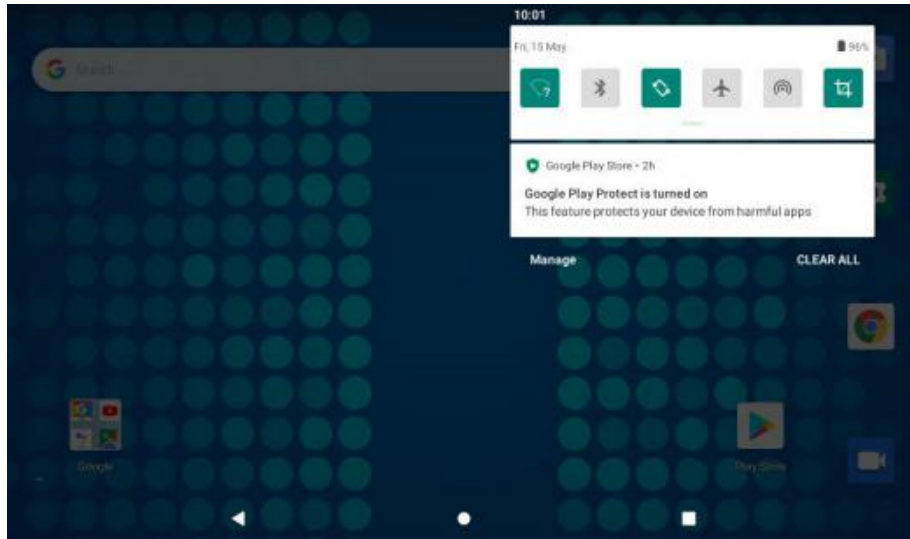
APPS ICONS

Note: Some of the following images may be different from the actual product supplied.

| | | | |
|--|---|--|---|
| | Google Assistant | | Photos , a smart, light and fast photo and video gallery built by Google |
| | Calculator provides simple and advanced mathematical functions | | Gmail™ is an easy-to-use email app |
| | Google Calendar , to save time and make the most of every day. | | Google Go is a lighter, faster way to search, with search results optimised |
| | Camera , to take fantastic pictures and videos | | Google Maps Go is the lightweight Progressive Web App |
| | Google Chrome™ is a fast, easy to use, and secure web browser | | Google Play Movies & TV allows you to watch movies and TV shows purchased or rented on Google Play |
| | Clock combines all of the functionality you need into one simple, beautiful package. | | Play Store , It serves as the official app store for the Android operating system |
| | Google Drive is a safe place for all of your files that puts them within reach from any smartphone, tablet or computer | | Settings makes a quick access to all your device settings |
| | Google Duo is the highest quality video calling app | | Sound Recorder is the best recorder for sound recording with high quality |
| | Files by Google is a file management app | | YouTube™ , to see what the world is watching |
| | | | YT Music is a new music app |

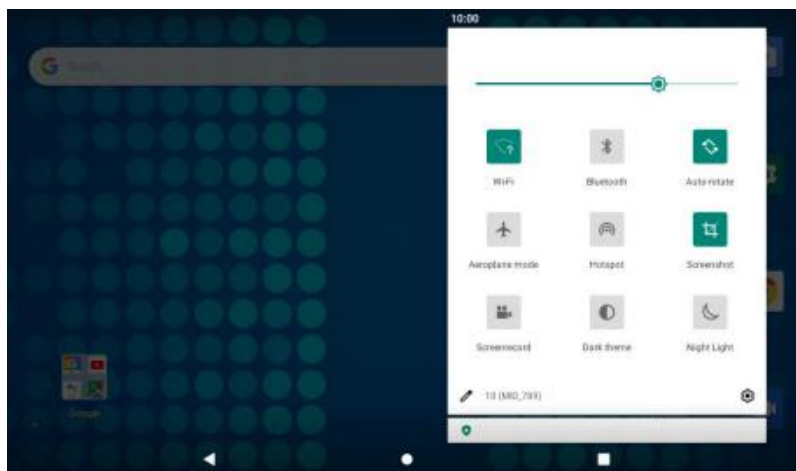
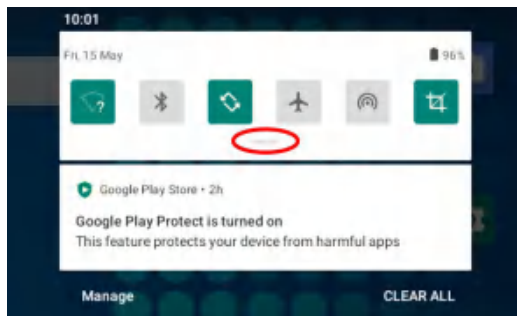
NOTIFICATION MENU BAR

Swipe down over the Notification Menu Bar (top of the screen) to bring up any notifications you may have.



SHORTCUT MENU BAR

Press the drop down bar (in red circle) in the NOTIFICATIONS MENU bar to display your shortcuts menu such as: Battery Saver, Wi-Fi, Location, Bluetooth, Screenshot, Aeroplane mode, etc.

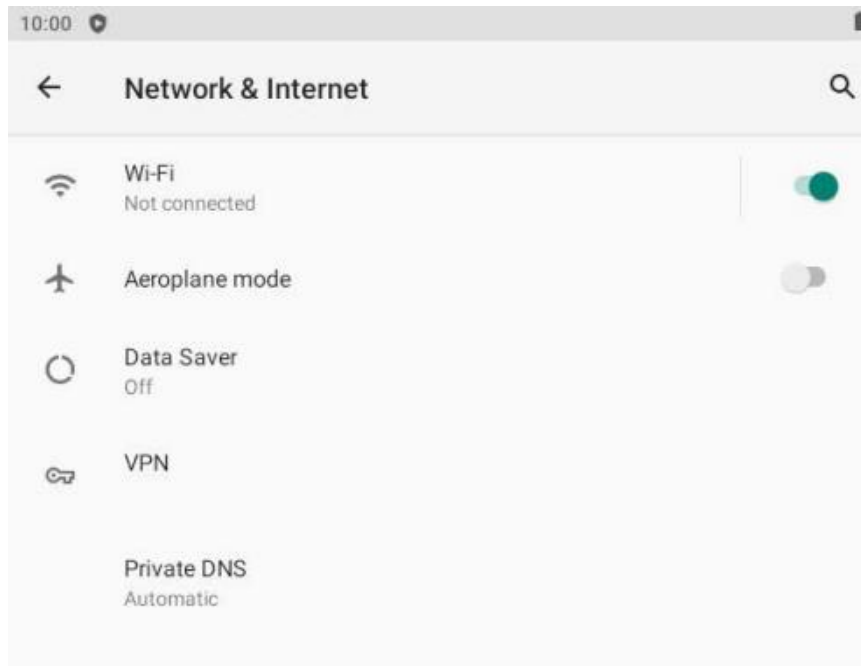


SETTINGS

Wi-Fi

Note: a WiFi connection is required if connecting to the internet (for email, Play Store App or web browsing)

Follow the steps below to connect to Wi-Fi:
Settings > Network & Internet > Wi-Fi



Tap the desired NETWORK name. If this NETWORK connects successfully, “Connected” will appear. If the NETWORK is encrypted, enter the password then tap “Connect”.

Your Tablet will indicate when the NETWORK connection is ready for use when the WiFi icon appears on the top right notification bar.



CONNECTING TO A PC / MAC VIA USB

Connect the USB cable to your Tablet and PC/MAC, making sure you are using the correct MICRO USB cable supplied.

WHY CREATE A GOOGLE ACCOUNT

Creating a Google account allows you to talk, chat, share, schedule, store, organize, collaborate, discover, and create online. A Google account also provides user level access to Gmail and YouTube which are all backed up online and accessible online via the cloud.

Google Play Store

Open the PLAY STORE APP and set up your account. If you have an existing account select EXISTING, otherwise choose NEW to create a new account and follow the set-up steps.



SPECIFICATIONS

| | |
|--------------------------|--|
| Operation System: | Android™ 10.0 |
| Size | 250.1 x 171 x 7.6 mm |
| CPU processor type: | Quad Core |
| Memory: | 64 GB |
| RAM: | 4 GB |
| TF card: | 128M-64G |
| Display screen: | 10.1" Capacitive multi-touch IPS TFT |
| Resolution: | 1280 x 800 |
| Battery and capacity: | Rechargeable Li-ion Poly 5000MAh |
| Camera Resolution: | 2.0MP (Front mount), 13.0MP (Rear Mount) |
| Screen auto orientation: | G-sensor 3D |
| Voice Recording | Built-in microphone |
| Supported file types: | Video format: avi, mov, mp4, 3gp, flv Audio format: mp3, flac, aac, wav, m4a <i>(To play other formats, you will need to download the App that supports the format you intend to play)</i> |

Google, Android, Google Play, YouTube and other marks are trademarks of Google LLC.

The Android robot is reproduced or modified from work created and shared by Google and used according to terms described in the Creative Commons 3.0 Attribution License.

FAQ

| | |
|--|--|
| The HDMI output to my TV doesn't work | Please make sure the HDMI output has been turned on under the Settings Menu (Settings > Display > HDMI > ON) |
| I can't turn my tablet ON? | <ol style="list-style-type: none"> 1.Ensure your tablet is charged 2. Connect the power adaptor, and then check again after sufficient charge time 3. Reset the device using the reset button |
| I can't hear anything through my headset, or the sound quality is very bad | <ol style="list-style-type: none"> 1. Ensure speakers are not obstructed eg. Laying flat on a table 1.Please ensure volume is turned up 2. Check the music file on another device to make sure it is not damaged. 3. Try using another pair of headphones |
| I can't copy files or play music | <ol style="list-style-type: none"> 1.Please check the connection to you computer 2.Ensure there is enough spare memory 3.Check the USB cable is not damaged using another device 4.Check the USB connection is inserted correctly |
| My tablet displays a network or service error message | <ol style="list-style-type: none"> 1. Check the strength of the WiFi signal 2. Check that the WiFi service is available and operating correctly 3. When using apps like Face Book and Play Store App (with a lot of content) <u>for the first time</u>, a few extra minutes will be required to load all the content. |
| My touch screen is slow and not working correctly | <ol style="list-style-type: none"> 1. Make sure the protective film has been removed from the screen 2. Ensure that your fingers are dry and clean. 3. Restart your tablet 4. Ensure the touch screen is not scratched or damaged |
| My tablet is frozen or a severe error has occurred | <ol style="list-style-type: none"> 1. Try closing Apps or resetting 2. Restore or reset the tablet to factory default settings via the settings menu. 3. Reset the device using the reset button |
| My tablet becomes hot when is use or while charging | <ol style="list-style-type: none"> 1. Some applications can consume more power than others causing the tablet to become warm while in use or if used for extended amounts of time. This is normal and won't affect the life or performance of your tablet. |
| An error occurs when I open my music files | <ol style="list-style-type: none"> 1. Remove some files to make more storage space 2. Make sure the music files aren't protected by digital rights management (DRM). If the files have DRM protection, make sure that you have the license or key. 3. Make sure that file type is compatible. |
| The available memory on my tablet is less than 8GB. Why is that so? | Some of this space is required to pre-load Apps and other Software. Space is required for the OS (Operating System). |
| My MID tablets internal memory is almost full; can I install or move the Apps to external SD card? | Latest Android OS will only allow apps to be installed on internal memory. To free up the internal space: 1) Uninstall some un-used apps. 2) Move photos, music or video files to SD card. |
| My tablet screen has cracked; will it be covered by warranty? | No, physical damage is not covered by warranty. |
| I can't find the Micro SD card socket | Please remove the top housing section by accessing the SD Card Release Panel Access Point. Please refer to the Appearance and buttons section of this manual. |

Please note: As continuous improvements are made to this product, slight operational differences may occur. For the most up-to-date user manual, please visit our web site.

This device complies with Part 15 of the FCC Rules. Operation is subject to the following two conditions: (1) this device may not cause harmful interference, and (2) this device must accept any interference received, including interference that may cause undesired operation

NOTE: This equipment has been tested and found to comply with the limits for a Class B digital device, pursuant to Part 15 of the FCC Rules. These limits are designed to provide reasonable protection against harmful interference in a residential installation. This equipment generates, uses and can radiate radio frequency energy and, if not installed and used in accordance with the instructions, may cause harmful interference to radio communications. However, there is no guarantee that interference will not occur in a particular installation.

If this equipment does cause harmful interference to radio or television reception, which can be determined by turning the equipment off and on, the user is encouraged to try to correct the interference by one or more of the following measures:

- Reorient or relocate the receiving antenna.
- Increase the separation between the equipment and receiver.
- Connect the equipment into an outlet on a circuit different from that to which the receiver is connected.
- Consult the dealer or an experienced radio/TV technician for help.

Warning: changes or modifications not expressly approved by the party responsible for compliance could void the user's authority to operate the equipment