



# TEST REPORT

## 47 CFR Part 15, Subpart C

Report Reference No..... : CTL2409121011-WF

Compiled by  
( position+printed name+signature)

Happy Guo  
(File administrator)

Supervised by  
( position+printed name+signature)

Jack Wang  
(Test Engineer)

Approved by  
( position+printed name+signature)

Ivan Xie  
(Manager)



Test Firm..... : Shenzhen CTL Testing Technology Co., Ltd.

Address..... : Floor 1-A, Baisha Technology Park, No.3011, Shahexi Road, Nanshan District, Shenzhen, China 518055

Applicant's name ..... : Yuwei Technology (Dongguan) Co., Ltd.

Address..... : Room 301, No.15 Longjing Road, Guanjingtou, Fenggang Town, Dongguan City, Guangdong Province, China

### Test specification:

Standard ..... : 47 CFR Part 15, Subpart C

Master TRF..... : Dated 2011-01

Test item description ..... : Solar Power Bank

FCC ID..... : 2AZK8-T39W

Trade Mark..... : N/A

Model/Type reference ..... : T39W

Antenna type..... : loop coil Antenna

Date of receipt of test item ..... : Sept. 14, 2024

Date of Test Date..... : Sept. 14, 2024–Sept. 29, 2024

Data of Issue..... : Sept. 30, 2024

Result..... : Pass

### Shenzhen CTL Testing Technology Co., Ltd. All rights reserved.

This publication may be reproduced in whole or in part for non-commercial purposes as long as the Shenzhen CTL Testing Technology Co., Ltd. is acknowledged as copyright owner and source of the material. Shenzhen CTL Testing Technology Co., Ltd. takes no responsibility for and will not assume liability for damages resulting from the reader's interpretation of the reproduced material due to its placement and context.

**TEST REPORT**

<b>Test Report No. :</b>	<b>CTL2409121011-WF</b>	Sept. 30, 2024
		Date of issue

Equipment under Test : Solar Power Bank

Type / Model(s) : T39W

**Applicant** : **Yuwei Technology (Dongguan) Co., Ltd.**

Address : Room 301, No.15 Longjing Road, Guanjingtou, Fenggang Town, Dongguan City, Guangdong Province, China

**Manufacturer** : **Yuwei Technology (Dongguan) Co., Ltd.**

Address : Room 301, No.15 Longjing Road, Guanjingtou, Fenggang Town, Dongguan City, Guangdong Province, China

<b>Test result</b>	<b>Pass *</b>
--------------------	---------------

The test results presented in this report relate only to the object tested.  
This report shall not be reproduced, except in full, without the written approval of the issuing testing laboratory.



## Contents

<b>1.</b>	<b><u>TEST STANDARDS .....</u></b>	<b><u>5</u></b>
<b>2.</b>	<b><u>SUMMARY .....</u></b>	<b><u>6</u></b>
2.1.	General Remarks	6
2.2.	Equipment Under Test	6
2.3.	Short description of the Equipment under Test (EUT)	6
2.4.	EUT operation mode	6
2.5.	Related Submittal(s) / Grant (s)	6
2.6.	Modifications	6
<b>3.</b>	<b><u>TEST ENVIRONMENT .....</u></b>	<b><u>7</u></b>
3.1.	Address of the test laboratory	7
3.2.	Test Facility	7
3.3.	Environmental conditions	7
3.4.	Statement of the measurement uncertainty	8
3.5.	Equipments Used during the Test	8
<b>4.</b>	<b><u>TEST CONDITIONS AND RESULTS .....</u></b>	<b><u>9</u></b>
4.1.	AC Power Conducted Emission	9
4.2.	Radiated Emission	11
4.3.	20dB Bandwidth/99% Bandwidth	17
<b>5.</b>	<b><u>TEST SETUP PHOTOS OF THE EUT .....</u></b>	<b><u>18</u></b>
<b>6.</b>	<b><u>EXTERNAL AND INTERNAL PHOTOS OF THE EUT .....</u></b>	<b><u>21</u></b>

## 1. TEST STANDARDS

The tests were performed according to following standards:

[47 CFR Part 15, Subpart C 15.207,15.209, 15.215\(c\)](#)

[ANSI C63.10-2013](#)

## 2. SUMMARY

### 2.1. General Remarks

Date of receipt of test sample	:	Sept. 14, 2024
Testing commenced on	:	Sept. 14, 2024
Testing concluded on	:	Sept. 29, 2024

### 2.2. Equipment Under Test

#### Power supply system utilised

Power supply voltage	:	Input: 5V==3A Output : 5V==3A Battery Capacity: 3.7V 27000mAh/99Wh Wireless Charging: 5W(Max)
----------------------	---	--

### 2.3. Short description of the Equipment under Test (EUT)

A Power Bank work frequency range 110KHz-205KHz.  
Modulation type: CW (Continuous Wave)  
Antenna type: Coil Antenna  
For more details, refer to the user's manual of the EUT.  
Serial number: Prototype

### 2.4. EUT operation mode

The EUT has been tested under typical operating condition. The Applicant provides communication tools software to control the EUT for staying in continuous transmitting mode for testing.

Test Mode 1	AC Charging+Wireless output(5W MAX) full load
Test Mode 2	AC Charging+Wireless output(5W MAX) half load
Test Mode 3	AC Charging+Wireless output(5W MAX) no load
Test Mode 4	Wireless output(5W MAX) full load
Test Mode 5	Wireless output(5W MAX) half load
Test Mode 6	Wireless output(5W MAX) no load
Note: All modes have been tested, and the report only records the worst test modes, namely Test Mode 1 and Test Mode 4.	

### 2.5. Related Submittal(s) / Grant (s)

This submittal(s) (test report) is intended for **FCC ID: 2AZK8-T39W** filing to comply with FCC Part 15, Subpart C Rules.

### 2.6. Modifications

No modifications were implemented to meet testing criteria.

### **3. TEST ENVIRONMENT**

#### **3.1. Address of the test laboratory**

Shenzhen CTL Testing Technology Co., Ltd.  
Floor 1-A, Baisha Technology Park, No. 3011, Shahexi Road, Nanshan, Shenzhen 518055 China

There is one 3m semi-anechoic chamber and two line conducted labs for final test. The Test Sites meet the requirements in documents ANSI C63.4 and CISPR 32/EN 55032 requirements.

#### **3.2. Test Facility**

The test facility is recognized, certified, or accredited by the following organizations:

##### **CNAS-Lab Code: L7497**

Shenzhen CTL Testing Technology Co., Ltd. has been assessed and proved to be in compliance with CNAS-CL01 Accreditation Criteria for Testing and Calibration Laboratories (identical to ISO/IEC 17025: 2017 General Requirements) for the Competence of Testing and Calibration Laboratories.

##### **A2LA-Lab Cert. No. 4343.01**

Shenzhen CTL Testing Technology Co., Ltd, EMC Laboratory has been accredited by A2LA for technical competence in the field of electrical testing, and proved to be in compliance with ISO/IEC 17025: 2017 General Requirements for the Competence of Testing and Calibration Laboratories and any additional program requirements in the identified field of testing.

##### **IC Registration No.: 9518B**

##### **CAB identifier: CN0041**

The 3m alternate test site of Shenzhen CTL Testing Technology Co., Ltd. EMC Laboratory has been registered by Innovation, Science and Economic Development Canada to test to Canadian radio equipment requirements with Registration No.: 9518B.

##### **FCC-Registration No.: 399832**

##### **Designation No.: CN1216**

Shenzhen CTL Testing Technology Co., Ltd. EMC Laboratory has been registered and fully described in a report filed with the (FCC) Federal Communications Commission. The acceptance letter from the FCC is maintained in our files. Registration 399832.

#### **3.3. Environmental conditions**

During the measurement the environmental conditions were within the listed ranges:

Temperature:	<u>15-35 ° C</u>
Humidity:	<u>30-60 %</u>
Atmospheric pressure:	<u>950-1050mbar</u>



### 3.4. Statement of the measurement uncertainty

The data and results referenced in this document are true and accurate. The reader is cautioned that there may be errors within the calibration limits of the equipment and facilities. The measurement uncertainty was calculated for all measurements listed in this test report acc. to CISPR 16 - 4 „Specification for radio disturbance and immunity measuring apparatus and methods – Part 4: Uncertainty in EMC Measurements“ and is documented in the Shenzhen CTL Testing Technology Co., Ltd. quality system acc. to DIN EN ISO/IEC 17025. Furthermore, component and process variability of devices similar to that tested may result in additional deviation. The manufacturer has the sole responsibility of continued compliance of the device.

Hereafter the best measurement capability for CTL laboratory is reported:

Test	Range	Measurement Uncertainty	Notes
Radiated Emission	9KHz~30MH	4.10dB	(1)
Radiated Emission	30~1000MHz	4.10dB	(1)
Radiated Emission	Above 1GHz	4.32dB	(1)
Conducted Disturbance	0.15~30MHz	3.20dB	(1)

(1) This uncertainty represents an expanded uncertainty expressed at approximately the 95% confidence level using a coverage factor of  $k=1.96$ .

### 3.5. Equipments Used during the Test

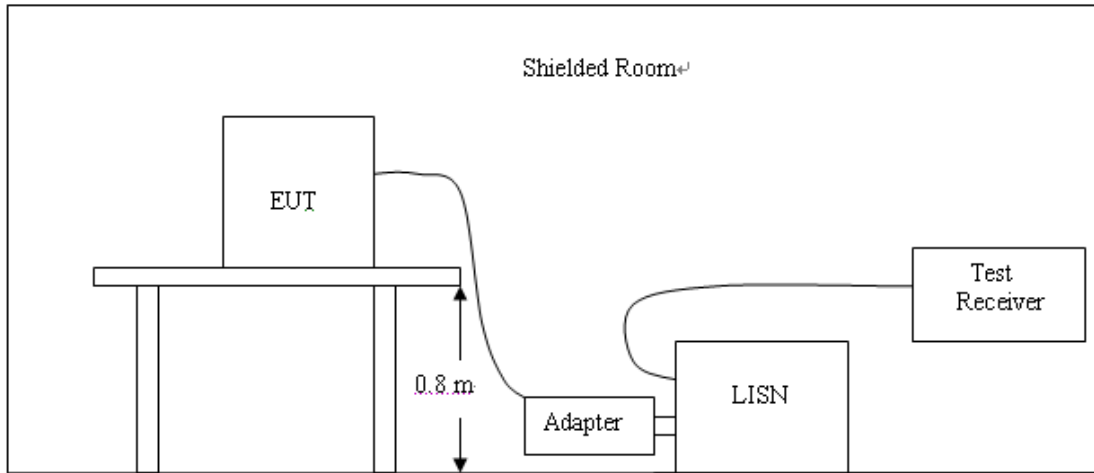
Test Equipment	Manufacturer	Model No.	Serial No.	Calibration Date	Calibration Due Date
LISN	R&S	ESH2-Z5	860014/010	2024/04/30	2025/04/29
Double cone logarithmic antenna	Schwarzbeck	VULB 9168	824	2023/02/13	2026/02/12
EMI Test Receiver	R&S	ESCI	1166.5950.03	2024/04/30	2025/04/29
Spectrum Analyzer	Keysight	N9020A	MY53420874	2024/05/01	2025/04/30
Active Loop Antenna	Da Ze	ZN30900A	/	2024/04/30	2025/04/29
Spectrum Analyzer	RS	FSP	1164.4391.38	2024/05/03	2025/05/02



## 4. TEST CONDITIONS AND RESULTS

### 4.1. AC Power Conducted Emission

#### TEST CONFIGURATION



#### TEST PROCEDURE

- 1 The equipment was set up as per the test configuration to simulate typical actual usage per the user's manual. The EUT is a tabletop system, a wooden table with a height of 0.8 meters is used and is placed on the ground plane as per ANSI C63.10-2013.
- 2 Support equipment, if needed, was placed as per ANSI C63.10-2013
- 3 All I/O cables were positioned to simulate typical actual usage as per ANSI C63.10-2013
- 4 The EUT received DC5V power from the adapter, the adapter received AC120V/60Hz power through a Line Impedance Stabilization Network (LISN) which supplied power source and was grounded to the ground plane.
- 5 All support equipments received AC power from a second LISN, if any.
- 6 The EUT test program was started. Emissions were measured on each current carrying line of the EUT using a spectrum Analyzer / Receiver connected to the LISN powering the EUT. The LISN has two monitoring points: Line 1 (Hot Side) and Line 2 (Neutral Side). Two scans were taken: one with Line 1 connected to Analyzer / Receiver and Line 2 connected to a 50 ohm load; the second scan had Line 1 connected to a 50 ohm load and Line 2 connected to the Analyzer / Receiver.
- 7 Analyzer / Receiver scanned from 150 KHz to 30MHz for emissions in each of the test modes.
- 8 During the above scans, the emissions were maximized by cable manipulation.  
Conducted emissions were investigated over the frequency range from 0.15MHz to 30MHz using a receiver bandwidth of 9kHz.

#### AC Power Conducted Emission Limit

For intentional device, according to § 15.207(a) AC Power Conducted Emission Limits is as following :

Frequency (MHz)	Maximum RF Line Voltage (dB $\mu$ V)			
	CLASS A		CLASS B	
	Q.P.	Ave.	Q.P.	Ave.
0.15 - 0.50	79	66	66-56*	56-46*
0.50 - 5.00	73	60	56	46
5.00 - 30.0	73	60	60	50

\* Decreasing linearly with the logarithm of the frequency

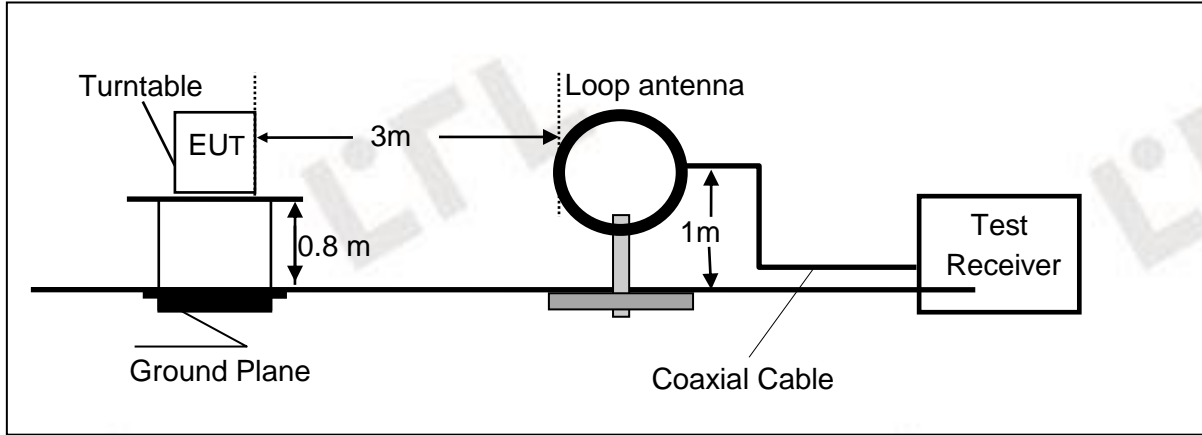
TEST RESULTS

Test Mode 1	L																																																								
<p><b>SCAN TABLE: "Voltage (9K-30M) FIN"</b> Short Description: 150K-30M Voltage</p>																																																									
<p><b>MEASUREMENT RESULT: "CTL240912206_fin"</b></p> <p>9/25/2024 2:13PM</p> <table border="1" style="width:100%; border-collapse: collapse;"> <thead> <tr> <th>Frequency MHz</th> <th>Level dBuV</th> <th>Transd dB</th> <th>Limit dBuV</th> <th>Margin dB</th> <th>Detector</th> <th>Line</th> <th>PE</th> </tr> </thead> <tbody> <tr><td>0.154500</td><td>50.30</td><td>10.0</td><td>66</td><td>15.5</td><td>QP</td><td>L1</td><td>GND</td></tr> <tr><td>0.226500</td><td>40.10</td><td>10.0</td><td>63</td><td>22.5</td><td>QP</td><td>L1</td><td>GND</td></tr> <tr><td>0.379500</td><td>38.50</td><td>10.0</td><td>58</td><td>19.8</td><td>QP</td><td>L1</td><td>GND</td></tr> <tr><td>0.465000</td><td>37.40</td><td>10.0</td><td>57</td><td>19.2</td><td>QP</td><td>L1</td><td>GND</td></tr> <tr><td>0.690000</td><td>33.60</td><td>10.0</td><td>56</td><td>22.4</td><td>QP</td><td>L1</td><td>GND</td></tr> <tr><td>2.350500</td><td>27.40</td><td>10.1</td><td>56</td><td>28.6</td><td>QP</td><td>L1</td><td>GND</td></tr> </tbody> </table>		Frequency MHz	Level dBuV	Transd dB	Limit dBuV	Margin dB	Detector	Line	PE	0.154500	50.30	10.0	66	15.5	QP	L1	GND	0.226500	40.10	10.0	63	22.5	QP	L1	GND	0.379500	38.50	10.0	58	19.8	QP	L1	GND	0.465000	37.40	10.0	57	19.2	QP	L1	GND	0.690000	33.60	10.0	56	22.4	QP	L1	GND	2.350500	27.40	10.1	56	28.6	QP	L1	GND
Frequency MHz	Level dBuV	Transd dB	Limit dBuV	Margin dB	Detector	Line	PE																																																		
0.154500	50.30	10.0	66	15.5	QP	L1	GND																																																		
0.226500	40.10	10.0	63	22.5	QP	L1	GND																																																		
0.379500	38.50	10.0	58	19.8	QP	L1	GND																																																		
0.465000	37.40	10.0	57	19.2	QP	L1	GND																																																		
0.690000	33.60	10.0	56	22.4	QP	L1	GND																																																		
2.350500	27.40	10.1	56	28.6	QP	L1	GND																																																		
<p><b>MEASUREMENT RESULT: "CTL240912206_fin2"</b></p> <p>9/25/2024 2:13PM</p> <table border="1" style="width:100%; border-collapse: collapse;"> <thead> <tr> <th>Frequency MHz</th> <th>Level dBuV</th> <th>Transd dB</th> <th>Limit dBuV</th> <th>Margin dB</th> <th>Detector</th> <th>Line</th> <th>PE</th> </tr> </thead> <tbody> <tr><td>0.154500</td><td>35.40</td><td>10.0</td><td>56</td><td>20.4</td><td>AV</td><td>L1</td><td>GND</td></tr> <tr><td>1.315500</td><td>23.20</td><td>10.1</td><td>46</td><td>22.8</td><td>AV</td><td>L1</td><td>GND</td></tr> <tr><td>1.545000</td><td>23.10</td><td>10.1</td><td>46</td><td>22.9</td><td>AV</td><td>L1</td><td>GND</td></tr> <tr><td>1.779000</td><td>24.10</td><td>10.1</td><td>46</td><td>21.9</td><td>AV</td><td>L1</td><td>GND</td></tr> <tr><td>3.093000</td><td>23.40</td><td>10.1</td><td>46</td><td>22.6</td><td>AV</td><td>L1</td><td>GND</td></tr> <tr><td>3.322500</td><td>21.40</td><td>10.1</td><td>46</td><td>24.6</td><td>AV</td><td>L1</td><td>GND</td></tr> </tbody> </table>		Frequency MHz	Level dBuV	Transd dB	Limit dBuV	Margin dB	Detector	Line	PE	0.154500	35.40	10.0	56	20.4	AV	L1	GND	1.315500	23.20	10.1	46	22.8	AV	L1	GND	1.545000	23.10	10.1	46	22.9	AV	L1	GND	1.779000	24.10	10.1	46	21.9	AV	L1	GND	3.093000	23.40	10.1	46	22.6	AV	L1	GND	3.322500	21.40	10.1	46	24.6	AV	L1	GND
Frequency MHz	Level dBuV	Transd dB	Limit dBuV	Margin dB	Detector	Line	PE																																																		
0.154500	35.40	10.0	56	20.4	AV	L1	GND																																																		
1.315500	23.20	10.1	46	22.8	AV	L1	GND																																																		
1.545000	23.10	10.1	46	22.9	AV	L1	GND																																																		
1.779000	24.10	10.1	46	21.9	AV	L1	GND																																																		
3.093000	23.40	10.1	46	22.6	AV	L1	GND																																																		
3.322500	21.40	10.1	46	24.6	AV	L1	GND																																																		
Test Mode 1	N																																																								
<p><b>SCAN TABLE: "Voltage (9K-30M) FIN"</b> Short Description: 150K-30M Voltage</p>																																																									
<p><b>MEASUREMENT RESULT: "CTL240912207_fin"</b></p> <p>9/25/2024 2:16PM</p> <table border="1" style="width:100%; border-collapse: collapse;"> <thead> <tr> <th>Frequency MHz</th> <th>Level dBuV</th> <th>Transd dB</th> <th>Limit dBuV</th> <th>Margin dB</th> <th>Detector</th> <th>Line</th> <th>PE</th> </tr> </thead> <tbody> <tr><td>0.154500</td><td>49.60</td><td>10.0</td><td>66</td><td>16.2</td><td>QP</td><td>N</td><td>GND</td></tr> <tr><td>0.307500</td><td>38.20</td><td>10.0</td><td>60</td><td>21.8</td><td>QP</td><td>N</td><td>GND</td></tr> <tr><td>0.388500</td><td>40.50</td><td>10.0</td><td>58</td><td>17.6</td><td>QP</td><td>N</td><td>GND</td></tr> <tr><td>0.465000</td><td>37.40</td><td>10.0</td><td>57</td><td>19.2</td><td>QP</td><td>N</td><td>GND</td></tr> <tr><td>0.618000</td><td>36.80</td><td>10.0</td><td>56</td><td>19.2</td><td>QP</td><td>N</td><td>GND</td></tr> <tr><td>0.699000</td><td>35.90</td><td>10.0</td><td>56</td><td>20.1</td><td>QP</td><td>N</td><td>GND</td></tr> </tbody> </table>		Frequency MHz	Level dBuV	Transd dB	Limit dBuV	Margin dB	Detector	Line	PE	0.154500	49.60	10.0	66	16.2	QP	N	GND	0.307500	38.20	10.0	60	21.8	QP	N	GND	0.388500	40.50	10.0	58	17.6	QP	N	GND	0.465000	37.40	10.0	57	19.2	QP	N	GND	0.618000	36.80	10.0	56	19.2	QP	N	GND	0.699000	35.90	10.0	56	20.1	QP	N	GND
Frequency MHz	Level dBuV	Transd dB	Limit dBuV	Margin dB	Detector	Line	PE																																																		
0.154500	49.60	10.0	66	16.2	QP	N	GND																																																		
0.307500	38.20	10.0	60	21.8	QP	N	GND																																																		
0.388500	40.50	10.0	58	17.6	QP	N	GND																																																		
0.465000	37.40	10.0	57	19.2	QP	N	GND																																																		
0.618000	36.80	10.0	56	19.2	QP	N	GND																																																		
0.699000	35.90	10.0	56	20.1	QP	N	GND																																																		
<p><b>MEASUREMENT RESULT: "CTL240912207_fin2"</b></p> <p>9/25/2024 2:16PM</p> <table border="1" style="width:100%; border-collapse: collapse;"> <thead> <tr> <th>Frequency MHz</th> <th>Level dBuV</th> <th>Transd dB</th> <th>Limit dBuV</th> <th>Margin dB</th> <th>Detector</th> <th>Line</th> <th>PE</th> </tr> </thead> <tbody> <tr><td>0.154500</td><td>36.60</td><td>10.0</td><td>56</td><td>19.2</td><td>AV</td><td>N</td><td>GND</td></tr> <tr><td>0.388500</td><td>29.30</td><td>10.0</td><td>48</td><td>18.8</td><td>AV</td><td>N</td><td>GND</td></tr> <tr><td>0.618000</td><td>26.40</td><td>10.0</td><td>46</td><td>19.6</td><td>AV</td><td>N</td><td>GND</td></tr> <tr><td>0.694500</td><td>27.30</td><td>10.0</td><td>46</td><td>18.7</td><td>AV</td><td>N</td><td>GND</td></tr> <tr><td>0.928500</td><td>26.50</td><td>10.1</td><td>46</td><td>19.5</td><td>AV</td><td>N</td><td>GND</td></tr> <tr><td>1.545000</td><td>22.40</td><td>10.1</td><td>46</td><td>23.6</td><td>AV</td><td>N</td><td>GND</td></tr> </tbody> </table>		Frequency MHz	Level dBuV	Transd dB	Limit dBuV	Margin dB	Detector	Line	PE	0.154500	36.60	10.0	56	19.2	AV	N	GND	0.388500	29.30	10.0	48	18.8	AV	N	GND	0.618000	26.40	10.0	46	19.6	AV	N	GND	0.694500	27.30	10.0	46	18.7	AV	N	GND	0.928500	26.50	10.1	46	19.5	AV	N	GND	1.545000	22.40	10.1	46	23.6	AV	N	GND
Frequency MHz	Level dBuV	Transd dB	Limit dBuV	Margin dB	Detector	Line	PE																																																		
0.154500	36.60	10.0	56	19.2	AV	N	GND																																																		
0.388500	29.30	10.0	48	18.8	AV	N	GND																																																		
0.618000	26.40	10.0	46	19.6	AV	N	GND																																																		
0.694500	27.30	10.0	46	18.7	AV	N	GND																																																		
0.928500	26.50	10.1	46	19.5	AV	N	GND																																																		
1.545000	22.40	10.1	46	23.6	AV	N	GND																																																		

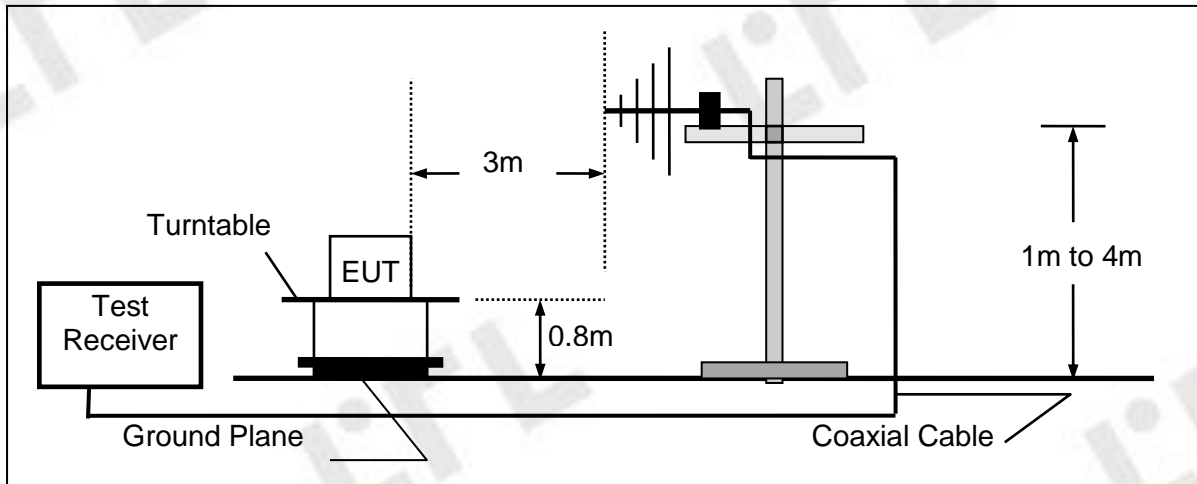
### 4.2. Radiated Emission

#### TEST CONFIGURATION

Radiated Emission Test Set-Up  
Frequency range 9KHz – 30MHz



Frequency range 30MHz – 1000MHz



## TEST PROCEDURE

- 1 The EUT was placed on a turn table which is 0.8m above ground plane.
- 2 Maximum procedure was performed by raising the receiving antenna from 1m to 4m and rotating the turn table from 0°C to 360°C to acquire the highest emissions from EUT
- 3 And also, each emission was to be maximized by changing the polarization of receiving antenna both horizontal and vertical.
- 4 Repeat above procedures until all frequency measurements have been completed.

## Field Strength Calculation

The field strength is calculated by adding the Antenna Factor and Cable Factor and subtracting the Amplifier Gain and Duty Cycle Correction Factor(if any) from the measured reading. The basic equation with a sample calculation is as follows:

$$FS = RA + AF + CL - AG$$

Where FS = Field Strength	CL = Cable Attenuation Factor (Cable Loss)
RA = Reading Amplitude	AG = Amplifier Gain
AF = Antenna Factor	

For example

Frequency (MHz)	FS (dB $\mu$ V/m)	RA (dB $\mu$ V/m)	AF (dB)	CL (dB)	AG (dB)	Transd (dB)
300.00	36.8	58.1	12.4	1.5	31.90	-18.0

$$\text{Transd} = \text{AF} + \text{CL} - \text{AG}$$

## RADIATION LIMIT

Except as provided elsewhere in this Subpart, the emissions from an intentional radiator shall not exceed the field strength levels specified in the following table:

### 9k~30MHz:

Frequency Range (MHz)	E-field Strength Limit @ 30m (mV/m)	E-field Strength Limit @ 3m (dB $\mu$ V/m)
0.009-0.490	2400/F(kHz)	129-94
0.490-1.705	24000/F(kHz)	74-63
1.705-30	30	70

Note: Where the limits have been defined at one distance, and a signal level measured at another, the limits have been extrapolated using the following formula:

$$\text{Extrapolation(dB)} = 40 \log_{10}(\text{Measurement Distance} / \text{Specification Distance})$$

Note:

- (1) The tighter limit shall apply at the edge between two frequency bands.
- (2) dBuV/m = 20\*log(uV/m)

**30M~1GHz:**

Frequency (MHz)	Distance (Meters)	Radiated (dB $\mu$ V/m)	Radiated ( $\mu$ V/m)
30-88	3	40.0	100
88-216	3	43.5	150
216-960	3	46.0	200
Above 960	3	54.0	500

## Note:

- (1) The tighter limit shall apply at the edge between two frequency bands.
- (2) Distance refers to the distance in meters between the test instrument antenna and the closest point of any part of the E.U.T.

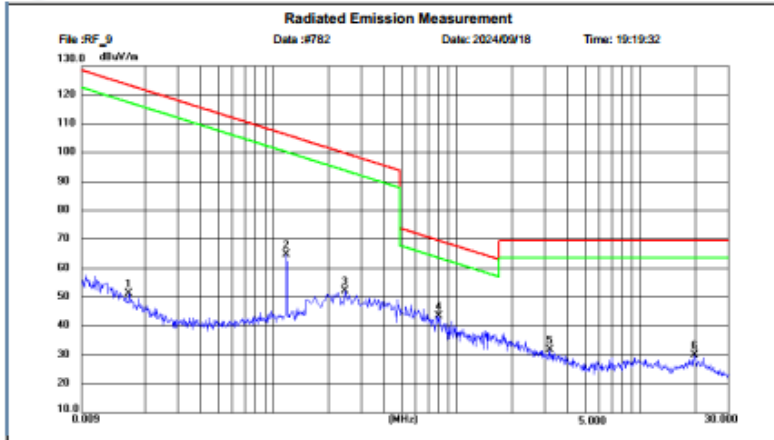
**TEST RESULTS**

**WORST-CASE RADIATED EMISSION BELOW 30 MHz**

**Test Mode 1**



Shenzhen CTL Testing Technology Co., Ltd  
Tel: +86-755-89486194



Site: LAB Chamber 2  
Limit: FCC Part 15 9K-30MHZ-2  
EUT:  
MN: T39W  
Mode: AC Charging+Wireless output  
Note: Yuwei Technology (Dongguan) Co., Ltd.

Polarization: *Horizontal*  
Power:  
Distance: 3m

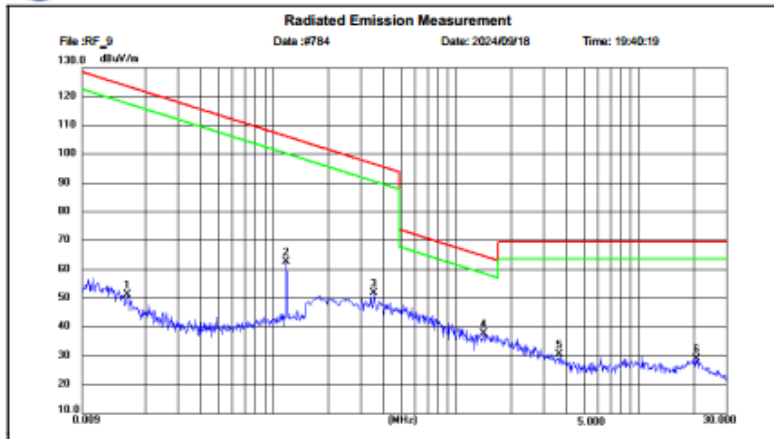
Temperature: 25(C)  
Humidity: 50 %

No.	Frequency (MHz)	Reading (dBuV)	Factor (dB/m)	Level (dBuV/m)	Limit (dBuV/m)	Margin (dB)	Detector	P/F
1	0.0164	29.60	21.53	51.13	123.31	72.18	peak	P
2	0.1177	43.06	21.68	64.74	106.19	41.45	peak	P
3	0.2445	29.25	22.95	52.20	99.84	47.64	peak	P
4	0.7980	24.91	18.52	43.43	69.56	26.13	peak	P
5	3.2055	13.74	18.12	31.86	69.54	37.68	peak	P
6	19.8060	8.67	21.19	29.86	69.54	39.68	peak	P

**Test Mode 4**



Shenzhen CTL Testing Technology Co., Ltd  
Tel: +86-755-89486194



Site: LAB Chamber 2  
Limit: FCC Part 15 9K-30MHZ-2  
EUT:  
MN: T39W  
Mode: Wireless output  
Note: Yuwei Technology (Dongguan) Co., Ltd.


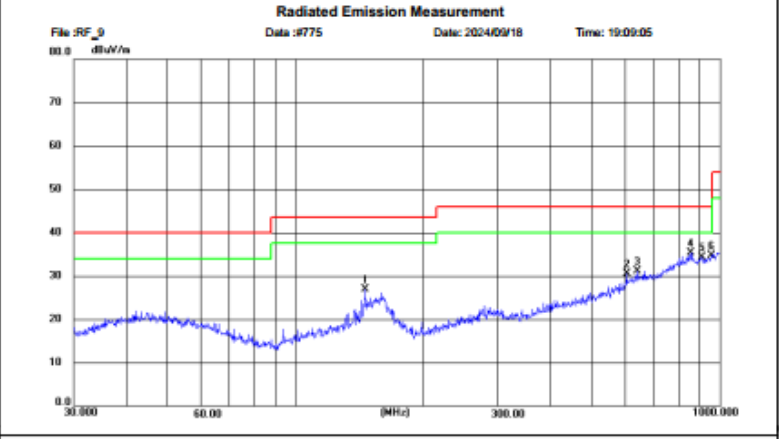
Polarization: *Horizontal*  
Power:  
Distance: 3m


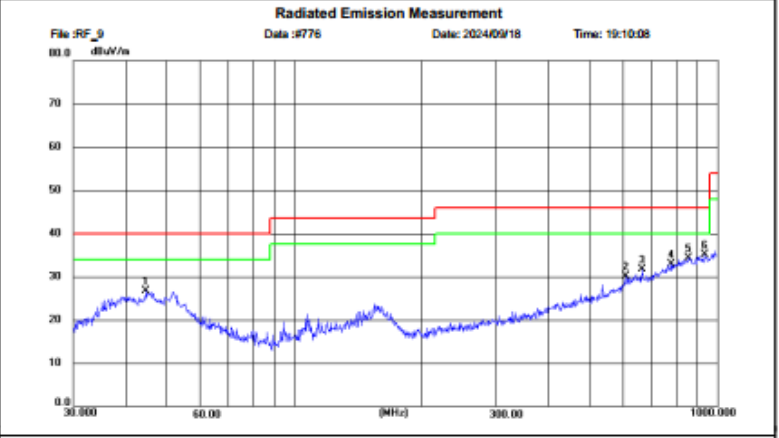
Temperature: 25(C)  
Humidity: 50 %

No.	Frequency (MHz)	Reading (dBuV)	Factor (dB/m)	Level (dBuV/m)	Limit (dBuV/m)	Margin (dB)	Detector	P/F
1	0.0159	29.71	21.62	51.33	123.58	72.25	peak	P
2	0.1177	40.89	21.68	62.57	106.19	43.62	peak	P
3	0.3525	28.57	23.13	51.70	96.66	44.96	peak	P
4	1.4100	21.31	16.53	37.84	64.62	26.78	peak	P
5	3.6870	12.68	17.93	30.61	69.54	38.93	peak	P
6	20.8005	8.40	20.80	29.20	69.54	40.34	peak	P



**Radiated Emission Test Data 30-1000MHz:**

Test Mode 1	Horizontal																																																																																				
 Shenzhen CTL Testing Technology Co., Ltd Tel: +86-755-89486194																																																																																					
<b>Radiated Emission Measurement</b> File :RF_0      Date :#775      Date: 2024/09/18      Time: 19:09:05 																																																																																					
Site: LAB Chamber 2      Polarization: <b>Horizontal</b> Temperature: 25(C) Limit: FCC Part15 RE-Class C_30-1000MHz      Power:      Humidity: 50 % EUT:      Distance: 3m MN: T39W Mode: AC Charging+Wireless output Note: Yuwei Technology (Dongguan) Co., Ltd.																																																																																					
<table border="1" style="width:100%; border-collapse: collapse;"> <thead> <tr> <th>No.</th> <th>Frequency (MHz)</th> <th>Reading (dBuV)</th> <th>Factor (dB/m)</th> <th>Level (dBuV/m)</th> <th>Limit (dBuV/m)</th> <th>Margin (dB)</th> <th>Detector</th> <th>Height (cm)</th> <th>Azimuth (deg.)</th> <th>P/F</th> <th>Remark</th> </tr> </thead> <tbody> <tr> <td>1</td> <td>145.9250</td> <td>12.70</td> <td>14.30</td> <td>27.00</td> <td>43.50</td> <td>16.50</td> <td>peak</td> <td>100</td> <td>62</td> <td>P</td> <td></td> </tr> <tr> <td>2</td> <td>805.1285</td> <td>7.73</td> <td>22.70</td> <td>30.43</td> <td>46.00</td> <td>15.57</td> <td>peak</td> <td>100</td> <td>20</td> <td>P</td> <td></td> </tr> <tr> <td>3</td> <td>842.0165</td> <td>7.66</td> <td>23.46</td> <td>31.12</td> <td>46.00</td> <td>14.88</td> <td>peak</td> <td>100</td> <td>165</td> <td>P</td> <td></td> </tr> <tr> <td>4</td> <td>855.1484</td> <td>7.85</td> <td>27.44</td> <td>35.29</td> <td>46.00</td> <td>10.71</td> <td>peak</td> <td>100</td> <td>259</td> <td>P</td> <td></td> </tr> <tr> <td>5</td> <td>911.6624</td> <td>6.44</td> <td>27.92</td> <td>34.36</td> <td>46.00</td> <td>11.64</td> <td>peak</td> <td>100</td> <td>351</td> <td>P</td> <td></td> </tr> <tr> <td>6</td> <td>957.5343</td> <td>6.32</td> <td>28.38</td> <td>34.70</td> <td>46.00</td> <td>11.30</td> <td>peak</td> <td>100</td> <td>351</td> <td>P</td> <td></td> </tr> </tbody> </table>		No.	Frequency (MHz)	Reading (dBuV)	Factor (dB/m)	Level (dBuV/m)	Limit (dBuV/m)	Margin (dB)	Detector	Height (cm)	Azimuth (deg.)	P/F	Remark	1	145.9250	12.70	14.30	27.00	43.50	16.50	peak	100	62	P		2	805.1285	7.73	22.70	30.43	46.00	15.57	peak	100	20	P		3	842.0165	7.66	23.46	31.12	46.00	14.88	peak	100	165	P		4	855.1484	7.85	27.44	35.29	46.00	10.71	peak	100	259	P		5	911.6624	6.44	27.92	34.36	46.00	11.64	peak	100	351	P		6	957.5343	6.32	28.38	34.70	46.00	11.30	peak	100	351	P	
No.	Frequency (MHz)	Reading (dBuV)	Factor (dB/m)	Level (dBuV/m)	Limit (dBuV/m)	Margin (dB)	Detector	Height (cm)	Azimuth (deg.)	P/F	Remark																																																																										
1	145.9250	12.70	14.30	27.00	43.50	16.50	peak	100	62	P																																																																											
2	805.1285	7.73	22.70	30.43	46.00	15.57	peak	100	20	P																																																																											
3	842.0165	7.66	23.46	31.12	46.00	14.88	peak	100	165	P																																																																											
4	855.1484	7.85	27.44	35.29	46.00	10.71	peak	100	259	P																																																																											
5	911.6624	6.44	27.92	34.36	46.00	11.64	peak	100	351	P																																																																											
6	957.5343	6.32	28.38	34.70	46.00	11.30	peak	100	351	P																																																																											

Test Mode 1	Vertical																																																																																				
 Shenzhen CTL Testing Technology Co., Ltd Tel: +86-755-89486194																																																																																					
<b>Radiated Emission Measurement</b> File :RF_0      Date :#776      Date: 2024/09/18      Time: 19:10:08 																																																																																					
Site: LAB Chamber 2      Polarization: <b>Vertical</b> Temperature: 25(C) Limit: FCC Part15 RE-Class C_30-1000MHz      Power:      Humidity: 50 % EUT:      Distance: 3m MN: T39W Mode: AC Charging+Wireless output Note: Yuwei Technology (Dongguan) Co., Ltd.																																																																																					
<table border="1" style="width:100%; border-collapse: collapse;"> <thead> <tr> <th>No.</th> <th>Frequency (MHz)</th> <th>Reading (dBuV)</th> <th>Factor (dB/m)</th> <th>Level (dBuV/m)</th> <th>Limit (dBuV/m)</th> <th>Margin (dB)</th> <th>Detector</th> <th>Height (cm)</th> <th>Azimuth (deg.)</th> <th>P/F</th> <th>Remark</th> </tr> </thead> <tbody> <tr> <td>1</td> <td>44.6064</td> <td>11.86</td> <td>14.91</td> <td>26.77</td> <td>40.00</td> <td>13.23</td> <td>peak</td> <td>100</td> <td>277</td> <td>P</td> <td></td> </tr> <tr> <td>2</td> <td>609.3873</td> <td>7.39</td> <td>22.79</td> <td>30.18</td> <td>46.00</td> <td>15.82</td> <td>peak</td> <td>100</td> <td>351</td> <td>P</td> <td></td> </tr> <tr> <td>3</td> <td>665.2201</td> <td>8.32</td> <td>23.32</td> <td>31.64</td> <td>46.00</td> <td>14.36</td> <td>peak</td> <td>100</td> <td>8</td> <td>P</td> <td></td> </tr> <tr> <td>4</td> <td>779.2651</td> <td>6.81</td> <td>26.14</td> <td>32.95</td> <td>46.00</td> <td>13.05</td> <td>peak</td> <td>100</td> <td>91</td> <td>P</td> <td></td> </tr> <tr> <td>5</td> <td>855.1485</td> <td>6.89</td> <td>27.44</td> <td>34.33</td> <td>46.00</td> <td>11.67</td> <td>peak</td> <td>100</td> <td>174</td> <td>P</td> <td></td> </tr> <tr> <td>6</td> <td>937.5989</td> <td>6.74</td> <td>28.33</td> <td>35.07</td> <td>46.00</td> <td>10.93</td> <td>peak</td> <td>100</td> <td>287</td> <td>P</td> <td></td> </tr> </tbody> </table>		No.	Frequency (MHz)	Reading (dBuV)	Factor (dB/m)	Level (dBuV/m)	Limit (dBuV/m)	Margin (dB)	Detector	Height (cm)	Azimuth (deg.)	P/F	Remark	1	44.6064	11.86	14.91	26.77	40.00	13.23	peak	100	277	P		2	609.3873	7.39	22.79	30.18	46.00	15.82	peak	100	351	P		3	665.2201	8.32	23.32	31.64	46.00	14.36	peak	100	8	P		4	779.2651	6.81	26.14	32.95	46.00	13.05	peak	100	91	P		5	855.1485	6.89	27.44	34.33	46.00	11.67	peak	100	174	P		6	937.5989	6.74	28.33	35.07	46.00	10.93	peak	100	287	P	
No.	Frequency (MHz)	Reading (dBuV)	Factor (dB/m)	Level (dBuV/m)	Limit (dBuV/m)	Margin (dB)	Detector	Height (cm)	Azimuth (deg.)	P/F	Remark																																																																										
1	44.6064	11.86	14.91	26.77	40.00	13.23	peak	100	277	P																																																																											
2	609.3873	7.39	22.79	30.18	46.00	15.82	peak	100	351	P																																																																											
3	665.2201	8.32	23.32	31.64	46.00	14.36	peak	100	8	P																																																																											
4	779.2651	6.81	26.14	32.95	46.00	13.05	peak	100	91	P																																																																											
5	855.1485	6.89	27.44	34.33	46.00	11.67	peak	100	174	P																																																																											
6	937.5989	6.74	28.33	35.07	46.00	10.93	peak	100	287	P																																																																											

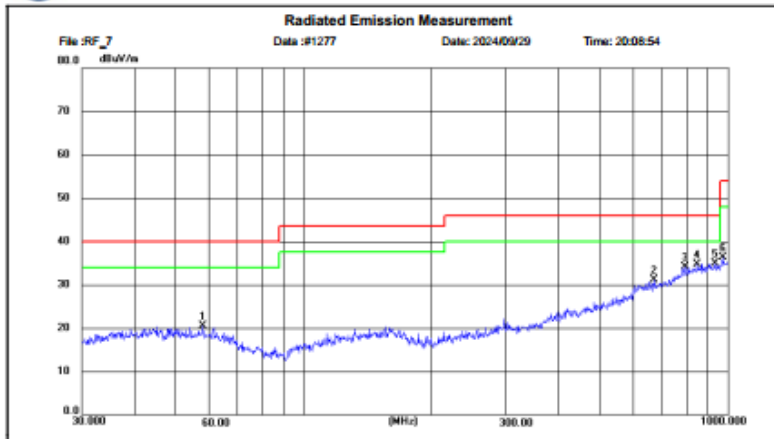


Test Mode 4

Horizontal



Shenzhen CTL Testing Technology Co., Ltd  
Tel: +86-755-89486194



Site: LAB Chamber 2  
Limit: FCC Part15 RE-Class C\_30-1000MHz  
EUT:  
MN: T39W  
Mode: Wireless output  
Note: Yuwei Technology (Dongguan) Co., Ltd.

Polarization: **Horizontal**      Temperature: 25(C)  
Power:      Humidity: 50 %  
Distance: 3m

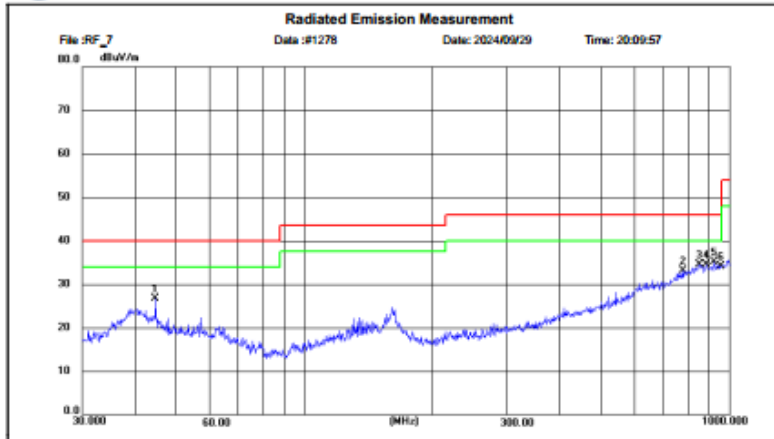
No.	Frequency (MHz)	Reading (dBuV)	Factor (dB/m)	Level (dBuV/m)	Limit (dBuV/m)	Margin (dB)	Detector	Height (cm)	Azimuth (deg.)	P/F	Remark
1	57.8215	6.11	14.30	20.41	40.00	19.59	peak	100	177	P	
2	671.3715	7.73	23.33	31.06	46.00	14.94	peak	100	62	P	
3	794.4400	7.52	26.51	34.03	46.00	11.97	peak	100	9	P	
4	849.1722	7.47	27.31	34.78	46.00	11.22	peak	100	360	P	
5	937.5990	6.58	28.33	34.91	46.00	11.09	peak	100	115	P	
6	977.4651	8.11	28.28	36.39	54.00	17.61	peak	100	334	P	

Test Mode 4

Vertical



Shenzhen CTL Testing Technology Co., Ltd  
Tel: +86-755-89486194



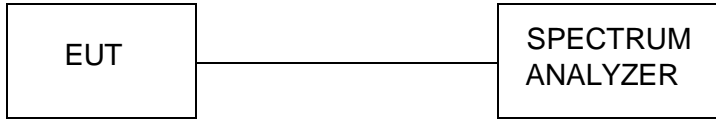
Site: LAB Chamber 2  
Limit: FCC Part15 RE-Class C\_30-1000MHz  
EUT:  
MN: T39W  
Mode: Wireless output  
Note: Yuwei Technology (Dongguan) Co., Ltd.

Polarization: **Vertical**      Temperature: 25(C)  
Power:      Humidity: 50 %  
Distance: 3m

No.	Frequency (MHz)	Reading (dBuV)	Factor (dB/m)	Level (dBuV/m)	Limit (dBuV/m)	Margin (dB)	Detector	Height (cm)	Azimuth (deg.)	P/F	Remark
1	44.5868	11.86	14.91	26.77	40.00	13.23	peak	100	131	P	
2	779.2651	7.03	26.14	33.17	46.00	12.83	peak	100	204	P	
3	851.4084	7.14	27.35	34.49	46.00	11.51	peak	100	277	P	
4	881.7932	7.29	27.22	34.51	46.00	11.49	peak	100	6	P	
5	921.7074	7.10	28.03	35.13	46.00	10.87	peak	100	0	P	
6	957.9542	5.77	28.39	34.16	46.00	11.84	peak	100	257	P	

### 4.3. 20dB Bandwidth/99% Bandwidth

#### TEST CONFIGURATION



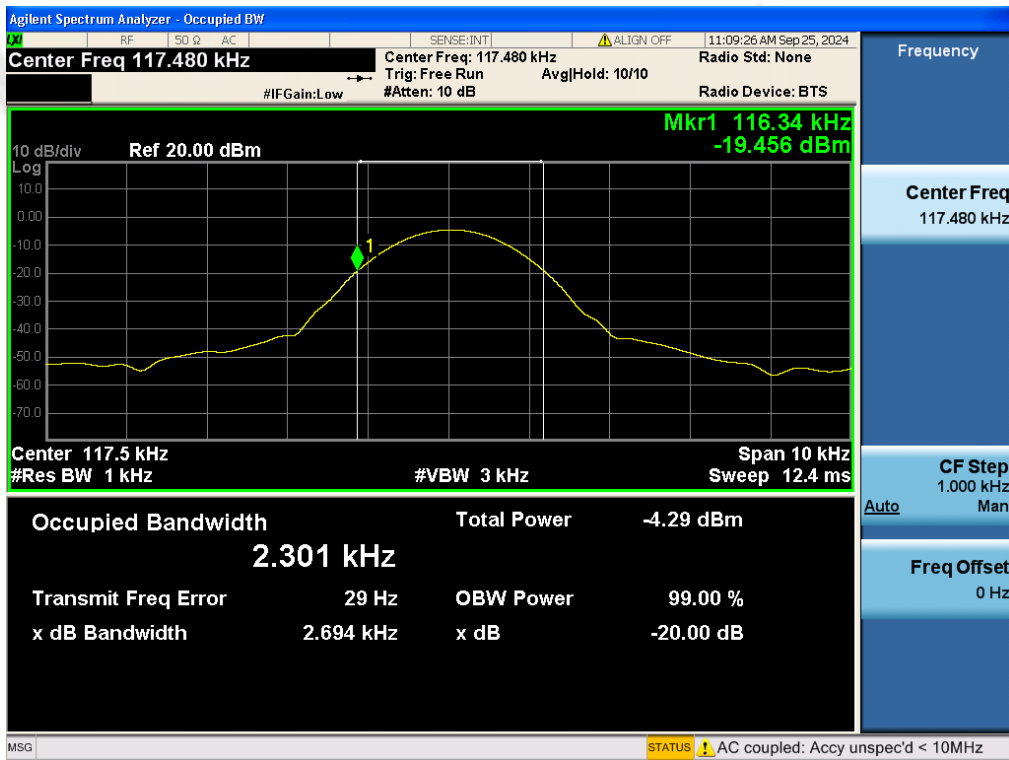
#### TEST PROCEDURE

The bandwidth of the fundamental frequency was measured by spectrum analyzer with 1KHz RBW and 3KHz VBW. The 20dB bandwidth is defined as the total spectrum the power of which is higher than peak power minus 20dB.

#### LIMIT

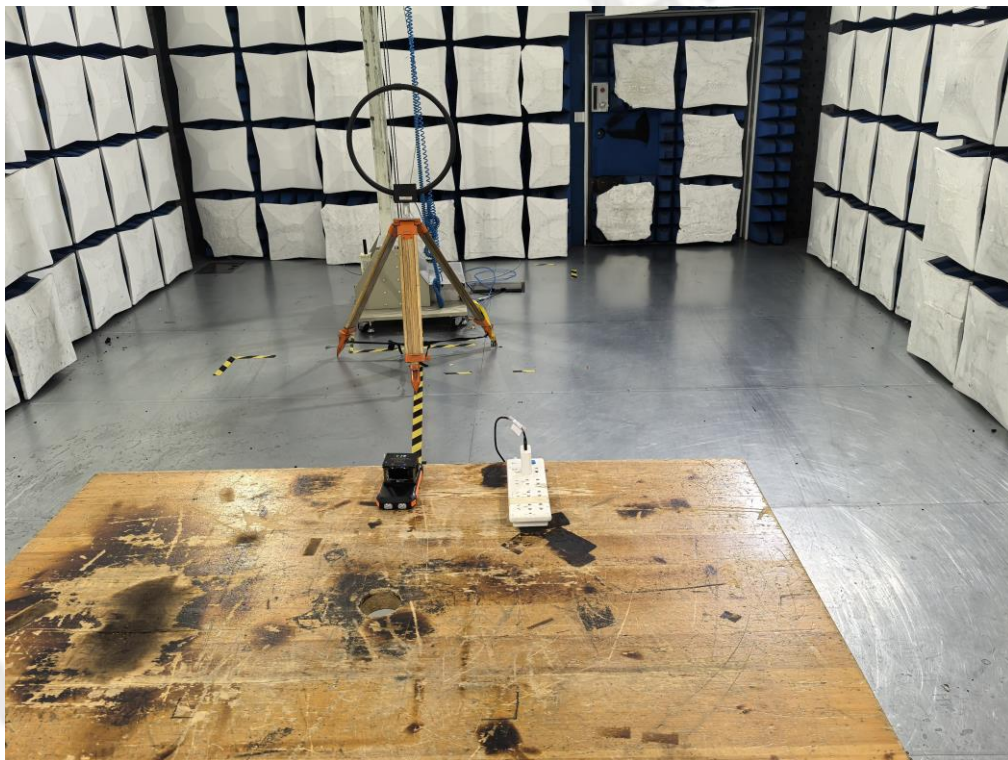
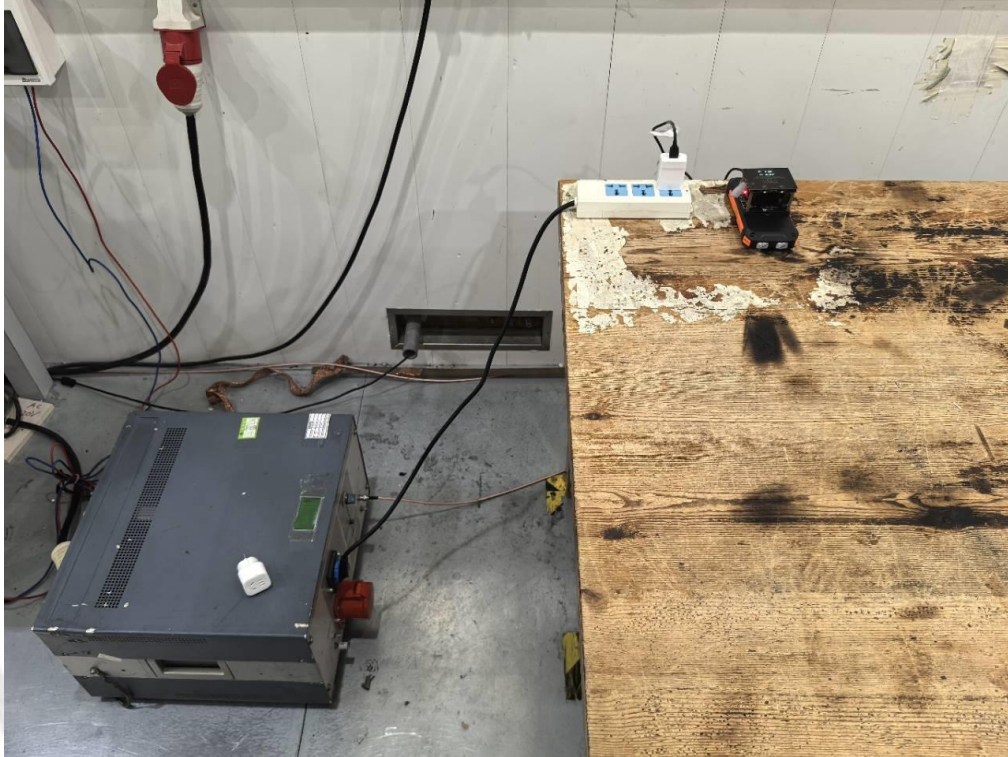
N/A

#### TEST RESULTS

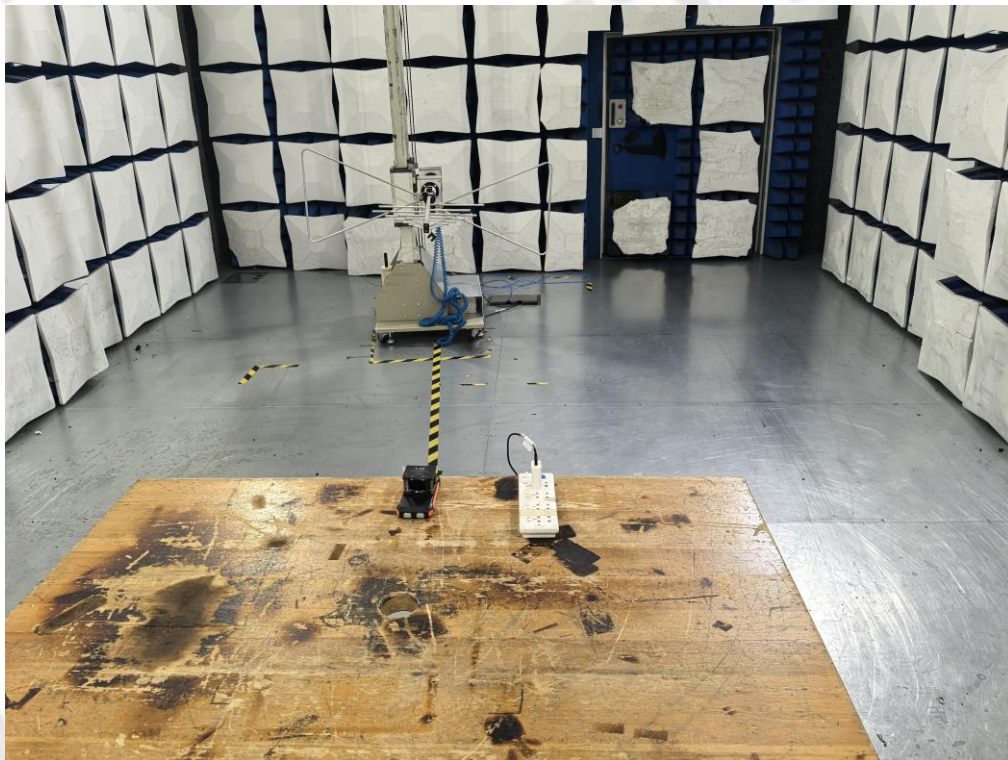


Frequency (kHz)	20dB Bandwidth (kHz)	Limit(kHz)	Verdict
117.480	2.694	/	PASS

### 5. Test Setup Photos of the EUT









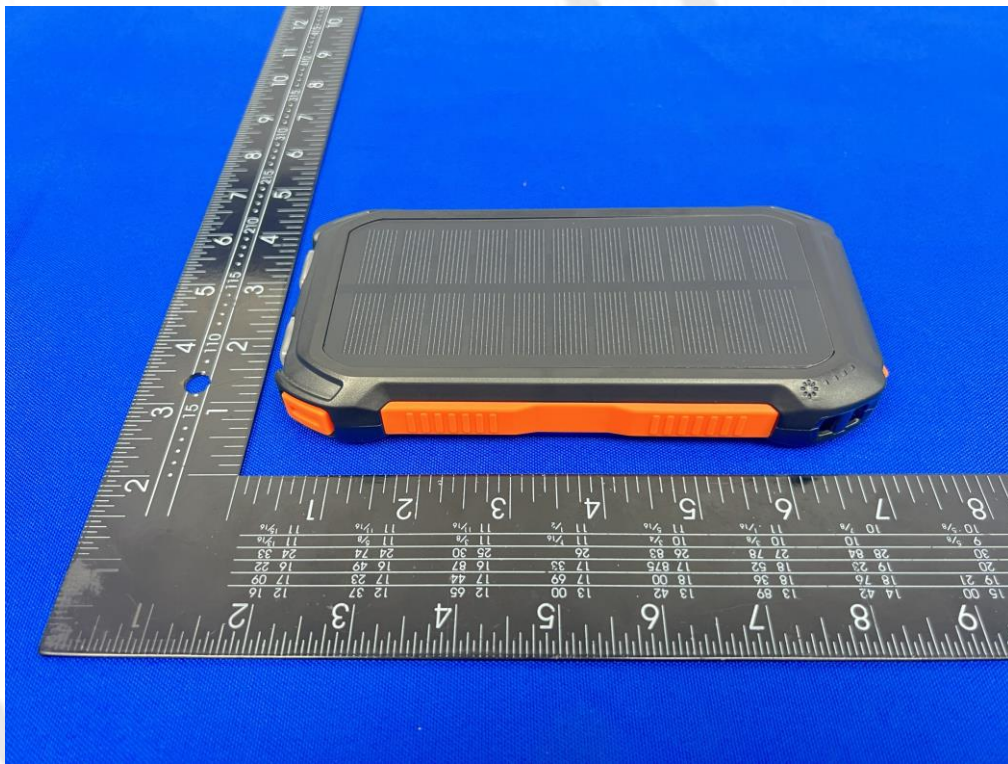
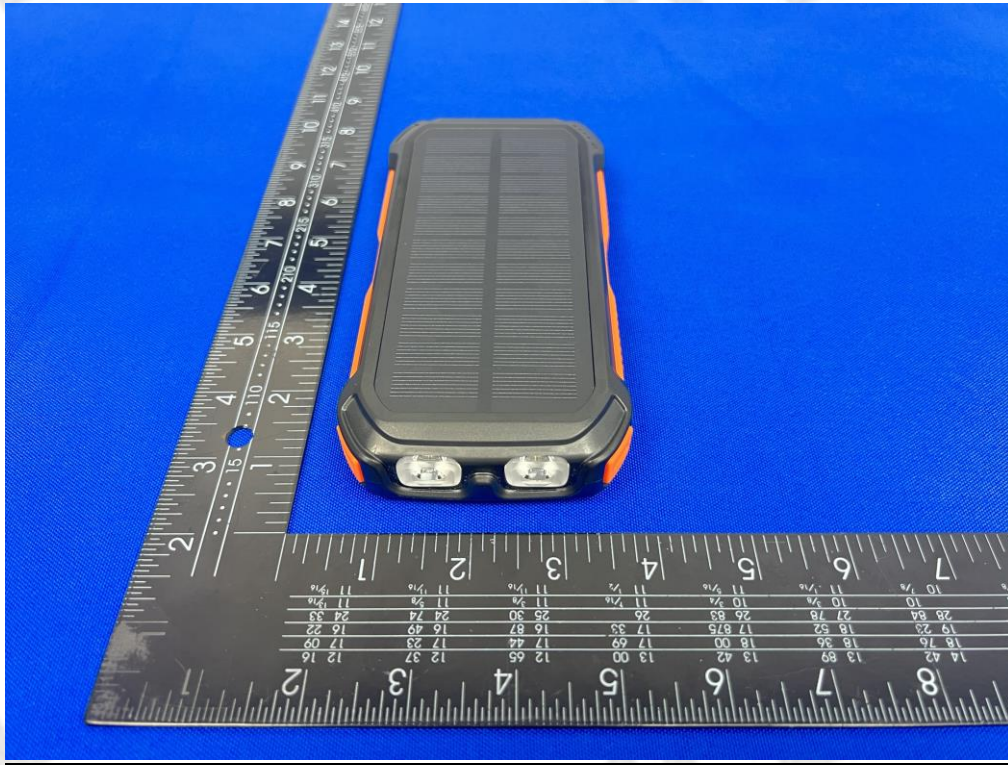


## 6. External and Internal Photos of the EUT

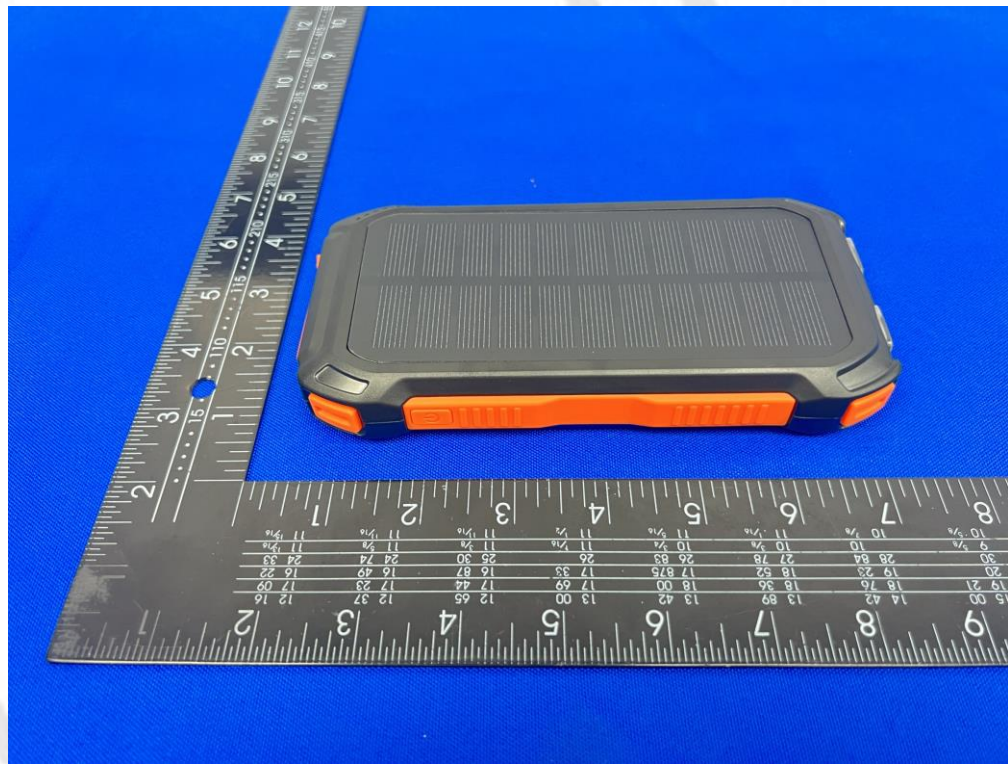
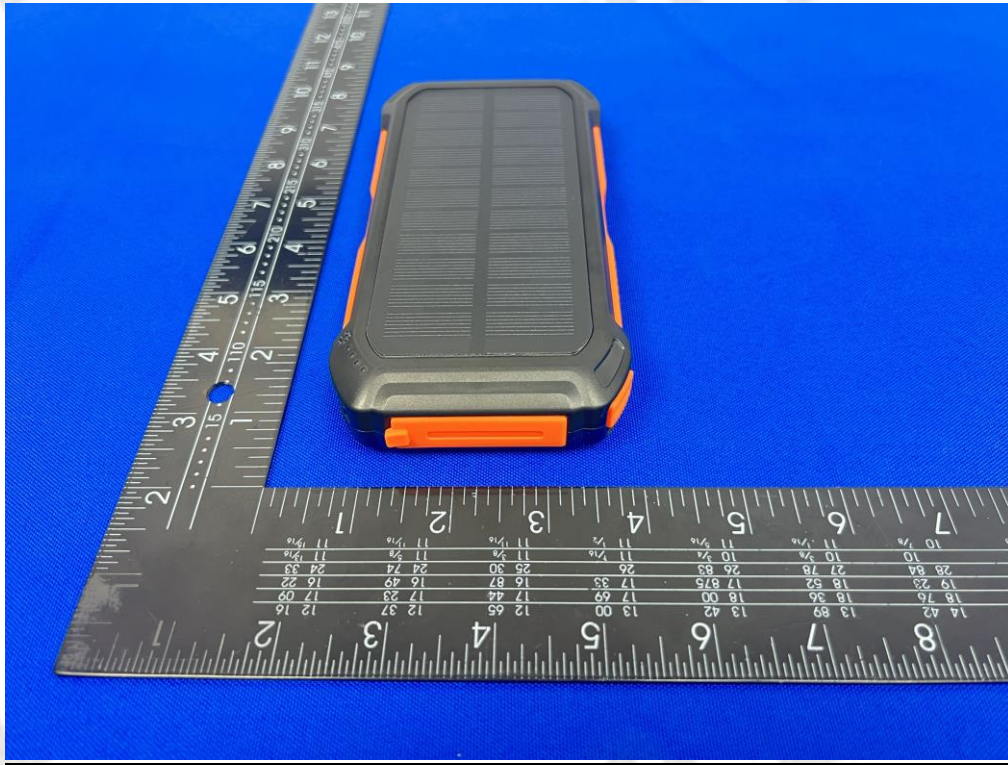
### External Photos of EUT

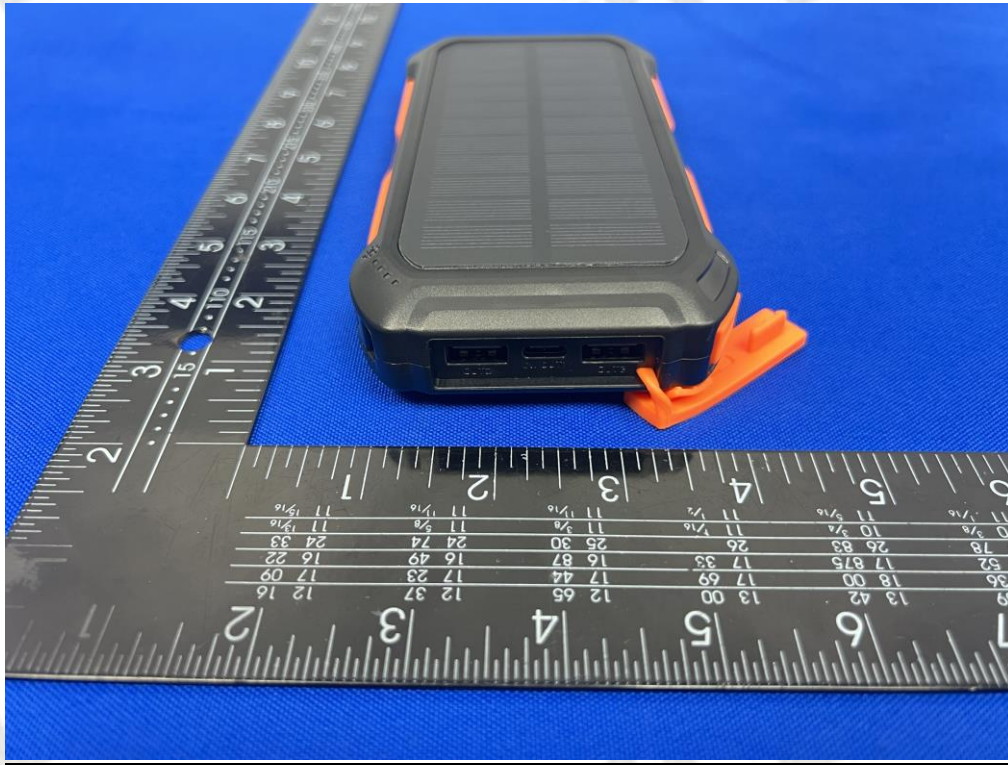






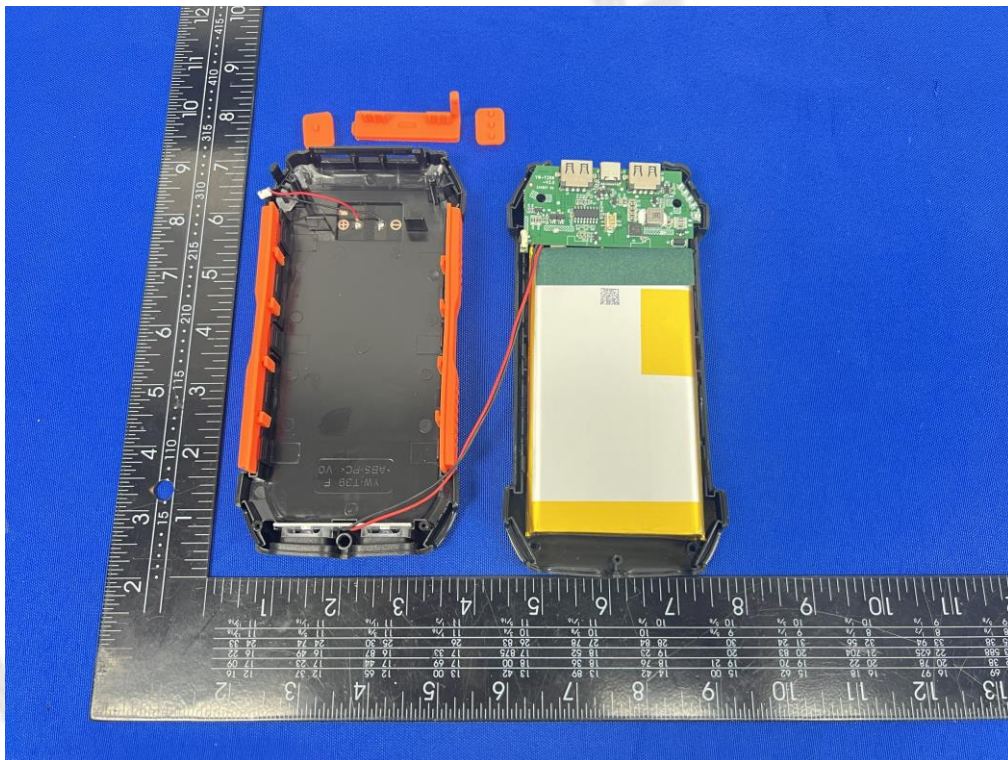




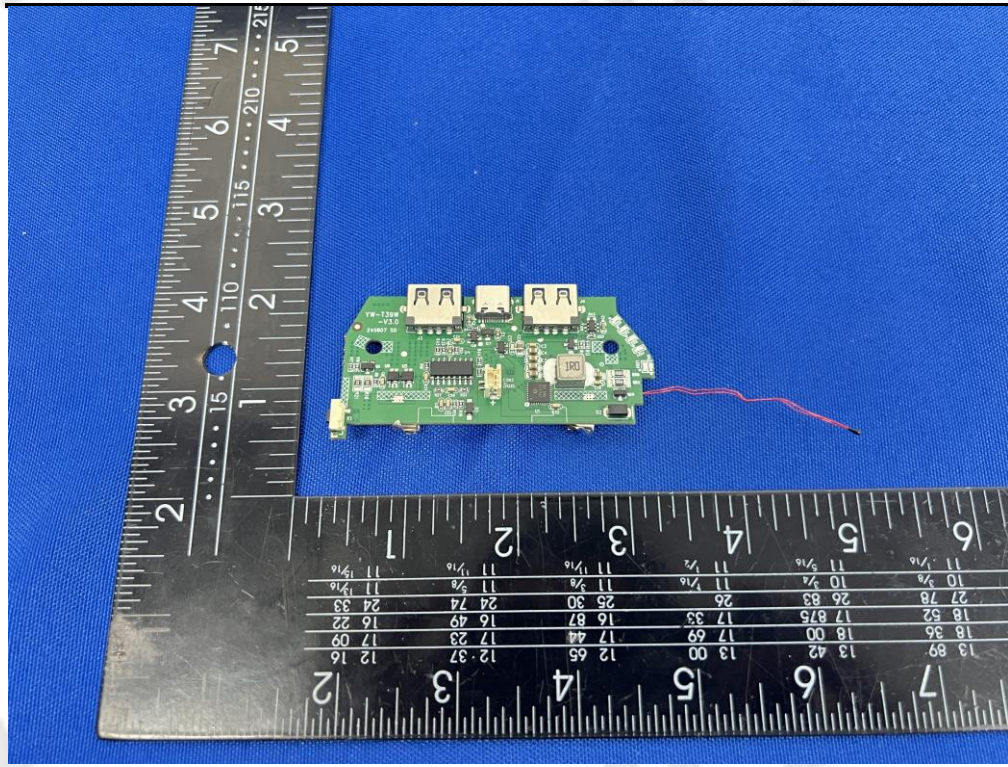
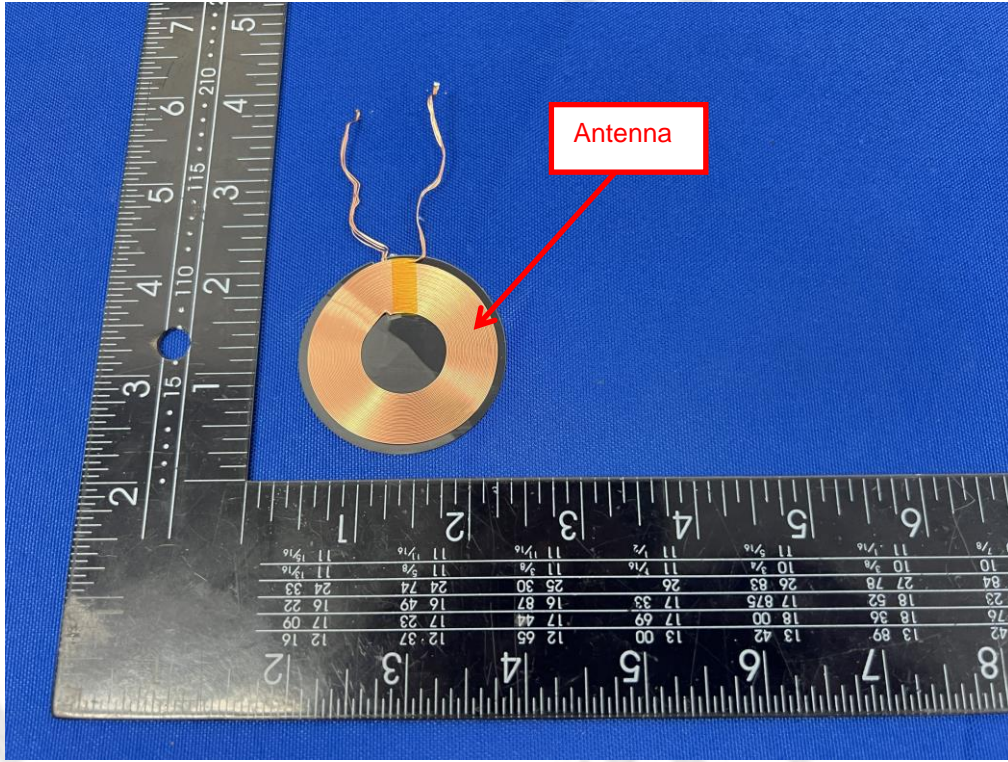




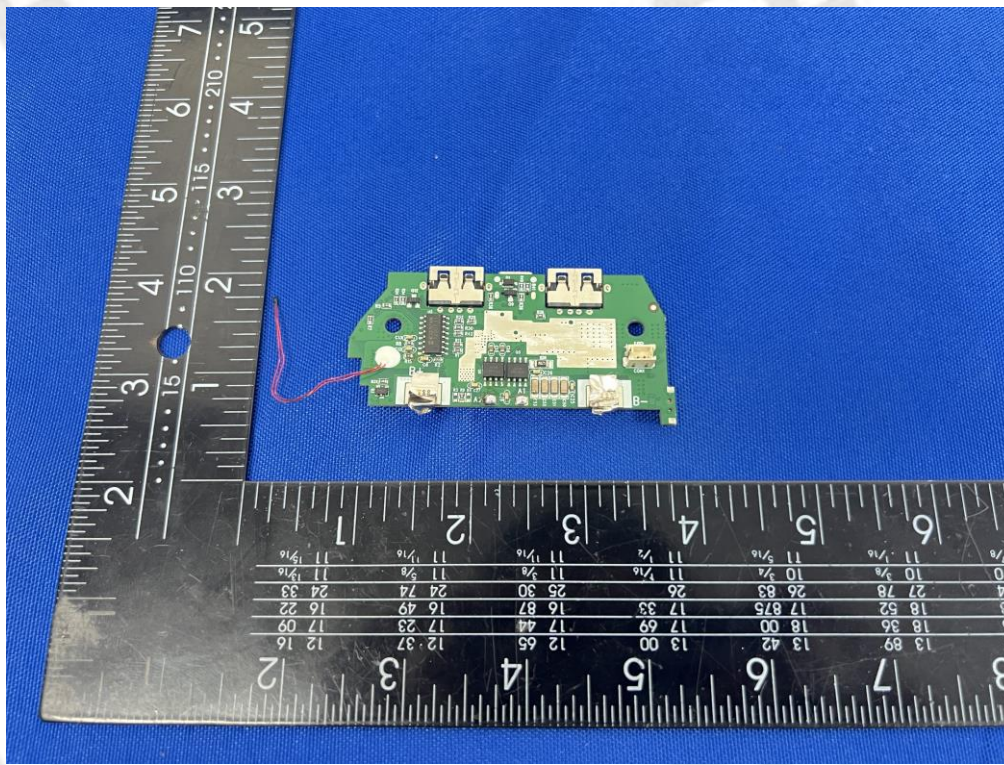
Internal Photos of EUT











.....End of Report.....