

Flanders Host Gateway User Guide



Introduction

This installation guide provides basic instructions for Gateway Host.

Product Description

The Flanders Host includes Bluetooth 5.1 Mesh and 10/100 Ethernet (Cloud Interface) Features. The 5.1Mesh is used for communicating with the Node Product or BLE App. The Host supports standard IT network communications and is easily integrated onto wired Ethernet networks for relaying data to and from the host application.

Architecturally attractive, the Host is easily surface mounted on the table or hung on solid and hollow walls

Product Features

1. Local Report Storage
2. Cloud Interface for “Real-Time” report and database acquisition (AWS)
3. iOS & Android App for commissioning
4. Embedded Web UI for reporting and diagnostics
5. Mesh Self-Healing Network
6. 10/100 Ethernet (Cloud Interface)
7. Bluetooth 5.1 Mesh
8. Power Switch
9. Reset Switch
10. Restore Switch
11. LCD Display

Hardware Features:

BLE 5.1 Mesh (SiLabs BG21),Cortex ARM Processor (SAMD2),4GB Flash (NAND),Ethernet 10/100
μUSB 5V @ 1A,LCD Display,LED Status Indicator....

Circuit Board Terminal Blocks

Ethernet Interface (IP): The Host has a female RJ-45(8P8C) connector for linking the device via Ethernet to the host application machine.

Reset Switch : The Host contains a reset button that when press ,the BLE Mesh function will restart.And the BLE app will disconnected with the unit.

Restore Switch: The Host contains a restore button for reset the host system when press the button and hold for a while until see the LCD display indicated the “Reboot”,then the unit will auto-restart.

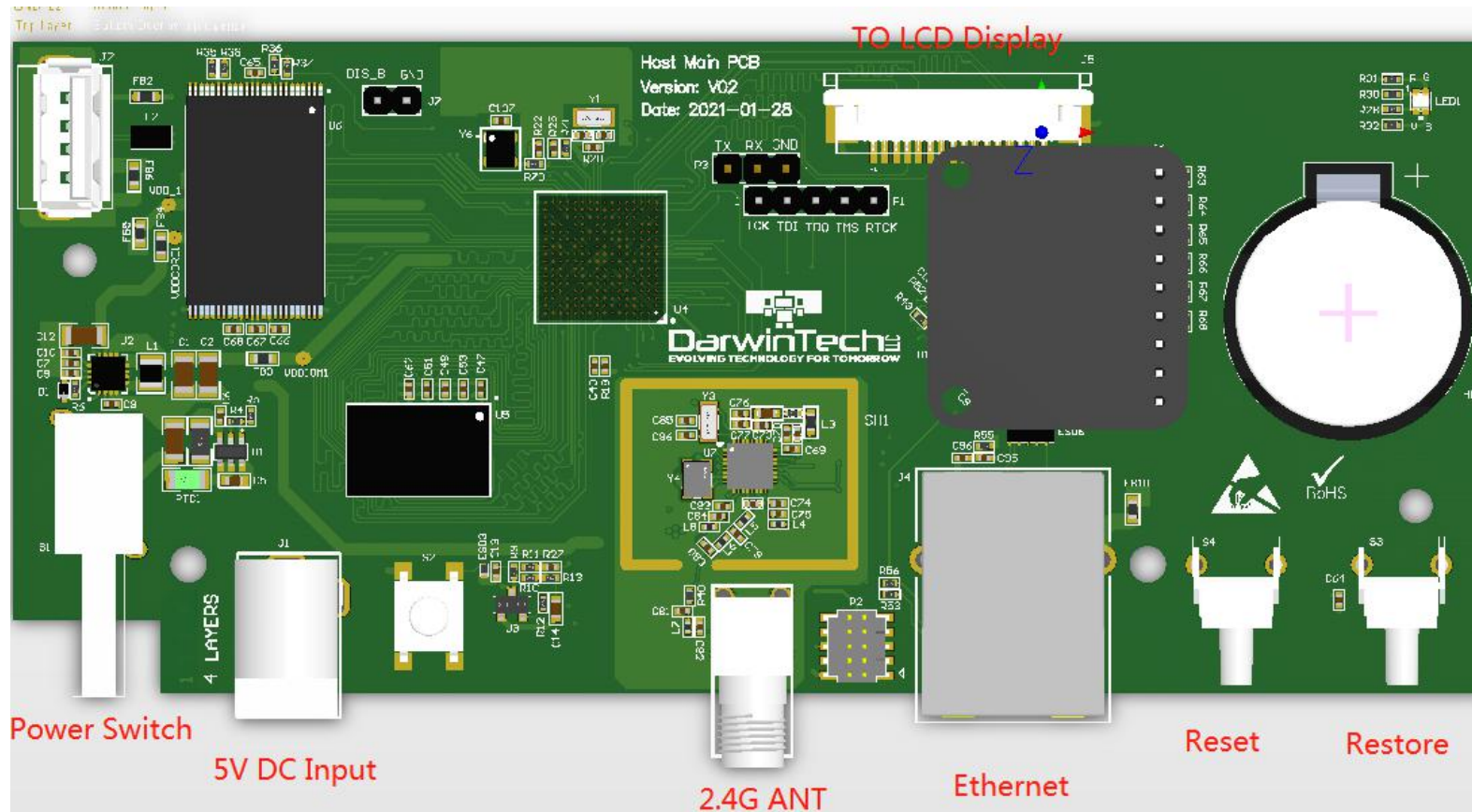
LCD Display: The Host contains a LCD display to show the Ethernet IP address when the unit plug the CAT5 cable to connect the Router and computer.We can easier to get the IP address of the unit.

DC Power Input: The Host contains a DC terminal block for supporting 5VDC/500mA.

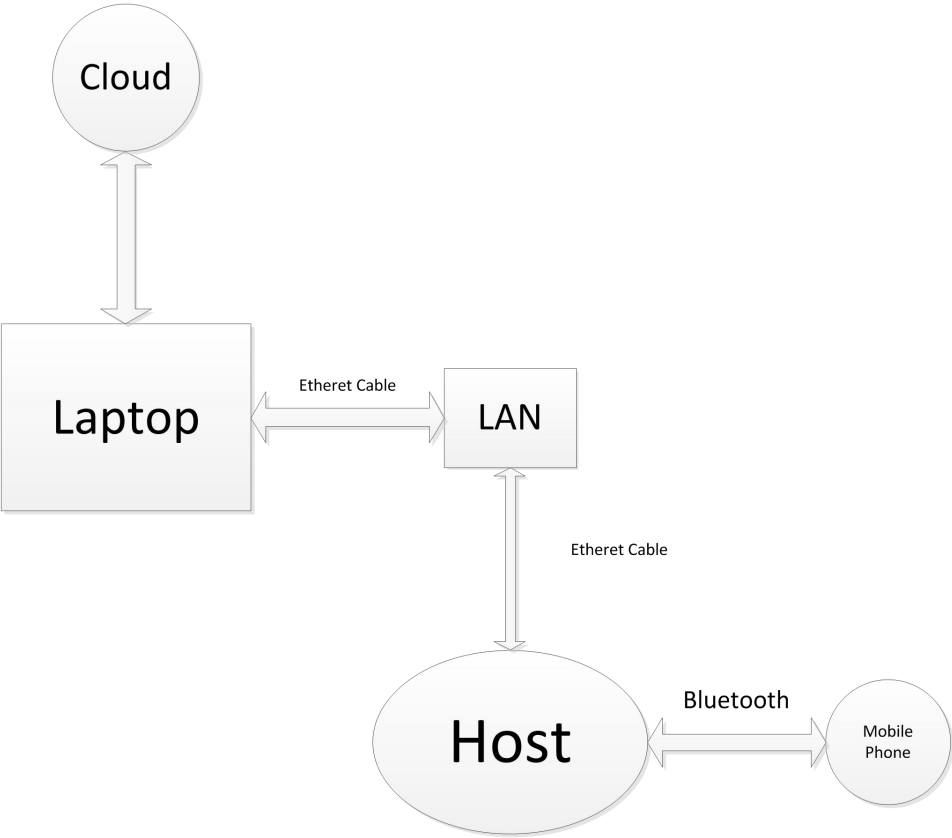
Power Switch: The Host contains a power switch for ON/OFF the power supply.



Circuit Board details



System Architecture



Specifications

Maximum Tx Power	RF 20dBm@2.402GHz-2.480GHz
RFSupported Modulation Format	GFSK
Ethernet	10/100 Mbps
Power Source	5V DC/500mA
LED Status Indicator	Alternate flashing RGB
Product ID	Unique factory-programmed ID
Construction	White ABS plastic
Dimensions (H x W x D)	47x79.9x160.3mm
Weight	205.2 grams
Power Source	5V DC/500mA
Interfaces	Ethernet: Female RJ-45 (8P8C) connector
Operating Environment	Temp: -10° C to 60° C (14° F to 159° F) Humidity: 20% to 80% non-condensing
Regulatory	FCC Compliant

Compatible Accessories

1. INTERNET SHIELD CABLE L=1800mm OD:6.1mm



2.SWITCHING ADP 100~240V 5VDC 0.5A XH-UL0505-A1+5V-0.5A



FCC Warning:

Any Changes or modifications not expressly approved by the party responsible for compliance could void the user's authority to operate the equipment.

This device complies with part 15 of the FCC Rules. Operation is subject to the following two conditions:

(1) This device may not cause harmful interference, and

(2) this device must accept any interference received, including interference that may cause undesired operation.

Note: This equipment has been tested and found to comply with the limits for a Class B digital device, pursuant to part 15 of the FCC Rules. These limits are designed to provide reasonable protection against harmful interference in a residential installation. This equipment generates uses and can radiate radio frequency energy and, if not installed and used in accordance with the instructions, may cause harmful interference to radio communications. However, there is no guarantee that interference will not occur in a particular installation. If this equipment does cause harmful interference to radio or television reception, which can be determined by turning the equipment off and on, the user is encouraged to try to correct the interference by one or more of the following measures:

- Reorient or relocate the receiving antenna.

- Increase the separation between the equipment and receiver.

- Connect the equipment into an outlet on a circuit different from that to which the receiver is connected.

- Consult the dealer or an experienced radio/TV technician for help.

This equipment complies with FCC radiation exposure limits set forth for an uncontrolled environment. This equipment should be installed and operated with minimum distance 20cm between the radiator & your body.