

Pivot 3-in-1 Wireless Charger Metal/Black - Verizon/ROC

Product Dimensions:

72.6mm W x 32mm H x 72.6mm D (closed)

Materials & Color:

Body Covers & Apple Watch Extension -
Recycled Aluminum - Space Gray Pantone 425C

Qi2 Pad / Cover -

TPE - Matte Black

Qi2 Upper Cover -

Recycled Plastic - Matte Black + Cool Gray 10C Speckles

Qi2 Bottom Cover -

Recycled Plastic - Metallic Black

Qi2 Hinge -

Recycled Plastic / Aluminum - Space Gray Pantone 425C

AirPods Upper Cover -

Recycled Plastic - Matte Black + Cool Gray 10C Speckles

Apple Watch Hinge & Housing -

Recycled Plastic - Space Gray Pantone 425C

Bottom Pads -

Recycled Silicone - Matte Black

Cert Pad Print

Print Area:

44mm W x 14mm H

Position:

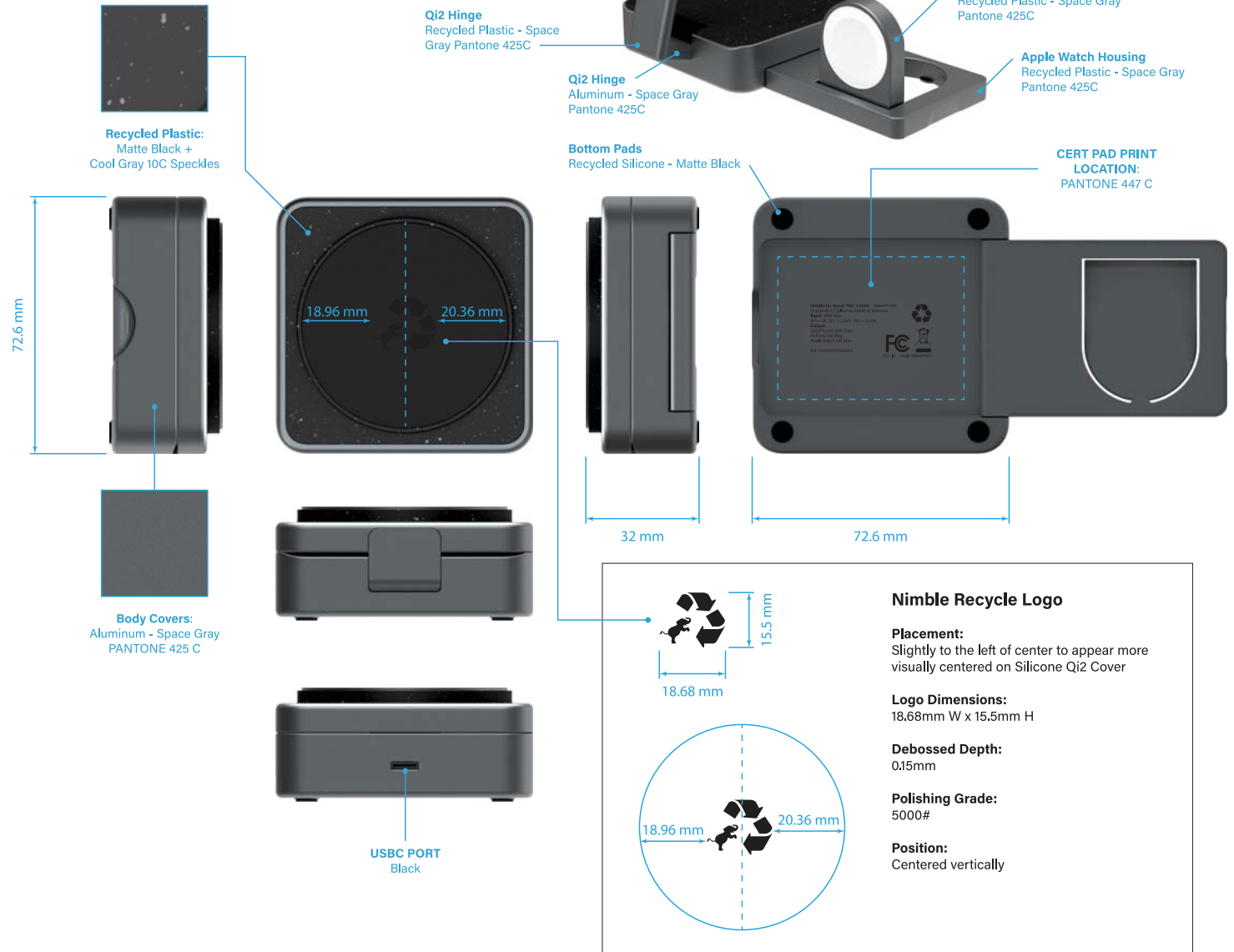
Centered vertically and horizontally inside Apple Watch charging cavity.

Color:

PANTONE 447 C

Font:

Acumin Pro
3.5pt Bold, Regular



Body Covers:
Aluminum - Space Gray
PANTONE 425 C

Qi2 Pad / Cover
TPE - Matte Black

AirPods Upper Cover
Recycled Plastic - Matte Black
+ Cool Gray 10C Speckles

Qi2 Hinge
Aluminum - Space Gray
Pantone 425C

Apple Watch Hinge
Recycled Plastic - Space Gray
Pantone 425C

Qi2 Hinge
Recycled Plastic - Space
Gray Pantone 425C

Apple Watch Housing
Recycled Plastic - Space Gray
Pantone 425C

Bottom Pads
Recycled Silicone - Matte Black

**CERT PAD PRINT
LOCATION:**
PANTONE 447 C

72.6 mm

18.96 mm 20.36 mm

32 mm

72.6 mm

18.68 mm 15.5 mm

18.96 mm 20.36 mm

USBC PORT
Black

Nimble Recycle Logo

Placement:
Slightly to the left of center to appear more
visually centered on Silicone Qi2 Cover

Logo Dimensions:
18.68mm W x 15.5mm H

Debossed Depth:
0.15mm

Polishing Grade:
5000#

Position:
Centered vertically