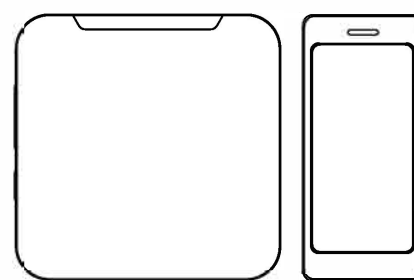


AKOYU

## Wireless Doorbell User Manual M5371+F22



### Safety

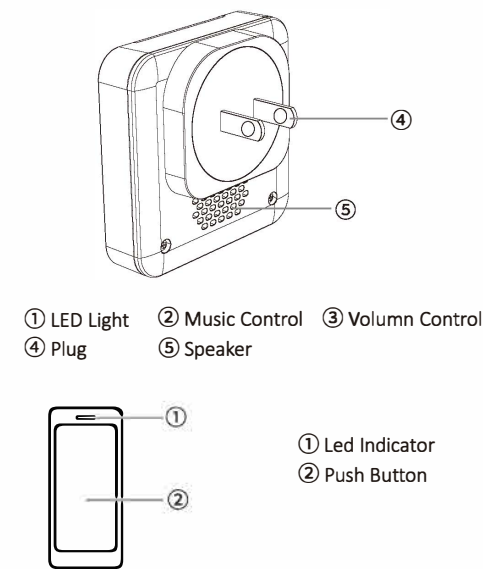
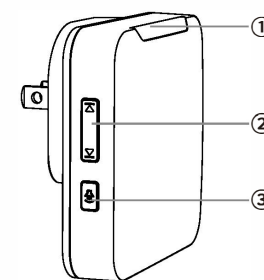
⚠ Before proceeding with the installation, please note the following safety warnings:  
Always follow the manufacturer's advice when using power tools and wear suitable protective equipment when drilling holes, etc.  
Before drilling holes in walls, check and hidden electricity cables and water pipes. The use of a cable/pipe locator is advisable if in doubt.

### What You Should Know Before Installation

- Test the operating range you desire. Choose an electric outlet at the height of 3.3 feet at least and plug in the receiver and take the button outside the door to test if it can work well within the range you have chosen.
- Set a desired music (different or same one) for transmitters before installation. Doorbells have been paired and set to a default chime (Ding Dong) before leaving factory.
- Please do not install transmitter on metal doors since it is hard for the signal to transmit.

- Please take out the battery insulating strip before using if have. (As picture ①)
- Ensure all surfaces are clean by wiping the installation area with a clean cloth. Please note that the sticker will have poor adhesion if you attach it to a dirty or uneven surface. Sunlight or rain will also affect the adhesion over a longer period of time.

### Product Structure Diagram

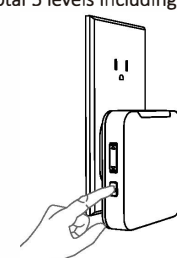


### Set up and Operation

Press the push button to test whether it is paired with the doorbell. The doorbell will light up and ring. If it does not, see "Connect a Push Button" on page 7.

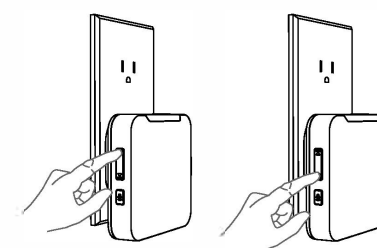
#### 1. Adjust the Volume

- Press the 【Φ】 to adjust the volume. (when the power is cut off, and power is restored again, the volume will be automatically adjusted to maximum)
- At the maximum and minimum volume, the doorbell will sound "didi" twice
- There are total 5 levels including the mute mode.



#### 2. Change the Tune

Press the 【Σ】 【Δ】 to loop tones.



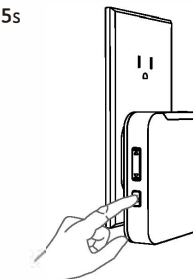
#### 3. Connect a Push Button

You can connect up to 20 accessories to your doorbell, including other push buttons, window door opening sensors, and motion sensors.

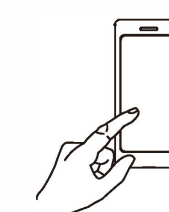
#### (1) VARIABLE- Tone Pairing

- Plug-in the receiver, pressing and holding the 【Φ】 on the receiver for 5s, the receiver will beep once, which means receiver get into pairing mode.

#### Long Press 【Φ】 5s



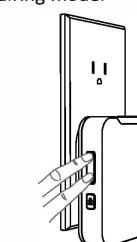
- Press push button, the receiver will beep twice with LED indicator flashes 1s.



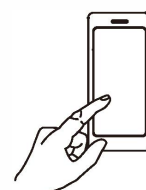
- Press push button again, the receiver will beep once with LED indicator flashes 1s, which means the pairing is successful.
  - Short press 【Φ】 or leave it 20s without any operation, the doorbell will exit the pairing mode.
- Notice: Adding the additional push buttons or receivers please according to the above steps.

#### (2) Fixed- Tone Pairing (Only play your saved tone)

- Select a tone that you like
- Pressing and holding 【▽】 & 【△】 button together for about 5s until the receiver beeps once, which means receiver get into pairing mode.



- Press push button once, the receiver will beep twice with LED indicator flashes 1s.



- Press push button once again, the receiver will beep once with LED indicator flashes 1s, which means the pairing is successful.



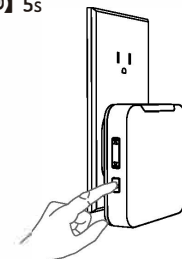
- Short press 【Φ】 or leave it 20s without any operation, the doorbell will exit the pairing mode.

Notice: Pair and set only one transmitter at a time to avoid interference and ensure successful operation.

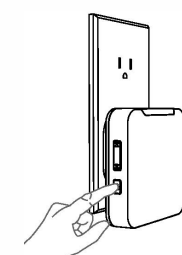
#### 4. Delete a Push Button

Plug-in the receiver, pressing and holding the 【Φ】 on the receiver for 5s, the receiver will beep once, which means receiver get into pairing mode.

Long Press 【Φ】 5s

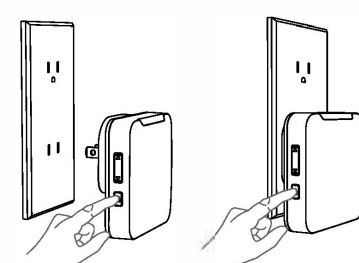


- Pressing and holding the 【Φ】 AGAIN for 5s, the receiver will beep 4 times, LED flashes 4 times, which means all push button deleted.



#### 5. Reset (Clearing out Settings)

To return all settings to their default settings. Hold down 【Φ】 and plug it into an outlet. After playing the beep 9 times slowly and beep 6 times fast, all settings will return to factory defaults.



### Installation

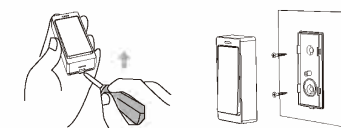
Choose a location that is not near a heat source or on something that moves (like a door). For non-mounting locations, choose a place where the doorbell will be easy to see and hear.

1. For Receiver:  
Plug-in receiver: Just plug receiver into standard outlet in room.

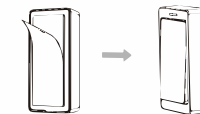
2. For Push button: IMPORTANT:  
• Before installation, please test if the operating range you choose is working and set music if needed.

- Before you drill any hole in the wall, please make sure there are not cables or pipes.
- To install you will require a drill and cross-head screwdriver.

A. Open the Transmitter with screw driver and separate the front cover from the back cover. Penetrate the two standby holes at the back cover with two screws. Then fix the screws on the wall at suitable height.



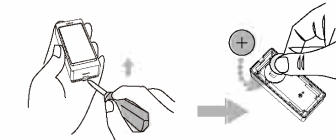
B. Or you can stick the Transmitter with the double-sided adhesive tape.



C. If you are not mounting the push button to the wall, place it where you want it.

### Battery Replacement of Push Button

Open the battery cover and install the CR2032 battery



### Specifications

	Doorbell	Push Button
Push Button Temperature	-4°F to 140°F	-4°F to 140°F
Radio Frequency	433.92 MHz	433.92 MHz
Range (open field)	1,000 ft	1,000 ft
Sound Level (typical)	0-120 dB	-
Battery Type	Plug in	CR2032
Battery Life (5 activations/day)	Upto 5 years	Upto 3 years
Rain Proof	N/A	IP55

### Trouble shootings

If	Then
The doorbell does not work	<ol style="list-style-type: none"> <li>1. The doorbell might be out of range; try the doorbell in a different location.</li> <li>2. Reconnect the doorbell. See "Connect a Push Button" on page 5.</li> <li>3. Check all the batteries and replace if needed.</li> <li>4. Check if the LED on the transmitters is working when activated.</li> <li>5. Check if the doorbell is muted. Check that the transmitter is linked with the chime.</li> </ol>
Range is reduced	<ol style="list-style-type: none"> <li>1. Metal structures including uPVC door frames can reduce the range. Don't mount the doorbell or doorbell push on or near metal structures.</li> <li>2. Move the doorbell closer to the doorbell push button. Weak batteries will reduce range. In cold conditions (below 5°C), batteries may need to be replaced more often.</li> </ol>

### 1 Year Limited Warranty

This product is warranted to the original purchaser only for a period of 1 year from the date of purchase for products damaged due to defect in workmanship and materials. Proof of purchase is required to obtain warranty service. Warranty is for replacement only. No service parts are available for these products. No other warranties are expressed or implied. Batteries are not covered under this warranty.

For warranty and after sales service, please contact AKOYU Customer Service by email: akoyuteam@163.com

单页尺寸:70\*90mm  
展开尺寸:560\*90mm  
材质:128g铜版纸  
颜色单色  
折风琴折页

## **FCC Statement**

This equipment has been tested and found to comply with the limits for a Class B digital device, pursuant to part 15 of the FCC rules. These limits are designed to provide reasonable protection against harmful interference in a residential installation. This equipment generates, uses and can radiate radio frequency energy and, if not installed and used in accordance with the instructions, may cause harmful interference to radio communications. However, there is no guarantee that interference will not occur in a particular installation. If this equipment does cause harmful interference to radio or television reception, which can be determined by turning the equipment off and on, the user is encouraged to try to correct the interference by one or more of the following measures:

- Reorient or relocate the receiving antenna.
- Increase the separation between the equipment and receiver.
- Connect the equipment into an outlet on a circuit different from that to which the receiver is connected.
- Consult the dealer or an experienced radio/TV technician for help.

To assure continued compliance, any changes or modifications not expressly approved by the party.

Responsible for compliance could void the user's authority to operate this equipment. (Example- use only shielded interface cables when connecting to computer or peripheral devices).

This equipment complies with Part 15 of the FCC Rules. Operation is subject to the following two conditions:

- (1) This device may not cause harmful interference, and
- (2) This device must accept any interference received, including interference that may cause undesired operation.

## **FCC Radiation Exposure Statement:**

The equipment complies with FCC Radiation exposure limits set forth for uncontrolled environment. This equipment should be installed and operated with minimum distance 20cm between the radiator and your body.