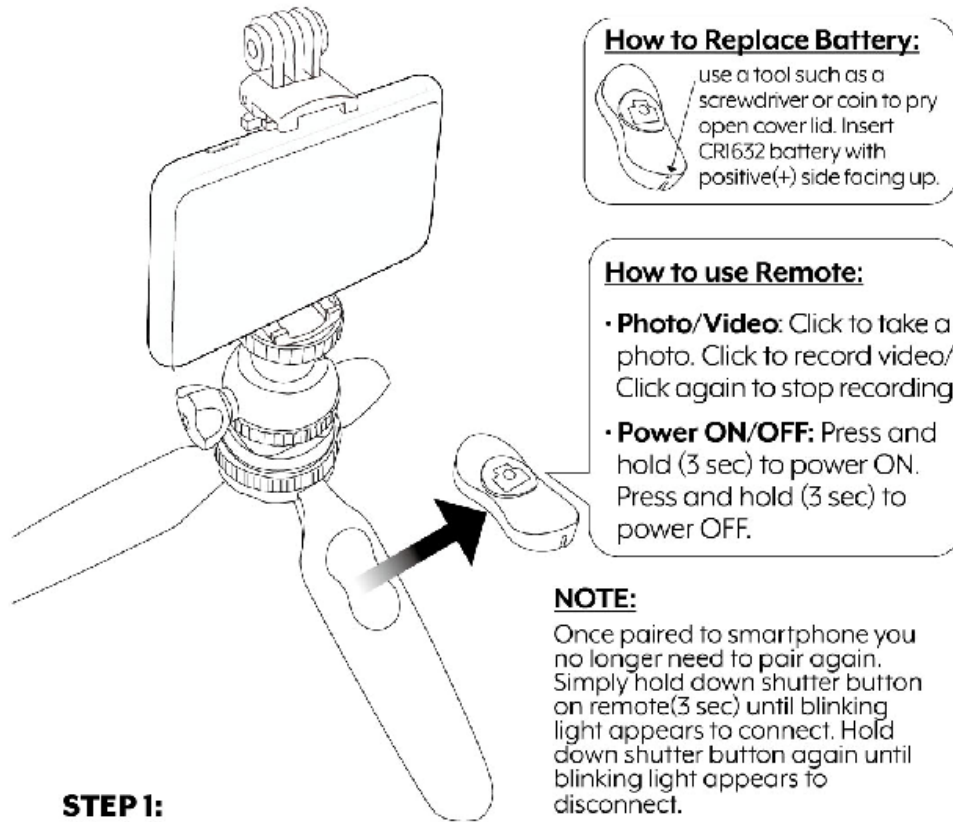


HOW TO USE (Table Tripod/Wireless Remote Shutter)



How to Replace Battery:

use a tool such as a screwdriver or coin to pry open cover lid. Insert CRI632 battery with positive(+) side facing up.

How to use Remote:

- **Photo/Video:** Click to take a photo. Click to record video/ Click again to stop recording
- **Power ON/OFF:** Press and hold (3 sec) to power ON. Press and hold (3 sec) to power OFF.

NOTE:

Once paired to smartphone you no longer need to pair again. Simply hold down shutter button on remote(3 sec) until blinking light appears to connect. Hold down shutter button again until blinking light appears to disconnect.

STEP 1:

Remove the Wireless Remote Shutter by pushing out from the back-side of the leg. Connect via Bluetooth® on your phone's settings.

Pairing the Wireless Remote Shutter to your phone:

- Go to your phones settings and turn Bluetooth® on
- Press and hold the remote button(3 seconds) until a blinking Blue light appears
- The blinking Blue light indicates it is pairing with your smartphone
- On your phone you will see "Bower" name, select it to pair

Warning: Changes or modifications to this unit not expressly approved by the party responsible for compliance could void the user's authority to operate the equipment.

NOTE: This device complies with part 15 of the FCC Rules. Operation is subject to the following two conditions: (1) This device may not cause harmful interference, and (2) this device must accept any interference received, including interference that may cause undesired operation.

FCC Statement: This equipment has been tested and found to comply with the limits for a Class B digital device, pursuant to part 15 of the FCC Rules. These limits are designed to provide reasonable protection against harmful interference in a residential installation. This equipment generates, uses and can radiate radio frequency energy and, if not installed and used in accordance with the instructions, may cause harmful interference to radio communications. However, there is no guarantee that interference will not occur in a particular installation. If this equipment does cause harmful interference to radio or television reception, which can be determined by turning the equipment off and on, the user is encouraged to try to correct the interference by one or more of the following measures:

- Reorient or relocate the receiving antenna.
- Increase the separation between the equipment and receiver.
- Connect the equipment into an outlet on a circuit different from that to which the receiver is connected.
- Consult the dealer or an experienced radio/TV technician for help.