

---

## SPECIFICATION FOR APPROVAL

Customer: Zhejiang Joytech Electronics Co.,Ltd

Customer's part number: 0100203006

Product description: 433.92MHz Rubber Duck Antenna

Uni Link's part number: P00RD000433L

Issue Date: 2022/11/02

Note: 433.92MHz, RA SMA male

Customer Use		Customer's authorized signature	Remarks
Full approved			
Conditional approved			
Rejected			

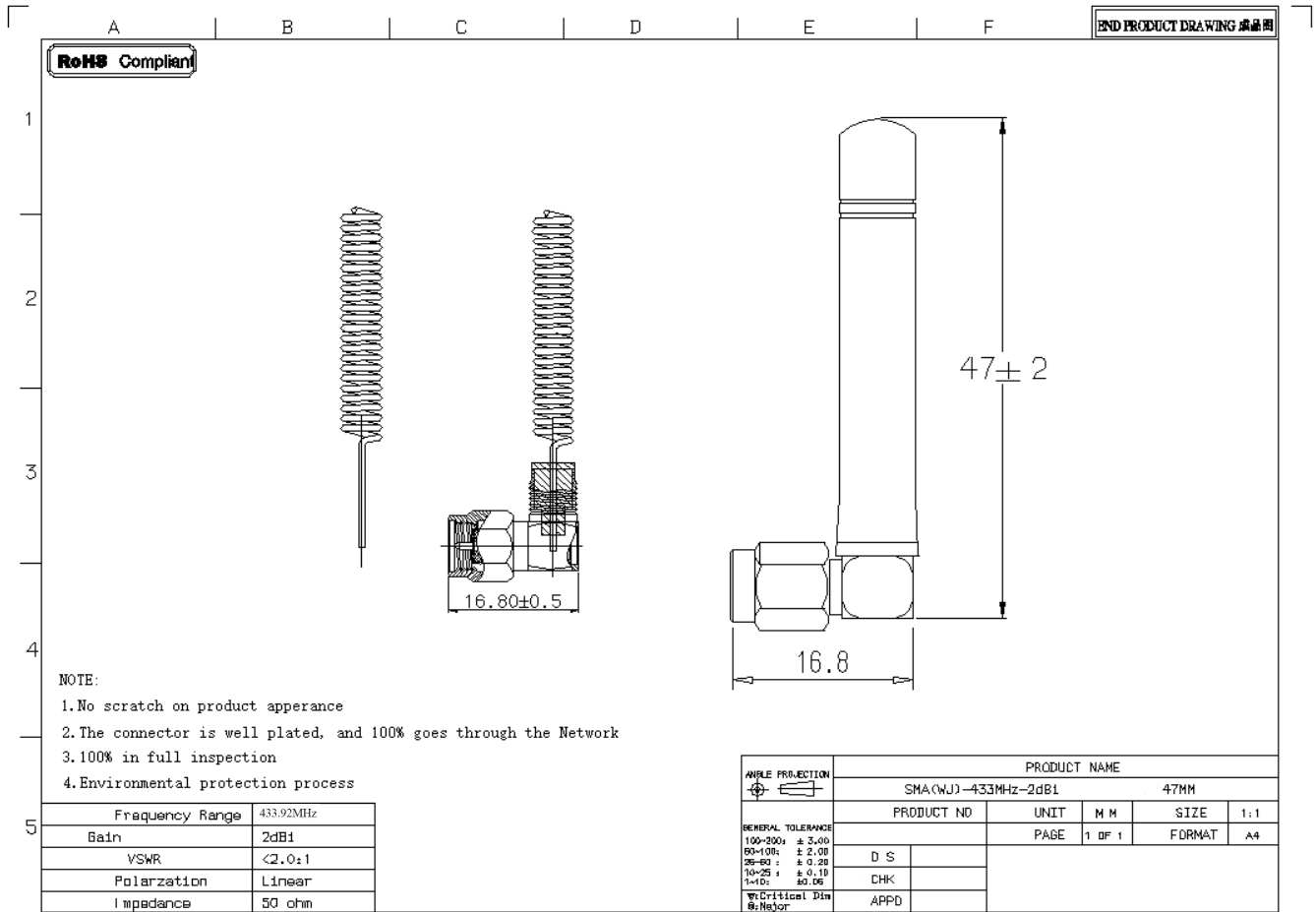
- 
- 一、 (Parameters)
  - 二、 (Specifications)
  - 三、 (Electrical Characteristic)
  - 四、 (Mechanical Characteristic)
  - 五、 (Durability)

---

## 一、Parameters

MODEL	<u>POORD000433L</u>
Main Technical Specifications	
Frequency Range (MHz)	433
Bandwidth (MHz)	10
VSWR	$\leq 2.5$
Gain (dBi)	0
Max Input power (W)	5
Input Impedance ( $\Omega$ )	50
Polarization Type	Vertical
Antenna Size (mm)	47*16.8
Line Length (mm)	
Connector Type	RA SMA male

## 二、 Specifications



---

### 三、 Electrical Characteristic

	ITEM	TEST CONDITION	SPECIFICATION
1	VSWR	Using PROTEK A333 networking analyzer to measure Antenna S1 VSWR characteristics	PIC 1
2	Smith Chart	Using PROTEK A333 networking analyzer to measure Antenna S1 Smith Chart characteristics	PIC 2
3	Gain Response	Using PROTEK A333 networking analyzer to measure Antenna S1 Gain Response characteristics	

---

#### 四、 MECHANICAL CHARACTERISTICS

1	BENDING TEST	Put load 120g at the end of the wire, fixed joints, swaying test at an angle of 60 degrees , test features after 1000 times	No sign of damage
2	STRENG TEST	15 pounds of static load applied to the bottom of the actinomycetes end for one minute.	No sign of damage
3	PULLING FORCE	Pull test with a tension meter between connector and wire	No sign of damage
4	VIBRATION TEST	the X-axis direction for 120 minutes, and the Y-axis direction 120 minutes, the Z-axis direction 240 minutes as vibration testing of 1.1mm amplitude and 33.30Hz/sec of frequency	No sign of damage

## 五、 DURABILITY

1	SAIT SPRAY TEST	<p>Standard: GB1266-86          Distilled Water:          PH6.5~7.2          Spray Volume: 1.0-2.0mL/80cm<sup>2</sup> /h          Compressed Air Pressure: 1Kgf/ cm<sup>2</sup>          Test relativity: 98°          Temperature: 34° ~36°          Pressure: 46° ~48°          Time: 24hr</p>	All characteristic range is 30% of the initial value
2	HEAT TEST	75 +/- 3 °C for 1 hour, after keep in normal condition for 60mins,then test.	
3	HUMIDITY TEST	40+2°C 90-95%RH for 21hours, after keep in normal condition for 60mins, then test.	
4	COLD TEST	-40+2°C for 1hour, after keep in normal condition for 60mins, then test.	