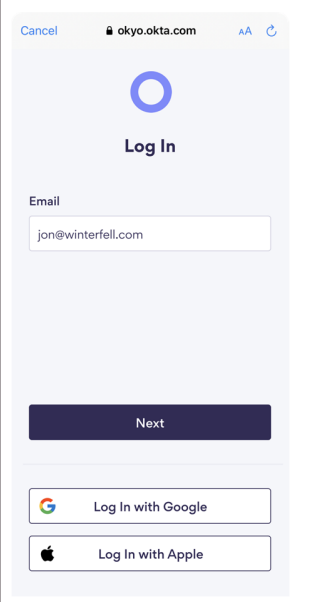
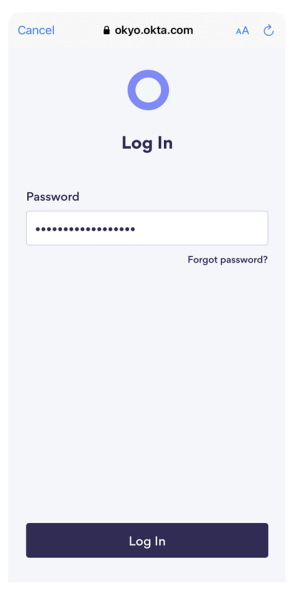


# Asterix Installation Guide

Asterix will guide the user through installation through an interactive setup flow in the app. This document outlines how the app guides the user through the following steps:





1. Log in
2. Router setup
3. Mesh node setup
4. Software update
5. Create SSID & password

## 1. Log in





	

## 2. Router setup

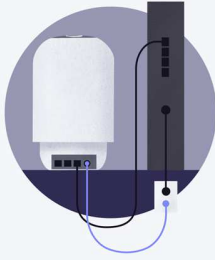


### Scan QR code

<div><div>6:32</div><div>←</div><div><b>Let's get you the security you deserve</b><p>We'll walk you through activating your Okyo Garde service, ensuring safer smarter security. This should take about 5 minutes.</p></div><div><div>Start Set Up</div></div></div>	<div><div>6:32</div><div>←</div><div><b>You have more than one device, so choose one</b><p>Your current subscription comes with two devices. Choose any one and we'll start by setting that up as your new Okyo router. Then, we'll walk you through installing the other as your mesh node.</p></div><div><div>Next</div></div></div>	<div><div>6:32</div><div>←</div><div><b>First, scan the QR code to register your Okyo router</b><p>Turn the device over to scan the QR code located on the bottom.</p></div><div><div>Scan</div><div>Prefer to enter it manually?</div></div></div>	<div><div>6:32</div><div>←</div><div><b>First, scan the QR code to register your mesh node</b><p>Turn the device over to scan the QR code located on the bottom.</p></div><div><div>Prefer to enter it manually?</div></div></div>

### Connect router to Internet

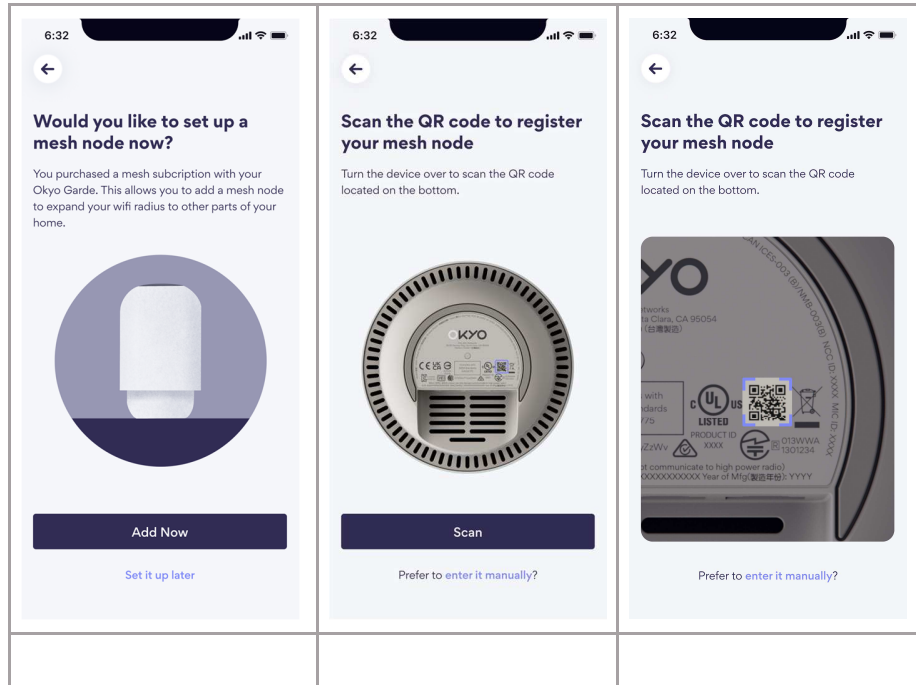
<div><div>6:32</div><div>←</div><div><b>Tell us about your current network setup</b><p>This will help us determine how to best set up your Okyo Router.</p><div><b>Modem/Router (All-in-one)</b><p>Your network broadcasting device is provided by your internet service provider.</p></div></div><div><div>Next</div></div></div>	<div><div>6:32</div><div>←</div><div><b>Tell us about your current network setup</b><p>This will help us determine how to best set up your Okyo Router.</p><div><b>Modem + Router (2 Devices)</b><p>Your network is broadcast through a router you purchased that is connected to the modem provided by your ISP.</p></div></div><div><div>Next</div></div></div>	<div><div>6:32</div><div>←</div><div><b>Unplug your current router</b><p>You'll want to disconnect your router before you get started with Okyo Garde.</p></div><div><div>Next</div></div></div>	<div><div>6:32</div><div>←</div><div><b>Connect your Okyo router to your modem</b><p>If you're replacing an existing router, unplug the old one first. Then use the Ethernet cable provided to connect the two devices. Any port on your Okyo router will work.</p></div><div><div>Next</div></div></div>

Connect router to power

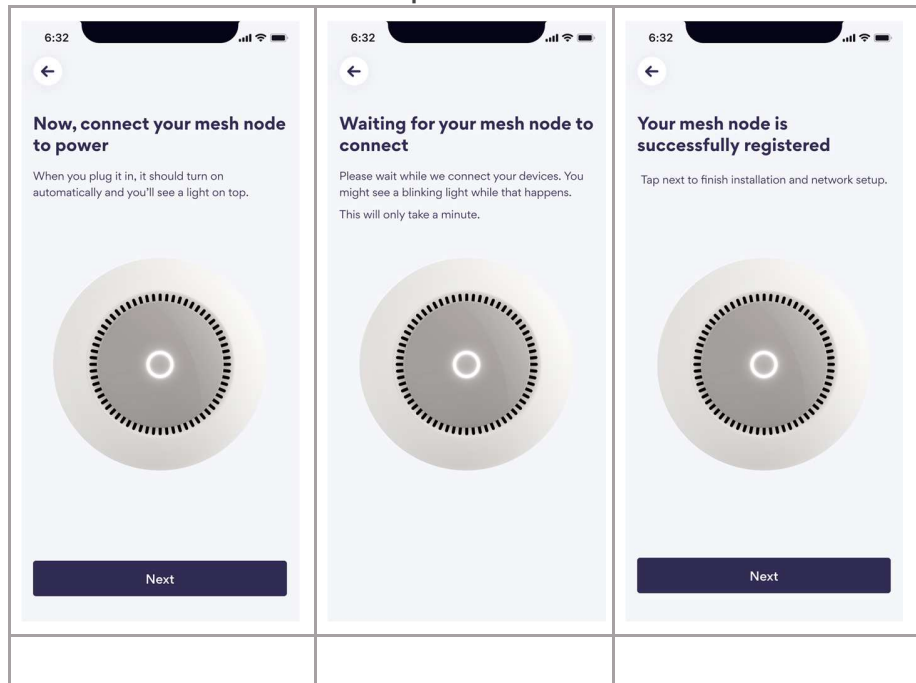
<div><div>6:32</div><div></div><div><b>Next, connect your Okyo router to power</b><p>When you plug in your router it should turn on automatically and you'll see a light on top.</p></div><div>Next</div></div>	<div><div>6:32</div><div></div><div><b>Waiting for your router to connect</b><p>Please wait while we power on your router. You might see a blinking light while that happens. This will only take a minute.</p></div></div>	<div><div>6:32</div><div></div><div><b>Your Okyo router is successfully registered</b><p>Now, let's get your network set up and your devices connected.</p></div><div>Next</div></div>

### 3. Mesh node setup

#### Scan QR code



#### Connect mesh node to power



## 4. Software update



5. Create SSID & password

<div><div>6:32</div><div><div>←</div></div><div>Create your network</div><div><div>This will be the name and password you use to connect devices to your WiFi.</div></div><div><div>Network Name (SSID)</div><div>HelloWorldYouAreBeautifulYetDifficu</div><div>5</div></div><div><div>Password</div><div>*****</div><div>3</div></div><div><div>Replacing your old network?</div><div>Using your current network name and password will automatically keep your devices connected.</div></div><div>Next</div></div>	<div><div>6:32</div><div><div>←</div></div><div><div></div></div><div>Creating your network</div><div>We're getting your network online.</div><div>Securing your network</div><div>Discovering your devices</div><div></div></div>	<div><div>6:32</div><div><div>←</div></div><div><div></div></div><div>Creating your network</div><div>Securing your network</div><div>Discovering your devices</div><div></div></div>	<div><div>6:32</div><div><div>←</div></div><div><div></div></div><div>Creating your network</div><div>Securing your network</div><div>Discovering your devices</div><div></div></div>	<div><div>6:32</div><div><div>←</div></div><div>Your network is now <b>fast</b> and <b>secure</b>.</div><div><div>📶 HelloWorld</div><div>1 Router / 2 Mesh Nodes</div></div><div><div>234</div><div>68</div><div>↓ Download</div><div>↑ Upload</div></div><div><div>14</div><div>Connected devices were found and are now secured</div></div><div>Next</div></div>