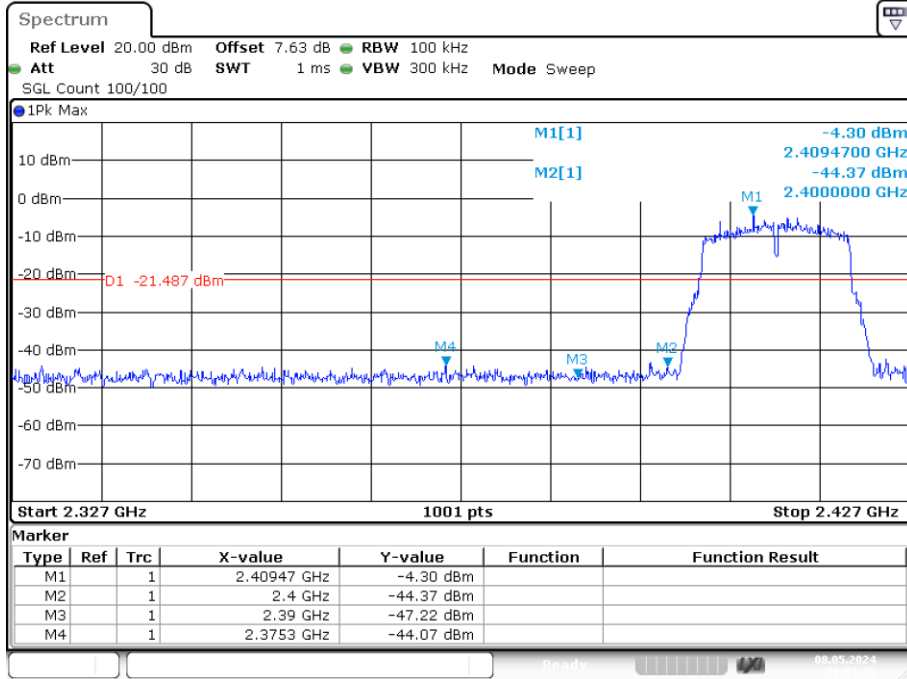
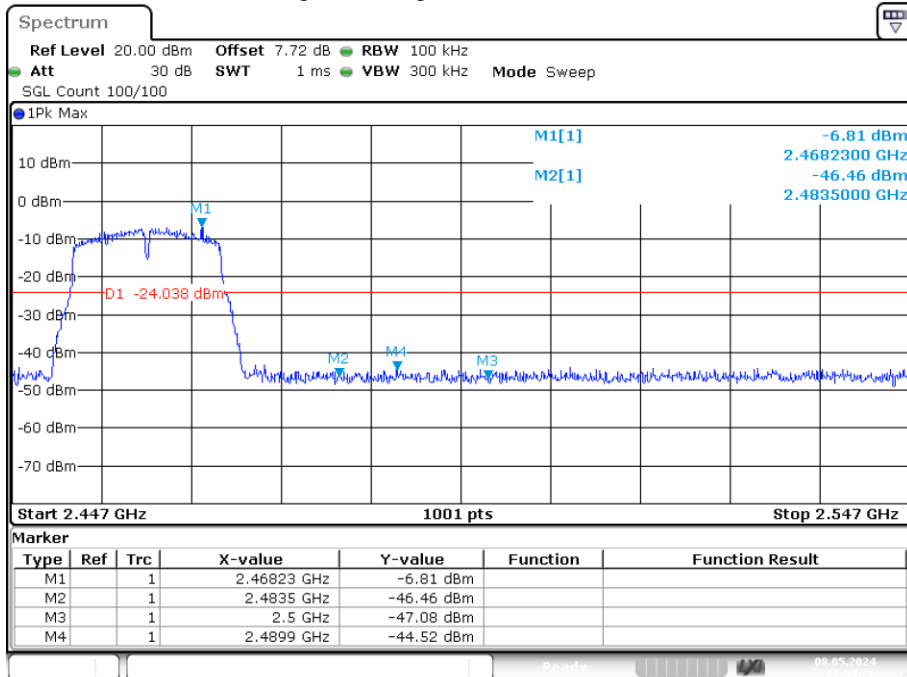


Band Edge NVNT g 2412MHz Ant1 Emission



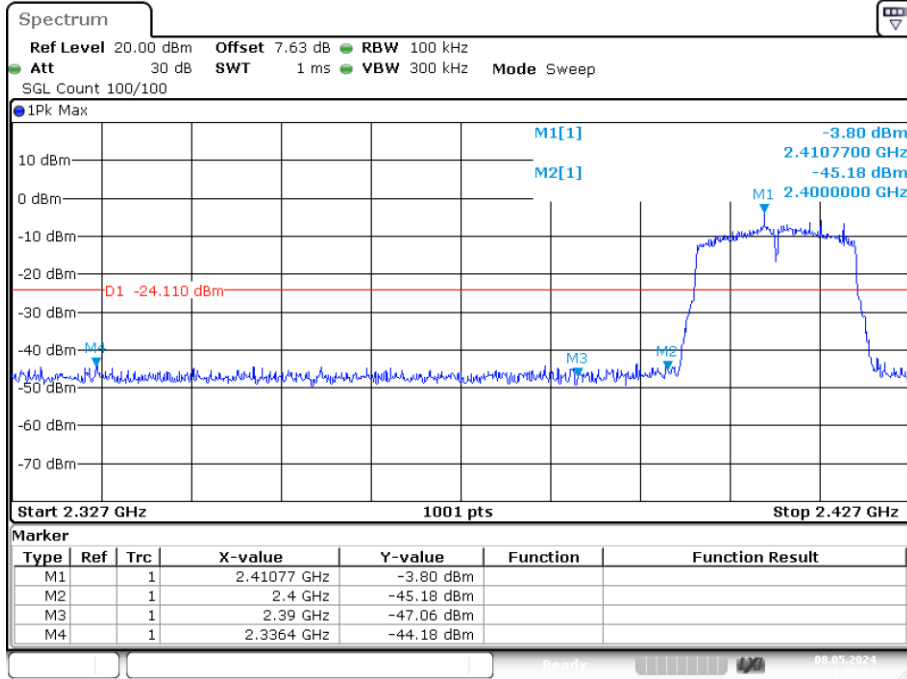
Date: 8.MAY.2024 21:51:45

Band Edge NVNT g 2462MHz Ant1 Emission



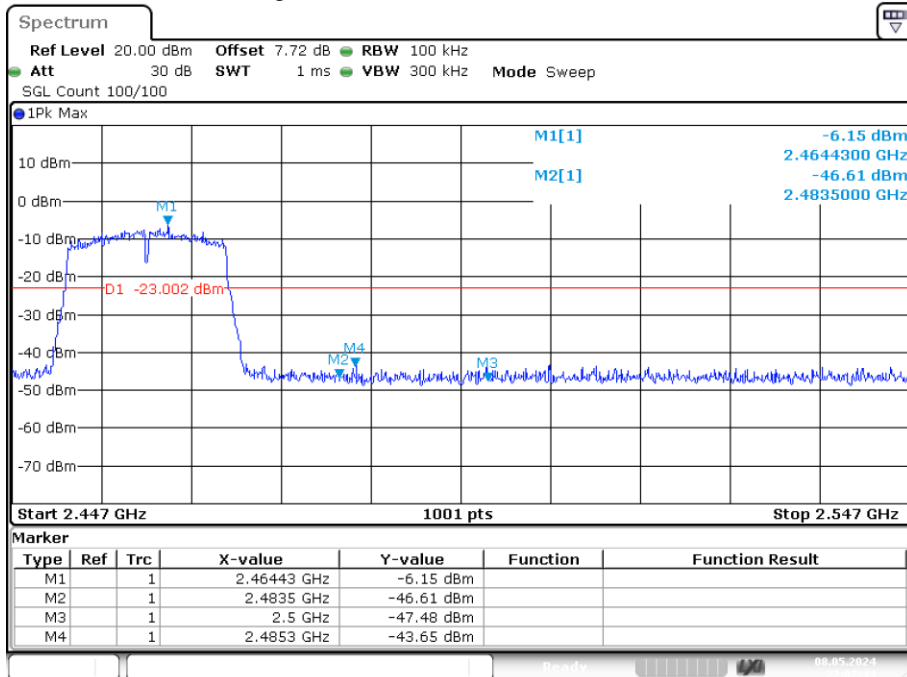
Date: 8.MAY.2024 21:57:28

Band Edge NVNT n20 2412MHz MIMO Emission



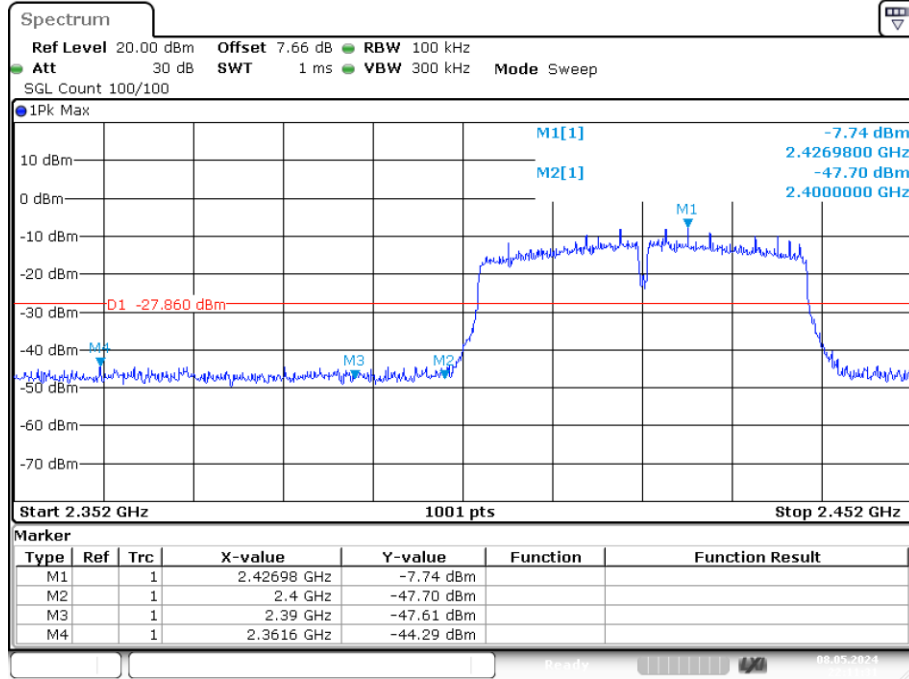
Date: 8.MAY.2024 21:59:53

Band Edge NVNT n20 2462MHz MIMO Emission



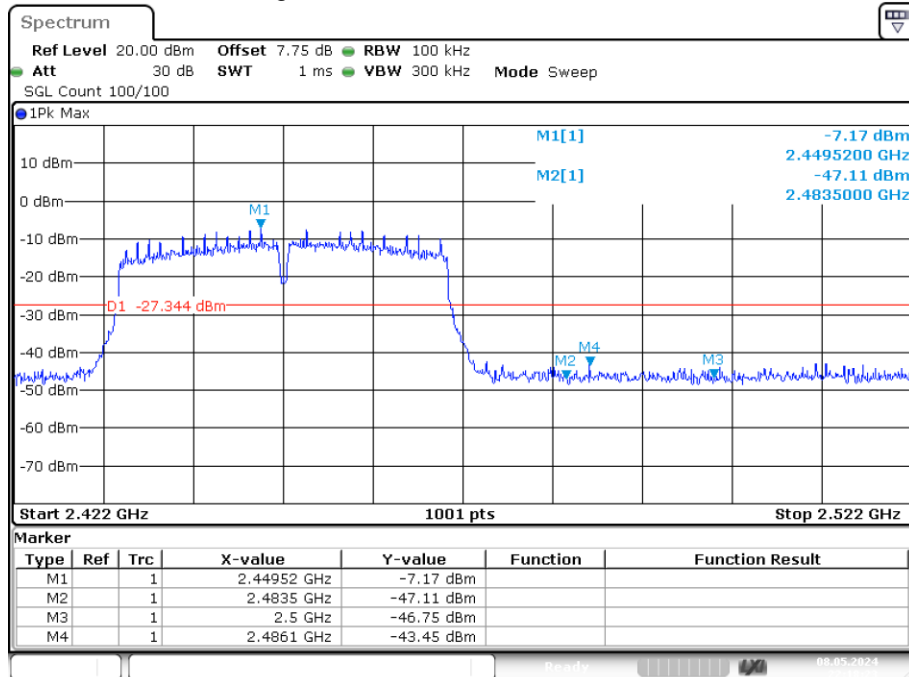
Date: 8.MAY.2024 22:07:44

Band Edge NVNT n40 2422MHz MIMO Emission



Date: 8.MAY.2024 22:11:30

Band Edge NVNT n40 2452MHz MIMO Emission



Date: 8.MAY.2024 22:18:23

- Note: 1. Except for mode b/g, other modes test the MIMO status.
- 2. All antennas have been tested, only the worst data of each pattern is reflected.

9. ANTENNA REQUIREMENT

9.1. Standard Requirement

An intentional radiator shall be designed to ensure that no antenna other than that furnished by the responsible party shall be used with the device. The use of a permanently attached antenna or of an antenna that uses a unique coupling to the intentional radiator shall be considered sufficient to comply with the provisions of this Section. The manufacturer may design the unit so that a broken antenna can be replaced by the user, but the use of a standard antenna jack or electrical connector is prohibited.

9.2. Antenna Connected Construction

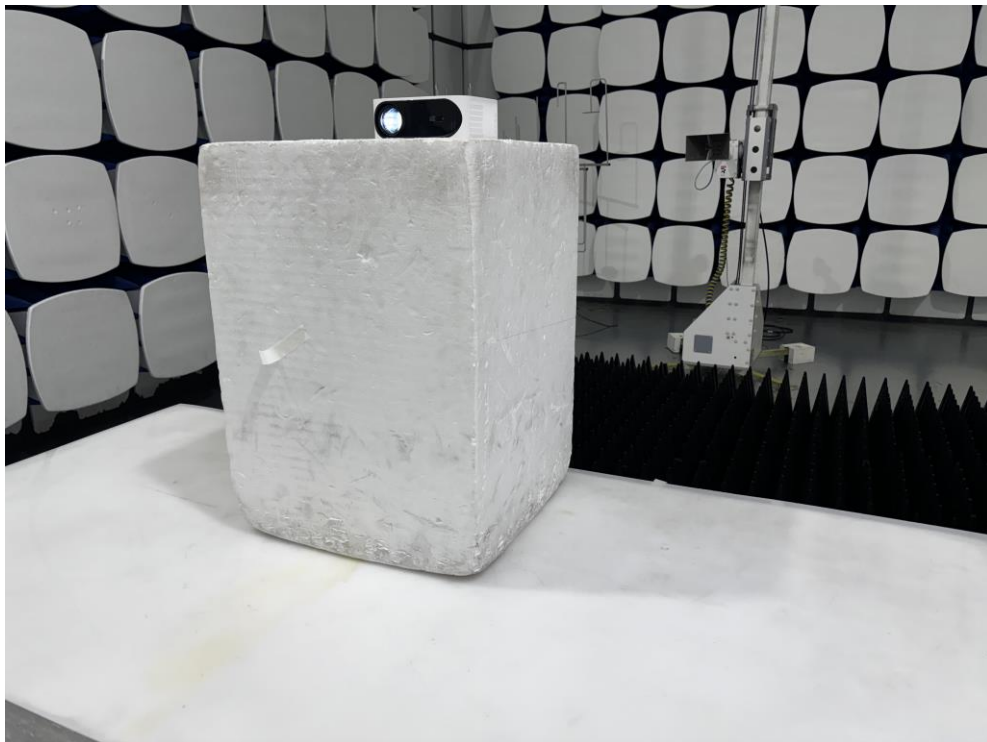
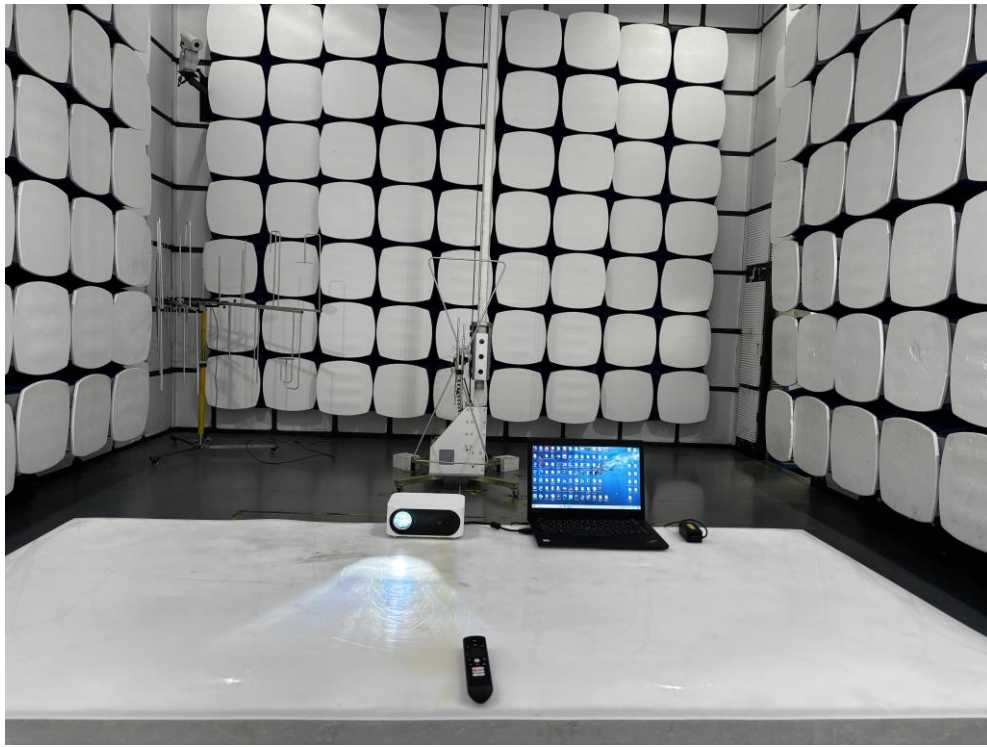
The antenna connector is unique antenna and no consideration of replacement. Please see EUT photo for details.

9.3. Results

The EUT antenna is internal Antenna. It complies with the standard requirement.

10. TEST SETUP PHOTO

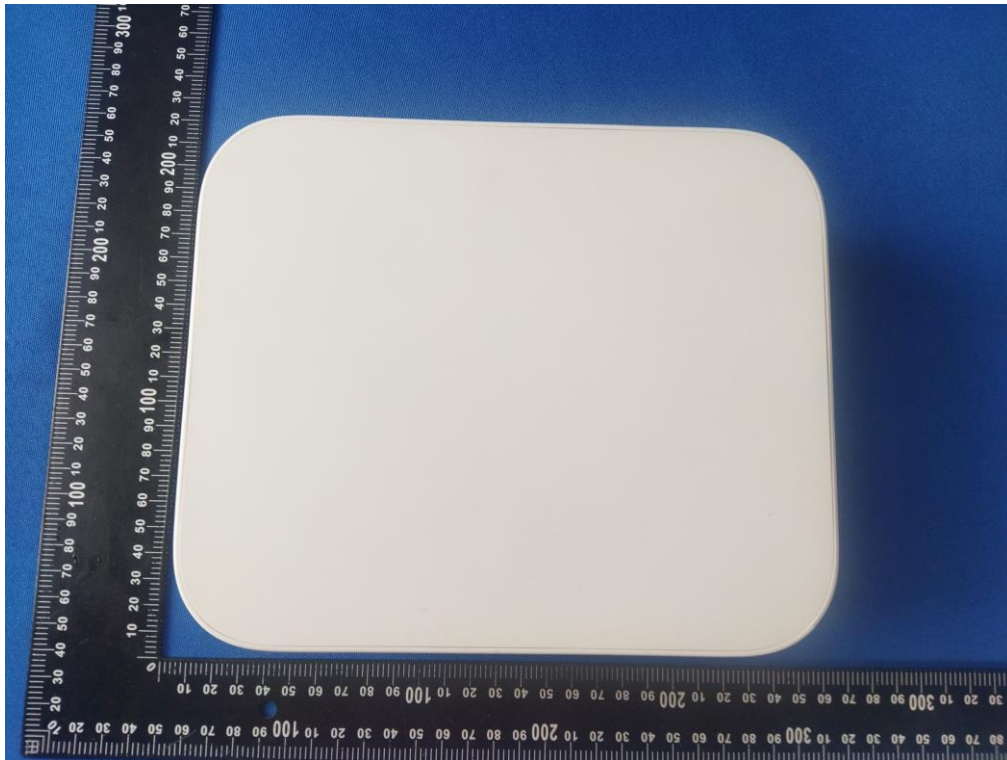
10.1. Photo of Radiated Emission test

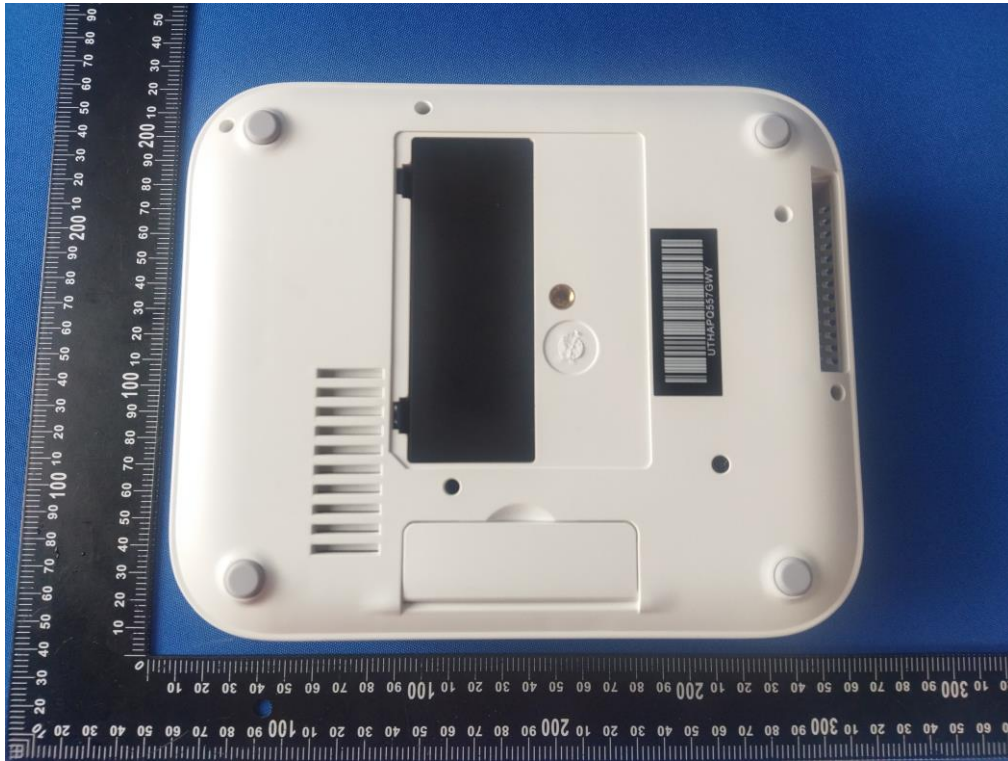


10.2.Photo of Conducted Emission test



11.EUT PHOTO

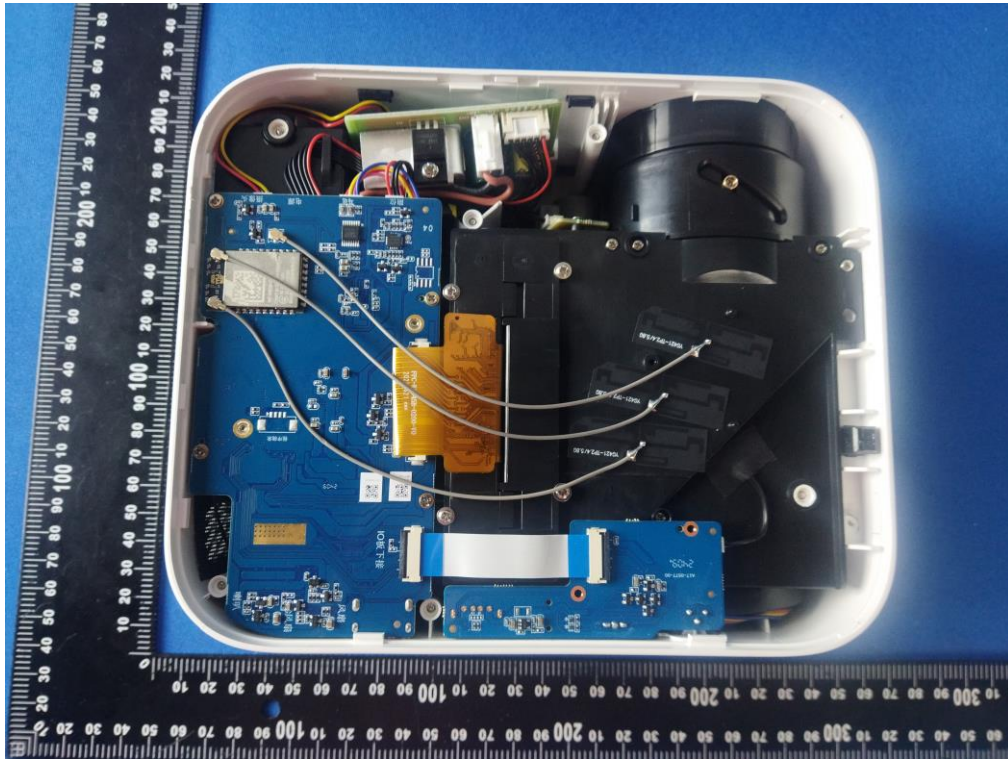
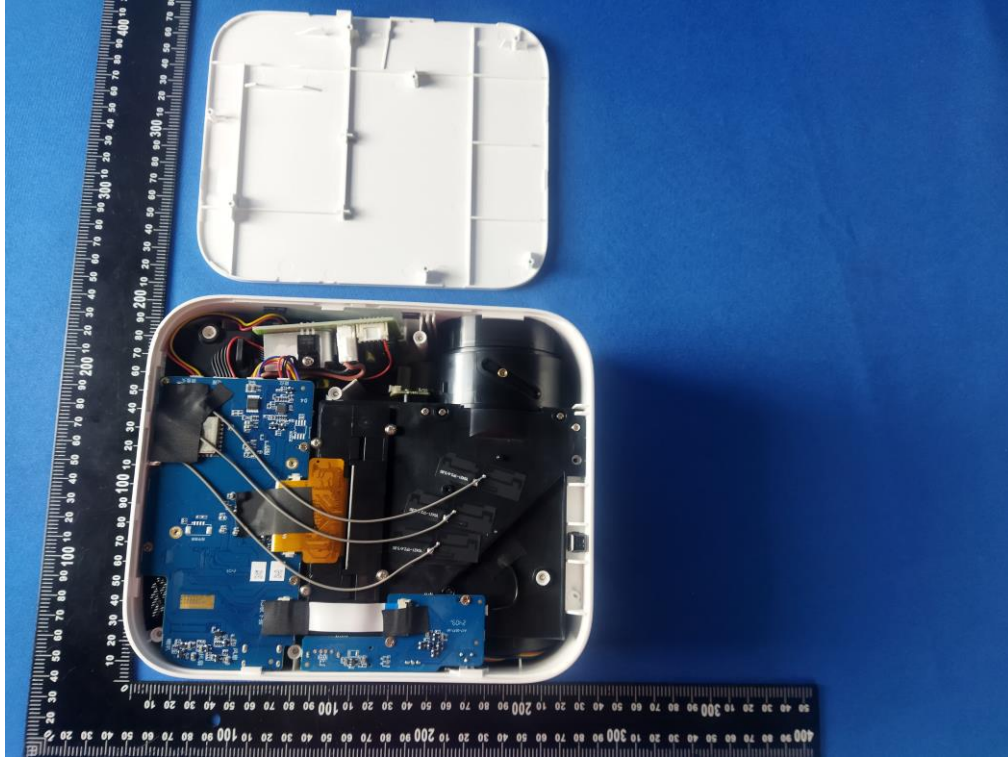


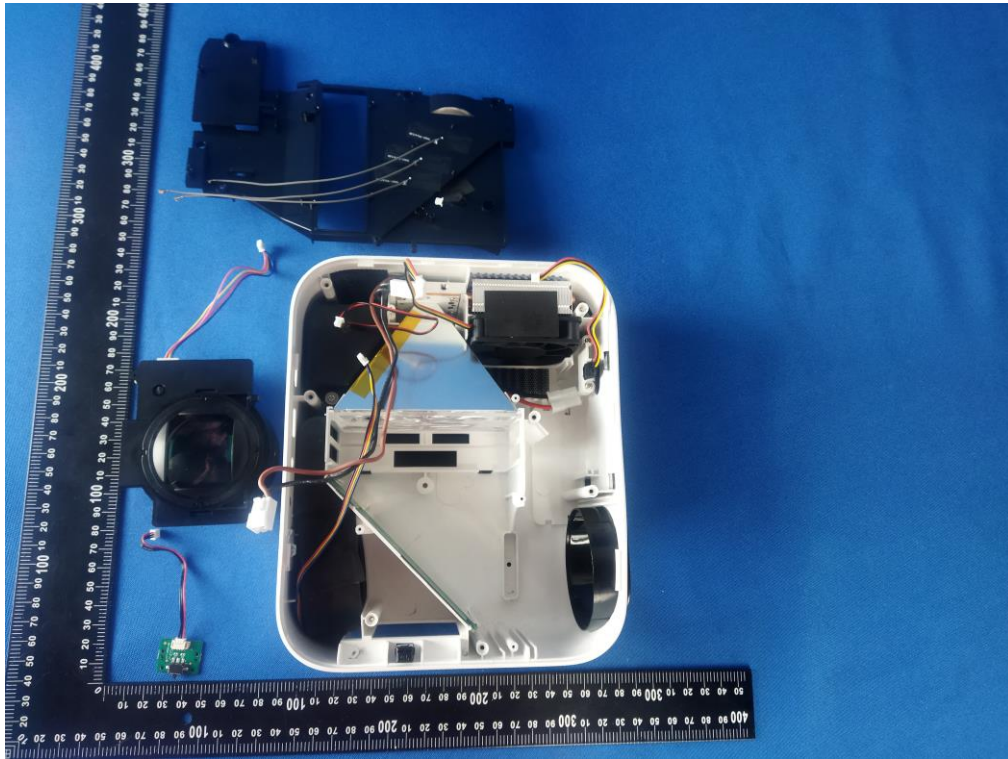
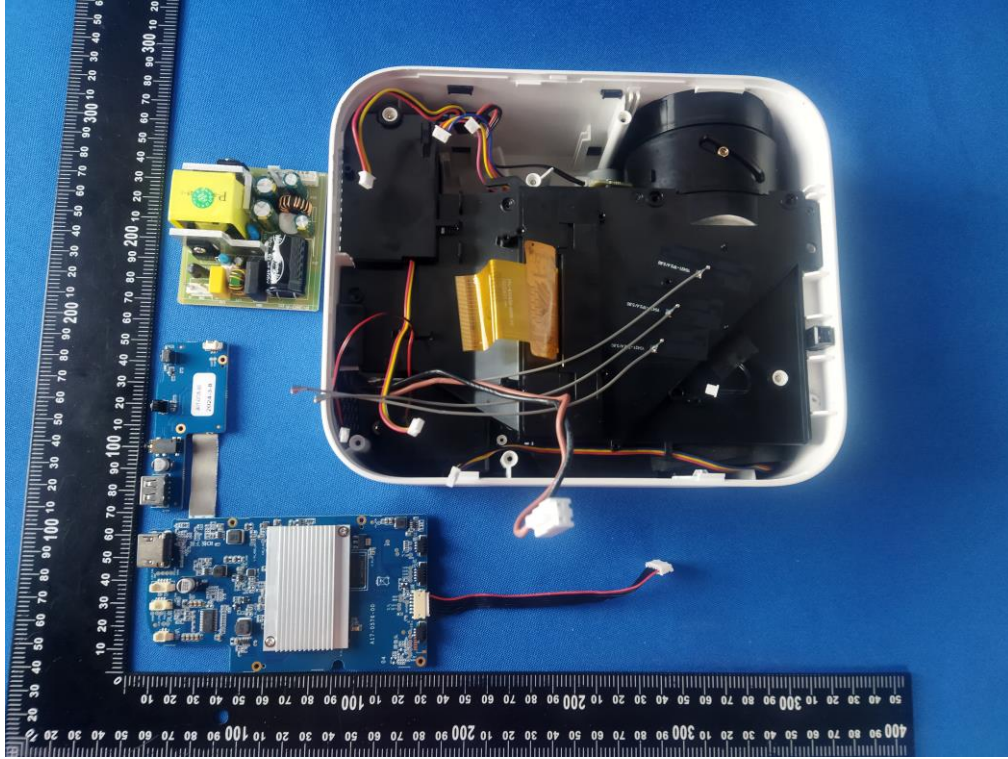


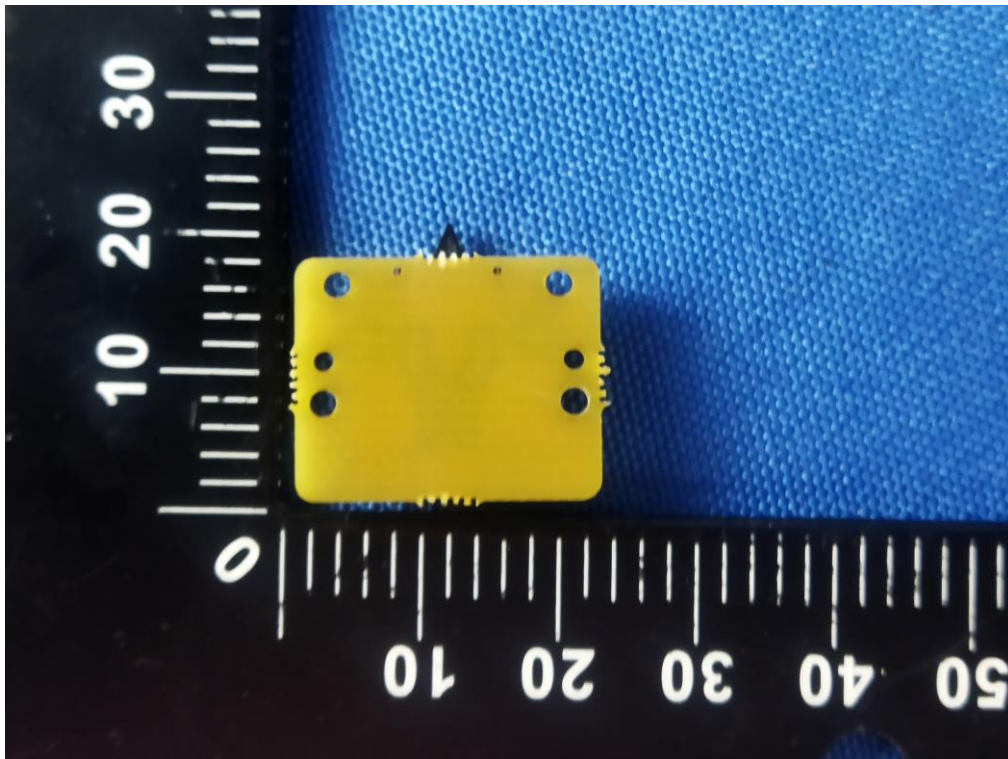
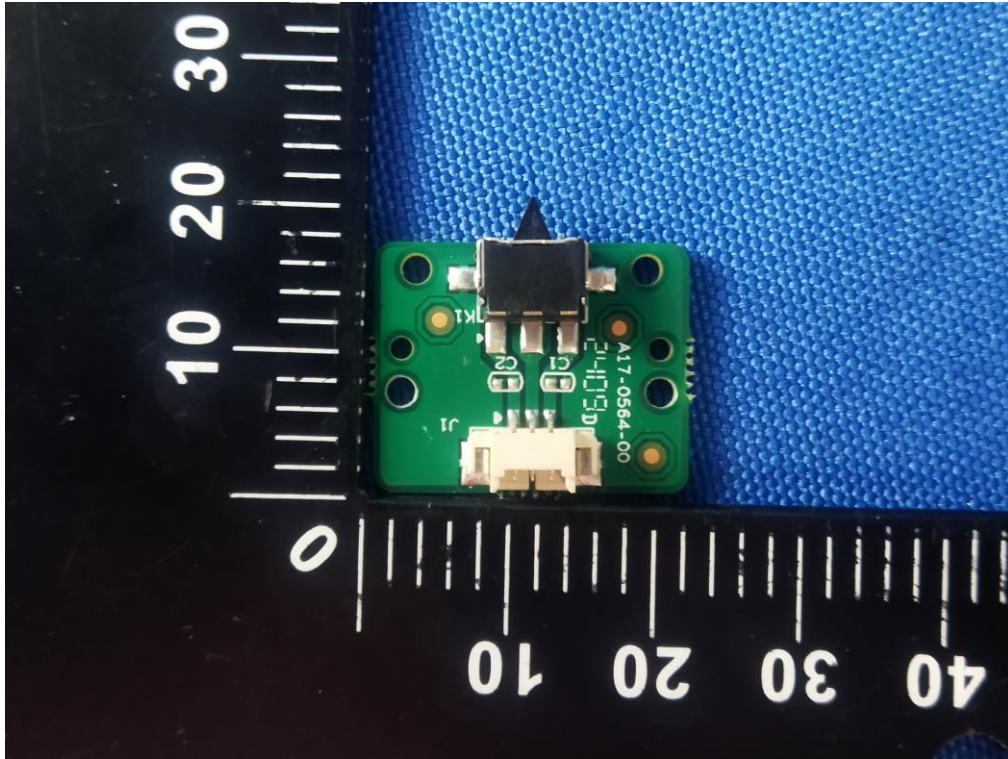


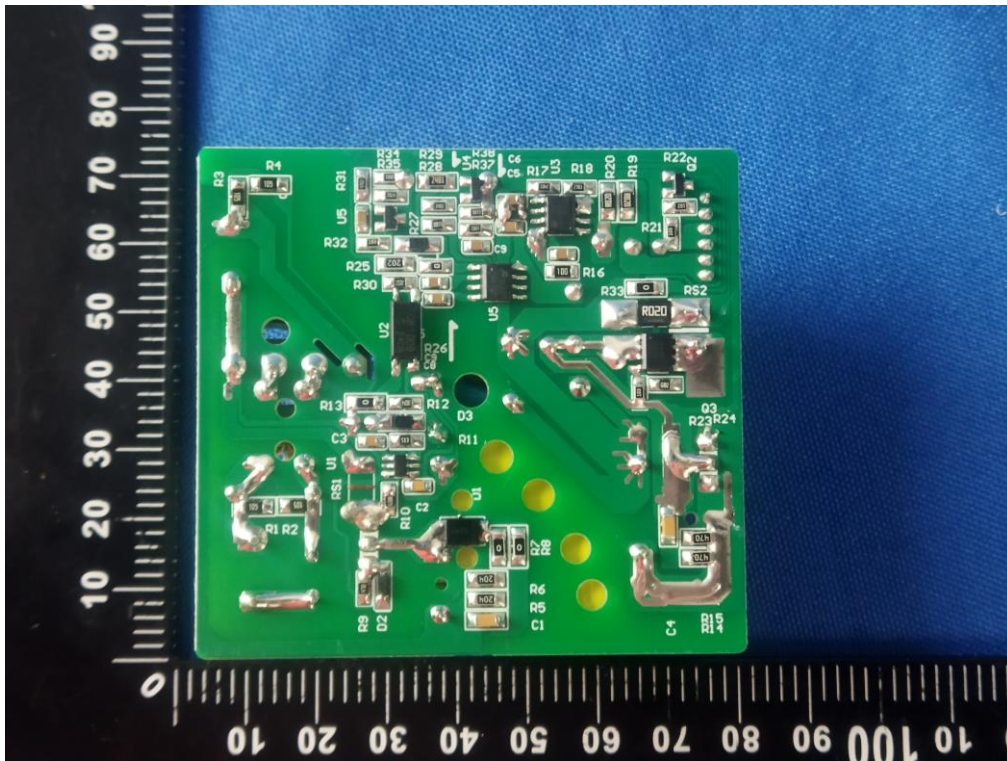
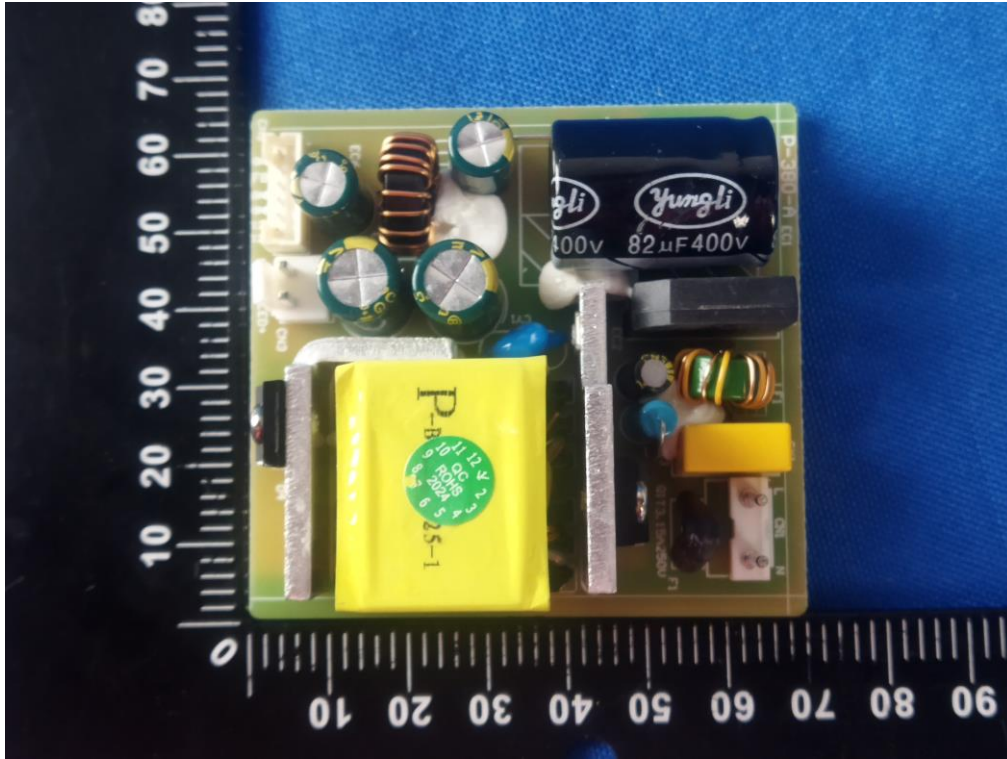


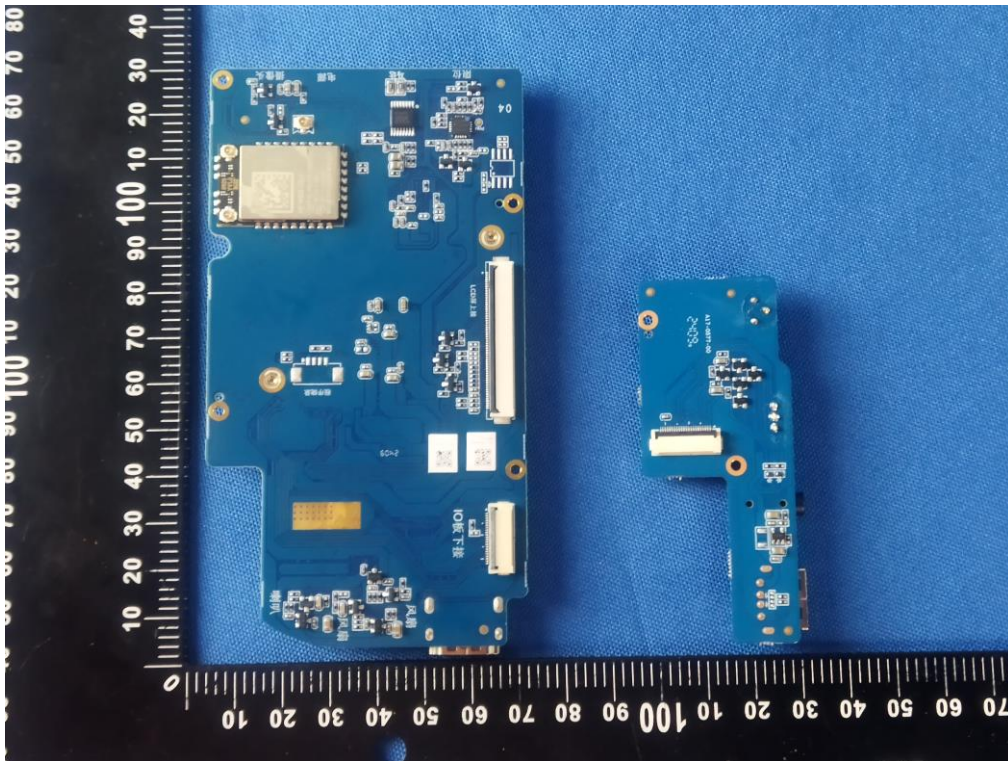
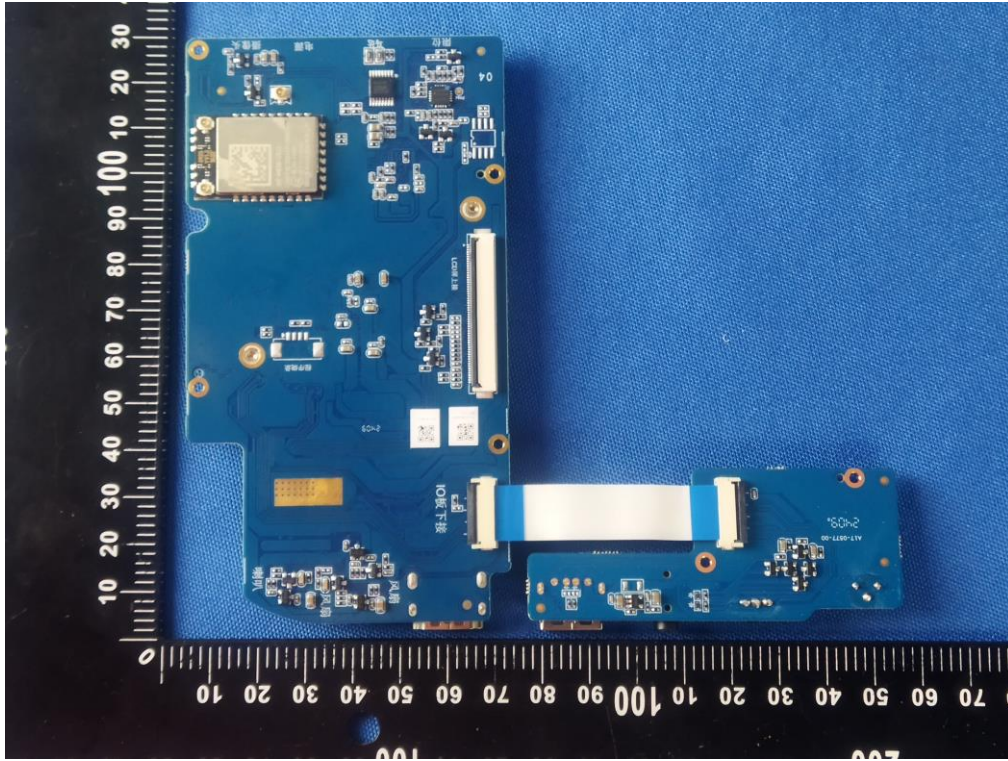


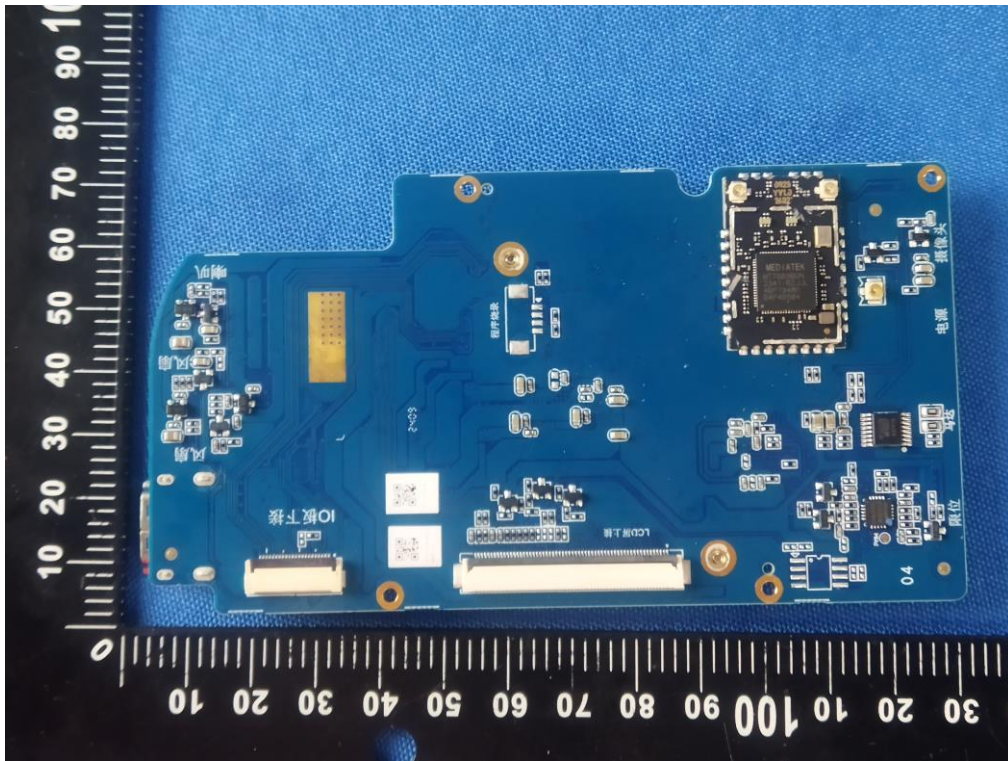
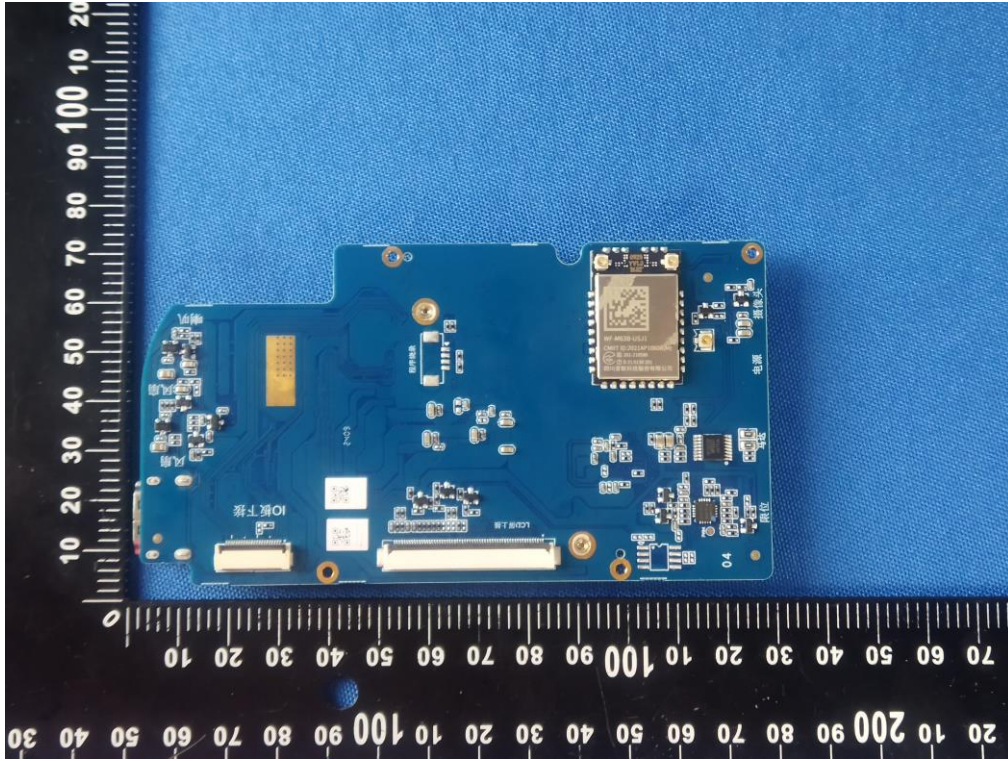


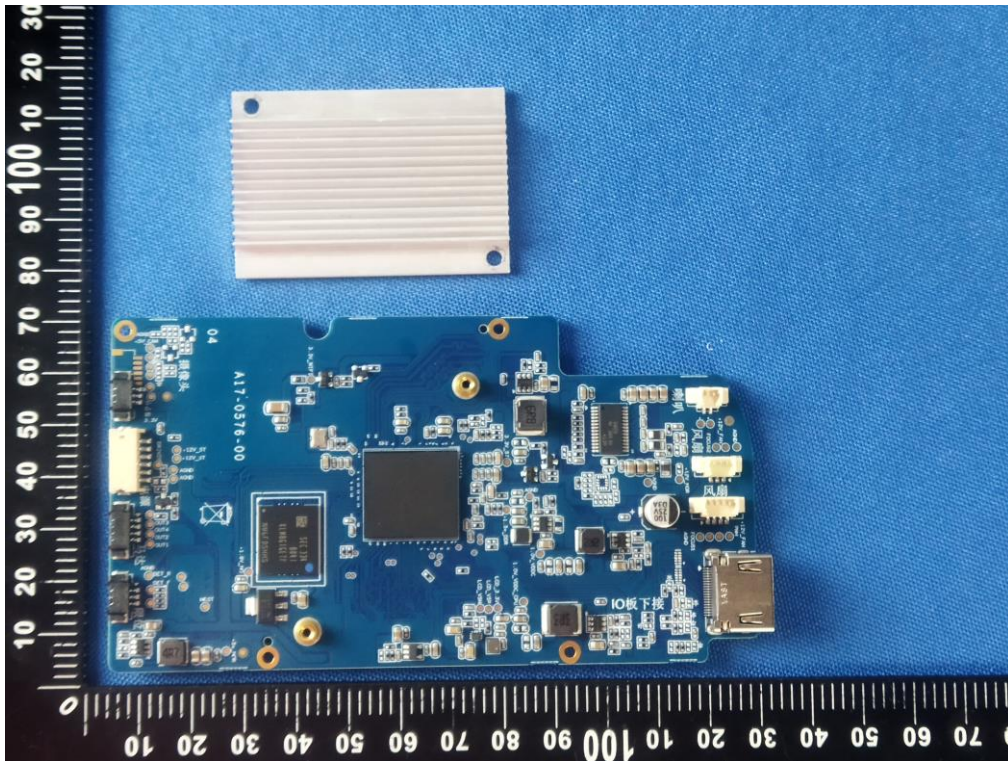
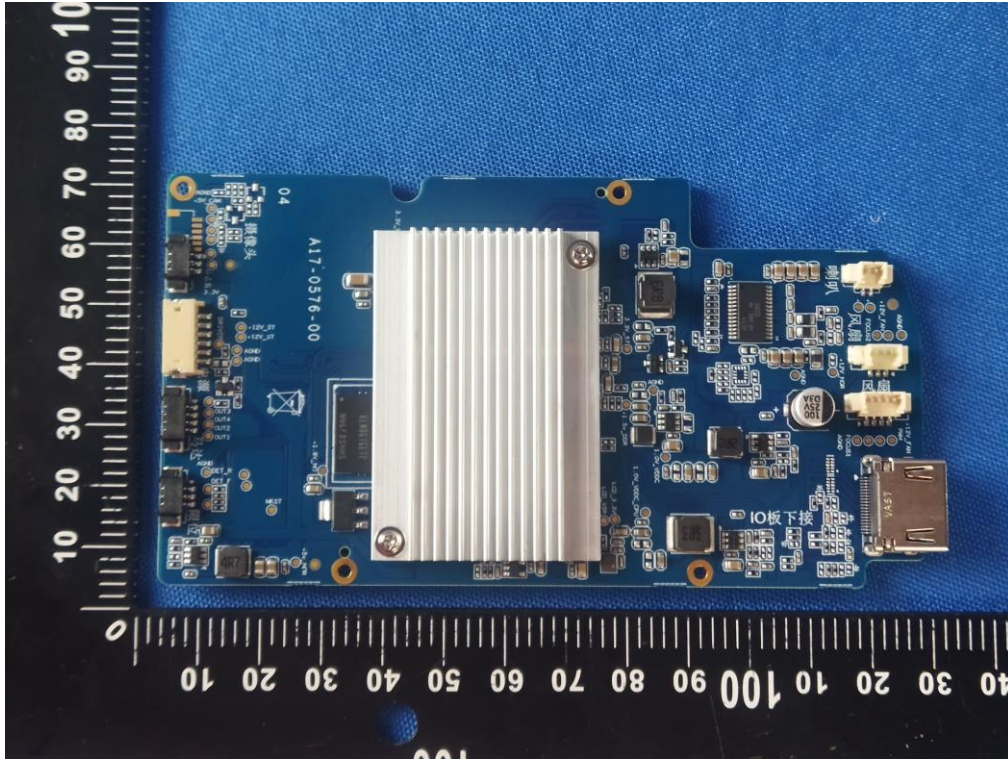


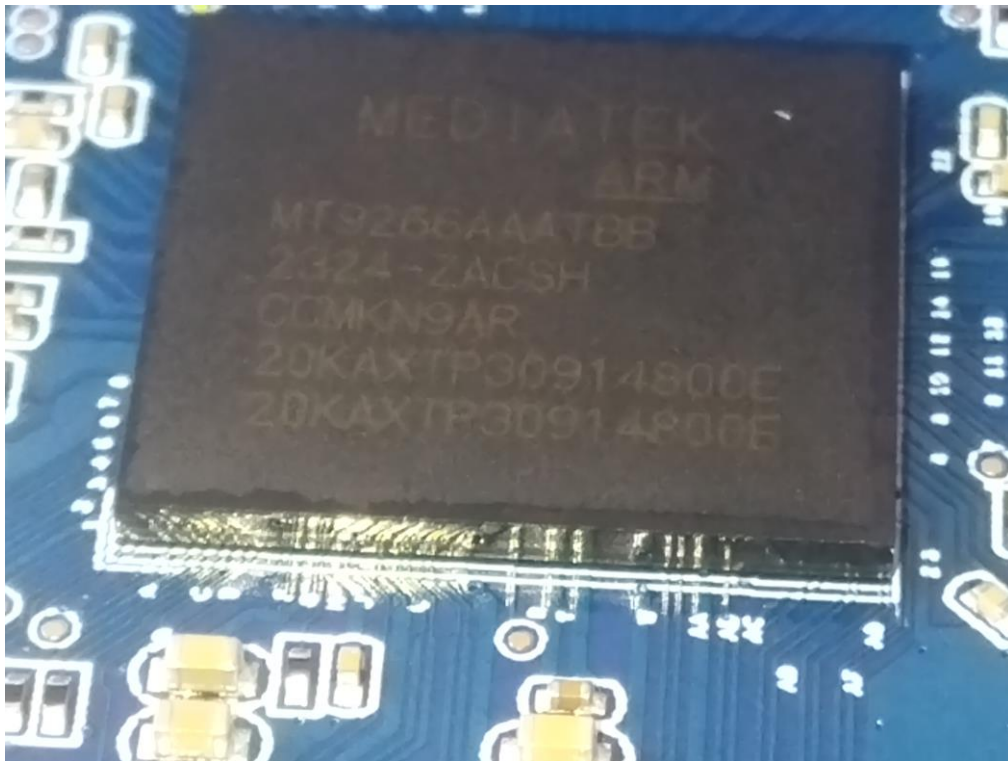
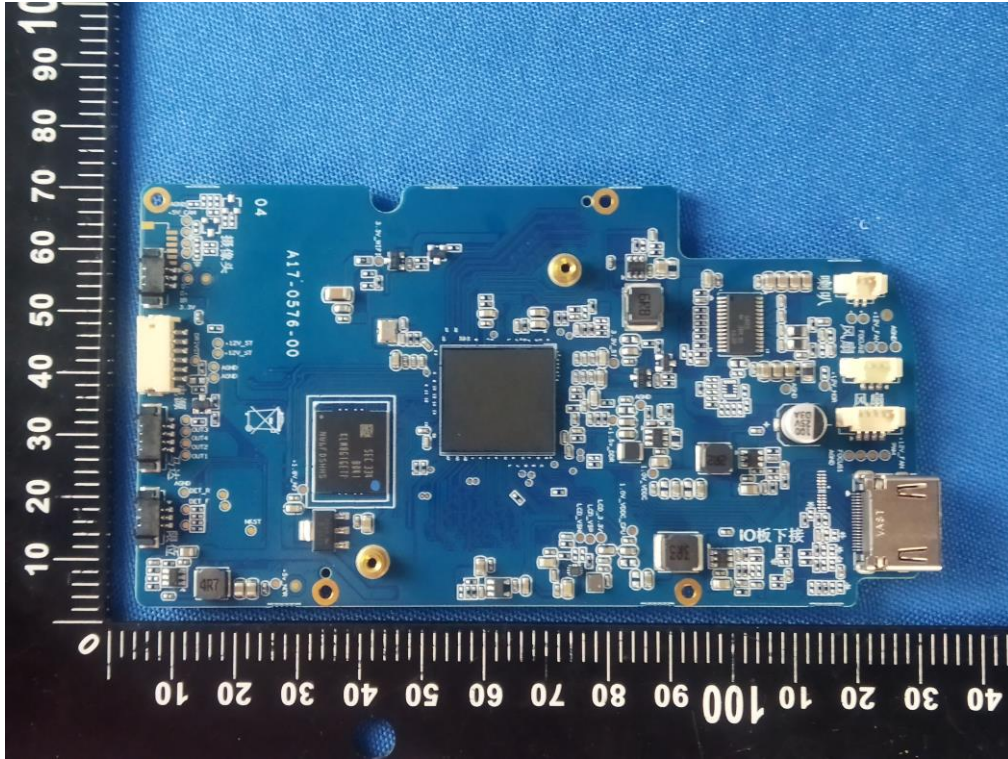


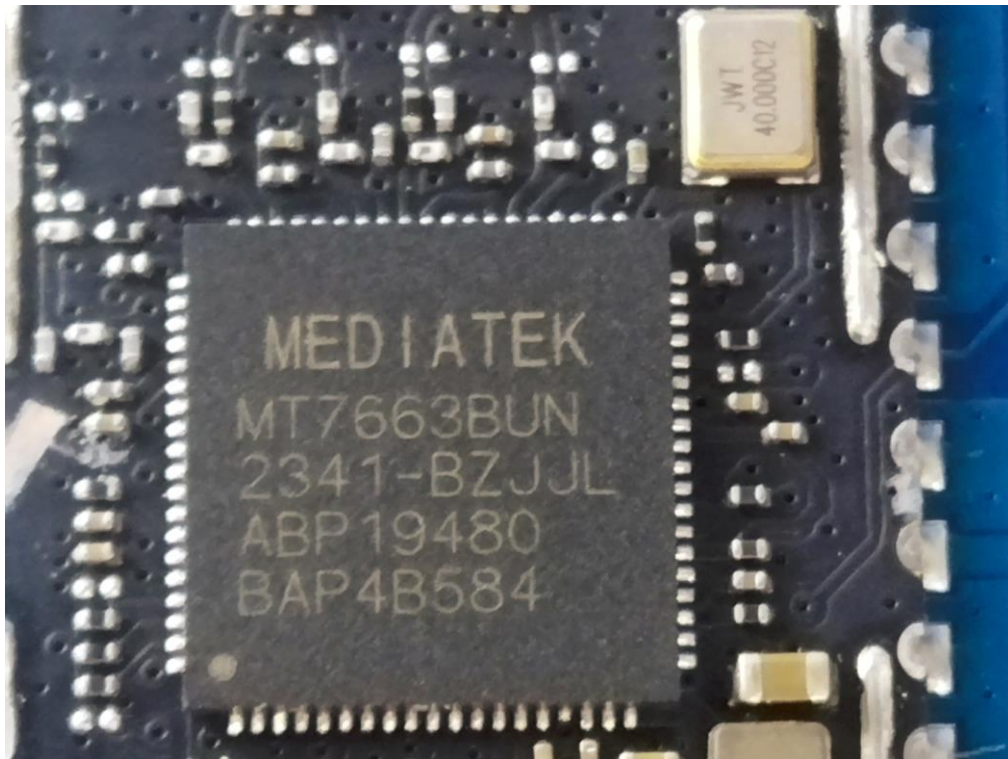
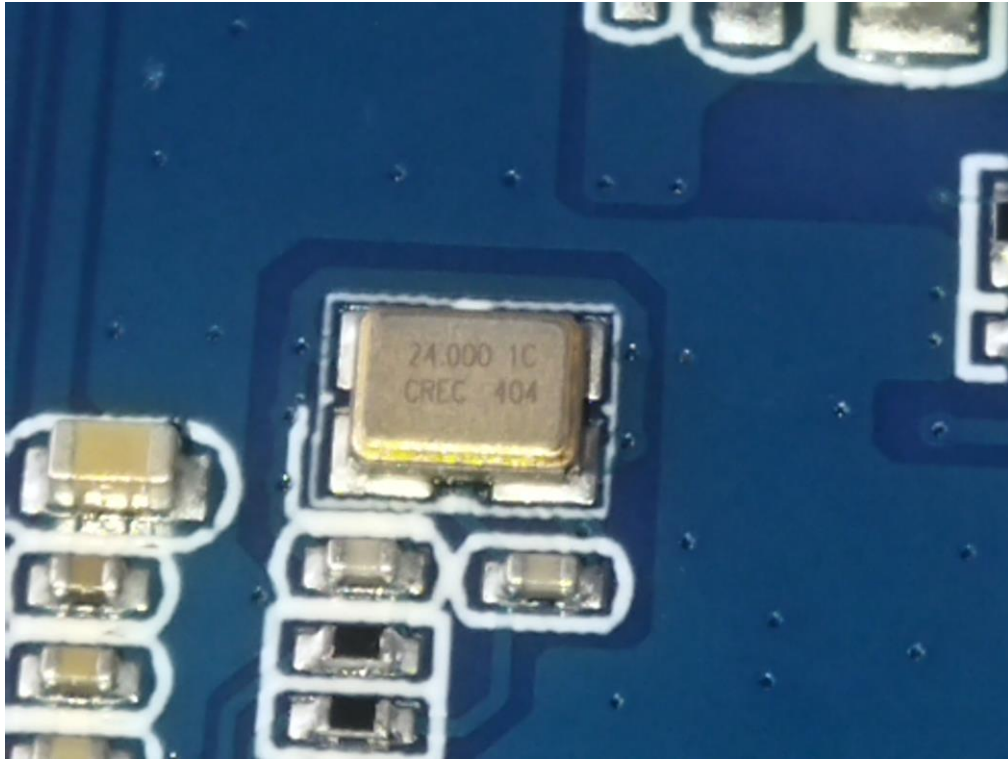


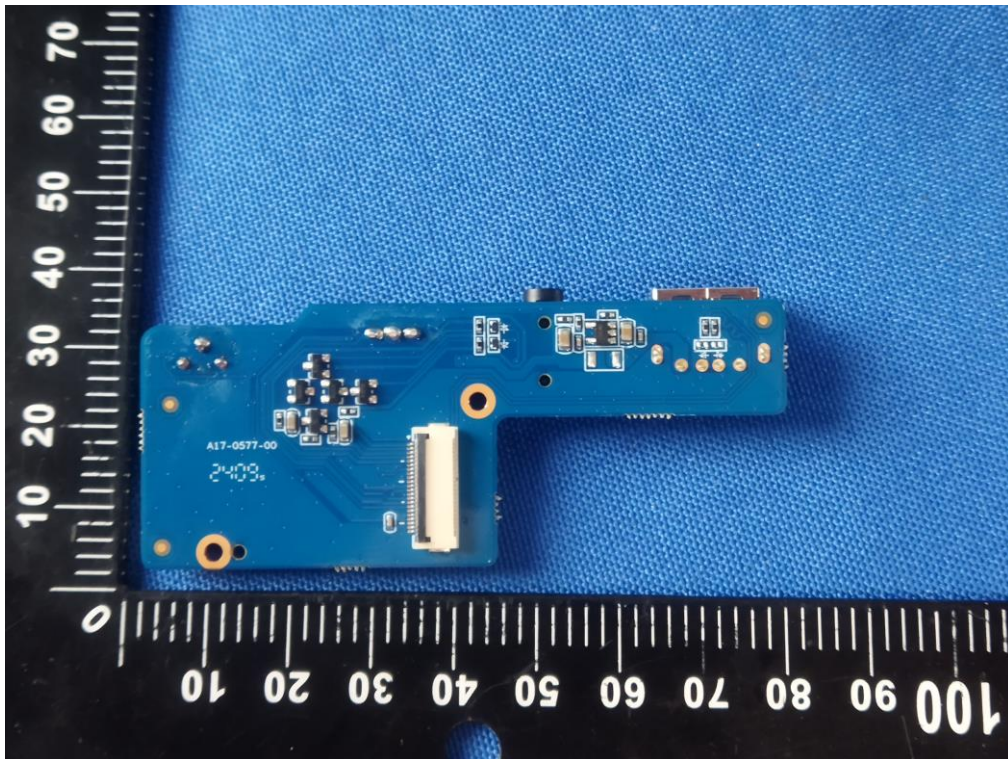
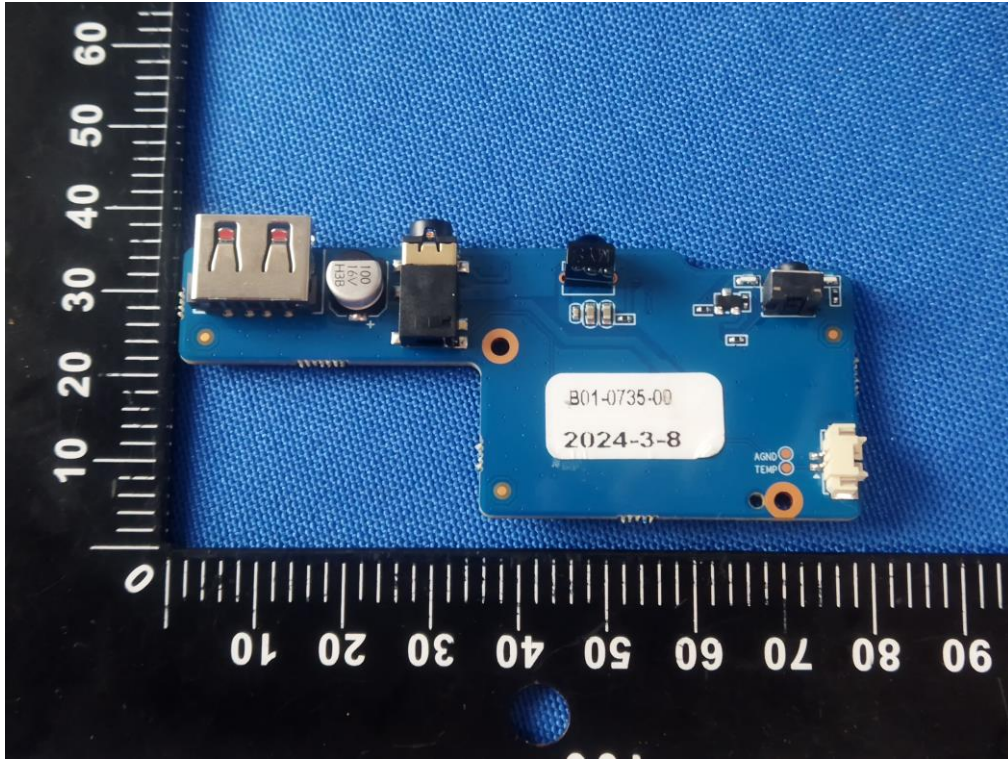


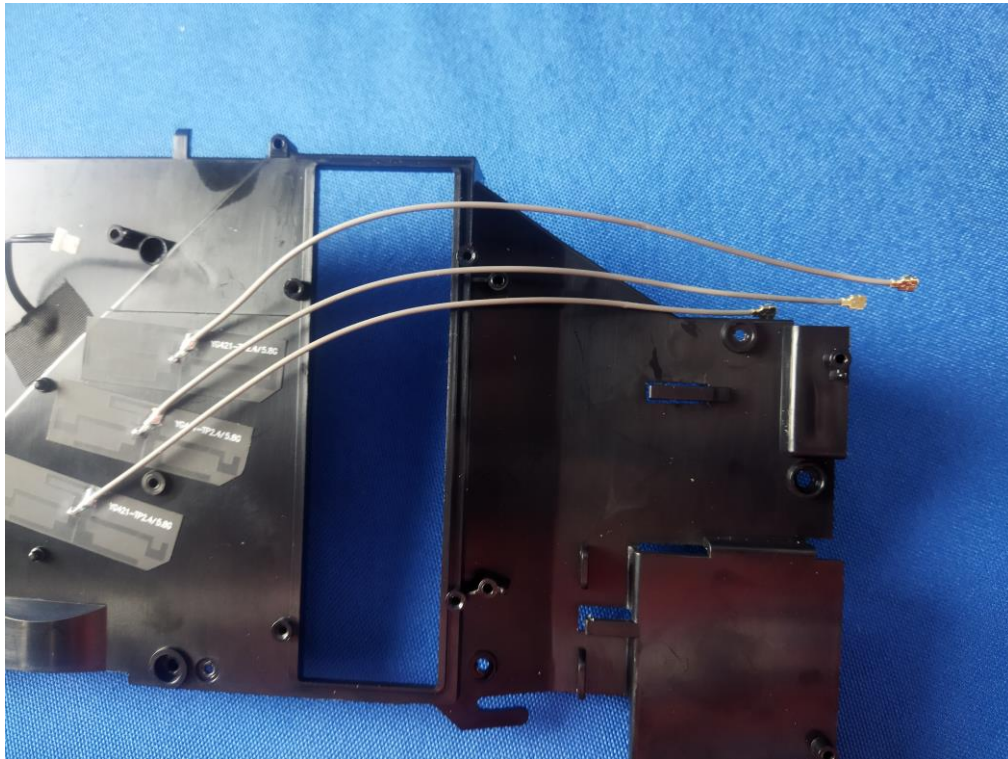
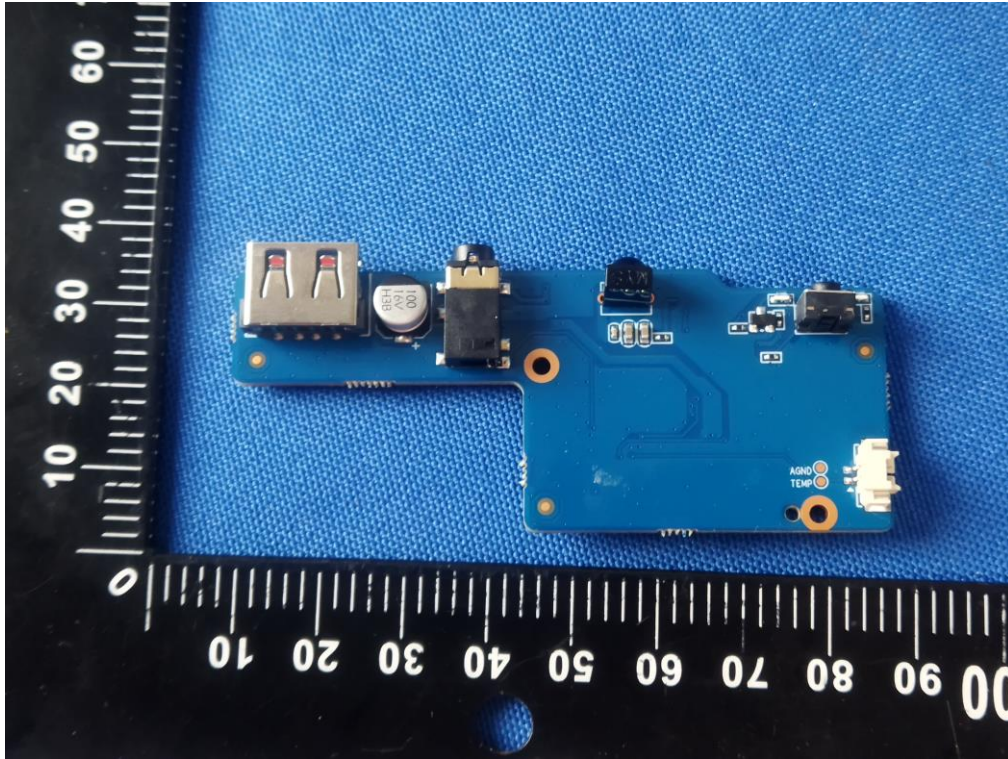












-----END OF REPORT-----