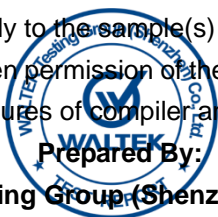


TEST REPORT

Reference No...... : WTX21X03021564W
FCC ID : 2AZES-AC1L
Applicant : BrosTrend Technology LLC
Address : 8 The Green, Suite A, Dover City, Delaware, U.S.A., Zip Code 19901
Product Name : USB Wi-Fi Adapter
Test Model : AC1L
FCC Part 2.1093
Standards : ANSI / IEEE C95.1 : 2005+A1:2010
ANSI / IEEE C95.3 : 2002(R2008)
IEEE 1528 :2013
Date of Receipt sample : Mar.18, 2021
Date of Test..... : Mar.18, 2021 to May.08, 2021
Date of Issue : May.10, 2021
Test Result..... : **Pass**

Remarks:

The results shown in this test report refer only to the sample(s) tested, this test report cannot be reproduced, except in full, without prior written permission of the company. The report would be invalid without specific stamp of test institute and the signatures of compiler and approver.



Prepared By:

Waltek Testing Group (Shenzhen) Co., Ltd.

Address: 1/F., Room 101, Building 1, Hongwei Industrial Park, Liuxian 2nd Road,
Block 70 Bao'an District, Shenzhen, Guangdong, China
Tel.: +86-755-33663308
Fax.: +86-755-33663309

Tested by:

Reviewed By:

Approved & Authorized By:

Hubrey Cai

Lion Cai

Silin Chen

Hubrey Cai / Project Engineer

Lion Cai / RF Manager

Silin Chen / Manager

TABLE OF CONTENTS

1. General Information	3
1.1 Product Description for Equipment Under Test (EUT).....	3
1.2 Test Standards	5
1.3 Test Methodology.....	5
1.4 Test Facility	5
2. Summary of Test Results	6
3. Specific Absorption Rate (SAR).....	7
3.1 Introduction.....	7
3.2 SAR Definition	7
4. SAR Measurement System.....	8
4.1 The Measurement System	8
4.2 Probe.....	8
4.3 Probe Calibration Process.....	11
4.4 Phantom	12
4.5 Device Holder.....	12
4.6 Test Equipment List.....	13
5. Tissue Simulating Liquids.....	14
5.1 Composition of Tissue Simulating Liquid.....	14
5.2 Tissue Dielectric Parameters for Head and Body Phantoms.....	15
5.3 Tissue Calibration Result.....	16
6. SAR Measurement Evaluation	17
6.1 Purpose of System Performance Check.....	17
6.2 System Setup	17
6.3 Validation Results.....	19
7. EUT Testing Position	20
7.1 Body Position	20
7.2 EUT Antenna Position	20
7.3 EUT Testing Position.....	21
8. SAR Measurement Procedures.....	22
8.1 Measurement Procedures	22
8.2 Spatial Peak SAR Evaluation	22
8.3 Area & Zoom Scan Procedures.....	23
8.4 Volume Scan Procedures.....	23
8.5 SAR Averaged Methods	23
8.6 Power Drift Monitoring.....	23
9. SAR Test Result	24
9.1 Conducted RF Output Power	24
9.2 Test Results for Standalone SAR Test.....	27
9.3 Simultaneous Multi-band Transmission SAR Analysis	29
10. Measurement Uncertainty	30
10.1 Uncertainty for EUT SAR Test.....	30
10.2 Uncertainty for System Performance Check.....	31
Annex A. Plots of System Performance Check	33
Annex B. Plots of SAR Measurement.....	39
Annex C. EUT Photos	55
Annex D. Test Setup Photos	57
Annex E. Calibration Certificate.....	59

1. General Information

1.1 Product Description for Equipment Under Test (EUT)

Client Information

Applicant: BrosTrend Technology LLC
 Address of applicant: 8 The Green, Suite A, Dover City, Delaware, U.S.A., Zip Code 19901

Manufacturer: BrosTrend Technology LLC
 Address of manufacturer: Room 205, Building No. 5, YaoXing HuaYuan, XinHuiDaDao No. 45, XinHui District, JiangMen City, GuangDong Province, CHINA, Postage Code:529100

General Description of EUT:	
Product Name:	USB Wi-Fi Adapter
Trade Name:	BrosTrend
Model No.:	AC1L
Adding Model(s):	AC1, AC8, AC9
Software Version:	1030.40.128.2019
Hardware Version:	TC-W8812BU3
<p><i>Note:</i></p> <ol style="list-style-type: none"> <i>The test data is gathered from a production sample, provided by the manufacturer. The appearance of others models listed in the report is different from main-test model AC1L, but the circuit and the electronic construction do not change, declared by the manufacturer.</i> <i>The USB cable USB cable for testing is not influence the radiating characteristics and output power of the transmitter.</i> <i>The USB cable USB cable for testing is 10-inches.</i> 	

Technical Characteristics of EUT:	
WIFI(2.4G)	
Support Standards:	802.11b, 802.11g, 802.11n-HT20/HT40
Frequency Range:	2412-2462MHz for 802.11b/g/n(HT20), 2422-2452MHz for 802.11n(HT40)
RF Output Power:	15.16dBm (Conducted)
Type of Modulation:	DBPSK,BPSK,DQPSK,QPSK,16QAM,64QAM
Quantity of Channels:	11 for 802.11b/g/n-HT20,7 for 802.11b/g/n-HT40
Channel Separation:	5MHz
Antenna Type:	PCB Antenna
Antenna Gain:	3dBi
Wi-Fi(5GHz)	
Support Standards:	802.11a, 802.11n-HT20/40, 802.11ac-VHT80
Frequency Range:	Band 1: 5180-5240MHz,Band 4: 5745-5825MHz
RF Output Power:	12.68dBm (Conducted)
Type of Modulation:	QPSK, 16QAM, 64QAM, 256-QAM
Type of Antenna:	PCB Antenna
Antenna Gain:	3dBi

1.2 Test Standards

The following report is prepared on behalf of the BrosTrend Technology LLC in accordance with FCC 47 CFR Part 2.1093, ANSI/IEEE C95.1-2005, ANSI / IEEE C95.3 :2002, IEEE 1528-2013, KDB 447498 D01 v06, KDB 648474 D04 v01r03, KDB 248227 D01 v02r02, KDB 941225 D01 v03r01, KDB 941225 D05 v02r05 , and KDB 865664 D01 v01r04 and KDB 865664 D02 v01r02.

The objective is to determine compliance with FCC Part 2.1093 of the Federal Communication Commissions rules.

Maintenance of compliance is the responsibility of the manufacturer. Any modification of the product, which result in lowering the emission, should be checked to ensure compliance has been maintained.

1.3 Test Methodology

All measurements contained in this report were conducted with KDB 865664 D01 v01r04 and KDB 865664 D02 v01r02. The public notice KDB 447498 D01 v06 for Mobile and Portable Devices RF Exposure Procedure also.

1.4 Test Facility

Address of the test laboratory

Laboratory: Waltek Testing Group (Shenzhen) Co., Ltd.

Address: 1/F., Room 101, Building 1, Hongwei Industrial Park, Liuxian 2nd Road, Block 70 Bao'an District, Shenzhen, Guangdong, China

FCC – Registration No.: 125990

Waltek Testing Group (Shenzhen) Co., Ltd. EMC Laboratory has been registered and fully described in a report filed with the FCC (Federal Communications Commission). The acceptance letter from the FCC is maintained in our files. The Designation Number is CN5010. Test Firm Registration Number is 125990.

Industry Canada (IC) Registration No.: 11464A

The 3m Semi-anechoic chamber of Waltek Testing Group (Shenzhen) Co., Ltd. has been registered by Certification and Engineering Bureau of Industry Canada for radio equipment testing with Registration No.: 11464A.

2. Summary of Test Results

The maximum results of Specific Absorption Rate (SAR) have found during testing are as follows:

Frequency Band	Body-worn (5mm Gap)	SAR _{1g} Limit (W/kg)
	Maximum SAR _{1g} (W/kg)	
WLAN 2.4GHz	0.562	1.6
WLAN 5GHz	0.636	1.6
Simultaneous Transmission	0.805	1.6

The device is in compliance with Specific Absorption Rate (SAR) for general population/uncontrolled exposure limits (1.6 W/kg) specified in FCC 47 CFR Part 2.1093 and ANSI/IEEE C95.1-2005+A1:2010, and had been tested in accordance with the measurement methods and procedure specified in KDB 865664 D01 v01r04, KDB 865664 D02 v01r02 and IEC 62209-2:2010.

3. Specific Absorption Rate (SAR)

3.1 Introduction

SAR is related to the rate at which energy is absorbed per unit mass in an object exposed to a radio field. The SAR distribution in a biological body is complicated and is usually carried out by experimental techniques or numerical modeling. The standard recommends limits for two tiers of groups, occupational/controlled and general population/uncontrolled, based on a person's awareness and ability to exercise control over his or her exposure. In general, occupational/controlled exposure limits are higher than the limits for general population/uncontrolled.

3.2 SAR Definition

The SAR definition is the time derivative (rate) of the incremental energy (dW) absorbed by (dissipated in) an incremental mass (dm) contained in a volume element (dv) of a given density (ρ). The equation description is as below:

$$\text{SAR} = \frac{d}{dt} \left(\frac{dW}{dm} \right) = \frac{d}{dt} \left(\frac{dW}{\rho dv} \right)$$

SAR is expressed in units of Watts per kilogram (W/kg)

SAR measurement can be either related to the temperature elevation in tissue by

$$\text{SAR} = C \left(\frac{\delta T}{\delta t} \right)$$

Where: C is the specific heat capacity, δT is the temperature rise and δt is the exposure duration, or related to the electrical field in the tissue by

$$\text{SAR} = \frac{\sigma |E|^2}{\rho}$$

Where: σ is the conductivity of the tissue, ρ is the mass density of the tissue and E is the RMS electrical field strength.

However for evaluating SAR of low power transmitter, electrical field measurement is typically applied.

4. SAR Measurement System

4.1 The Measurement System

Comosar is a system that is able to determine the SAR distribution inside a phantom of human being according to different standards. The Comosar system consists of the following items:

- Main computer to control all the system
- 6 axis robot
- Data acquisition system
- Miniature E-field probe
- Phone holder
- Head simulating tissue

The following figure shows the system.



The EUT under test operating at the maximum power level is placed in the phone holder, under the phantom, which is filled with head simulating liquid. The E-Field probe measures the electric field inside the phantom. The OpenSAR software computes the results to give a SAR value in a 1g or 10g mass.

4.2 Probe

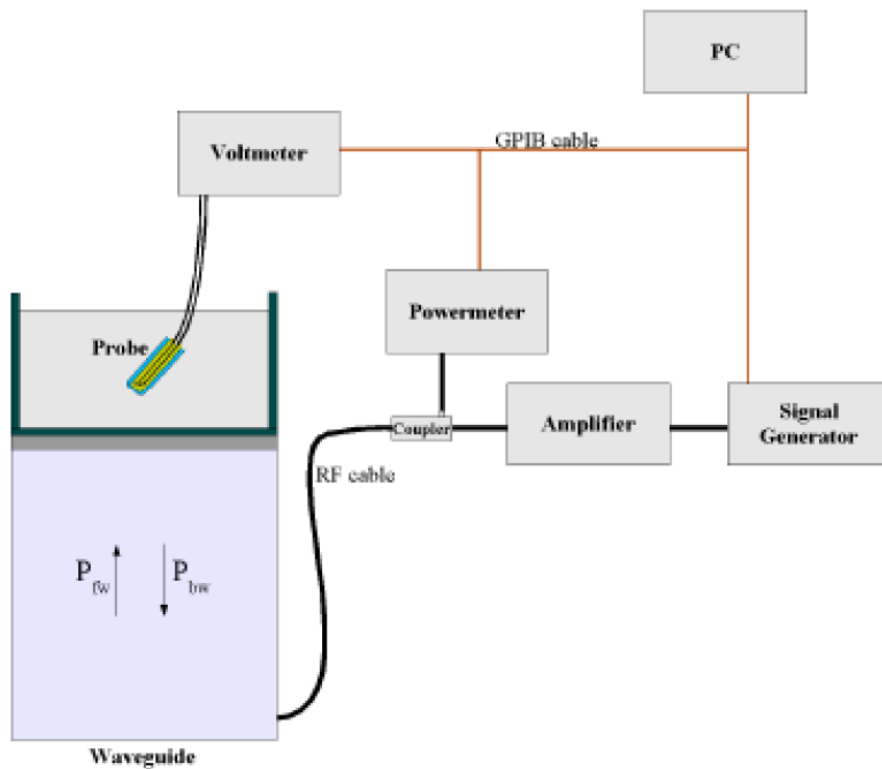
For the measurements the Specific Dosimetric E-Field Probe SSE5 SN 09/13 EP168 with following specifications is used

- Dynamic range: 0.01-100 W/kg
- Probe Length: 330 mm
- Length of Individual Dipoles: 4.5 mm
- Maximum external diameter: 8 mm
- Probe Tip External Diameter : 5 mm

Waltek Testing Group (Shenzhen) Co., Ltd.
<http://www.semtest.com.cn>

- Distance between dipoles / probe extremity: 2.7mm
 - Probe linearity: <0.25 dB
 - Axial Isotropy: <0.25 dB
 - Spherical Isotropy: <0.50 dB
 - Calibration range: 700 to 3000MHz for head & body simulating liquid.
- Angle between probe axis (evaluation axis) and surface normal line: less than 30°

Probe calibration is realized, in compliance with EN 62209-1 and IEEE 1528 STD, with CALISAR, Antenna proprietary calibration system. The calibration is performed with the EN 62209-1 annexe technique using reference guide at the five frequencies.



$$SAR = \frac{4(P_{fw} - P_{bw})}{ab\delta} \cos^2\left(\pi \frac{y}{a}\right) e^{-(2z/\delta)}$$

Where :

P_{fw} = Forward Power

P_{bw} = Backward Power

a and b = Waveguide dimensions

δ = Skin depth

Keithley configuration:

Rate = Medium; Filter = ON; RDGS = 10; Filter type = Moving Average; Range auto after each calibration, a SAR measurement is performed on a validation dipole and compared with a NPL calibrated probe, to verify it.

Waltek Testing Group (Shenzhen) Co., Ltd.

<http://www.semtest.com.cn>

The calibration factors, $CF(N)$, for the 3 sensors corresponding to dipole 1, dipole 2 and dipole 3 are:

$$CF(N)=SAR(N)/V_{lin}(N) \quad (N=1,2,3)$$

The linearised output voltage $V_{lin}(N)$ is obtained from the displayed output voltage $V(N)$ using

$$V_{lin}(N)=V(N)*(1+V(N)/DCP(N)) \quad (N=1,2,3)$$

where DCP is the diode compression point in mV.

4.3 Probe Calibration Process

Dosimetric Assessment Procedure

Each E-Probe/Probe Amplifier combination has unique calibration parameters. SATIMO Probe calibration procedure is conducted to determine the proper amplifier settings to enter in the probe parameters. The amplifier settings are determined for a given frequency by subjecting the probe to a known E-field density (1 mW/cm²) using an with CALISAR, Antenna proprietary calibration system.

Free Space Assessment Procedure

The free space E-field from amplified probe outputs is determined in a test chamber. This calibration can be performed in a TEM cell if the frequency is below 1 GHz and in a waveguide or other methodologies above 1 GHz for free space. For the free space calibration, the probe is placed in the volumetric center of the cavity and at the proper orientation with the field. The probe is rotated 360 degrees until the three channels show the maximum reading. The power density readings equates to 1mW/cm².

Temperature Assessment Procedure

E-field temperature correlation calibration is performed in a flat phantom filled with the appropriate simulated head tissue. The E-field in the medium correlates with the temperature rise in the dielectric medium. For temperature correlation calibration a RF transparent thermistor-based temperature probe is used in conjunction with the E-field probe.

$$SAR = C \frac{\Delta T}{\Delta t}$$

Where:

Δt = exposure time (30 seconds),

C = heat capacity of tissue (brain or muscle),

ΔT = temperature increase due to RF exposure.

SAR is proportional to $\Delta T / \Delta t$, the initial rate of tissue heating, before thermal diffusion takes place. The electric field in the simulated tissue can be used to estimate SAR by equating the thermally derived SAR to that with the E- field component.

$$SAR = \frac{|E|^2 \cdot \sigma}{\rho}$$

Where:

σ = simulated tissue conductivity,

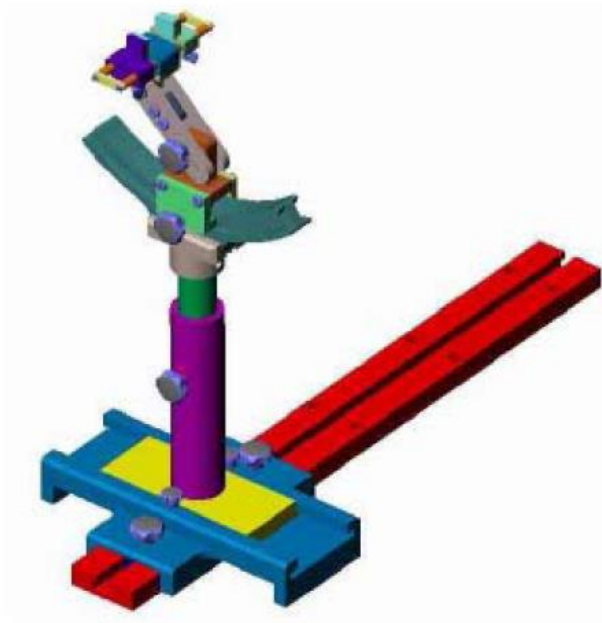
ρ = Tissue density (1.25 g/cm³ for brain tissue)

4.4 Phantom

For the measurements the Specific Anthropomorphic Mannequin (SAM) defined by the IEEE SCC-34/SC2 group is used. The phantom is a polyurethane shell integrated in a wooden table. The thickness of the phantom amounts to 2mm +/- 0.2mm. It enables the dosimetric evaluation of left and right phone usage and includes an additional flat phantom part for the simplified performance check. The phantom set-up includes a cover, which prevents the evaporation of the liquid.

4.5 Device Holder

The positioning system allows obtaining cheek and tilting position with a very good accuracy. In compliance with CENELEC, the tilt angle uncertainty is lower than 1 °.



System Material	Permittivity	Loss Tangent
Delrin	3.7	0.005

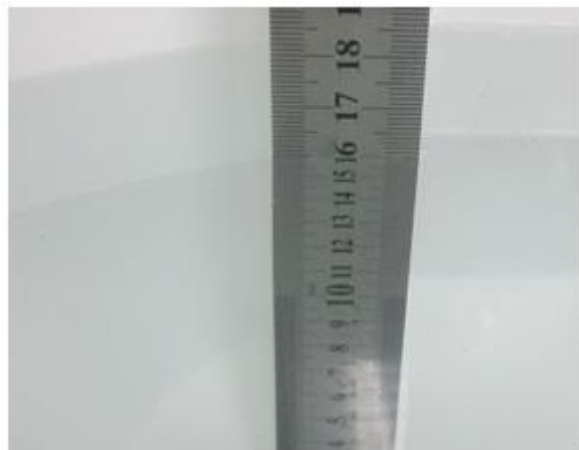
4.6 Test Equipment List

Description	Manufacturer	Model	Serial Number	Cal. Date	Due. Date
E-Field Probe	MVG	SSE2	SN 45/15 EPGO280	2020-07-03	2022-07-02
2450MHz Dipole	MVG	SID2450	SN 13/15 DIP 2G450-364	2020-03-11	2022-03-10
5 GHz Waveguide	MVG	SWG5500	SN 49/16 WGA45	2020-07-03	2022-07-02
Dielectric Probe	SATIMO	SCLMP	SN 47/12 OCPG49	2020-03-11	2022-03-10
SAM Phantom	SATIMO	SAM	SN/ 47/12 SAM95	N/A	N/A
Multi Meter	Keithley	Keithley 2000	4006367	2021-03-27	2022-03-26
Power meter	Keithley	3500	JC-2017-09-001	2021-03-27	2022-03-26
Power meter	Keithley	3500	JC-2017-09-001	2021-03-27	2022-03-26
Power Sensor	Agilent	11636B	JC-2017-10-002	2021-03-27	2022-03-26
Signal Generator	Rohde & Schwarz	SMR20	100047	2021-03-27	2022-03-26
Universal Tester	Rohde & Schwarz	CMU200	112315	2021-03-27	2022-03-26
Communications Tester	Rohde & Schwarz	CMW500	148650	2021-03-27	2022-03-26
Network Analyzer	HP	8753C	SEMT-1064	2021-03-27	2022-03-26
Directional Couplers	Agilent	778D	20160	2021-03-27	2022-03-26

5. Tissue Simulating Liquids

5.1 Composition of Tissue Simulating Liquid

For the measurement of the field distribution inside the SAM phantom with SMTIMO, the phantom must be filled with around 25 liters of homogeneous body tissue simulating liquid. For head SAR testing, the liquid height from the ear reference point (ERP) of the phantom to the liquid top surface is larger than 15 cm. For body SAR testing, the liquid height from the center of the flat phantom to the liquid top surface is larger than 15 cm. Please see the following photos for the liquid height.



Liquid Height for Body SAR

The Composition of Tissue Simulating Liquid

Frequency (MHz)	Water (%)	Salt (%)	1,2-Propane diol (%)	HEC (%)	Preventol (%)	DGBE (%)
Head/Body						
2450	55.0	0.1	0	0	0	44.9
2600	54.9	0.1	0	0	0	45.0

Frequency (MHz)	Water (%)	Hexyl Carbitol (%)	Triton X-100 (%)
Head/Body			
5000-6000	65.52	17.24	17.24

5.2 Tissue Dielectric Parameters for Head and Body Phantoms

The IEEE Std. 1528, FCC KDBs and CEI/IEC 62209 standards state that the system validation measurements must be performed using a reference dipole meeting the fore mentioned return loss and mechanical dimension requirements. The validation measurement must be performed against a liquid filled flat phantom, with the phantom constructed as outlined in the fore mentioned standards. Per the standards, the dipole shall be positioned below the bottom of the phantom, with the dipole length centered and parallel to the longest dimension of the flat phantom, with the top surface of the dipole at the described distance from the bottom surface of the phantom.

Target Frequency (MHz)	Head	
	Conductivity (σ)	Permittivity (ϵ_r)
150	0.76	52.3
300	0.87	45.3
450	0.87	43.5
750	0.89	41.9
835	0.90	41.5
900	0.97	41.5
915	0.98	41.5
1450	1.20	40.5
1610	1.29	40.3
1800-2000	1.40	40.0
2450	1.80	39.2
3000	2.40	38.5
5200	4.66	36.0
5300	35.9	4.76
5600	5.07	35.5
5800	5.27	35.3

5.3 Tissue Calibration Result

The dielectric parameters of the liquids were verified prior to the SAR evaluation using COMOSAR Dielectric Probe Kit and an Agilent Network Analyzer.

Calibration Result for Dielectric Parameters of Tissue Simulating Liquid

Head Tissue Simulating Liquid									
Freq. MHz.	Temp. (°C)	Conductivity			Permittivity			Limit (%)	Date
		Reading (σ)	Target (σ)	Delta (%)	Reading (ϵ_r)	Target (ϵ_r)	Delta (%)		
2450	22.1	1.83	1.80	1.67	39.86	39.2	1.68	±5	2021-04-08
5200	22.4	4.72	4.66	1.29	36.56	36.0	1.56	±5	2021-05-08
5800	22.4	5.35	5.27	1.52	35.08	35.3	-0.62	±5	2021-05-08

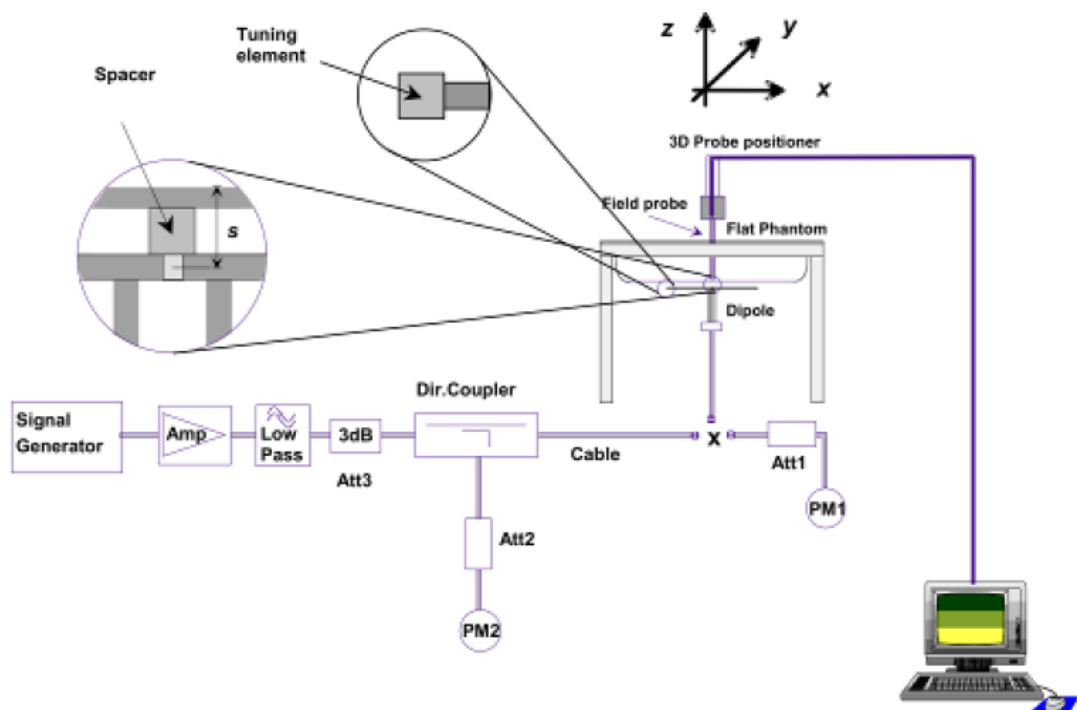
6. SAR Measurement Evaluation

6.1 Purpose of System Performance Check

The system performance check verifies that the system operates within its specifications. System and operator errors can be detected and corrected. It is recommended that the system performance check be performed prior to any usage of the system in order to guarantee reproducible results. The system performance check uses normal SAR measurements in a simplified setup with a well characterized source. This setup was selected to give a high sensitivity to all parameters that might fail or vary over time. The system check does not intend to replace the calibration of the components, but indicates situations where the system uncertainty is exceeded due to drift or failure.

6.2 System Setup

In the simplified setup for system evaluation, the EUT is replaced by a calibrated dipole and the power source is replaced by a continuous wave which comes from a signal generator at frequency 2450MHz and 5000MHz. The calibrated dipole must be placed beneath the flat phantom section of the SAM twin phantom with the correct distance holder. The distance holder should touch the phantom surface with a light pressure at the reference marking and be oriented parallel to the long side of the phantom.



System Verification Setup Block Diagram



Setup Photo of Dipole Antenna

The output power on dipole port must be calibrated to 24 dBm(250 mW) before dipole is connected.
The output power on 5 GHz Waveguide must be calibrated to 20 dBm (100mW) before 5 GHz Waveguide is connected.

6.3 Validation Results

Comparing to the original SAR value provided by SATIMO, the validation data should be within its specification of 10 %. Table 6.1 shows the target SAR and measured SAR after normalized to 1W input power. The table below indicates the system performance check can meet the variation criterion.

Frequency	Liquid	Power (mw)	Targeted SAR10g	Measured SAR10g	Normalized SAR10g	Tolerance	Date
2450	Head	250	53.76	12.931	51.724	-3.79	2021-04-08
5200	Head	100	159	16.538	165.38	4.01	2021-05-08
5800	Head	100	181.2	18.702	187.02	3.21	2021-05-08

Targeted and Measurement SAR

Please refer to Annex A for the plots of system performance check.

7. EUT Testing Position

7.1 Body Position

- (a) To position the device parallel to the phantom surface with each side.
- (b) To adjust the device parallel to the flat phantom.
- (c) To adjust the distance between the device surface and the flat phantom to 5mm.



Illustration for Body Position

7.2 EUT Antenna Position

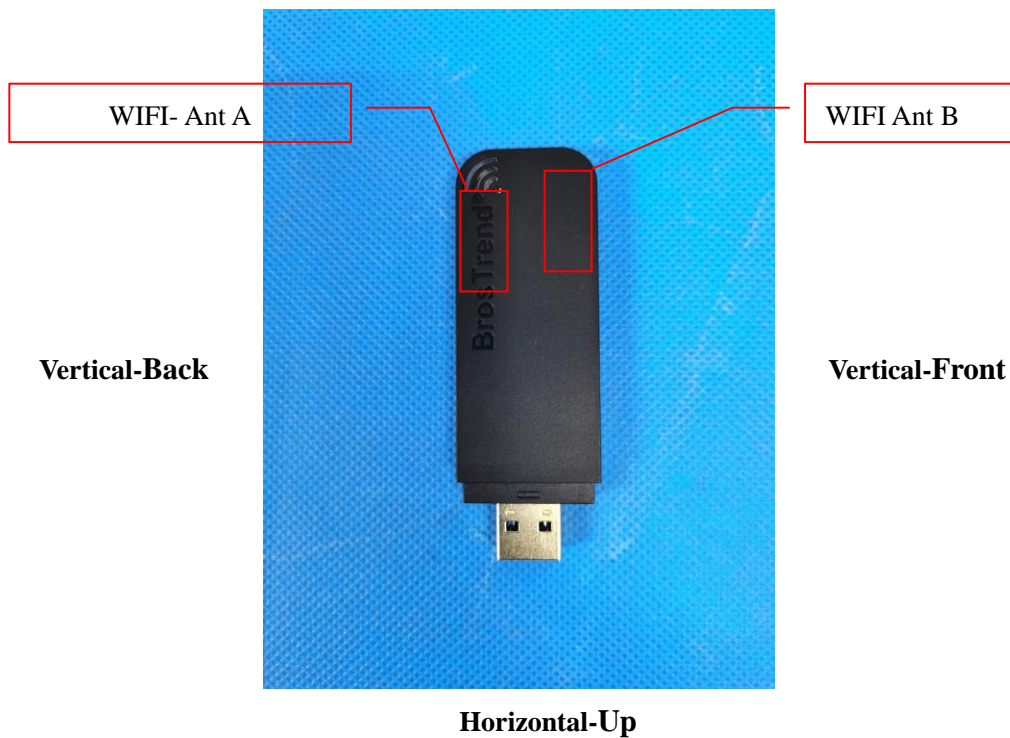


Fig 7.1 Block Diagram for EUT Antenna Position

7.3 EUT Testing Position

Body SAR tests, Test distance: 5mm				
Antennas	Horizontal-Up	Horizontal-Down	Vertical-Front	Vertical-Back
WIFI	Yes	Yes	Yes	Yes

Remark:

1. Test all USB orientations [see figure below: (A) Horizontal-Up, (B) Horizontal-Down, (C) Vertical-Front, and (D) Vertical-Back] with a device-to-phantom separation distance of 5 mm or less, according to KDB 447498 D02,v02 requirements.

Please refer to Annex D for the EUT test setup photos.

8. SAR Measurement Procedures

8.1 Measurement Procedures

The measurement procedures are as follows:

- (a) Use base station simulator (if applicable) or engineering software to transmit RF power continuously (continuous Tx) in the highest power channel.
- (b) Keep EUT to radiate maximum output power or 100% factor (if applicable)
- (c) Measure output power through RF cable and power meter.
- (d) Place the EUT in the positions as Annex D demonstrates.
- (e) Set scan area, grid size and other setting on the SATIMO software.
- (f) Measure SAR results for the highest power channel on each testing position.
- (g) Find out the largest SAR result on these testing positions of each band
- (h) Measure SAR results for other channels in worst SAR testing position if the SAR of highest power channel is larger than 0.8 W/kg

According to the test standard, the recommended procedure for assessing the peak spatial-average SAR value consists of the following steps:

- (a) Power reference measurement
- (b) Area scan
- (c) Zoom scan
- (d) Power drift measurement

8.2 Spatial Peak SAR Evaluation

The procedure for spatial peak SAR evaluation has been implemented according to the test standard. It can be conducted for 1g and 10g, as well as for user-specific masses. The SATIMO software includes all numerical procedures necessary to evaluate the spatial peak SAR value.

The base for the evaluation is a "cube" measurement. The measured volume must include the 1g and 10g cubes with the highest averaged SAR values. For that purpose, the center of the measured volume is aligned to the interpolated peak SAR value of a previously performed area scan.

The entire evaluation of the spatial peak values is performed within the post-processing engine. The system always gives the maximum values for the 1g and 10g cubes. The algorithm to find the cube with highest averaged SAR is divided into the following stages:

- (a) Extraction of the measured data (grid and values) from the Zoom Scan
- (b) Calculation of the SAR value at every measurement point based on all stored data
- (c) Generation of a high-resolution mesh within the measured volume
- (d) Interpolation of all measured values from the measurement grid to the high-resolution grid
- (e) Extrapolation of the entire 3D field distribution to the phantom surface over the distance from sensor to surface
- (f) Calculation of the averaged SAR within masses of 1g and 10g

8.3 Area & Zoom Scan Procedures

First Area Scan is used to locate the approximate location(s) of the local peak SAR value(s). The measurement grid within an Area Scan is defined by the grid extent, grid step size and grid offset. Next, in order to determine the EM field distribution in a three-dimensional spatial extension, Zoom Scan is required. The Zoom Scan measures 5x5x7 points with step size 8, 8 and 5 mm for 300 MHz to 3 GHz, and 8x8x8 points with step size 4, 4 and 2.5 mm for 3 GHz to 6 GHz. The Zoom Scan is performed around the highest E-field value to determine the averaged SAR-distribution over 10 g.

8.4 Volume Scan Procedures

The volume scan is used for assess overlapping SAR distributions for antennas transmitting in different frequency bands. It is equivalent to an oversized zoom scan used in standalone measurements. The measurement volume will be used to enclose all the simultaneous transmitting antennas. For antennas transmitting simultaneously in different frequency bands, the volume scan is measured separately in each frequency band. In order to sum correctly to compute the 1g aggregate SAR, the EUT remain in the same test position for all measurements and all volume scan use the same spatial resolution and grid spacing (step-size is 4, 4 and 2.5 mm). When all volume scan were completed, the software can combine and subsequently superpose these measurement data to calculating the multiband SAR.

8.5 SAR Averaged Methods

The local SAR inside the phantom is measured using small dipole sensing elements inside a probe body. The probe tip must not be in contact with the phantom surface in order to minimize measurements errors, but the highest local SAR will occur at the surface of the phantom.

An extrapolation is using to determinate this highest local SAR values. The extrapolation is based on a fourth-order least-square polynomial fit of measured data. The local SAR value is then extrapolated from the liquid surface with a 1mm step.

The measurements have to be performed over a limited time (due to the duration of the battery) so the step of measurement is high. It could vary between 5 and 8 mm. To obtain an accurate assessment of the maximum SAR averaged over 10g and 1 g requires a very fine resolution in the three dimensional scanned data array.

8.6 Power Drift Monitoring

All SAR testing is under the EUT install full charged battery and transmit maximum output power. In SATIMO measurement software, the power reference measurement and power drift measurement procedures are used for monitoring the power drift of EUT during SAR test. Both these procedures measure the field at a specified reference position before and after the SAR testing. The software will calculate the field difference in dB. If the power drift more than 5%, the SAR will be retested.

9. SAR Test Result

9.1 Conducted RF Output Power

WLAN(2.4G) - ANT A					
Test Mode	Data Rate	Channel	Frequency (MHz)	Average Power (dBm)	Tune-up power (dBm)
802.11b	1Mbps	CH 01	2412	13.67	14.0
		CH 06	2437	13.92	14.0
		CH 11	2462	13.84	14.0
802.11g	6Mbps	CH 01	2412	11.73	12.0
		CH 06	2437	14.12	14.5
		CH 11	2462	13.08	13.5
802.11n (20MHz)	MCS0	CH 01	2412	11.67	12.0
		CH 06	2437	14.13	14.5
		CH 11	2462	12.01	12.5
802.11n (40MHz)	MCS0	CH 03	2422	10.46	10.5
		CH 07	2442	12.22	12.5
		CH 11	2452	10.25	10.5

WLAN(2.4G) - ANT B					
Test Mode	Data Rate	Channel	Frequency (MHz)	Average Power (dBm)	Tune-up power (dBm)
802.11b	1Mbps	CH 01	2412	14.52	15.0
		CH 06	2437	14.82	15.0
		CH 11	2462	15.07	15.5
802.11g	6Mbps	CH 01	2412	12.99	13.0
		CH 06	2437	15.16	15.5
		CH 11	2462	14.27	14.5
802.11n (20MHz)	MCS0	CH 01	2412	12.69	13.0
		CH 06	2437	14.79	15.0
		CH 11	2462	13.17	13.5
802.11n (40MHz)	MCS0	CH 03	2422	11.31	11.5
		CH 07	2442	13.35	13.5
		CH 11	2452	11.60	12.0

WLAN(5.2G) - ANT A				
Test Mode	Channel	Frequency (MHz)	Average Power (dBm)	Tune-up power (dBm)
802.11a	36	5180	11.05	11.5
	40	5200	11.64	12.0
	48	5240	12.36	12.5
802.11n (HT20)	36	5180	9.23	9.5
	40	5200	10.09	10.5
	48	5240	9.78	10.0
802.11n (HT40)	38	5190	9.87	10.0
	46	5230	10.91	11.0
802.11ac (VHT80)	42	5210	9.33	9.5

WLAN(5.2G) - ANT B				
Test Mode	Channel	Frequency (MHz)	Average Power (dBm)	Tune-up power (dBm)
802.11a	36	5180	11.03	11.5
	40	5200	11.81	12.0
	48	5240	12.68	13.0
802.11n (HT20)	36	5180	10.36	10.5
	40	5200	9.83	10.0
	48	5240	11.40	11.5
802.11n (HT40)	38	5190	9.04	9.5
	46	5230	10.43	10.5
802.11ac (VHT80)	42	5210	8.73	9.0

WLAN(5.8G) - ANT A				
Test Mode	Channel	Frequency (MHz)	Average Power (dBm)	Tune-up power (dBm)
802.11a	149	5745	11.19	11.5
	157	5785	11.86	12.0
	165	5825	11.94	12.0
802.11n (HT20)	149	5745	10.04	10.5
	157	5785	10.94	11.0
	165	5825	10.33	10.5
802.11n (HT40)	151	5755	9.53	10.0

	159	5795	9.32	9.5
802.11ac (VHT80)	155	5775	8.27	8.5

WLAN(5.8G) - ANT B				
Test Mode	Channel	Frequency (MHz)	Average Power (dBm)	Tune-up power (dBm)
802.11a	149	5745	11.51	12.0
	157	5785	11.18	11.5
	165	5825	11.02	11.5
802.11n (HT20)	149	5745	10.58	11.0
	157	5785	10.40	10.5
	165	5825	9.68	10.0
802.11n (HT40)	151	5755	9.71	10.0
	159	5795	9.30	9.5
802.11ac (VHT80)	155	5775	8.56	9.0

Remark:

1. Per KDB 248227 D01 v02r02, For 802.11b DSSS SAR measurements, DSSS SAR procedure applies to fixed exposure test position and initial test position procedure applies to multiple exposure test positions.
2. Per KDB 248227 D01 v02r02, For 802.11b DSSS SAR measurements, when the reported SAR of the highest measured maximum output power channel (see 3.1) for the exposure configuration is ≤ 0.8 W/kg, no further SAR testing is required for 802.11b DSSS in that exposure configuration. When the reported SAR is > 0.8 W/kg, SAR is required for that exposure configuration using the next highest measured output power channel. When any reported SAR is > 1.2 W/kg, SAR is required for the third channel; i.e., all channels require testing.
3. For OFDM modes (802.11g/n), SAR is not required when the highest reported SAR for DSSS is adjusted by the ratio of OFDM to DSSS specified maximum output power and it is ≤ 1.2 W/kg.

9.2 Test Results for Standalone SAR Test

Body SAR

WLAN 2.4GHz –Body SAR Test-ANT A								
Plot No.	Mode	Test Position Body	Freque	Output Power (dBm)	Rated Limit (dBm)	Scaling Factor	SAR1g (W/kg)	Scaled SAR1g (W/kg)
			ncy MHz					
1	802.11b	Horizontal-Up	2437	13.92	14.0	1.019	0.256	0.261
	802.11b	Horizontal-Down	2437	13.92	14.0	1.019	0.239	0.243
	802.11b	Vertical-Back	2437	13.92	14.0	1.019	0.093	0.095
	802.11b	Vertical-Front	2437	13.92	14.0	1.019	0.011	0.011

WLAN 2.4GHz –Body SAR Test-ANT A								
Plot No.	Mode	Test Position Body	Freque	Output Power (dBm)	Rated Limit (dBm)	Scaling Factor	SAR1g (W/kg)	Scaled SAR1g (W/kg)
			ncy MHz					
2	802.11 n (20MHz)	Horizontal-Up	2437	14.13	14.5	1.089	0.213	0.232
	802.11 n (20MHz)	Horizontal-Down	2437	14.13	14.5	1.089	0.188	0.205
	802.11 n (20MHz)	Vertical-Back	2437	14.13	14.5	1.089	0.089	0.097
	802.11 n (20MHz)	Vertical-Front	2437	14.13	14.5	1.089	0.011	0.012

WLAN 2.4GHz –Body SAR Test-ANT B								
Plot No.	Mode	Test Position Body	Freque	Output Power (dBm)	Rated Limit (dBm)	Scaling Factor	SAR1g (W/kg)	Scaled SAR1g (W/kg)
			ncy MHz					
	802.11b	Horizontal-Up	2462	15.07	15.5	1.104	0.404	0.446
3	802.11b	Horizontal-Down	2462	15.07	15.5	1.104	0.483	0.533
	802.11b	Vertical-Back	2462	15.07	15.5	1.104	0.042	0.046
	802.11b	Vertical-Front	2462	15.07	15.5	1.104	0.137	0.151

WLAN 2.4GHz –Body SAR Test-ANT B								
Plot No.	Mode	Test Position Body	Freque	Output Power (dBm)	Rated Limit (dBm)	Scaling Factor	SAR1g (W/kg)	Scaled SAR1g (W/kg)
			ncy MHz					
	802.11g	Horizontal-Up	2437	15.16	15.5	1.081	0.453	0.490
4	802.11g	Horizontal-Down	2437	15.16	15.5	1.081	0.520	0.562
	802.11g	Vertical-Back	2437	15.16	15.5	1.081	0.049	0.053
	802.11g	Vertical-Front	2437	15.16	15.5	1.081	0.154	0.167

WLAN 5.2GHz –Body SAR Test-ANT A								
Plot No.	Mode	Test Position Body	Frequency	Output Power (dBm)	Rated Limit (dBm)	Scaling Factor	SAR1g (W/kg)	Scaled SAR1g (W/kg)
			MHz					
	802.11a	Horizontal-Up	5240	12.36	12.5	1.033	0.520	0.537
	802.11a	Horizontal-Down	5240	12.36	12.5	1.033	0.502	0.518
5	802.11a	Vertical-Back	5240	12.36	12.5	1.033	0.616	0.636
	802.11a	Vertical-Front	5240	12.36	12.5	1.033	0.153	0.158

WLAN 5.8GHz –Body SAR Test-ANT A								
Plot No.	Mode	Test Position Body	Frequency	Output Power (dBm)	Rated Limit (dBm)	Scaling Factor	SAR1g (W/kg)	Scaled SAR1g (W/kg)
			MHz					
	802.11a	Horizontal-Up	5825	11.94	12.0	1.014	0.360	0.365
6	802.11a	Horizontal-Down	5825	11.94	12.0	1.014	0.520	0.527
	802.11a	Vertical-Back	5825	11.94	12.0	1.014	0.140	0.142
	802.11a	Vertical-Front	5825	11.94	12.0	1.014	0.104	0.105

WLAN 5.2GHz –Body SAR Test-ANT B								
Plot No.	Mode	Test Position Body	Frequency	Output Power (dBm)	Rated Limit (dBm)	Scaling Factor	SAR1g (W/kg)	Scaled SAR1g (W/kg)
			MHz					
	802.11a	Horizontal-Up	5240	12.68	13.0	1.076	0.171	0.184
	802.11a	Horizontal-Down	5240	12.68	13.0	1.076	0.193	0.208
	802.11a	Vertical-Back	5240	12.68	13.0	1.076	0.089	0.096
7	802.11a	Vertical-Front	5240	12.68	13.0	1.076	0.227	0.244

WLAN 5.8GHz –Body SAR Test-ANT B								
Plot No.	Mode	Test Position Body	Frequency	Output Power (dBm)	Rated Limit (dBm)	Scaling Factor	SAR1g (W/kg)	Scaled SAR1g (W/kg)
			MHz					
	802.11a	Horizontal-Up	5745	11.51	12.0	1.119	0.164	0.184
8	802.11a	Horizontal-Down	5745	11.51	12.0	1.119	0.191	0.214
	802.11a	Vertical-Back	5745	11.51	12.0	1.119	0.104	0.116
	802.11a	Vertical-Front	5745	11.51	12.0	1.119	0.118	0.132

Remark: Per KDB 447498 D01 v06, if the highest output channel SAR for each exposure position ≤ 0.8 W/kg other channels SAR tests are not necessary.

9.3 Simultaneous Multi-band Transmission SAR Analysis

List of Mode for Simultaneous Multi-band Transmission

No.	Configurations	Body SAR
1	WLAN(A)(Data) + WLAN(B)(Data)	Yes

Body SAR

Position	WLAN A(2.4G) Scaled SAR (W/kg)	WLAN B(2.4G) Scaled SAR (W/kg)	Summed SAR (W/kg)
Horizontal-Up	0.261	0.490	0.751
Horizontal-Down	0.243	0.562	0.805
Vertical-Back	0.097	0.053	0.150
Vertical-Front	0.012	0.167	0.179

Position	WLAN A(5.2G) Scaled SAR (W/kg)	WLAN B(5.2G) Scaled SAR (W/kg)	Summed SAR (W/kg)
Horizontal-Up	0.537	0.184	0.721
Horizontal-Down	0.518	0.208	0.726
Vertical-Back	0.636	0.096	0.732
Vertical-Front	0.158	0.244	0.402

Position	WLAN A(5.8G) Scaled SAR (W/kg)	WLAN B(5.8G) Scaled SAR (W/kg)	Summed SAR (W/kg)
Horizontal-Up	0.365	0.184	0.549
Horizontal-Down	0.527	0.214	0.741
Vertical-Back	0.142	0.116	0.258
Vertical-Front	0.105	0.132	0.237

10. Measurement Uncertainty

10.1 Uncertainty for EUT SAR Test

a	b	c	d	e= f(d,k)	f	g	h= c*f/e	i= c*g/e	k
Uncertainty Component	Sec.	Tol (+- %)	Prob. Dist.	Div.	Ci (1g)	Ci (10g)	1g Ui (+-%)	10g Ui (+-%)	Vi
Measurement System									
Probe calibration	E.2.1	7.0	N	1	1	1	7.00	7.00	∞
Axial Isotropy	E.2.2	2.5	R	$\sqrt{3}$	$(1_{Cp})^{1/2}$	$(1_{Cp})^{1/2}$	1.02	1.02	∞
Hemispherical Isotropy	E.2.2	4.0	R	$\sqrt{3}$	$(Cp)^{1/2}$	$(Cp)^{1/2}$	1.63	1.63	∞
Boundary effect	E.2.3	1.0	R	$\sqrt{3}$	1	1	0.58	0.58	∞
Linearity	E.2.4	5.0	R	$\sqrt{3}$	1	1	2.89	2.89	∞
System detection limits	E.2.5	1.0	R	$\sqrt{3}$	1	1	0.58	0.58	∞
Readout Electronics	E.2.6	0.02	N	1	1	1	0.02	0.02	∞
Reponse Time	E.2.7	3.0	R	$\sqrt{3}$	1	1	1.73	1.73	∞
Integration Time	E.2.8	2.0	R	$\sqrt{3}$	1	1	1.15	1.15	∞
RF ambient Conditions – Noise	E.6.1	3.0	R	$\sqrt{3}$	1	1	1.73	1.73	∞
RF ambient Conditions - Reflections	E.6.1	3.0	R	$\sqrt{3}$	1	1	1.73	1.73	∞
Probe positioner Mechanical Tolerance	E.6.2	2.0	R	$\sqrt{3}$	1	1	1.15	1.15	∞
Probe positioning with respect to Phantom Shell	E.6.3	0.05	R	$\sqrt{3}$	1	1	0.03	0.03	∞
Extrapolation, interpolation and integration Algorithms for Max. SAR Evaluation	E.5	5.0	R	$\sqrt{3}$	1	1	2.89	2.89	∞
Test Sample Related									
Test sample positioning	E.4.2	0.03	N	1	1	1	0.03	0.03	N-1
Device Holder Uncertainty	E.4.1	5.00	N	1	1	1	5.00	5.00	
Output power Variation - SAR drift measurement	E.2.9	12.02	R	$\sqrt{3}$	1	1	6.94	6.94	∞
SAR scaling	E6.5	0.0	R	$\sqrt{3}$	1	1	0.0	0.0	∞
Phantom and Tissue Parameters									
Phantom Uncertainty (Shape and thickness tolerances)	E.3.1	0.05	R	$\sqrt{3}$	1	1	0.03	0.03	∞
Uncertainty in SAR correction for deviations in permittivity and conductivity	E3.2	1.9	R	$\sqrt{3}$	1	0.84	1.10	0.90	∞

Liquid conductivity - deviation from target value	E.3.2	5.00	R	$\sqrt{3}$	0.64	0.43	1.85	1.24	∞
Liquid conductivity - measurement uncertainty	E.3.3	5.00	N	1	0.64	0.43	3.20	2.15	∞
Liquid permittivity - deviation from target value	E.3.2	0.37	R	$\sqrt{3}$	0.6	0.49	0.13	0.10	∞
Liquid permittivity - measurement uncertainty	E.3.3	10.00	N	1	0.6	0.49	6.00	4.90	∞
Combined Standard Uncertainty			RSS				12.98	12.53	
Expanded Uncertainty (95% Confidence interval)			K=2				25.32	24.43	

10.2 Uncertainty for System Performance Check

a	b	c	d	e= f(d,k)	f	g	h= c*f/e	i= c*g/e	k
Uncertainty Component	Sec.	Tol (+- %)	Prob. Dist.	Div.	Ci (1g)	Ci (10g)	1g Ui (+-%)	10g Ui (+-%)	Vi
Measurement System									
Probe calibration	E.2.1	7.0	N	1	1	1	7.00	7.00	∞
Axial Isotropy	E.2.2	2.5	R	$\sqrt{3}$	$(1_{Cp})^{1/2}$	$(1_{Cp})^{1/2}$	1.02	1.02	∞
Hemispherical Isotropy	E.2.2	4.0	R	$\sqrt{3}$	$(Cp)^{1/2}$	$(Cp)^{1/2}$	1.63	1.63	∞
Boundary effect	E.2.3	1.0	R	$\sqrt{3}$	1	1	0.58	0.58	∞
Linearity	E.2.4	5.0	R	$\sqrt{3}$	1	1	2.89	2.89	∞
System detection limits	E.2.5	1.0	R	$\sqrt{3}$	1	1	0.58	0.58	∞
Modulation response	E.2.5	0	R	$\sqrt{3}$	0	0	0.0	0.0	∞
Readout Electronics	E.2.6	0.02	N	1	1	1	0.02	0.02	∞
Reponse Time	E.2.7	3.0	R	$\sqrt{3}$	1	1	1.73	1.73	∞
Integration Time	E.2.8	2.0	R	$\sqrt{3}$	1	1	1.15	1.15	∞
RF ambient Conditions – Noise	E.6.1	3.0	R	$\sqrt{3}$	1	1	1.73	1.73	∞
RF ambient Conditions - Reflections	E.6.1	3.0	R	$\sqrt{3}$	1	1	1.73	1.73	∞
Probe positioner Mechanical Tolerance	E.6.2	2.0	R	$\sqrt{3}$	1	1	1.15	1.15	∞
Probe positioning with respect to Phantom Shell	E.6.3	0.05	R	$\sqrt{3}$	1	1	0.03	0.03	∞
Extrapolation, interpolation and	E.5.2	5.0	R	$\sqrt{3}$	1	1	2.89	2.89	∞

integration Algorithms for Max. SAR Evaluation									
Dipole									
Dipole axis to liquid Distance	8,E.4.2	1.00	N	$\sqrt{3}$	1	1	0.58	0.58	N-1
Input power and SAR drift measurement	8,6.6.2	12.02	R	$\sqrt{3}$	1	1	6.94	6.94	∞
Deviation of experimental dipole from numerical dipole	E.6.4	5.5	R	$\sqrt{3}$	1	1	3.20	3.20	∞
Phantom and Tissue Parameters									
Phantom Uncertainty (Shape and thickness tolerances)	E.3.1	0.05	R	$\sqrt{3}$	1	1	0.03	0.03	∞
Uncertainty in SAR correction for deviations in permittivity and conductivity	E3.2	2.0	R	$\sqrt{3}$	1	0.84	1.10	1.10	∞
Liquid conductivity - deviation from target value	E.3.2	5.00	R	$\sqrt{3}$	0.64	0.43	1.85	1.24	
Liquid conductivity - measurement uncertainty	E.3.3	5.00	N	1	0.64	0.43	3.20	2.15	
Liquid permittivity - deviation from target value	E.3.2	0.37	R	$\sqrt{3}$	0.6	0.49	0.13	0.10	
Liquid permittivity - measurement uncertainty	E.3.3	10.00	N	1	0.6	0.49	6.00	4.90	M
Combined Standard Uncertainty			RSS				12.00	11.50	
Expanded Uncertainty (95% Confidence interval)			K=2				23.39	22.43	

Annex A. Plots of System Performance Check

MEASUREMENT 1

Type: Validation measurement (Fast, 75.00 %)

Measurement duration: 12 minutes 21 seconds

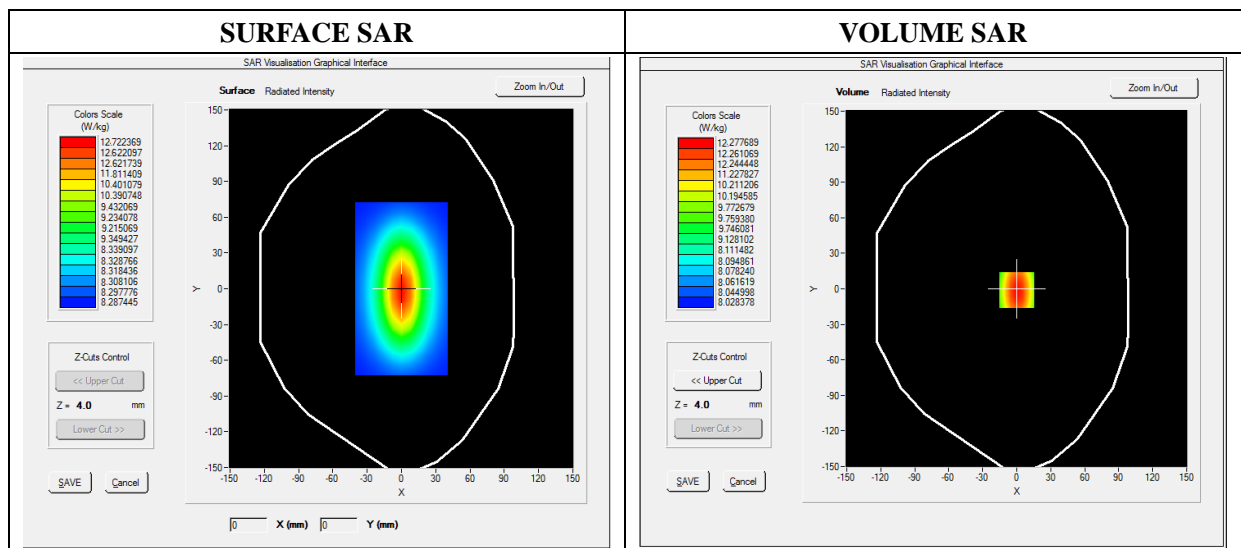
E-field Probe: SSE2 - SN 45/15 EPGO280; ConvF: 2.33; Calibrated: 2020-07-03

A. Experimental conditions

Area Scan	dx=8mm dy=8mm
Phantom	Validation plane
Device Position	Dipole
Band	CW2450
Signal	CW (Crest factor: 1.0)

B. SAR Measurement Results

Frequency (MHz)	2450.000000
Relative Permittivity (real part)	39.862183
Conductivity (S/m)	1.830534
Power Variation (%)	1.510000
Ambient Temperature	22.1
Liquid Temperature	22.1

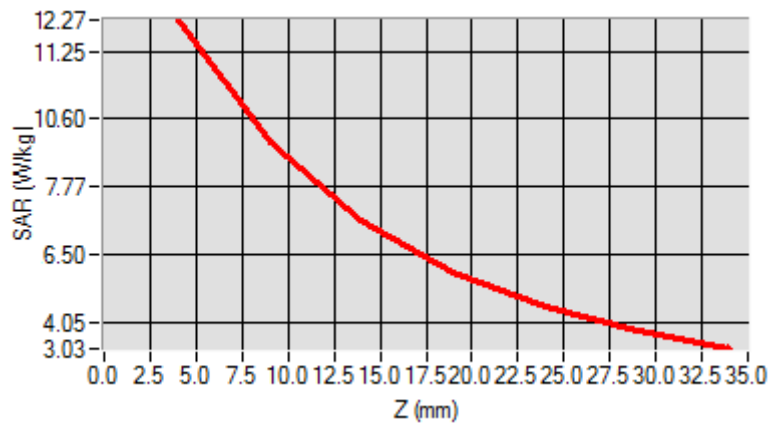


Maximum location: X=0.00, Y=0.00

SAR 10g (W/Kg)	6.026122
SAR 1g (W/Kg)	12.931201

Z Axis Scan

Z (mm)	0.00	4.00	9.00	14.00	19.00	24.00	29.00
SAR (W/Kg)	0.0000	12.2365	10.3321	8.4512	6.4365	5.6123	3.5621



3D screen shot	Hot spot position

MEASUREMENT 2

Type: Validation measurement (Fast, 75.00 %)

Measurement duration: 12 minutes 21 seconds

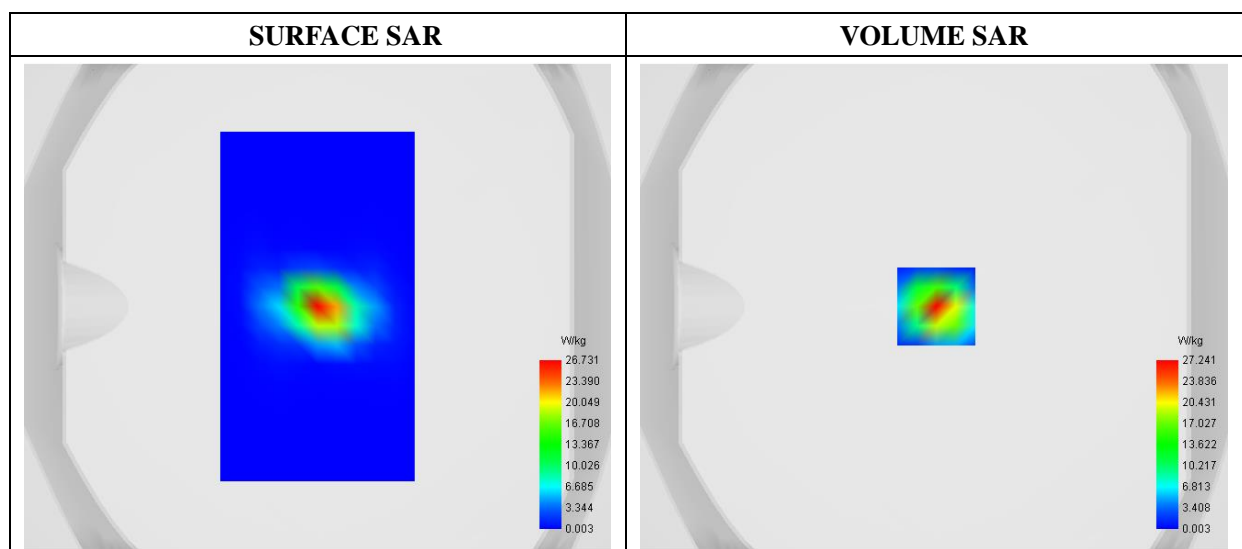
E-field Probe: SN 45/15 EPGO280; ConvF: 2.44; Calibrated: 2020-07-03

A. Experimental conditions

Area Scan	dx=8mm dy=8mm
Phantom	Validation plane
Device Position	Dipole
Band	CW5200
Signal	CW (Crest factor: 1.0)

B. SAR Measurement Results

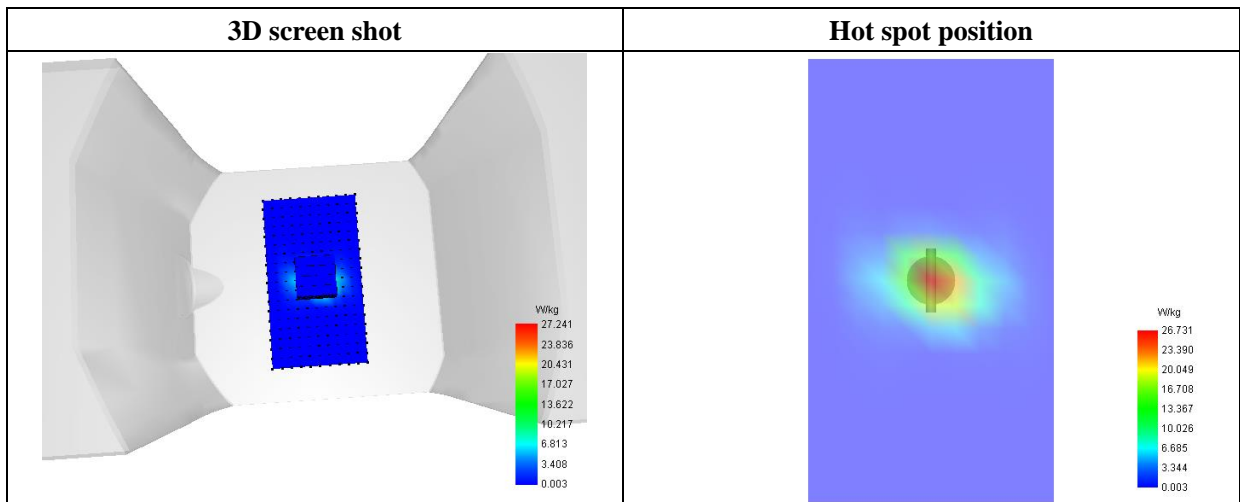
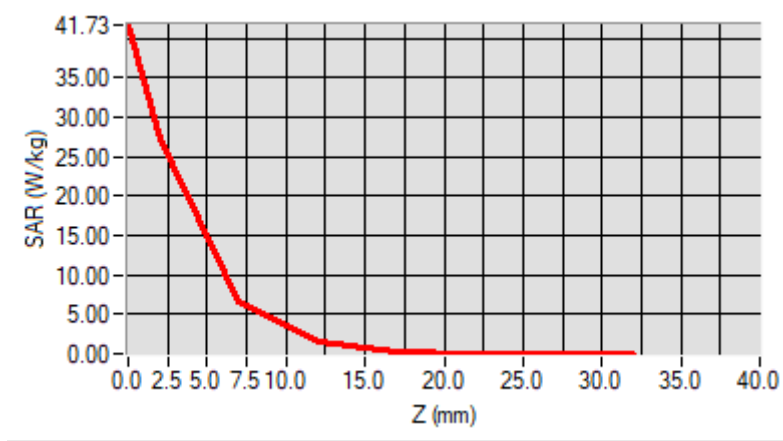
Frequency (MHz)	5200.000000
Relative Permittivity (real part)	36.563804
Conductivity (S/m)	4.721825
Power Variation (%)	-1.730000
Ambient Temperature	22.4
Liquid Temperature	22.4



Maximum location: X=1.00, Y=0.00

SAR 10g (W/Kg)	5.820964
SAR 1g (W/Kg)	16.538175

Z (mm)	0.00	2.00	7.00	12.00	17.00	22.00	27.00
SAR (W/Kg)	41.7264	27.2408	6.5746	1.6234	0.3765	0.0793	0.0129



MEASUREMENT 3

Type: Validation measurement (Fast, 75.00 %)

Measurement duration: 12 minutes 21 seconds

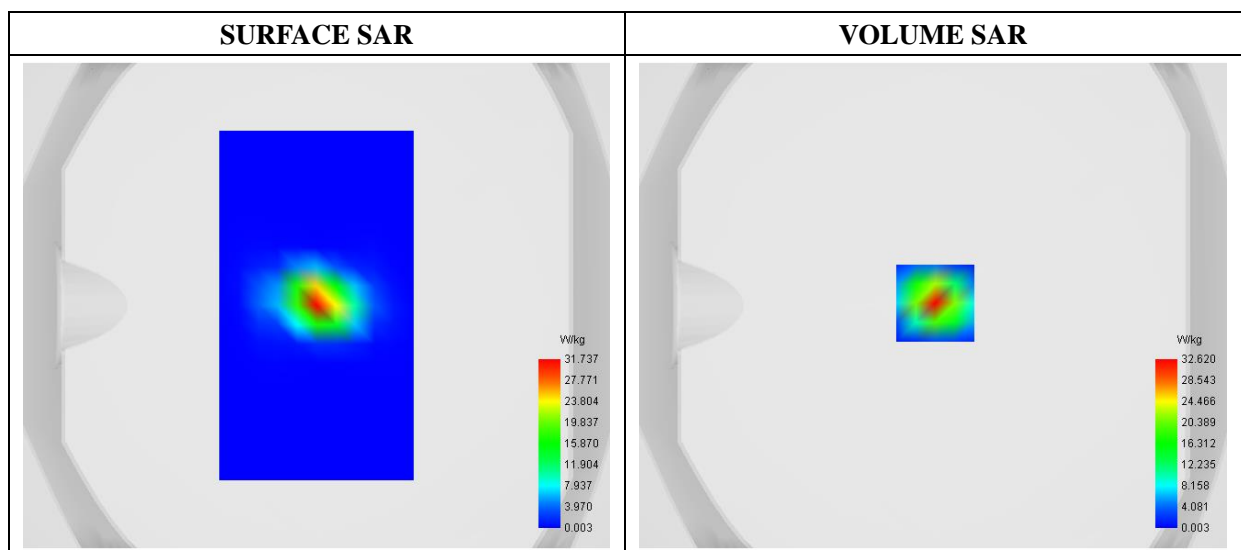
E-field Probe: SN 45/15 EPGO280; ConvF: 2.52; Calibrated: 2020-07-03

A. Experimental conditions

Area Scan	dx=8mm dy=8mm
Zoom Scan	dx=4mm dy=4mm dz=2mm
Phantom	Validation plane
Device Position	Dipole
Band	CW5800
Signal	CW (Crest factor: 1.0)

B. SAR Measurement Results

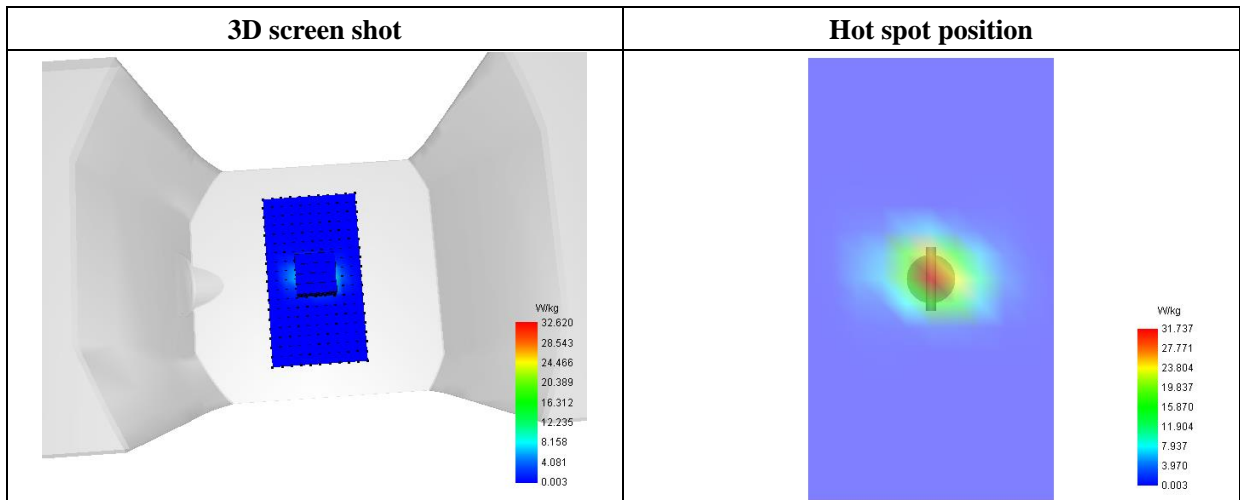
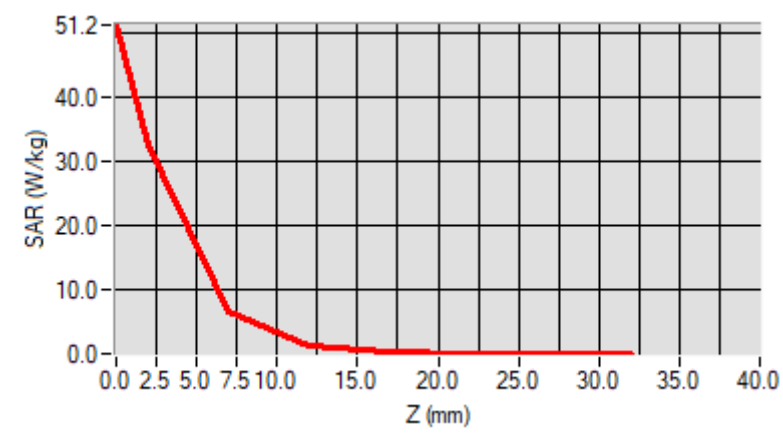
Frequency (MHz)	5800.000000
Relative Permittivity (real part)	35.084615
Conductivity (S/m)	5.353824
Power Variation (%)	-1.050000
Ambient Temperature	22.4
Liquid Temperature	22.4



Maximum location: X=1.00, Y=1.00

SAR 10g (W/Kg)	6.260337
SAR 1g (W/Kg)	18.701835

Z (mm)	0.00	2.00	7.00	12.00	17.00	22.00	27.00
SAR (W/Kg)	51.2061	32.6198	6.6166	1.3486	0.2638	0.0509	0.0050



Annex B. Plots of SAR Measurement

MEASUREMENT 1

Date of measurement: 2021-04-08

Measurement duration: 12 minutes 3 seconds

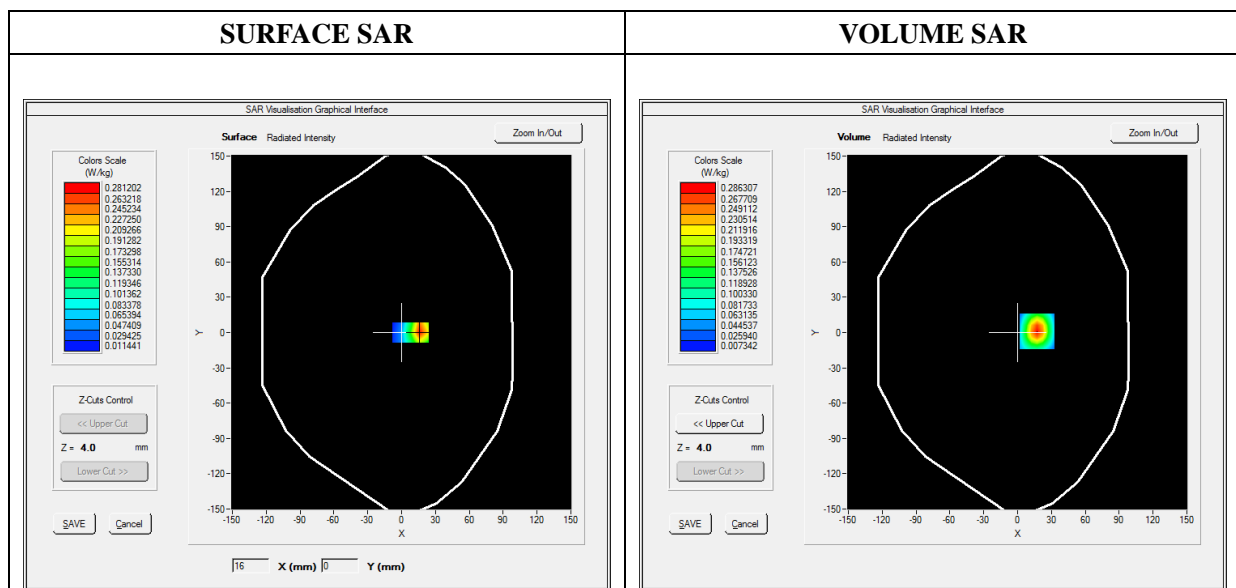
E-field Probe: SSE2 - SN 45/15 EPGO280; ConvF: 2.33; Calibrated: 2020-07-03

A. Experimental conditions

Area Scan	dx=8mm dy=8mm
Zoom Scan	dx=5mm dy=5mm dz=5mm
Phantom	Flat Plane
Device Position	Horizontal-Up
Band	WiFi_802.11b-ANT A
Channels	Middle
Signal	Duty Cycle: 1:1

B. SAR Measurement Results

Frequency (MHz)	2437.000000
Relative Permittivity (real part)	39.940127
Conductivity (S/m)	1.822596
Power Variation (%)	-1.550000
Ambient Temperature	22.1
Liquid Temperature	22.1

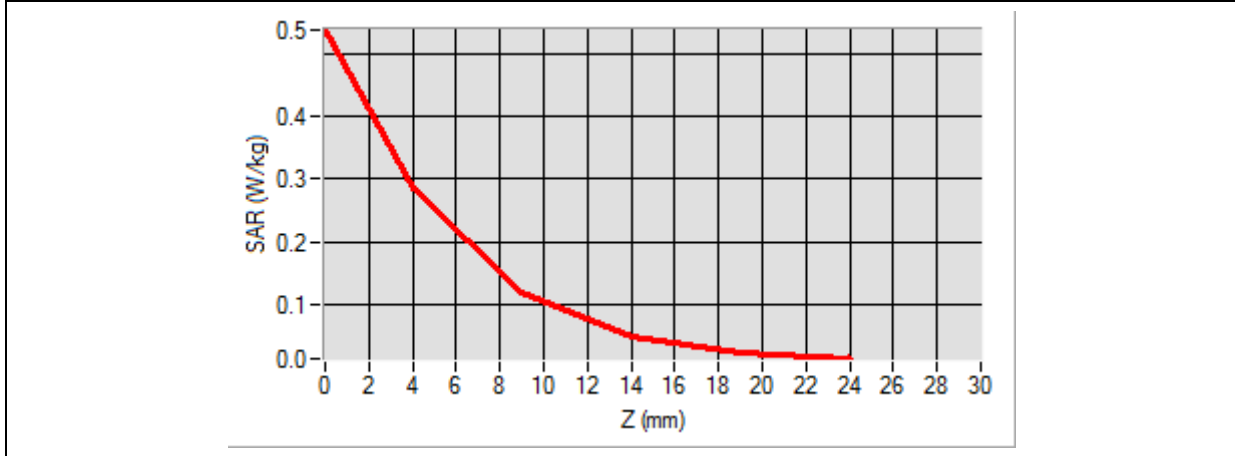


Maximum location: X=17.00, Y=1.00

SAR Peak: 0.54 W/kg

SAR 10g (W/Kg)	0.110877
SAR 1g (W/Kg)	0.256415

Z (mm)	0.00	4.00	9.00	14.00	19.00
SAR (W/Kg)	0.5382	0.2863	0.1195	0.0495	0.0243



3D screen shot	Hot spot position
<p>A 3D perspective view of a grey device with a grid of blue dots on its surface. A small rectangular area is highlighted with a color gradient from green to red, indicating the hot spot location.</p>	<p>A horizontal color gradient bar showing a transition from green on the left to red on the right, representing the intensity of the hot spot.</p>

MEASUREMENT 2

Date of measurement: 2021-04-08

Measurement duration: 12 minutes 3 seconds

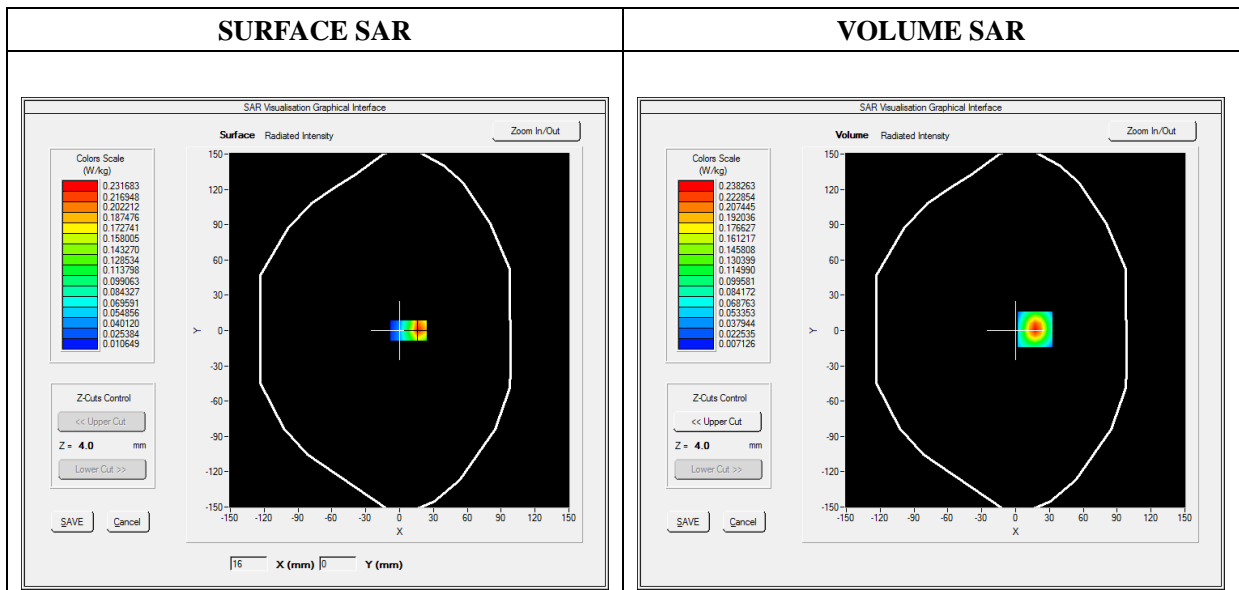
E-field Probe: SSE2 - SN 45/15 EPGO280; ConvF: 2.33; Calibrated: 2020-07-03

A. Experimental conditions

Area Scan	dx=8mm dy=8mm
Zoom Scan	dx=5mm dy=5mm dz=5mm
Phantom	Flat Plane
Device Position	Horizontal-Up
Band	WiFi_802.11n20-ANT A
Channels	Middle
Signal	Duty Cycle: 1:1

B. SAR Measurement Results

Frequency (MHz)	2437.000000
Relative Permittivity (real part)	39.940127
Conductivity (S/m)	1.822596
Power Variation (%)	-1.680000
Ambient Temperature	22.1
Liquid Temperature	22.1

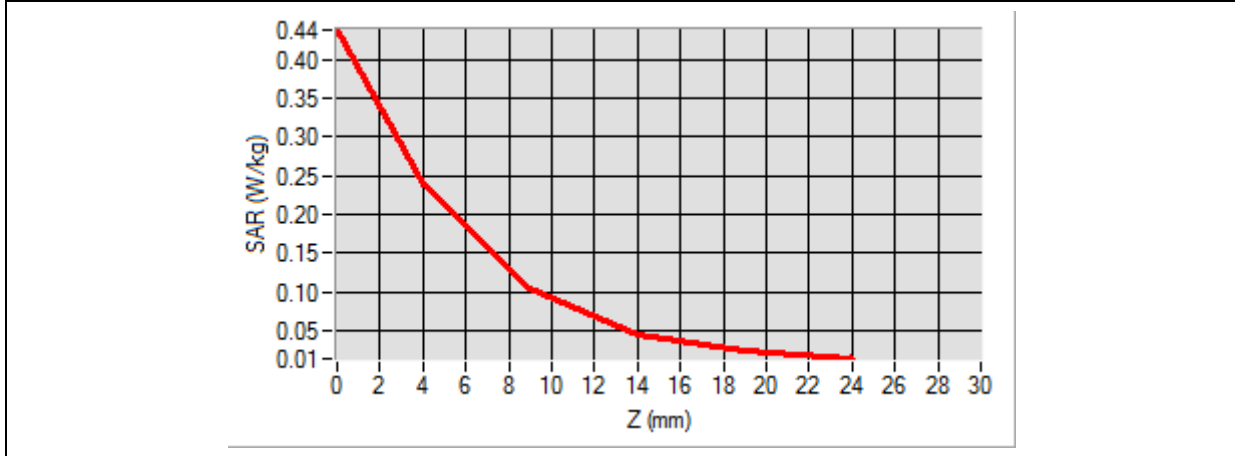


Maximum location: X=17.00, Y=1.00

SAR Peak: 0.44 W/kg

SAR 10g (W/Kg)	0.094100
SAR 1g (W/Kg)	0.213302

Z (mm)	0.00	4.00	9.00	14.00	19.00
SAR (W/Kg)	0.4376	0.2383	0.1037	0.0452	0.0231



3D screen shot	Hot spot position

MEASUREMENT 3

Date of measurement: 2021-04-08

Measurement duration: 12 minutes 3 seconds

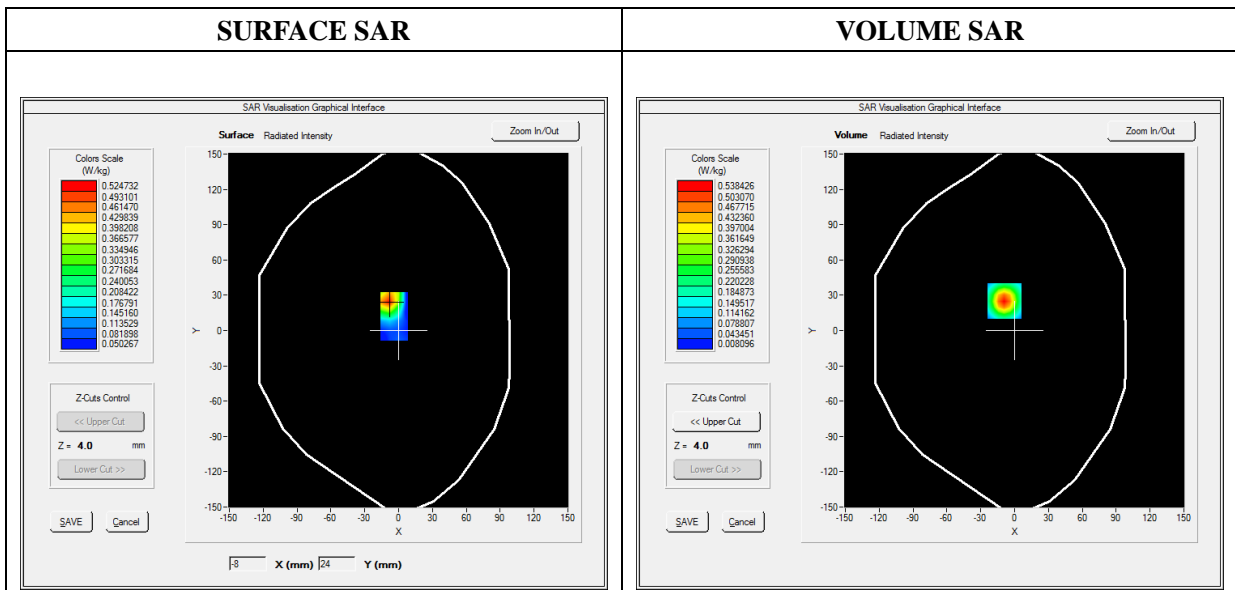
E-field Probe: SSE2 - SN 45/15 EPGO280; ConvF: 2.33; Calibrated: 2020-07-03

A. Experimental conditions

Area Scan	dx=8mm dy=8mm
Zoom Scan	dx=5mm dy=5mm dz=5mm
Phantom	Flat Plane
Device Position	Horizontal- Down
Band	WiFi_802.11b-ANT B
Channels	High
Signal	Duty Cycle: 1:1

B. SAR Measurement Results

Frequency (MHz)	2462.000000
Relative Permittivity (real part)	39.781326
Conductivity (S/m)	1.839228
Power Variation (%)	-0.840000
Ambient Temperature	22.1
Liquid Temperature	22.1

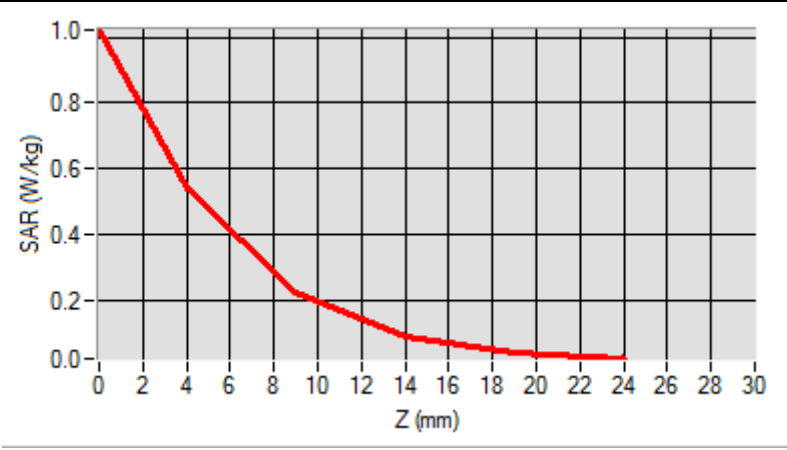


Maximum location: X=-9.00, Y=25.00

SAR Peak: 1.02 W/kg

SAR 10g (W/Kg)	0.209175
SAR 1g (W/Kg)	0.483073

Z (mm)	0.00	4.00	9.00	14.00	19.00
SAR (W/Kg)	1.0223	0.5384	0.2200	0.0877	0.0408



3D screen shot	Hot spot position
<p>A 3D perspective view of a grey device with a grid of blue dots on its surface. A localized area of high SAR is highlighted with a yellow-to-red color gradient, indicating the hot spot position.</p>	<p>A 3D visualization of the hot spot position, showing a color gradient from green (low SAR) to red (high SAR) on a rectangular base, indicating the location of maximum SAR exposure.</p>

MEASUREMENT 4

Date of measurement: 2021-04-08

Measurement duration: 12 minutes 3 seconds

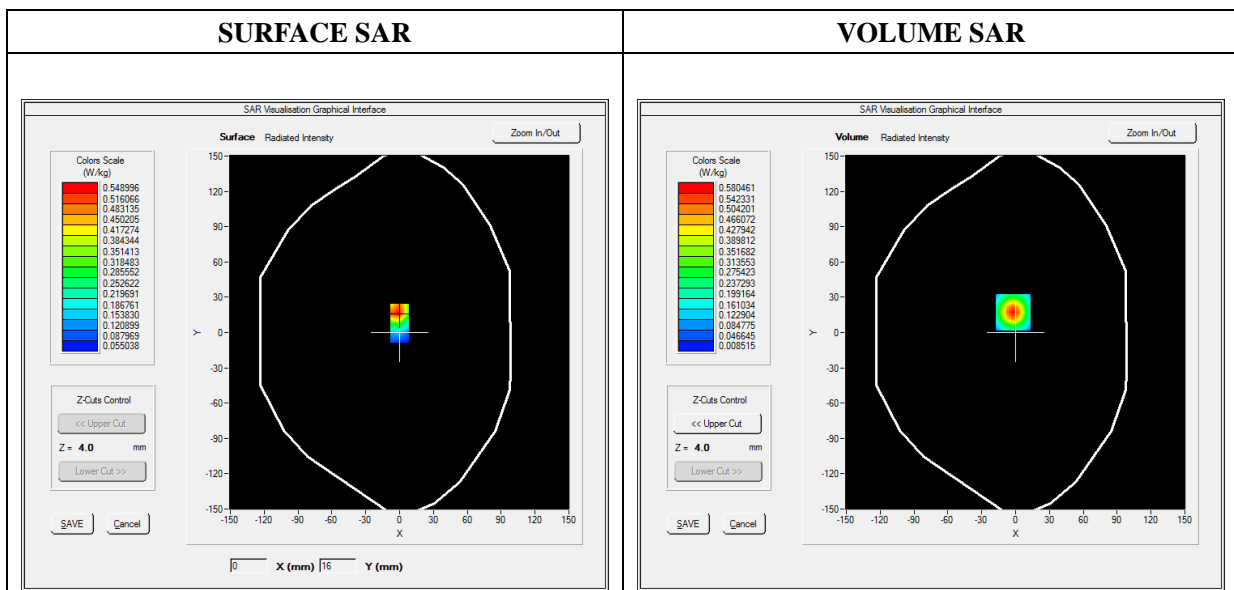
E-field Probe: SSE2 - SN 45/15 EPGO280; ConvF: 2.33; Calibrated: 2020-07-03

A. Experimental conditions

Area Scan	dx=8mm dy=8mm
Zoom Scan	dx=5mm dy=5mm dz=5mm
Phantom	Flat Plane
Device Position	Horizontal- Down
Band	WiFi_802.11g-ANT B
Channels	Middle
Signal	Duty Cycle: 1:1

B. SAR Measurement Results

Frequency (MHz)	2437.000000
Relative Permittivity (real part)	39.940127
Conductivity (S/m)	1.822596
Power Variation (%)	-0.900000
Ambient Temperature	22.1
Liquid Temperature	22.1

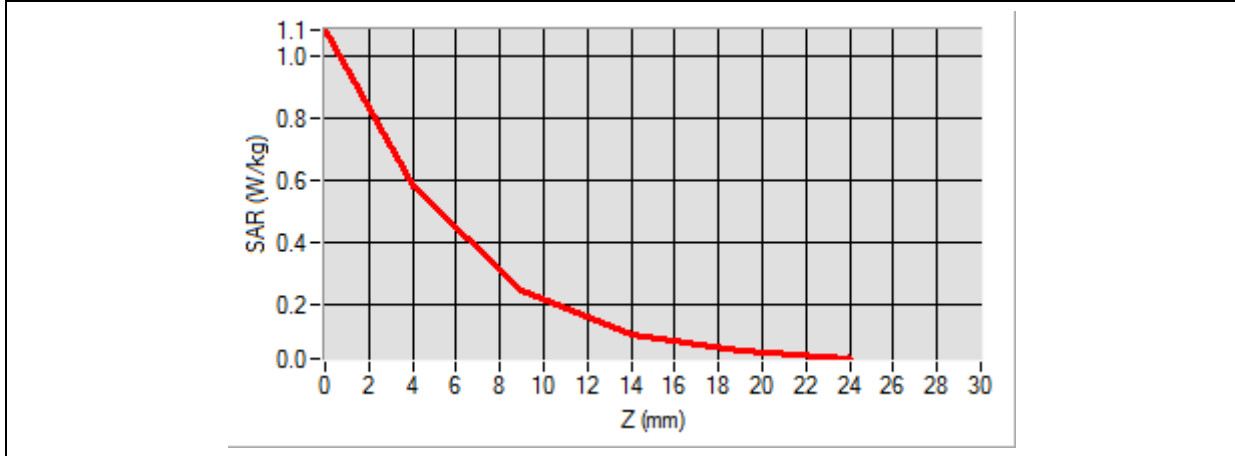


Maximum location: X=-2.00, Y=17.00

SAR Peak: 1.08 W/kg

SAR 10g (W/Kg)	0.227542
SAR 1g (W/Kg)	0.520206

Z (mm)	0.00	4.00	9.00	14.00	19.00
SAR (W/Kg)	1.0834	0.5805	0.2441	0.1001	0.0468



3D screen shot	Hot spot position
<p>A 3D perspective view of a grey device with a grid of blue dots on its surface. A small, multi-colored (red, yellow, green) hot spot is visible on the grid, indicating the location of maximum SAR exposure.</p>	<p>A 2D color-coded visualization of the hot spot, showing a vertical gradient from red at the top to green at the bottom, with yellow in the middle.</p>

MEASUREMENT 5

Date of measurement: 2021-05-08

Measurement duration: 14 minutes 21 seconds

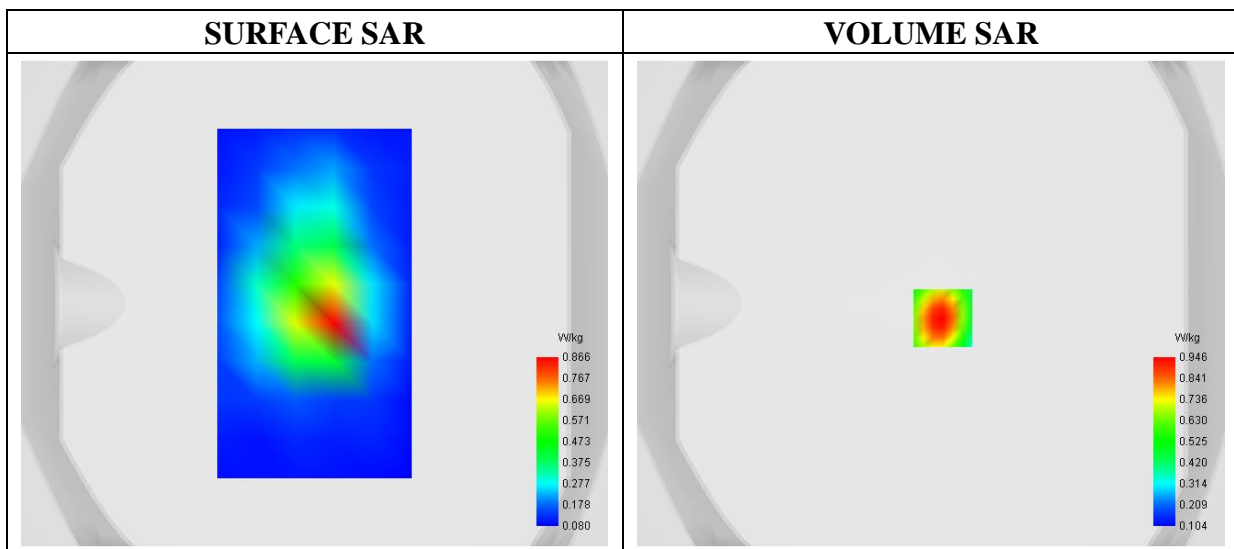
E-field Probe: SSE2 - SN 45/15 EPGO280; ConvF: 2.44; Calibrated: 2020-07-03

A. Experimental conditions

Area Scan	dx=8mm dy=8mm
Zoom Scan	dx=4mm dy=4mm dz=2mm
Phantom	Flat Plane
Device Position	Vertical-Back
Band	WiFi_802.11a-ANT A
Channels	High
Signal	Duty Cycle: 1:1

B. SAR Measurement Results

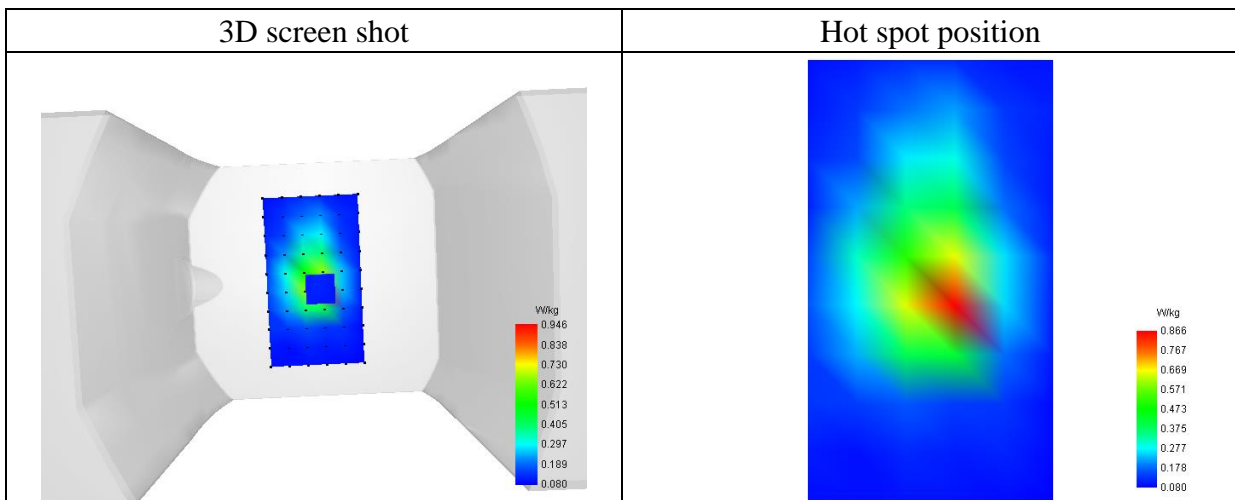
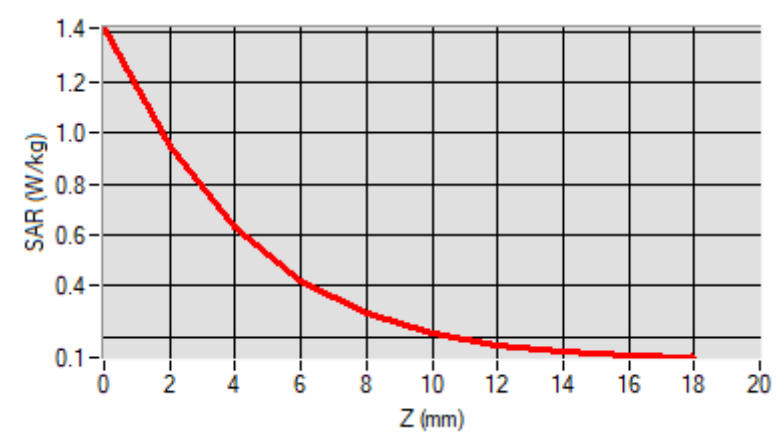
Frequency (MHz)	5240.000000
Relative Permittivity (real part)	36.409598
Conductivity (S/m)	4.751614
Power Variation (%)	1.690000
Ambient Temperature	22.4
Liquid Temperature	22.4



Maximum location: X=5.00, Y=-6.00

SAR 10g (W/Kg)	0.305911
SAR 1g (W/Kg)	0.616274

Z (mm)	0.00	2.00	4.00	6.00	8.00	10.00	12.00	14.00	16.00
SAR (W/Kg)	1.4135	0.9463	0.6280	0.4191	0.2913	0.2146	0.1695	0.1436	0.1285



MEASUREMENT 6

Date of measurement: 2021-05-08

Measurement duration: 14 minutes 21 seconds

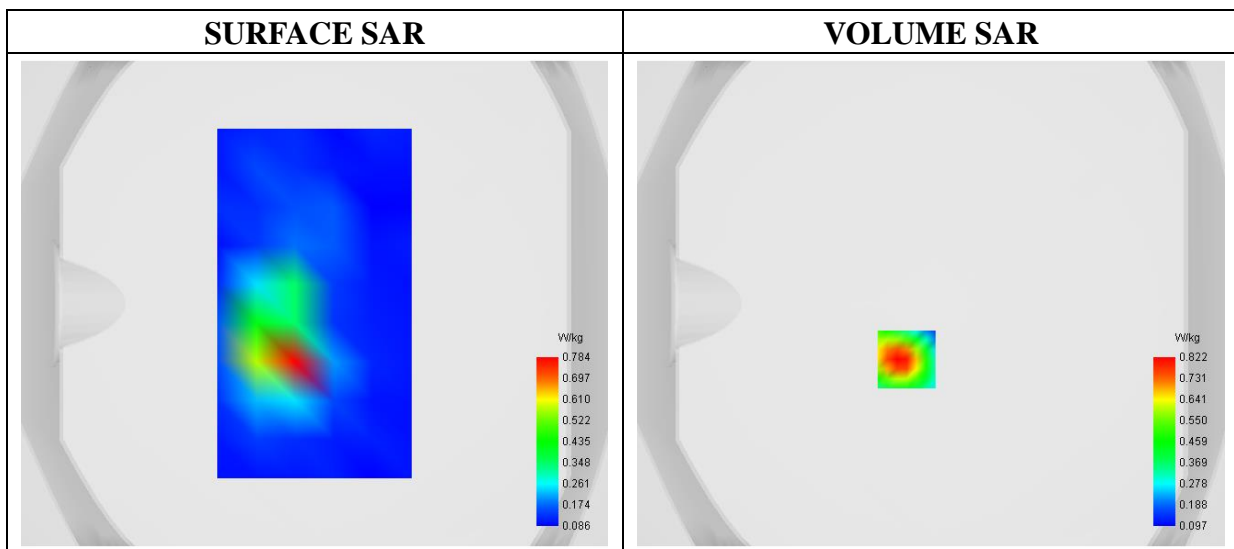
E-field Probe: SSE2 - SN 45/15 EPGO280; ConvF: 2.52; Calibrated: 2020-07-03

A. Experimental conditions

Area Scan	dx=8mm dy=8mm
Zoom Scan	dx=4mm dy=4mm dz=2mm
Phantom	Flat Plane
Device Position	Horizontal-Down
Band	WiFi_802.11a-ANT A
Channels	High
Signal	Duty Cycle: 1:1

B. SAR Measurement Results

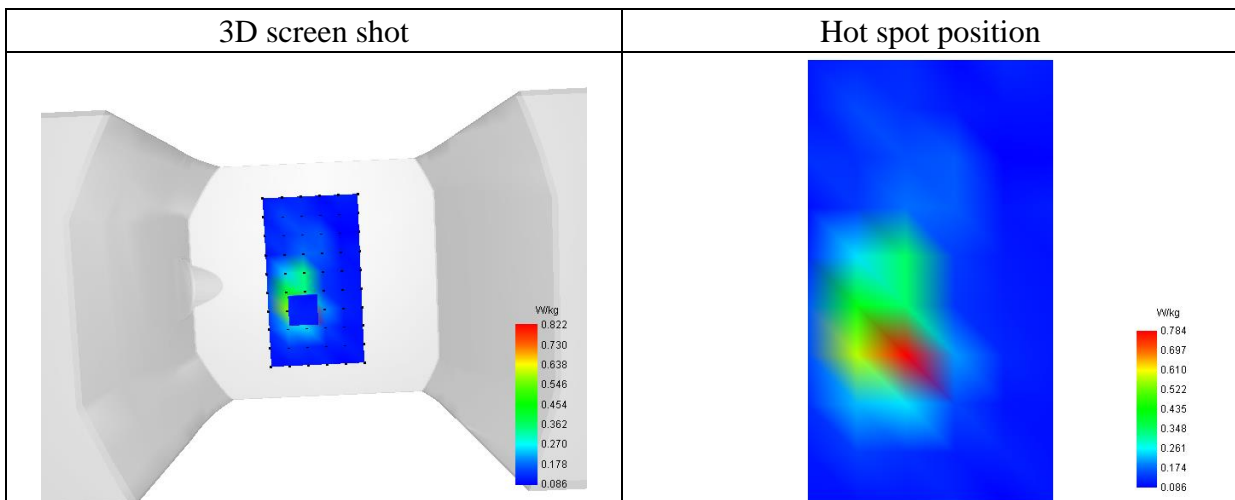
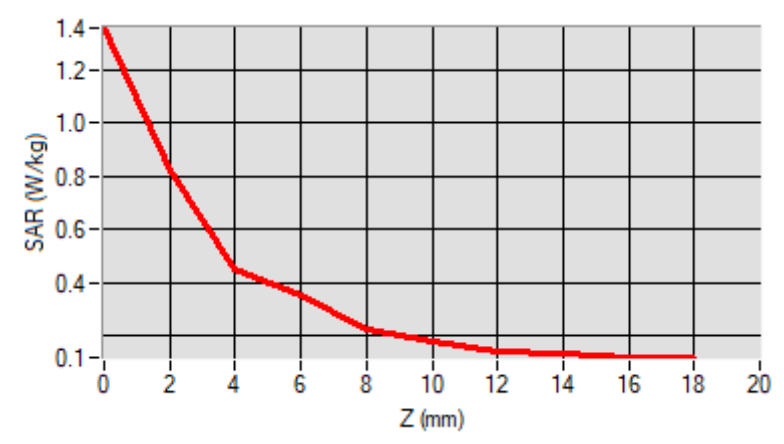
Frequency (MHz)	5825.000000
Relative Permittivity (real part)	34.920316
Conductivity (S/m)	5.372975
Power Variation (%)	-0.880000
Ambient Temperature	22.4
Liquid Temperature	22.4



Maximum location: X=-10.00, Y=-23.00

SAR 10g (W/Kg)	0.255272
SAR 1g (W/Kg)	0.520190

Z (mm)	0.00	2.00	4.00	6.00	8.00	10.00	12.00	14.00	16.00
SAR (W/Kg)	1.3601	0.8219	0.4536	0.3522	0.2198	0.1805	0.1388	0.1283	0.1165



MEASUREMENT 7

Date of measurement: 2021-05-08

Measurement duration: 14 minutes 21 seconds

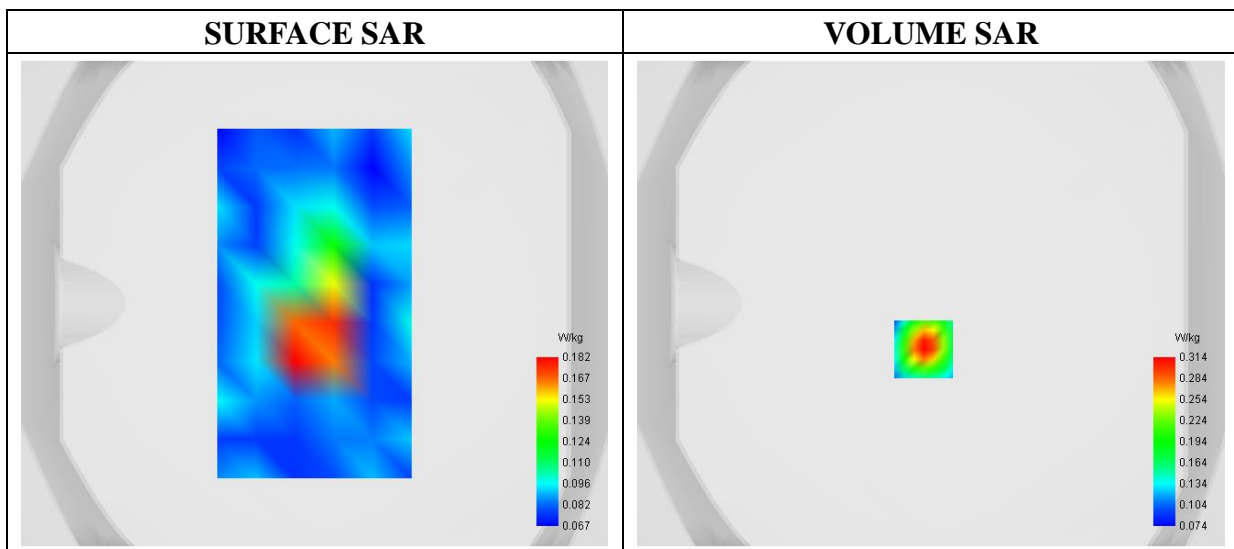
E-field Probe: SSE2 - SN 45/15 EPGO280; ConvF: 2.44; Calibrated: 2020-07-03

A. Experimental conditions

Area Scan	dx=8mm dy=8mm
Zoom Scan	dx=4mm dy=4mm dz=2mm
Phantom	Flat Plane
Device Position	Vertical-Front
Band	WiFi_802.11a-ANT B
Channels	High
Signal	Duty Cycle: 1:1

B. SAR Measurement Results

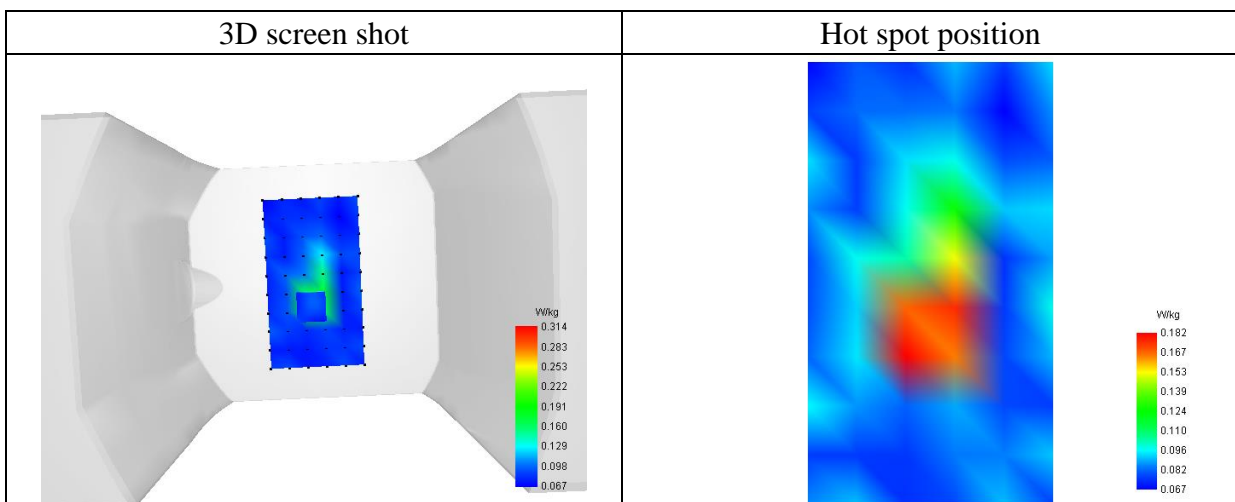
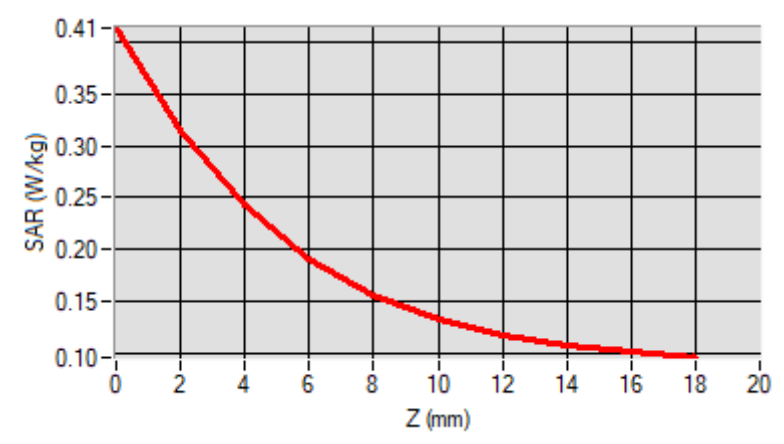
Frequency (MHz)	5240.000000
Relative Permittivity (real part)	36.409598
Conductivity (S/m)	4.751614
Power Variation (%)	1.340000
Ambient Temperature	22.4
Liquid Temperature	22.4



Maximum location: X=-3.00, Y=-19.00

SAR 10g (W/Kg)	0.136497
SAR 1g (W/Kg)	0.227499

Z (mm)	0.00	2.00	4.00	6.00	8.00	10.00	12.00	14.00	16.00
SAR (W/Kg)	0.4139	0.3144	0.2421	0.1904	0.1554	0.1321	0.1169	0.1070	0.1004



MEASUREMENT 8

Date of measurement: 2021-05-08

Measurement duration: 14 minutes 21 seconds

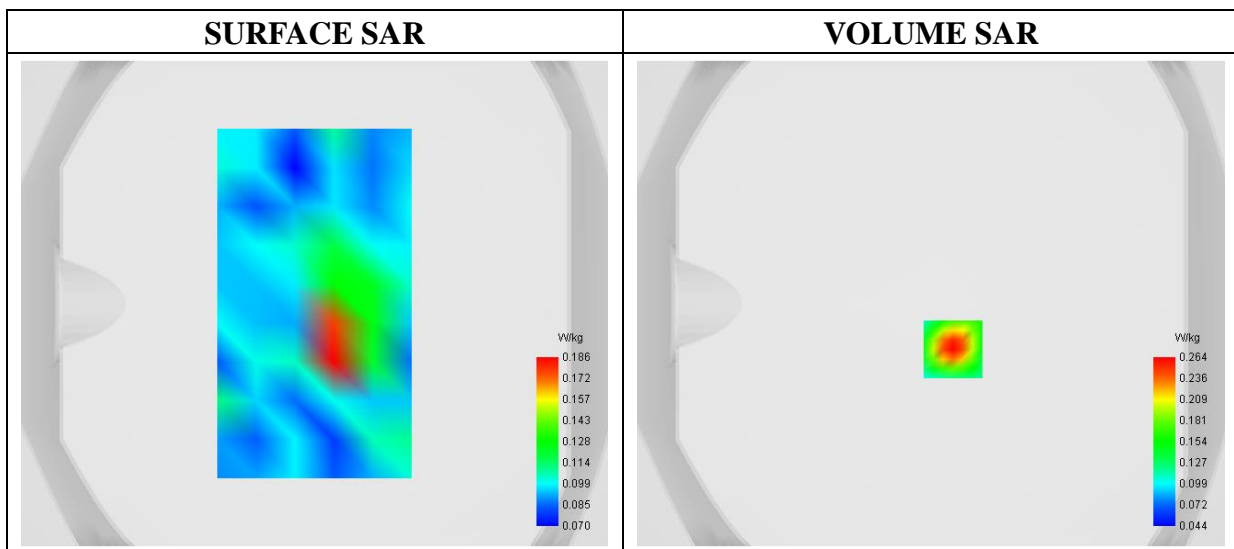
E-field Probe: SSE2 - SN 45/15 EPGO280; ConvF: 2.52; Calibrated: 2020-07-03

A. Experimental conditions

Area Scan	dx=8mm dy=8mm
Zoom Scan	dx=4mm dy=4mm dz=2mm
Phantom	Flat Plane
Device Position	Horizontal-Down
Band	WiFi_802.11a-ANT A
Channels	Low
Signal	Duty Cycle: 1:1

B. SAR Measurement Results

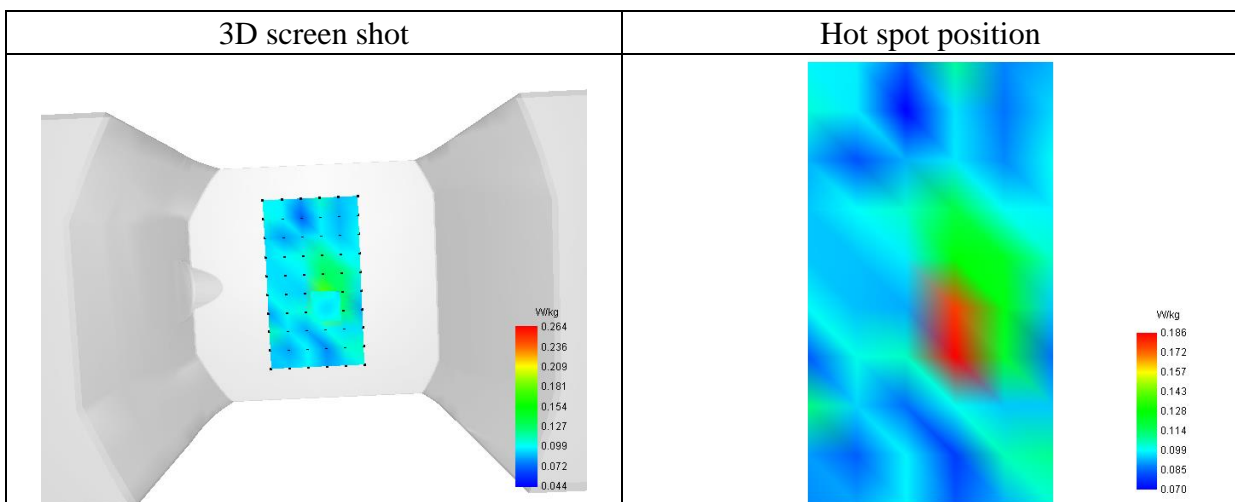
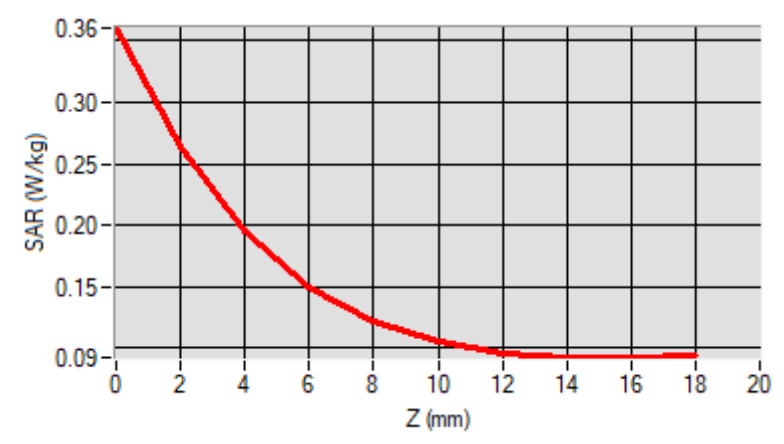
Frequency (MHz)	5745.000000
Relative Permittivity (real part)	35.270164
Conductivity (S/m)	5.306123
Power Variation (%)	-0.880000
Ambient Temperature	22.4
Liquid Temperature	22.4



Maximum location: X=9.00, Y=-19.00

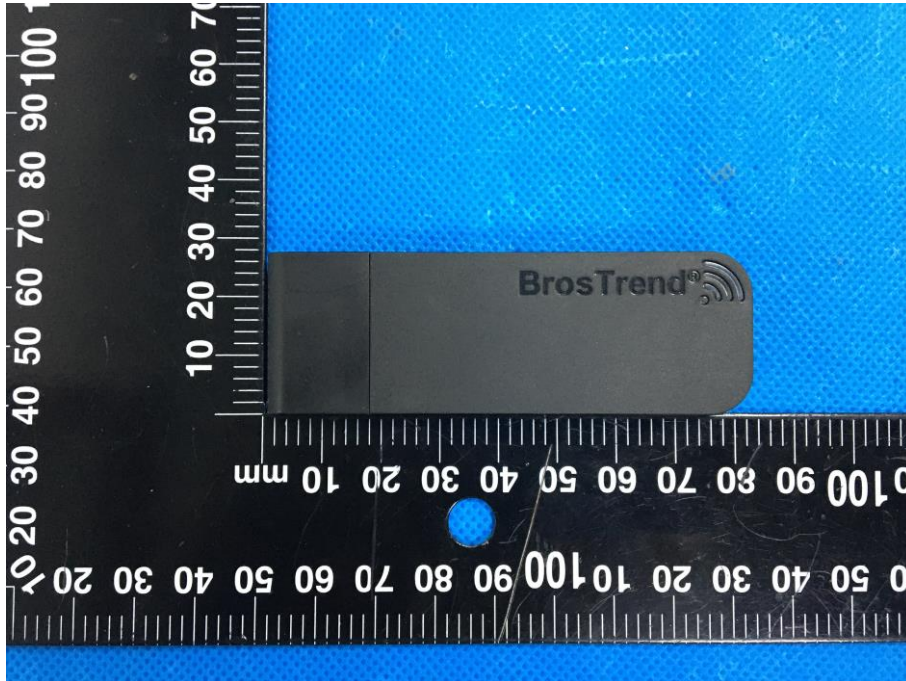
SAR 10g (W/Kg)	0.126359
SAR 1g (W/Kg)	0.191376

Z (mm)	0.00	2.00	4.00	6.00	8.00	10.00	12.00	14.00	16.00
SAR (W/Kg)	0.3603	0.2638	0.1962	0.1504	0.1219	0.1051	0.0962	0.0927	0.0925



Annex C. EUT Photos

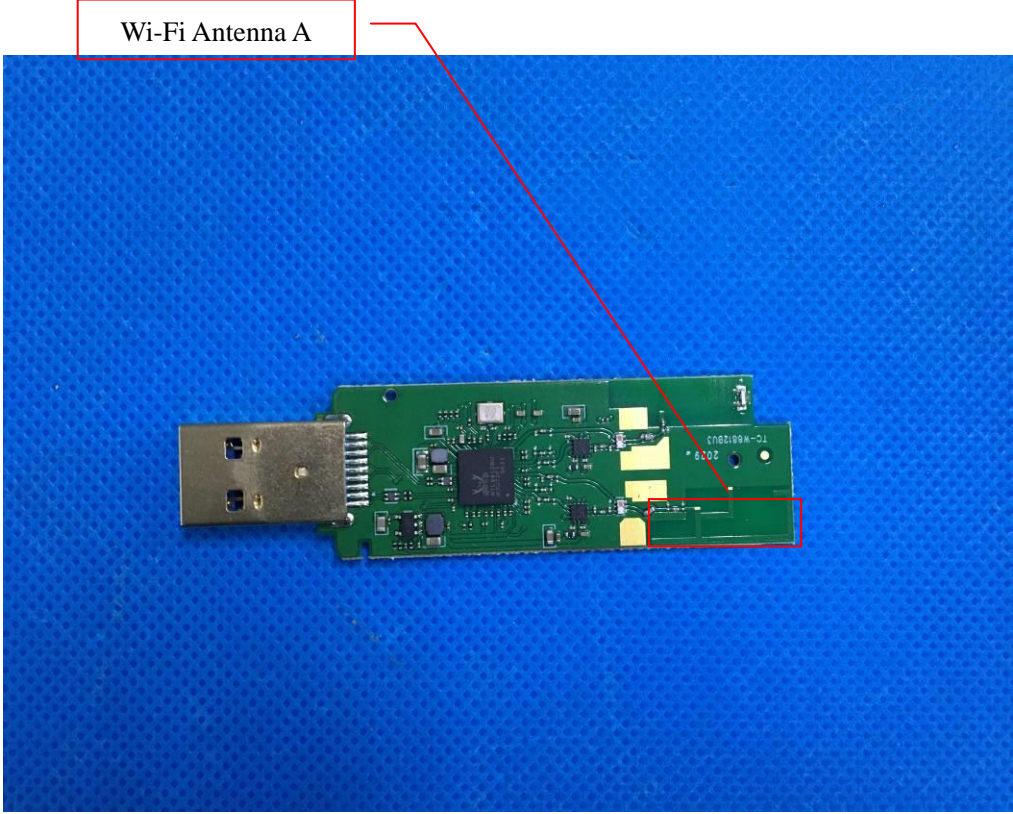
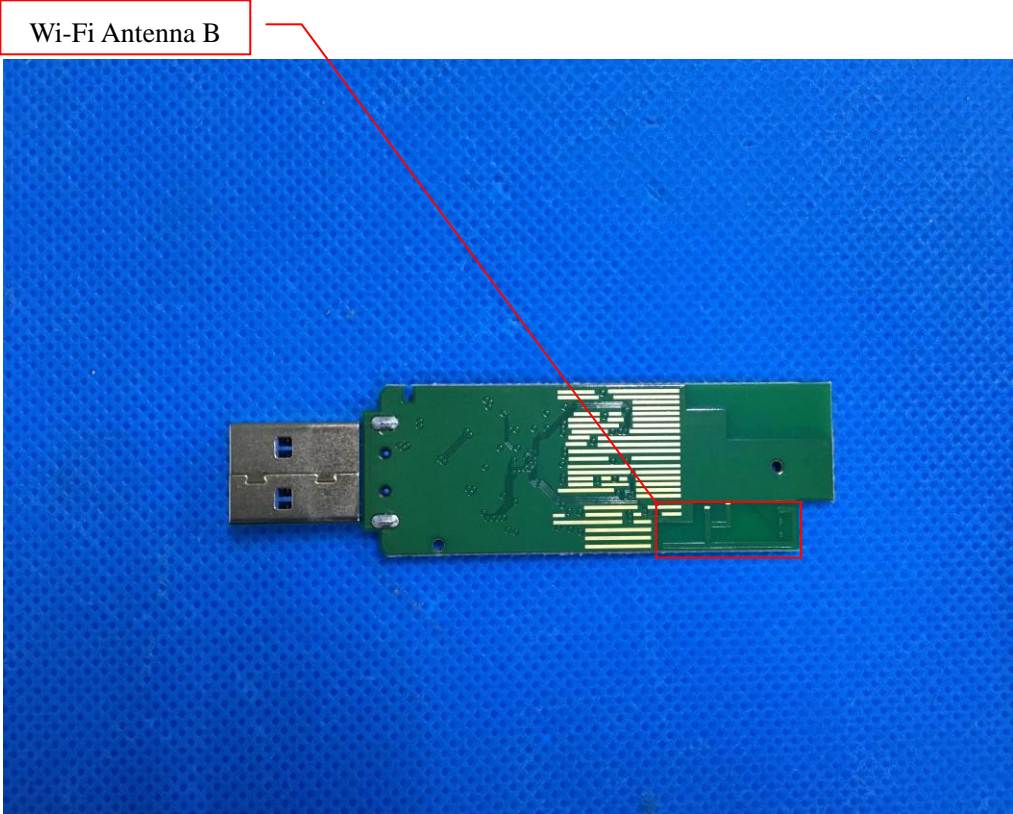
EUT View Front



EUT View Back



Antenna View



Annex D. Test Setup Photos

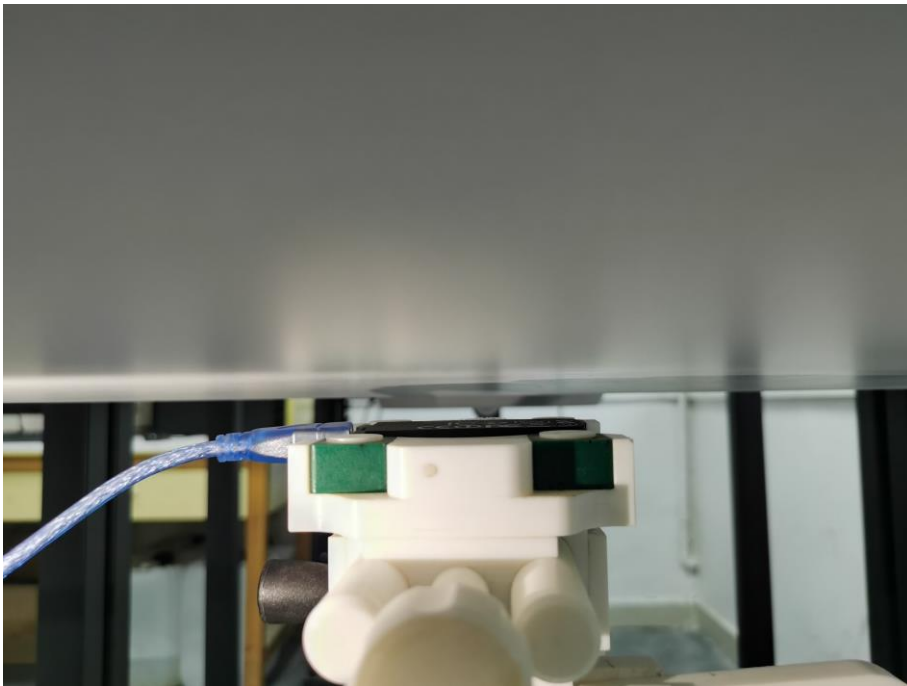
Body mode Exposure Conditions

Test distance: 5mm

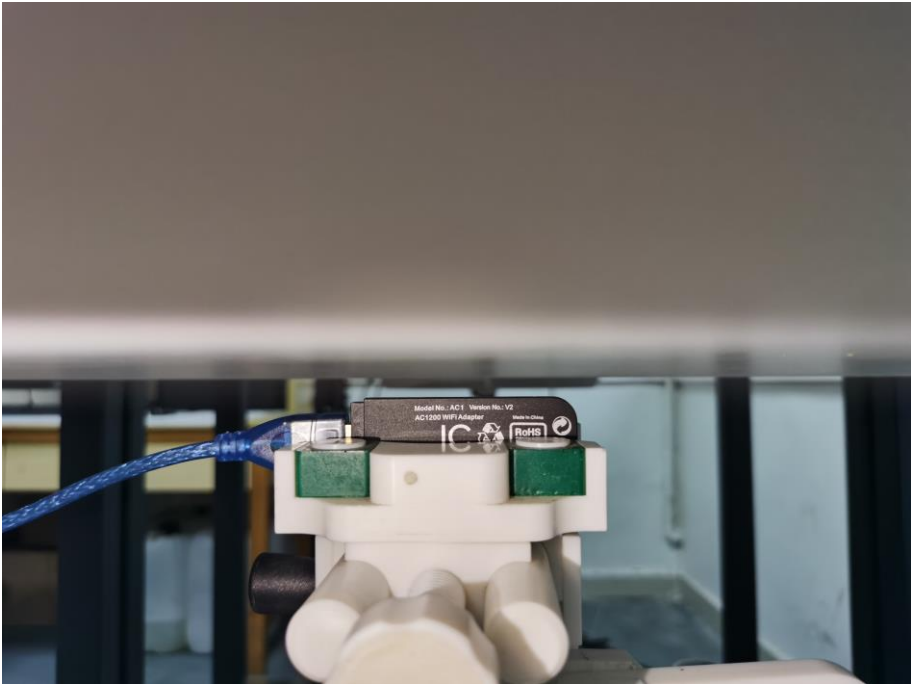
Horizontal-Up



Horizontal-Down



Vertical-Front



Vertical-Back



Annex E. Calibration Certificate

Please refer to the exhibit for the calibration certificate

******* END OF REPORT *******