

Antenna specification

MH007 使用如下 FPC antenna

Right

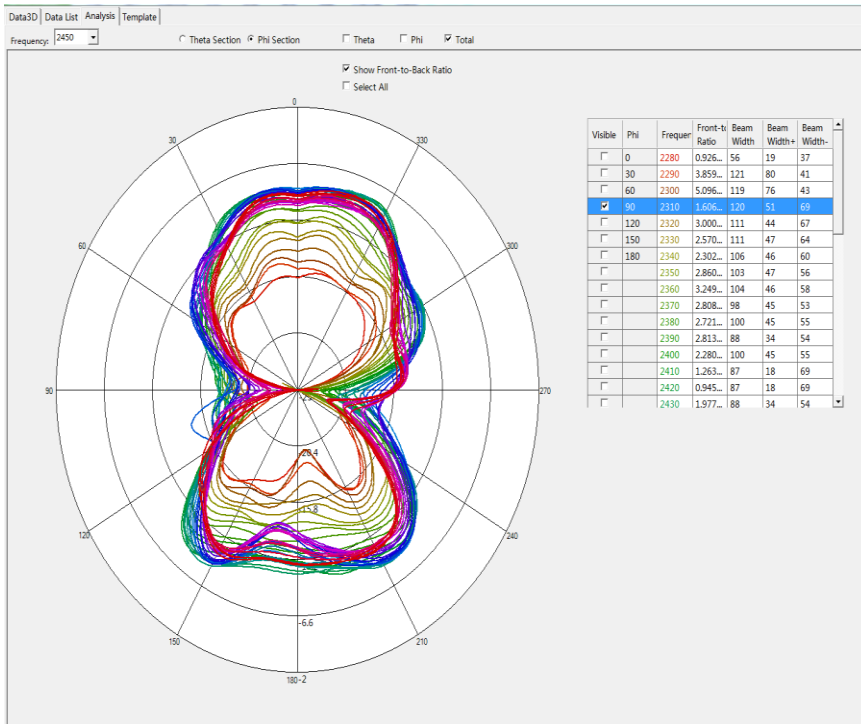
Frequency (MHz)	Efficiency (%)	AVG Gain (dB)	Gain (dBi)
2400	19.98	-6.99	-1.31
2410	21.32	-6.71	-0.9
2420	22.05	-6.57	-0.6
2430	23.32	-6.32	-0.63
2440	24.38	-6.13	-0.23
2450	23.81	-6.23	-0.52
2460	24.14	-6.17	-0.21
2470	23.46	-6.3	0.01
2480	23.54	-6.28	-0.07
2490	22.88	-6.41	-0.28
2500	22.1	-6.56	-0.57
AVG	22.82	-6.42	-0.48

Left

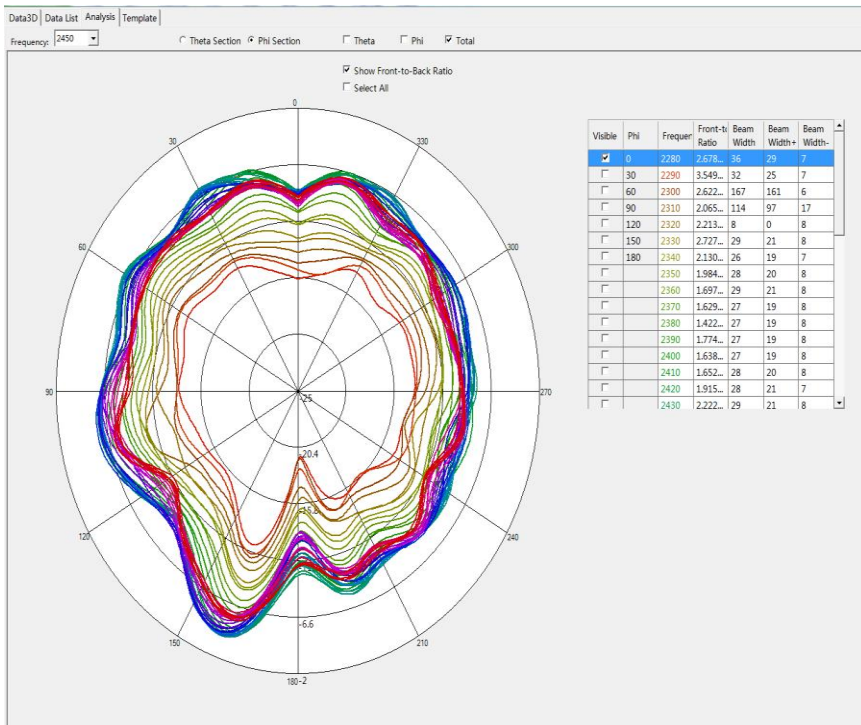
Frequency (MHz)	Efficiency (%)	AVG Gain (dB)	Gain (dBi)
2400	17.36	-7.6	-3.18
2410	18.75	-7.27	-2.81
2420	19.97	-7	-2.45
2430	21.15	-6.75	-2.29
2440	21.83	-6.61	-2.19
2450	20.91	-6.8	-2.24
2460	21.08	-6.76	-2.46
2470	20.24	-6.94	-2.66
2480	19.96	-7	-2.62
2490	19.3	-7.14	-2.88
2500	18.78	-7.26	-3.08
AVG	19.94	-7.01	-2.62

Left

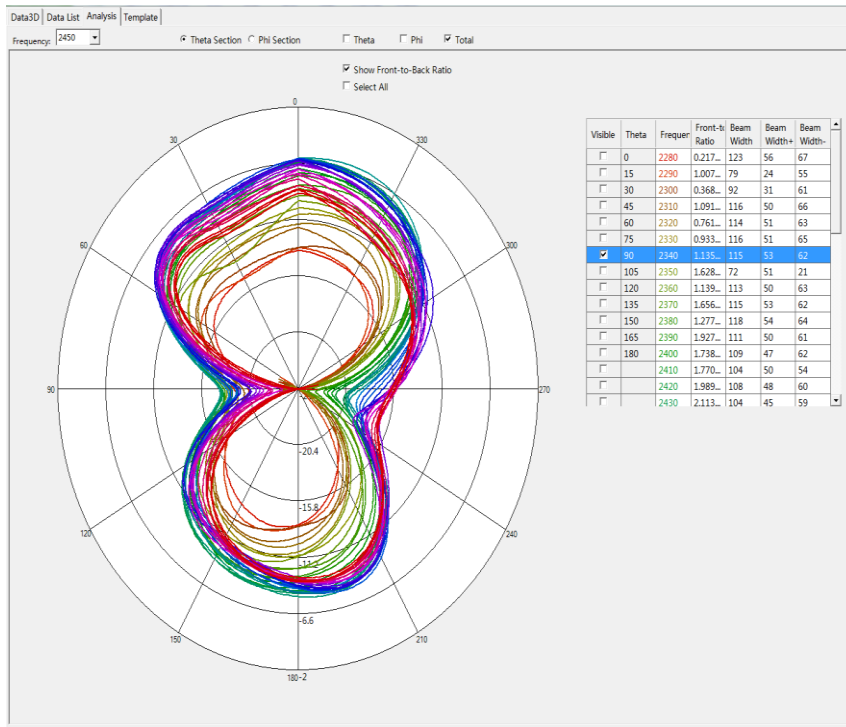
Radiation pattern: $\Phi=90^\circ$



Radiation pattern: $\Phi=0^\circ$

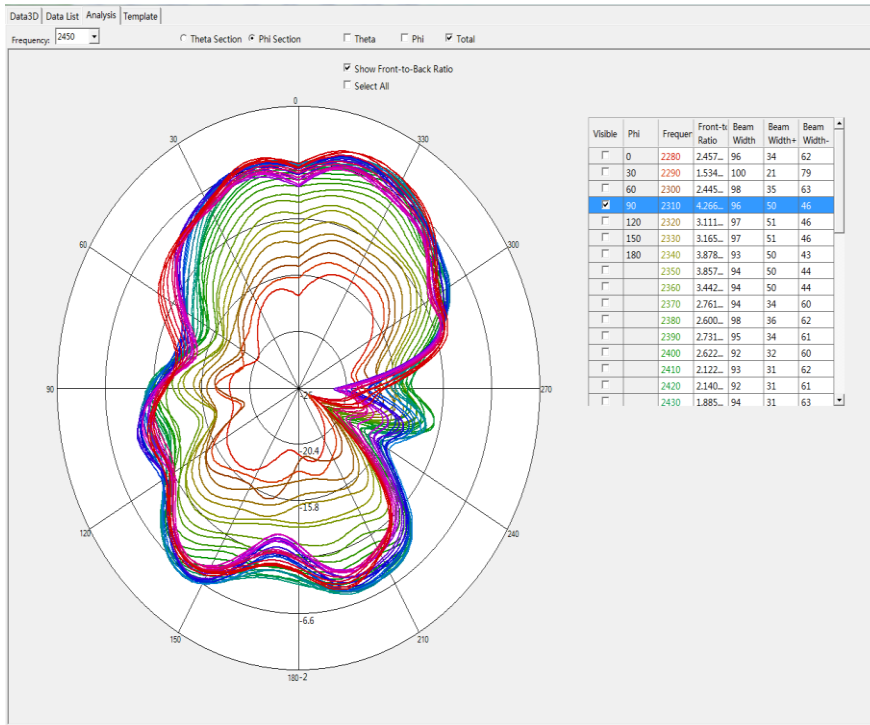


Radiation pattern: theta=90°

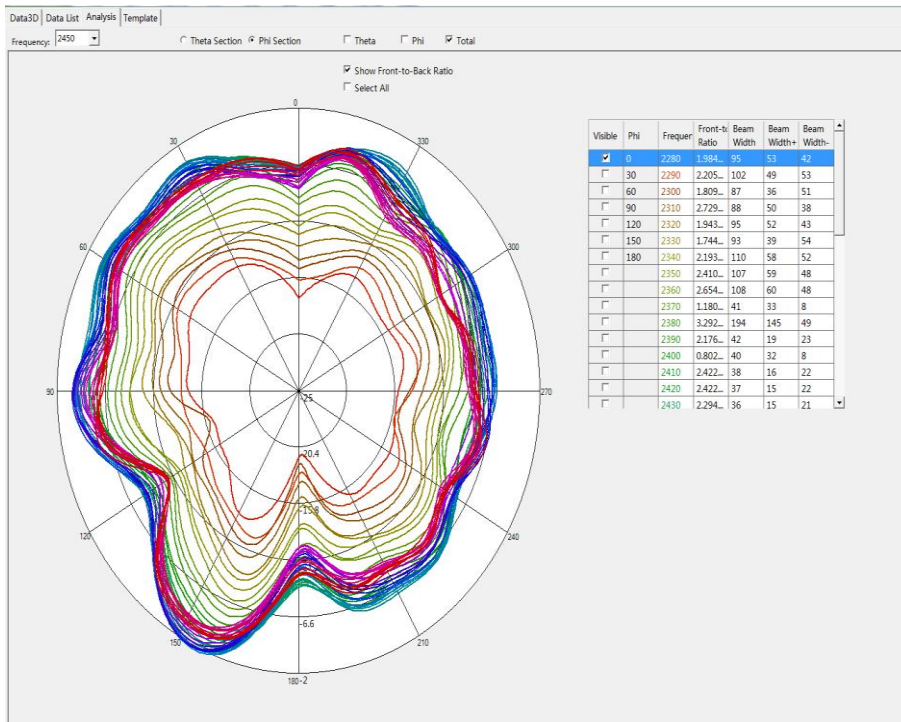


Right

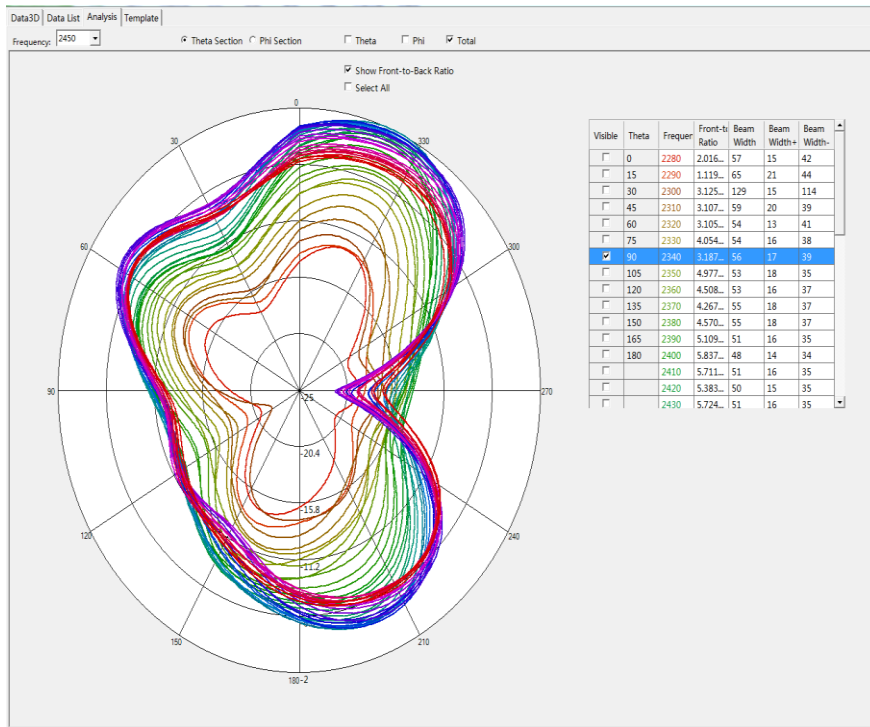
Radiation pattern: Phi=90°



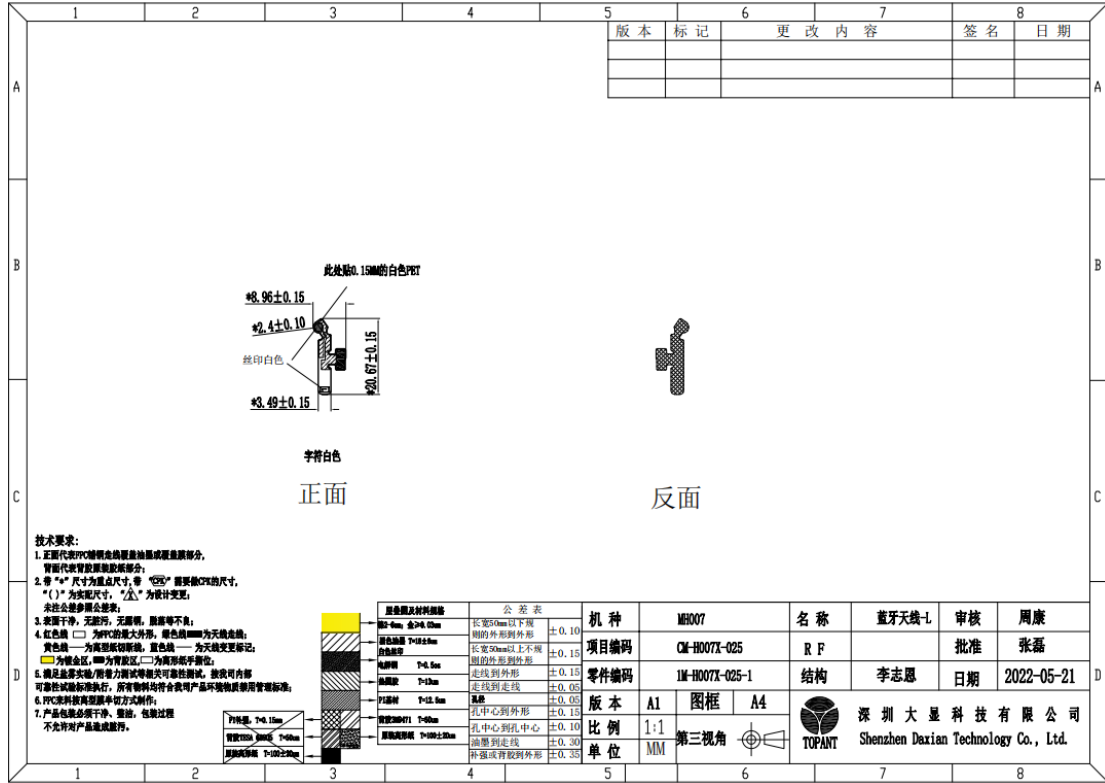
Radiation pattern: Phi=0°



Radiation pattern: theta=90°



Left



Right

