



## Shenzhen Huaxia Testing Technology Co., Ltd.

1F., Block A of Tongsheng Technology Building, Huahui Road, Dalang Street, Longhua District, Shenzhen, China

Telephone: +86-755-26648640

Fax: +86-755-26648637

Website: [www.cqa-cert.com](http://www.cqa-cert.com)

Report Template Version: V04

Report Template Revision Date: 2018-07-06

# TEST REPORT

**Report No.:** CQASZ20210300221E  
**Applicant:** ShenZhen YingBoJingKong Technology Co., Ltd.  
**Address of Applicant:** No. 602, West of 6th Floor, Building 713, PengJi Industrial Zone, Liantang Street, Luohu District, Shenzhen, Guangdong, China  
**Equipment Under Test (EUT):**  
**EUT Name:** Humidity controller  
**Model No.:** IHC-200-WIFI, IHC-230-WIFI, IHC-200  
**Test Model No.:** IHC-200-WIFI  
**Brand Name:** N/A  
**FCC ID:** 2AZDEIHC-200-WIFI  
**Standards:** 47 CFR Part 15, Subpart B, Class B  
**Date of Receipt:** 2021-3-6  
**Date of Test:** 2021-3-6 to 2021-3-13  
**Date of Issue:** 2021-3-24  
**Test Result:** **PASS\***

\*In the configuration tested, the EUT complied with the standards specified above

**Tested By:**

Jun Li

(Jun Li)

**Reviewed By:**

Ares Liu

(Ares Liu)

**Approved By:**

Sheek Luo

(Sheek Luo)



The test report is effective only with both signature and specialized stamp, The result(s) shown in this report refer only to the sample(s) tested. Without written approval of CQA, this report can't be reproduced except in full.

## 1 Version

### Revision History of Report

Report No.	Version	Description	Issue Date
CQASZ20210300221E	Rev.01	Initial report	2021-3-24

## 2 Test Summary

Test Item	Test Requirement	Test method	Result
Radiated Emission	47 CFR Part 15B	ANSI C63.4-2014	PASS
Conducted Emission (150KHz to 30MHz)	47 CFR Part 15B	ANSI C63.4-2014	PASS

Highest frequency generated or used in the device or on which the device operates or tunes (MHz)	Upper frequency of measurement Range (MHz)
Below 1.705	30
1.705 to 108	1000
108 to 500	2000
500 to 1000	5000
Above 1000	5th harmonic of the highest frequency or 40GHz, whichever is lower

**Remark:**

The tested sample(s) and the sample information are provided by the client.

### 3 Contents

	Page
1 VERSION.....	2
2 TEST SUMMARY.....	3
3 CONTENTS.....	4
4 GENERAL INFORMATION.....	5
4.1 CLIENT INFORMATION.....	5
4.2 GENERAL DESCRIPTION OF EUT.....	5
4.3 PRODUCT SPECIFICATION SUBJECTIVE TO THIS STANDARD.....	5
4.4 TEST ENVIRONMENT AND MODE.....	6
4.5 DESCRIPTION OF SUPPORT UNITS.....	6
4.6 TEST LOCATION.....	6
4.7 DEVIATION FROM STANDARDS.....	6
4.8 ABNORMALITIES FROM STANDARD CONDITIONS.....	6
4.9 OTHER INFORMATION REQUESTED BY THE CUSTOMER.....	6
4.10 MEASUREMENT UNCERTAINTY (95% CONFIDENCE LEVELS, K=2).....	7
5 EQUIPMENT LIST.....	8
6 TEST RESULTS AND MEASUREMENT DATA.....	9
6.1 CONDUCTED EMISSIONS.....	9
6.2 RADIATED EMISSION.....	13
APPENDIX 1 PHOTOGRAPHS OF TEST SETUP.....	19
APPENDIX 2 PHOTOGRAPHS OF EUT.....	21

## 4 General Information

### 4.1 Client Information

Applicant:	ShenZhen YingBoJingKong Technology Co., Ltd.
Address of Applicant:	No. 602,West of 6th Floor,Building 713,PengJi Industrial Zone, Liantang Street,Luohu District, Shenzhen,GuangDong,China
Manufacturer:	ShenZhen YingBoJingKong Technology Co., Ltd.
Address of Manufacturer:	No. 602,West of 6th Floor,Building 713,PengJi Industrial Zone, Liantang Street,Luohu District, Shenzhen,GuangDong,China
Factory:	ShenZhen YingBoJingKong Technology Co., Ltd.
Address of Factory:	No. 602,West of 6th Floor,Building 713,PengJi Industrial Zone, Liantang Street,Luohu District, Shenzhen,GuangDong,China

### 4.2 General Description of EUT

Product Name:	Humidity controller
Model No.:	IHC-200-WIFI ,IHC-230-WIFI,IHC-200
Test Model No.:	IHC-200-WIFI
Brand Name:	N/A
Power Supply:	AC120V/60Hz

### 4.3 Product Specification subjective to this standard

Sample Type:	<input type="checkbox"/> Mobile <input type="checkbox"/> Portable <input checked="" type="checkbox"/> Fix Location
Test voltage:	120V 60Hz
Test Mode:	
Normal working	Keep the EUT at Normal working

Note:

Model No.: IHC-200-WIFI ,IHC-230-WIFI,IHC-200

Only the model IHC-200-WIFI was tested, since the electrical circuit design, layout, components used and internal wiring were identical for the above models, with difference being color of appearance and model name.

#### 4.4 Test Environment and Mode

<b>Operating Environment:</b>	
<b>Radiated Emission</b>	
Temperature:	25.5 °C
Humidity:	53 % RH
Atmospheric Pressure:	1009 mbar
<b>Conducted Emission</b>	
Temperature:	25.5 °C
Humidity:	53 % RH
Atmospheric Pressure:	1009 mbar

#### 4.5 Description of Support Units

The EUT has been tested with associated equipment below.

1) support equipment

Description	Manufacturer	Model No.	Certification	Supplied by
/	/	/	/	CQA

2) Cable

Cable No.	Description	Manufacturer	Cable Type/Length	Supplied by
/	/	/	/	/

#### 4.6 Test Location

All tests were performed at:

Shenzhen Huaxia Testing Technology Co., Ltd.,

1F., Block A of Tongsheng Technology Building, Huahui Road, Dalang Street, Longhua District,  
Shenzhen, China

No tests were sub-contracted:

#### 4.7 Deviation from Standards

None.

#### 4.8 Abnormalities from Standard Conditions

None.

#### 4.9 Other Information Requested by the Customer

None.

#### 4.10 Measurement Uncertainty (95% confidence levels, k=2)

No.	Item	Measurement Uncertainty
1	Conduction emission	3.74dB (9kHz to 150kHz)
		3.34dB (150kHz to 30MHz)
2	Radiated emission	5.12dB (Below 1GHz )
		4.60dB (Above 1GHz )
3	Temperature	0.8°C
4	Humidity	2.0%

## 5 Equipment List

Conducted Emissions (150kHz-30MHz)					
Equipment	Manufacturer	Model No	Inventory No.	Cal Date	Cal Due Date
EMI Test Receiver	R&S	ESPI3	CQA-013	2020/9/26	2021/9/25
LISN	R&S	ENV216	CQA-003	2020/10/23	2021/10/22
Coaxial cable (9KHz~300MHz)	CQA	N/A	C021	2020/9/26	2021/9/25

Radiated Emissions					
Equipment	Manufacturer	Model No	Inventory No.	Cal Date	Cal Due Date
Loop antenna	SCHWARZBECK	FMZB 1516	CQA-060	2020/10/21	2021/10/20
Horn Antenna	R&S	BBHA 9170	CQA-088	2020/9/25	2021/9/24
Horn Antenna	R&S	HF906	CQA-012	2020/9/26	2021/9/25
Bilog Antenna	R&S	HL562	CQA-011	2020/9/26	2021/9/25
EMI Test Receiver	R&S	ESR7	CQA-005	2020/10/25	2021/10/24
Spectrum analyzer	R&S	FSU26	CQA-038	2020/10/25	2021/10/24
Preamplifier	MITEQ	AMF-6D- 02001800- 29-20P	CQA-036	2020/10/25	2021/10/24
Coaxial cable (1GHz~40GHz)	CQA	N/A	C007	2020/9/26	2021/9/25
Coaxial cable (9KHz~1GHz)	CQA	N/A	C013	2020/9/26	2021/9/25

	Manufacturer	Software brand
Radiated Emissions test software	Audix	e3
Conducted Emissions test software	Audix	e3



## 6 Test results and Measurement Data

### 6.1 Conducted Emissions

**Test Requirement:** 47 CFR Part 15B  
**Test Method:** ANSI C63.4  
**Test frequency range:** 150kHz to 30MHz  
**Limit:**

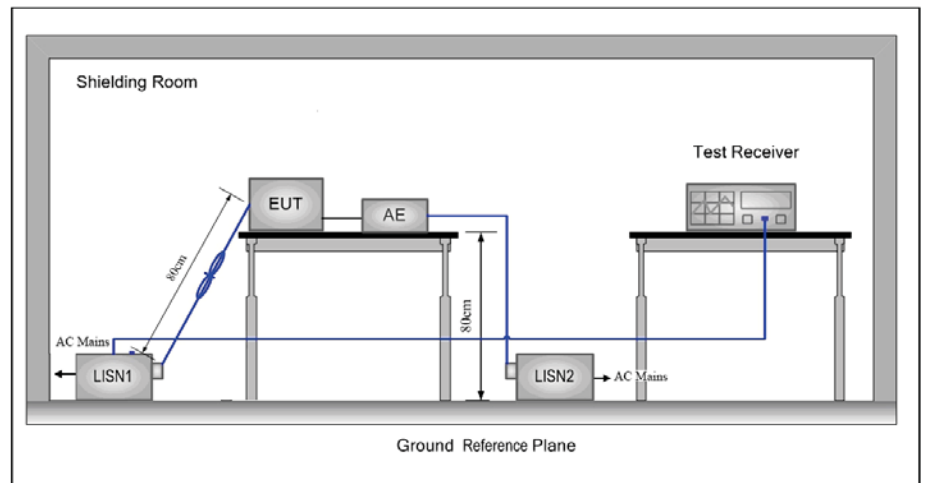
Frequency range (MHz)	Limit (dB $\mu$ V)	
	Quasi-peak	Average
0.15-0.5	66 to 56*	56 to 46*
0.5-5	56	46
5-30	60	50

\* Decreases with the logarithm of the frequency.

**Test Procedure:**

- 1) The mains terminal disturbance voltage test was conducted in a shielded room.
- 2) The EUT was connected to AC power source through a LISN 1 (Line Impedance Stabilization Network) which provides a  $50\Omega/50\mu\text{H} + 5\Omega$  linear impedance. The power cables of all other units of the EUT were connected to a second LISN 2, which was bonded to the ground reference plane in the same way as the LISN 1 for the unit being measured. A multiple socket outlet strip was used to connect multiple power cables to a single LISN provided the rating of the LISN was not exceeded.
- 3) The tabletop EUT was placed upon a non-metallic table 0.8m above the ground reference plane. And for floor-standing arrangement, the EUT was placed on the horizontal ground reference plane,
- 4) The test was performed with a vertical ground reference plane. The rear of the EUT shall be 0.4 m from the vertical ground reference plane. The vertical ground reference plane was bonded to the horizontal ground reference plane. The LISN 1 was placed 0.8 m from the boundary of the unit under test and bonded to a ground reference plane for LISNs mounted on top of the ground reference plane. This distance was between the closest points of the LISN 1 and the EUT. All other units of the EUT and associated equipment was at least 0.8 m from the LISN 2.
- 5) In order to find the maximum emission, the relative positions of equipment and all of the interface cables must be changed according to ANSI C63.4 on conducted measurement.

**Test Setup:**



**Instruments Used:**

Refer to section 5 for details

**Test Mode:**

Normal working

**Test Results:**

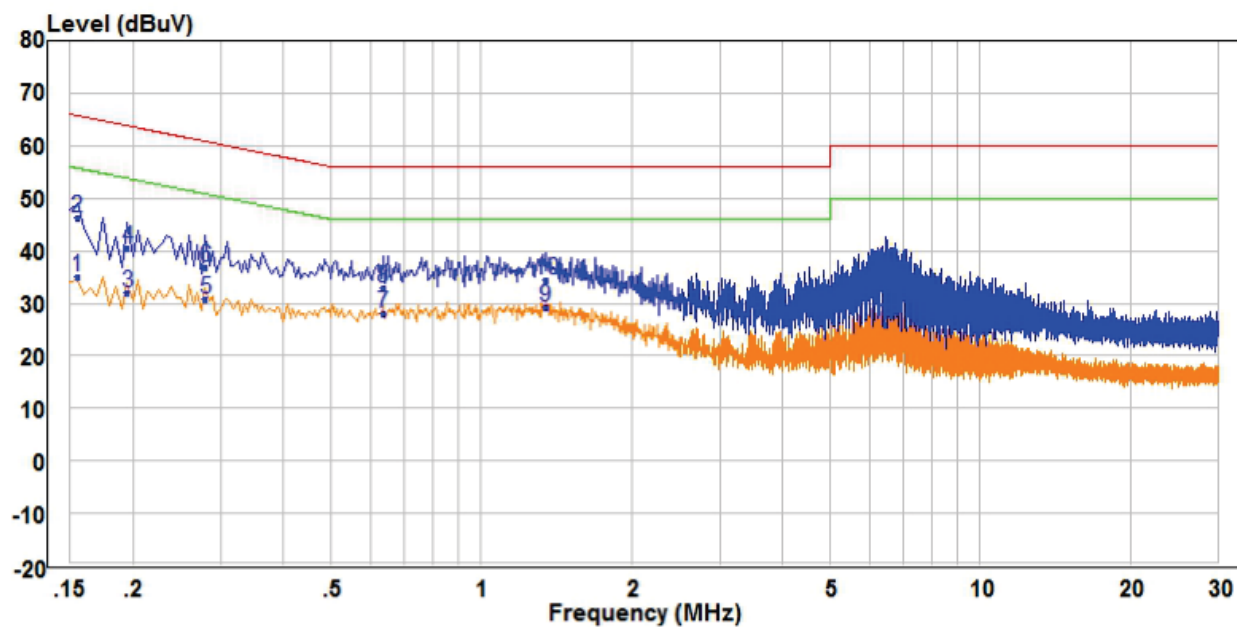
Pass

### Measurement Data

An initial pre-scan was performed on the live and neutral lines with peak detector.

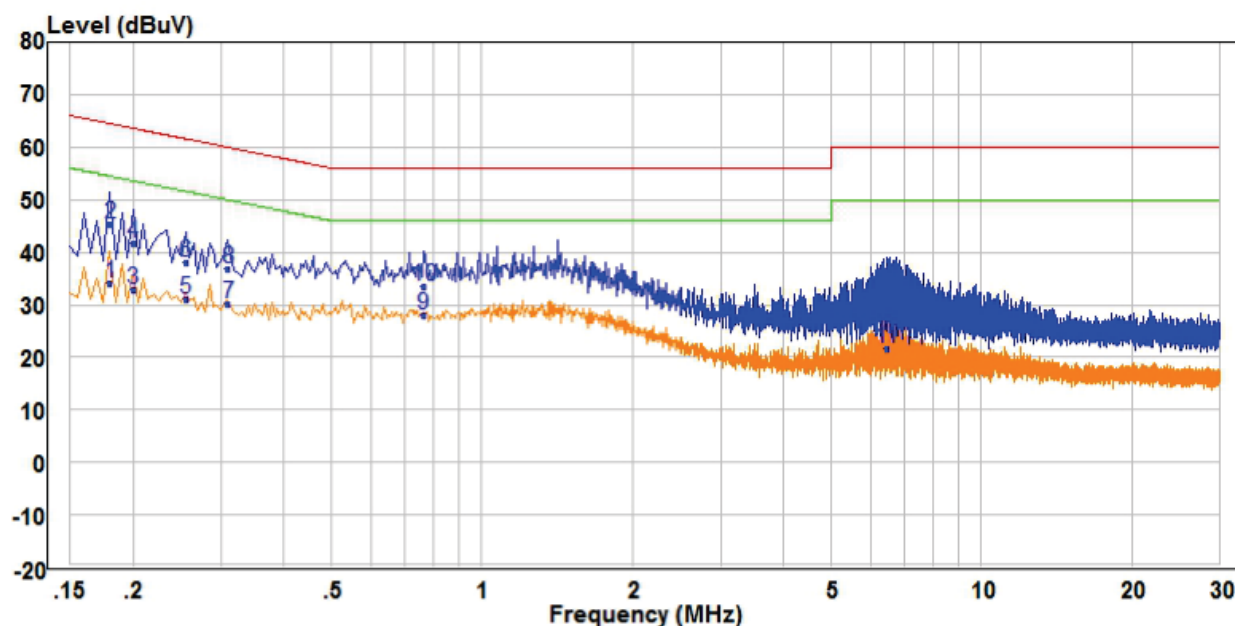
Quasi-Peak and Average measurement were performed at the frequencies with maximized peak emission were detected.

Live Line:



		Read		Limit	Over			
	Freq	Level	Factor	Level	Line	Limit	Remark	Pol/Phase
	MHz	dBuV	dB	dBuV	dBuV	dB		
1	0.155	25.40	9.49	34.89	55.73	-20.84	Average	Line
2	0.155	36.81	9.49	46.30	65.73	-19.43	QP	Line
3	0.195	22.61	9.49	32.10	53.82	-21.72	Average	Line
4	0.195	31.01	9.49	40.50	63.82	-23.32	QP	Line
5	0.280	21.27	9.49	30.76	50.82	-20.06	Average	Line
6	0.280	27.30	9.49	36.79	60.82	-24.03	QP	Line
7	0.635	18.24	9.77	28.01	46.00	-17.99	Average	Line
8	0.635	23.09	9.77	32.86	56.00	-23.14	QP	Line
9	1.345	19.67	9.53	29.20	46.00	-16.80	Average	Line
10	1.345	24.86	9.53	34.39	56.00	-21.61	QP	Line
11	6.470	16.16	9.70	25.86	50.00	-24.14	Average	Line
12	6.470	26.61	9.70	36.31	60.00	-23.69	QP	Line

Neutral Line:



		Read		Limit	Over		
	Freq	Level	Factor	Level	Line	Limit	Remark
	MHz	dBuV	dB	dBuV	dBuV	dB	Pol/Phase
1	0.180	24.59	9.48	34.07	54.49	-20.42	Average
2	QP	0.180	35.85	9.48	45.33	64.49	-19.16 QP
3	0.200	23.41	9.48	32.89	53.61	-20.72	Average
4	0.200	32.14	9.48	41.62	63.61	-21.99	QP
5	0.255	21.50	9.48	30.98	51.59	-20.61	Average
6	0.255	28.46	9.48	37.94	61.59	-23.65	QP
7	0.310	20.77	9.49	30.26	49.97	-19.71	Average
8	0.310	27.41	9.49	36.90	59.97	-23.07	QP
9	PP	0.765	18.18	9.81	27.99	46.00	-18.01 Average
10	0.765	23.56	9.81	33.37	56.00	-22.63	QP
11	6.460	11.90	9.78	21.68	50.00	-28.32	Average
12	6.460	23.32	9.78	33.10	60.00	-26.90	QP

Notes:

1. The following Quasi-Peak and Average measurements were performed on the EUT:
2. Final Test Level = Receiver Reading + LISN Factor + Cable Loss.

## 6.2 Radiated Emission

**Test Requirement:** 47 CFR Part 15B

**Test Method:** ANSI C63.4

**Test site:** Measurement Distance: 3m (Semi-Anechoic Chamber)

**Receiver setup:**

Frequency	Detector	RBW	VBW	Remark
30MHz-1GHz	Quasi-peak	100kHz	300kHz	Quasi-peak Value
Above 1GHz	Peak	1MHz	3MHz	Peak Value

**Limit:**

Frequency	Limit (dB $\mu$ V/m @3m)	Remark
30MHz-88MHz	40.0	Quasi-peak Value
88MHz-216MHz	43.5	Quasi-peak Value
216MHz-960MHz	46.0	Quasi-peak Value
960MHz-1GHz	54.0	Quasi-peak Value
Above 1GHz	54.0	Average Value
	74.0	Peak Value

**Test Procedure:**

### Below 1GHz test procedure as below:

- The EUT was placed on the top of a rotating table 0.8 meters above the ground at a 3 meter semi-anechoic chamber. The table was rotated 360 degrees to determine the position of the highest radiation.
- The EUT was set 3 meters away from the interference-receiving antenna, which was mounted on the top of a variable-height antenna tower.
- The antenna height is varied from one meter to four meters above the ground to determine the maximum value of the field strength. Both horizontal and vertical polarizations of the antenna are set to make the measurement.
- For each suspected emission, the EUT was arranged to its worst case and then the antenna was tuned to heights from 1 meter to 4 meters and the rotation table was turned from 0 degrees to 360 degrees to find the maximum reading.
- The test-receiver system was set to Peak Detect Function and Specified Bandwidth with Maximum Hold Mode.
- If the emission level of the EUT in peak mode was 10dB lower than the limit specified, then testing could be stopped and the peak values of the EUT would be reported. Otherwise the emissions that did not have 10dB margin would be re-tested one by one using peak, quasi-peak or average method as specified and then reported in a data sheet.

### Above 1GHz test procedure as below:

- Different from above is the test site, change from Semi-Anechoic Chamber to fully Anechoic Chamber (Above 18GHz the distance is 1 meter).
- Repeat above procedures until all frequencies measured were complete.

**Test Setup:**

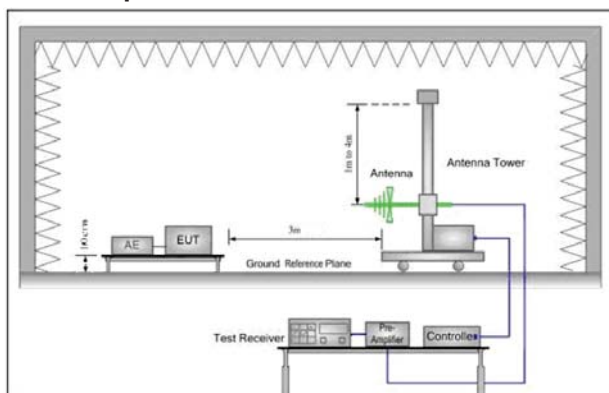


Figure 1. 30MHz to 1GHz

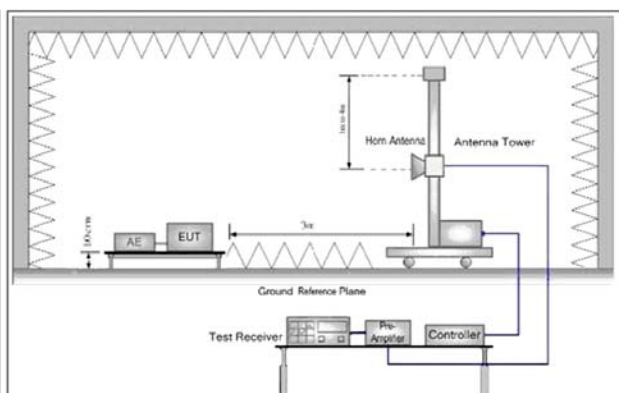


Figure 2. Above 1 GHz

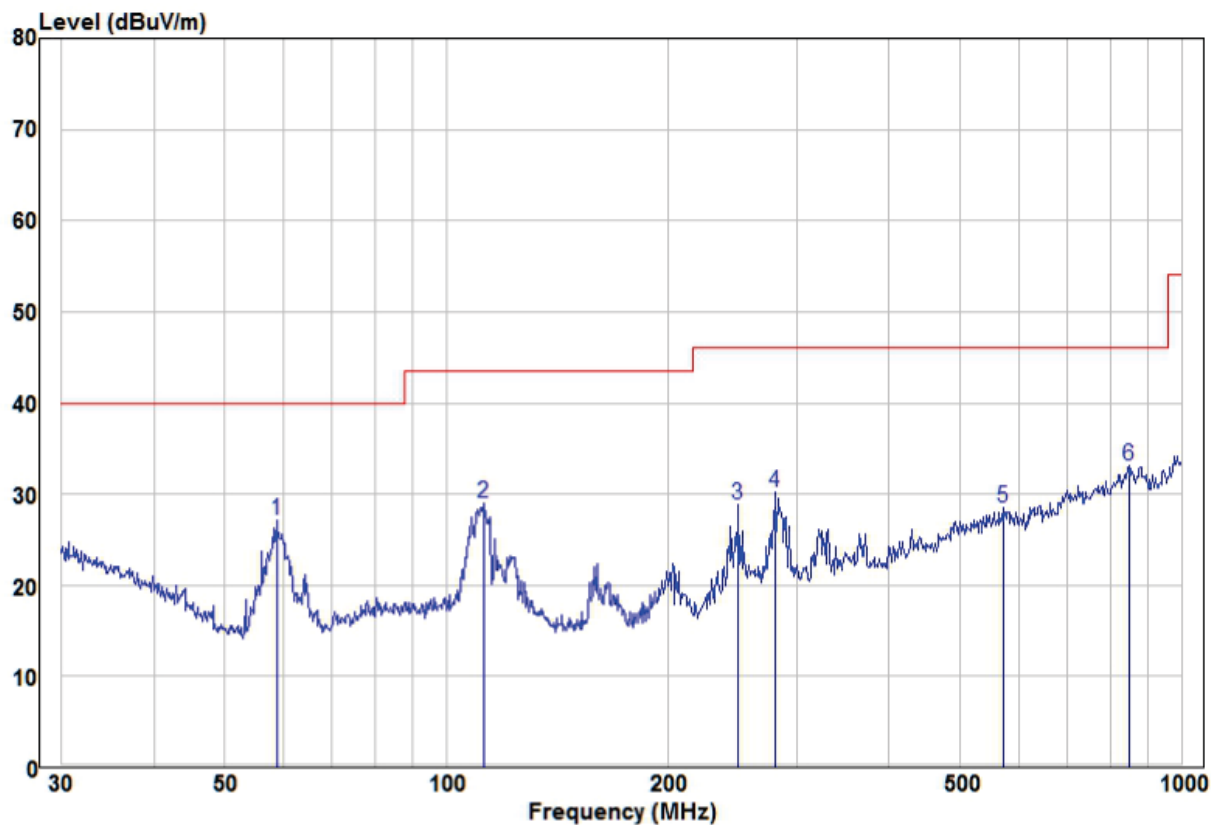
**Instruments Used:** Refer to section 5 for details

**Test Mode:** Normal working

**Test Results:** Pass

Below 1GHz

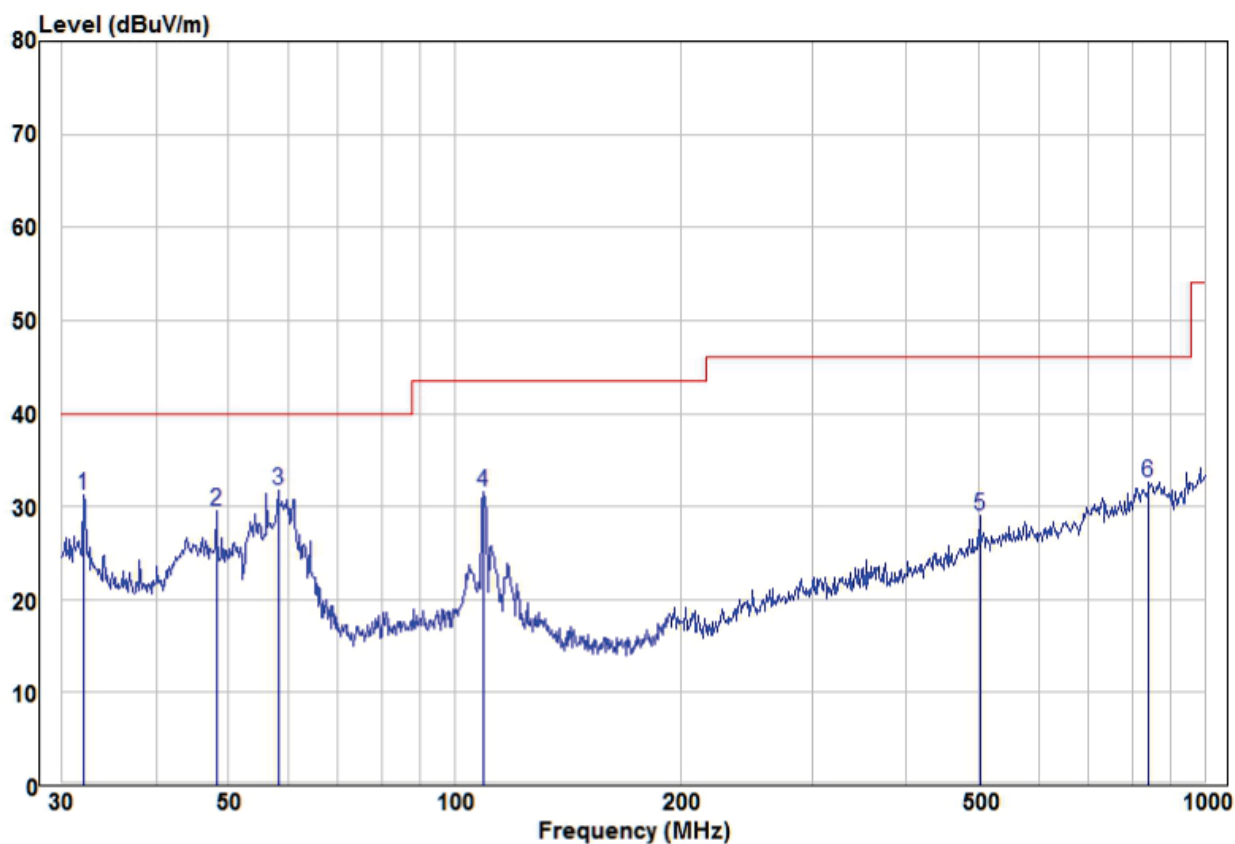
Horizontal



		Read			Limit	Over		
	Freq	Level	Factor	Level	Line	Limit	Remark	Pol/Phase
	MHz	dBuV	dB/m	dBuV/m	dBuV/m	dB		
1	pp	58.82	21.64	5.50	27.14	40.00	-12.86	Peak
2		112.52	18.78	10.31	29.09	43.50	-14.41	Peak
3		249.43	16.74	12.06	28.80	46.00	-17.20	Peak
4		280.02	17.08	13.07	30.15	46.00	-15.85	Peak
5		572.61	9.55	19.02	28.57	46.00	-17.43	Peak
6		848.06	9.03	24.06	33.09	46.00	-12.91	Peak



Vertical

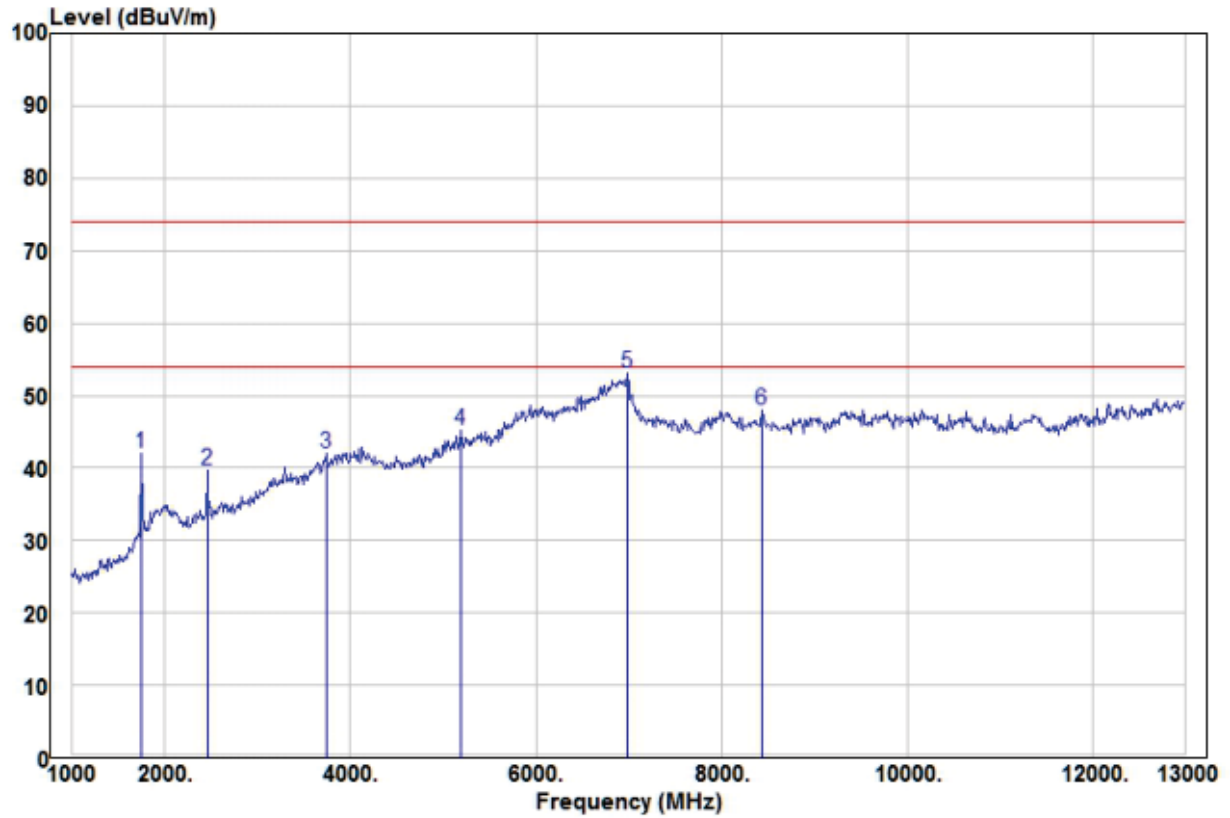


	Freq	Read Level	Factor	Level	Limit	Over Limit	Remark	Pol/Phase
	MHz	dBuV	dB/m	dBuV/m	dBuV/m	dB		
1	32.07	15.92	15.38	31.30	40.00	-8.70	Peak	VERTICAL
2	48.16	20.54	8.96	29.50	40.00	-10.50	Peak	VERTICAL
3 pp	58.20	25.94	5.76	31.70	40.00	-8.30	Peak	VERTICAL
4	109.41	21.37	10.20	31.57	43.50	-11.93	Peak	VERTICAL
5	501.18	10.74	18.29	29.03	46.00	-16.97	Peak	VERTICAL
6	842.13	8.55	24.10	32.65	46.00	-13.35	Peak	VERTICAL



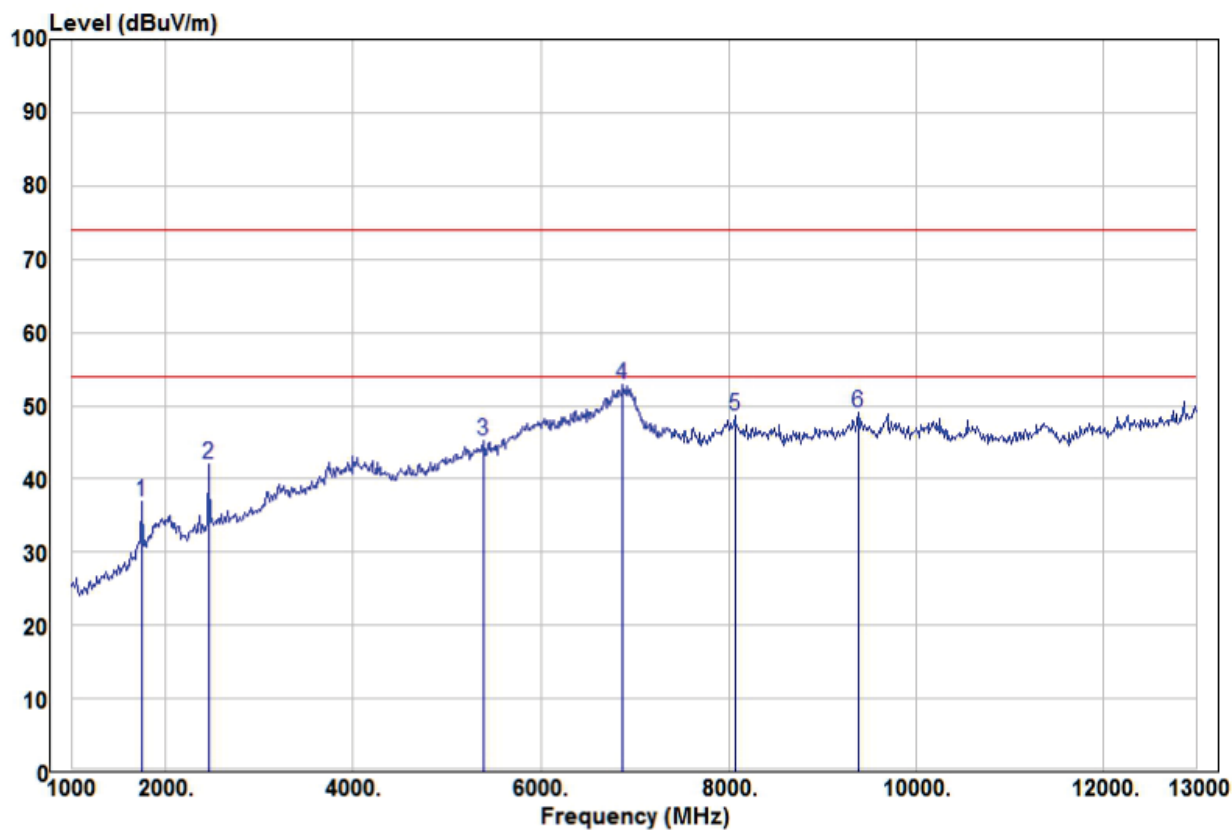
Above 1GHz

Horizontal



	Freq	Read Level	Factor	Level	Limit Line	Over Limit	Remark	Pol/Phase
	MHz	dBuV	dB/m	dBuV/m	dBuV/m	dB		
1	1744.00	52.39	-10.36	42.03	54.00	-11.97	Peak	HORIZONTAL
2	2452.00	48.48	-8.82	39.66	54.00	-14.34	Peak	HORIZONTAL
3	3736.00	44.82	-2.73	42.09	54.00	-11.91	Peak	HORIZONTAL
4	5188.00	44.24	0.96	45.20	54.00	-8.80	Peak	HORIZONTAL
5 pp	6988.00	45.56	7.49	53.05	54.00	-0.95	Peak	HORIZONTAL
6	8440.00	40.77	7.21	47.98	54.00	-6.02	Peak	HORIZONTAL

Vertical

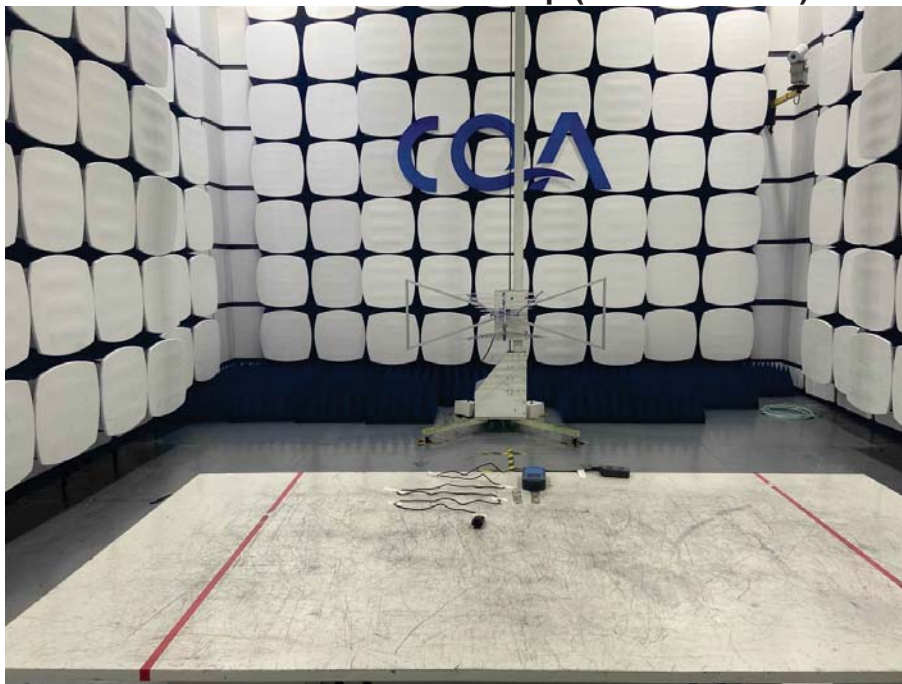


	Freq	Read Level	Factor	Level	Limit Line	Over Limit	Remark	Pol/Phase
	MHz	dBuV	dB/m	dBuV/m	dBuV/m	dB		
1	1744.00	47.35	-10.36	36.99	54.00	-17.01	Peak	VERTICAL
2	2452.00	50.76	-8.82	41.94	54.00	-12.06	Peak	VERTICAL
3	5392.00	43.80	1.32	45.12	54.00	-8.88	Peak	VERTICAL
4 pp	6880.00	45.24	7.59	52.83	54.00	-1.17	Peak	VERTICAL
5	8068.00	41.55	6.99	48.54	54.00	-5.46	Peak	VERTICAL
6	9388.00	40.98	8.11	49.09	54.00	-4.91	Peak	VERTICAL

## APPENDIX 1 PHOTOGRAPHS OF TEST SETUP

Test Model No.: IHC-200-WIFI

**Radiated emission Test Setup (30MHz~1GHz)**



**Radiated emission Test Setup (Above 1GHz)**



### Conducted Emissions Test Setup

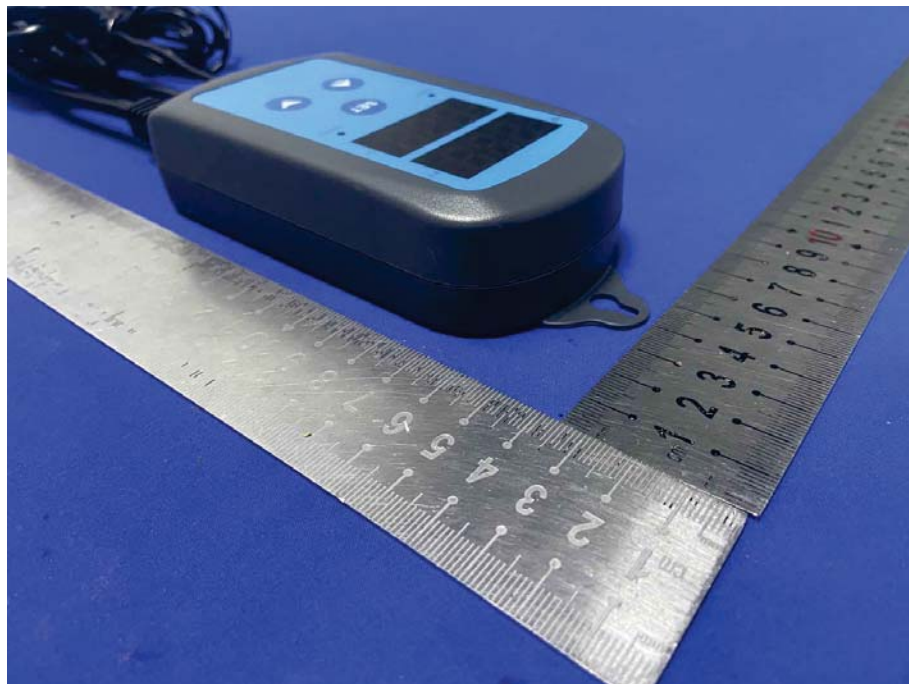


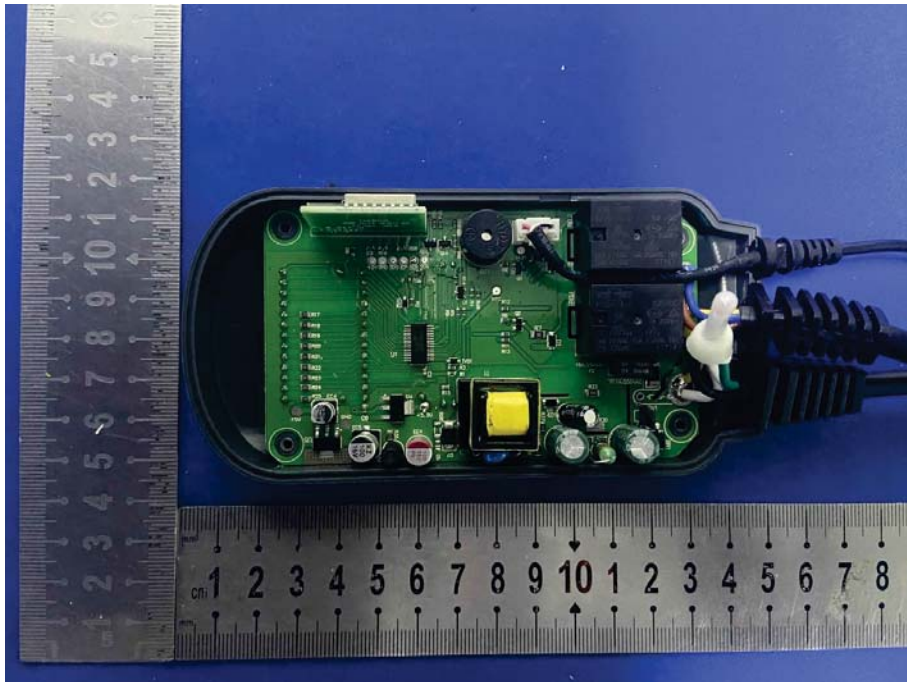


## APPENDIX 2 PHOTOGRAPHS OF EUT

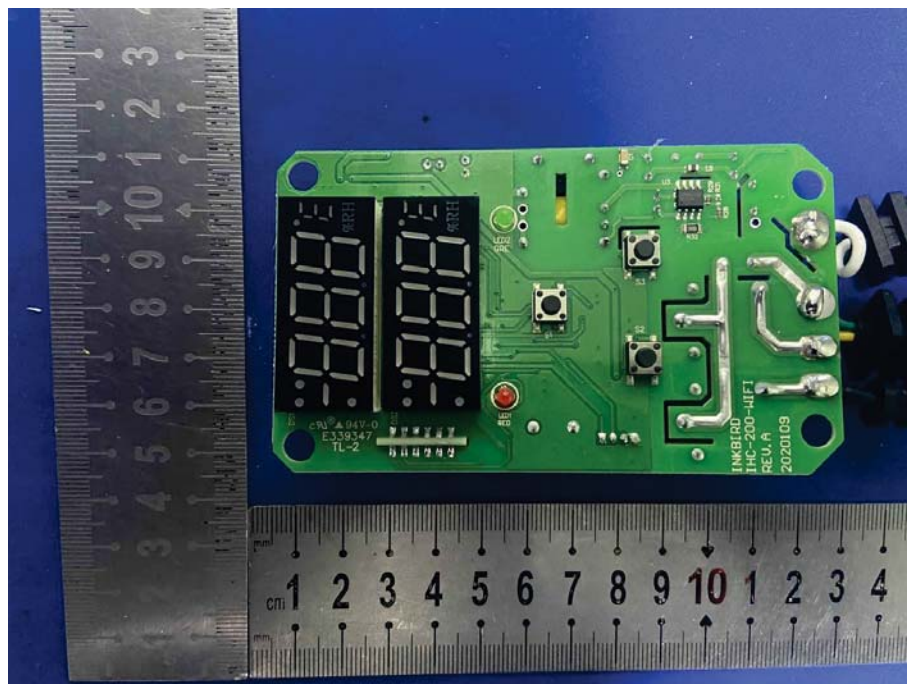
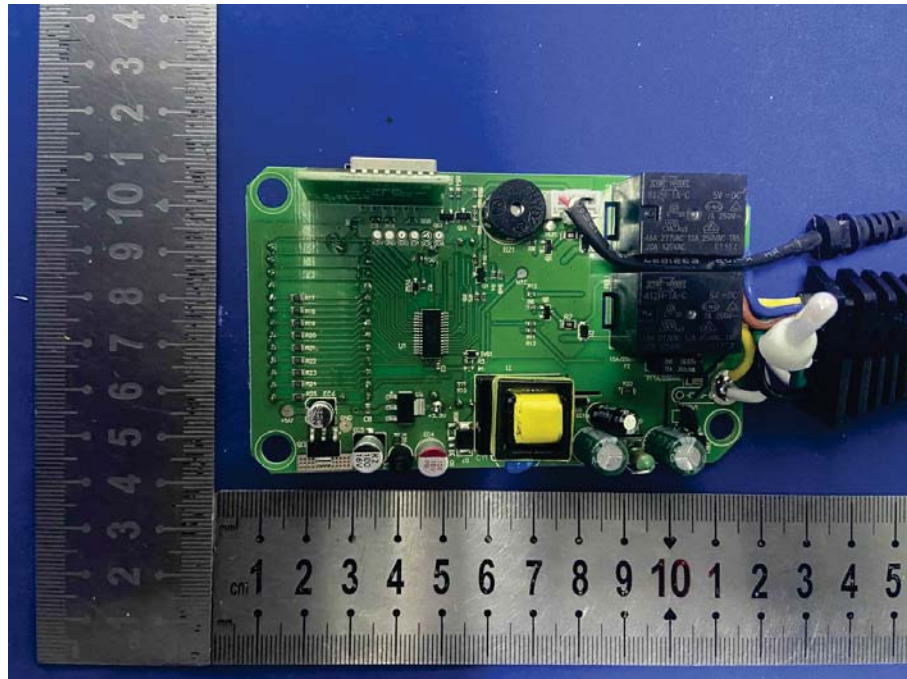
Test Model No.: IHC-200-WIFI











\*\*\* End of Report \*\*\*