





USER MANUAL



1. Light introduction

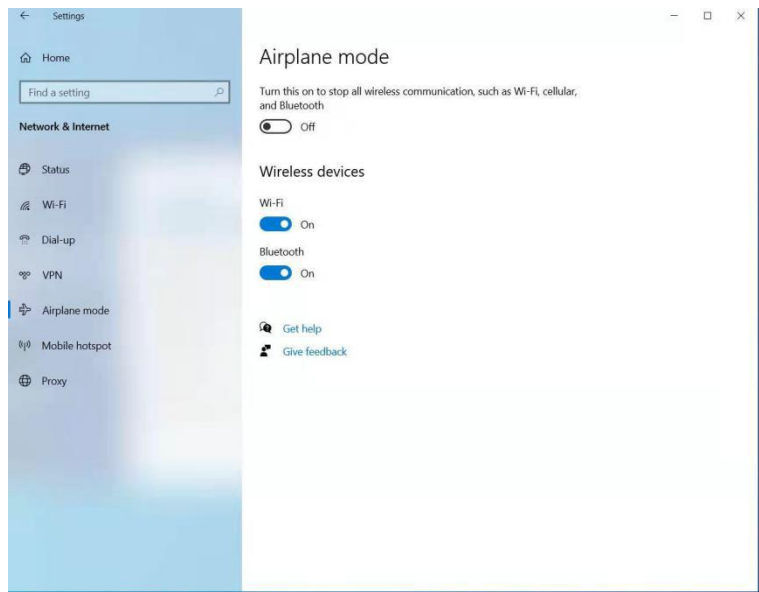
LED symbols	Content
	Colorful light shows that system is in power
	The battery LED is lit to indicate that the device is being charged
	This light is on, indicating that the numeric keypad is on
	This light is on, indicating that the Caps Lock key is activated

2.Specification parameters

Product Specification	
CPU	intel J4105 J3455 J3355
Screen	15.6"LCD 1920*1080 TN/15.6"LCD 1920*1080IPS
Memory	8GB
Storage	128GB/ 256GB/ 512GB
OS Support	windows 10
Connectivity	Wifi / BT4.0
Camera	Front 0.3M
Battery	4000mAh 7.6V
I/O	USB *2, Mini HDMI*1,TF card*1,DC IN*1,Audio*1
Gross Weight including gift box	1.7kg
Dimension & Weight	351x232x17mm/1.48kg
ODM Additional	T
Features	

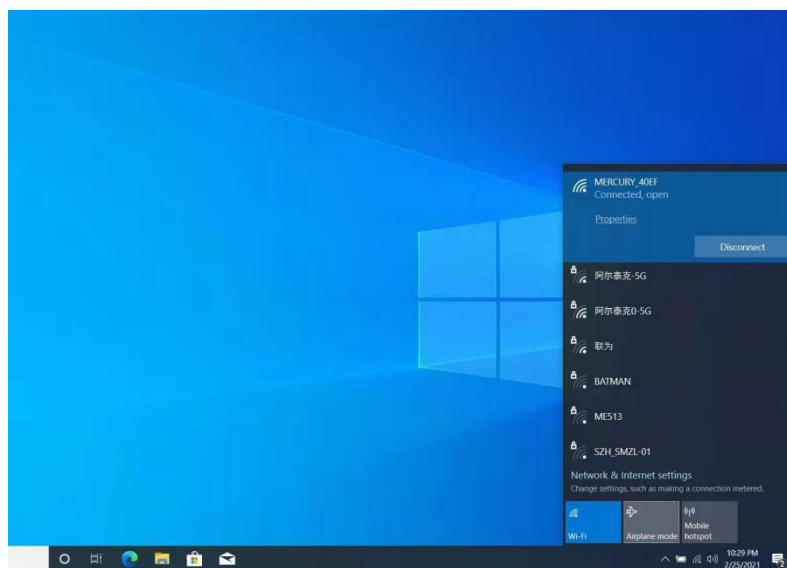
3.Flight mode setting, as shown in the figure

1. Computer network and Internet settings are turned on



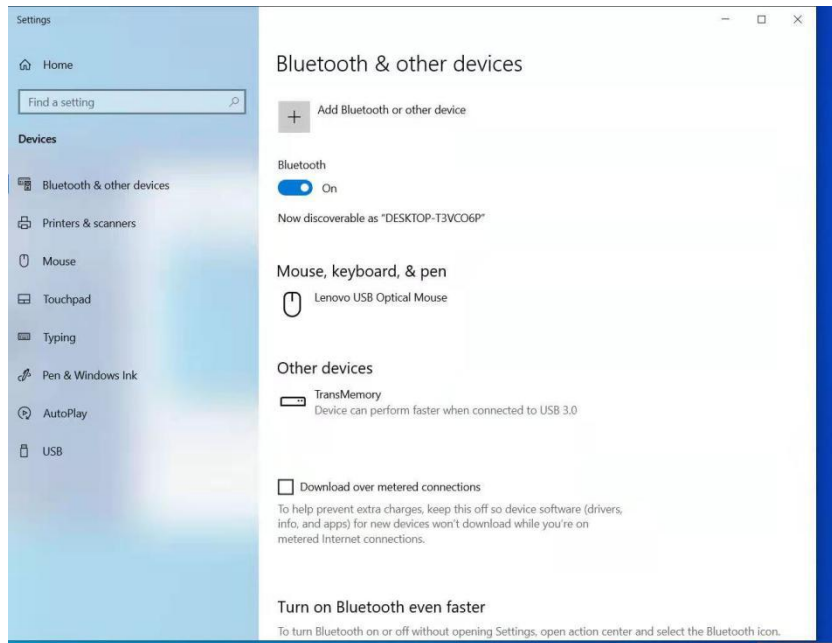
4. WiFi open and connect

1. Click the WiFi icon at the lower right foot of the computer to open it and search for hot connections



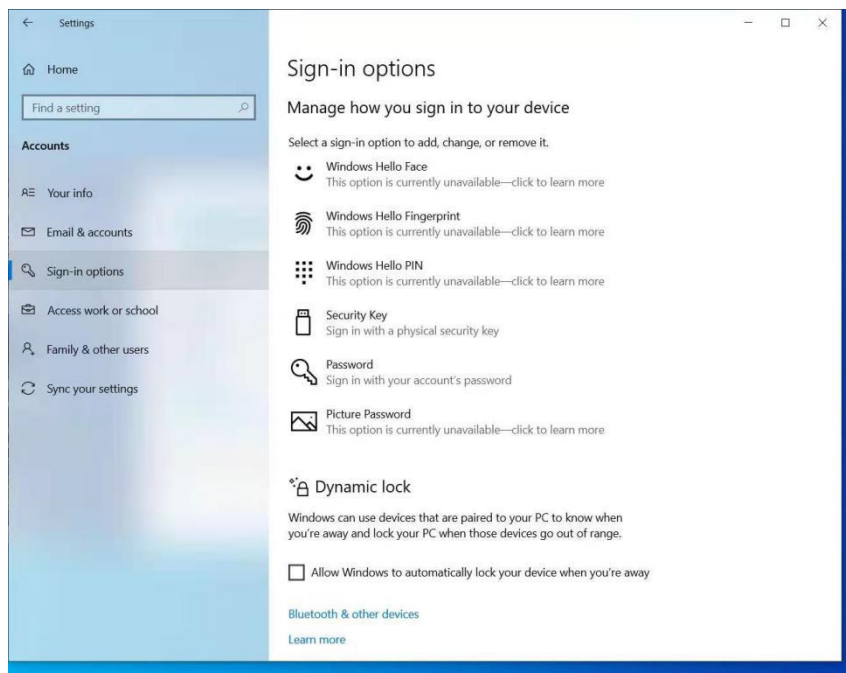
5. Bluetooth open connection

1. Quickly open Bluetooth, click the Bluetooth icon in the lower right foot, and double-click to open connection pairing



6. Computer user password settings

1. Open Settings - account - login options - password



FCC Warning Statement

Changes or modifications not expressly approved by the party responsible for compliance could void the user's authority to operate the equipment. This equipment has been tested and found to comply with the limits for a Class B digital device, pursuant to Part 15 of the FCC Rules. These limits are designed to provide reasonable protection against harmful interference in a residential installation. This equipment generates uses and can radiate radio frequency energy and, if not installed and used in accordance with the instructions, may cause harmful interference to radio communications. However, there is no guarantee that interference will not occur in a particular installation. If this equipment does cause harmful interference to radio or television reception, which can be determined by turning the equipment off and on, the user is encouraged to try to correct the interference by one or more of the following measures:

- - Reorient or relocate the receiving antenna.
- - Increase the separation between the equipment and receiver.
- - Connect the equipment into an outlet on a circuit different from that to which the receiver is connected.
- - Consult the dealer or an experienced radio/TV technician for help

This device complies with part 15 of the FCC Rules. Operation is subject to the following two conditions: (1) This device may not cause harmful interference, and (2) this device must accept any interference received, including interference that may cause undesired operation.

The product has undergone RF exposure assessment and meets the requirements.