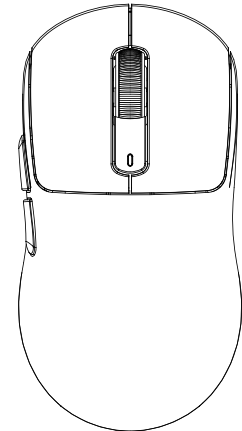




X3



LIGHTWEIGHT MOUSE

User Manual

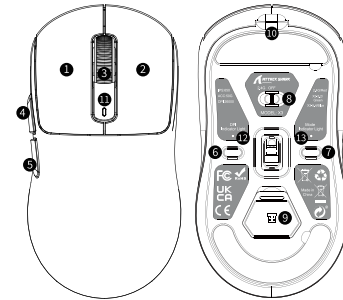
EN

Thank you very much for purchasing our **ATTACK SHARK** product, and hope it can bring you a new operation and feeling. At the same time, we look forward to getting your valuable suggestions on our products, and we will continue to provide you with better products and services.

PRODUCT DESCRIPTION

1. Product model: X3
2. Product interface type: USB-Type-C
3. Product connection method: USB, 2.4G
4. Product optical sensor: original phase PAW3395
5. Transmission frequency: 2405-2475MHz
6. Return rate (HZ): 125/ 250/ 500/ 1000HZ default (drive adjustable)
7. Frame rate (IPS): 650IPS
8. Maximum acceleration (G): 50G
9. DPI value and corresponding color: 800 (red)- 1600 (green)- 2400 (blue) -3200 (cyan)- 5000 (yellow)- 26000 (purple)
10. Charging current: 280mA
11. Charging voltage: 5V
12. Product weight: 49g±3g
13. Product size: 118.5*61*39.7mm
14. Data cable interface (length): Type-C/ 1.5 meters
15. Wireless transmission distance: 10 meters
16. Switch brand and service life: Kaihua 80 million times
17. Support operating system: XP, Win7, Win8, win10, win11, Mac OS, Android, Linux etc.
18. Sleep mode current: Light sleep (≈0.3mA), deep sleep (≈60uA)

BUTTON FUNCTION DESCRIPTION



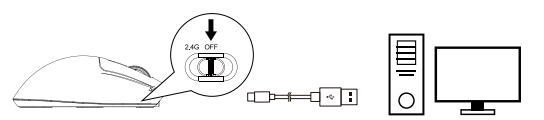
- 1: Left button
- 2: Right click
- 3: Middle button
- 4: Forward key
- 5: Back key
- 6: DPI cycle
- 7: Short press the Bluetooth channel switch / long press the 3 seconds to force the code key
- 8: Power Toggle (2.4G-OFF)
- 9: Receiver storage compartment
- 10: Type-C interface
- 11: Indicator lights: charging (purple), low voltage (flashing red), fully charged (green light is always on)
- 12: DPI indicator light (turn off after 5 seconds)
- 13: Mode indicator light: 2.4G (red)
- 14: DPI : 800(red)- 1600 green (default)- 2400(blue)- 3200 (cyan)- 5000 (yellow)- 26000(purple)

Tips:

- 1. Sleep mode**
 - (1) The mouse immediately enters a light sleep after it stops working.
 - (2) The mouse enters deep sleep without any operation for 10 minutes.
- 2. Sleep wake-up method**
 - (1) Light sleep, wake up by moving.
 - (2) Deep sleep, press key to wake up.
- 3. Hardware connection:** Insert the USB plug of the product into the port of USB 1.1 or above (when the product is used for the first time, the bottom right corner of the computer will pop up an automatic hardware installation prompt).

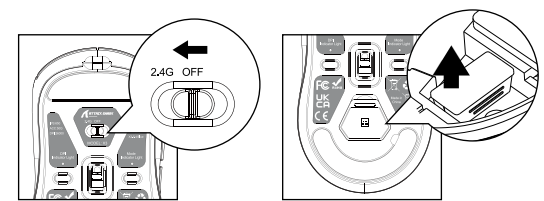
CONNECTION MODE

Wired mode connection method:



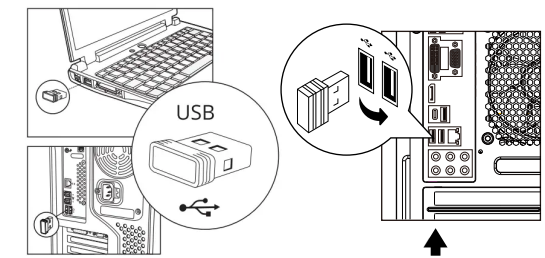
Use the included TYPE-C cable to connect to the computer. When the cable is plugged in, switch the mouse to "OFF" for wired mode. Move the mouse and the computer screen pointer can move, and the mouse can be used normally.

2.4G connection method:



1. Turn the switch to 2.4G
2. Take out the receiver

3. Plug the receiver into the computer USB port
The computer will automatically install the configuration software



If there is no response when plugging in the receiver computer, replace another USB port

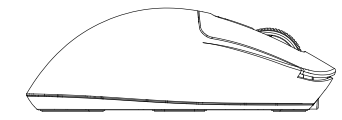
⚠ If the connection is blocked or the signal is lost, please repeat steps 1, 2, and 3. Then code again.

Code matching method: Press and hold the code button for about three seconds, the 2.4G channel light will flash red quickly. When the pairing is successful, the light will be steady red for 1 second and then turn off, and the mouse is in normal use.

⚠ PRECAUTIONS

- ⚠ It is forbidden to immerse the mouse in liquid or spray the mouse with liquid
- ⚠ It is forbidden to use the mouse in high temperature and high humidity environment
- ⚠ Do not place the mouse in an open flame
- ⚠ Violence against pressing the mouse is prohibited
- ⚠ Do not disassemble the mouse

PACKING LIST



Mouse*1



2.4G Receiver*1



Wire*1



Manual*1

FCC Warning:

This equipment has been tested and found to comply with the limits for a Class B digital device, pursuant to part 15 of the FCC Rules. These limits are designed to provide reasonable protection against harmful interference in a residential installation. This equipment generates, uses and can radiate radio frequency energy and, if not installed and used in accordance with the instructions, may cause harmful interference to radio communications. However, there is no guarantee that interference will not occur in a particular installation. If this equipment does cause harmful interference to radio or television reception, which can be determined by turning the equipment off and on, the user is encouraged to try to correct the interference by one or more of the following measures:

- Reorient or relocate the receiving antenna.
- Increase the separation between the equipment and receiver.
- Connect the equipment into an outlet on a circuit different from that to which the receiver is connected.
- Consult the dealer or an experienced radio/TV technician for help.

Caution: Any changes or modifications to this device not explicitly approved by manufacturer could void your authority to operate this equipment.

This device complies with part 15 of the FCC Rules. Operation is subject to the following two conditions:

(1) This device may not cause harmful interference, and (2) this device must accept any interference received, including interference that may cause undesired operation.

This equipment complies with FCC radiation exposure limits set forth for an uncontrolled environment. This equipment should be installed and operated with minimum distance 0cm between the radiator and your body.