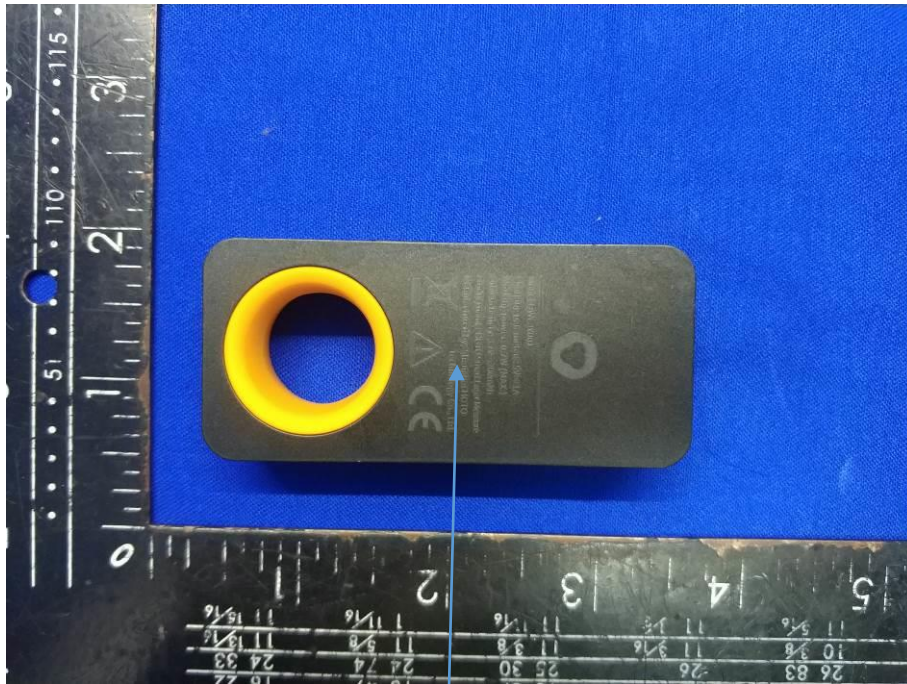


Label:



Model:QWCJY001

Charging parameters: 5V=1A

Working power: 0.7W (MAX.)

Lithium battery: 3.7V=200mAh

FCC ID: 2AZB9-QWCJY001SW

Product name: HOTO Smart Laser Measure

Manufactured by: Shanghai HOTO
Technology Co., Ltd.

