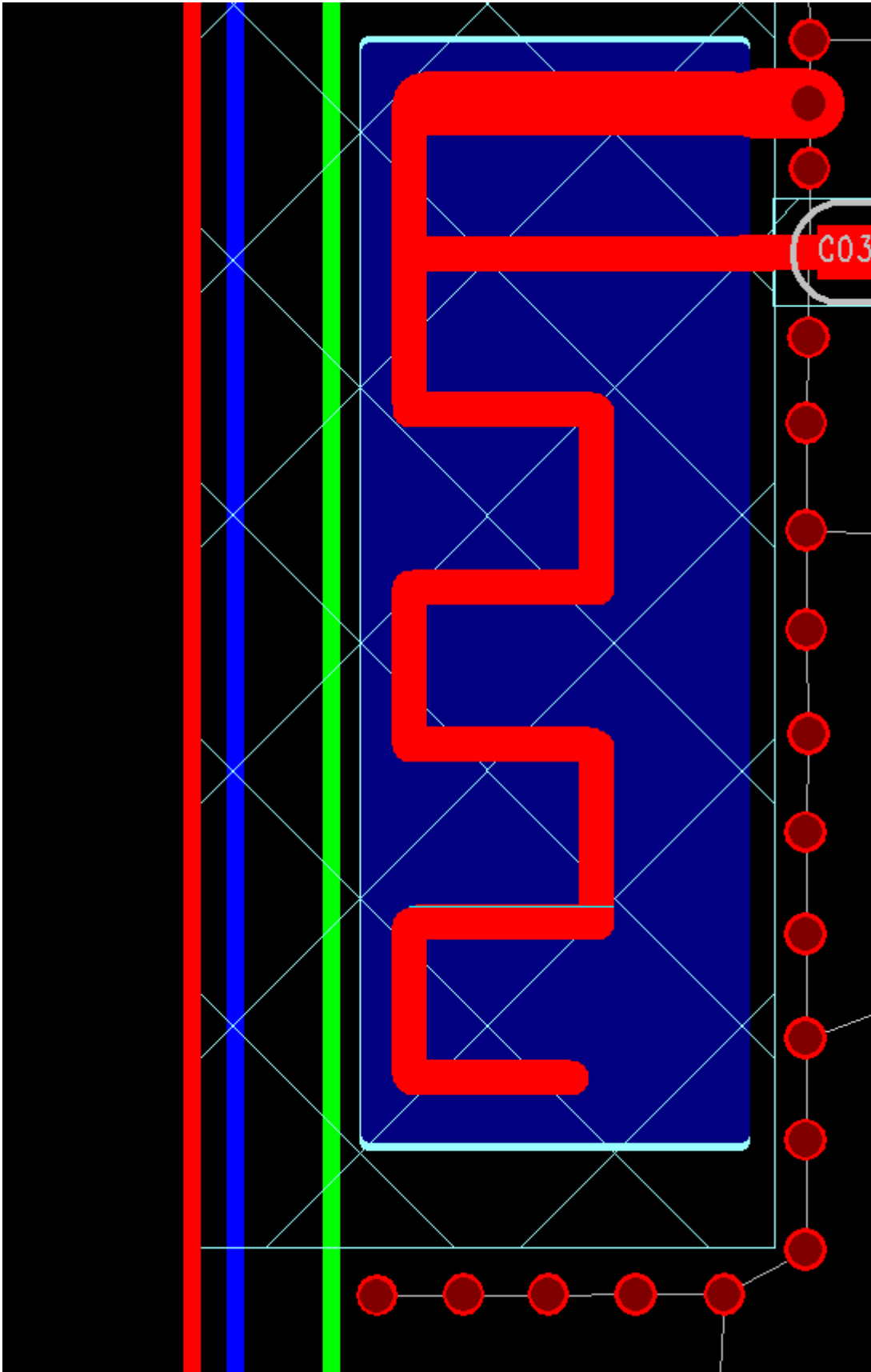


Bluetooth antenna specifications

1、 Introduction of antenna

The Bluetooth antenna is made directly on the PCB board.

2、 antenna shape



3、 antenna parameter

Bluetooth built-in antenna	
Frequency (MHz)	2402 ~ 2480 MHz
VSWR	≤ 1.92
Impedance	50 Ohm Nominal
Return Loss	-10 dB Max
Radiation	Omni-directional
Gain (Peak)	1.08443dBi
Polarization	Linear, Vertical
Admitted Power	2W
Connector	Tin

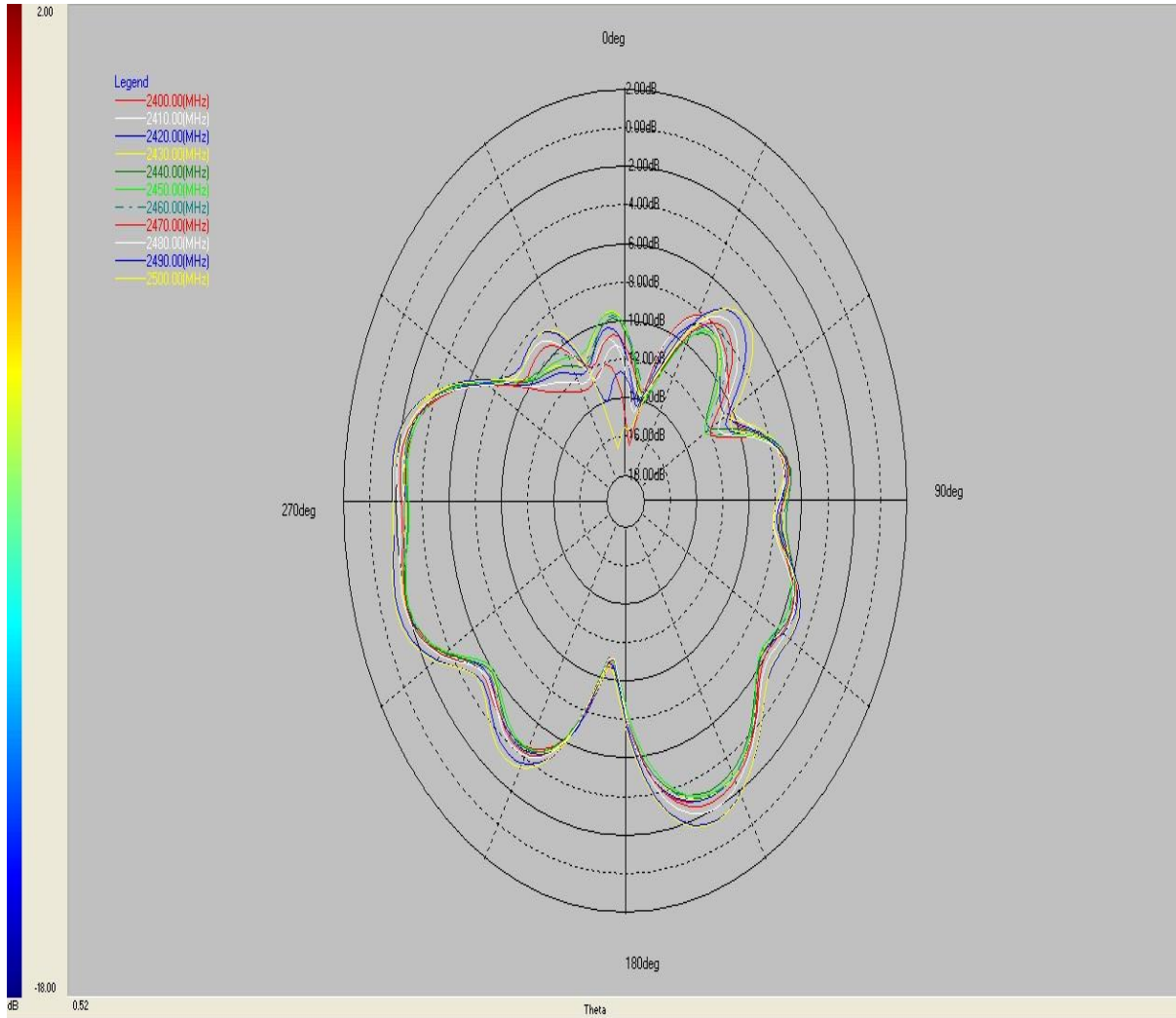
4、 Antenna gain report

Spectrum Detector: PK
Test By: Andy
Test Result: PASS
Modulation: GFSK

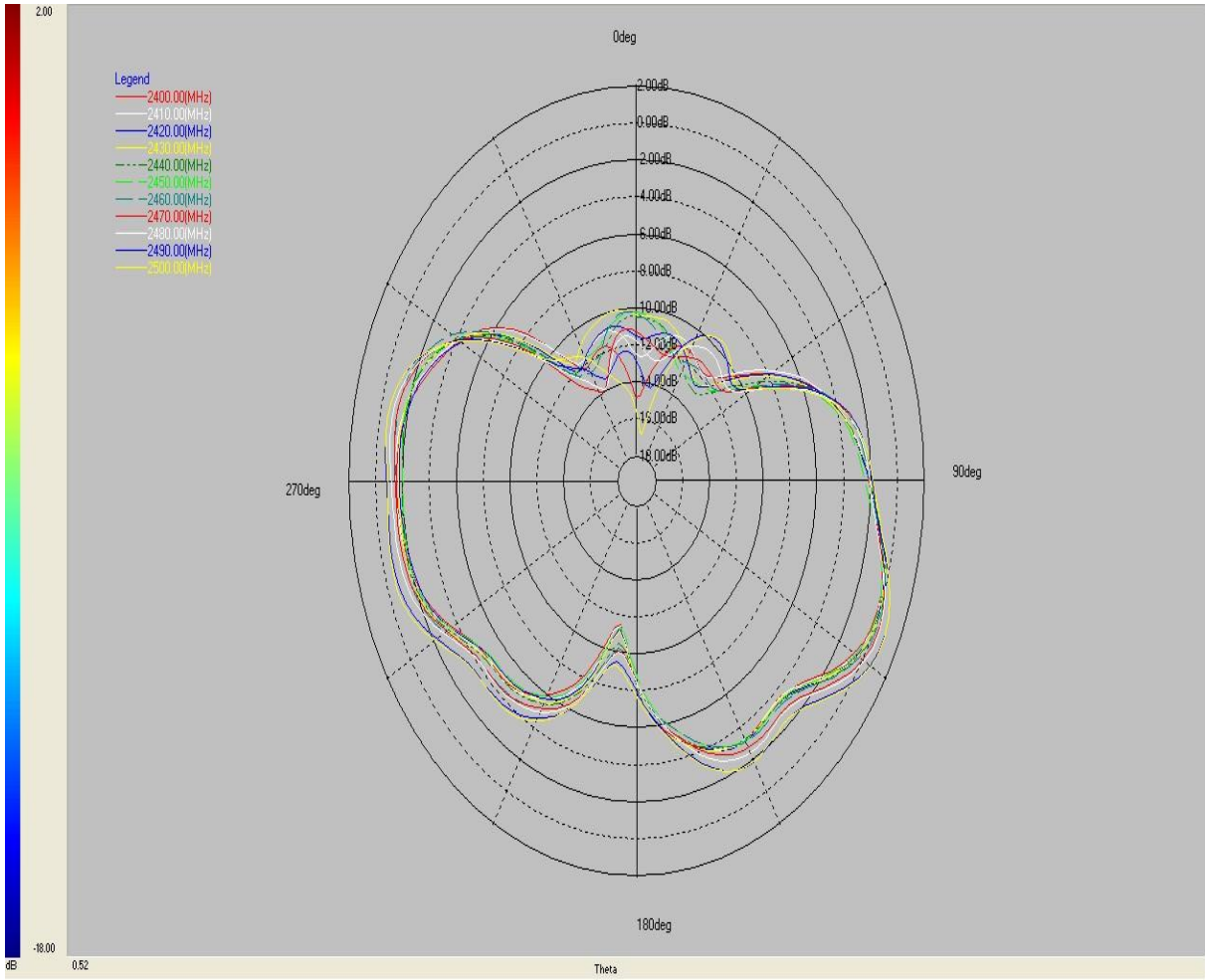
Test Date : June 8, 2013
Temperature : 28°C
Humidity : 55 %

Frequency VNA (MHz)	E Total. dB(dB)
2400MHz	0.0403503
2410MHz	0.0886264
2420MHz	0.267381
2430MHz	0.193012
2440MHz	0.26366
2450MHz	0.0723139
2460MHz	0.36895
2470MHz	0.551525
2480MHz	0.640702
2490MHz	1.05232
2500MHz	1.08443

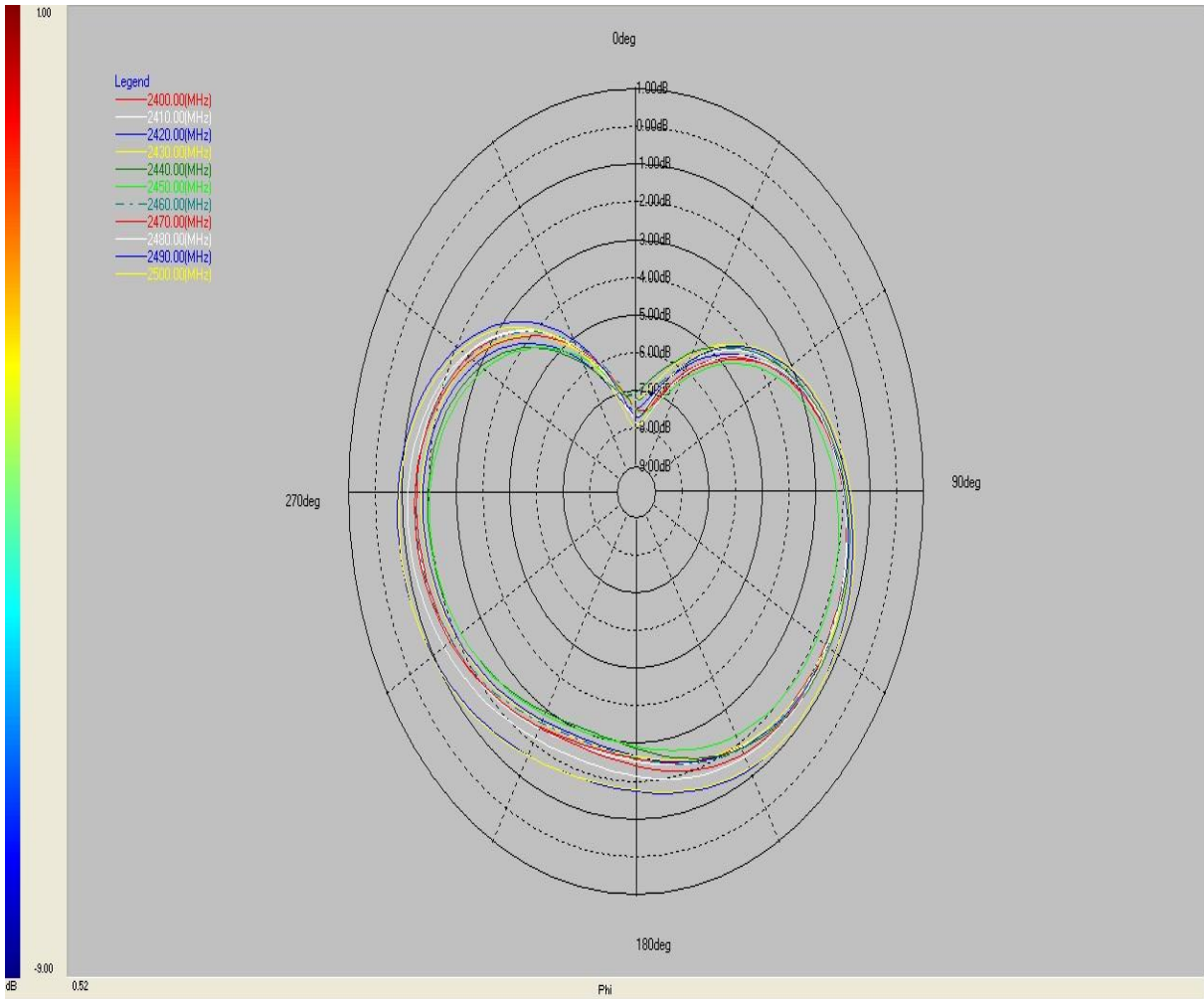
Directional diagram:



PHI 0 deg



PHI 90deg



THETA 90 deg

standing wave ratio:

