

# XQi3





The SN Code of your vehicle.  
Please see P.7 for detailed information.

This owner's manual contains important safety, operational and maintenance information. Any person operating or riding as a passenger on your vehicle should carefully read and fully understand the entire contents of this manual prior to riding the vehicle. For your safety, follow all safety warnings contained within the owner's manual and the labels applied to your vehicle. If you have any questions, please ask your dealer for assistance.

 **WARNING California Proposition 65**

Lithium-ion Batteries and/or products that contain Lithium-ion Batteries can expose you to chemicals including cobalt, lithium, nickel oxide, and nickel, which are known to the State of California to cause cancer and birth defects or other reproductive harm.

**For more information go to [www.P65Warnings.ca.gov](http://www.P65Warnings.ca.gov).**

# CONTENTS

General Notice .....	01
Precautions .....	02
Safety Notice .....	03
Installation Guide .....	04
Downloading the APP .....	07
Parts Info .....	08
Dashboard and Combination Switches .....	11
Key and Remote Control .....	15
Battery, Charger, Motor and Controller .....	17
ARE YOU READY? .....	24
Reporting Safety Defects .....	27
Federal Communications Commission (FCC) Compliance Statement for USA .....	28
Maintenance and Repair .....	29
Troubleshooting .....	37
Basic Parameters .....	41
Warranty information .....	44
Service and maintenance .....	46
Maintenance Record .....	48

## General Notice

- Please read this User Manual carefully for proper operation before riding the vehicle.
- For your safety, please check whether the parts are in good condition according to this User Manual before riding. Contact your dealer in time in case of any problems.
- Please follow the traffic laws. Slow down on slippery roads in bad weather to allow greater braking distance for your safety.
- Please pay attention to deep water. It may cause rusting or failure of the motor, battery, or other parts if water level reaches wheel axle.
- Do not dismantle the vehicle on your own. Please contact your dealer for replacement or purchase of original parts.
- For others' safety and preventing unnecessary damage to your vehicle, do not lend your vehicle to those who can't operate.
- Please keep the User Manual properly. The final explanation of this User Manual belongs to the manufacturer and is subject to change without notice.
- For more product information or maintenance need, please visit our website: [www.niu.com/US](http://www.niu.com/US)

## Precautions

- Rider and Passenger  
**This vehicle only recommended for single-rider operation.**
- This User Manual should be deemed as a permanent document of this vehicle . If this vehicle is transferred to others, this User Manual should also be handed over to the new owner.
- Reproduction or reprint of any part of this User Manual is strictly prohibited.

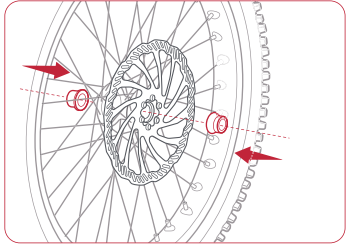
**⚠ ATTENTION:** Do not exceed speed limit and apply brakes cautiously. Always use side stand when parking.

**⚠ WARNING:** Failure to follow the instructions herein may lead to serious casualties, personal injury, or vehicle damage.

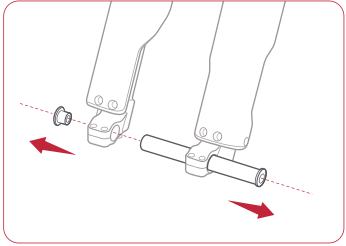
## Safety Notice

- Using a helmet and protective goggles is strongly advised.
- You are advised to take proper training or exercise before using on open roads.
- Please follow the Operation Guide (P.25) to fully understand how to properly operate the motorcycle.
- It should be noted that the braking distance in bad weather will be much longer. Please avoid braking on paint markers, manhole covers, and oil stains to prevent slipping. Pay extra attention when riding through railway crossings, junctions, tunnels, and bridges. Slow down if road conditions are unclear.
- Do not use high beam indiscriminately. Continuous use of high beam may disturb the vision of other drivers and pedestrians.
- Do not use mobile phones or other electronic devices which may draw your attention while riding.
- Do not change lanes without signaling. Changing lanes is one of the leading causes of accidents. When you need to change lanes, remember to use the turn signal first. Always check for vehicles approaching from behind before changing lanes.

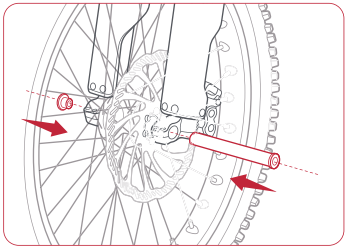
# Installation Guide



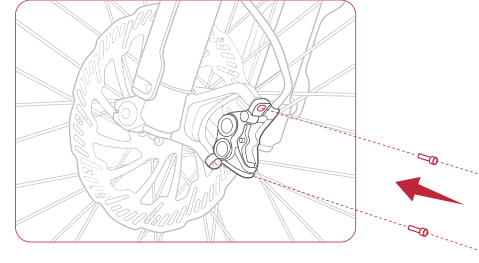
**Step 1** Install the front wheel bushings on both sides.



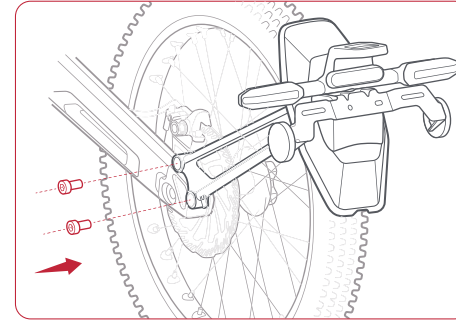
**Step 2** Loosen the 4 front axle pinch bolts at the lower end of the fork; lightly tap the axle to remove.



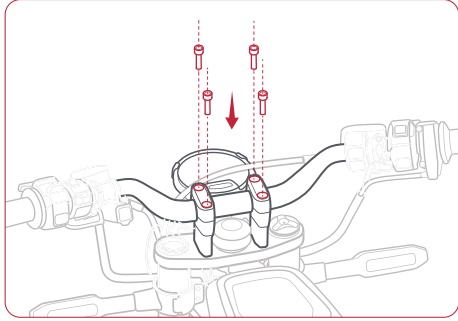
**Step 3** Secure the left and right lock nuts with a H8 hexagon wrench (( $T=15-20$  N.m). Tighten the 4 pinch bolts at the bottom of the fork with a H4 hex socket ( $T=8-12$  N.m).



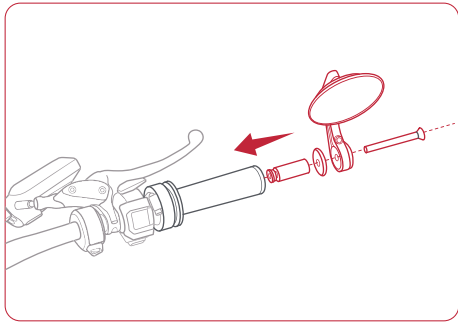
**Step 4** Align the front disc brake caliper with the front fork hole, and tighten it with two M6\*20 round head hexagon socket screws. The tightening torque  $T=(12-18)$ N.m. During installation, it is necessary to pre-tighten the disc brake caliper, then squeeze the corresponding front brake lever to ensure that the disc brake pump is in a closed state when tightening the screws.



Align the rear fender mounting bracket with the installation hole position and tighten the four M8 x 16 hex socket bolts with a wrench ( $T=25-35$  N.m).



**Step 1** Install handlebars and align the scale line with the seam position; Fix the stem cap, tighten with four M6\*25 Cylindrical hexagonal bolts; T=(15-20) N.m



**Step 2** Align the rearview mirrors with the holes at both ends, adjust to the appropriate position, and tighten with a wrench.

## Downloading the APP

Functions such as checking battery level, locating, and management can be implemented on the electric vehicle through the app.

**Step 1** Scan the QR code below to download the APP titled Niu E- motorcycle.

**Step 2** Run Setup after downloading and register.

**Step 3** Please scan the QR code on the inside of cover page for app registration.



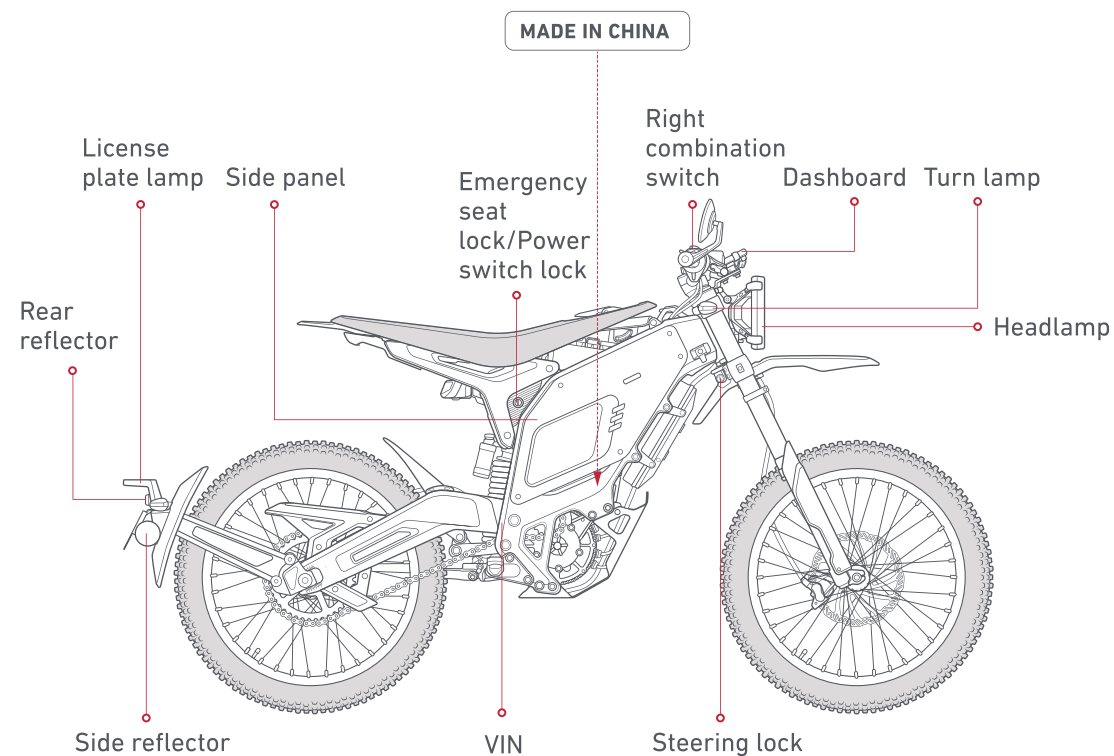
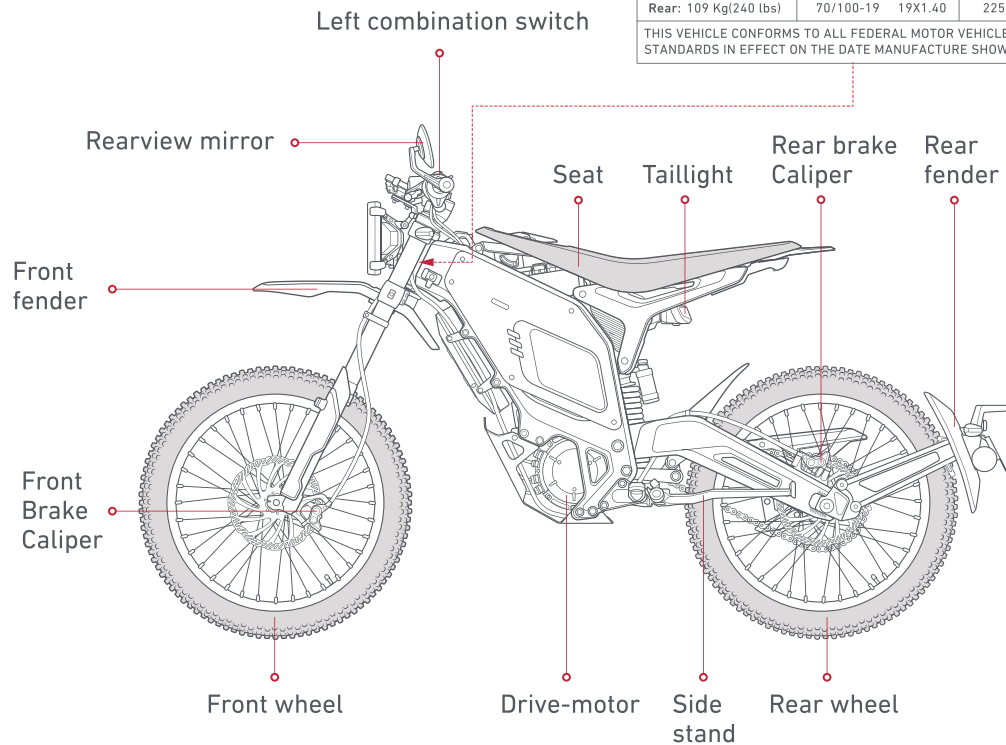
### NOTE:

App requires at least Android 4.0 or iOS 8 and later. Make sure mobile device is connected to the internet when running the app (WiFi / 2G / 3G / 4G).

# Parts Info

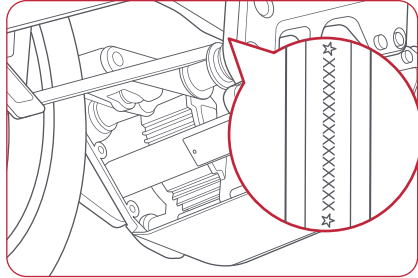
## Part 567 Certification Labels

Manufactured By: JIANGSU NIU ELECTRIC TECHNOLOGY CO., LTD			
Type of Vehicle: Motor-driven cycle			Date:
GVWR: 185 Kg(408 lbs)		VIN:	
GAWR	Dimension Tire Rim		Cold Inflation Pressure
Front: 76 Kg(168 lbs)	70/100-19	19X1.40	225 kPa(33PSI)
Rear: 109 Kg(240 lbs)	70/100-19	19X1.40	225 kPa(33PSI)
THIS VEHICLE CONFORMS TO ALL FEDERAL MOTOR VEHICLE SAFETY STANDARDS IN EFFECT ON THE DATE MANUFACTURE SHOWN ABOVE.			

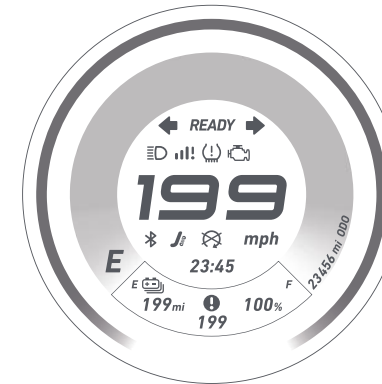
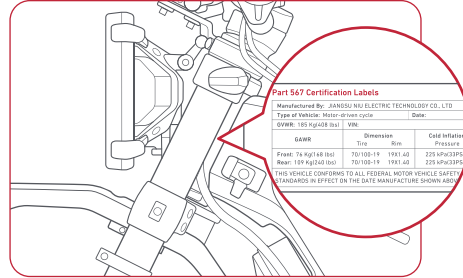


# Dashboard and Combination Switches

## VIN location



## Vehicle nameplate location








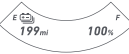

General interface



Timing interface

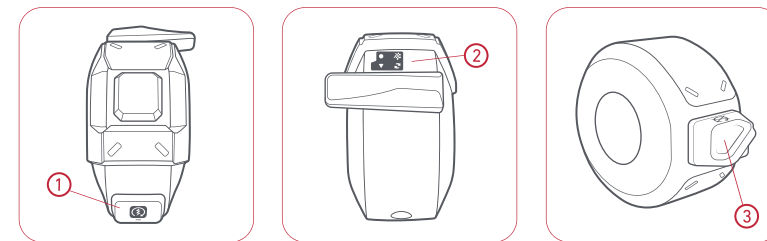
<b>READY</b>	Ready	↔	Turn indicator	☰	High beam
!!!	No Signal <sup>[1]</sup>	(!)	Abnormal tire pressure <sup>[2]</sup>	(!)	OBD abnormality
<b>23:45</b>	Time	<b>199</b> mph	Speed/gear/percentage <sup>[3]</sup>	23456 mi 000	Odometer
(!)	Error code				



	Bluetooth	Solid when connected, flashing during pairing mode
	Side stand	Displayed when working
	Stop status	Kill Switch is displayed when the vehicle is stopped
<b>E</b>	Gear mode	Display the current gear mode E or S
	State atmosphere light	Changes color based on vehicle state
	Speed loop	Display the metering ring based on real-time speed
	Electricity level	Remaining battery percentage and estimated range
	Timer	In the timing interface, press the left function button inward to switch between segmentation/reset; Press down to start/pause timing

- [1] Flashing when detecting weak mobile network or satellite positioning signals. ( Network communication module needs to be installed)
- [2] Display when tire pressure exceeds the set value is detected (TPMS needs to be installed)
- [3] Display real-time speed, parking mode, or progress percentage based on vehicle status

## Right-hand Combination Switch



- ① Start button
- ② Right function button
- ③ Emergency stop button



### Start button

Hold the brake (whether left or right) and press the button into READY;

In Ready mode, press the button into parking mode (P gear).



### Right function button

Press down to switch the interface.



### Emergency stop button

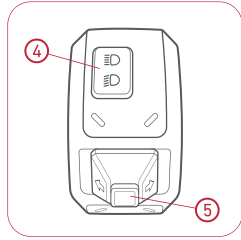
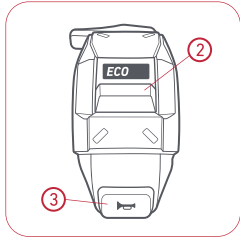
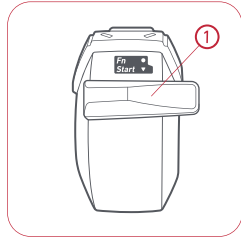
In case of emergency, this button will cut off power supply to the motor and stop the vehicle.



### Seat Cushion button

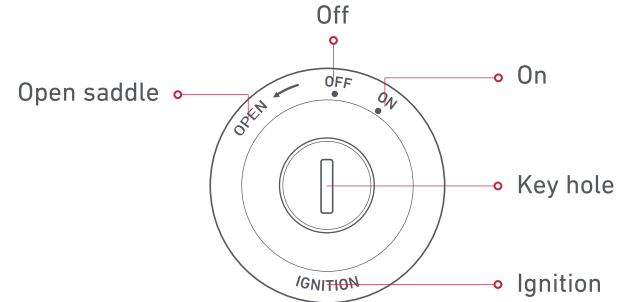
Press to unlock the cushion to check the battery  
 (\* Refer to "Step 2" for key positions )

## Left-hand Combination Switch



- ① Left function button
- ② Mode Selector
- ③ Horn
- ④ High/Low beam
- ⑤ Turn Signal Indicator

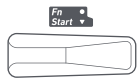
## Key and Remote Control



Emergency Seat Cushion Lock and Power Switch Lock



Key



### Left function button

Press inward to switch between segmentation/reset; Press down to start/pause timing.



### Mode Selector

Switch between ECO and SPORT mode.



### Horn

Press the horn button, the horn will sound, release to stop.



### High/Low beam

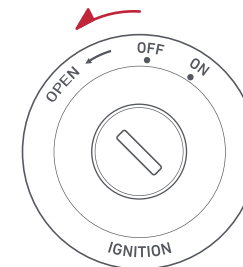
Click to switch the high/low beam.



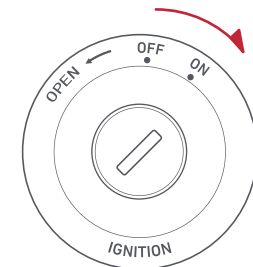
### Turn Signal Indicator

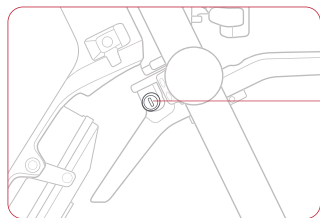
Turn left/right to switch turn signal; Press in the middle position to reset and turn off the left/right turn signal.

Open saddle



Turn on the vehicle



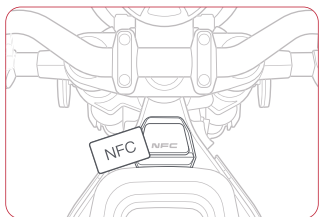


Steering lock



Unlock steering

## NFC



- Swipe NFC to switch vehicle power supply

## Card key matching

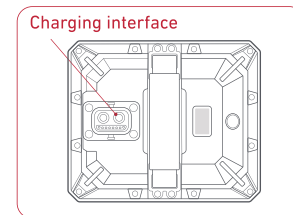
Please use the "Key and Sharing" module in the NIU App to manage NFC keys.

## Delete User Card

Repeatedly entering matching mode will delete all previously configured user cards.

# Battery, Charger, Motor and Controller

## Battery Instruction



## External charging mode

Battery can be charged in or out of the vehicle. Plug the charger cable into the battery port. When charging, the battery screen will display real-time battery level.

## Battery Level Display Description

- In charging mode, press the button to display the battery percentage, and when fully charged, it will display 100%;
- Not in charging mode, press the button and the screen will display the battery percentage; When the battery level is less than 20%, the screen will flash;
- Press the button 10 times or more within 5 seconds, screen will display error code if battery failure

